

R	R
90	89
W	W

Well location, DGU 1289 FEDERAL 18-43 CS2
(SURFACE LOCATION), located as shown in the NE
1/4 SE 1/4 of Section 18, T12S, R89W, 6th P.M.,
Gunnison County, Colorado.

SPOT ELEVATION LOCATED A ROAD INTERSECTION IN THE NE 1/4 OF SECTION 9, T11S, R90W, 6th P.M. TAKEN FROM THE BULL MOUNTAIN QUADRANGLE, COLORADO, GUNNISON COUNTY, 7.5 MINUTE SERIES (TOPO GRAPHICAL MAP) PUBLISHED BY THE UNITED STATES DEPARTMENT OF THE INTERIOR, GEOLOGICAL SURVEY. SAID ELEVATION IS MARKED AS BEING 7487 FEET.

BASIS OF BEARINGS IS A G.P.S. OBSERVATION.



THIS IS TO CERTIFY THAT THE ABOVE PLAT WAS PREPARED FROM FIELD NOTES OF ACTUAL SURVEYS MADE BY ME OR UNDER MY SUPERVISION AND THAT THE LOCATION HAS BEEN STATED ON THE GROUND AS SHOWN ON THE PLAT AND THAT THE SAME ARE TRUE AND CORRECT TO THE BEST OF MY KNOWLEDGE AND BELIEF.

REGISTERED LAND SURVEYOR
REGISTRATION NO. 98130
STATE OF COLORADO
04-27-17

REV: 1 04-27-17 M.D. (SHL CHANGE)

85 SOUTH 200 EAST - VERNAL, UTAH 84078

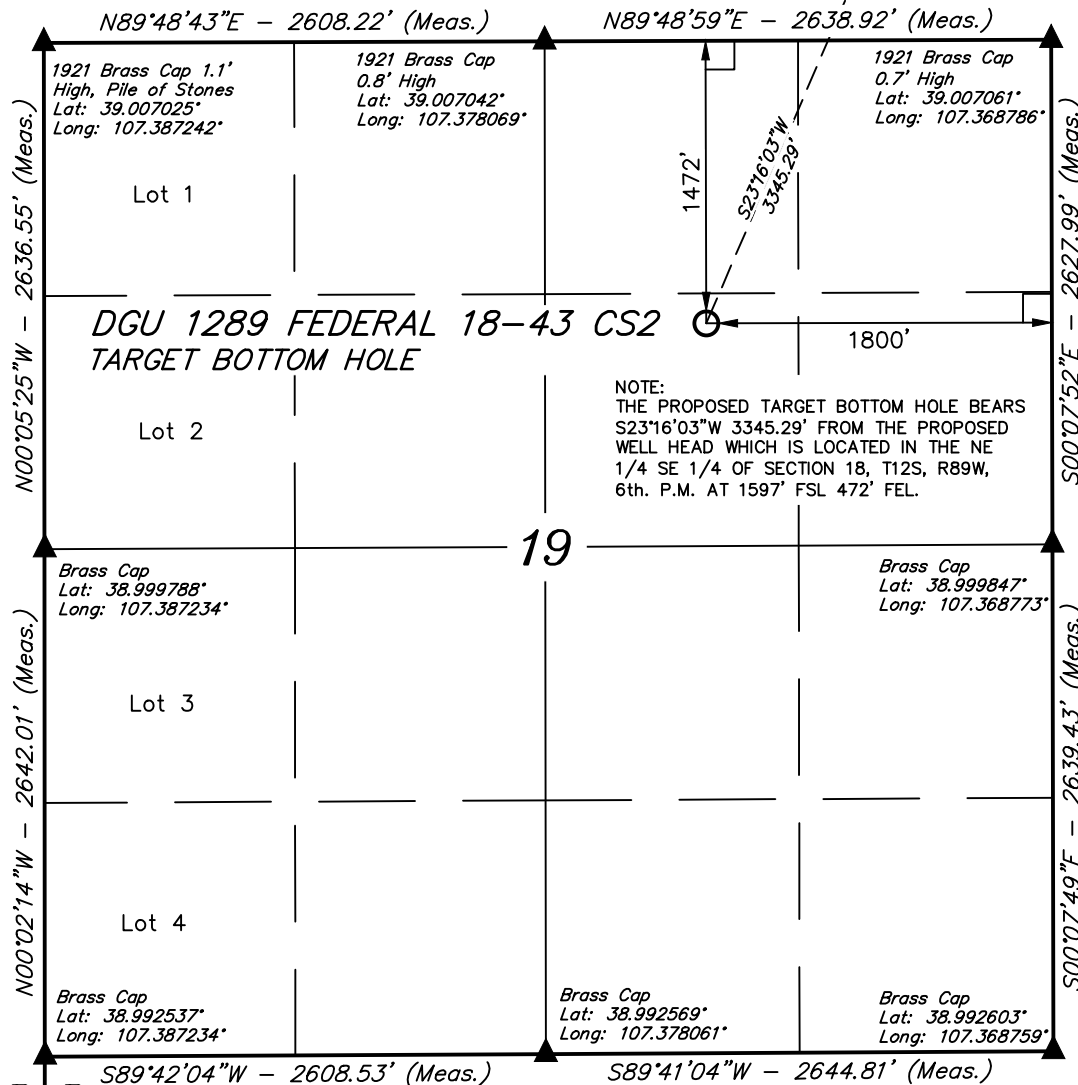
PDOP = 1.1

NAD 83 (SURFACE LOCATION)	SCALE	DATE SURVEYED:	DATE DRAWN:
LATITUDE = 39°00'41.19" (39.011442)	1" = 1000'	04-19-17	04-27-17
LONGITUDE = 107°22'13.62" (107.370450)	PARTY	REFERENCES	
NAD 27 (SURFACE LOCATION)	BART HUNTING, B.K. M.D.	G.L.O. PLAT	
LATITUDE = 39°00'41.23" (39.011453)	WEATHER	FILE	GUNNISON ENERGY CORPORATION
LONGITUDE = 107°22'11.43" (107.369842)	WARM		
UTM COORD.: NAD 1927 / ZONE 13			
N: 14174878.06 E: 967211.61			

L = 90° SYMBOL
 ● = PROPOSED WELL HEAD.
 ○ = TARGET BOTTOM HOLE.
 ▲ = SECTION CORNERS LOCATED.

T12S, R89W, 6th P.M.

SURFACE
LOCATION



GUNNISON ENERGY CORPORATION

Well location, DGU 1289 FEDERAL 18-43 CS2 (TARGET BOTTOM HOLE), located as shown in the SW 1/4 NE 1/4 of Section 19, T12S, R89W, 6th P.M., Gunnison County, Colorado.

BASIS OF ELEVATION

SPOT ELEVATION LOCATED A ROAD INTERSECTION IN THE NE 1/4 OF SECTION 9, T11S, R90W, 6th P.M. TAKEN FROM THE BULL MOUNTAIN QUADRANGLE, COLORADO, GUNNISON COUNTY, 7.5 MINUTE SERIES (TOPO GRAPHICAL MAP) PUBLISHED BY THE UNITED STATES DEPARTMENT OF THE INTERIOR, GEOLOGICAL SURVEY. SAID ELEVATION IS MARKED AS BEING 7487 FEET.

BASIS OF BEARINGS

BASIS OF BEARINGS IS A G.P.S. OBSERVATION.



CERTIFICATE

THIS IS TO CERTIFY THAT THE ABOVE PLAT WAS PREPARED FROM FIELD NOTES OF ACTUAL SURVEYS MADE BY ME OR UNDER MY SUPERVISION AND THAT THE LOCATION HAS BEEN STAKED ON THE GROUND AS SHOWN ON THE PLAT AND THAT THE SAME ARE TRUE AND CORRECT TO THE BEST OF MY KNOWLEDGE AND BELIEF.

REGISTERED LAND SURVEYOR
REGISTRATION NO. 92180
STATE OF COLORADO 04-27-17

REV: 1 04-27-17 M.D. (SHL CHANGE)

UINTAH ENGINEERING & LAND SURVEYING
85 SOUTH 200 EAST - VERNAL, UTAH 84078
(435) 789-1017

LEGEND:

- └─┘ = 90° SYMBOL
- = PROPOSED WELL HEAD.
- = TARGET BOTTOM HOLE.
- ▲ = SECTION CORNERS LOCATED.

NAD 83 (TARGET BOTTOM HOLE)	
LATITUDE =	39°00'10.83" (39.003008)
LONGITUDE =	107°22'30.39" (107.375108)
NAD 27 (TARGET BOTTOM HOLE)	
LATITUDE =	39°00'10.87" (39.003019)
LONGITUDE =	107°22'28.20" (107.374500)
UTM COORD.: NAD 1927 / ZONE 13	
N:	14171842.05 E: 965808.30

SCALE 1" = 1000'	DATE SURVEYED: 04-19-17	DATE DRAWN: 04-27-17
PARTY BART HUNTING, B.K. M.D.	REFERENCES G.L.O. PLAT	
WEATHER WARM	FILE GUNNISON ENERGY CORPORATION	