



May 15, 2017

Colorado Oil and Gas Conservation Commission  
1120 Lincoln Street, Suite 801  
Denver, CO 80203

**RE: Proposed Wellbore Spacing Unit**  
Raindance FD 20-322HN  
Niobrara New Drill  
NENE Sec. 30, Township 6N, Range 67W  
Weld County, Colorado

Dear Director Lepore,

Great Western Operating Company, LLC (Great Western) is planning to drill the above captioned well in accordance with the provisions of Colorado Oil and Gas Conservation Commission (COGCC) Rule 318A.e.

Great Western's proposed wellbore spacing unit consists of:

Township 6 North, Range 67 West (Weld County):  
Section 19: SESE  
Section 20: S2S2

Total Acres: 200 ac

The 30 day notification time period has passed and we have not yet received any objections to such well locations or proposed spacing unit, therefore Great Western hereby requests the Director to approve the above mentioned well. Great Western respectfully requests the COGCC review the enclosed map illustrating the proposed wellbore spacing unit.

Respectfully,

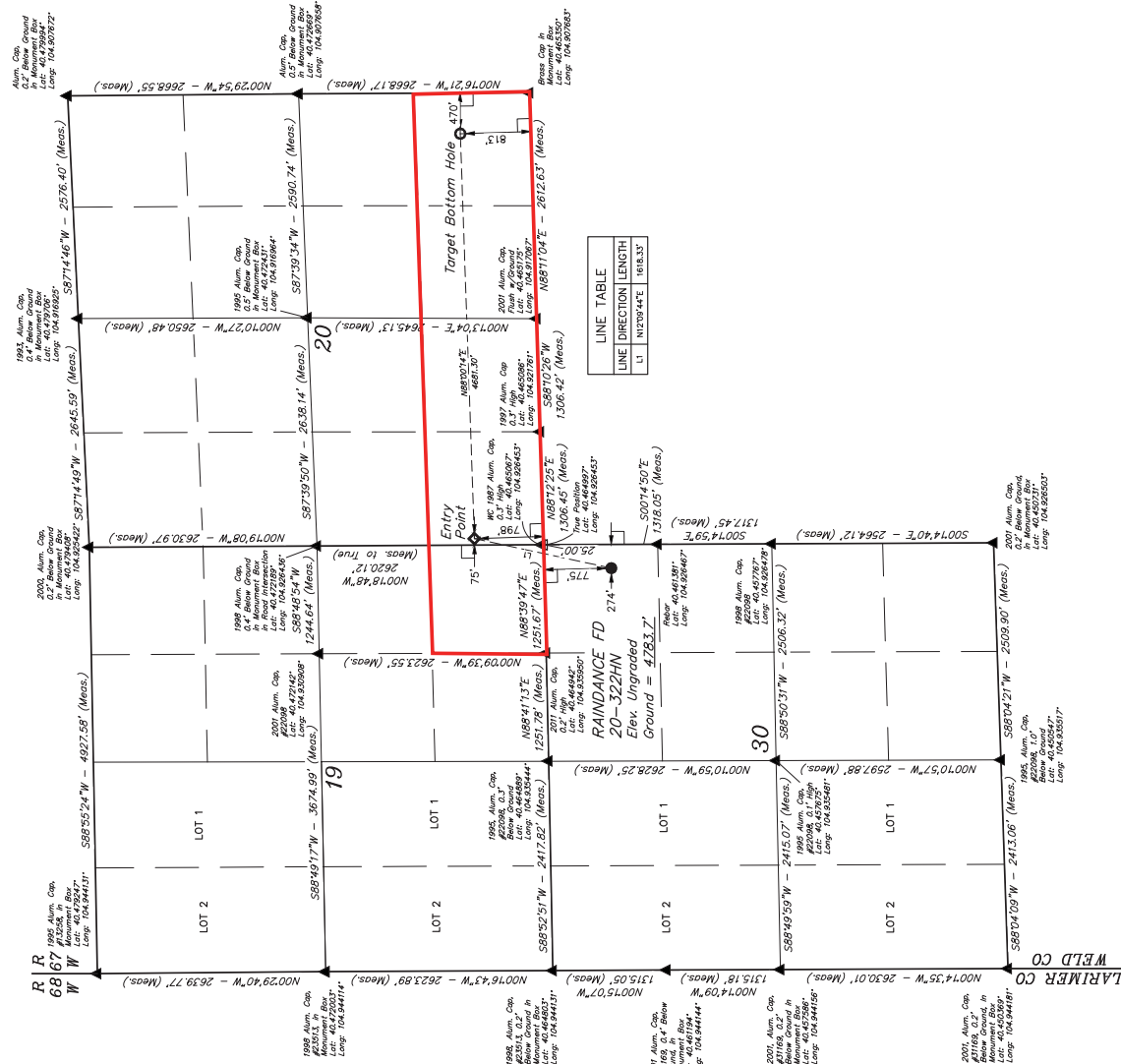
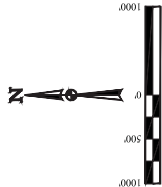
*Ashley Noonan*

**Ashley Noonan**  
Senior Regulatory Analyst  
Great Western Operating Company, LLC

T6N, R67W, 6th P.M.

GREAT WESTERN OPERATING COMPANY  
RAINANCE FD 20-322HN  
NE 1/4 NE 1/4, SECTION 30, T6N, R67W, 6th P.M.  
WELD COUNTY, COLORADO

THIS IS A PRELIMINARY SURVEY  
BASIS OF BEARINGS AND DISTANCES  
BASIS OF ELEVATION  
USGS COOPERATIVE BASE NETWORK CONTROL STATION  
DESIGNATION "VERMILYEA". NGS DATA SHEET LISTS THE  
NAD 83 ELEVATION AS BEING 5629 FEET.



LEGEND:  
= 90° SWIREL  
= PROPOSED WELLHEAD  
= TARGET BOTTOM HOLE  
= SECTION CORNERS LOCATED (NAD 83)  
= SECTION CORNERS RE-ESTABLISHED  
(Not Set on Ground) (NAD 83)

NAD 83 SURFACE LOCATION		NAD 83 ENTRY POINT		NAD 83 TARGET BOTTOM HOLE	
LINE	LENGTH	LINE	LENGTH	LINE	LENGTH
1	N209.44°E   108.33'	1	N209.44°E   108.33'	1	N209.44°E   108.33'
2	N00714.46°W   2576.40'	2	N00714.46°W   2576.40'	2	N00714.46°W   2576.40'
3	N00714.46°W   2576.40'	3	N00714.46°W   2576.40'	3	N00714.46°W   2576.40'
4	N00714.46°W   2576.40'	4	N00714.46°W   2576.40'	4	N00714.46°W   2576.40'
5	N00714.46°W   2576.40'	5	N00714.46°W   2576.40'	5	N00714.46°W   2576.40'
6	N00714.46°W   2576.40'	6	N00714.46°W   2576.40'	6	N00714.46°W   2576.40'
7	N00714.46°W   2576.40'	7	N00714.46°W   2576.40'	7	N00714.46°W   2576.40'
8	N00714.46°W   2576.40'	8	N00714.46°W   2576.40'	8	N00714.46°W   2576.40'
9	N00714.46°W   2576.40'	9	N00714.46°W   2576.40'	9	N00714.46°W   2576.40'
10	N00714.46°W   2576.40'	10	N00714.46°W   2576.40'	10	N00714.46°W   2576.40'
11	N00714.46°W   2576.40'	11	N00714.46°W   2576.40'	11	N00714.46°W   2576.40'
12	N00714.46°W   2576.40'	12	N00714.46°W   2576.40'	12	N00714.46°W   2576.40'
13	N00714.46°W   2576.40'	13	N00714.46°W   2576.40'	13	N00714.46°W   2576.40'
14	N00714.46°W   2576.40'	14	N00714.46°W   2576.40'	14	N00714.46°W   2576.40'
15	N00714.46°W   2576.40'	15	N00714.46°W   2576.40'	15	N00714.46°W   2576.40'
16	N00714.46°W   2576.40'	16	N00714.46°W   2576.40'	16	N00714.46°W   2576.40'
17	N00714.46°W   2576.40'	17	N00714.46°W   2576.40'	17	N00714.46°W   2576.40'
18	N00714.46°W   2576.40'	18	N00714.46°W   2576.40'	18	N00714.46°W   2576.40'
19	N00714.46°W   2576.40'	19	N00714.46°W   2576.40'	19	N00714.46°W   2576.40'
20	N00714.46°W   2576.40'	20	N00714.46°W   2576.40'	20	N00714.46°W   2576.40'
21	N00714.46°W   2576.40'	21	N00714.46°W   2576.40'	21	N00714.46°W   2576.40'
22	N00714.46°W   2576.40'	22	N00714.46°W   2576.40'	22	N00714.46°W   2576.40'
23	N00714.46°W   2576.40'	23	N00714.46°W   2576.40'	23	N00714.46°W   2576.40'
24	N00714.46°W   2576.40'	24	N00714.46°W   2576.40'	24	N00714.46°W   2576.40'
25	N00714.46°W   2576.40'	25	N00714.46°W   2576.40'	25	N00714.46°W   2576.40'
26	N00714.46°W   2576.40'	26	N00714.46°W   2576.40'	26	N00714.46°W   2576.40'
27	N00714.46°W   2576.40'	27	N00714.46°W   2576.40'	27	N00714.46°W   2576.40'
28	N00714.46°W   2576.40'	28	N00714.46°W   2576.40'	28	N00714.46°W   2576.40'
29	N00714.46°W   2576.40'	29	N00714.46°W   2576.40'	29	N00714.46°W   2576.40'
30	N00714.46°W   2576.40'	30	N00714.46°W   2576.40'	30	N00714.46°W   2576.40'

REV.3 10-26-16 K.B. (SIL. EP. BHI & NAME CHANGE)  
UTAH  
Corporate Office: 43 South 200 East  
Vernal, UT 84078 • (435) 798-1017  
UTAH MEASUREMENTS, LLC  
K.B.  
DRAWN BY: CHAD MEYERS, J.C.  
DATE: 10-26-16  
SCALE: 1" = 1000'  
WELL LOCATION PLAT

