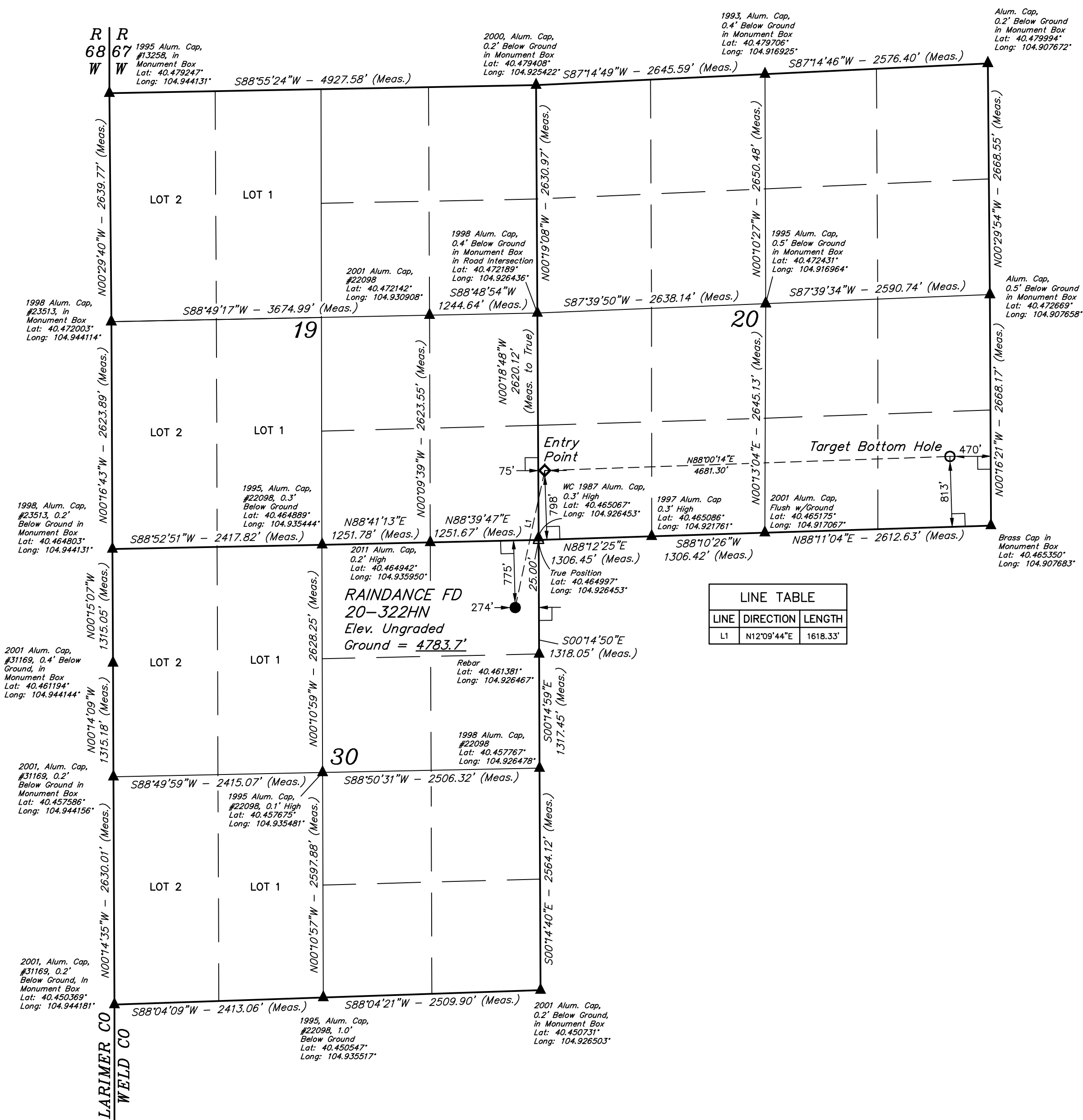
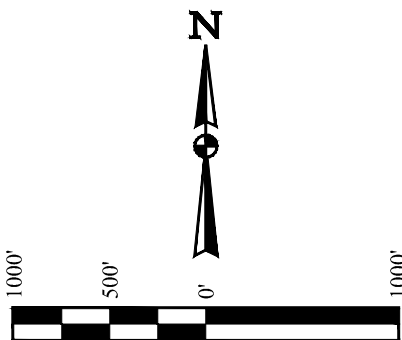


T6N, R67W, 6th P.M.

GREAT WESTERN OPERATING COMPANY

RAINDANCE FD 20-322HN  
NE 1/4 NE 1/4, SECTION 30, T6N, R67W, 6th P.M.  
WELD COUNTY, COLORADO

BASIS OF BEARINGS  
BASIS OF ELEVATION  
USGS COOPERATIVE BASE NETWORK CONTROL STATION,  
DESIGNATION "VERMILYEA". NGS DATA SHEET LISTS THE  
NAVD 88 ELEVATION AS BEING 5026 FEET.



LEGEND:  
[Symbol] = 90° SYMBOL  
● = PROPOSED WELLHEAD.  
○ = TARGET BOTTOM HOLE.  
◇ = ENTRY POINT.  
▲ = SECTION CORNERS LOCATED. (NAD 83)  
△ = SECTION CORNERS RE-ESTABLISHED.  
(Not Set on Ground.) (NAD 83)

CERTIFICATE OF RECORDING  
THIS IS TO CERTIFY THAT THE ABOVE DESCRIBED SURVEY HAS BEEN RECORDED IN THE PUBLIC RECORDS OF THE STATE OF COLORADO, AND THAT THE SAME ARE TRUE AND CORRECT TO THE BEST OF MY KNOWLEDGE AND BELIEF.

RECORDED LAND SURVEYOR  
REGISTRATION NO. 28285  
STATE OF COLORADO

REV: 3 10-26-16 K.B. (SHL, EP, TBH & NAME CHANGE)

PDOP = 1.5

NAD 83 (SURFACE LOCATION)	NAD 83 (ENTRY POINT)	NAD 83 (TARGET BOTTOM HOLE)
LATITUDE = 40°27'46.29" (40.462888)	LATITUDE = 40°28'01.90" (40.467194)	LATITUDE = 40°28'03.18" (40.467550)
LONGITUDE = 104°55'38.80" (104.927444)	LONGITUDE = 104°55'34.24" (104.926178)	LONGITUDE = 104°54'33.71" (104.909364)
NAD 27 (SURFACE LOCATION)	NAD 27 (ENTRY POINT)	NAD 27 (TARGET BOTTOM HOLE)
LATITUDE = 40°27'46.36" (40.462878)	LATITUDE = 40°28'01.96" (40.467211)	LATITUDE = 40°28'03.24" (40.467567)
LONGITUDE = 104°55'36.89" (104.926914)	LONGITUDE = 104°55'32.34" (104.925650)	LONGITUDE = 104°54'31.81" (104.908836)



UINTEAH  
ENGINEERING & LAND SURVEYING

UELS, LLC  
Corporate Office \* 85 South 200 East  
Vernal, UT 84078 \* (435) 789-1017

SURVEYED BY CHAD MEIERS, J.C.  
DRAWN BY K.B.

10-14-16  
02-25-16

SCALE  
1" = 1000'

WELL LOCATION PLAT