



May 15, 2017

Colorado Oil and Gas Conservation Commission  
1120 Lincoln Street, Suite 801  
Denver, CO 80203

**RE: Proposed Wellbore Spacing Unit**  
Raindance FD 20-319HNX  
Niobrara New Drill  
NENE Sec. 30, Township 6N, Range 67W  
Weld County, Colorado

Dear Director Lepore,

Great Western Operating Company, LLC (Great Western) is planning to drill the above captioned well in accordance with the provisions of Colorado Oil and Gas Conservation Commission (COGCC) Rule 318A.e.

Great Western's proposed wellbore spacing unit consists of:

Township 6 North, Range 67 West (Weld County):  
Section 19: E2SE  
Section 20: S2

Total Acres: 392 ac

The 30 day notification time period has passed and we have not yet received any objections to such well locations or proposed spacing unit, therefore Great Western hereby requests the Director to approve the above mentioned well. Great Western respectfully requests the COGCC review the enclosed map illustrating the proposed wellbore spacing unit.

Respectfully,

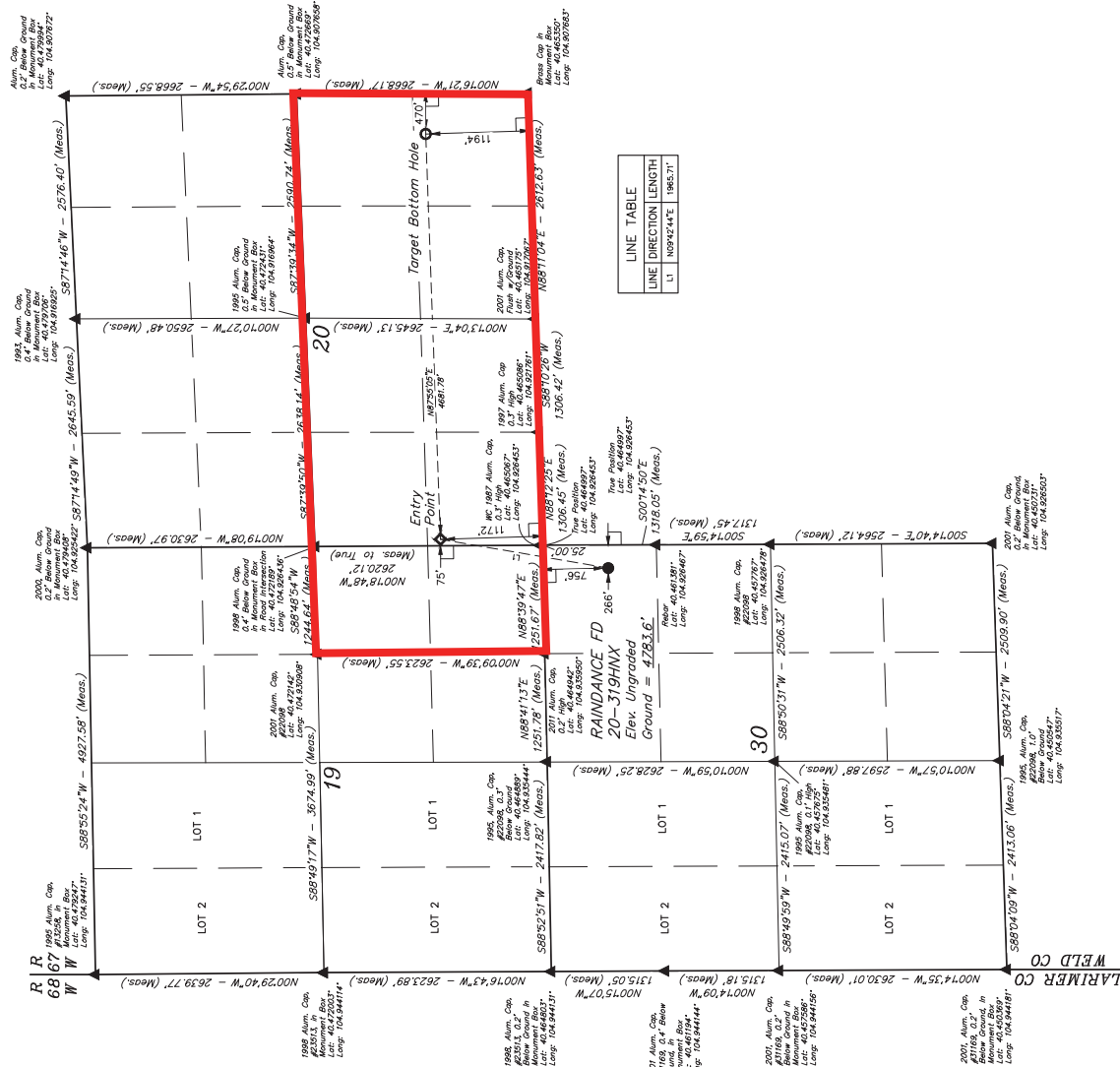
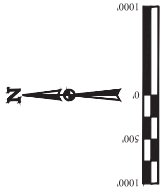
*Ashley Noonan*

**Ashley Noonan**  
Senior Regulatory Analyst  
Great Western Operating Company, LLC

T6N, R67W, 6th P.M.

GREAT WESTERN OPERATING COMPANY  
RAINANCE FD 20-319HXX  
NE 1/4 NE 1/4, SECTION 30, T6N, R67W, 6th P.M.  
WELD COUNTY, COLORADO

THIS IS A PRELIMINARY SURVEY  
BASIS OF BEARINGS AND DISTANCES  
BASIS OF ELEVATION  
USGS COOPERATIVE BASE NETWORK CONTROL STATION  
DESIGNATION "VERMILYEA". NGS DATA SHEET LISTS THE  
NAD 83 ELEVATION AS BEING 5629 FEET.



LINE TABLE		
LINE	DIRECTION	LENGTH
LI	N03°42'41"E	1965.71

LEGEND:  
= 90° SWHEEL  
= PROPOSED WELLSHEAD  
= TARGET BOTTOM HOLE  
= SECTION CORNERS LOCATED (NAD 83)  
= SECTION CORNERS RE-ESTABLISHED  
(Not Set on Ground) (NAD 83)

PROOF = 1.5	
NAD 27 SURFACE LOCATION	NAD 27 ENTRY POINT
POINT OF BEGINNING (NAD 27) LONGITUDE = 104°53'30.37" (104 53 30.37) LATITUDE = 40°27'46.57" (40 27 46.57)	POINT OF BEGINNING (NAD 27) LONGITUDE = 104°53'30.37" (104 53 30.37) LATITUDE = 40°27'46.57" (40 27 46.57)
NAD 27 (TARGET BOTTOM HOLE)	NAD 27 (TARGET BOTTOM HOLE)
POINT OF BEGINNING (NAD 27) LONGITUDE = 104°53'30.37" (104 53 30.37) LATITUDE = 40°27'46.57" (40 27 46.57)	POINT OF BEGINNING (NAD 27) LONGITUDE = 104°53'30.37" (104 53 30.37) LATITUDE = 40°27'46.57" (40 27 46.57)



REV:3 10-26-16 K.B. (SHL:EP:DBH & NAME CHANGE)  
JEFF S. LLC  
Corporate Office: 45 South 200 East  
Vermont, UT 84078 • (435) 798-1017  
UTAH  
CHAD MEHRES, L.C.  
DRAW BY: K.B.  
DATE: 10-25-16  
SCALE: 1" = 1000'  
WELL LOCATION PLAT