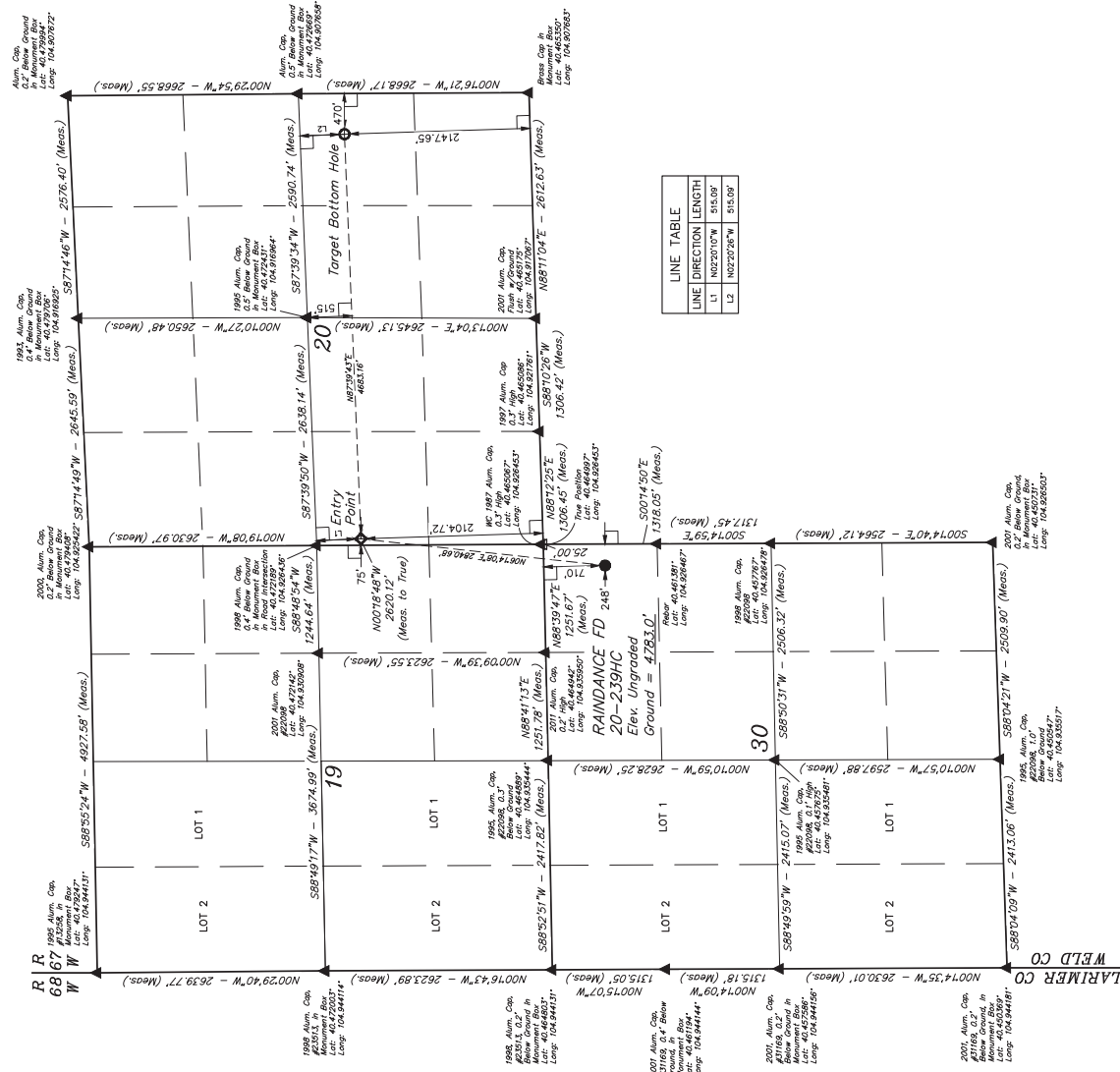


GREAT WESTERN OPERATING COMPANY
RAINANCE FD 20-239HC
NE 1/4 NE 1/4, SECTION 30, T6N, R67W, 6th P.M.
WELD COUNTY, COLORADO

BASE OF BEARINGS
BASE OF ELEVATION
USGS COOPERATIVE BASE NETWORK CONTROL STATION
DESIGNATION "VERMILYEA", NGS DATA SHEET LISTS THE
NAD 83 ELEVATION AS BEING 5629 FEET.

T6N, R67W, 6th P.M.



LINE TABLE		
LINE	DIRECTION	LENGTH
L1	N0220°10'W	515.00'
L2	N0222°26'W	515.00'

LEGEND:
= 90° SWHEEL
= PROPOSED WELLHEAD
= TARGET BOTTOM HOLE
= SECTION CORNERS LOCATED (NAD 83)
= SECTION CORNERS RE-ESTABLISHED
(Not Set on Ground) (NAD 83)

NAD 83 SURFACE LOCATION		NAD 83 ENTRY POINT		NAD 83 TARGET BOTTOM HOLE	
LINE	COORDINATES	LINE	COORDINATES	LINE	COORDINATES
L1	N0220°10'W - 515.00'	L1	N0220°10'W - 515.00'	L1	N0220°10'W - 515.00'
L2	N0222°26'W - 515.00'	L2	N0222°26'W - 515.00'	L2	N0222°26'W - 515.00'

UT/IS LLC
Corporate Office: 45 South 200 East
Vernal, UT 84078 • (435) 798-1017

UT/IS LLC
CITIZEN MEASURES, LLC
DRAW BY: K.B. 10/14/16 SCALE: 1" = 100'

WELL LOCATION PLAT



REV: 3 10-26-16 K.B. (SHL: EP: BHI & NAME CHANGE)