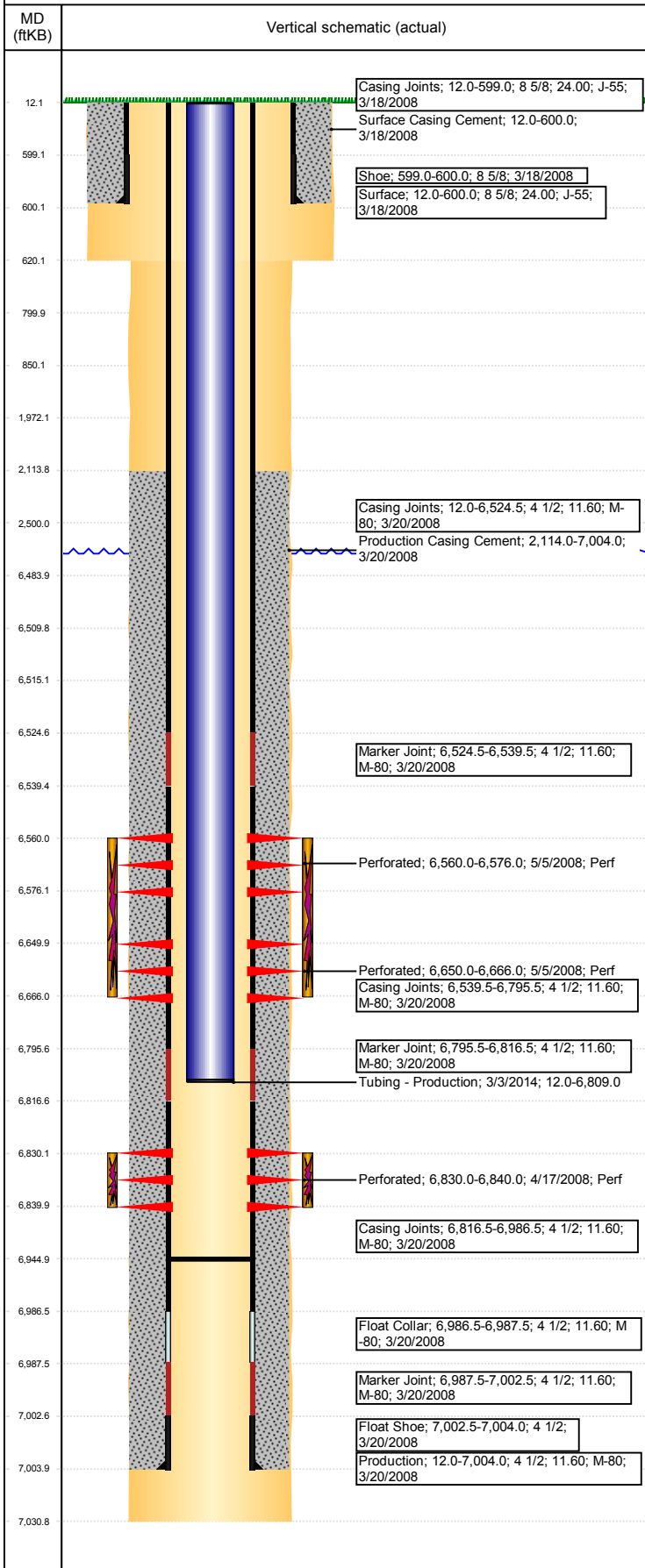


Well Name: WELLS RANCH AA26-05

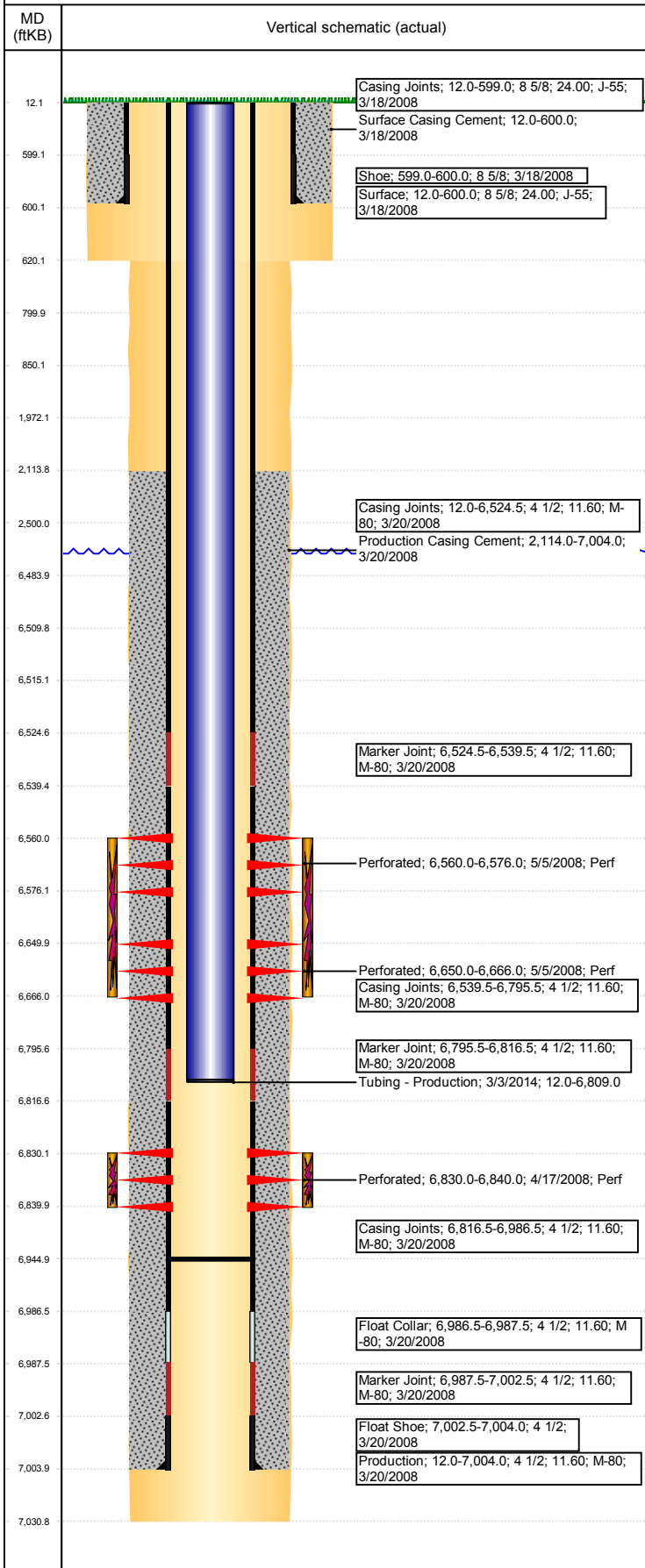
VERTICAL - ORIGINAL HOLE, 5/21/2017 8:48:46 AM



Well Header						
API 05-123-25380	Business Unit DJ BASIN		District 15	Well Config VERTICAL		
Original KB Elevation (ft) 4,847	KB - GL / MSL (ftKB) 12.00		Spud Date 3/17/2008		P & A Date	
Comment WH CURRENTLY REMOVED? PLEASE VERIFY						
Directions To Well WCR 68 & 67, E 0.2, S 1.8, E 0.7, N .5, SW 0.2 INTO						
Current PBTD (mKB) ORIGINAL HOLE - 6,945.0						
Surface Location (Congressional)						
Quarter 3 SW	Quarter 4 NW	Section 26	Township 6	Twnshp N/S Dir N	Range 63	Range E/W Dir W
Bottom Hole Location						
North-South Distance (ft) 1,989.0		From N or S Line FNL		East-West Distance (ft) 660.0		From E or W Line FWL
Plug Back Total Depths						
Date	Depth (ftKB)	Method		Com		
3/20/2008	6,986.0	CASING TALLY		DRILL CIFT P W/ SHOE AND PUSH DOWN TO 6946' TAG PBTD W/ TUBING		
7/10/2008	6,946.0	TUBING TALLY				
3/1/2014	6,945.0	TAG				
Wellbore Sections						
Section Des		Size (in)		Act Top, MD (ftKB)		Act Btm, MD (ftKB)
SURFACE		12 1/4		12		620
PRODUCTION		7 7/8		620		7,031
Zone Statuses						
Zone Name	Status Date	Status	Fluid Type	Job		Prod Method
CODELL	5/8/2008	PR	Water	DRILLING/COMPLETION - ORIGINAL, 3/16/2008...		Flowing
CODELL	2/5/2010	PR		DRILLING/COMPLETION - ORIGINAL, 3/16/2008...		
NIOBRARA	5/8/2008	PR		DRILLING/COMPLETION - ORIGINAL, 3/16/2008...		
NIOBRARA	2/5/2010	PR	Water			Flowing
NIOBRARA	1/26/2015	PR				
Casing Strings						
Csg Des	Run Date	OD (in)	Wt/Len (lb/ft)	Grade	Top, MD (ftKB)	MD (ftKB)
Surface	3/18/2008	8 5/8	24.00	J-55	12.0	600.0
Production	3/20/2008	4 1/2	11.60	M-80	12.0	7,004.0
Cement						
Des				Top (ftKB)		Btm (ftKB)
Surface Casing Cement				12.0		600.0
Production Casing Cement				2,114.0		7,004.0
Tubing Components						
Item Des		OD (in)	Wt (lb/ft)	Grade	Jts	Len (ft)
Perforation Data						
Linked Zone	Bnch/Stg	Sum of Entered Shot Total	Top (ftKB)	Btm (ftKB)	Date	
NIOBRARA, ORIGINAL HOLE	A	64	6,560.00	6,576.00	5/5/2008	
NIOBRARA, ORIGINAL HOLE	B	64	6,650.00	6,666.00	5/5/2008	
CODELL, ORIGINAL HOLE		40	6,830.00	6,840.00	4/17/2008	
Total (Sum)		168				
Other In Hole						
Run Date	Des			OD (in)	Top (ftKB)	Btm (ftKB)
5/15/2017	Cast Iron Bridge Plug			3.99	6,510.0	6,515.0
Logs						
Date	Type			Top, MD (ftKB)	Btm, MD (ftKB)	
2/12/2008	Caliper/Comp.Density/Neutron/GR/SP/ML			2,800.0	7,806.0	
2/12/2008	DIL/GR/SP/Caliper			996.0	7,806.0	
4/4/2008	CBL/CCL/GR			2,040.0	6,962.0	
8/14/2008	GYRO			0.0	6,800.0	

Well Name: WELLS RANCH AA26-05

VERTICAL - ORIGINAL HOLE, 5/21/2017 8:48:46 AM



Stimulation Intervals				
Bnch/Stg	Start Date	Primary Job Type		
	5/2/2008	DRILLING/COMPLETION - ORIGINAL		
Comment				
FRAC THE CODELL - NO PROBLEMS TO REPORT				
Volume Slurry Total (gal)				
144,824.40				
Treat Pressure Avg (psi)		Treat Pressure Max (psi)	Slurry Rate Avg (bbl/min)	Slurry Rate Max (bbl/min)
3,269.0		3,758.0	18.9	19.3
Bnch/Stg	Start Date	Primary Job Type		
A & B	5/7/2008	DRILLING/COMPLETION - ORIGINAL		
Comment				
FRAC THE NIOBRARA - NO PROBLEMS TO REPORT				
Volume Slurry Total (gal)				
184,959.60				
Treat Pressure Avg (psi)		Treat Pressure Max (psi)	Slurry Rate Avg (bbl/min)	Slurry Rate Max (bbl/min)
4,678.0		4,914.0	60.6	62.9