



BOND CEMENT AND-OR SONIC SEISMOGRAM LOG

AND GAMMA RAY

FILING NO. B-356  
B-357

COMPANY CHEVRON OIL COMPANY

WELL CARNEY 23-X-35

FIELD RANGELY

COUNTY RIO BLANCO STATE COLORADO

LOCATION:

2471' FNL &amp; 58' FWL

OTHER SERVICES:

SEC. 35 TWP. 2N RGE. 102W

PERMANENT DATUM GROUND LEVEL ELEV. 5263'

LOG MEASURED FROM KELLY BUSHING

DRILLING MEASURED FROM

DATE 2-21-70

RUN NO. 1

TYPE LOG BOND WITH SONIC SEISMOGRAM &amp; GAMMA

DEPTH-DRILLER

DEPTH-LOGGER

BOTTOM LOGGED INTERVAL 6398' SCH. (6403' MCC.)

TOP LOGGED INTERVAL 5500' 3150'

TYPE FLUID IN HOLE OIL

SALINITY PPM CL.

DENSITY LB./GAL.

LEVEL FULL

MAX. REC. TEMP. DEG. F

OPR. RIG TIME 24 HRS.

RECORDED BY ROBISON

WITNESSED BY MR. McALLISTER

RUN BORE HOLE RECORD

CASING RECORD

NO. BIT FROM TO SIZE WGT. FROM TO

1 9" 0' 755' 10-3/4" 23# 0' 755' T.D.

2 9" 755' T.D. 7" 23# 0' 755' T.D.

THIS READING AND LOG CONFORMS TO API RECOMMENDED STANDARD PRACTICE RP-38

## LOGGING AND EQUIPMENT DATA (BOND CEMENT LOG)

DATE RECORDED	2-21-70	TOOL MODEL NO.	GBCS-3.5-G
TIME STARTED	10:00 AM	DIAMETER	3 1/2"
TIME FINISHED	12:10 PM	LENGTH	4' SPACING
LOGGED INTERVAL	3150' TO 3950' AND 5500' TO 6398'		
LOGGED CEMENT TOP	--		

## CEMENTING DATA

	1	2	SQUEEZE NO. 1	SQUEEZE NO. 2	SQUEEZE
DATE AND HOUR SET	--				
SETTING TIME (HRS)	--				
TYPE CEMENT	HAL - "LIGHT"	AND REGULAR - CLASS "G"			
SACKS USED	550	300			
PRECEDING FLUID	WATER	--			
% ADDITIVE	HALAD-9 (1%)	CFR-2 (.75%)			
% RETARDER	--	--			
SLURRY WT.	--	--			
BREAKDOWN PRESS.	--	--			
SURFACE MAX. PRESS.	--	--			
BOTTOM MAX. PRESS.	--	--			

## GAMMA RAY

RUN NO.	1
TOOL MODEL NO.	G-3.5-G
DIAM.	3 1/2"
DETECT. MODEL NO.	132
TYPE	SCINT.
LENGTH	3'
DIST. TO N. SOURCE	--
GENERAL	
HOIST TRUCK NO.	2112
INST. TRUCK NO.	2112
TOOL SERIAL NO.	--
LOG TICKET NO.	--

## NEUTRON

RUN NO.	
LOG TYPE	
TOOL MODEL NO.	
DIAM.	
DETECT MODEL NO.	
TYPE	
LENGTH	
SOURCE MODEL NO.	
SERIAL NO.	
SPACING	
TYPE	
STRENGTH	

## LOGGING DATA

GENERAL		GAMMA RAY				NEUTRON			
RUN NO.	DEPTHS	SPEED	T.C.	SENS.	ZERO	API G.R. UNITS	T.C.	SENS.	ZERO
	FROM	TO	FT./MIN.	SEC.	SETTINGS	DIV. L. OR R.	SEC.	SETTINGS	DIV. L. OR R.
1	3150'	3950'	24	1.8	G-200, D-180	L-3.5	10.4		
	AND				R-5A				
	5500'	6398'							

REMARKS: McCULLOUGH DEPTH ADJUSTED 2' TO MATCH SCHLUMBERGER DEPTH  
McCULLOUGH DEPTH 6300' = 6298' SCHLUMBERGER DEPTH  
REPEAT SECTION RUN AT McCULLOUGH DEPTH



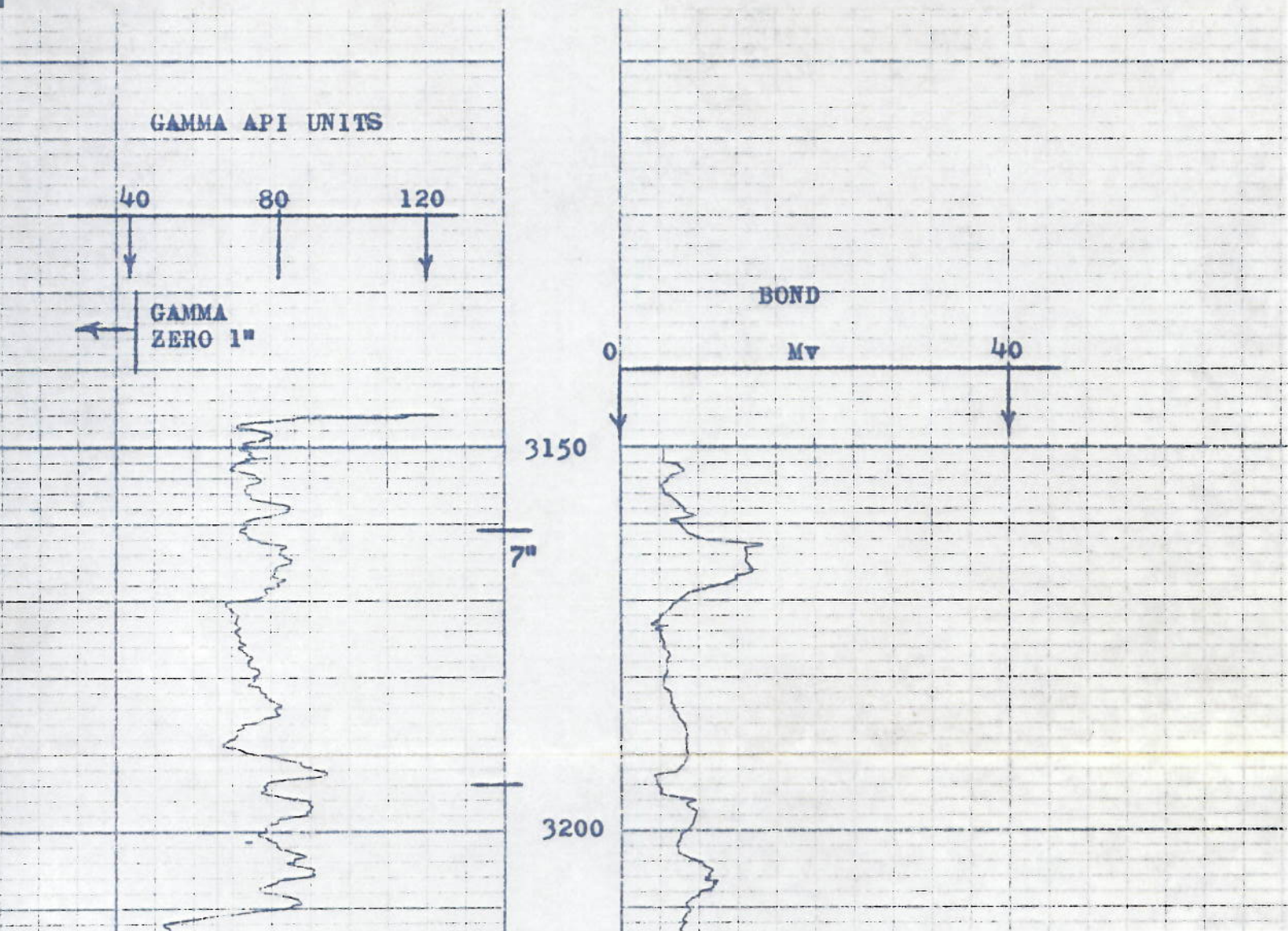
DATE RECORDED	2-21-70	TOOL MODEL NO.	GBCS-3.5-G
TIME STARTED	10:00 AM	DIAMETER	3 1/2"
TIME FINISHED	12:10 PM	LENGTH	4' SPACING
LOGGED INTERVAL	3150' TO 3950' AND 5500' TO 6398'		
LOGGED CEMENT TOP	--		

CEMENTING DATA					
	1	2	SQUEEZE NO. 1	SQUEEZE NO. 2	SQUEE
DATE AND HOUR SET	--				
SETTING TIME (HRS)	--				
TYPE CEMENT	HAL - "LIGHT"	AND REGULAR - CLASS "G"			
SACKS USED	550		300		
PRECEDING FLUID	WATER		--		
% ADDITIVE	HALAD-9 (1%)		CFR-2 (.75%)		
% RETARDER	--		--		
SLURRY WT.	--		--		
BREAKDOWN PRESS.	--		--		
SURFACE MAX. PRESS.	--		--		
BOTTOM MAX. PRESS.	--		--		

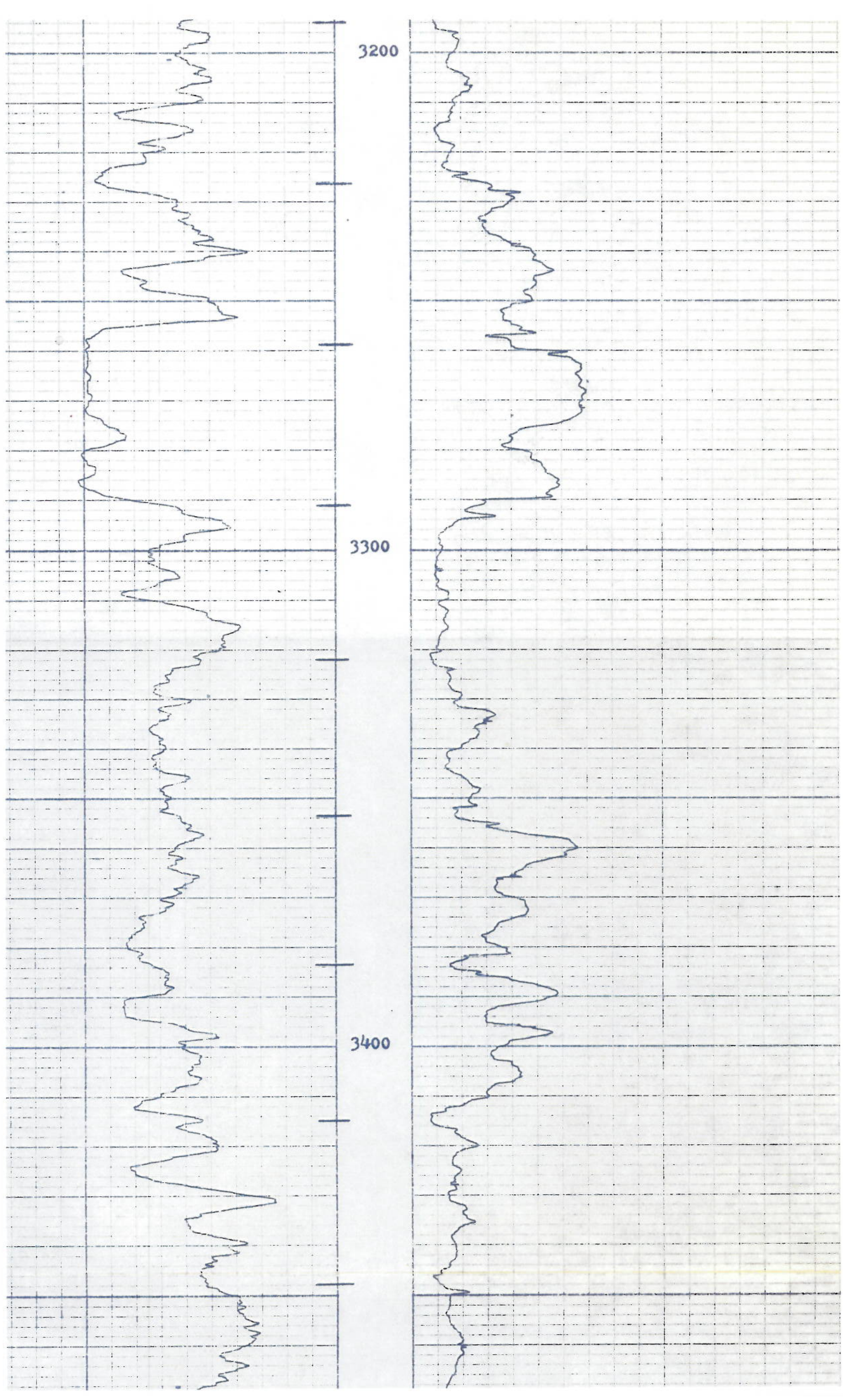
GAMMA RAY			NEUTRON		
RUN NO.	1		RUN NO.		
TOOL MODEL NO.	G-3.5-C		LOG TYPE		
DIAM.	3 1/2"		TOOL MODEL NO.		
DETECT. MODEL NO.	132		DIAM.		
TYPE	SCINT.		DETECT MODEL NO.		
LENGTH	3"		TYPE		
DIST. TO N. SOURCE	--		LENGTH		
			SOURCE MODEL NO.		
			SERIAL NO.		
			SPACING		
			TYPE		
			STRENGTH		
GENERAL					
HOIST TRUCK NO.	2112				
INST. TRUCK NO.	2112				
TOOL SERIAL NO.	--				
LOG TICKET NO.	--				

LOGGING DATA										
GENERAL			GAMMA RAY				NEUTRON			
RUN NO.	DEPTHS		SPEED	T.C.	SENS.	ZERO	API G.R. UNITS	T.C.	SENS.	ZERO
	FROM	TO	FT./MIN.	SEC.	SETTINGS	DIV. L. OR R.	PER LOG DIV.	SEC.	SETTINGS	DIV. L. OR R.
1	3150'	3950'	24	1.8	G-200,D-180	L-3.5	10.4			
	AND				R-5A					
	5500'	6398'								

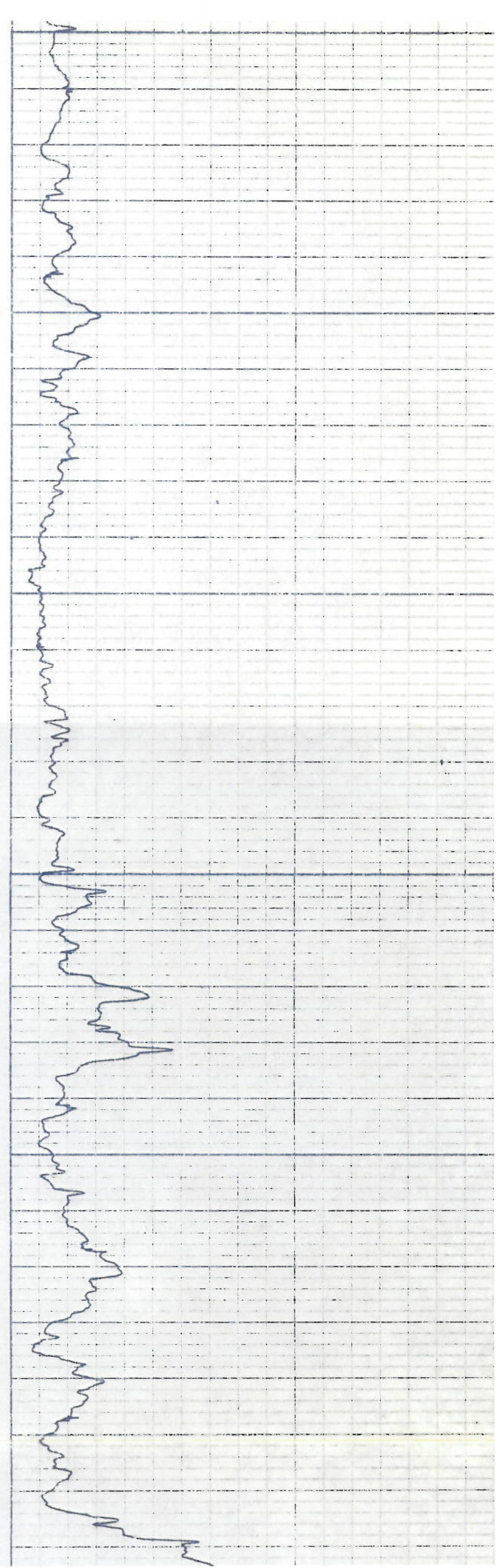
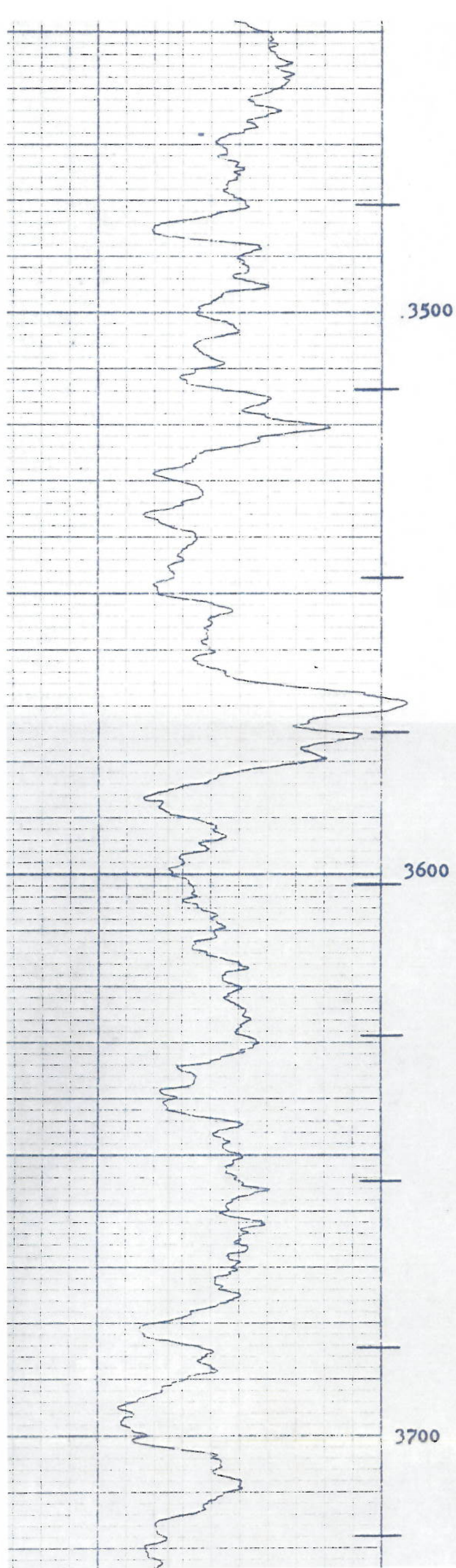
REMARKS: McCULLOUGH DEPTH ADJUSTED 2' TO MATCH SCHLUMBERGER DEPTH  
 McCULLOUGH DEPTH 6300' = 6298' SCHLUMBERGER DEPTH  
 REPEAT SECTION RUN AT McCULLOUGH DEPTH



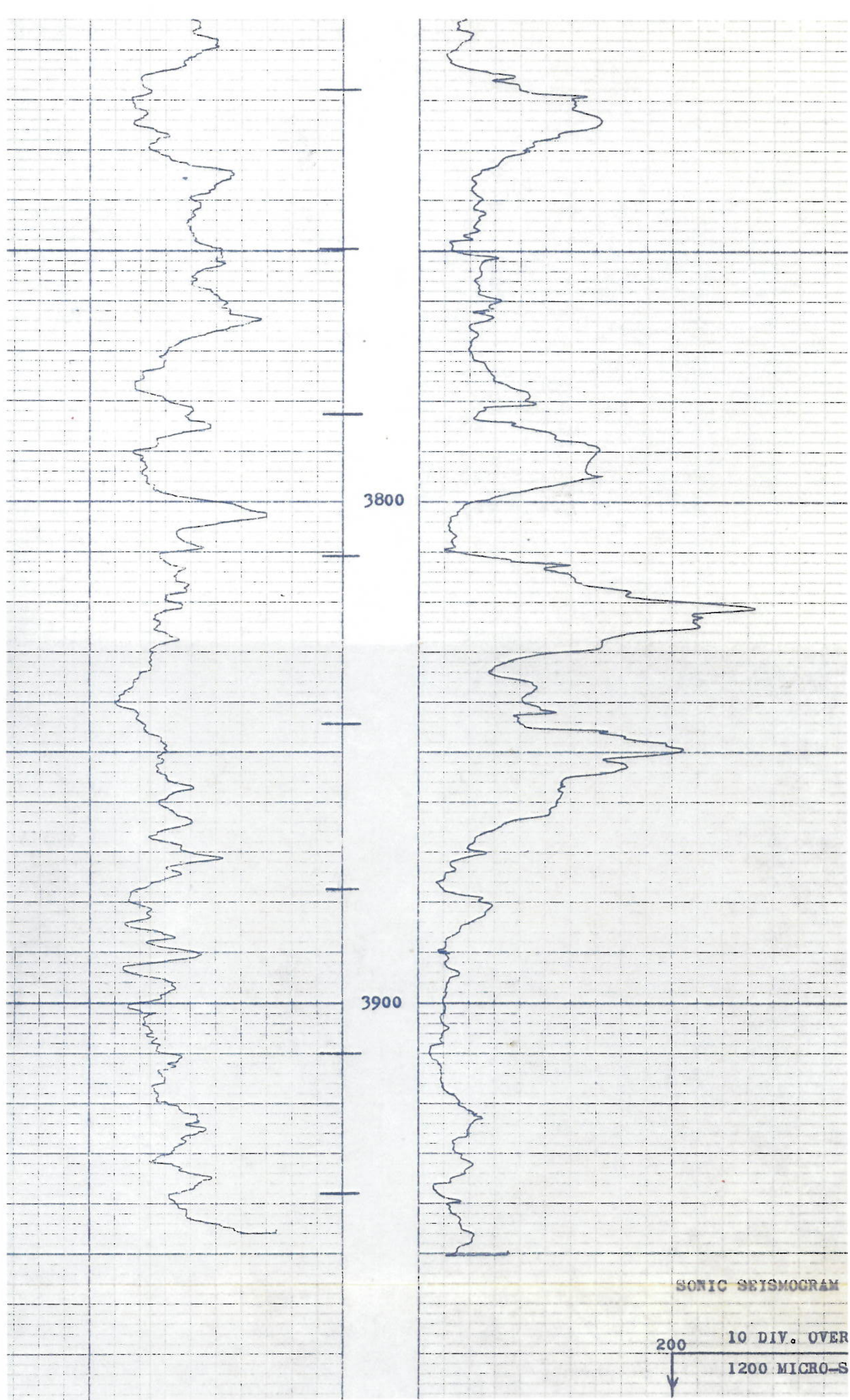














200

10 DIV. OVER

1200 MICRO-S

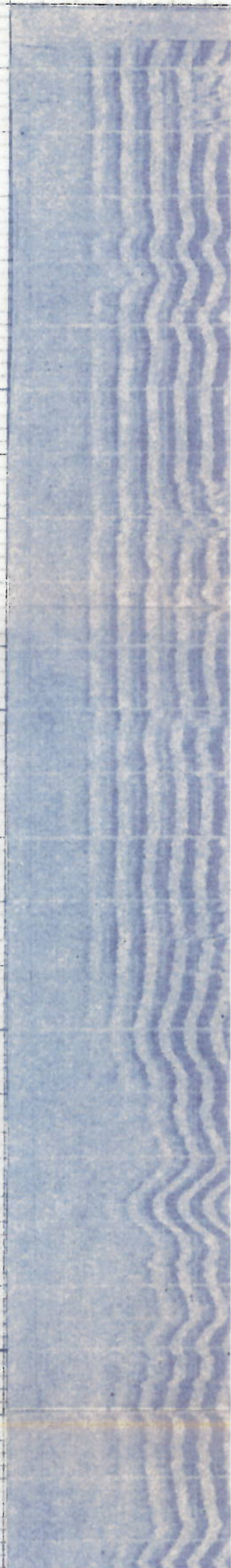
5500

5600

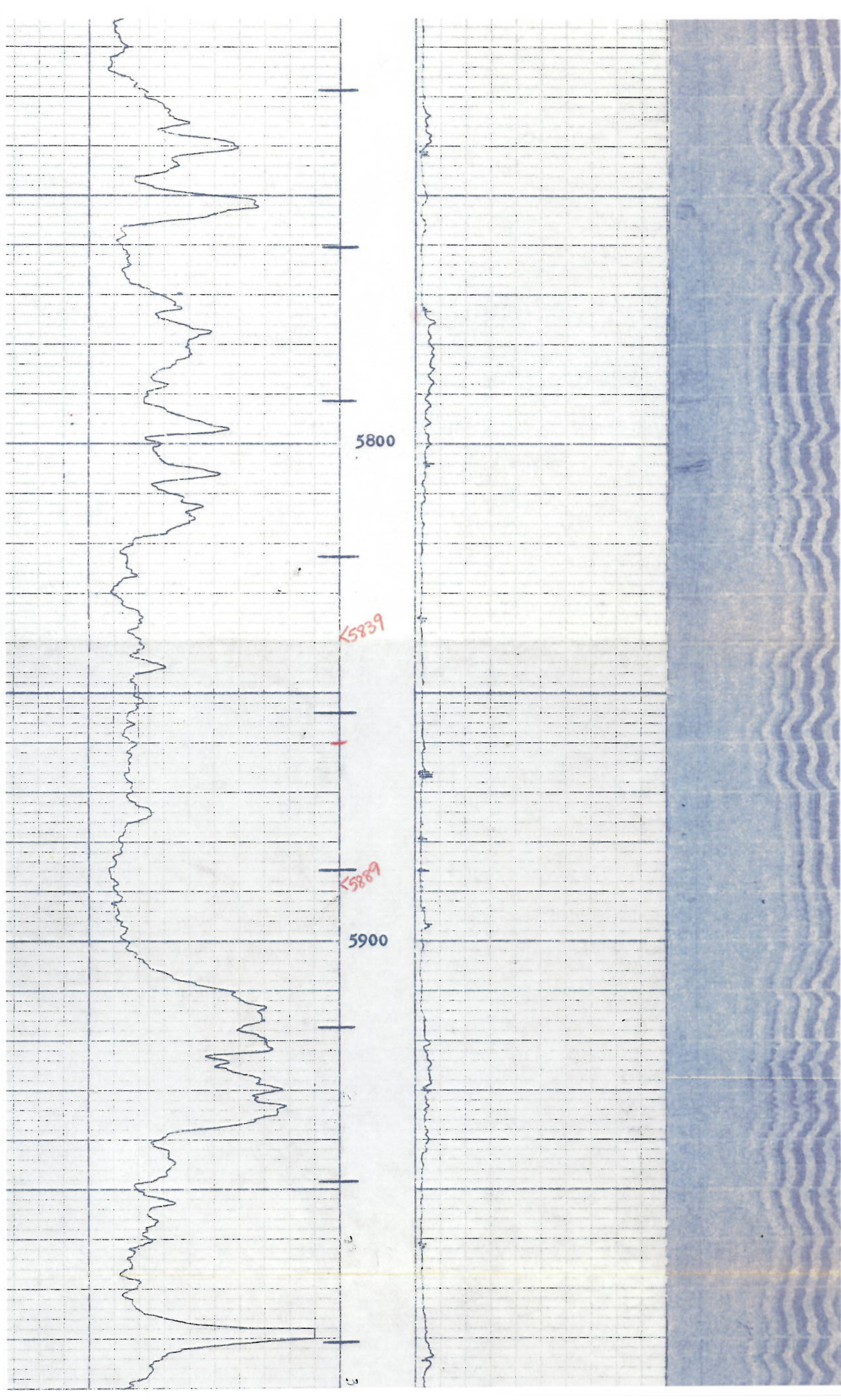
<5600

<5682

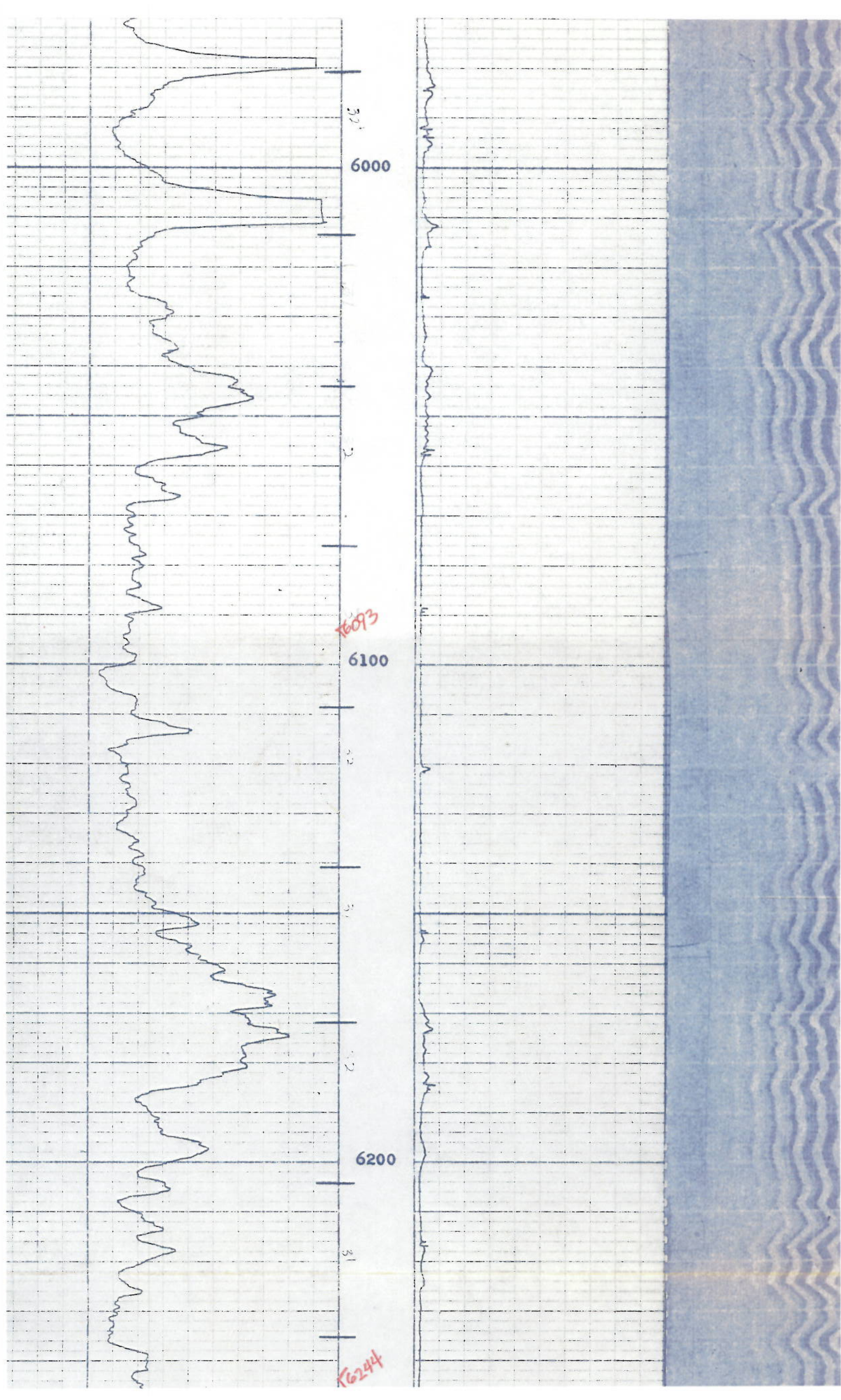
5700













T6244  
T6249

T6271

6300

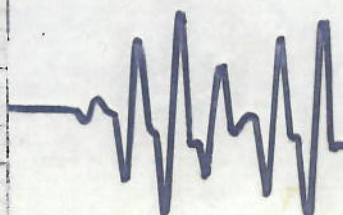
7"

6398° SCH.

CO. BOTTOM 6400°  
McC. BOTTOM 6403° (6401° SCH.)

SIGNAL TAKEN  
AT 3820°

REPEAT SECTION RUN AT McCULLOUGH DEPTH





6250

SIGNAL TAKEN  
AT 6398'

6300

6400' MGS.

CHEVRON OIL CO.  
CARNEY 23-X-35  
RANGELY FIELD  
DATE: 2-21-70