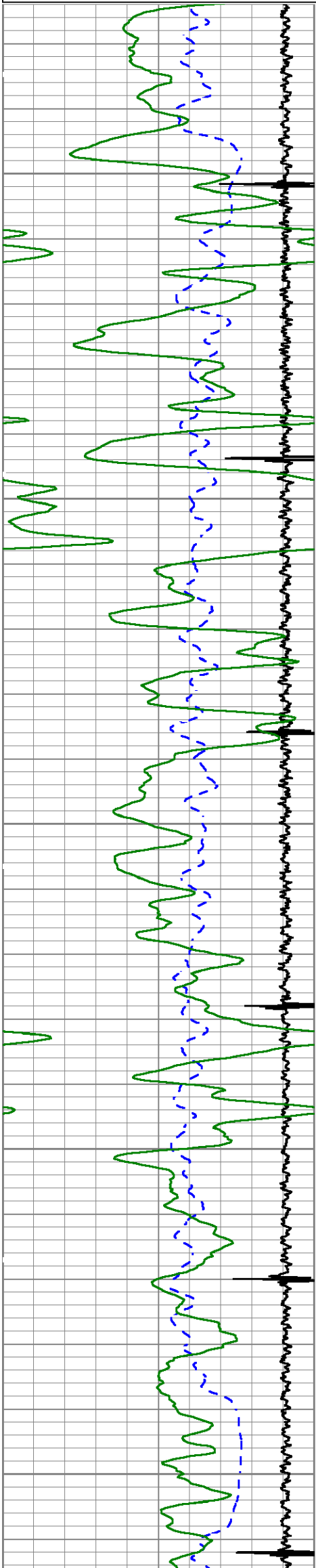




Gamma Ray (GAPI) 150

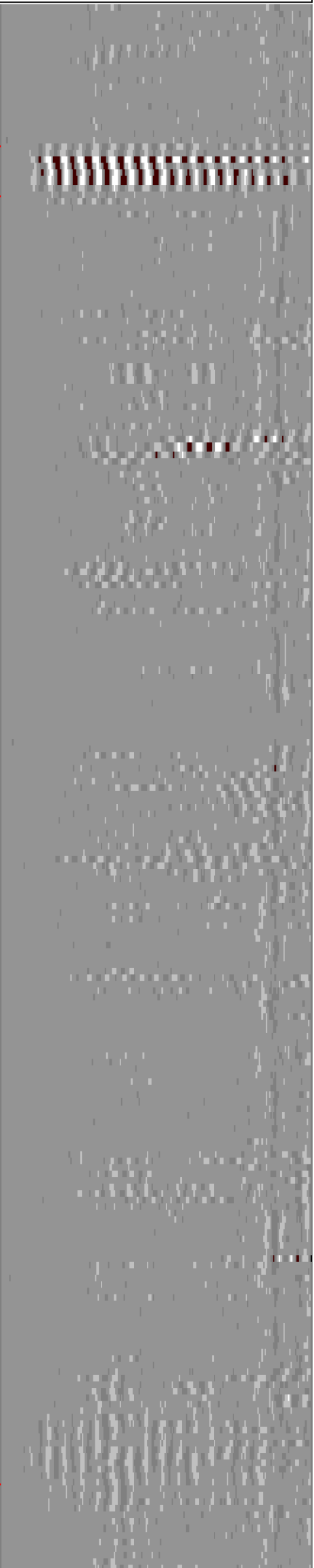
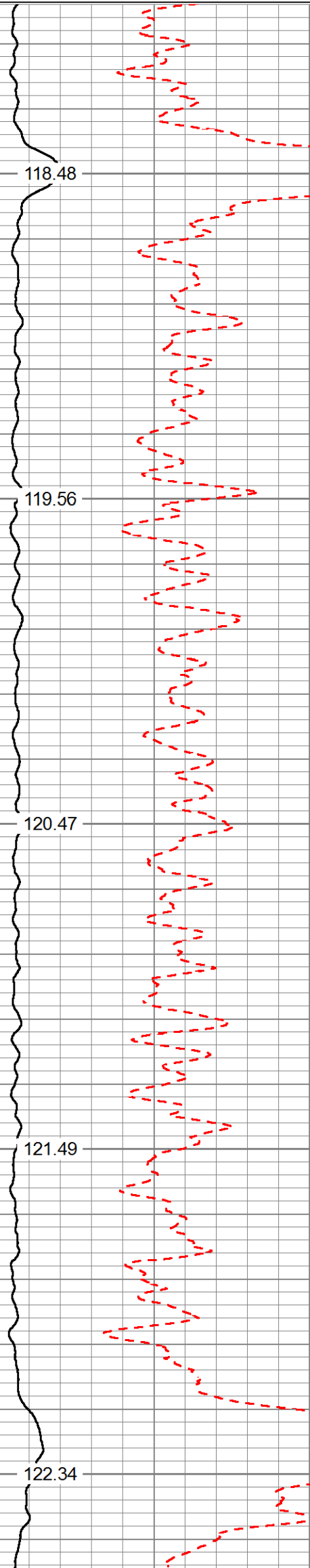
CblTemp  
(degF)

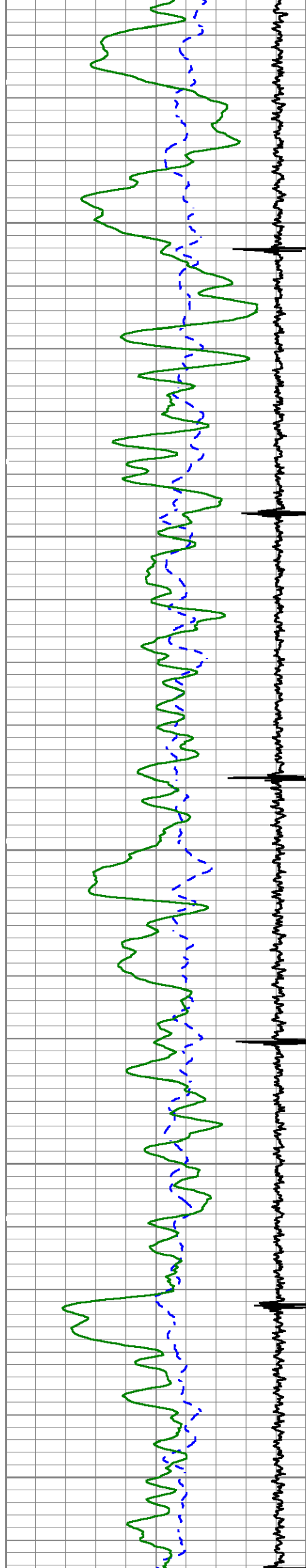


1700

1800

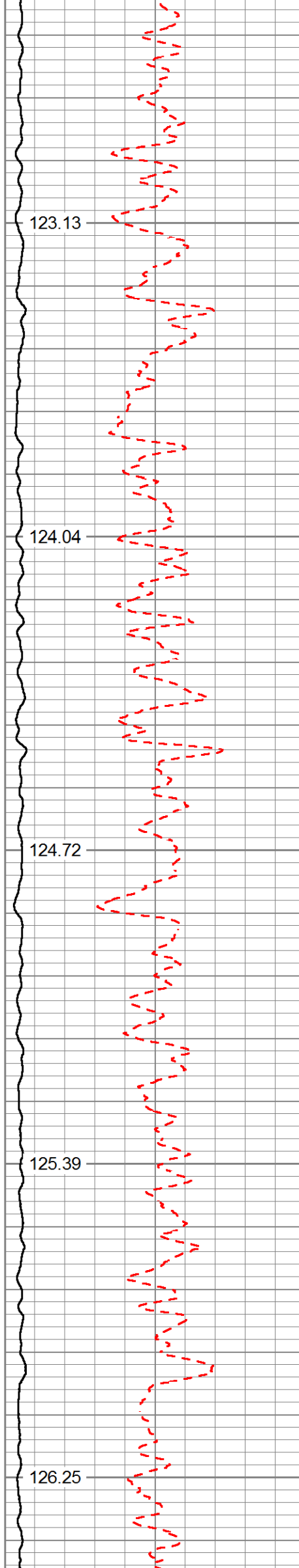
1900





2000

2100



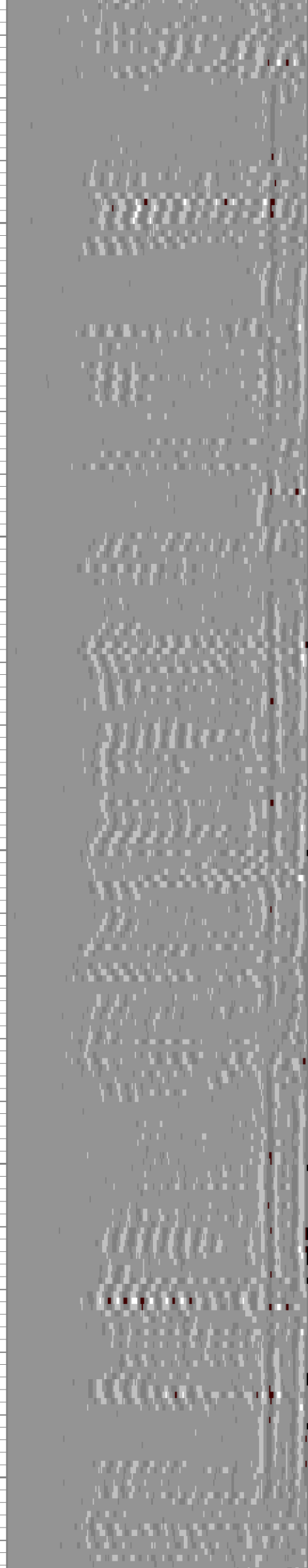
123.13

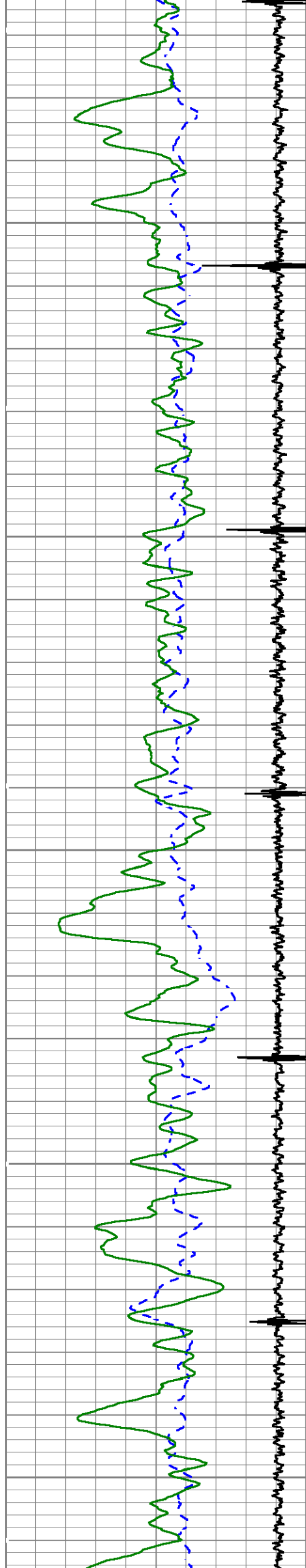
124.04

124.72

125.39

126.25

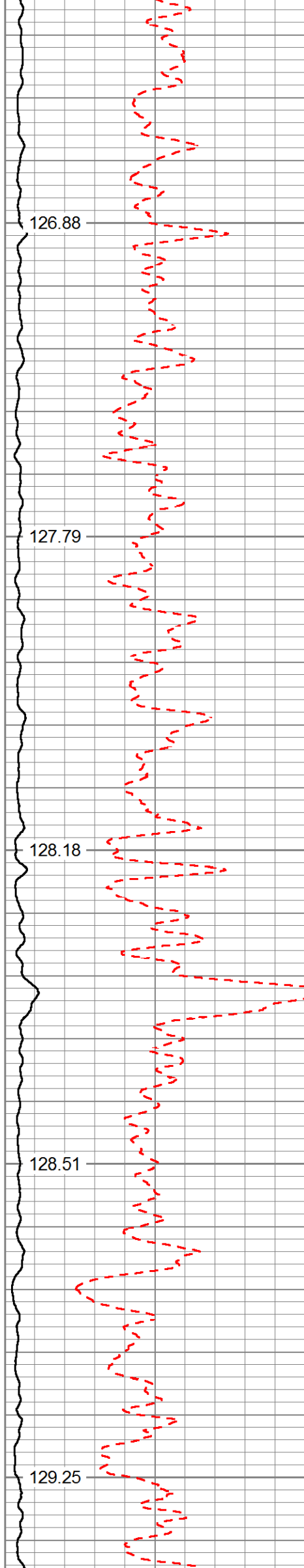




2200

2300

2400



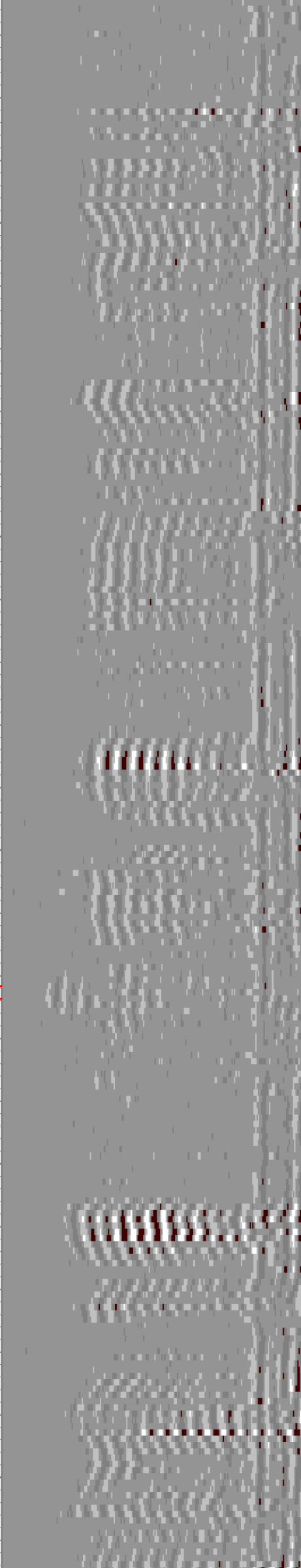
126.88

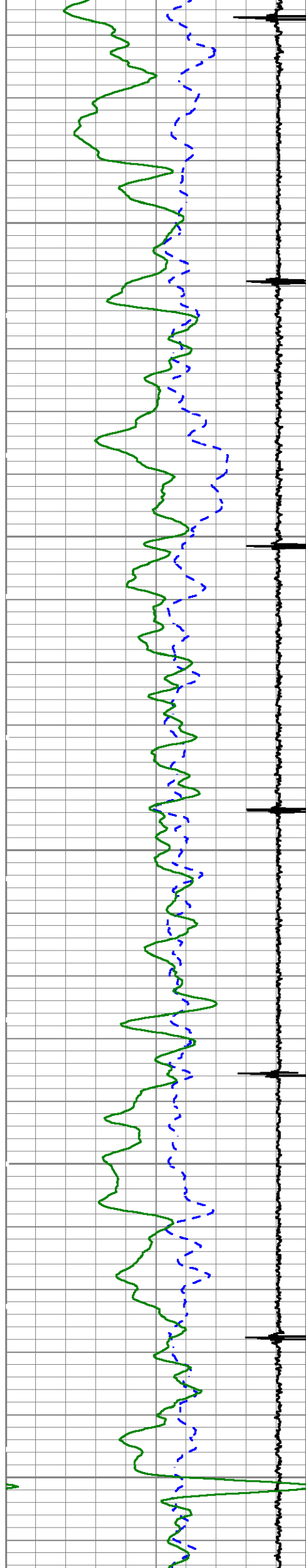
127.79

128.18

128.51

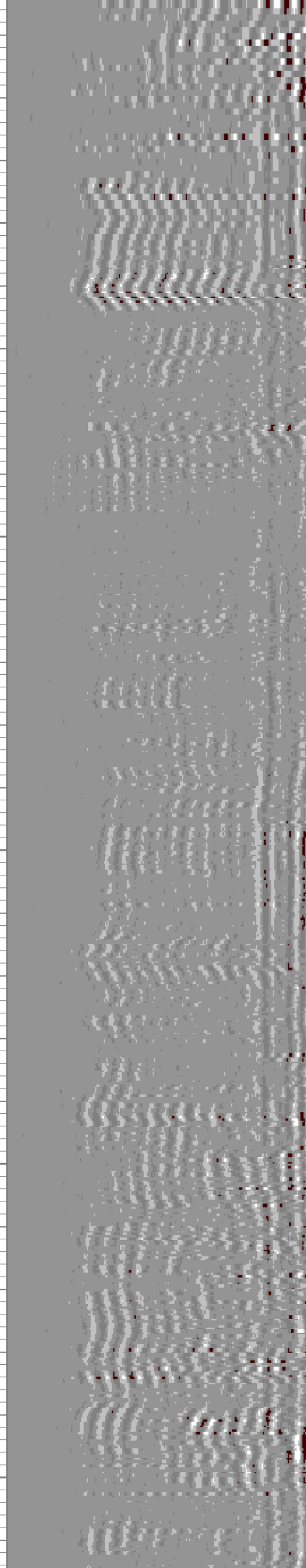
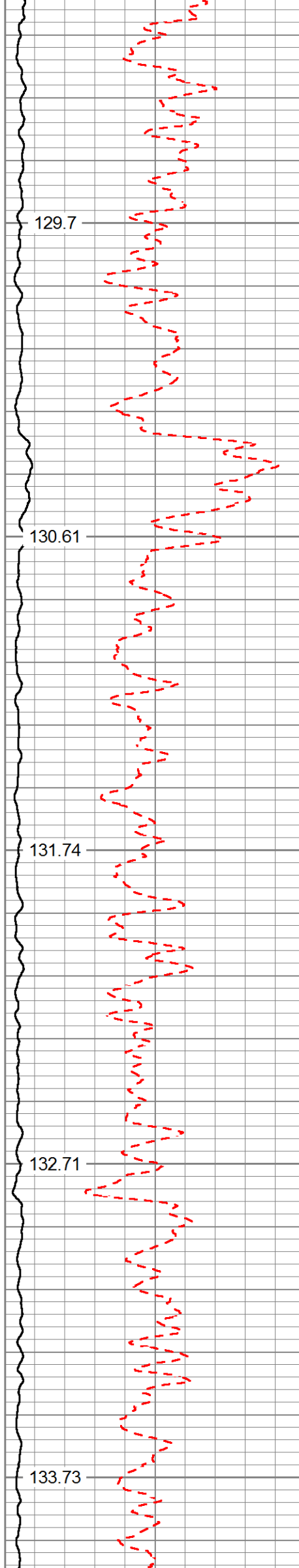
129.25

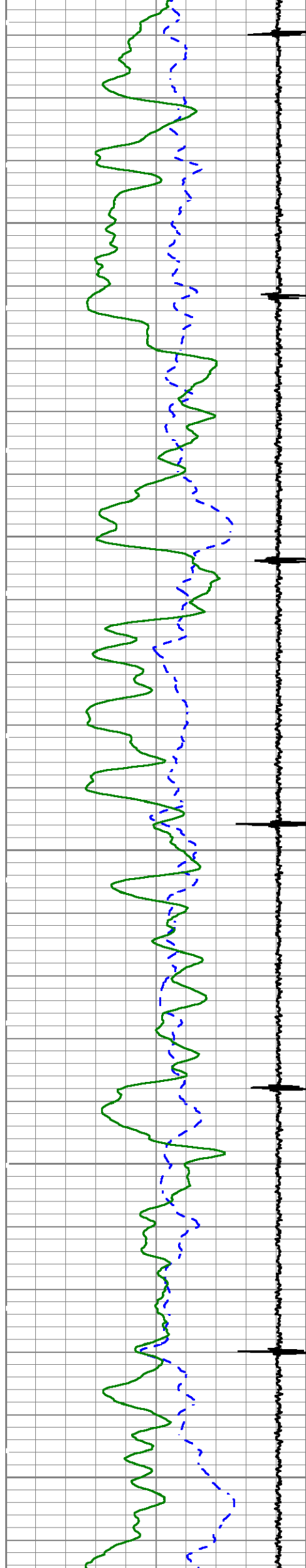




2500

2600

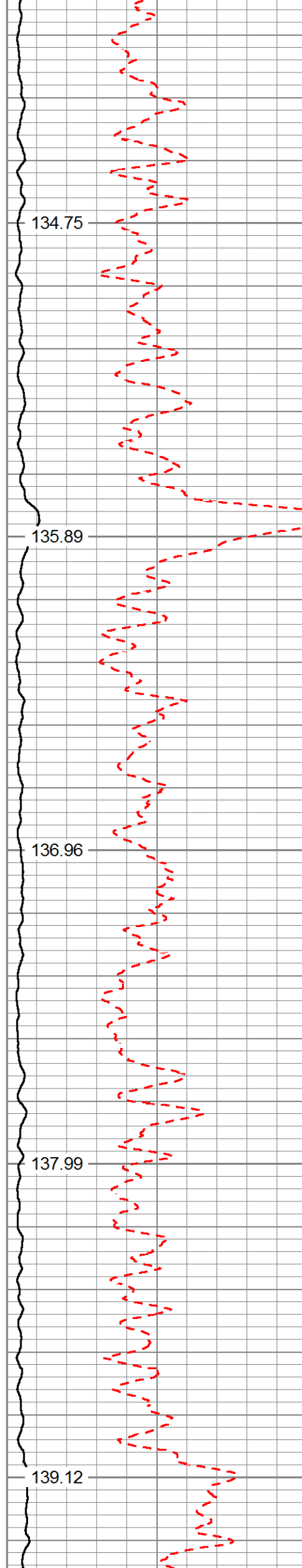




2700

2800

2900



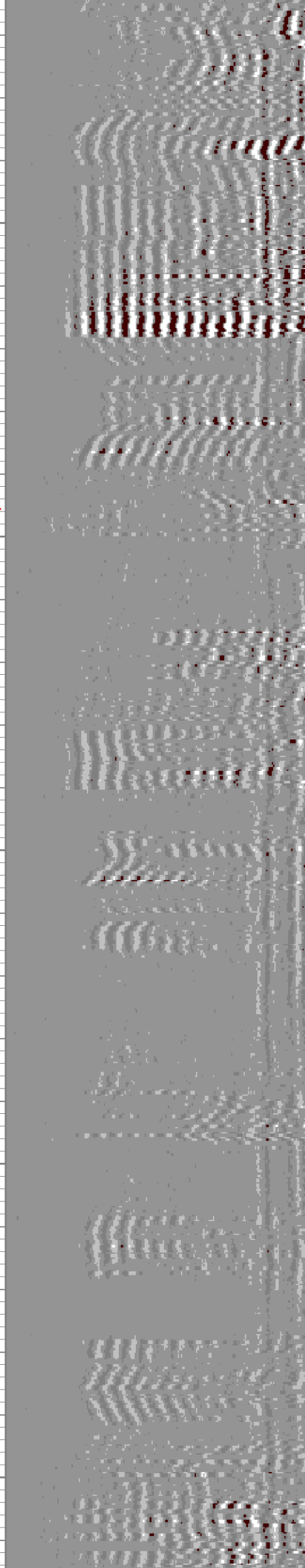
134.75

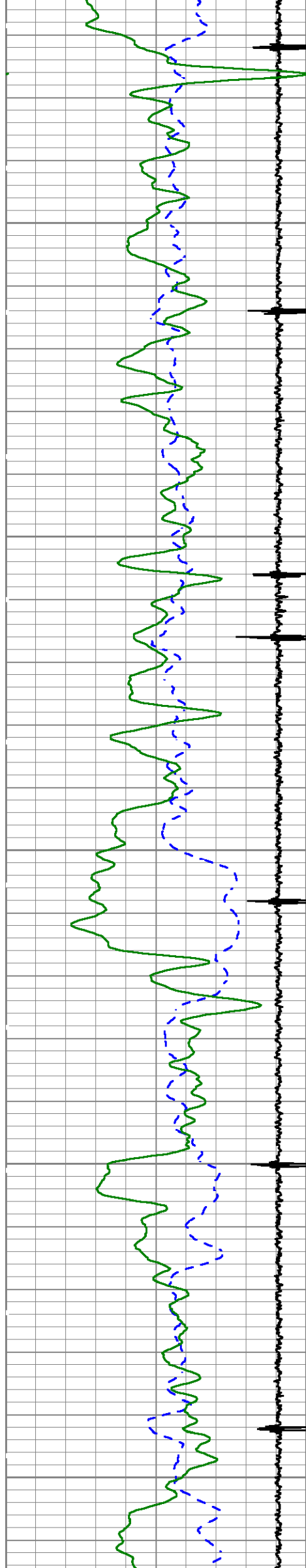
135.89

136.96

137.99

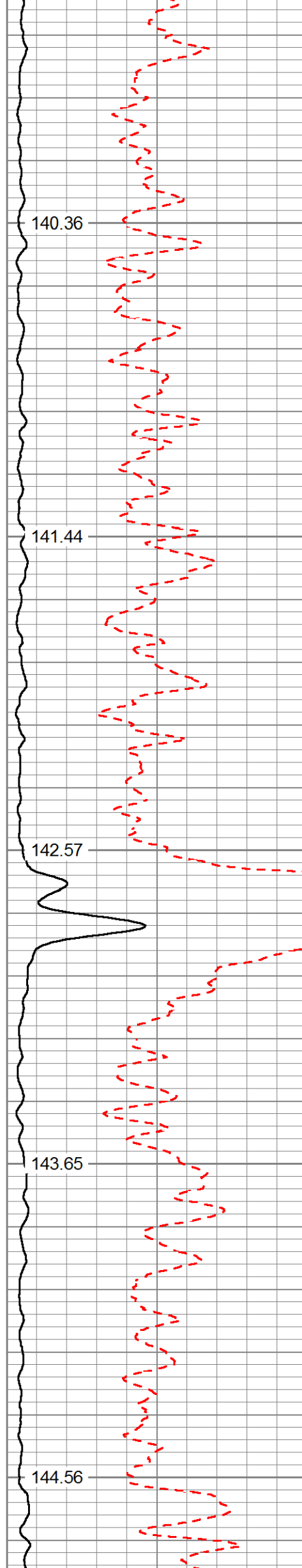
139.12





3000

3100



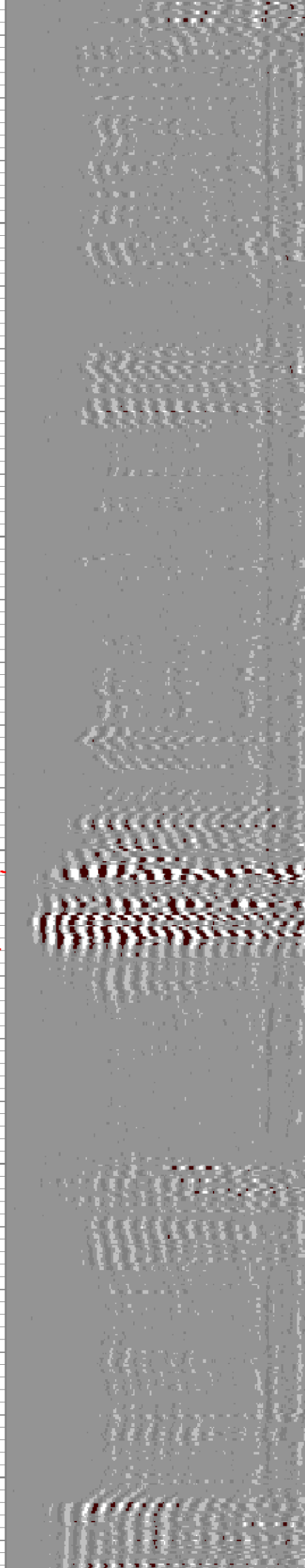
140.36

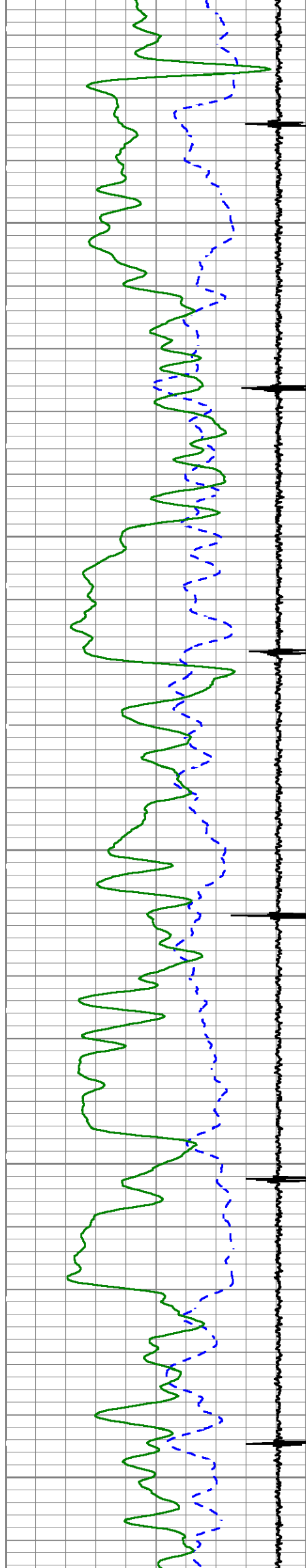
141.44

142.57

143.65

144.56

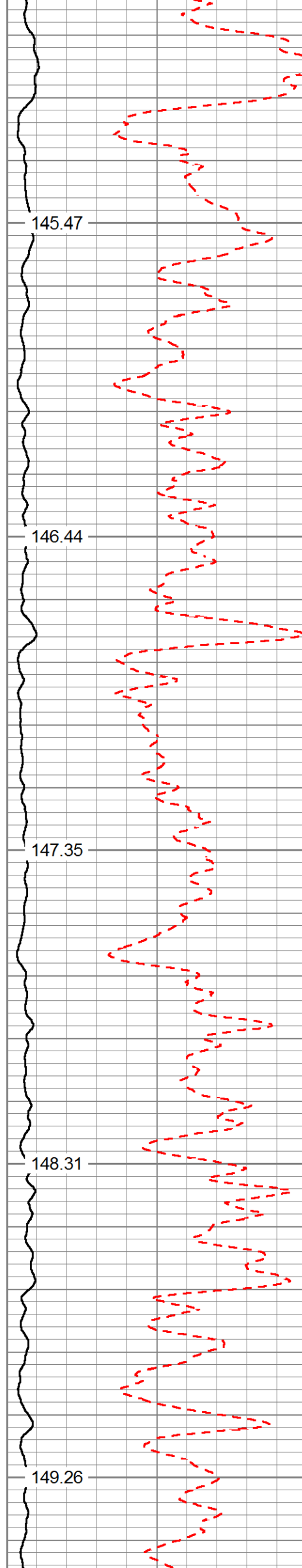




3200

3300

3400



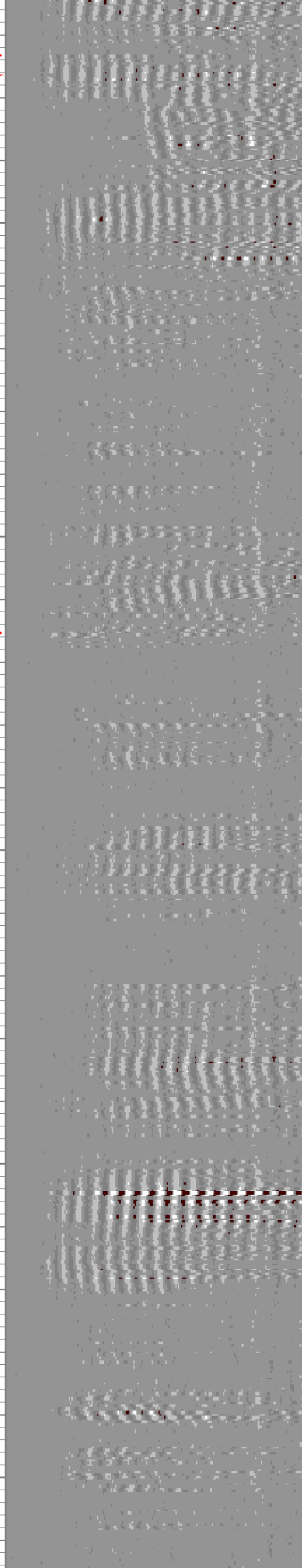
145.47

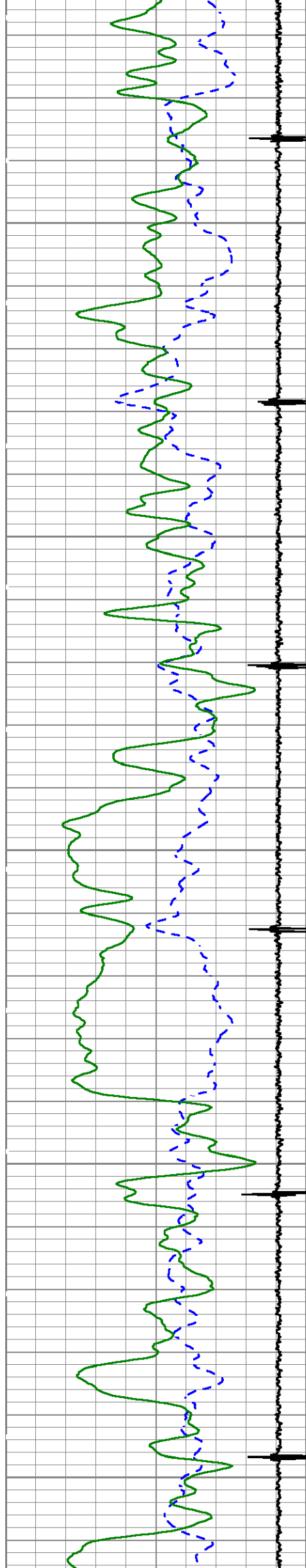
146.44

147.35

148.31

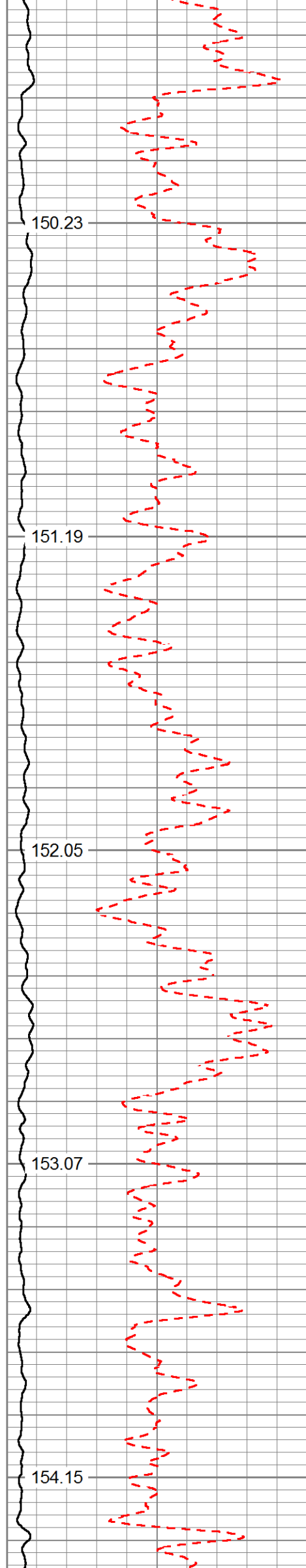
149.26





3500

3600



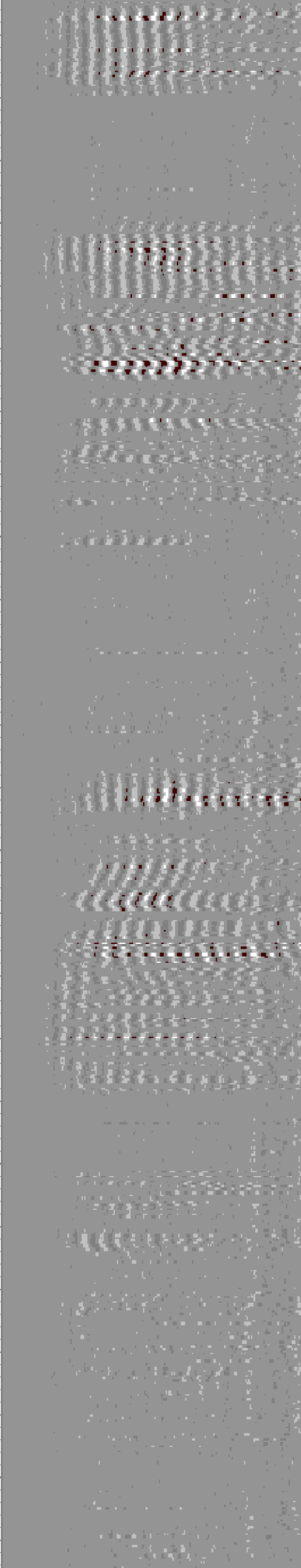
150.23

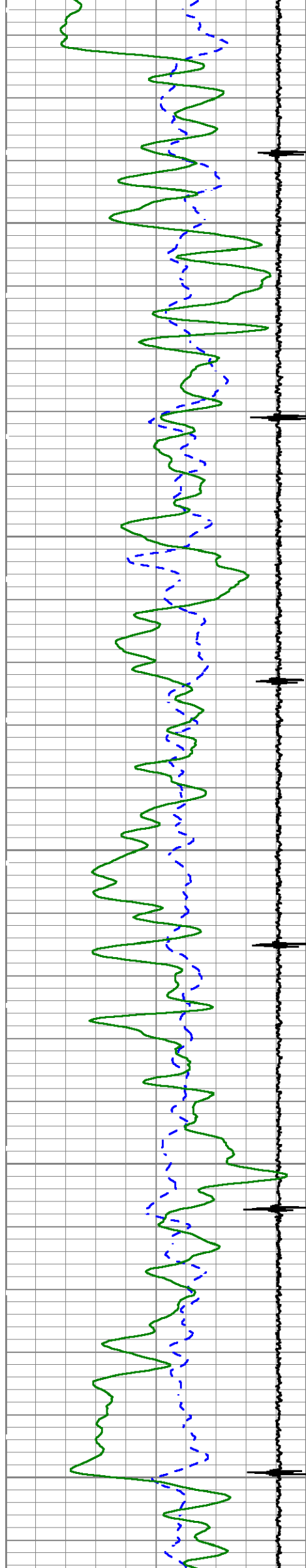
151.19

152.05

153.07

154.15

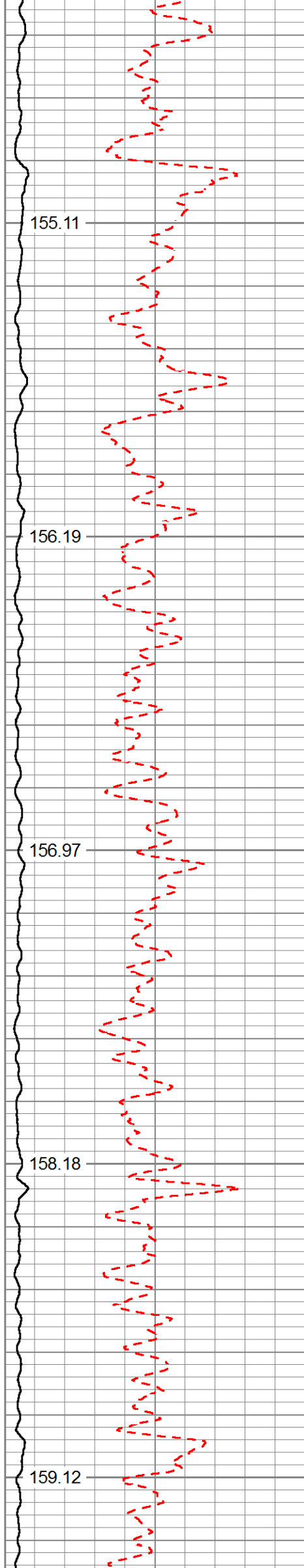




3700

3800

3900



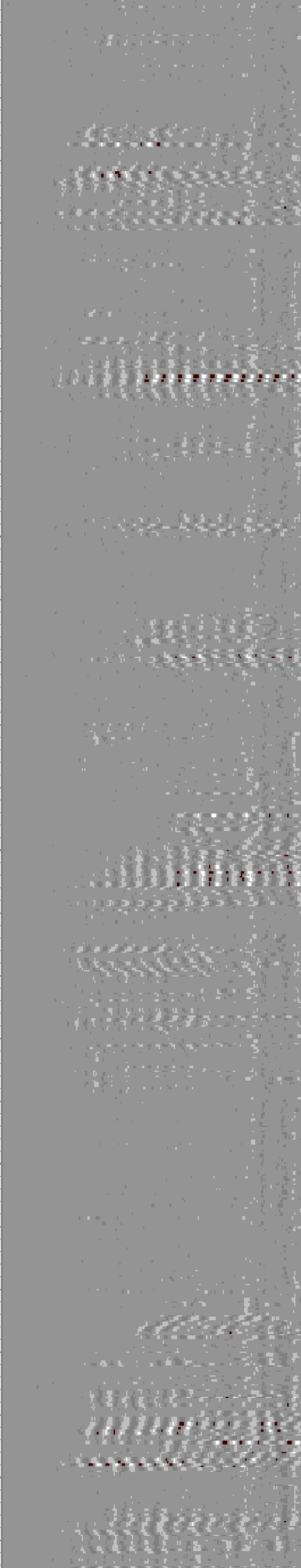
155.11

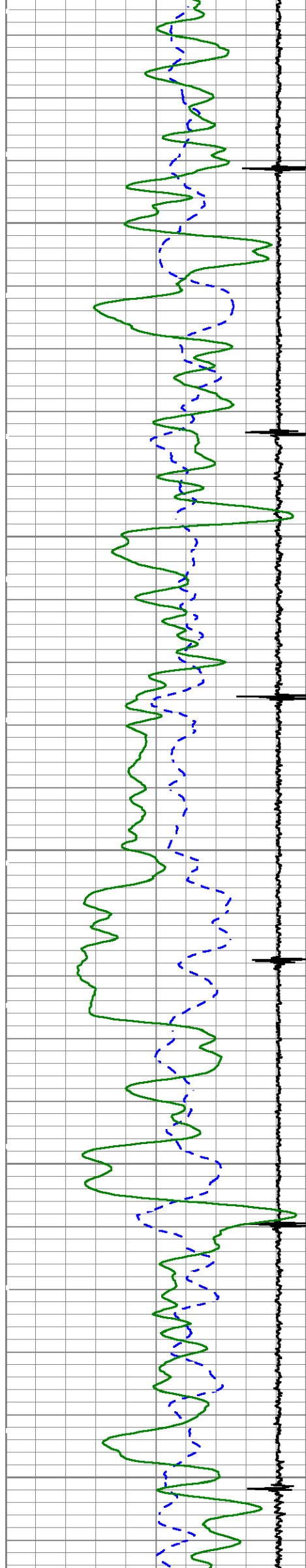
156.19

156.97

158.18

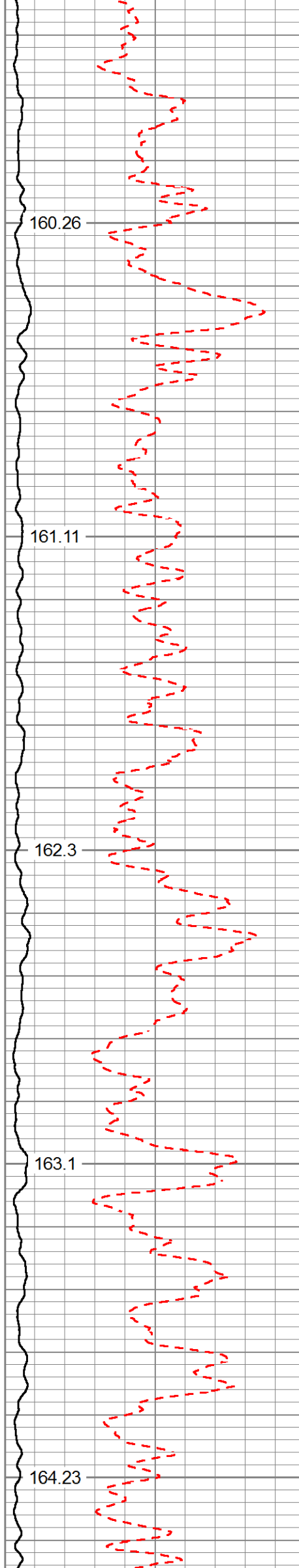
159.12





4000

4100



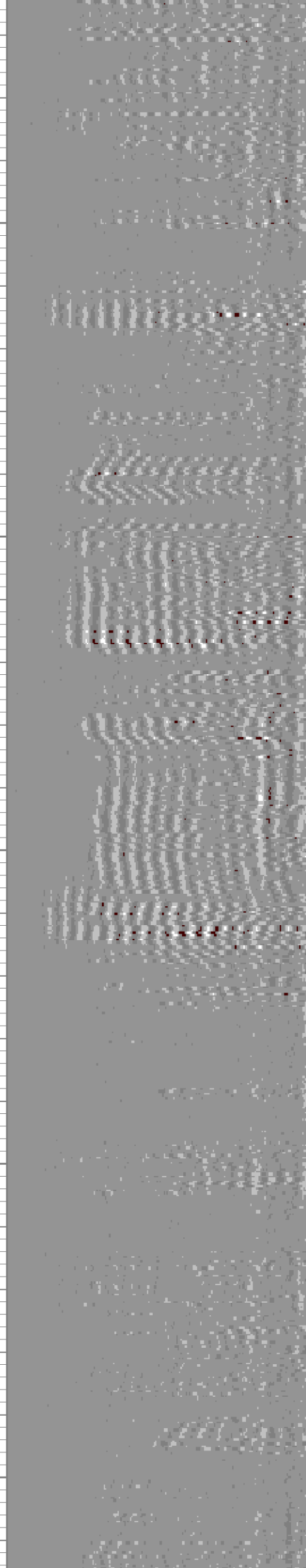
160.26

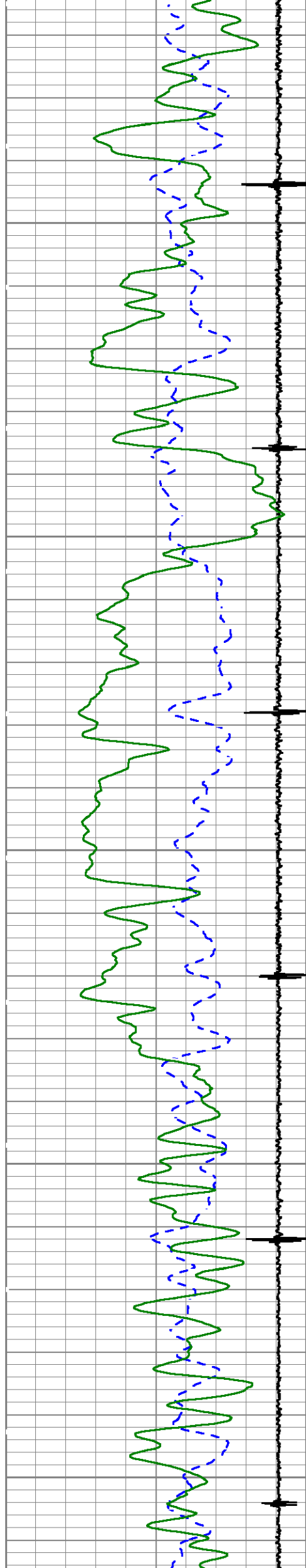
161.11

162.3

163.1

164.23

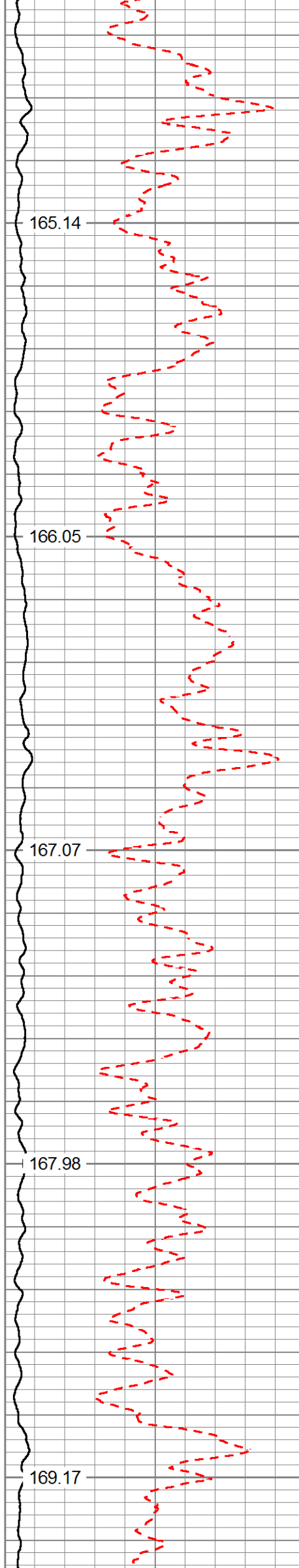




4200

4300

4400



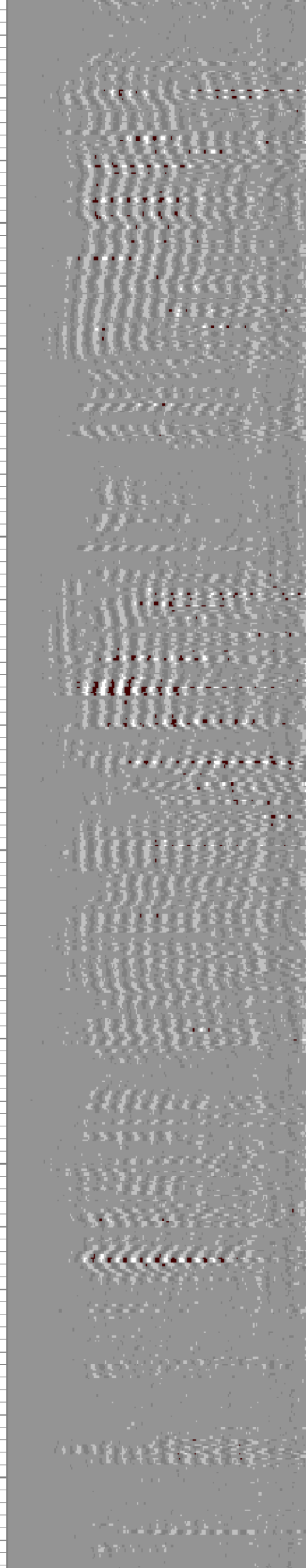
165.14

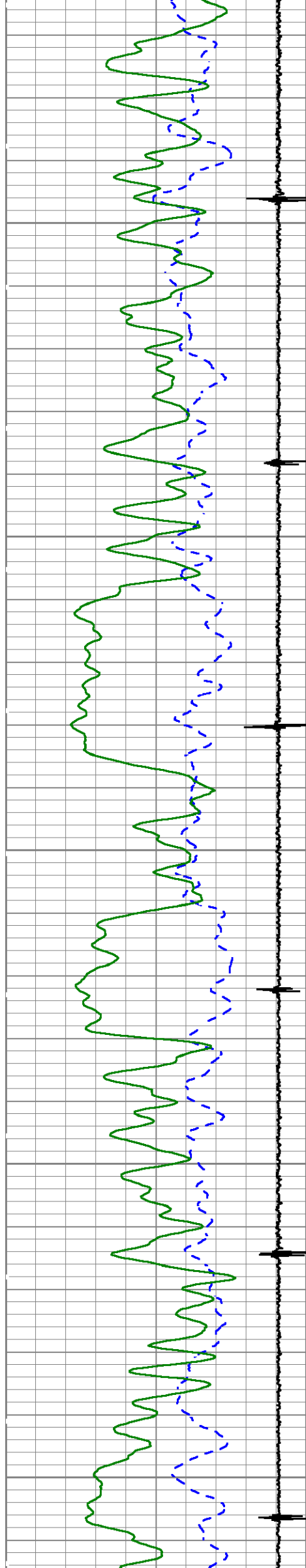
166.05

167.07

167.98

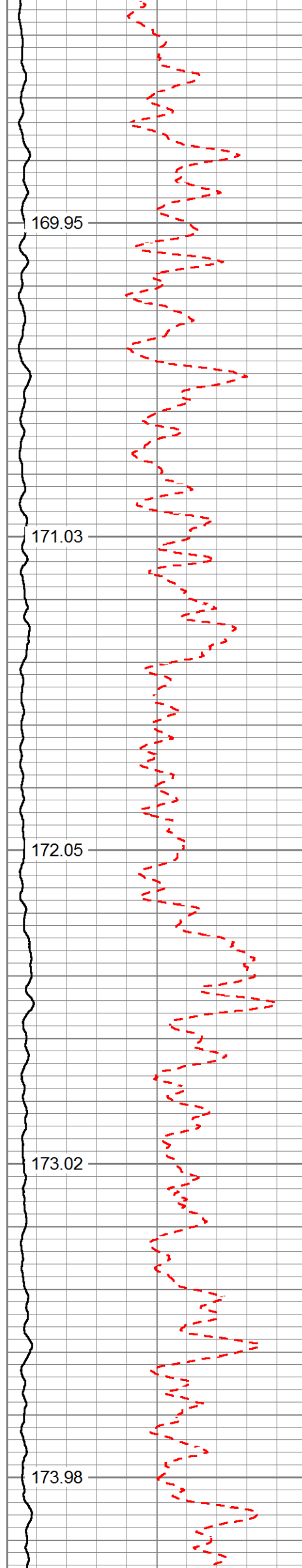
169.17





4500

4600



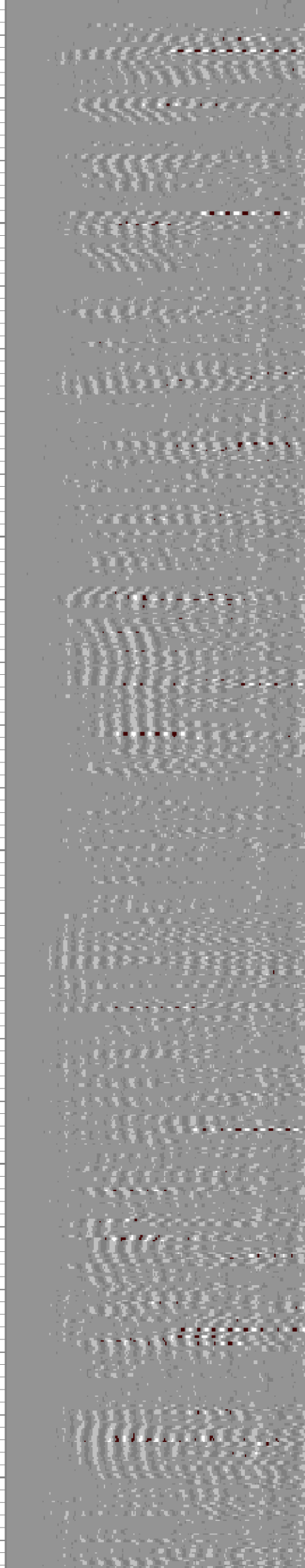
169.95

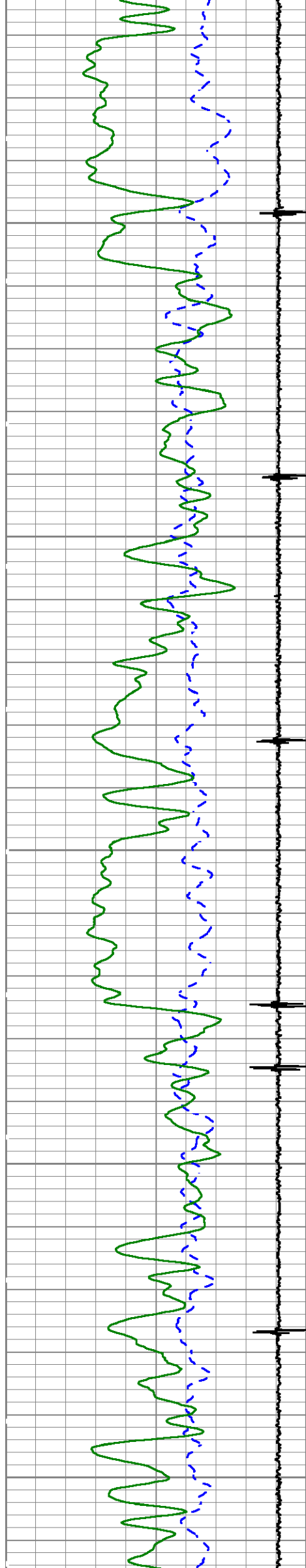
171.03

172.05

173.02

173.98

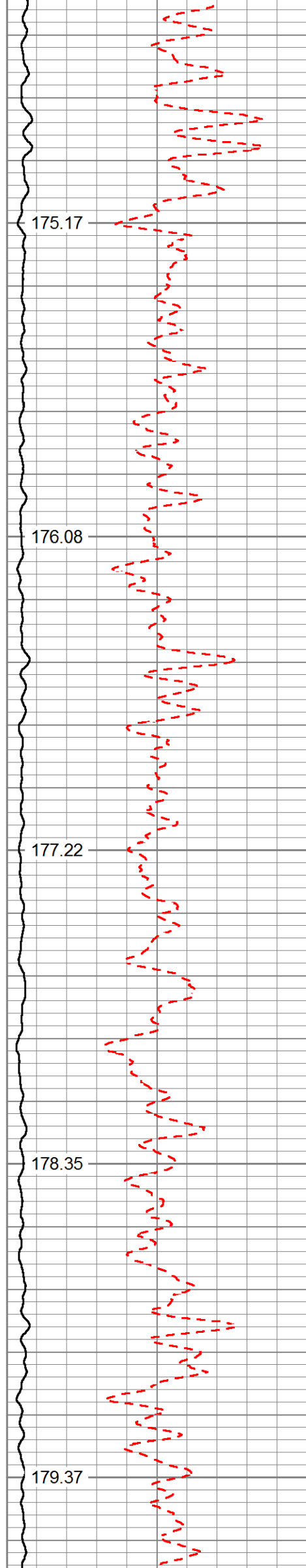




4700

4800

4900



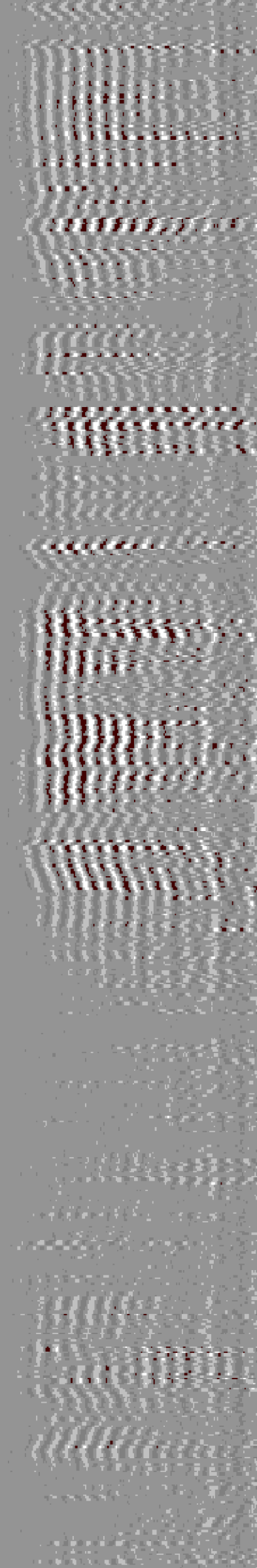
175.17

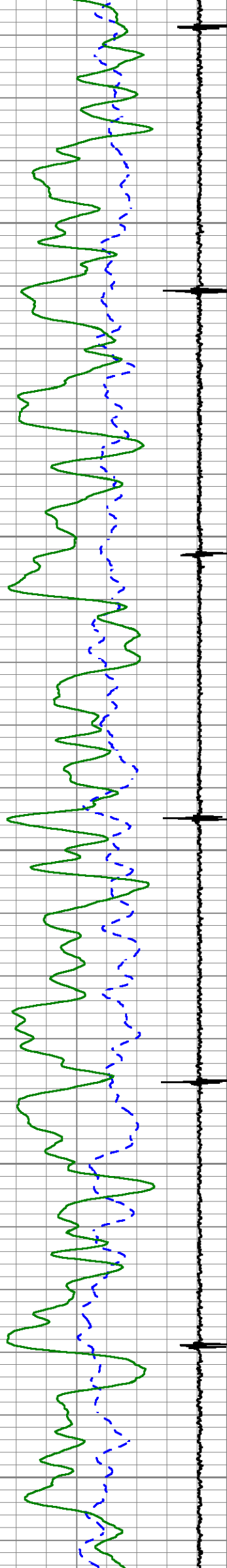
176.08

177.22

178.35

179.37





5000

5100

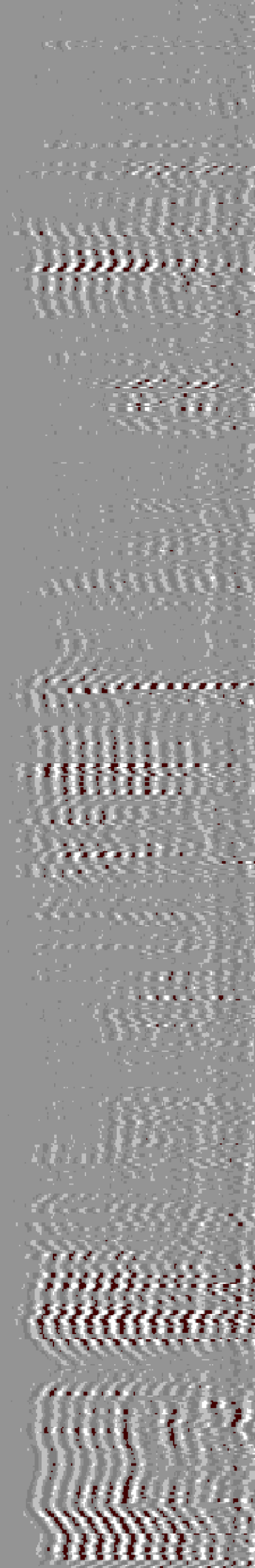
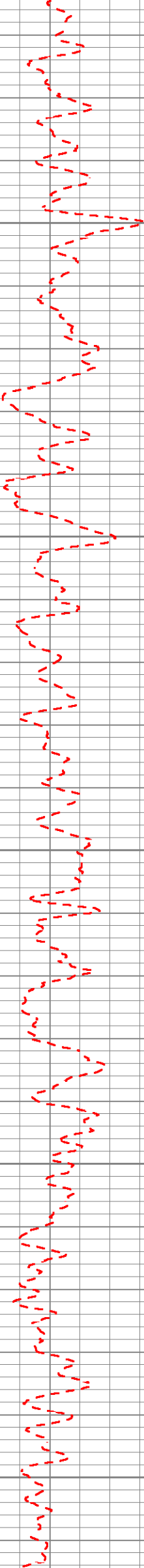
180.39

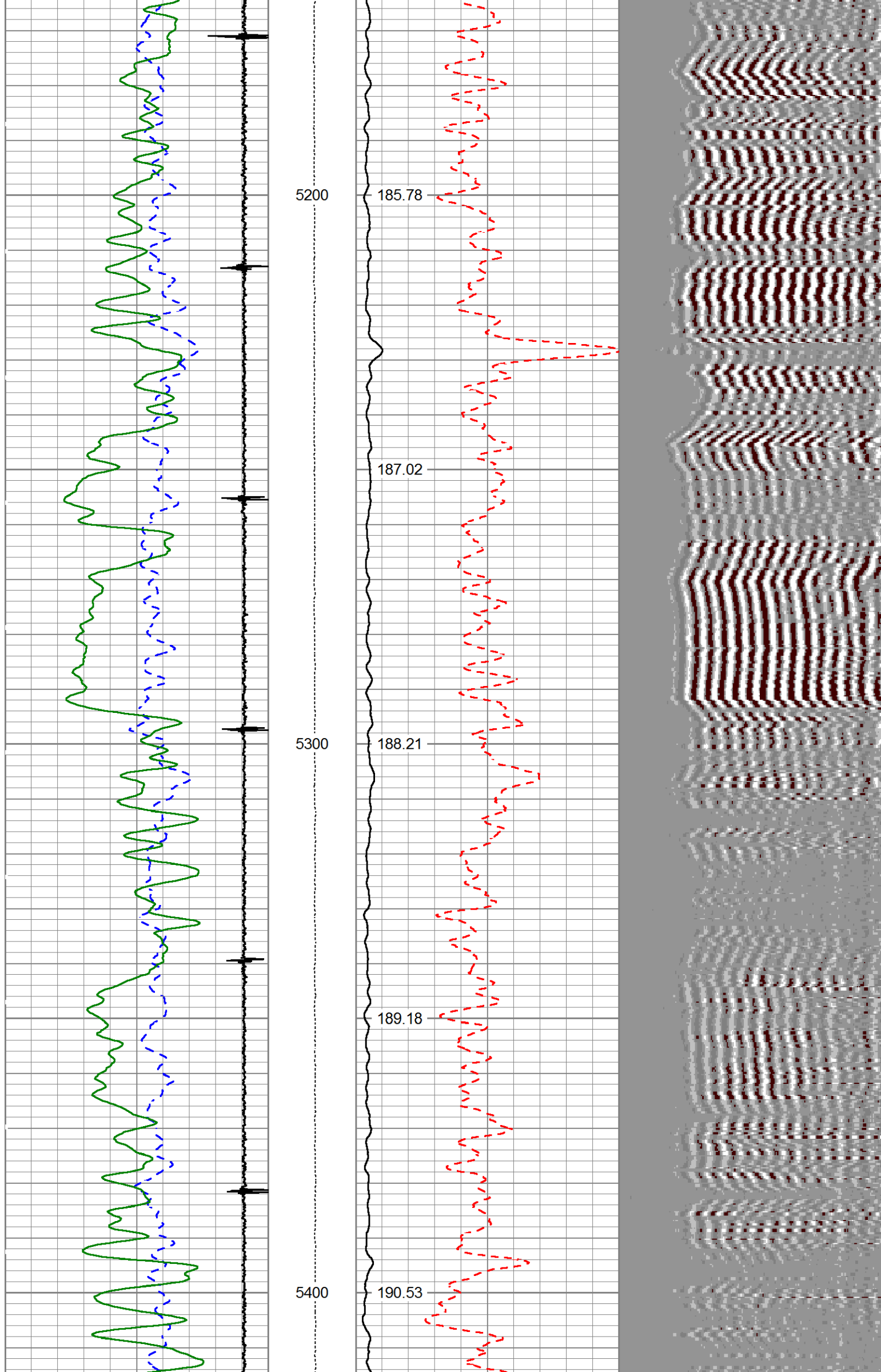
181.47

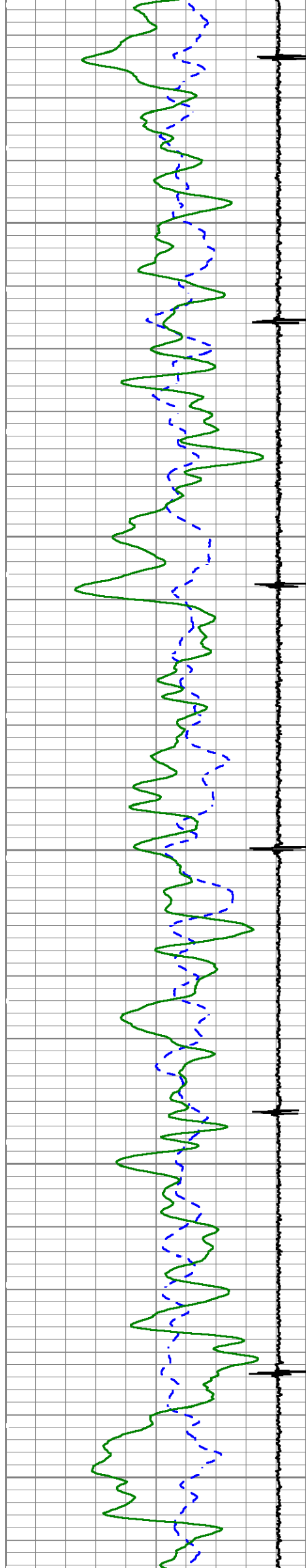
182.6

183.68

184.7

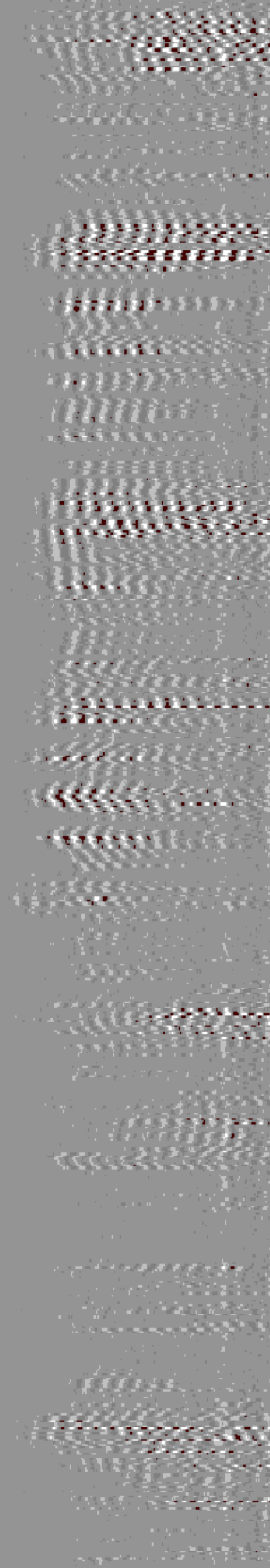
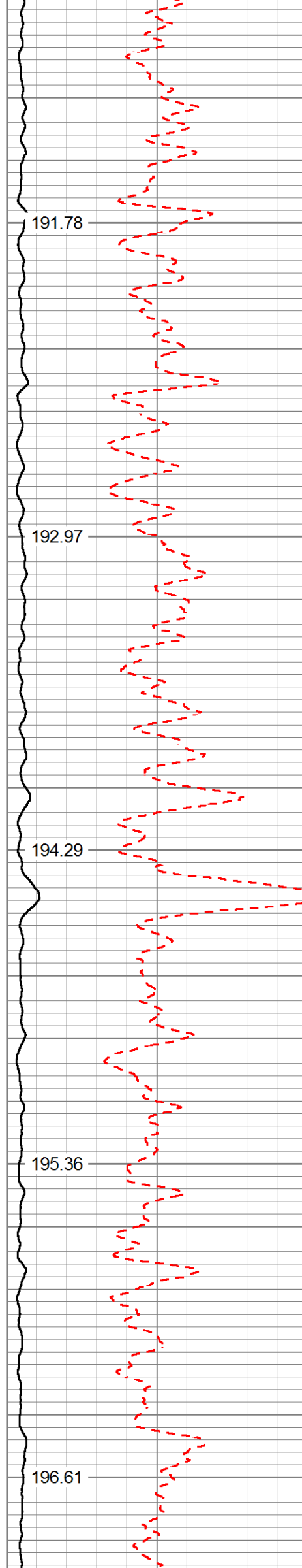


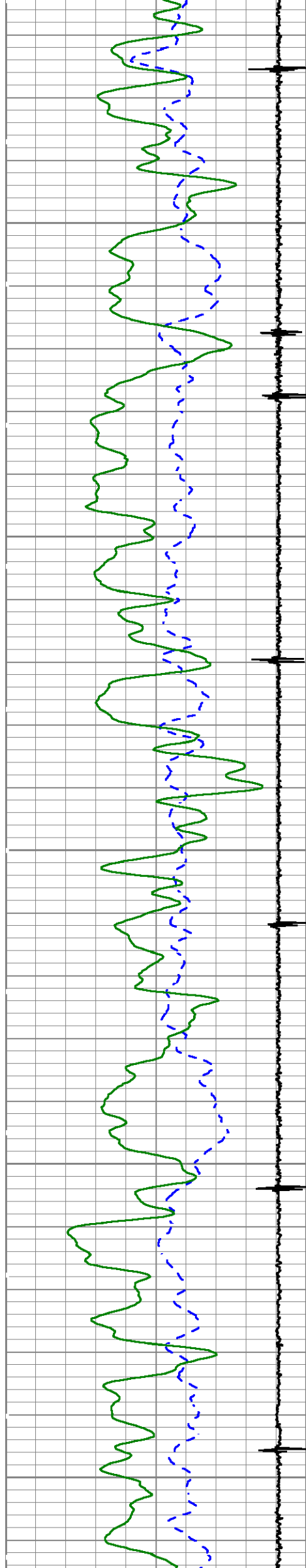




5500

5600

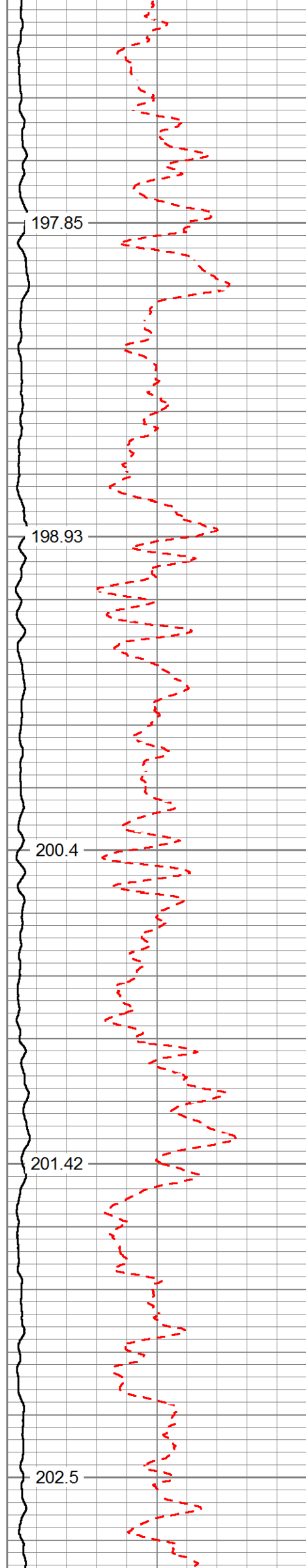




5700

5800

5900



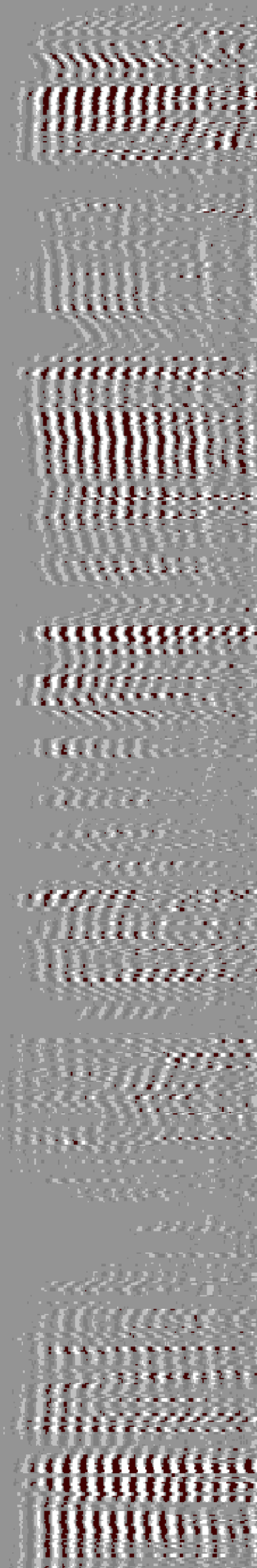
197.85

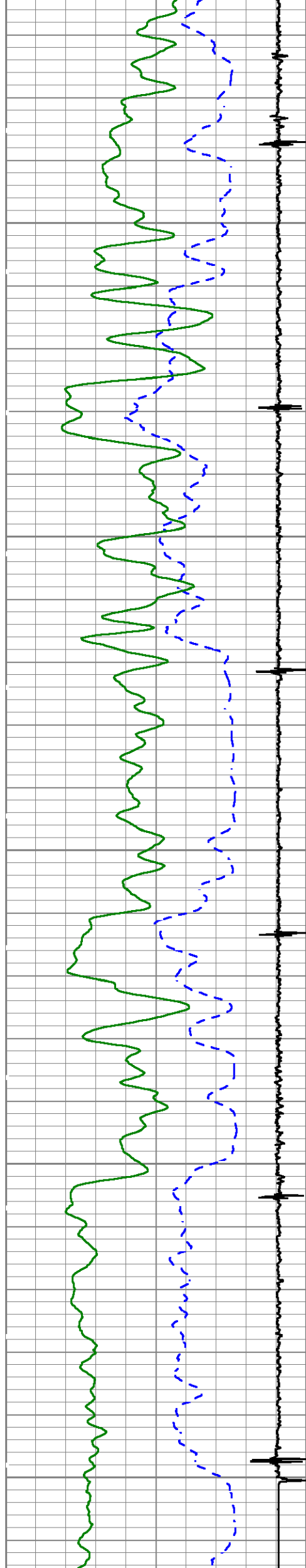
198.93

200.4

201.42

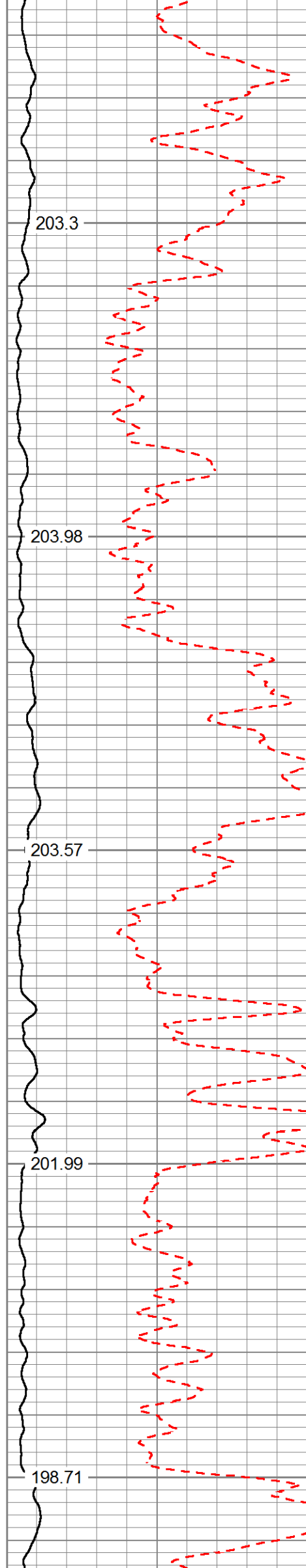
202.5





6000

6100



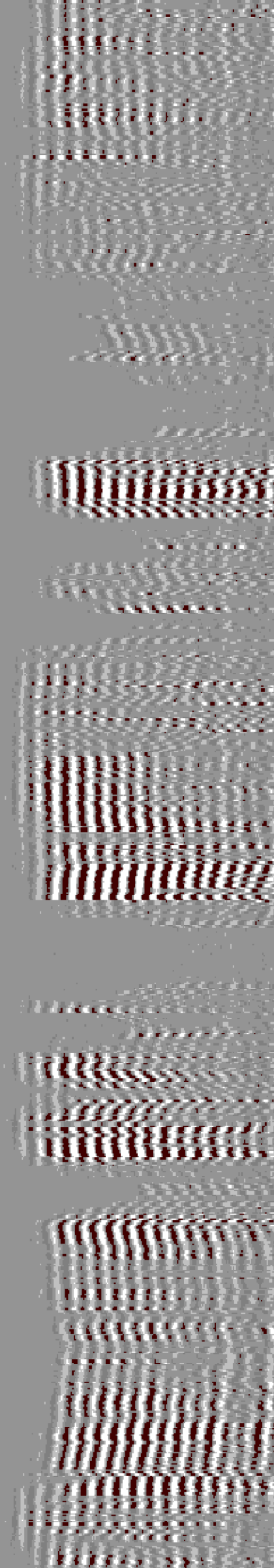
203.3

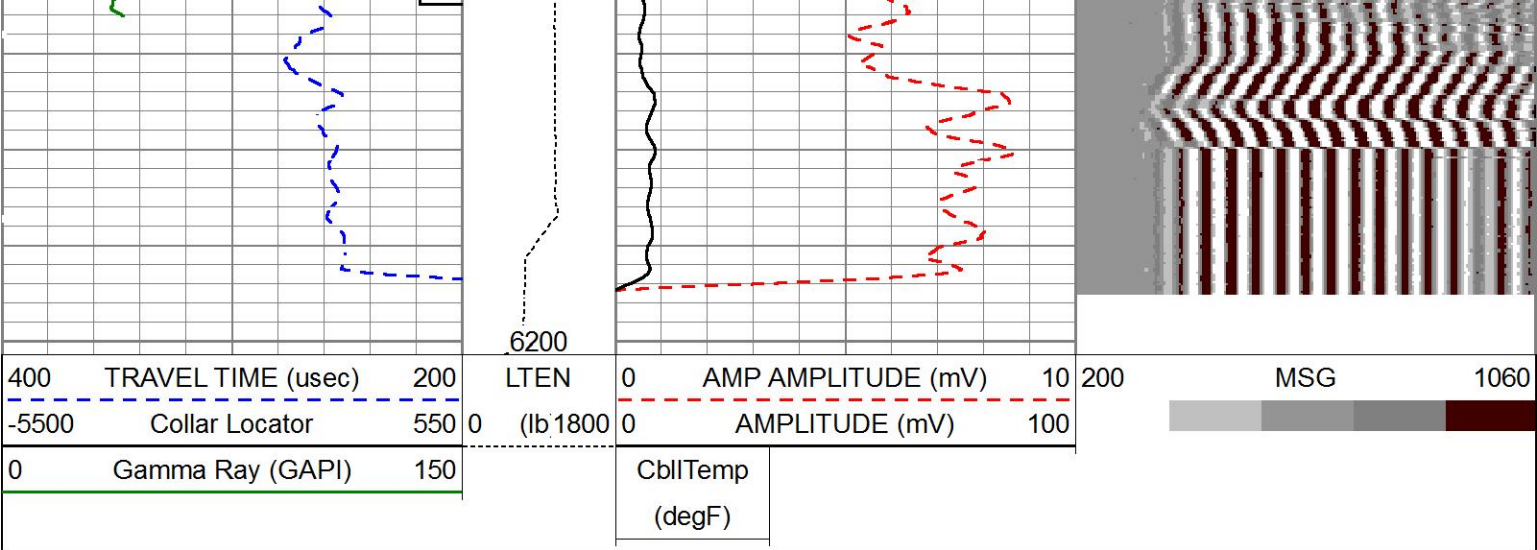
203.98

203.57

201.99

198.71

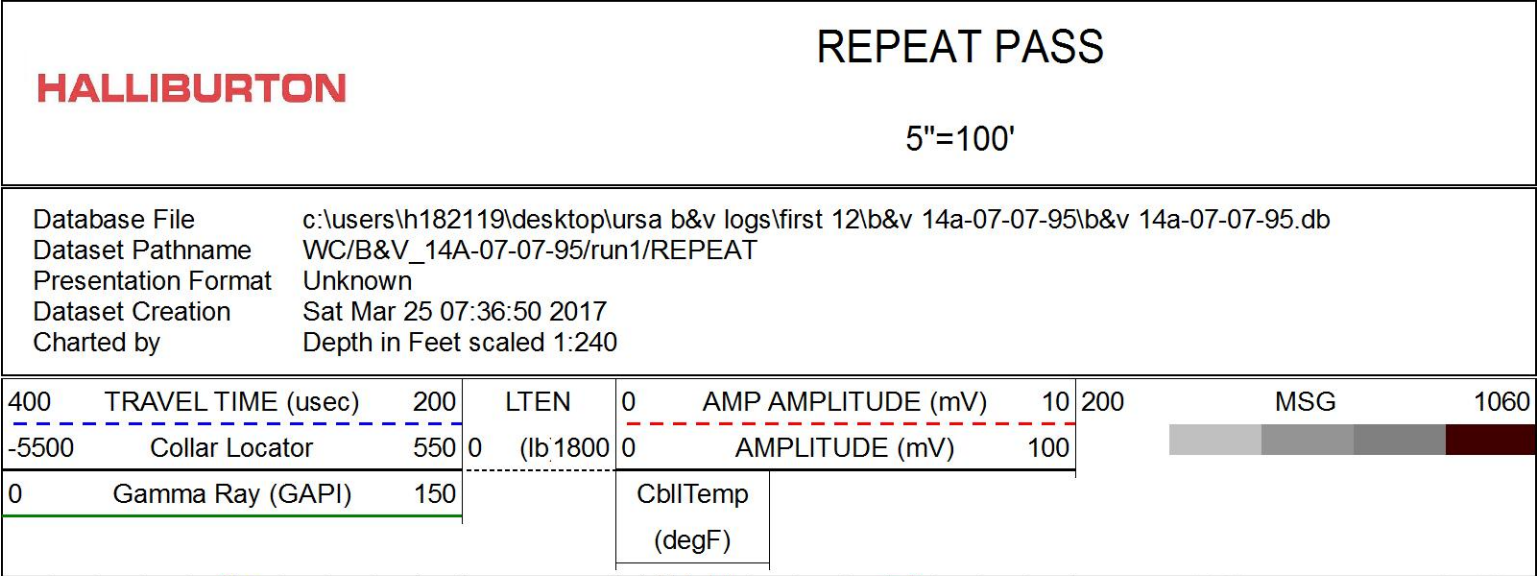




MAIN PASS

5"=100'

HALLIBURTON

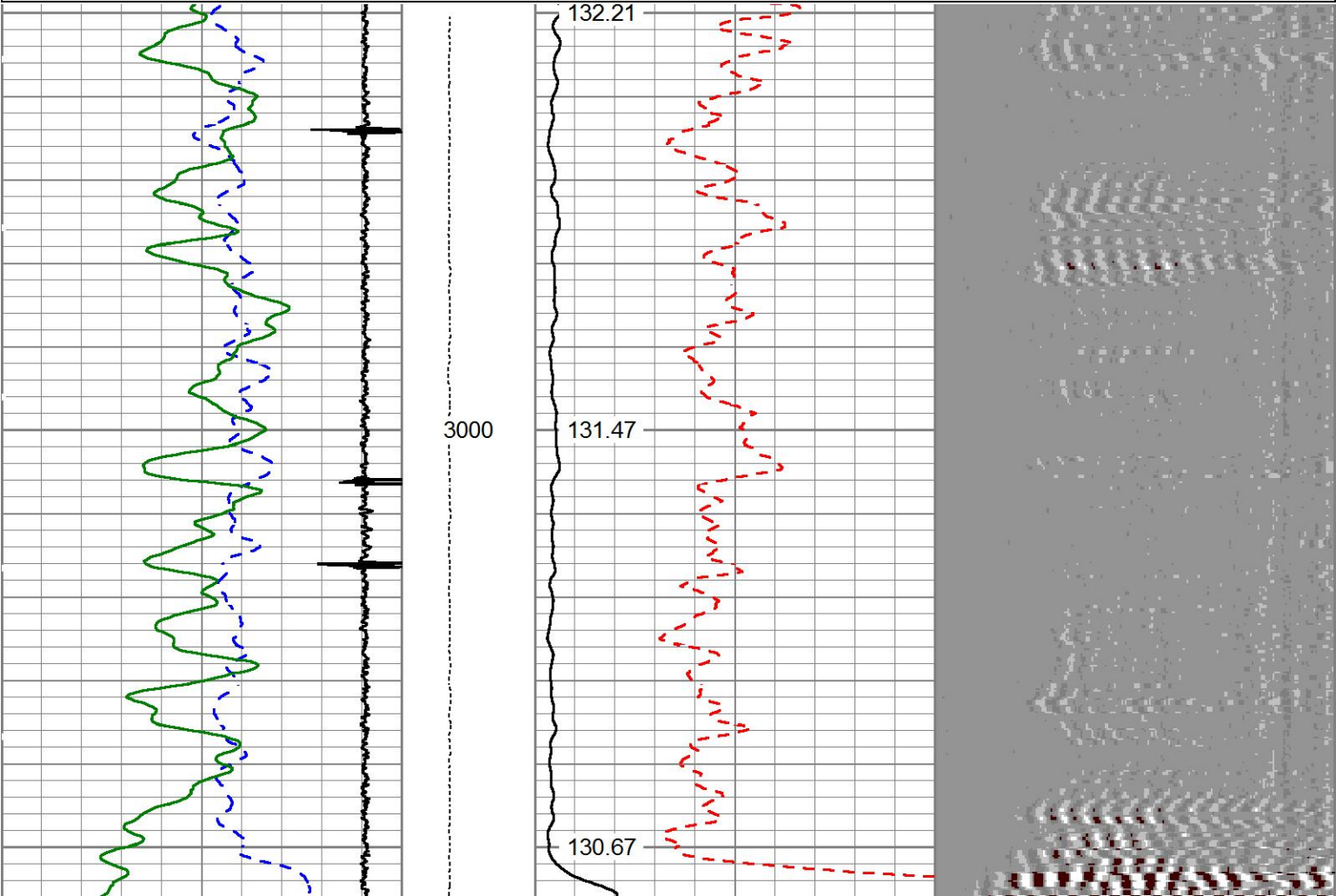


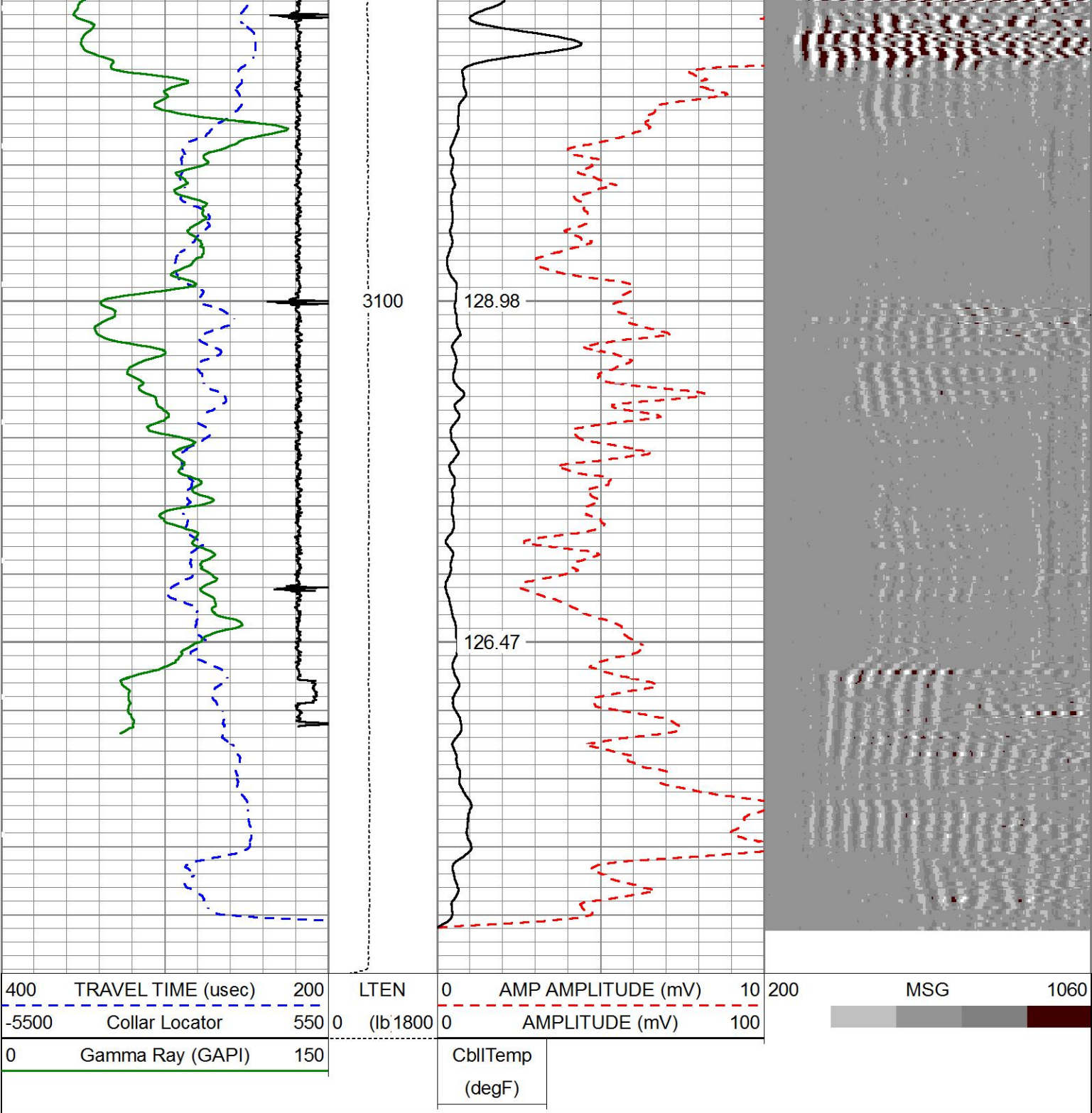
REPEAT PASS

5"=100'

HALLIBURTON

Database File c:\users\h182119\desktop\ursa b&v logs\first 12\b&v 14a-07-07-95\b&v 14a-07-07-95.db  
Dataset Pathname WC/B&V\_14A-07-07-95/run1/REPEAT  
Presentation Format Unknown  
Dataset Creation Sat Mar 25 07:36:50 2017  
Charted by Depth in Feet scaled 1:240





REPEAT PASS

5"=100'


HALLIBURTON

Calibration Report	
Database File	C:\Users\H182119\Desktop\URSA B&V LOGS\FIRST 12\B&V 14A-07-07-95\b&v 14a-07-07-95.db
Dataset Pathname	WC/B&V_14A-07-07-95/run1/MAIN
Dataset Creation	Sat Mar 25 08:13:29 2017
Cement Bond Log Shop Calibration Report	
Serial-Model:	12091454-A
Calibration Performed:	Sat Mar 25 07:11:53 2017

Free Pipe Calibration		
TT	Measured	Units
Amplitude	246.0	uSec
Log Base Line	593.2	mV
	14.3	mV

Calibration References and Gain					
Name	Value	Units			
Pipe O.D.	4.500	in			
Pipe Weight	11.6	lb/ft			
Pipe Ref. Amp.	81.2	mV			
Amp. Gain	0.140				
Reservoir Monitor Tool I Calibration Report					
Serial-Model:		11917905-A			
Shop Calibration Performed:		Sat Aug 27 14:12:23 2016			
Carbon/Oxygen Mode					
Stabilization					
Result	Logged	Expected Value	Diff.	Tol.	Units
GENV	87.00	80.00	7.00	+/-15.00	V
ITCR2	3097	3250	-153	+/-250	cps
Near Detector					
	Channel	Expected Value	Amplitude	FWHM	Tol.
H	60	60 +/-2	0.0293	5.38	<6.00
Fe	206	206 +/-2	0.1005	-----	-----
NGAIN = 0.996	NZOFF = 0.5				
Far Detector					
	Channel	Expected Value	Amplitude	FWHM	Tol.
H	60	60 +/-2	0.0381	5.90	<6.50
Fe	209	208 +/-2	0.0928	-----	-----
FGAIN = 0.990	FZOFF = 0.9				
Flask Temperature	64.9 degF				
Result	Logged	Expected Value	Diff.	Tol.	Units
COIR2	0.44	0.45	-0.01	+/-0.02	
LIRI2	1.38	1.36	0.02	+/-0.05	
TCCR2	3970	4000	-30	+/-1000	cps
ITCR2	3128	3200	-72	+/-250	cps
Sigma Mode					
Stabilization					
Result	Logged	Expected Value	Diff.	Tol.	Units
GENV	86.00	80.00	6.00	+/-15.00	V
FCAP	10019	10000	19	+/-500	cps
Horizontal Water Tank					
Result	Logged	Expected Value	Diff.	Tol.	Units
N/F Normalizer	0.98	0.95	0.03		
N/F Inel Norm	0.64	0.61	0.03		
RNF	1.02	1.07	-0.05	+/-0.12	
RINC	1.57	1.64	-0.07	+/-0.18	
SGFN	24.14	24.00	0.13	+/-0.50	cu
SGFF	22.92	22.85	0.07	+/-0.50	cu
FSIN	24190	24000	190	+/-2000	cps
FCAP	10200	10000	200	+/-1000	cps
NFTR	0.83			<5.00	
FFTR	0.94			<5.00	
NBKG	219			<500	cps
FBKG	103			<500	cps

FBKG	103				<500	cps
RTN	0.40	0.40	-0.00	+/-0.10		usec
RTF	0.43	0.40	0.03	+/-0.10		usec
Calibration Software Modules						
HRMTI Module	2015.5.4.0					
RMTI Module	2015.10.16.1					
Log Data Acquisition Software Modules						
HRMTI Module	2015.5.4.0					
RMTI Module	2015.10.16.1					
Gamma Ray Calibration Report						
Type / Serial:		002 / 11224502				
SHOP CALIBRATION		Mon Feb 27 11:33:38 2017				
	Counts/Sec.	Gain	Offset	Jig	Units	
Background	29.0				cps	
Calibrator	296.5				cps	
		1.3758			GAPI/cps	
PRIMARY VERIFICATION						
Background	39.1				cps	
Calibrator	412.9				cps	
Difference				373.7	GAPI	
BEFORE SURVEY VERIFICATION						
Background	0.0				cps	
Calibrator	0.0				cps	
Difference				0.0	GAPI	
AFTER SURVEY VERIFICATION						
Background	0.0				cps	
Calibrator	0.0				cps	
Difference				0.0	GAPI	

Sensor	Offset (ft)	Schematic	Description	Length (ft)	O.D. (in)	Weight (lb)
CCL	35.86		STNDCH-STND_CH 1.4375 IN CABLE HEAD	1.50	1.44	1.00
			TTTCU-002 (11224502) Through Tubing Telemetry Cartridge - Ultrawire	7.65	1.69	37.00
GR	33.60		XHU-003 (11899561) Crossover Halliburton 1553 to Ultrawire	1.58	1.69	7.00
RmtTFGT	22.95					
RmtTNCT	22.45					

RmtTNGT	22.43		RMTI-A (11917905) Halliburton RMTI Tool	14.00	2.13	77.00
RmtFP5V	14.70					
RmtNFwvMcsP	14.70		X-OVER-SondexxGo Sondex Box x Go Pin Cross Over	0.31	1.69	1.00
RmtCommFWa	14.70		CENT-CASTM-CENT CAST M INLINE CENTRALIZER	2.16	3.13	25.00
Temp	9.57					
TT3FT	7.32		HCBLM-A (12091454) Halliburton HCBLM Tool	9.38	2.75	116.00
AMP3FT	7.32					
WVF5FT	6.36					
WVF3FT	2.84		CENT-CASTM-CENT CAST M INLINE CENTRALIZER	2.16	3.13	25.00
LLMTEN	0.00		AUH-001 (11703517) Adaptor Ultrawire/Halliburton	0.38	1.69	3.00
			BUL-001 (000001) Bullnose	0.30	1.69	1.50
Dataset: b&v 14a-07-07-95.db: WC/B&V_14A-07-07-95/run1/MAIN Total length: 39.43 ft Total weight: 293.50 lb O.D.: 3.13 in						

Company	URSA OPERATING COMPANY				
Well	B&V 14A-07-07-95				
Field	WILDCAT				
County	Garfield	State	CO		
HALLIBURTON	CEMENT BOND LOG GR-CCL				