

HALLIBURTON

RESERVOIR
MONITORING
TOOL - ELITE

Company				URSA OPERATING COMPANY			
Well				B&V 23C-07-07-95			
Field				WILDCAT			
County				GARFIELD		State CO	
Company				URSA OPERATING COMPANY			
Well				B&V 23C-07-07-95			
Field				WILDCAT			
County				GARFIELD		State CO	
API No.: 05045227070000				Serv #: 903923007		Other Services	
Location: SHL: 1952' FSL & 577 FWL							
BHL: 1733' FSL & 1900 FWL							
Sec: 7				Twp: 7S		Rge: 95W	
Permanent Datum				Elevation 5084'		Elevation	
Log Measured From KB				, 17 Ft. above perm. datum		K.B. 5101'	
Drilling Measured From KB						D.F. 5101'	
						G.L. 5084'	
Date @ Time Logged 3/26/2017 @ 03:00				Type Fluid in Hole		FRESH WATER	
Run No. ONE				Density of Fluid		8.4#	
Depth - Driller 6358'				Fluid Level		SURFACE	
Depth - Logger 6414'				Cement Top Est. Logged		1786'	
Bottom - Logged Interval 6381'				Equipment / Location		11703208 / BRIGHTON	
Top - Log Interval 2786'				Recorded by		J.SCHMIDT	
Max. Recorded Temp. 198 F				Witnessed by		L. GEIGER	
CEMENTING DATA				Surface		Protection	
				String		Production	
				String		String	
Date / Time Cemented							
Primary / Squeeze							
Expected Compressive Strength				psi@ hrs		psi@ hrs	
Cement Volume				psi@ hrs		psi@ hrs	
Cement Type / Weight				/		/	
Formulation							
Mud Type / Mud Wgt.				/		/	
Borehole Record				Casing & Tubing Record			
Run Number		Bit	From	To	Size	Weight	From

ONE	TD	SURFACE CSG	14.7 PSI	20			
	GAMMA		CBL		RMTI		
Pass	Scale		Scale		Scale		Scale
No.	L	R	L	R	L	R	L L
ONE	0	150	0	100	60	0	
DIRECTIONAL INFORMATION							
Maximum Deviation			deg. @		KOP		

HALLIBURTON

MAIN PASS

5" = 100'

Database Filef:\ursa\b&v 23c-07-07-95\23c.db

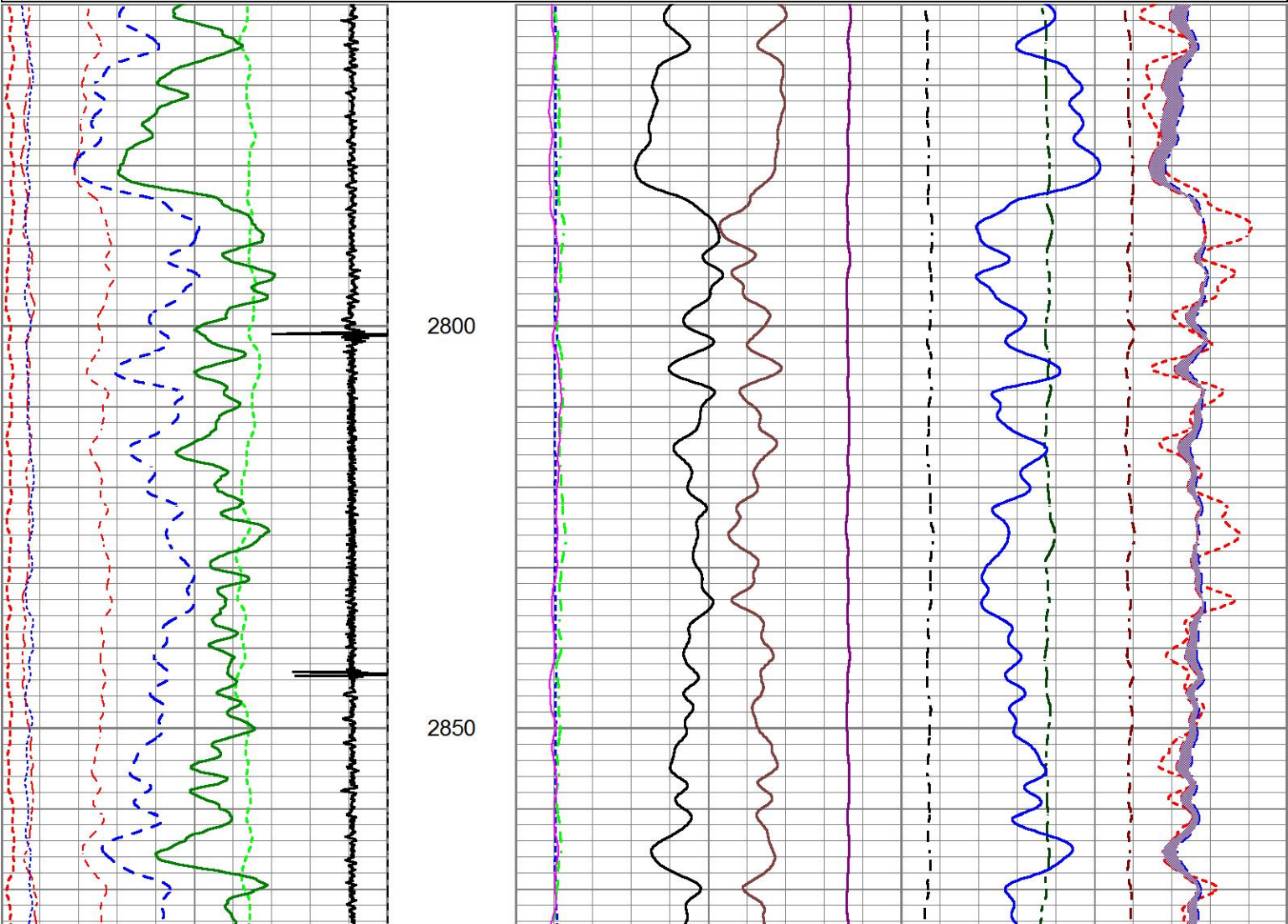
Dataset PathnameMAIN

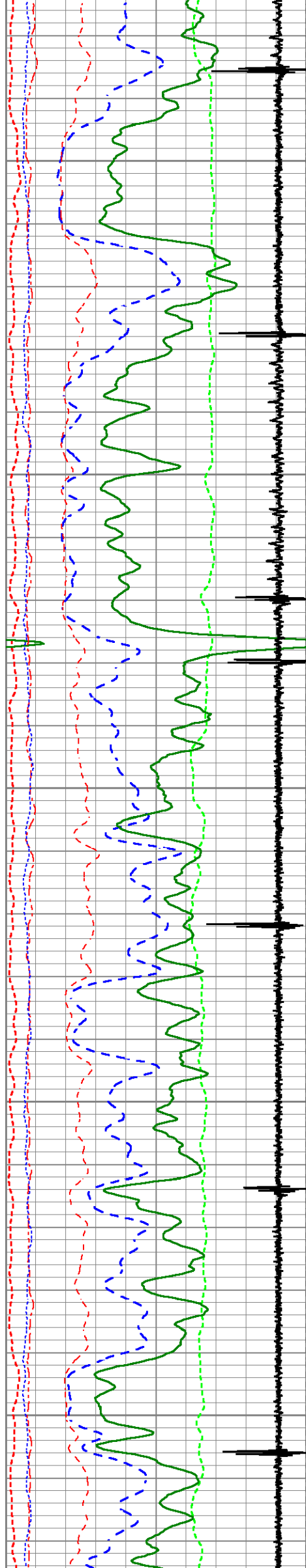
Presentation FormatIRMTE_~1

Dataset CreationSun Mar 26 04:10:20 2017

Charted byDepth in Feet scaled 1:240

200	Near Bore Si (SGBN)	0	TENSION	0	RATIO (RNF)		1
0	OAI	100	0 (lb 1800	60	SGIN		0
10	FAR FIT ERR (SGFF)	40		0	RIN	9	60000 Near Counts (NCAP)
0	GR (GAPI)	150		0	RICF	6	60000 Far Counts (FCAP)
0	NEAR FIT ERR (SGFN)	100		0	H YIELD (YH2)	1	100000 FAR INTEL CT (FSIN)
-3500	CCL	350		0	H YIELD (YH1)	1	10000(NEAR INTEL CT (NSIN)
0	IN FIT ERR (CFTR1) NEAR	1		0.9	PHIT ()	-0.1	ET INL NEAR (NNII
0	IN FIT ERR CFTR2) FAR	1			INOX2		50000 -1000
					-1500	1500	





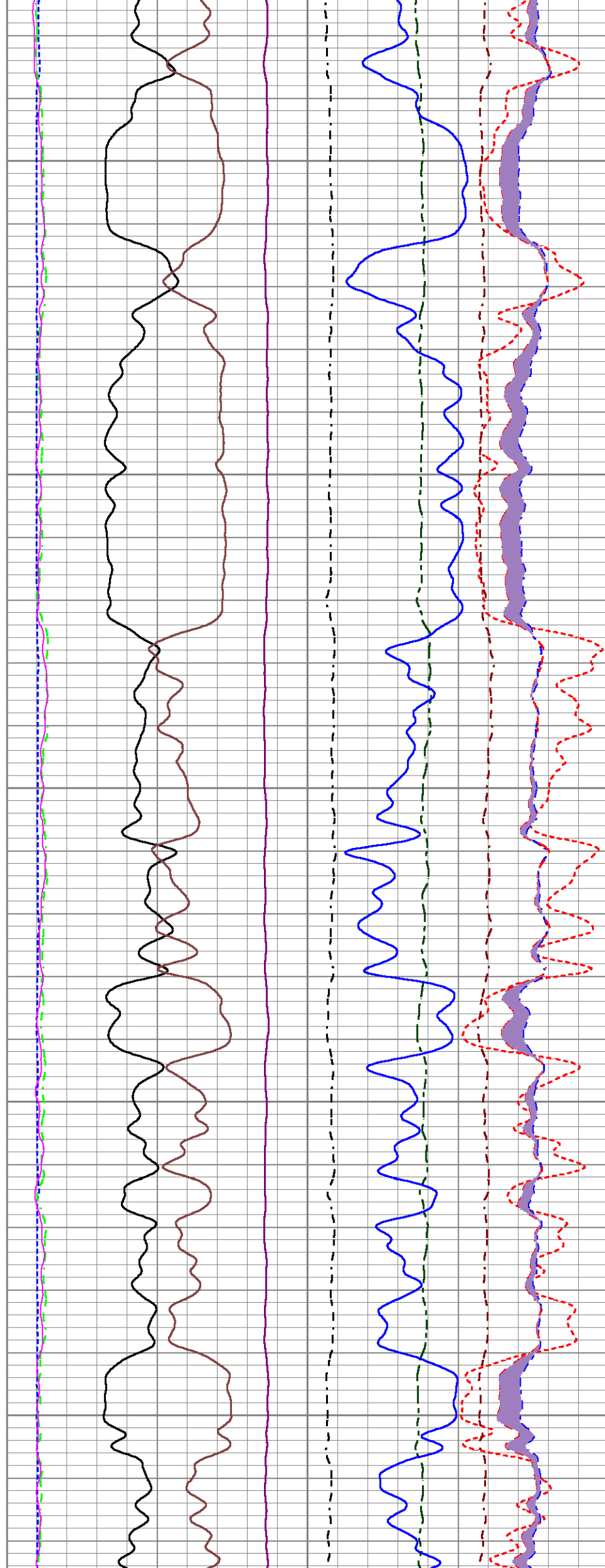
2900

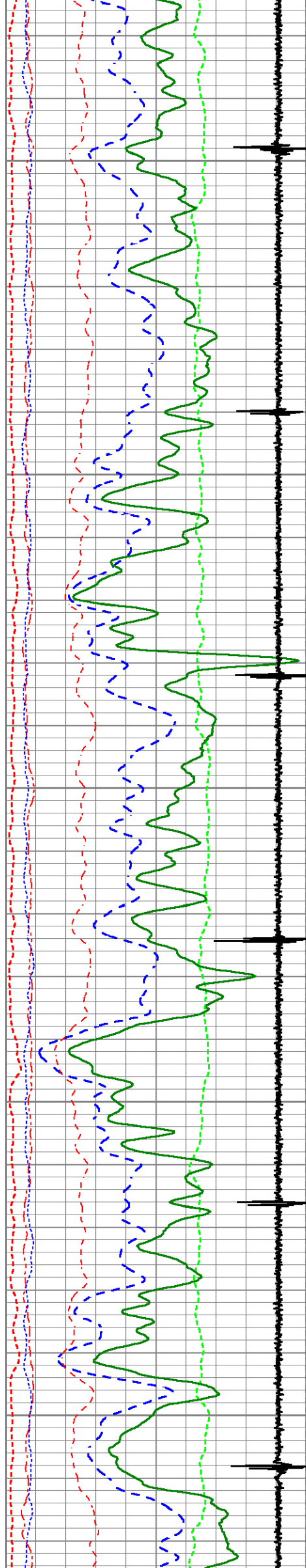
2950

3000

3050

3100





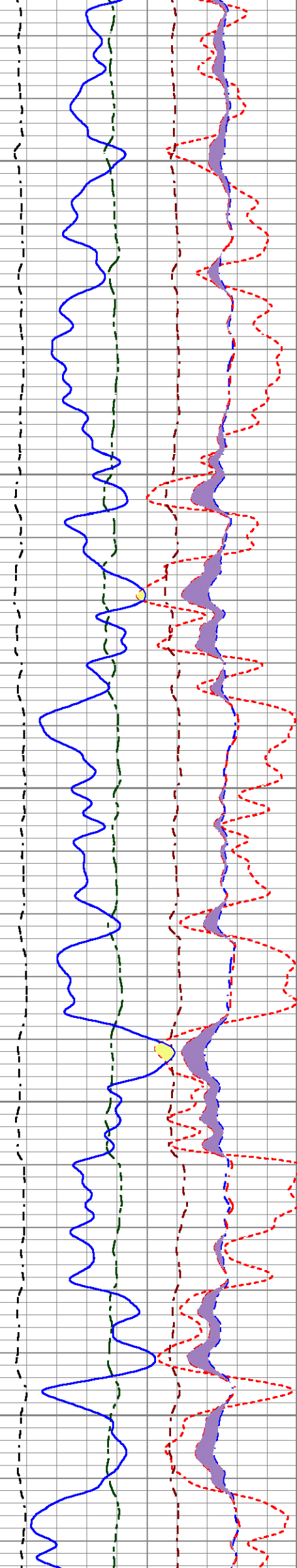
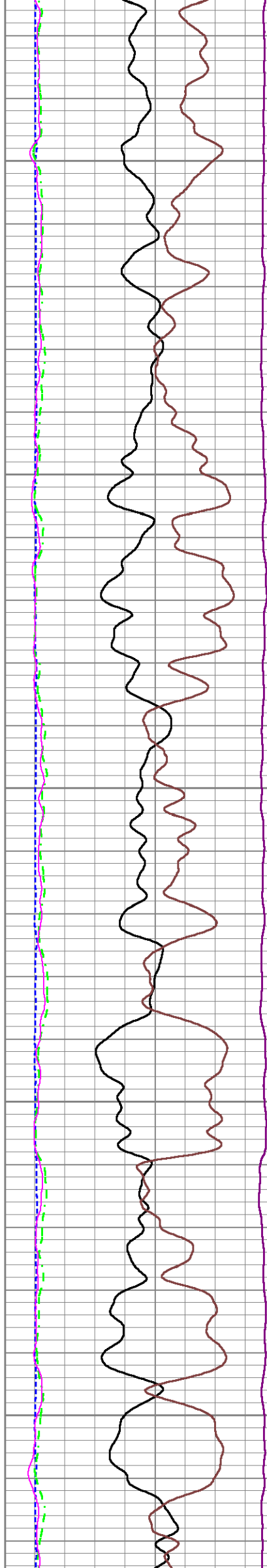
3150

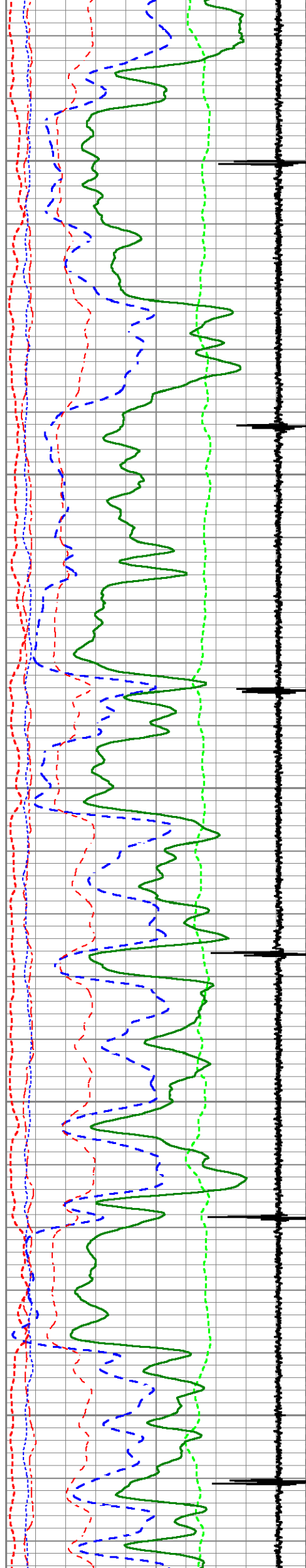
3200

3250

3300

3350





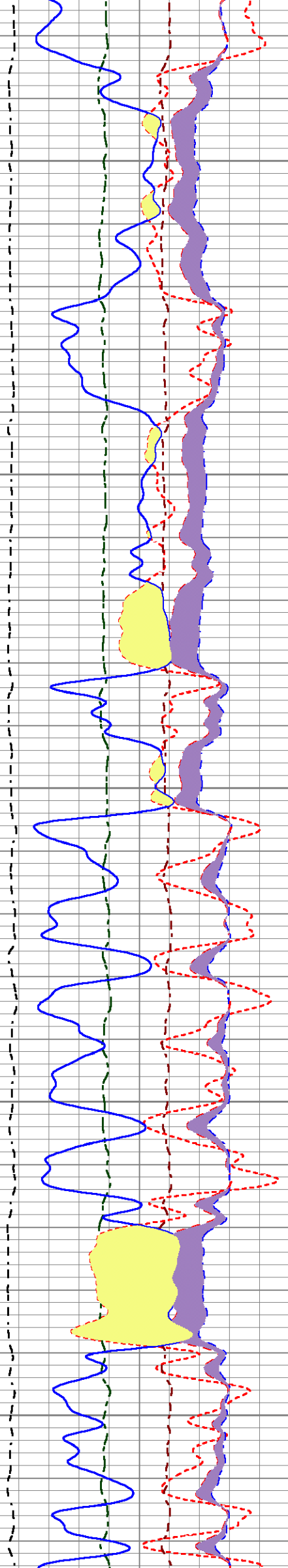
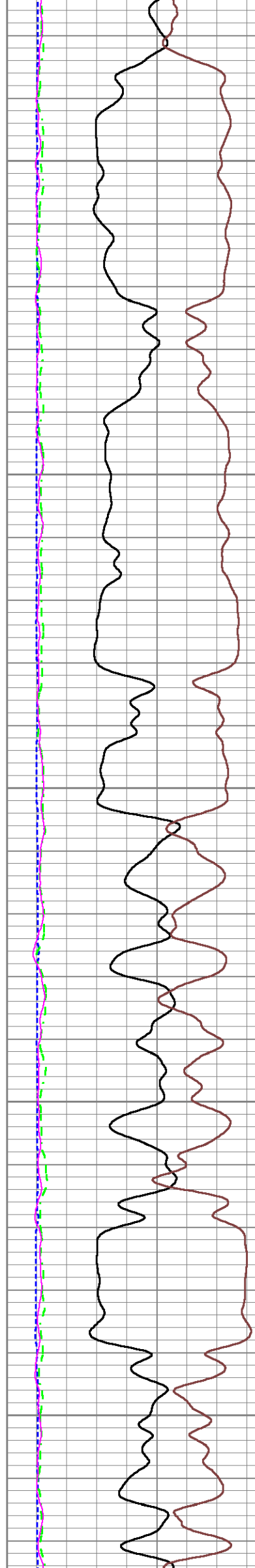
3400

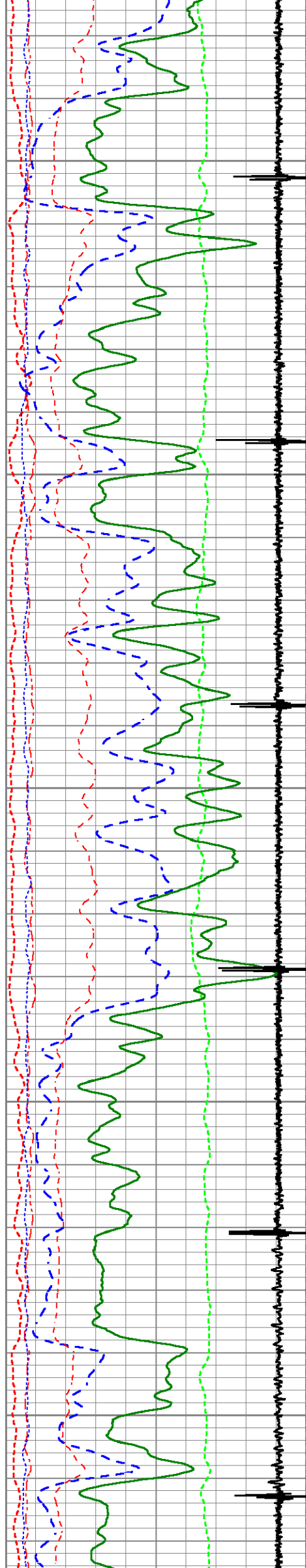
3450

3500

3550

3600





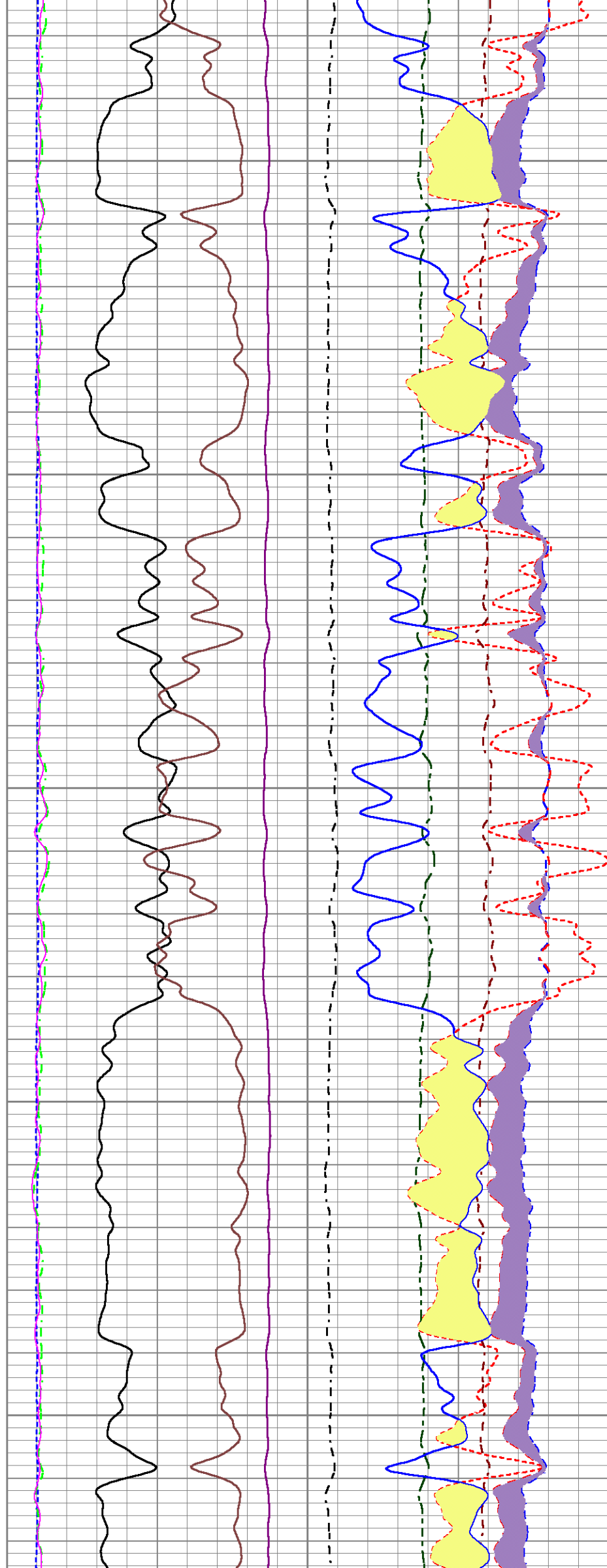
3650

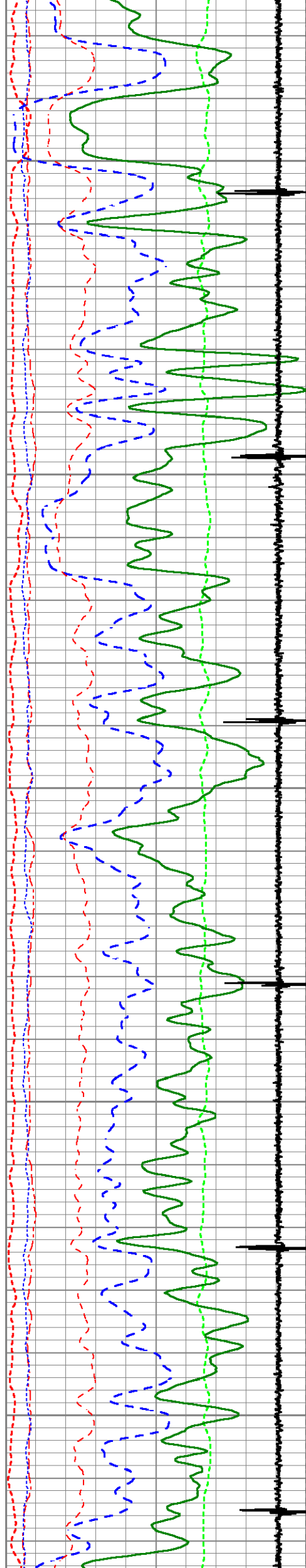
3700

3750

3800

3850





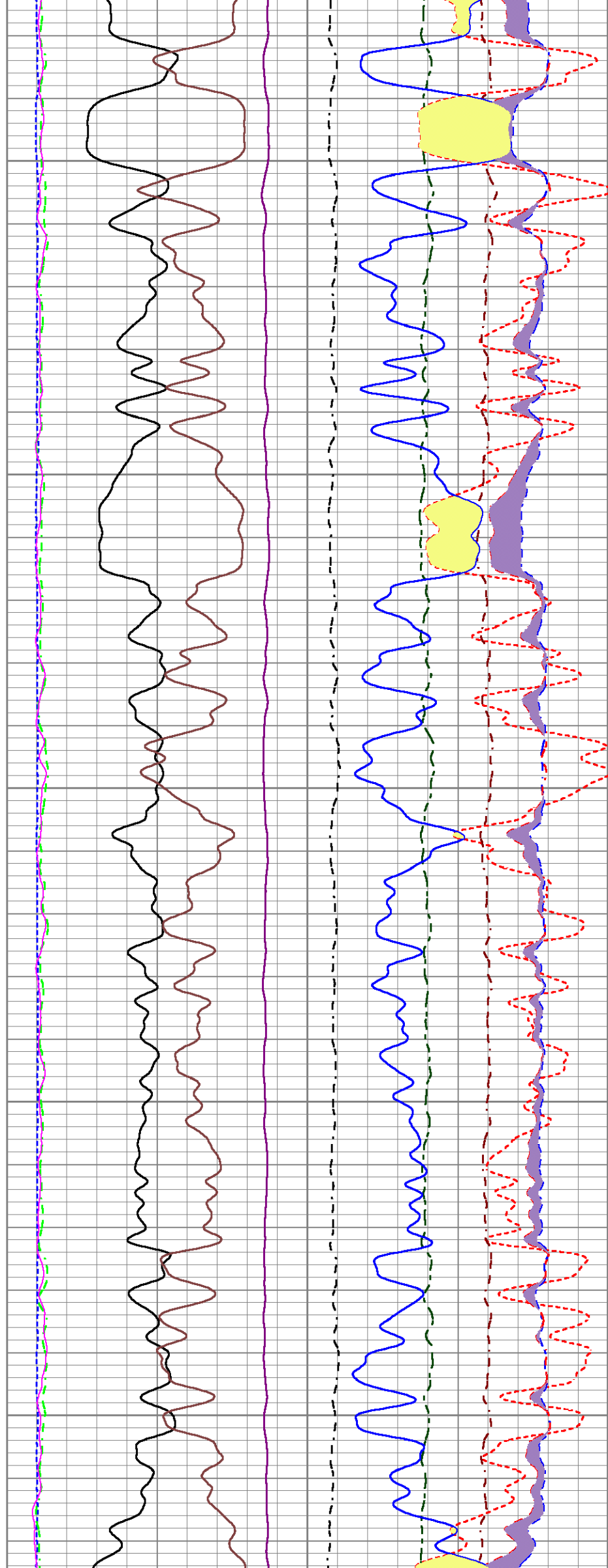
3900

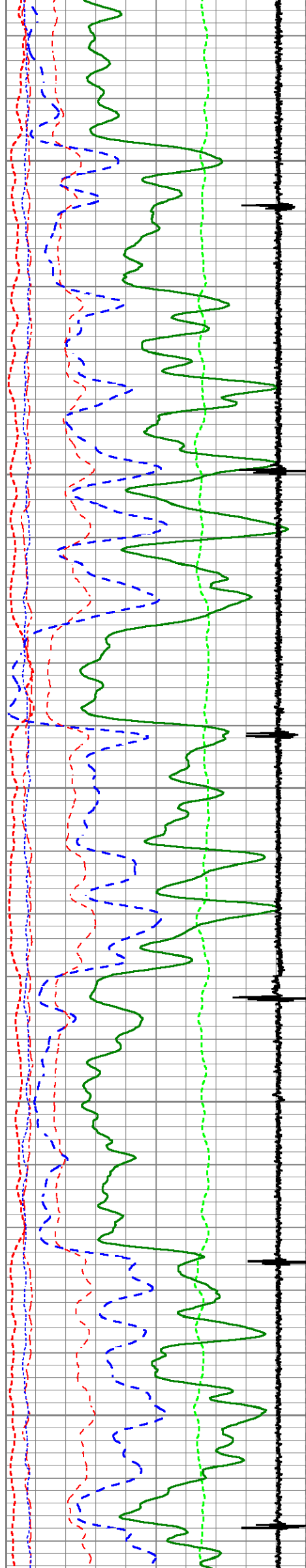
3950

4000

4050

4100





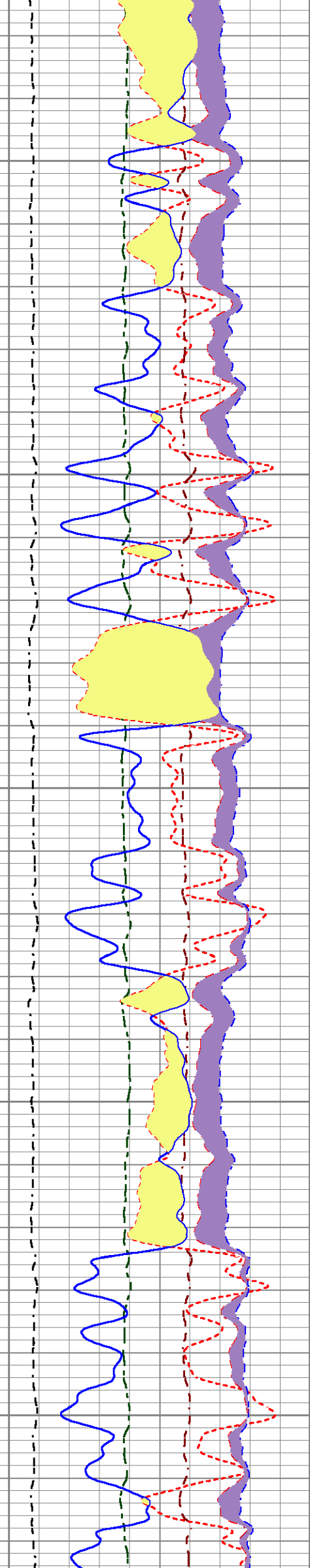
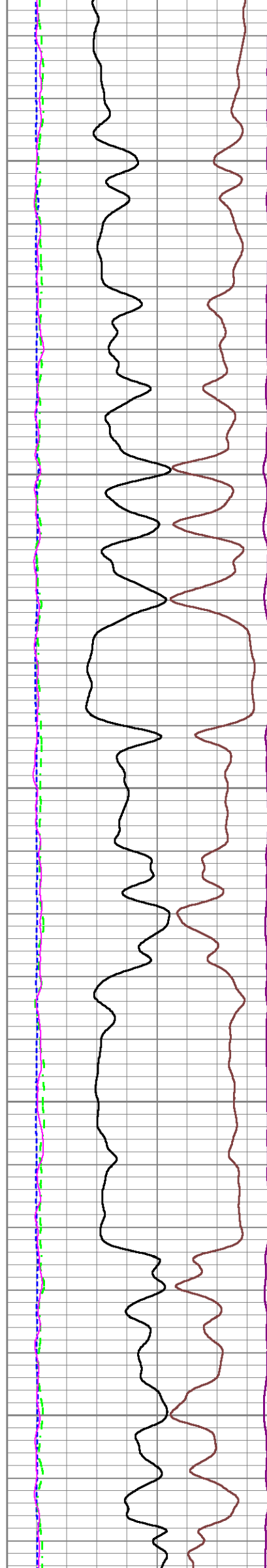
4150

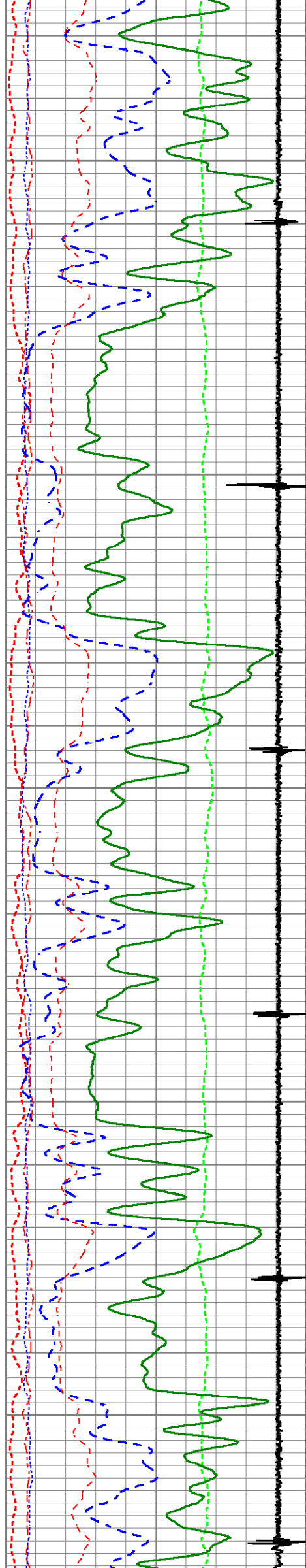
4200

4250

4300

4350





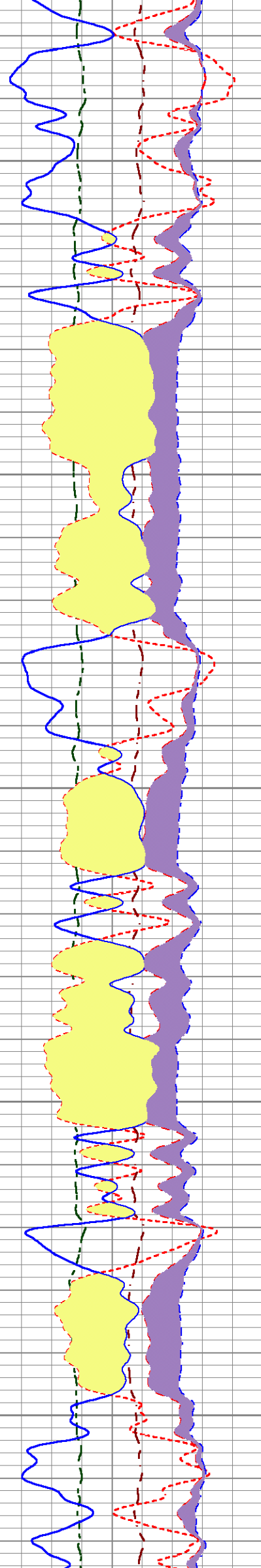
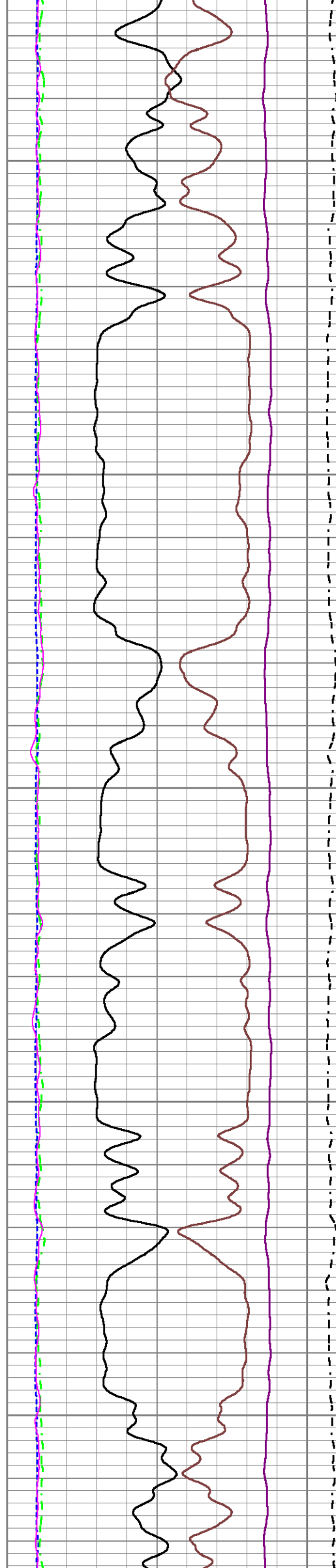
4400

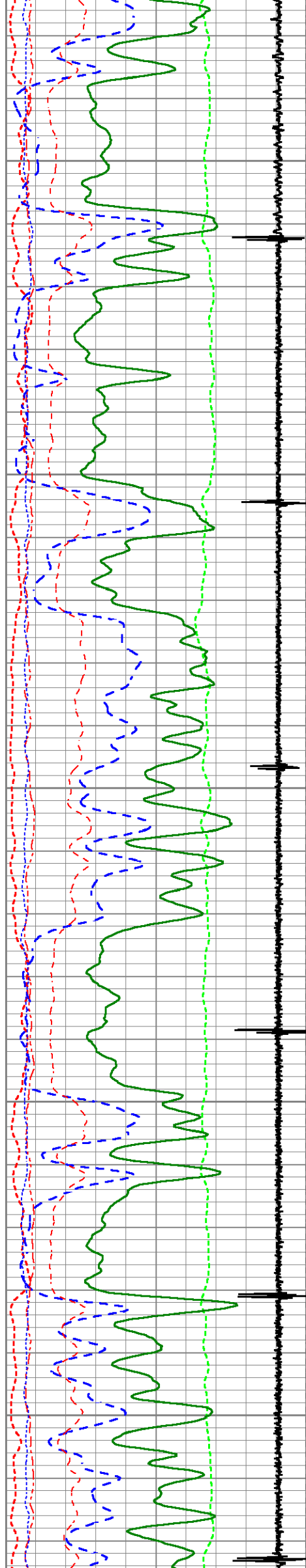
4450

4500

4550

4600





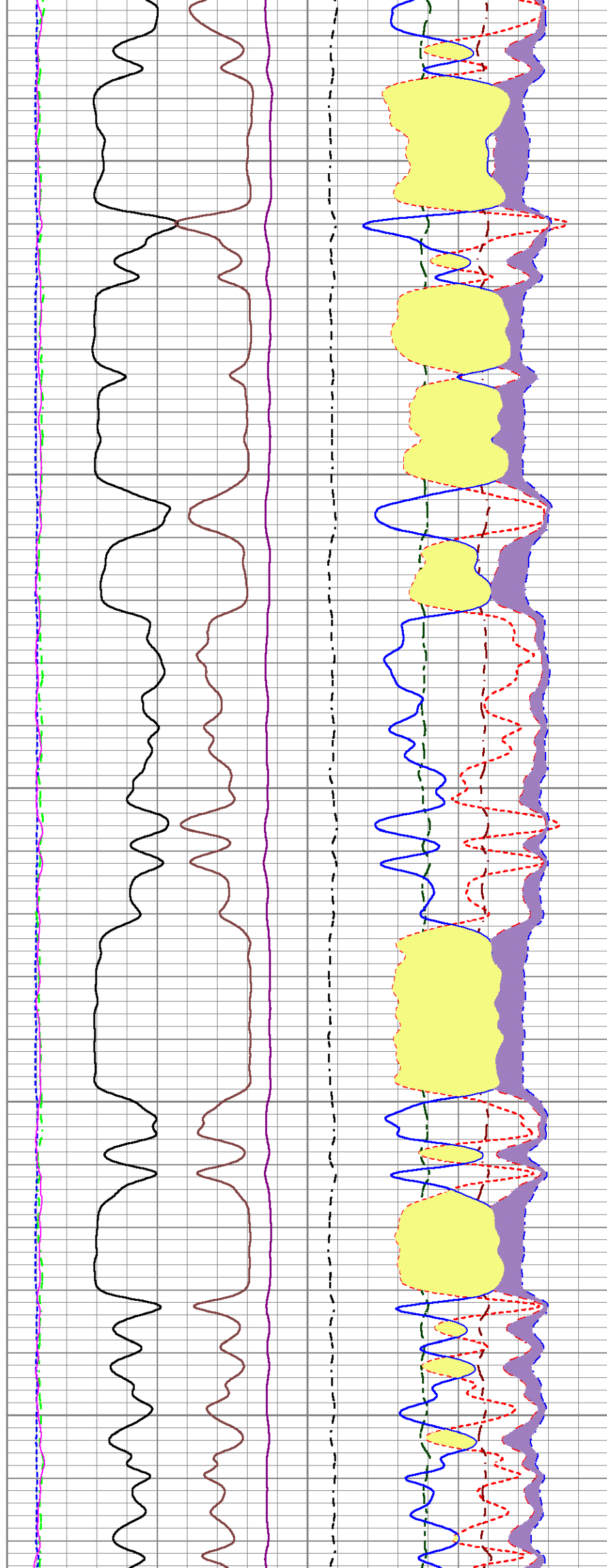
4650

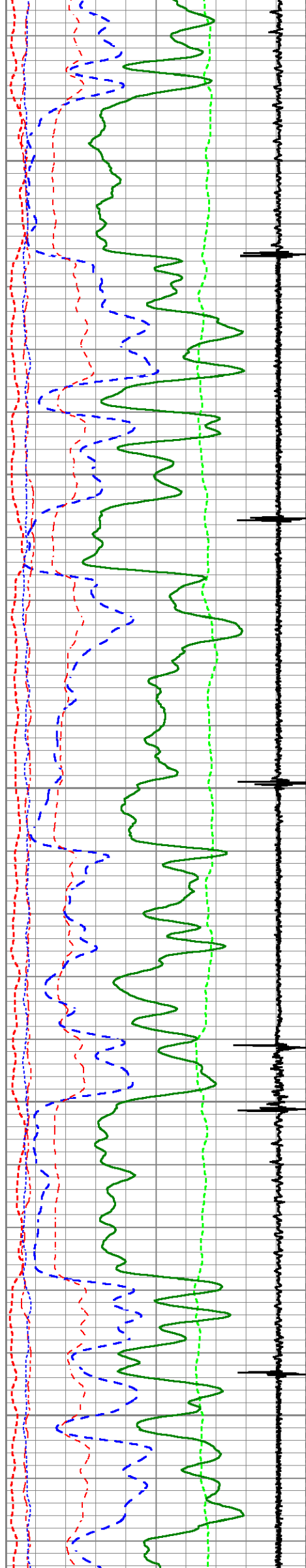
4700

4750

4800

4850





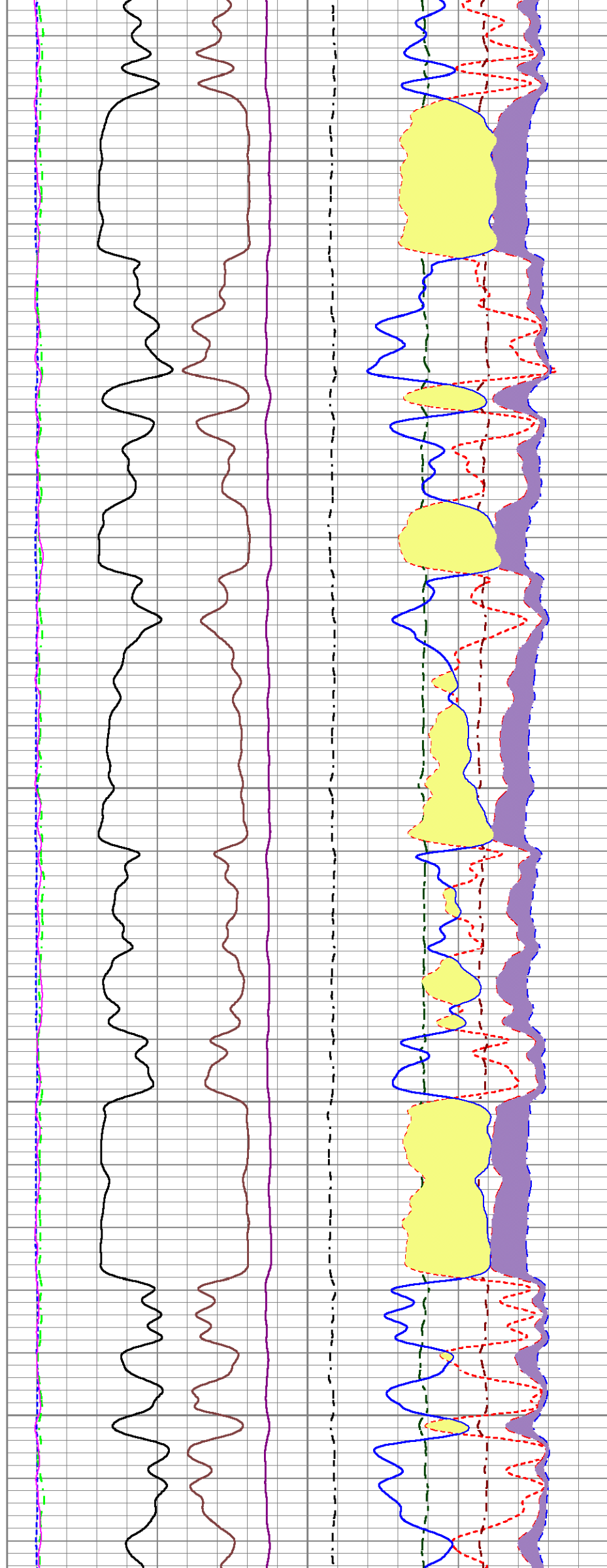
4900

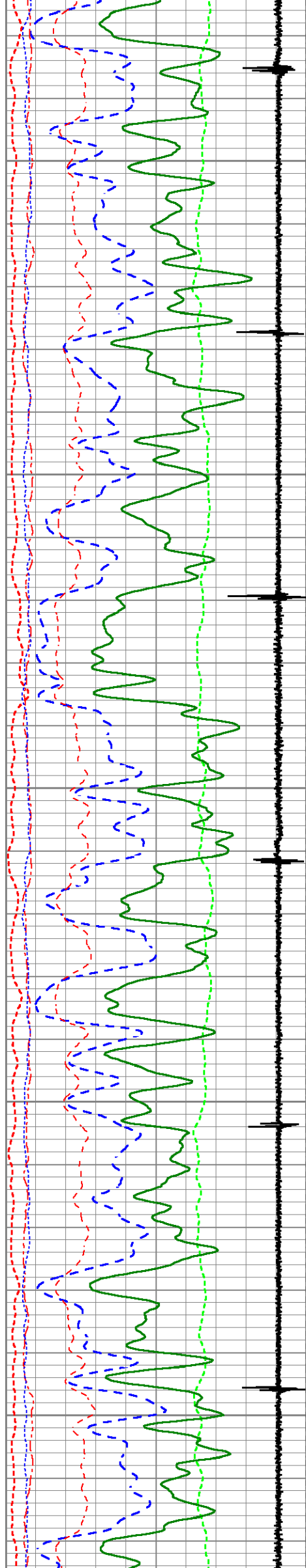
4950

5000

5050

5100





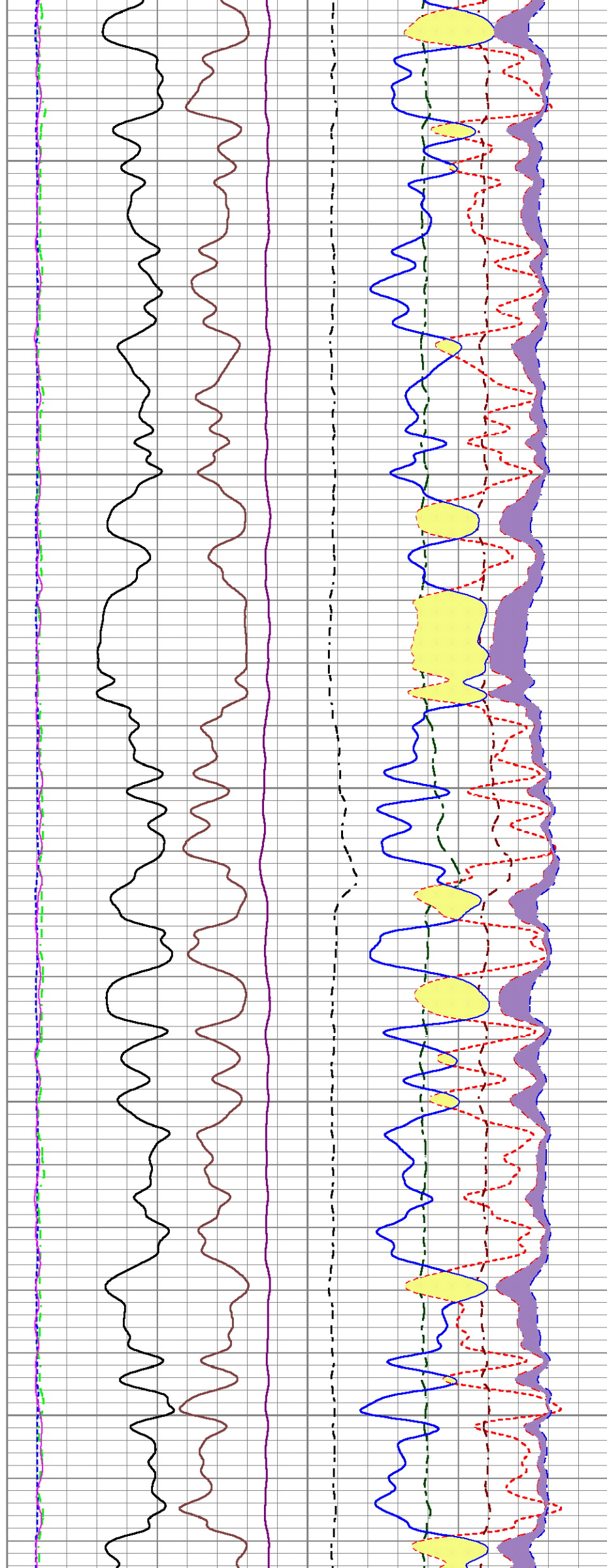
5150

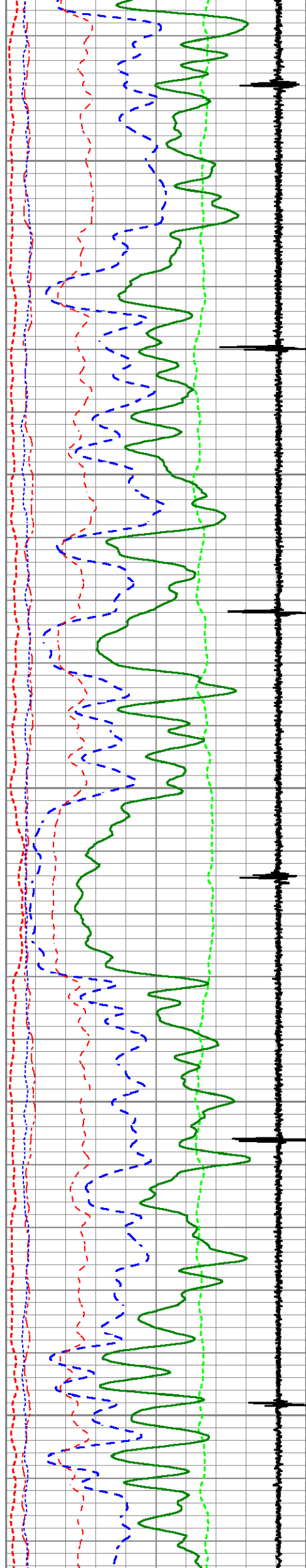
5200

5250

5300

5350





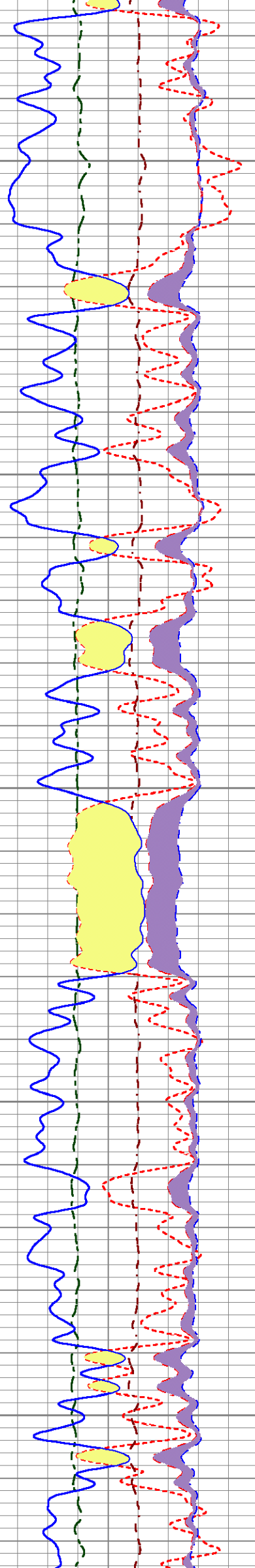
5400

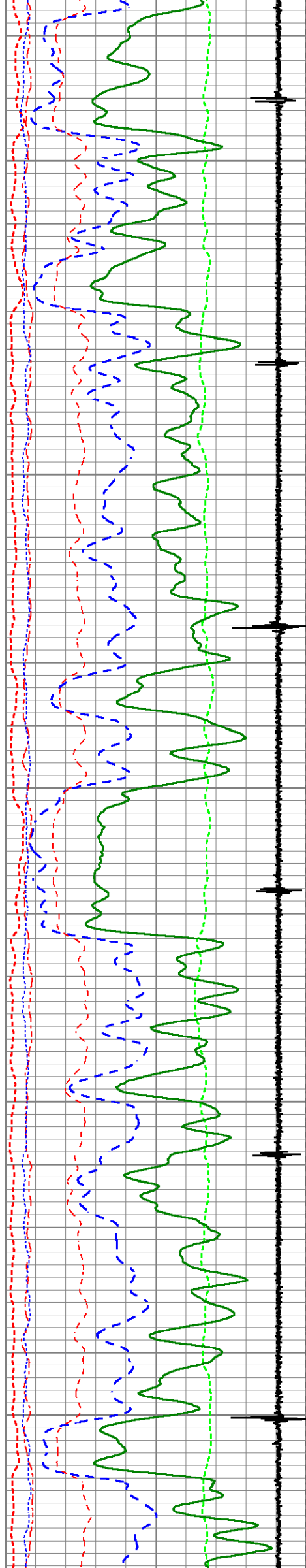
5450

5500

5550

5600





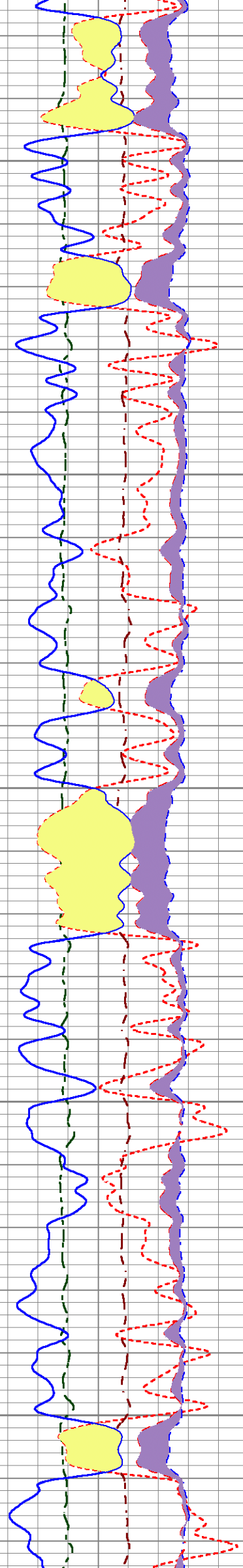
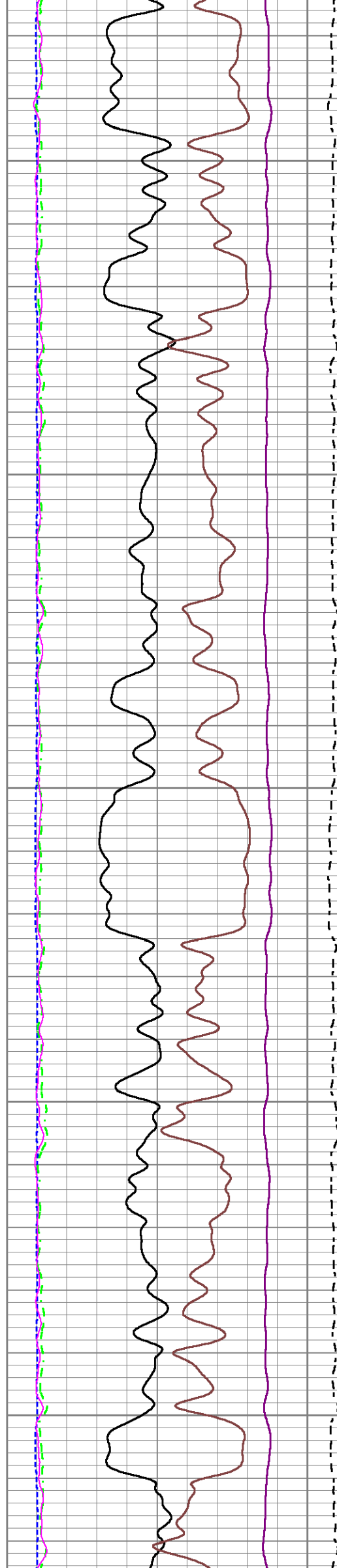
5650

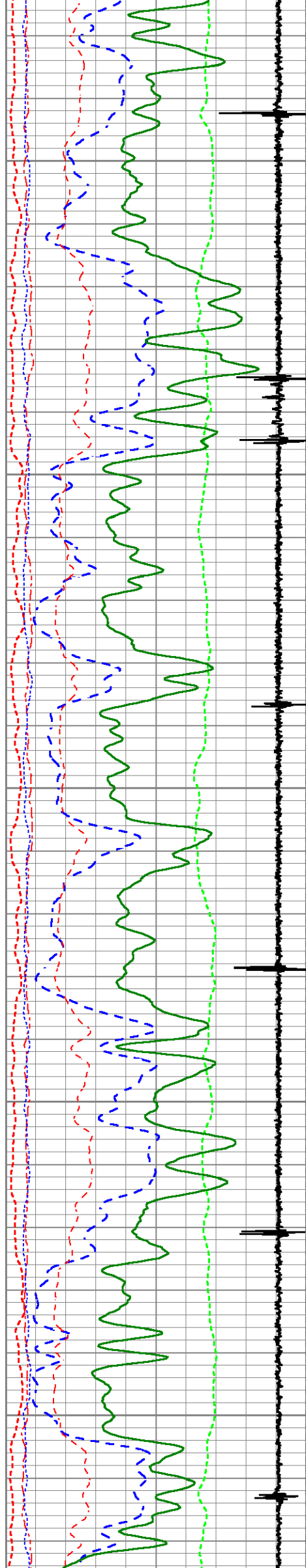
5700

5750

5800

5850





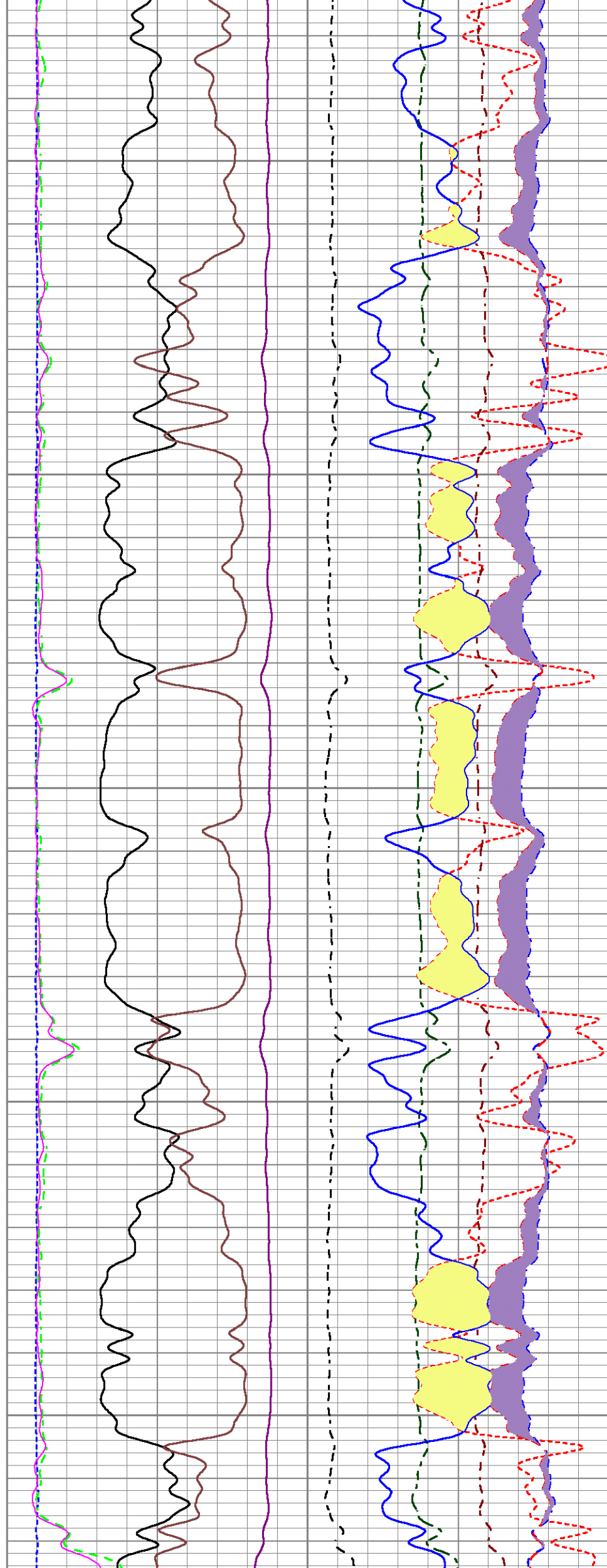
5900

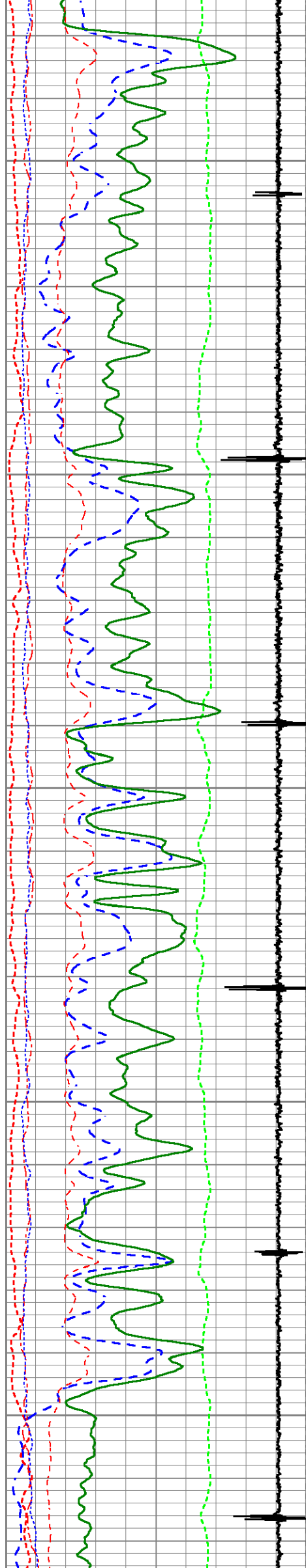
5950

6000

6050

6100





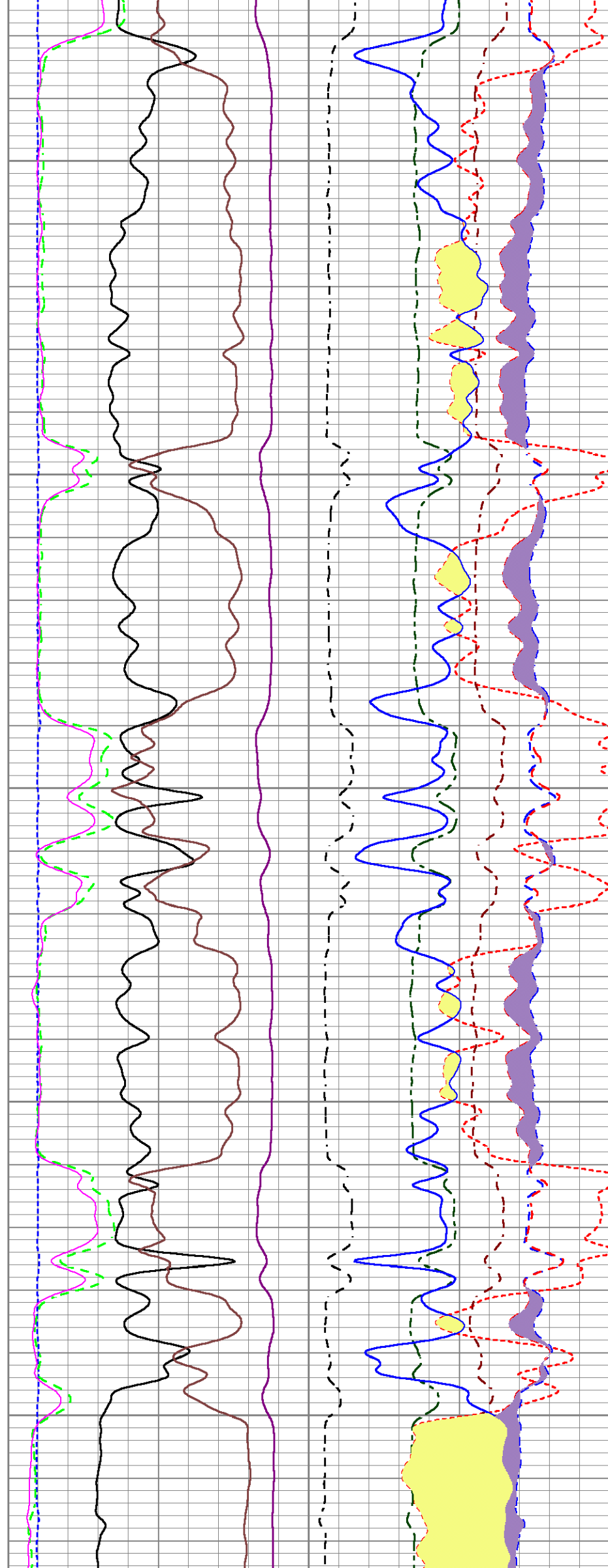
6150

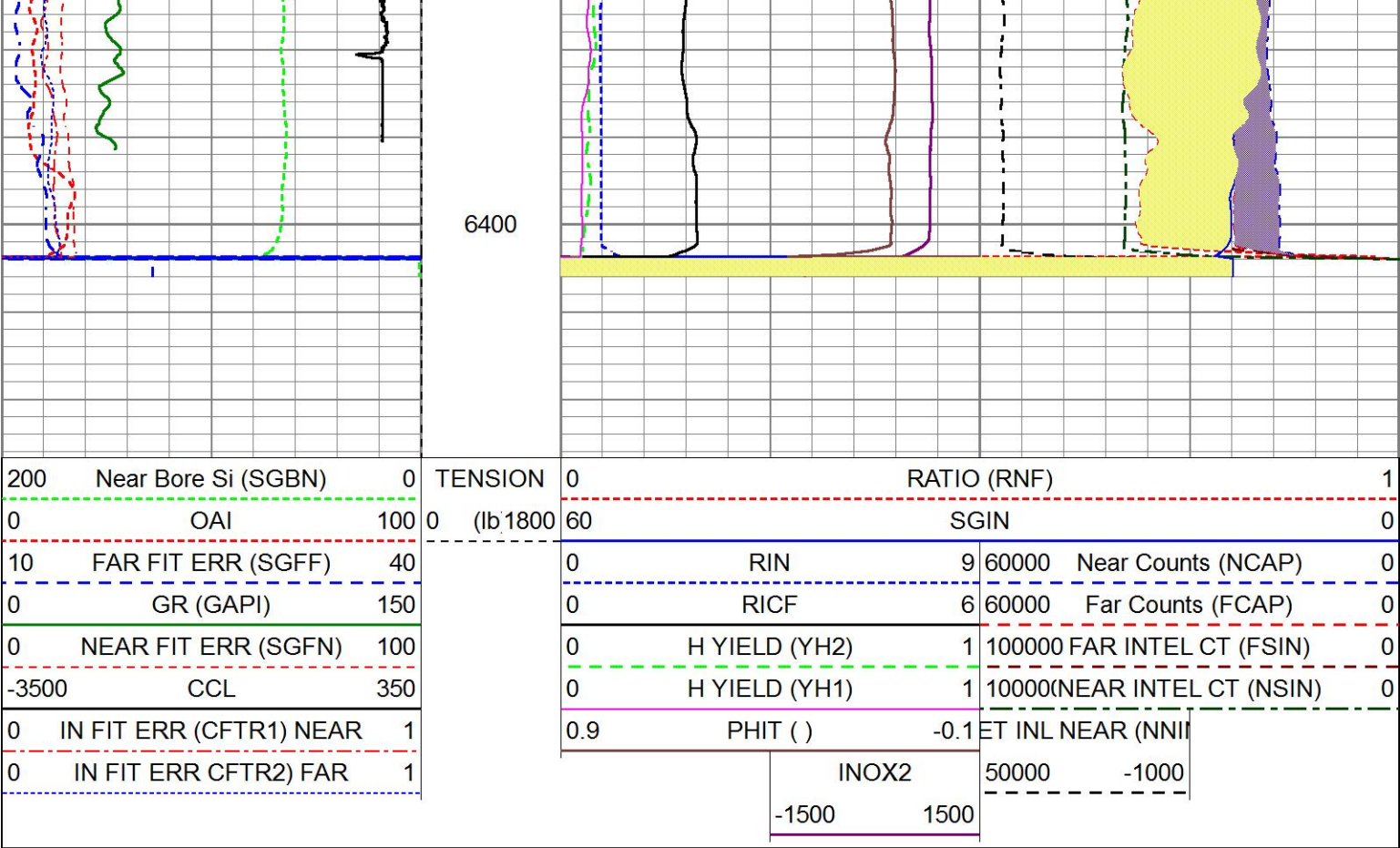
6200

6250

6300

6350

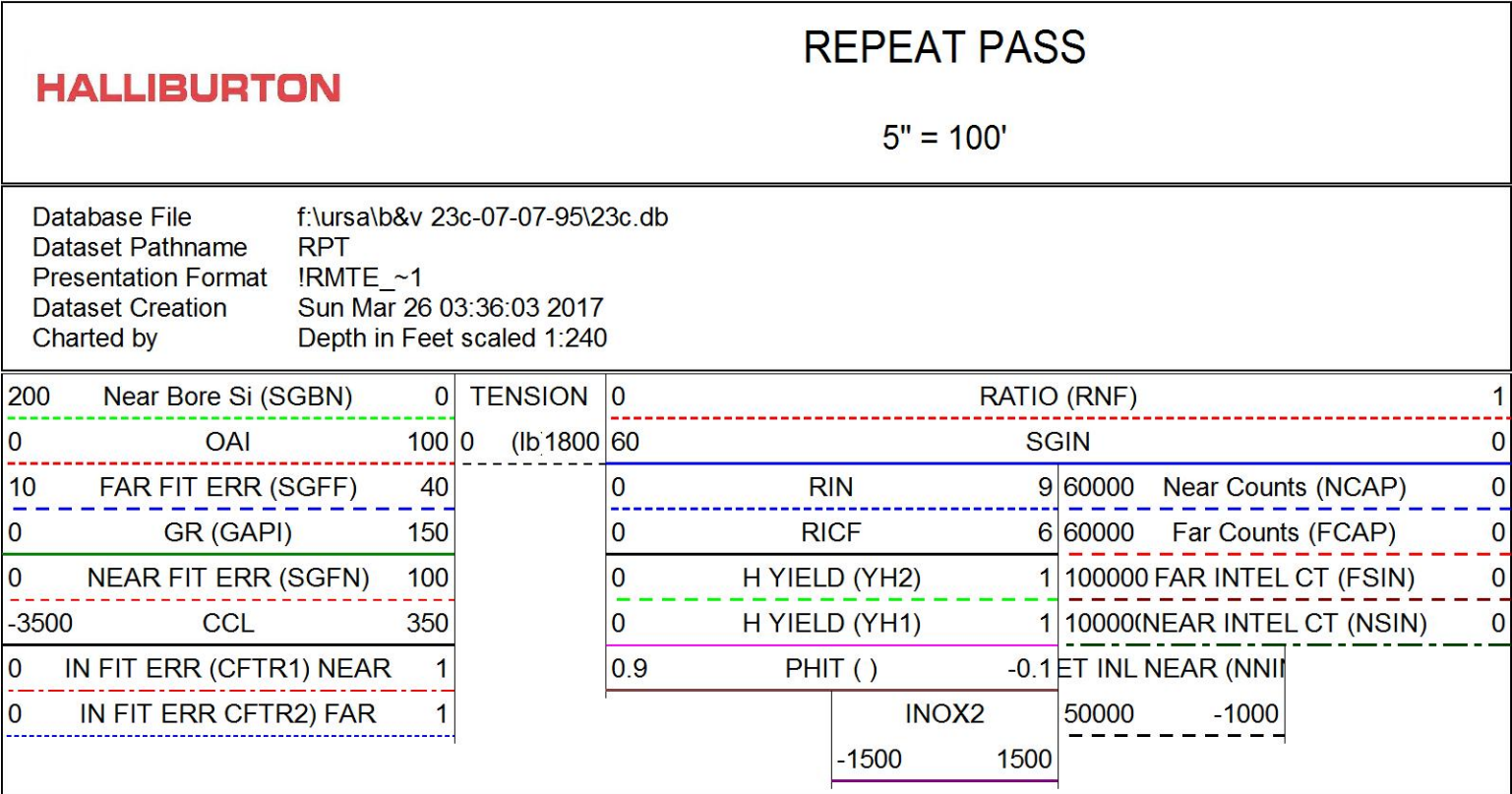




MAIN PASS

5" = 100'

HALLIBURTON

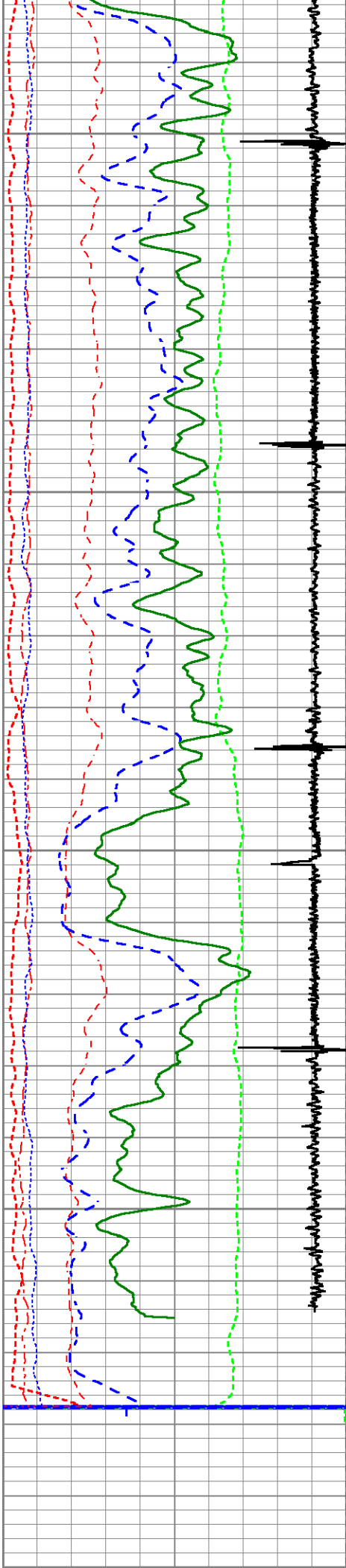


REPEAT PASS

5" = 100'

HALLIBURTON

Database File f:\ursa\b&v 23c-07-07-95\23c.db
Dataset Pathname RPT
Presentation Format !RMTE_~1
Dataset Creation Sun Mar 26 03:36:03 2017
Charted by Depth in Feet scaled 1:240



200	Near Bore Si (SGBN)	0
0	OAI	100
10	FAR FIT ERR (SGFF)	40
0	GR (GAPI)	150
0	NEAR FIT ERR (SGFN)	100
-3500	CCL	350
0	IN FIT ERR (GCTR1) NEAR	1

2800

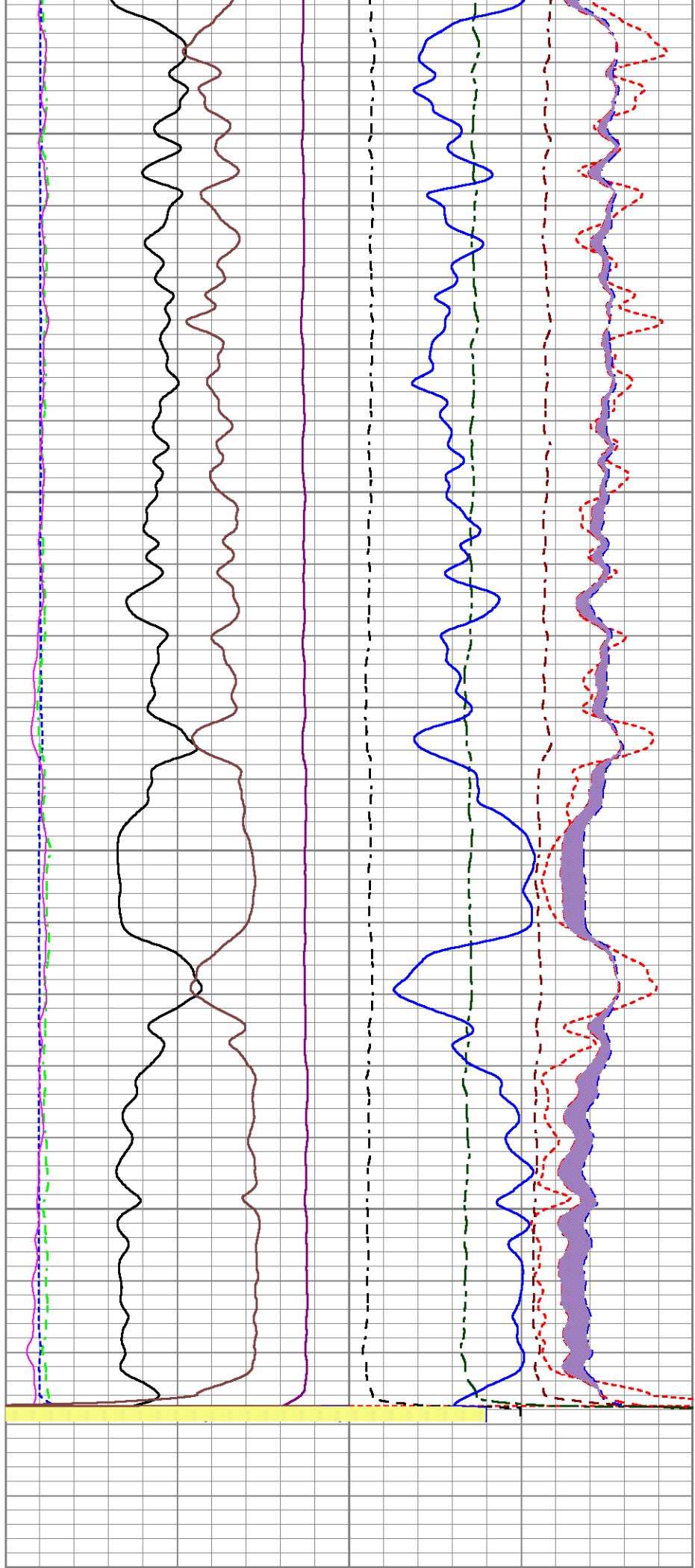
2850

2900

2950

3000

TENSION
(lb/1800)



0	RATIO (RNF)				1
60	SGIN				0
0	RIN	9	60000	Near Counts (NCAP)	0
0	RICF	6	60000	Far Counts (FCAP)	0
0	H YIELD (YH2)	1	100000	FAR INTEL CT (FSIN)	0
0	H YIELD (YH1)	1	10000	(NEAR INTEL CT (NSIN)	0
0.0	PLUT (%)	0.1	CT INL NEAR (NIN)		

IN FIT ERR (CFTR1) NEAR		1	PHIT ()		-0.1	ET INL NEAR (NNI	
0	IN FIT ERR CFTR2) FAR	1	INOX2		50000	-1000	
			-1500		1500		

HALLIBURTON

REPEAT PASS

5" = 100'

Log Variables

Database:f:\ursa\b&v 23c-07-07-95\23c.db

Dataset field/well/run1/MAIN/_vars_

Top - Bottom



BHSAL1	BHSAL2	BHTEMP_Src	BITSIZE in	BORSAL kppm	BOTTEMP degF	CASED?	CASEOD in
1	0	TEMP	7.875	150	100	Yes	5.5
CASETHCK in	CASEWGHT lb/ft	LIRISHFTF	LIRISHFTN	LTH	MAXAMPL mV	MINAMPL mV	MINATTN db/ft
0	11.6	0	0	Sandstone	82	1	0.8
MSGGN	MudWgt lb/gal	PERFS	POROS1	POROS2	PPT usec	RHOCF	SO in
1	9.5	0	1	0	0	0.25	0
SRFTEMP degF	TDEPTH ft	UHSGC	USERFTT usec/ft	ZREF MRayl			
0	0	NONE	0	1.7			

Calibration Report		
Database File	f:\ursa\b&v 23c-07-07-95\23c.db	
Dataset Pathname	MAIN	
Dataset Creation	Sun Mar 26 04:10:20 2017	
Cement Bond Log Shop Calibration Report		
Serial-Model:	11836468-A	
Calibration Performed:	Sat Mar 25 21:14:04 2017	
Free Pipe Calibration		
TT	Measured	Units
	245.9	usec
Amplitude	408.4	mV
Log Base Line	17.6	mV
Calibration References and Gain		
Name	Value	Units
Pipe O.D.	4.500	in
Pipe Weight	11.6	lb/ft
Pipe Ref. Amp.	82.0	mV
Amp. Gain	0.207	

Gamma Ray Calibration Report						
Type / Serial:		002 / 12159411				
SHOP CALIBRATION			Mon Feb 20 15:54:04 2017			
	Counts/Sec.	Gain	Offset	Jig	Units	
Background	27.6				cps	
Calibrator	317.4				cps	
		1.4042			GAPI/one	

PRIMARY VERIFICATION				
Background	0.0			cps
Calibrator	0.0			cps
Difference		0.0		GAPI
BEFORE SURVEY VERIFICATION				
Background	0.0			cps
Calibrator	0.0			cps
Difference		0.0		GAPI
AFTER SURVEY VERIFICATION				
Background	0.0			cps
Calibrator	0.0			cps
Difference		0.0		GAPI

Sensor	Offset (ft)	Schematic	Description	Length (ft)	O.D. (in)	Weight (lb)	
CCL	35.86		STNDCH-STND_CH 1.4375 IN CABLE HEAD	1.50	1.44	1.00	
GR	33.60		TTTCU-002 (12159411) Through Tubing Telemetry Cartridge - Ultrawire	7.65	1.69	37.00	
			XHU-003 (000001) Crossover Halliburton 1553 to Ultrawire	1.58	1.69	7.00	
RmtTFGT	22.95		RMTI-A (12376244) Halliburton RMTI Tool	14.00	2.13	77.00	
RmtTNGT	22.45						
RmtFP5V	14.70		X-OVER-SondexxGo Sondex Box x Go Pin Cross Over	0.31	1.69	1.00	
			CENT-CASTM-CENT CAST M INLINE CENTRALIZER	2.16	3.13	25.00	
Temp	9.57						

TT3FT	7.32			HCBLM-A (11836468)	9.38	2.75	116.00
AMP3FT	7.32			Halliburton HCBLM Tool			
WVF5FT	6.36						
WVF3FT	2.84			CENT-CASTM-CENT	2.16	3.13	25.00
				CAST M INLINE CENTRALIZER			
				AUH-001 (11072111)	0.38	1.69	3.00
				Adaptor Ultrawire/Halliburton			
				BUL-001 (000001)	0.30	1.69	1.50
LLMTEN	0.00			Bullnose			
Dataset: 23c.db: field/well/run1/MAIN							
Total length: 39.43 ft							
Total weight: 293.50 lb							
O.D.: 3.13 in							

Company	URSA OPERATING COMPANY				
Well	B&V 23C-07-07-95				
Field	WILDCAT				
County	GARFIELD		State	CO	
HALLIBURTON	RESERVOIR MONITORING TOOL - ELITE				