

HALLIBURTON

CEMENT  
BOND LOG

Company

URSA OPERATING COMPANY

Well

B&V 33D-07-07-95

Field

WILDCAT

County

GARFIELD

State

CO

Company

URSA OPERATING COMPANY

Well

B&V 33D-07-07-95

Field

WILDCAT

County

GARFIELD

State

CO

API No.: 05045228460000

Serv #: 903920774

Other Services

Location: SHL: 1956' FSL & 618' FWL

BHL: 1590' FSL & 1991' FWL

JB  
GR  
RMTi

Permanent Datum

Elevation 5084'

Elevation

Log Measured From KB

17 Ft. above perm. datum

K.B. 5101'  
D.F. 5101'  
G.L. 5084'

Drilling Measured From KB

Date @ Time Logged 3/26/2017 @ 07:00

Type Fluid in Hole

FRESH WATER

Run No. ONE

Density of Fluid

8.4#

Depth - Driller 6369'

Fluid Level

SURFACE

Depth - Logger 6997'

Cement Top Est. Logged

1316'

Bottom - Logged Interval 6961'

Equipment / Location

11703208 / BRIGHTON

Top - Log Interval 1909'

Recorded by

J.SCHMIDT

Max. Recorded Temp. 198 F

Witnessed by

L. GEIGER

CEMENTING DATA

Surface String

Protection String

Production String

Liner

Date / Time Cemented

Primary / Squeeze

Expected Compressive Strength

psi@ hrs

psi@ hrs

psi@ hrs

psi@ hrs

Cement Volume

Cement Type / Weight

/

/

/

/

Formulation

Mud Type / Mud Wgt.

/

/

/

/

Run Number

Bit

From

To

Size

Weight

From

To

Borehole Record

Casing & Tubing Record

<<< Fold Here >>>

HALLIBURTON DOES NOT GUARANTEE THE ACCURACY OF ANY INTERPRETATION OF THE LOG DATA, CONVERSION OF LOG DATA TO PHYSICAL ROCK PARAMETERS OR RECOMMENDATIONS WHICH MAY BE GIVEN BY HALLIBURTON PERSONNEL OR WHICH APPEAR ON THE LOG OR IN ANY OTHER FORM. ANY USER OF SUCH DATA, INTERPRETATIONS, CONVERSIONS, OR RECOMMENDATIONS AGREES THAT HALLIBURTON IS NOT RESPONSIBLE EXCEPT WHERE DUE TO GROSS NEGLIGENCE OR WILLFUL MISCONDUCT, FOR ANY LOSS, DAMAGES, OR EXPENSES RESULTING FROM THE USE THEREOF.

Comments

TOOLS WERE RAN IN 4.5" 11.6# CASING.

RMT RAN IN SIGMA MODE WITH A GENERATOR VOLTAGE OF 86V.

\*\*THANK YOU FOR CHOOSING HALLIBURTON ENERGY SERVICES\*\*

Service Ticket No. 903920774

API No. 05045228460000

PGM Ver WARRIOR 8.0

The Well Name, Location, Borehole Description, and / or Cementing Data Furnished by Client

EQUIPMENT DATA

GAMMA

CBL

RMT

Run No. ONE

Run No. ONE

Run No. ONE

Run No.

Serial No. 12159411

Serial No. 11836468

Serial No. 12376244

Serial No.

Model No. TTTTCU-002

Model No. CBL-M

Model No. RMTi

Model No.

Diameter 1.69"

Diameter 2.75"

Diameter 2.75"

Diameter

LOGGING DATA

General Data

Pass

Depths

Well Head

Speed

Logging Run Comments

No

From

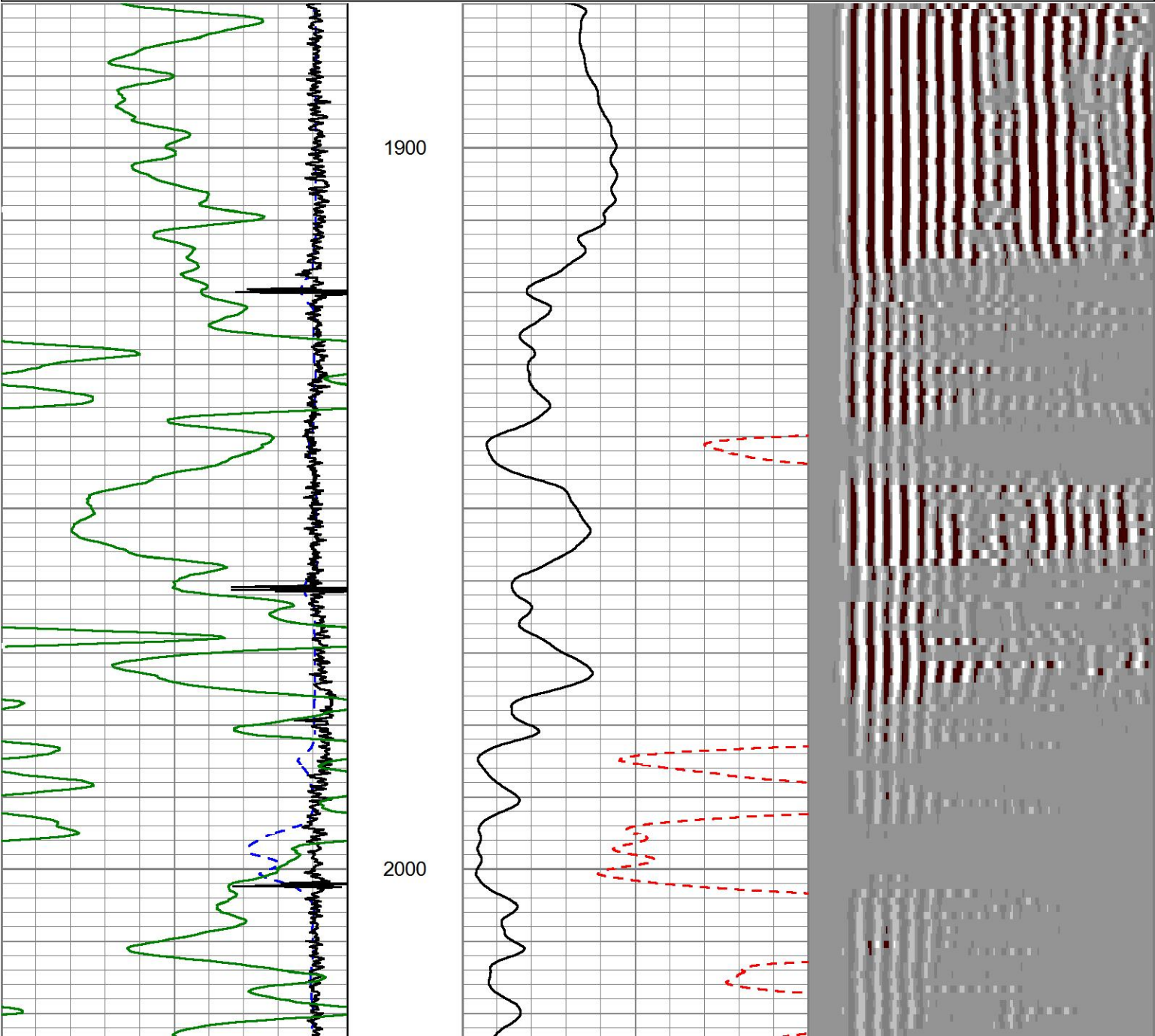
To

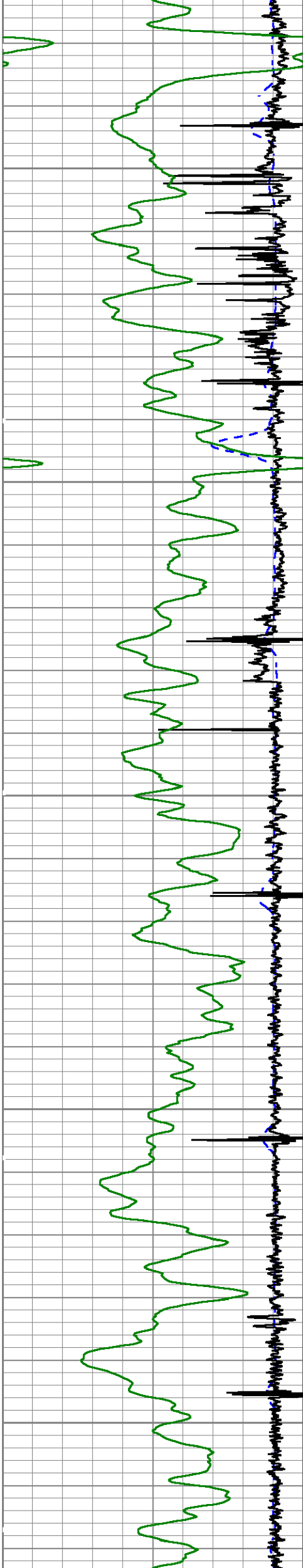
Pressure

Ft/Min

No.	TD	SURFACE CSG	14.7 PSI	20			
ONE							
	GAMMA		CBL		RMTI		
Pass	Scale		Scale		Scale		Scale
No.	L	R	L	R	L	R	L L
ONE	0	150	0	100	60	0	
DIRECTIONAL INFORMATION							
Maximum Deviation			deg. @		KOP		

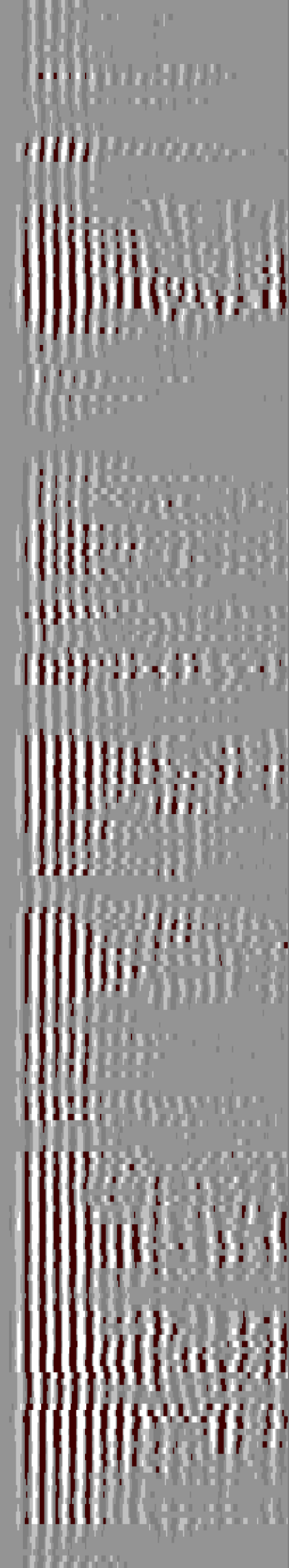
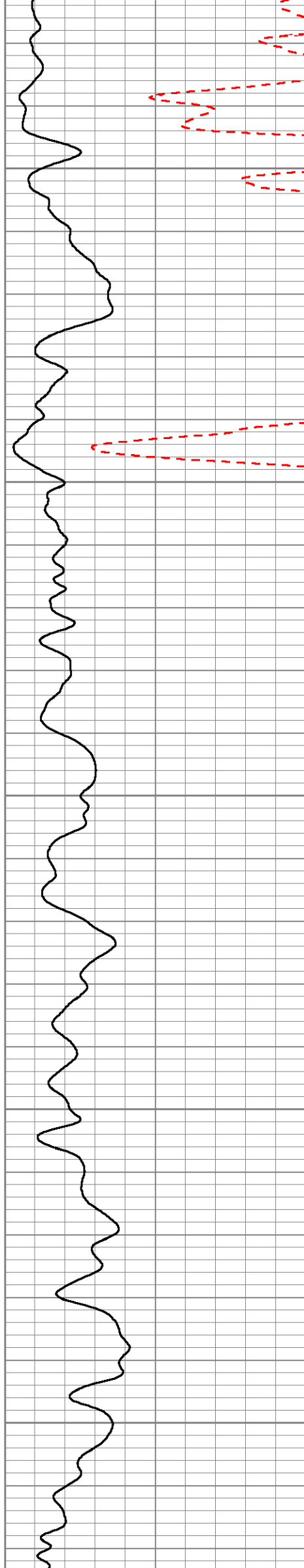
MAIN PASS							
HALLIBURTON							
5" = 100'							
Database File		c:\users\h182119\desktop\ursa b&v logs\second 12\b&v 33d-07-07-95\33d.db					
Dataset Pathname		MAIN					
Presentation Format		Unknown					
Dataset Creation		Mon Mar 27 06:17:20 2017					
Charted by		Depth in Feet scaled 1:240					
420	TRAVEL TIME (usec)	220	LTEN	0	AMP AMPLITUDE (mV)	10	200 MSG 1060
-3500	Collar Locator	350	0 (lb3000	0	AMPLITUDE (mV)	100	
0	Gamma Ray (GAPI)	150					



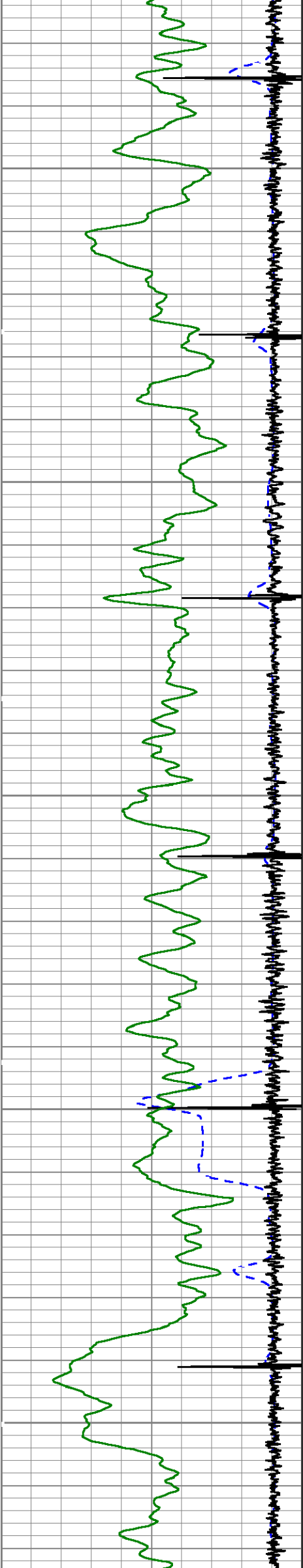


2100

2200



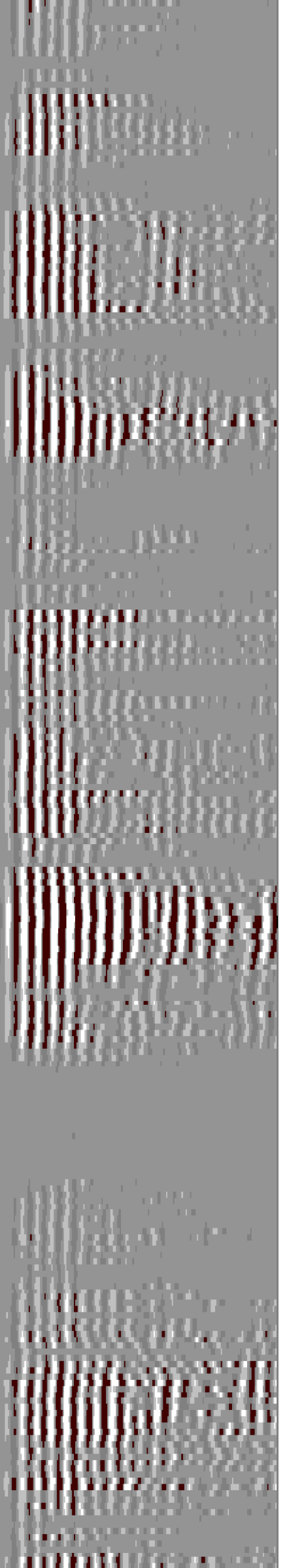
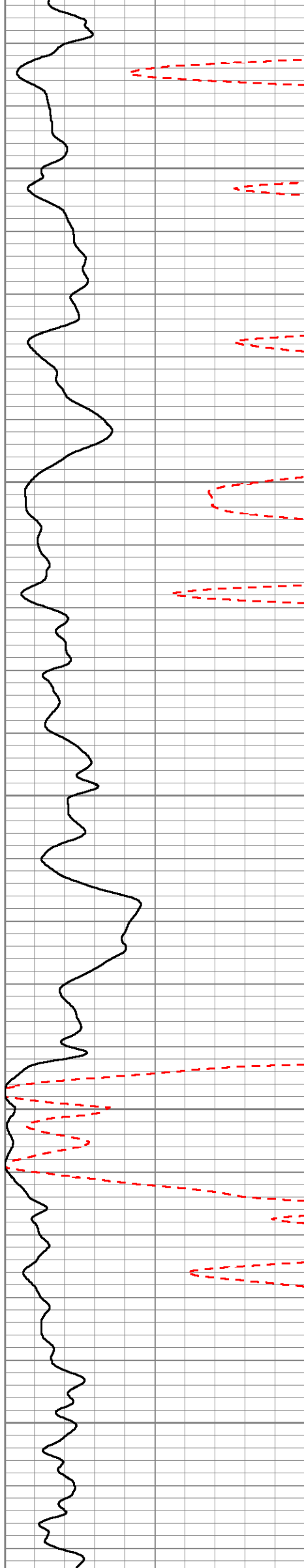


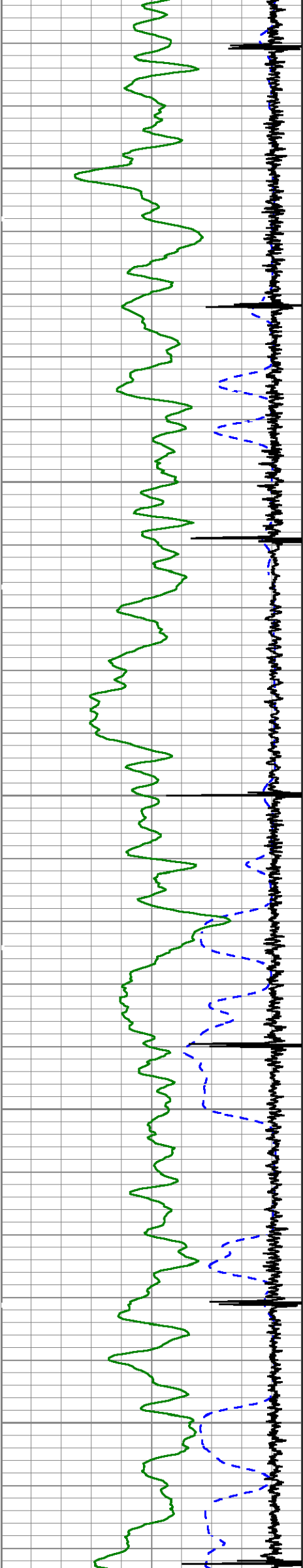


2300

2400

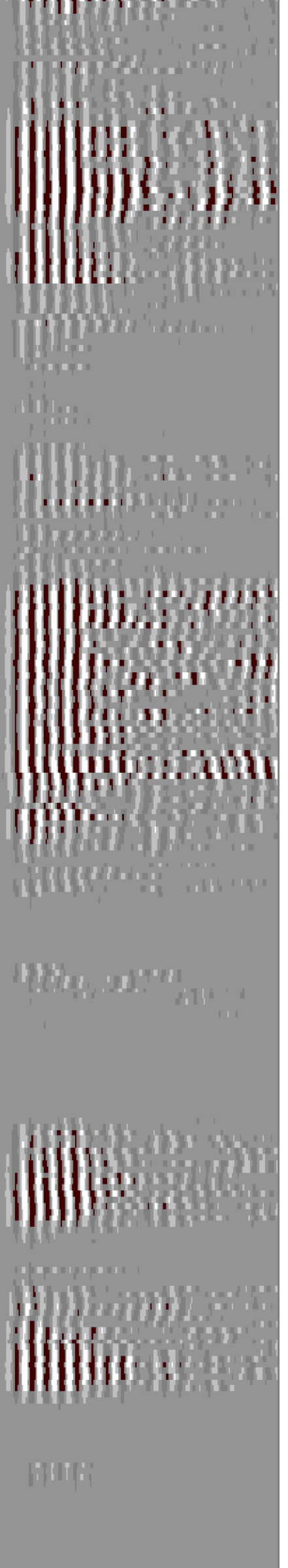
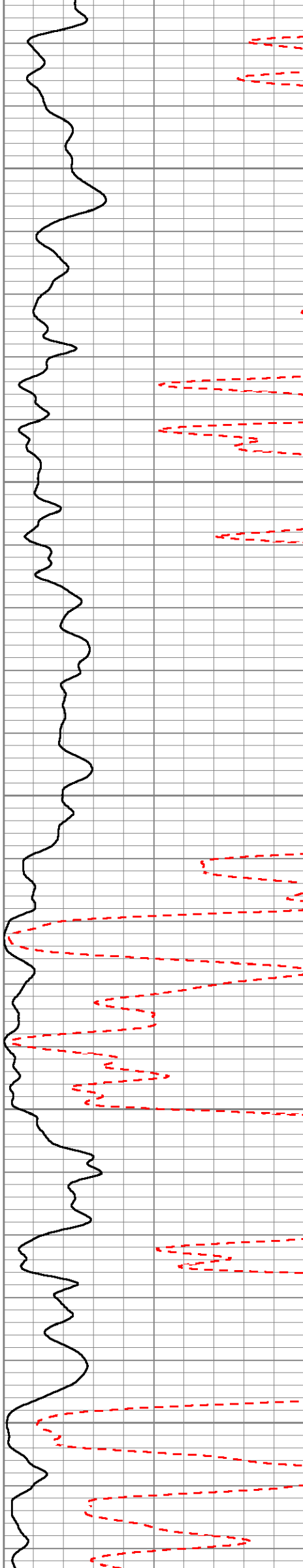
2500

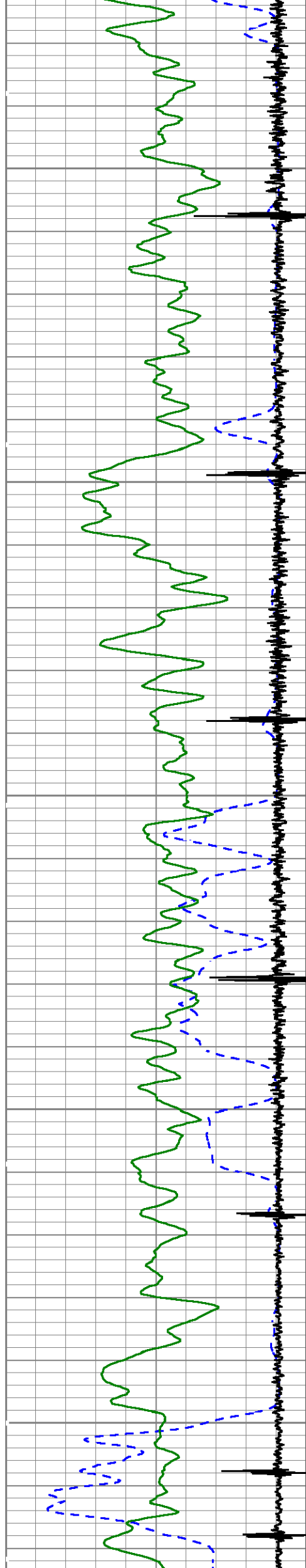




2600

2700

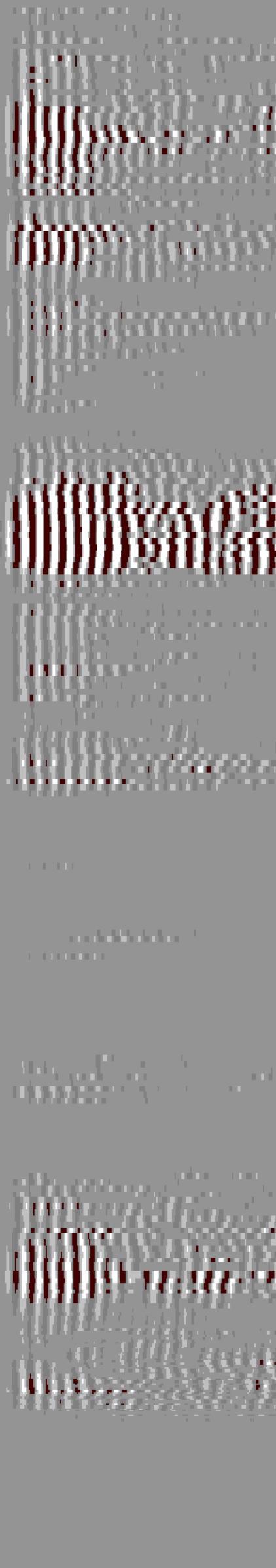
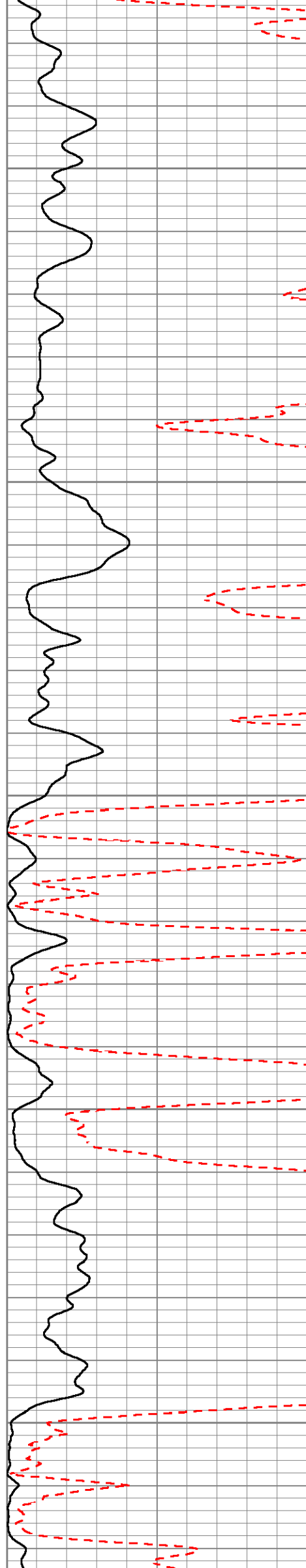


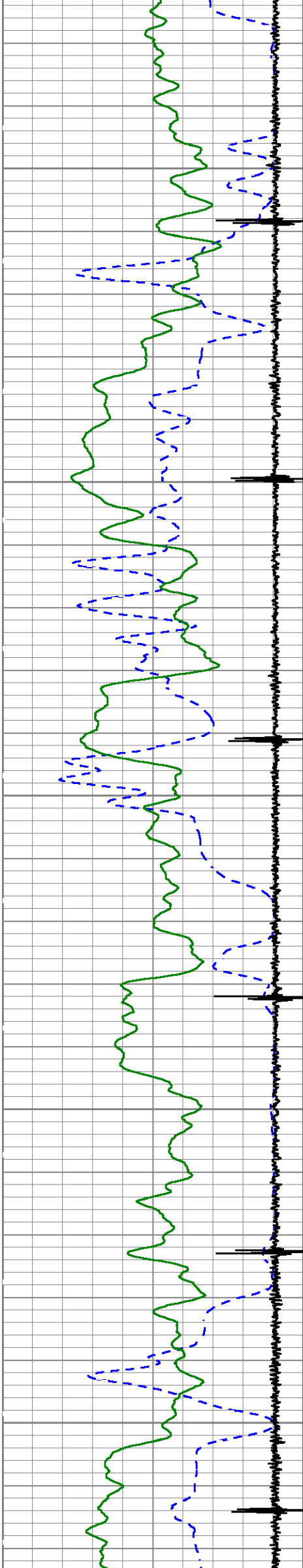


2800

2900

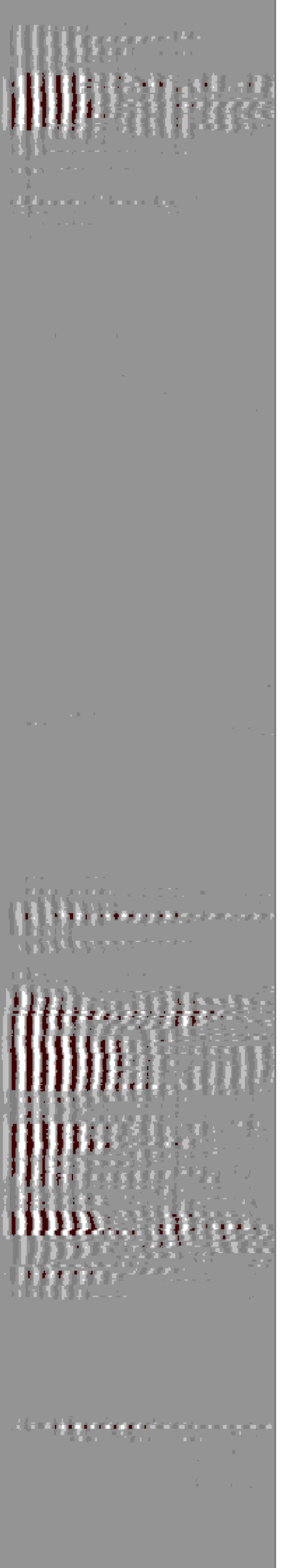
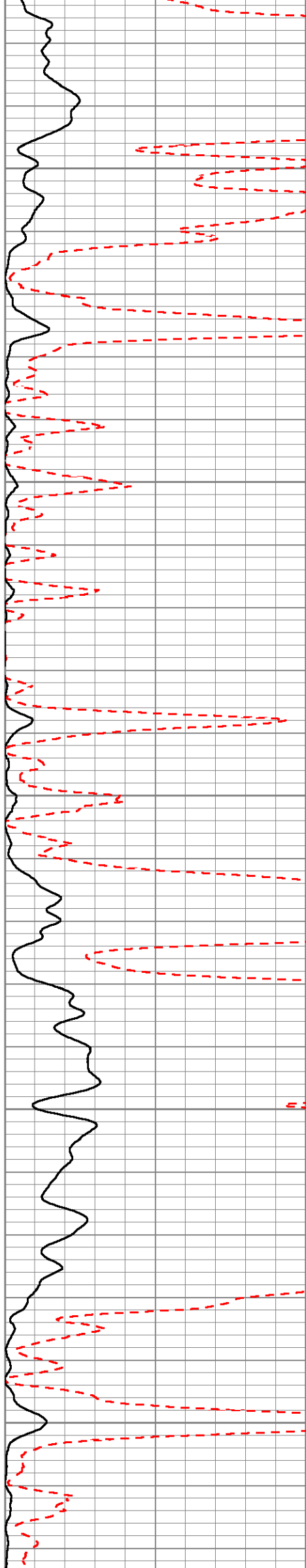
3000

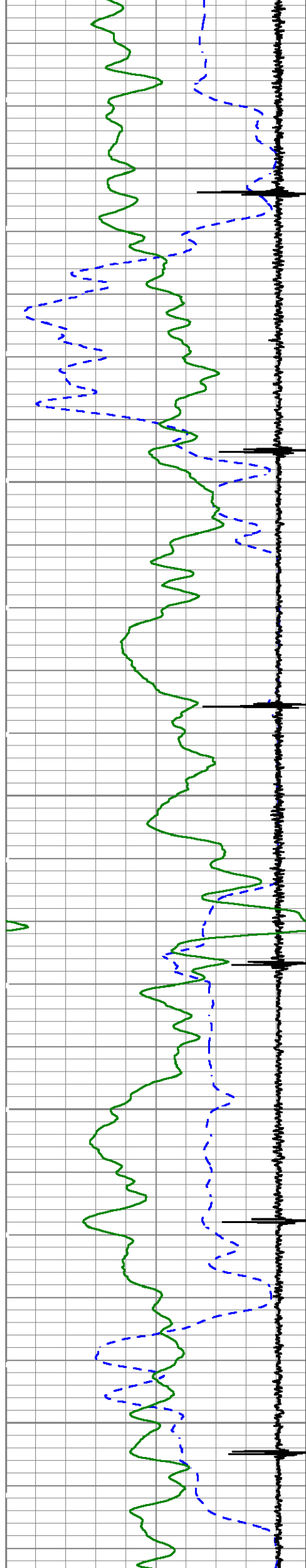




3100

3200

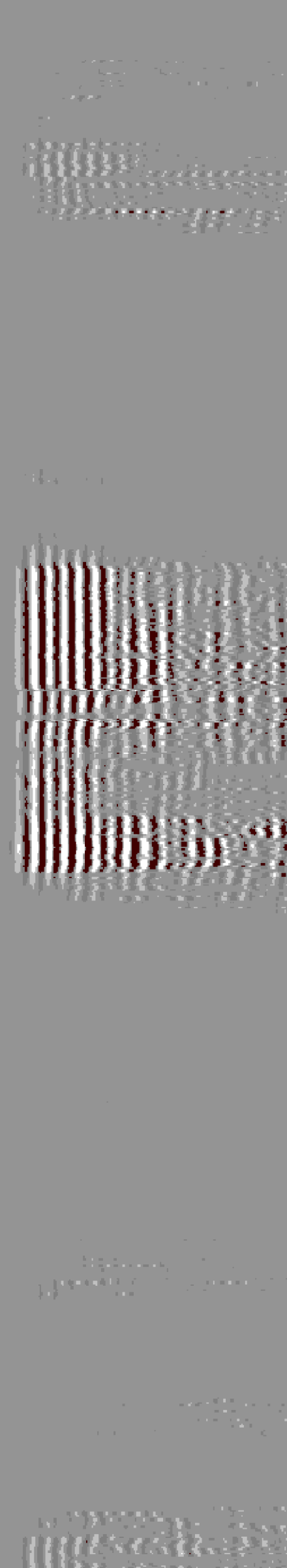
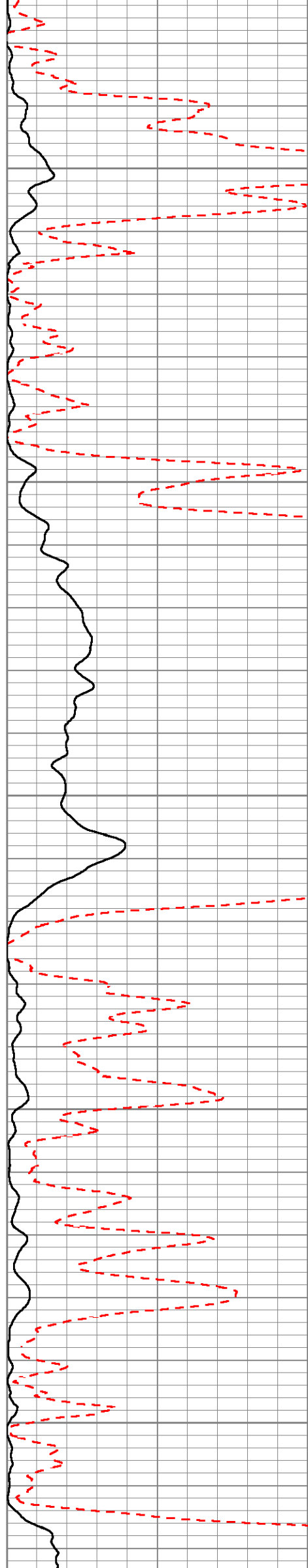




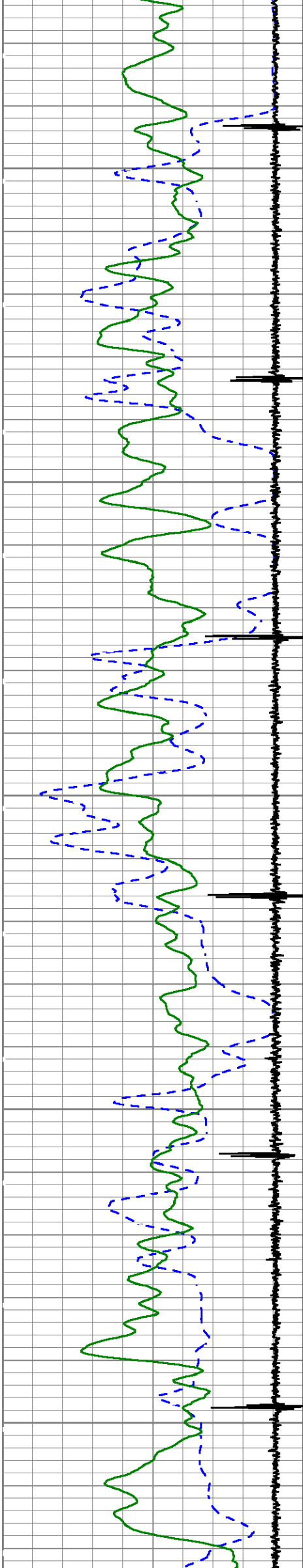
3300

3400

3500

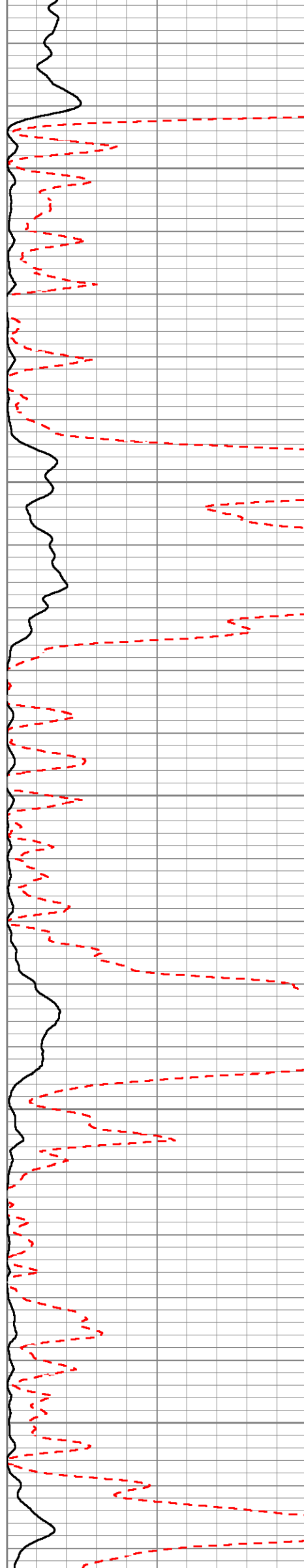


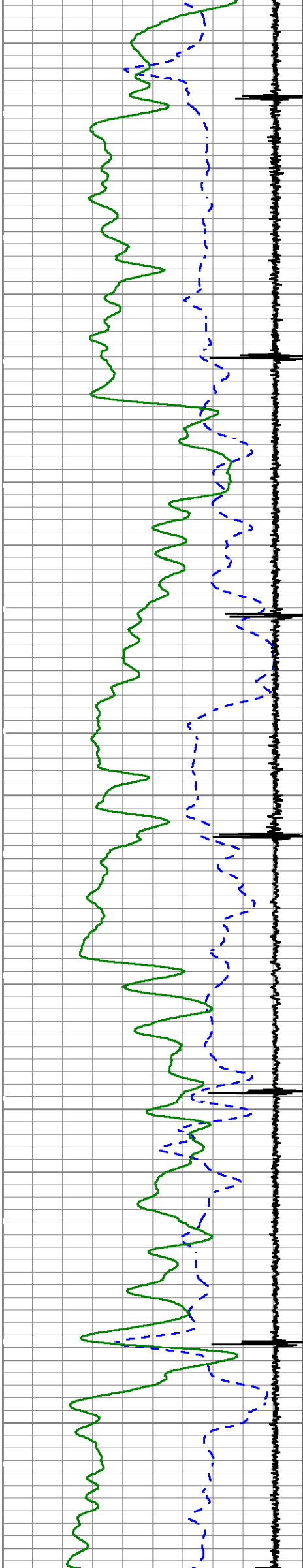




3600

3700

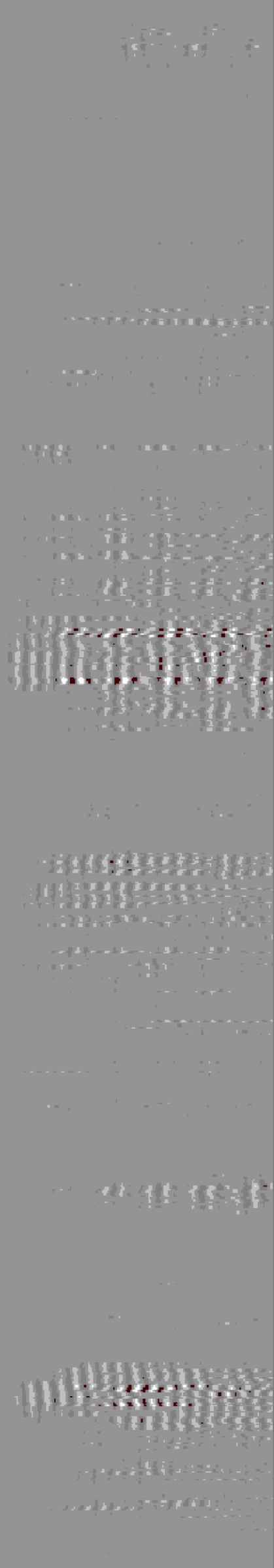
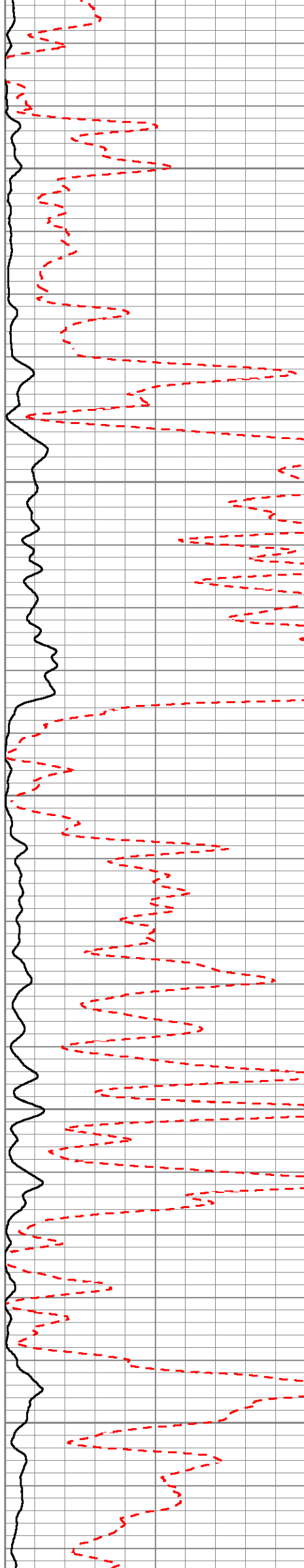


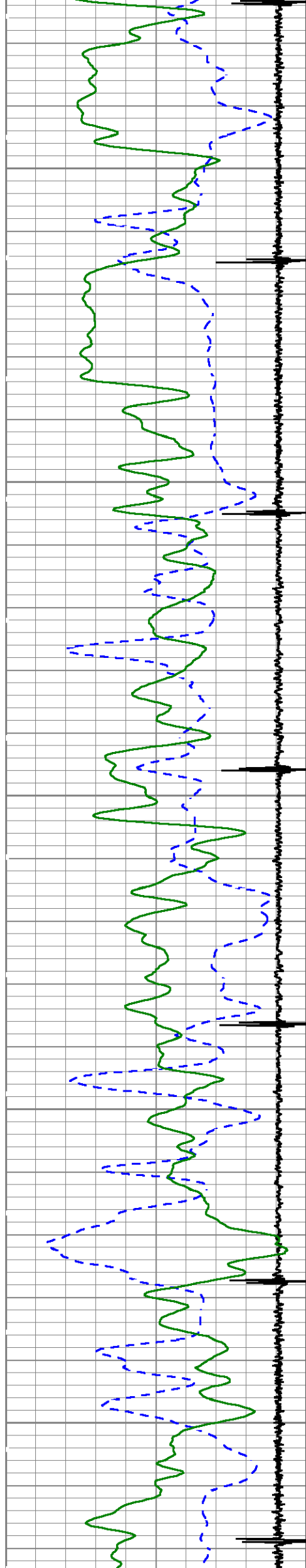


3800

3900

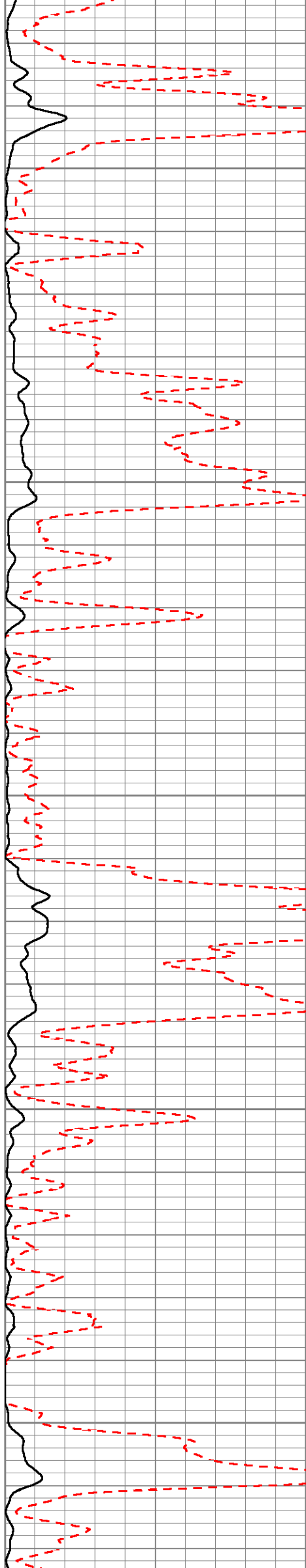
4000

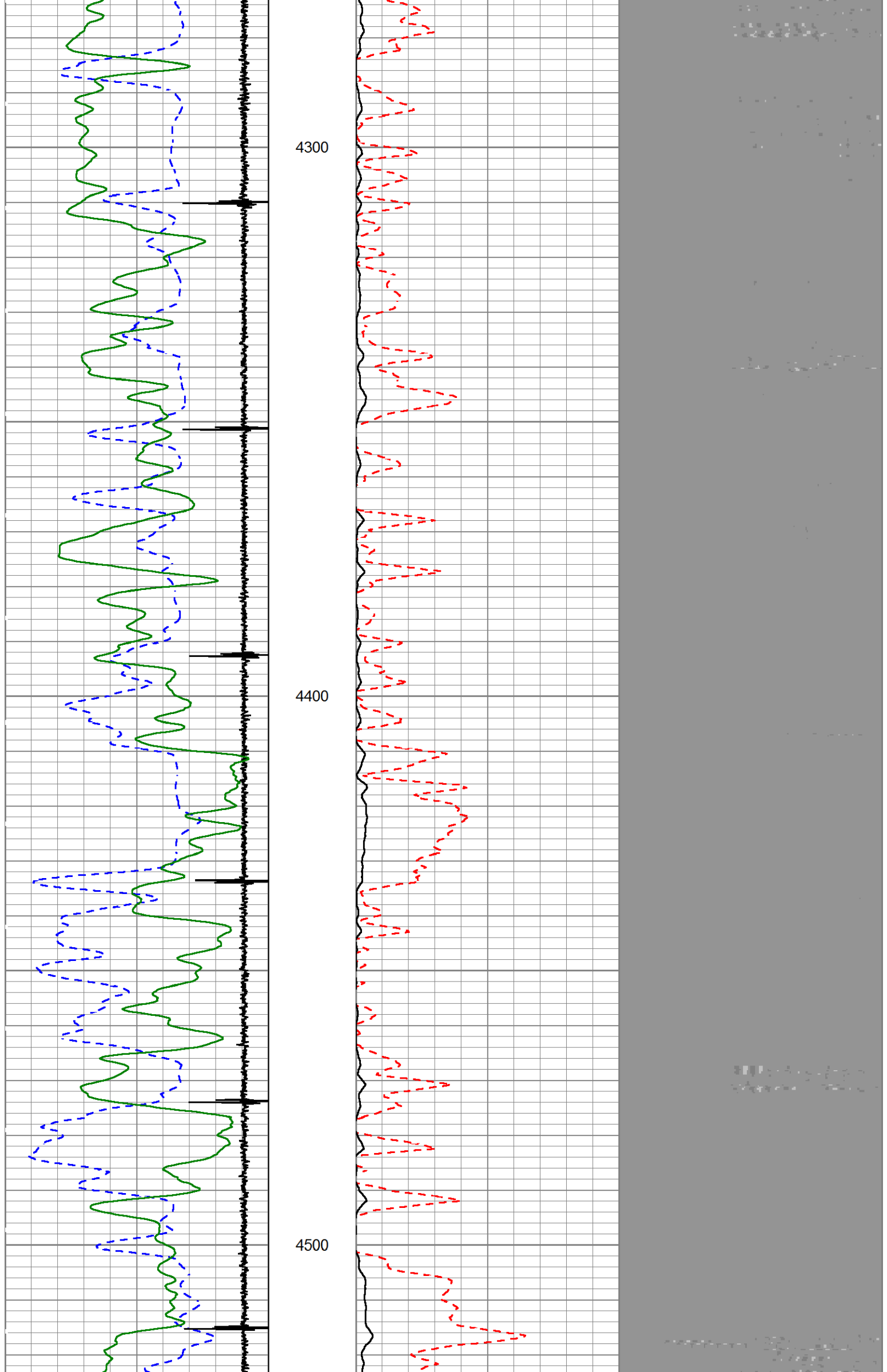


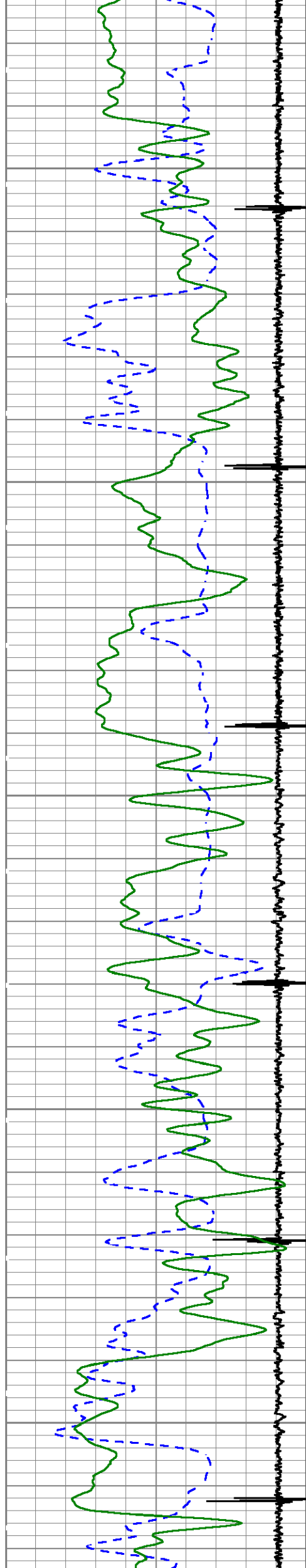


4100

4200

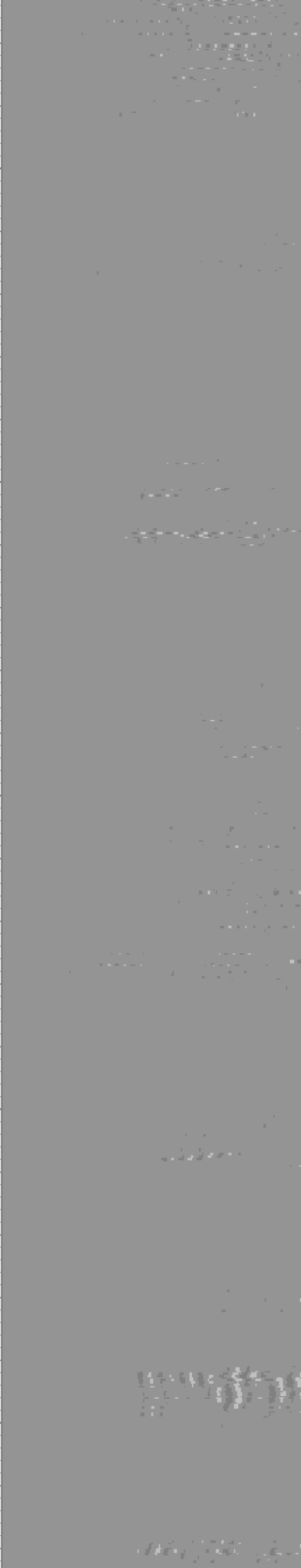
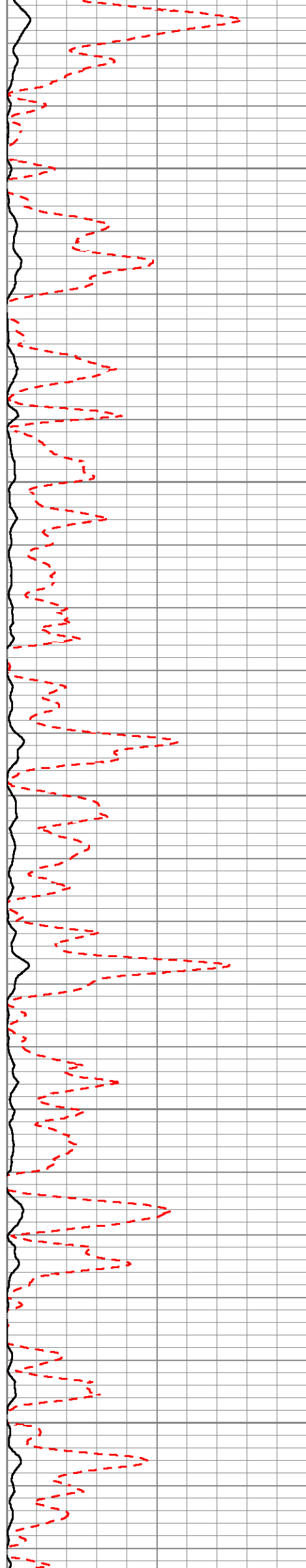




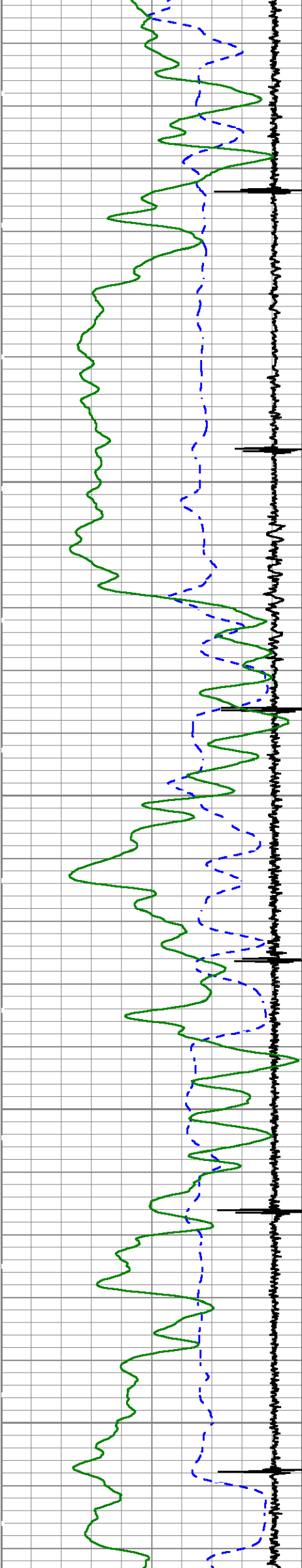


4600

4700



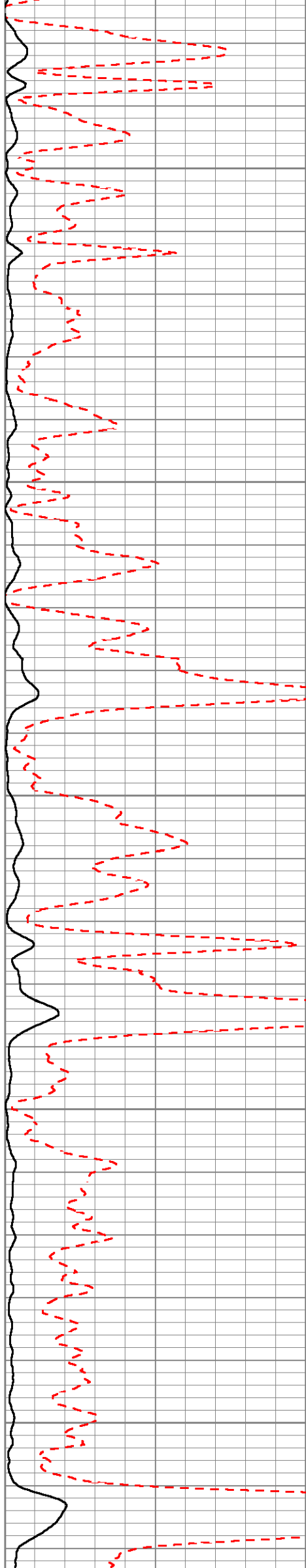


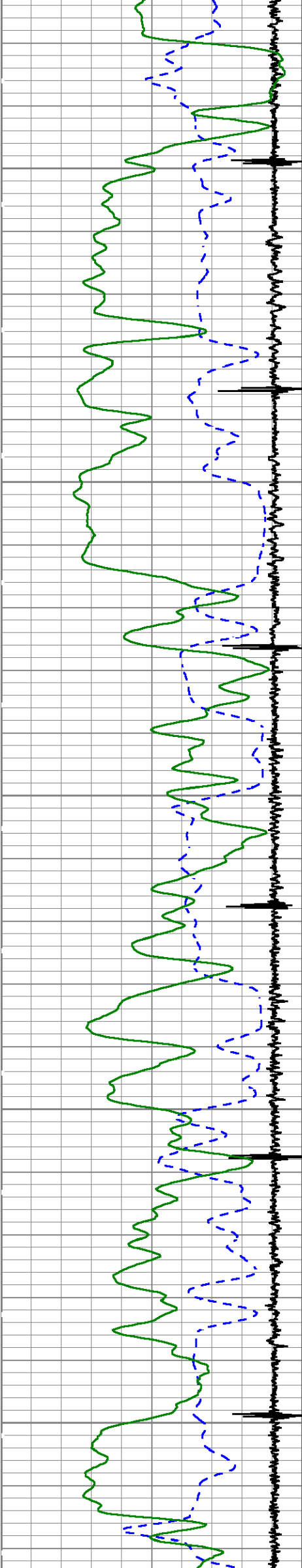


4800

4900

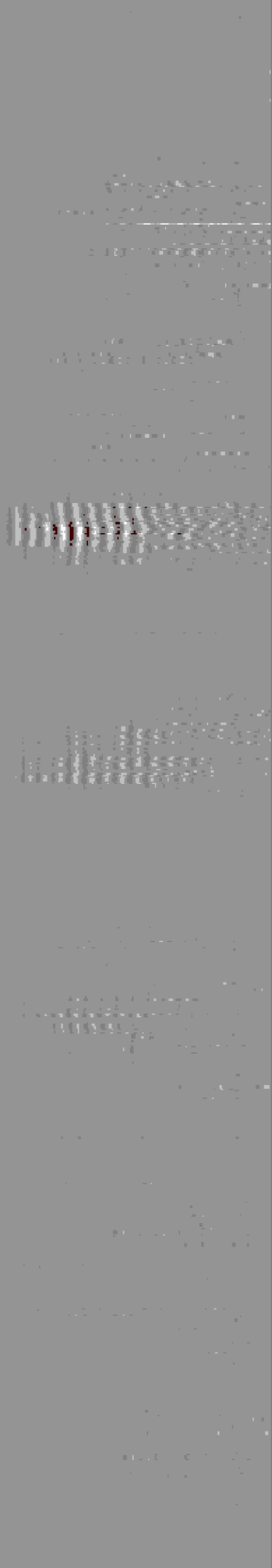
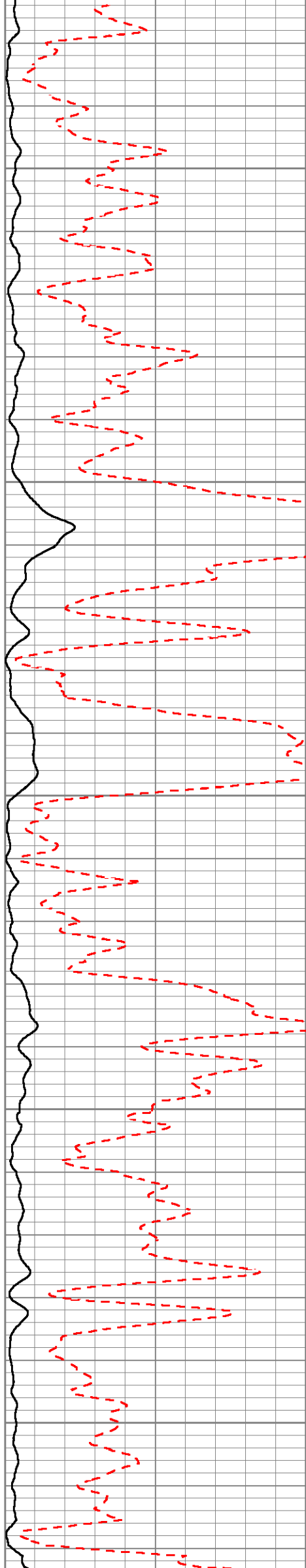
5000

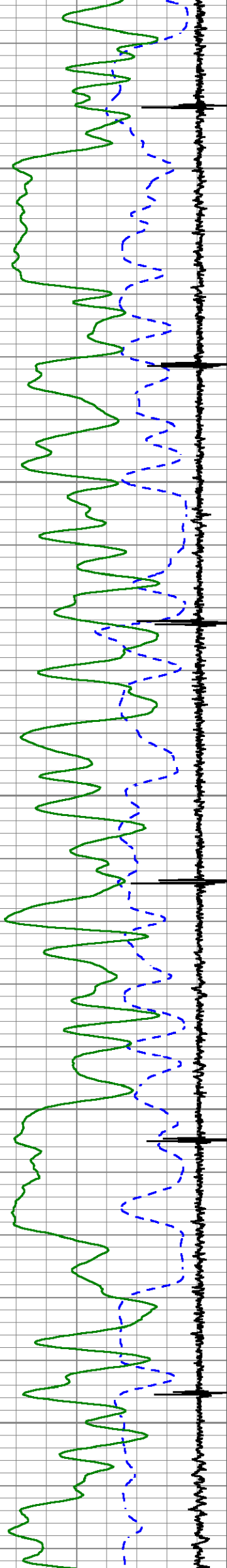




5100

5200

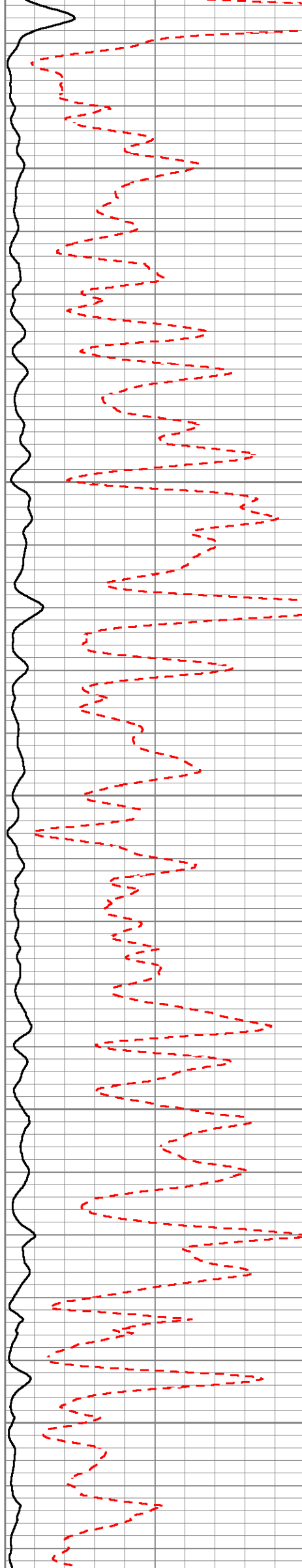


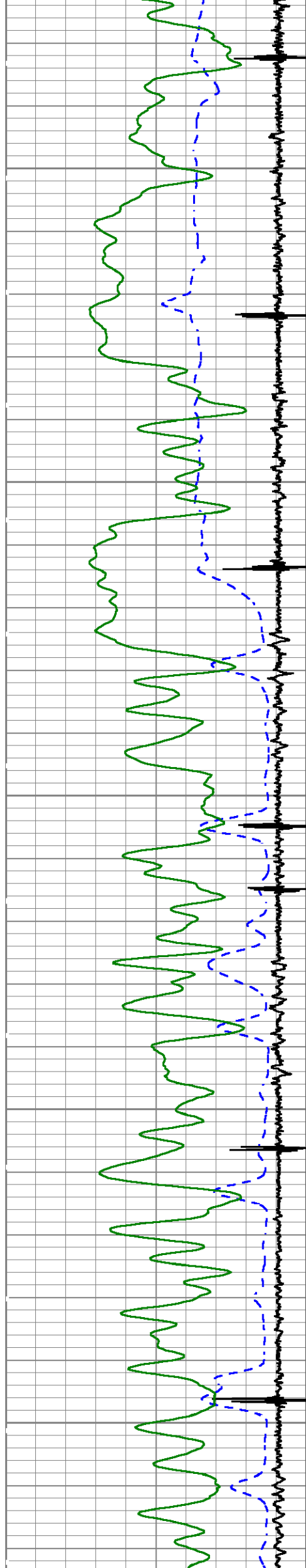


5300

5400

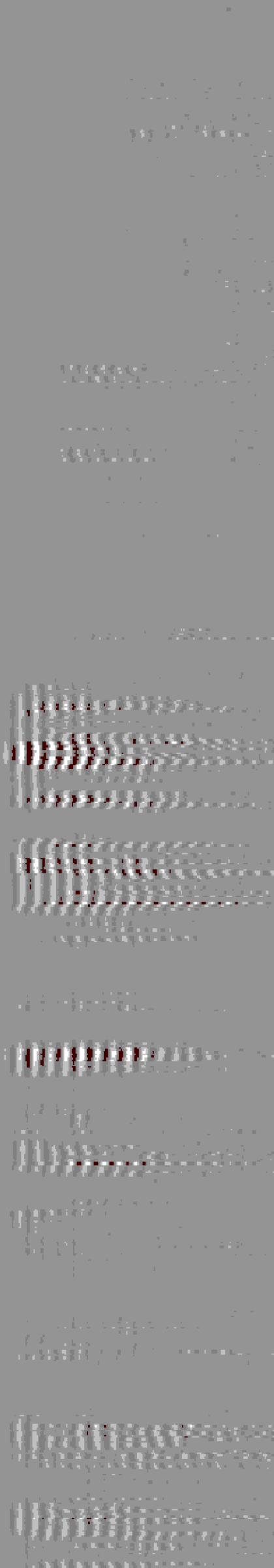
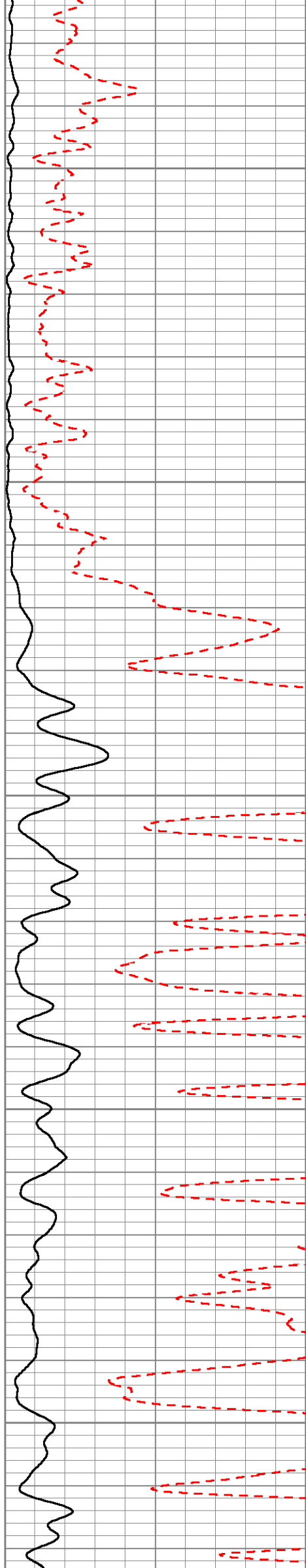
5500

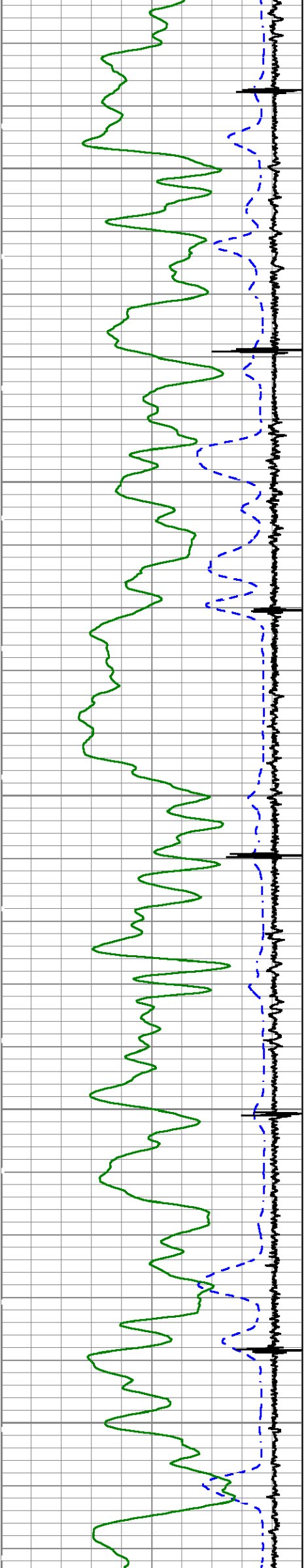




5600

5700

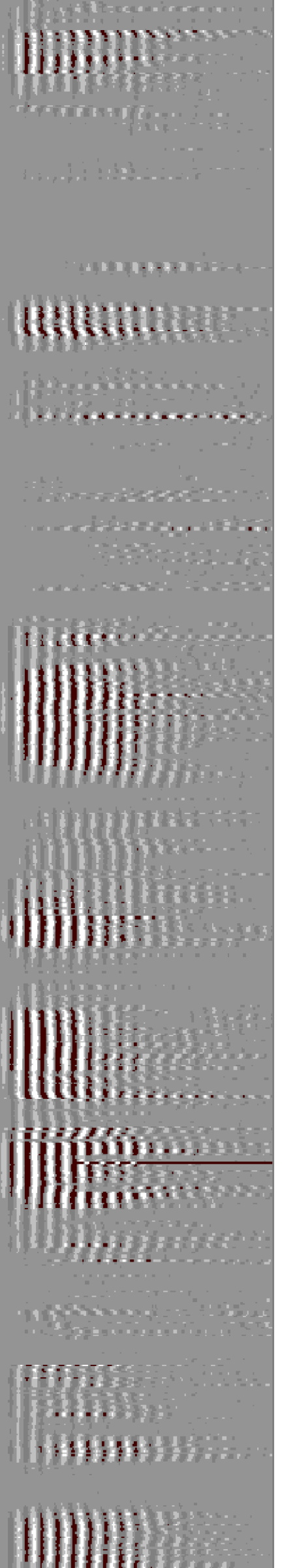
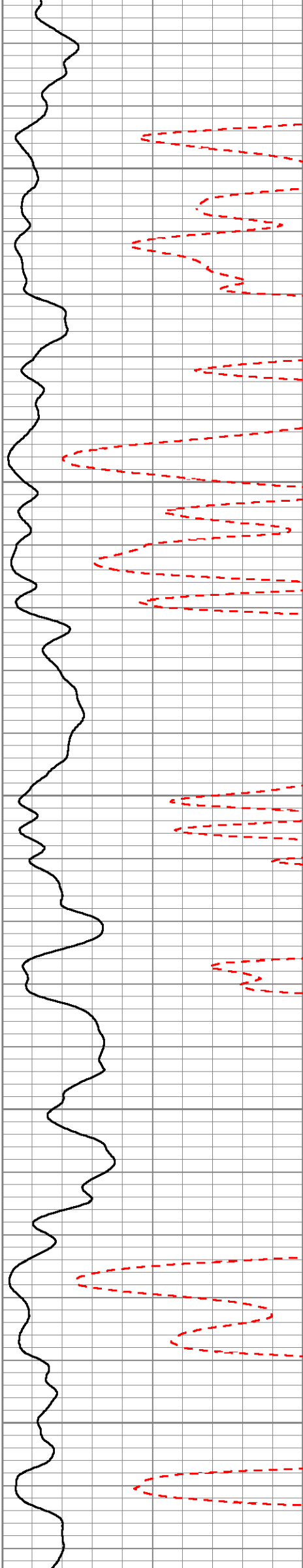




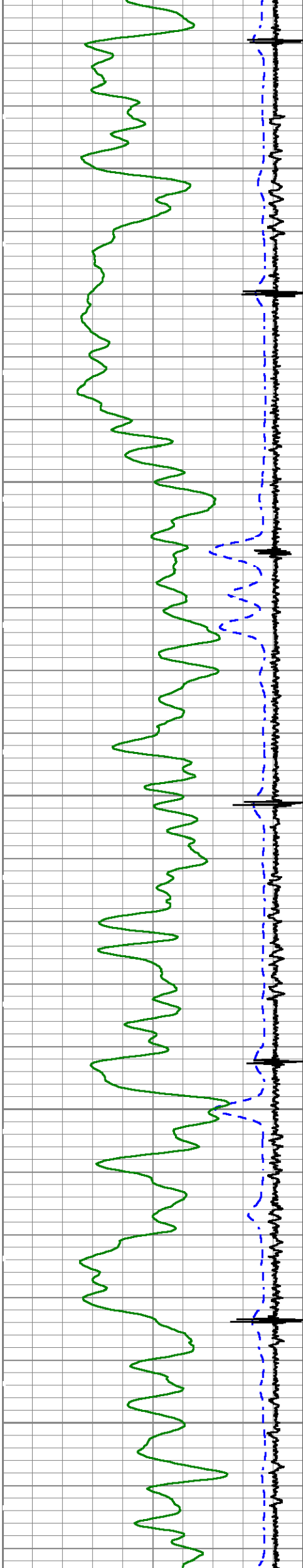
5800

5900

6000

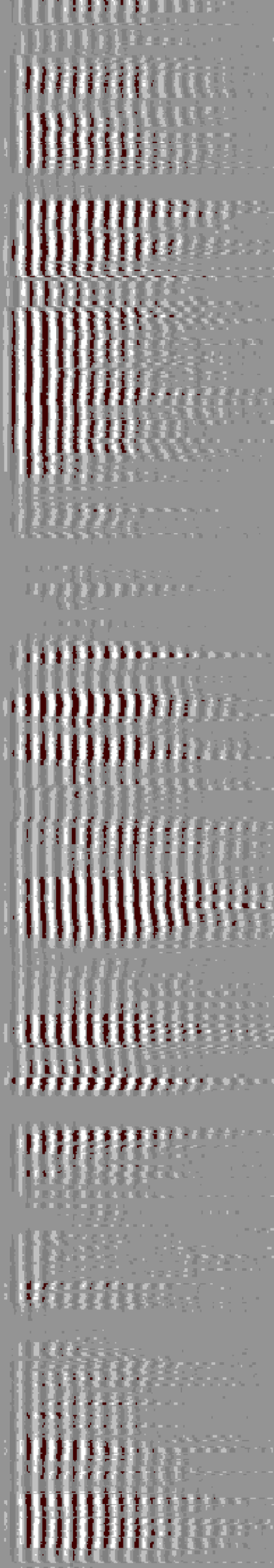
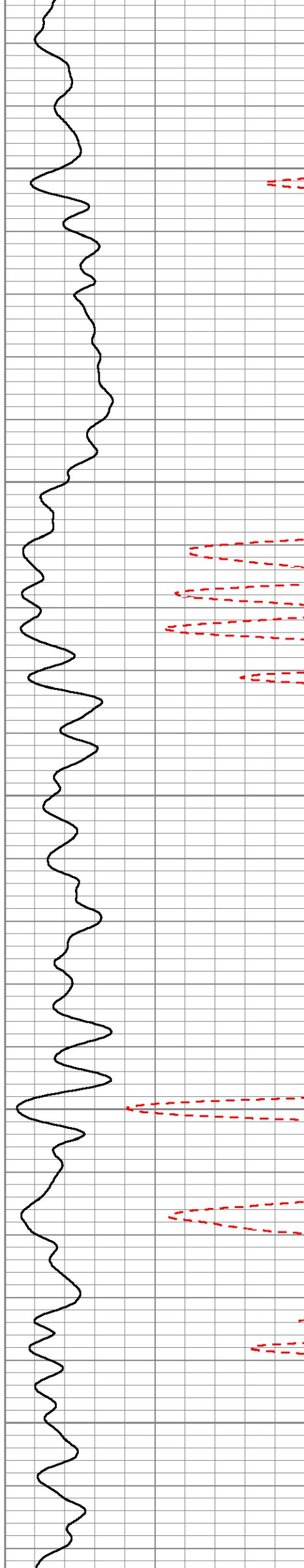


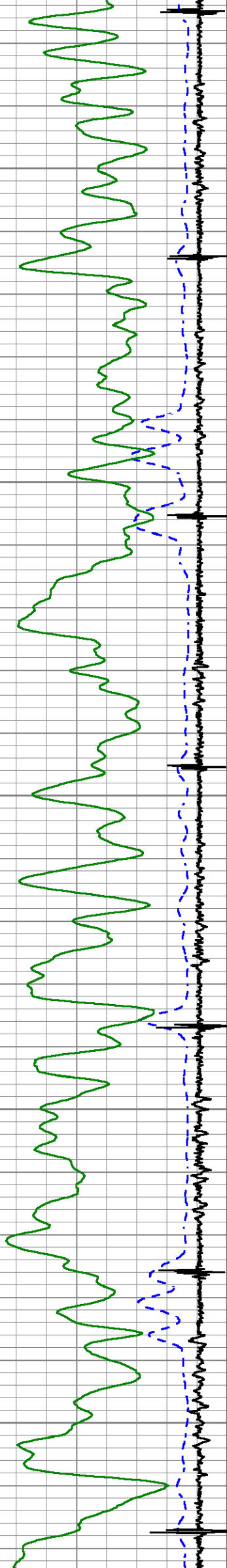




6100

6200

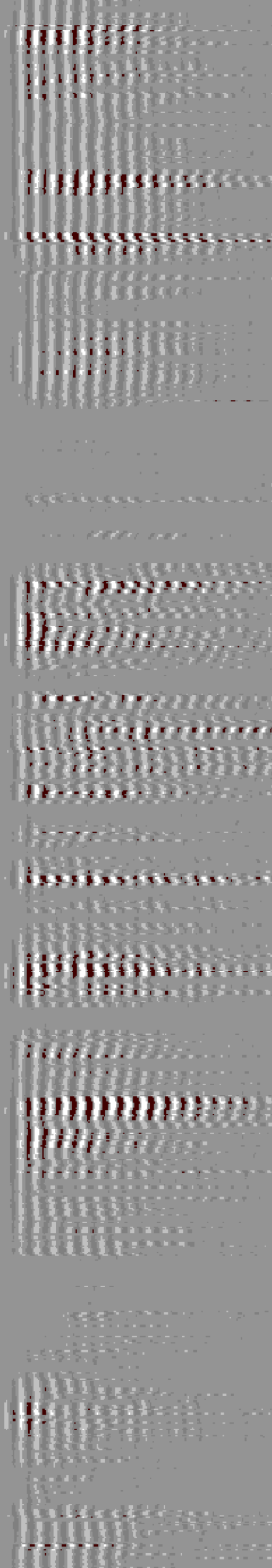
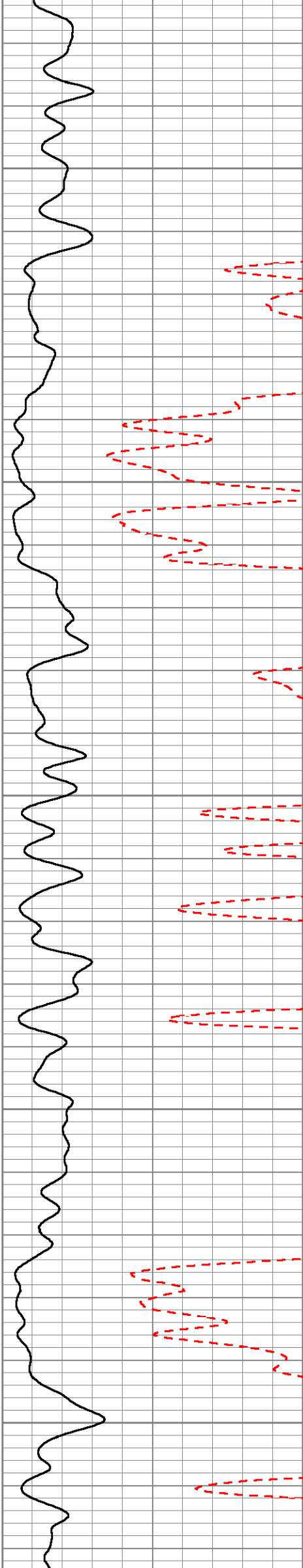


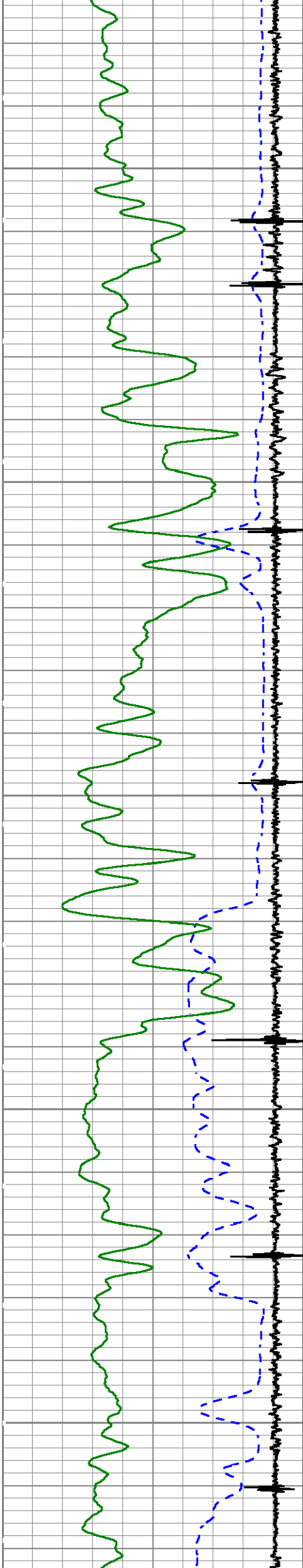


6300

6400

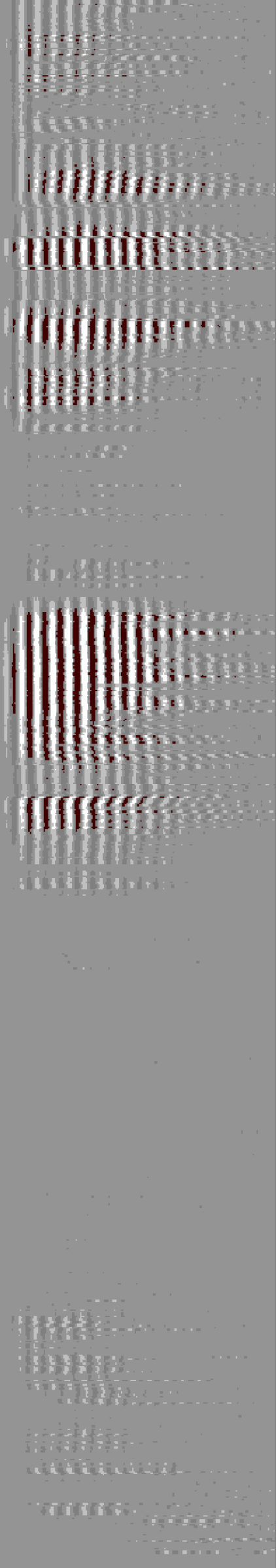
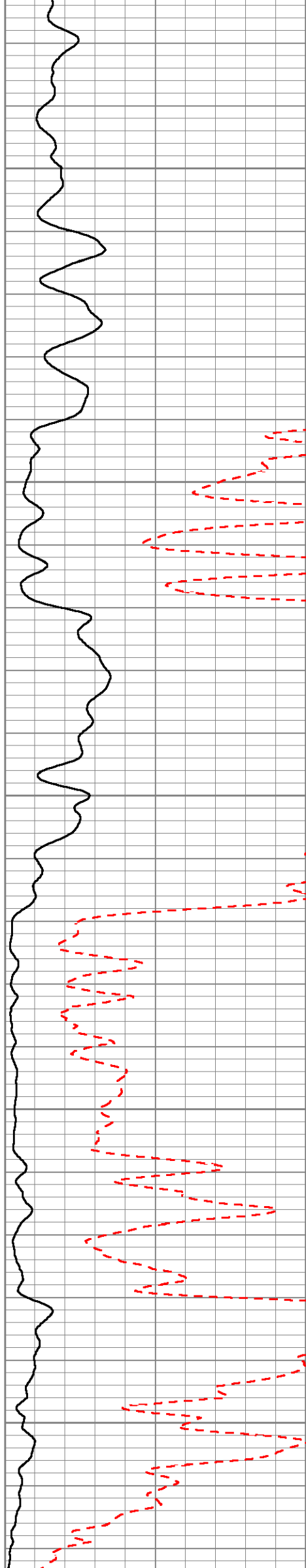
6500

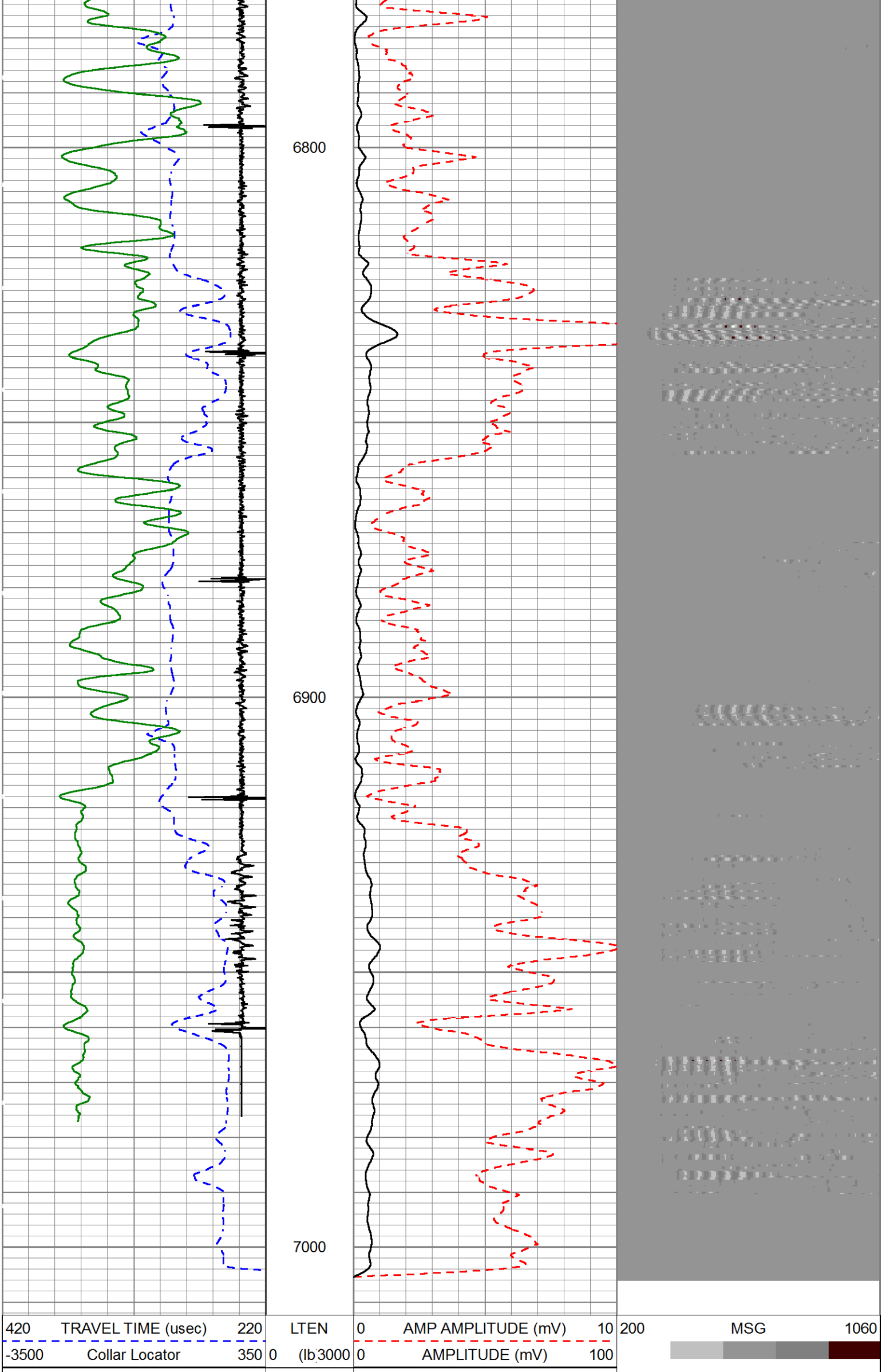




6600

6700





MAIN PASS

HALLIBURTON

5" = 100'

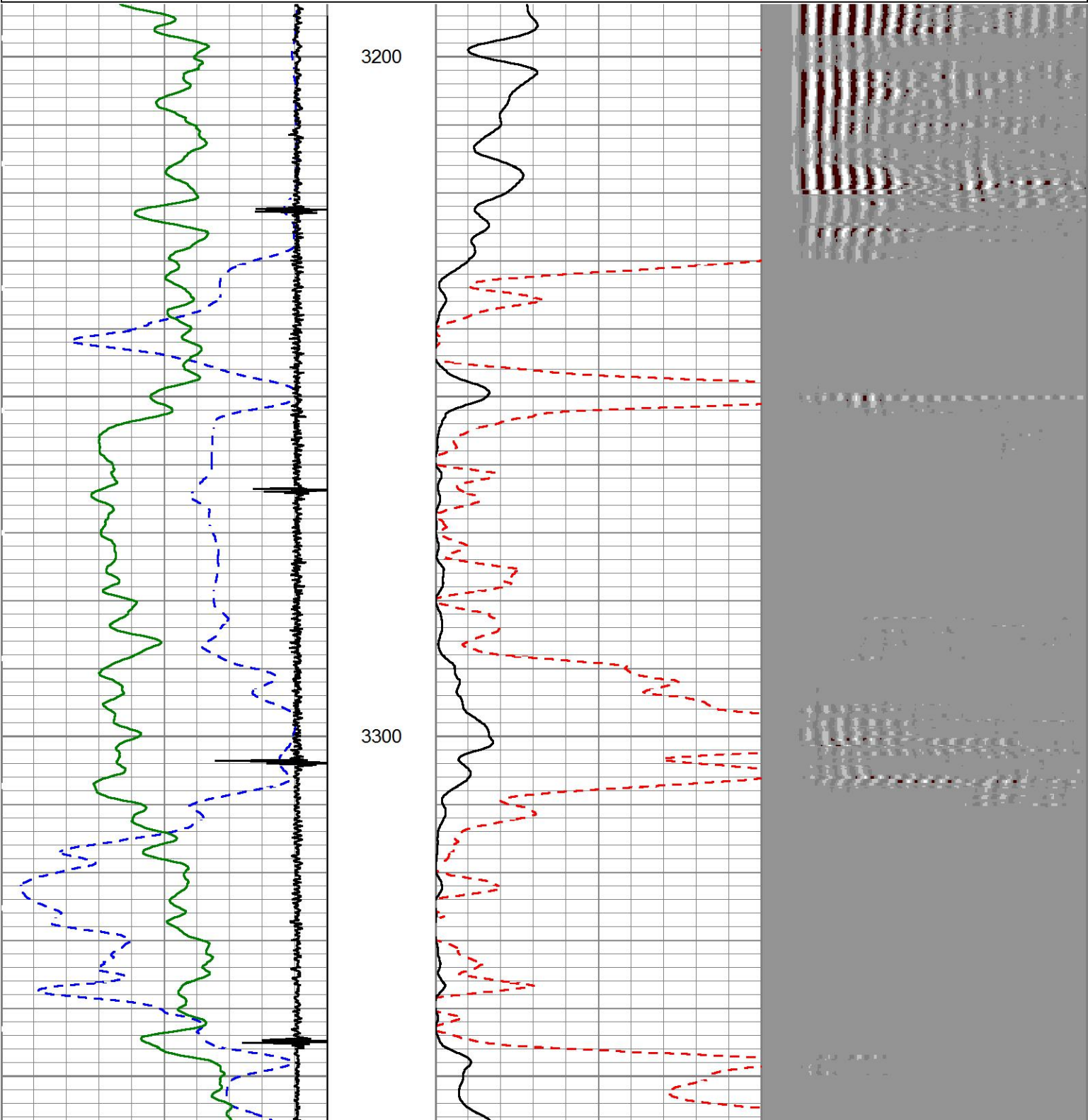
REPEAT PASS

HALLIBURTON

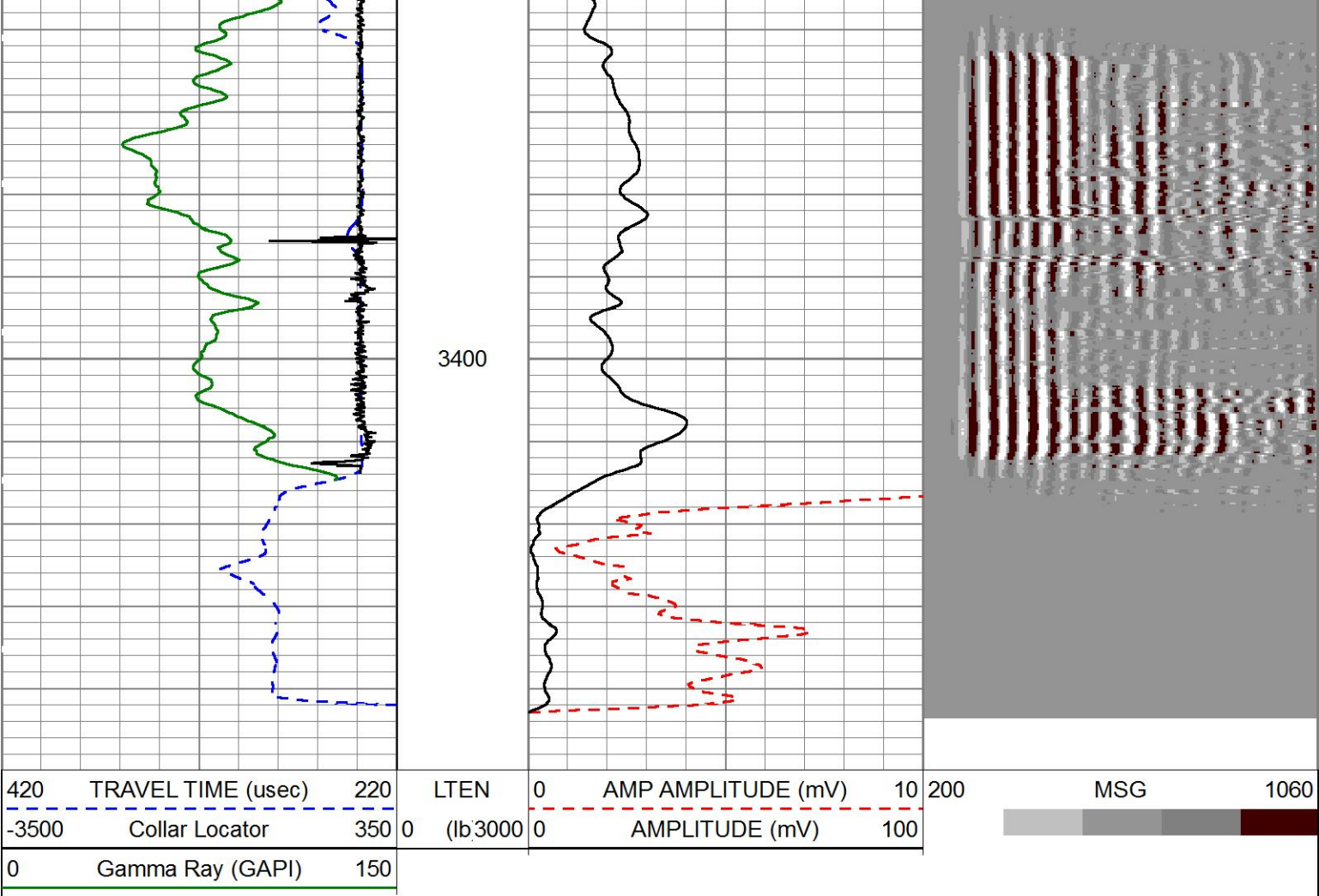
5" = 100'

Database File	c:\users\h182119\desktop\ursa b&v logs\second 12\b&v 33d-07-07-95\33d.db
Dataset Pathname	RPT
Presentation Format	Unknown
Dataset Creation	Mon Mar 27 05:45:37 2017
Charted by	Depth in Feet scaled 1:240

420	TRAVEL TIME (usec)	220	LTEN	0	AMP AMPLITUDE (mV)	10	200	MSG	1060
-3500	Collar Locator	350	0	(lb 3000	0	AMPLITUDE (mV)	100		
0	Gamma Ray (GAPI)	150							







REPEAT PASS

5" = 100'

Log Variables

Database C:\Users\H182119\Desktop\URSA B&V LOGS\SECOND 12\B&V 33D-07-07-95\33d.db  
Dataset field/well/run1/MAIN/\_vars\_

Top - Bottom

BHSAL1 1	BHSAL2 0	BHTEMP_Src TEMP	BITSIZE in 7.875	BORSAL kppm 150	BOTTEMP degF 200	CASED? Yes	CASEOD in 4.5
CASETHCK in 0.25	CASEWGHT lb/ft 11.6	LIRISHFTF 0	LIRISHFTN 0	LTH Sandstone	MAXAMPL mV 82	MINAMPL mV 1	MINATTN db/ft 0.8
MSGGN 1	MudWgt lb/gal 8.4	PERFS 0	POROS1 1	POROS2 0	PPT usec 0	RHOCF 0.25	SO in 0
SRFTEMP degF 50	TDEPTH ft 6500	UHSGC NONE	USERFTT usec/ft 0	ZREF MRayl 1.7			

Calibration Report


Database File C:\Users\H182119\Desktop\URSA B&V LOGS\SECOND 12\B&V 33D-07-07-95\33d.db  
Dataset Pathname MAIN  
Dataset Creation Mon Mar 27 06:17:20 2017

Cement Bond Log Shop Calibration Report

Serial-Model: 11836468-A  
Calibration Performed: Sun Mar 26 19:34:08 2017

Free Pipe Calibration		
TT	Measured	Units
Amplitude	245.6	usec
Log Base Line	408.0	mV
	19.3	mV
Calibration References and Gain		
Name	Value	Units
Pipe O.D.	4.500	in
Pipe Weight	11.6	lb/ft
Pipe Ref. Amp.	82.0	mV
Amp. Gain	0.208	

Gamma Ray Calibration Report						
Type / Serial:			002 / 12159411			
SHOP CALIBRATION		Mon Feb 20 15:54:04 2017				
	Counts/Sec.	Gain	Offset	Jig	Units	
Background	27.6				cps	
Calibrator	317.4				cps	
		1.4943			GAPI/cps	
PRIMARY VERIFICATION						
Background	0.0				cps	
Calibrator	0.0				cps	
Difference				0.0	GAPI	
BEFORE SURVEY VERIFICATION						
Background	0.0				cps	
Calibrator	0.0				cps	
Difference				0.0	GAPI	
AFTER SURVEY VERIFICATION						
Background	0.0				cps	
Calibrator	0.0				cps	
Difference				0.0	GAPI	

Sensor	Offset (ft)	Schematic	Description	Length (ft)	O.D. (in)	Weight (lb)
CCL	35.86		STNDCH-STND_CH 1.4375 IN CABLE HEAD	1.50	1.44	1.00
			TTTCU-002 (12159411) Through Tubing Telemetry Cartridge - Ultrawire	7.65	1.69	37.00
GR	33.60		XHU-003 (000001) Crossover Halliburton 1553 to Ultrawire	1.58	1.69	7.00

RmtTFGT	22.95		RMTI-A (12376244) Halliburton RMTI Tool	14.00	2.13	77.00
RmtTNGT	22.45					
RmtFP5V	14.70		X-OVER-SondexxGo Sondex Box x Go Pin Cross Over	0.31	1.69	1.00
RmtNFwwMcsPI	14.70		CENT-CASTM-CENT CAST M INLINE CENTRALIZER	2.16	3.13	25.00
RmtCommFWa	14.70					
Temp	9.57					
TT3FT	7.32		HCBLM-A (11836468) Halliburton HCBLM Tool	9.38	2.75	116.00
AMP3FT	7.32					
WVF5FT	6.36					
WVF3FT	2.84		CENT-CASTM-CENT CAST M INLINE CENTRALIZER	2.16	3.13	25.00
LLMTEN	0.00		AUH-001 (11072111) Adaptor Ultrawire/Halliburton	0.38	1.69	3.00
			BUL-001 (000001) Bullnose	0.30	1.69	1.50
Dataset: 33d.db: field/well/run1/MAIN Total length: 39.43 ft Total weight: 293.50 lb O.D.: 3.13 in						

Company	URSA OPERATING COMPANY			
Well	B&V 33D-07-07-95			
Field	WILDCAT			
County	GARFIELD	State	CO	
HALLIBURTON	CEMENT BOND LOG			