

HALLIBURTON

iCem[®] Service

EXTRACTION OIL & GAS

United States of America

Kiteley 4

Surface

Job Date: Thursday, January 26, 2017

Sincerely,
Derek Trier

Legal Notice

Disclaimer:

All information in this report is provided subject to the terms and conditions which govern the services provided by Halliburton. Halliburton personnel use their best efforts in gathering information and their best judgment in interpreting it, but any interpretation, research, analysis or recommendation furnished by Halliburton are opinions based upon inferences from measurements and empirical relationships and assumptions, which inferences and empirical relationships and assumptions are not infallible, and with respect to which professionals in the industry may differ. Accordingly, HALLIBURTON IS UNABLE TO GUARANTEE THE ACCURACY OF ANY CHART INTERPRETATION, RESEARCH ANALYSIS, OR JOB RECOMMENDATION and any interpretation or recommendation is not for use of or reliance upon by any third party. The customer has full responsibility for any of its decisions which are based on the information provided in this report.

Table of Contents

1.0 Cementing Job Summary 4

 1.1 Executive Summary4

2.0 Real-Time Job Summary 6

 2.1 Job Event Log6

3.0 Attachments..... 7

 3.1 Case 1-Custom Results.png.....7

 3.2 Case 1-Custom Results (1).png8

1.0 Cementing Job Summary

1.1 Executive Summary

Halliburton appreciates the opportunity to perform the cementing services on the **Kiteley 4** cement **Surface** casing job. A pre-job safety meeting was held before the job where details of the job were discussed, potential safety hazards were reviewed, and environmental compliance procedures were outlined.

Approximately, 35bbl of cement returned to surface.

Halliburton maintains a continuous quality improvement process and appreciates any comments or suggestions that you may have. Halliburton again thanks you for the opportunity to perform service work on this well. We hope to be your solutions provider for future projects.

Respectfully,

Halliburton [Ft. Lupton]

HALLIBURTON

Cementing Job Summary

The Road to Excellence Starts with Safety

Sold To #: 369404	Ship To #: 3770363	Quote #:	Sales Order #: 0903799677							
Customer: EXTRACTION OIL & GAS -		Customer Rep: Shawn Mctire								
Well Name: KITELEY	Well #: 4	API/UWI #: 05-123-43926-00								
Field: WATTENBERG	City (SAP): LONGMONT	County/Parish: WELD	State: COLORADO							
Legal Description: NW SW-21-3N-68W-1468FSL-559FWL										
Contractor:		Rig/Platform Name/Num: Spud Rig								
Job BOM: 7521										
Well Type: HORIZONTAL OIL										
Sales Person: HALAMERICA\HX38199		Srv Supervisor: Vaughn Oteri								
Job										
Formation Name										
Formation Depth (MD)	Top	Bottom								
Form Type	BHST									
Job depth MD	1566ft	Job Depth TVD								
Water Depth	Wk Ht Above Floor									
Perforation Depth (MD)	From	To								
Well Data										
Description	New / Used	Size in	ID in	Weight lbm/ft	Thread	Grade	Top MD ft	Bottom MD ft	Top TVD ft	Bottom TVD ft
Casing		9.625	8.921	36			0	1556	0	1556
Open Hole Section			13.5				0	1566	0	1566
Tools and Accessories										
Type	Size in	Qty	Make	Depth ft	Type	Size in	Qty	Make		
Guide Shoe	9.625				Top Plug	9.625	1	HES		
Float Shoe	9.625			1556	Bottom Plug	9.625				
Float Collar	9.625			1513	SSR plug set	9.625				
Insert Float	9.625				Plug Container	9.625	1	HES		
Stage Tool	9.625				Centralizers	9.625				
Fluid Data										
Stage/Plug #: 1										
Fluid #	Stage Type	Fluid Name	Qty	Qty UoM	Mixing Density lbm/gal	Yield ft ³ /sack	Mix Fluid Gal	Rate bbl/min	Total Mix Fluid Gal	
1	Red Dye Spacer	Red Dye Spacer	20	bbl	8.33			5		
Fluid #	Stage Type	Fluid Name	Qty	Qty UoM	Mixing Density lbm/gal	Yield ft ³ /sack	Mix Fluid Gal	Rate bbl/min	Total Mix Fluid Gal	
2	SwiftCem	SWIFTCM (TM) SYSTEM	550	sack	13.5	1.74		8	9.2	
Fluid #	Stage Type	Fluid Name	Qty	Qty UoM	Mixing Density lbm/gal	Yield ft ³ /sack	Mix Fluid Gal	Rate bbl/min	Total Mix Fluid Gal	
3	Fresh Water	Fresh Water	116	bbl	8.33					
Cement Left In Pipe										
Amount	42 ft	Reason				Shoe Joint				
Comment 35bbl of cement back to surface										

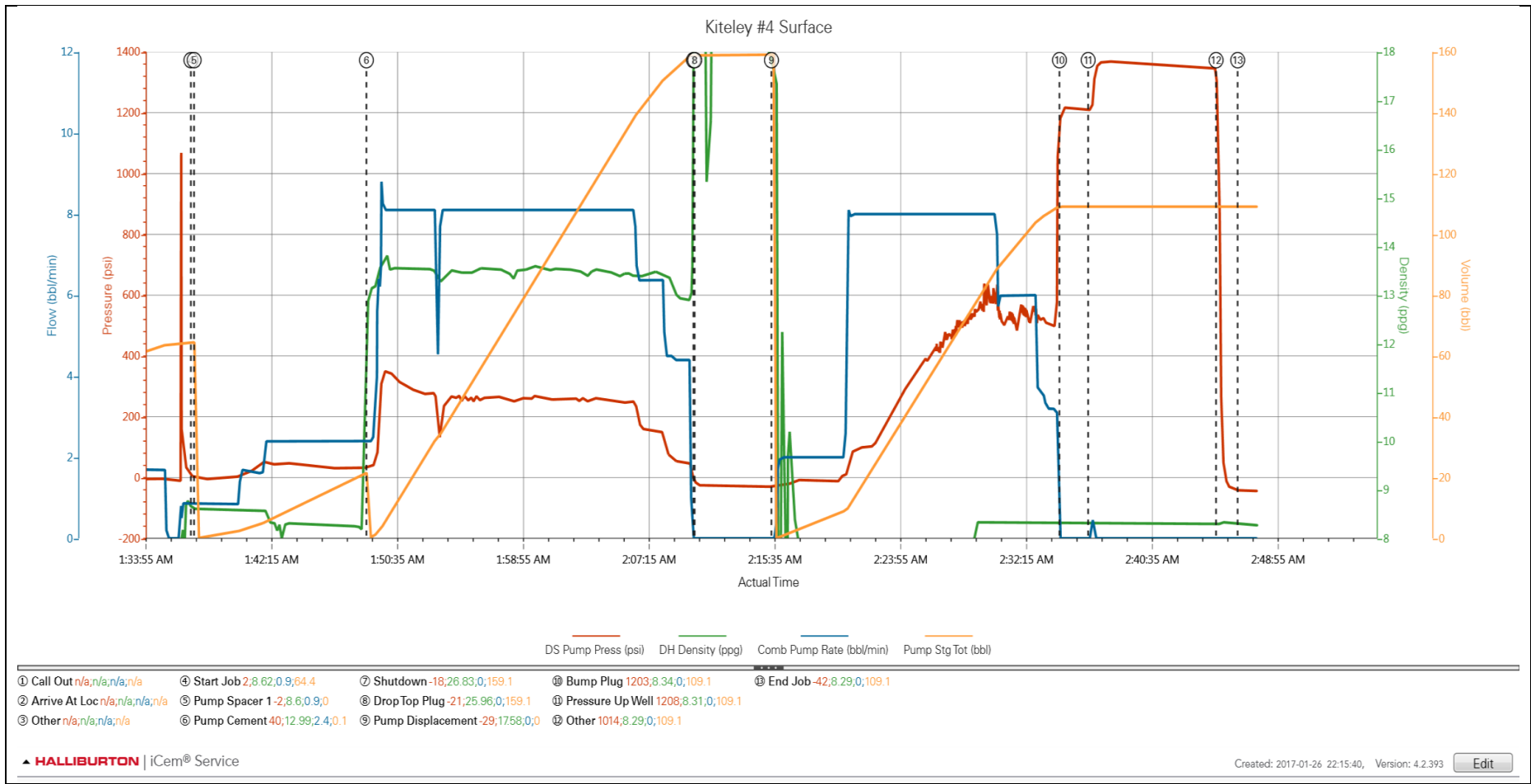
2.0 Real-Time Job Summary

2.1 Job Event Log

Type	Seq. No.	Activity	Graph Label	Date	Time	Source	PS Pump Press (psi)	DH Density (ppg)	Comb Pump Rate (bbl/min)	Pump Stg Tot (bbl)	Comments
Event	1	Call Out	Call Out	1/27/2017	17:00:00	USER					Call out from ARC hub
Event	2	Arrive At Loc	Arrive At Loc	1/27/2017	22:00:00	USER					Arrived on location met with company rep to discuss job process and concerns
Event	3	Other	Other	1/27/2017	22:10:10	USER					TD-1566 TP-1556 FC-1513 Mud8.33ppg OH-13.5 Casing 9.625 36#
Event	4	Start Job	Start Job	1/27/2017	01:37:03	COM4	31.00	8.62	0.80	64.40	Held pre-job safety meeting with all hands on location to discuss job process and hazards
Event	5	Pump Spacer 1	Pump Spacer 1	1/27/2017	01:37:16	COM4	27.00	8.60	0.90	64.60	Mixed 20bbl of fresh water with red tracer dye
Event	6	Pump Cement	Pump Cement	1/27/2017	01:48:40	COM4	88.00	12.93	2.40	21.80	Mixed 550sks or 170bbl of 13.5ppg Y-1.74 G/sk-9.02 Swiftcem at 8.0bpm 350psi
Event	7	Shutdown	Shutdown	1/27/2017	02:10:20	COM4	67.00	27.01	0.00	159.10	
Event	8	Drop Top Plug	Drop Top Plug	1/27/2017	02:10:25	COM4	61.00	26.50	0.00	159.10	Released plug witnessed by company rep
Event	9	Pump Displacement	Pump Displacement	1/27/2017	02:15:30	COM4	48.00	17.62	0.00	159.10	Pumped 117bbl of fresh water to displace cement
Event	10	Bump Plug	Bump Plug	1/27/2017	02:34:35	COM4	1328.00	8.34	0.00	109.10	Bumped plug 500psi over final pump pressure
Event	11	Pressure Up Well	Pressure Up Well	1/27/2017	02:36:29	USER	1341.00	8.31	0.00	109.10	Pressure up well for 10min at 1500psi
Event	12	Other	Other	1/27/2017	02:44:58	COM4	1190.00	8.29	0.00	109.10	Released pressure back to pump truck to check floats. floats held good 1.0bbl back
Event	13	End Job	End Job	1/27/2017	02:46:24	COM4	86.00	8.29	0.00	109.10	45bbl of cement back to surface

3.0 Attachments

3.1 Case 1-Custom Results.png



3.2 Case 1-Custom Results (1).png

