

OPERATOR: **Extraction Oil & Gas**

WELL NAME: **Kiteley 4**

FIELD NAME: DJ Basin - Wattenberg

DRILLING RIG: Cyclone 37

API #: 05-123-43926

LAT/LONG: 40.20801, -105.015301

SURFACE HOLE: NWSW S21-T3N-R68W, 1468' FSL, 559' FWL

BOTTOM HOLE: S21-T3N-R68W, 1800' FSL, 460' FEL

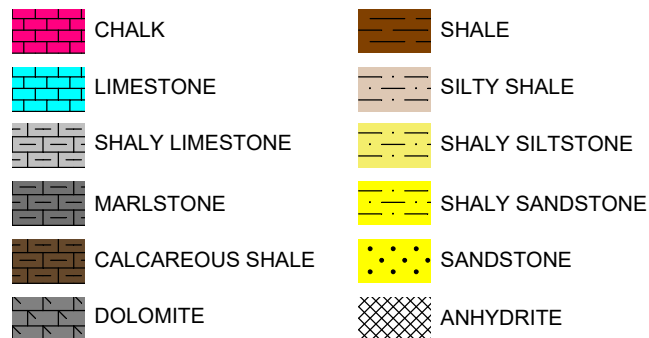


Earth Science Agency, LLC

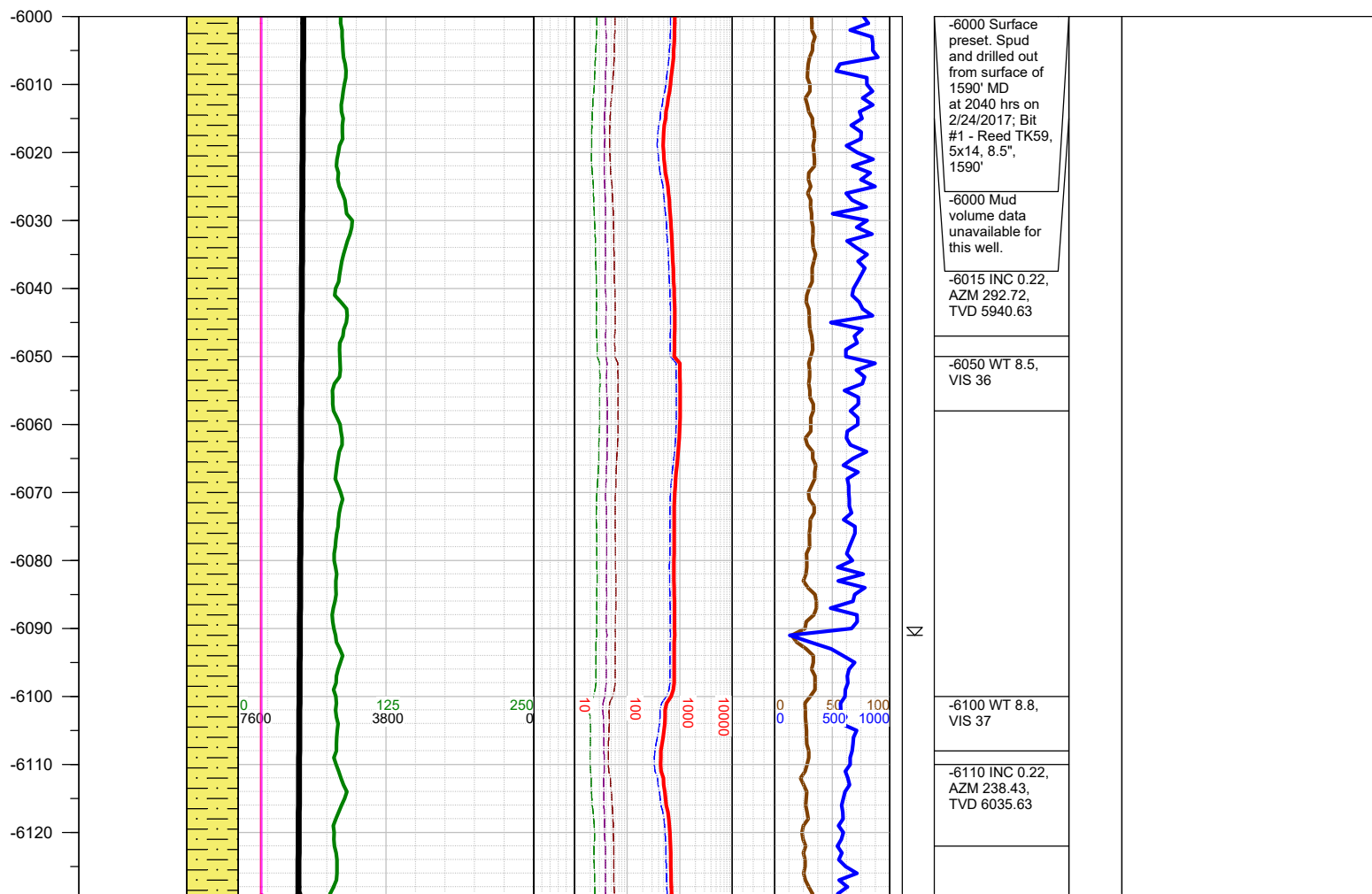
COUNTY: Weld
STATE: Colorado
GROUND ELEVATION: 4991'
KELLY BUSHING: 5019'
DRILLING FLUID: OBM
TVD VS. MD: 7201' / 11715'
SPUD DATE: February 24, 2017
TD DATE: February 26, 2017

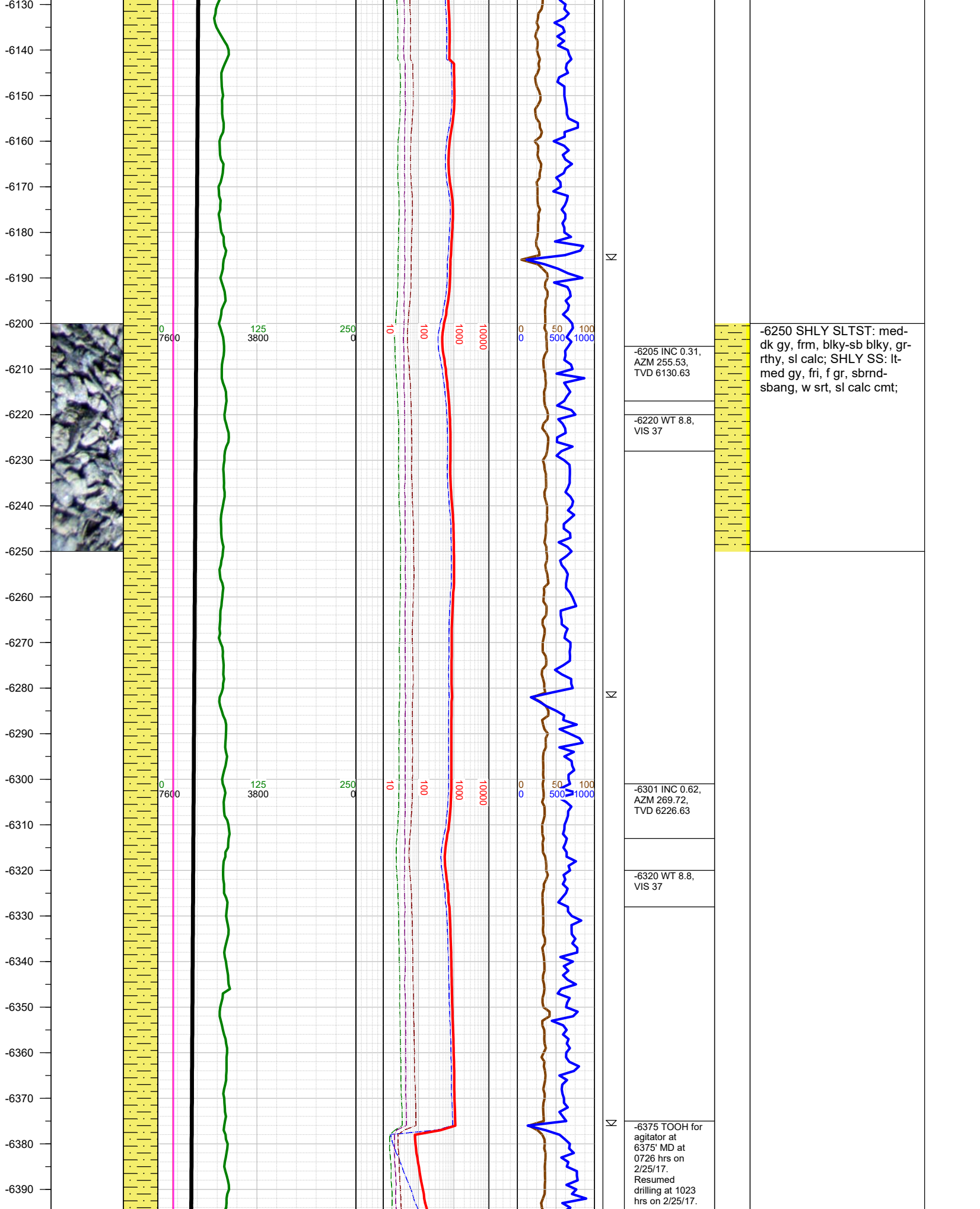
DEPTHS LOGGED: 6000' - 11715'
DATES LOGGED: February 25, 2017 - February 26, 2017
GEOLOGISTS: Blue Spikes, James Brooks
SCALE: 5" = 100'

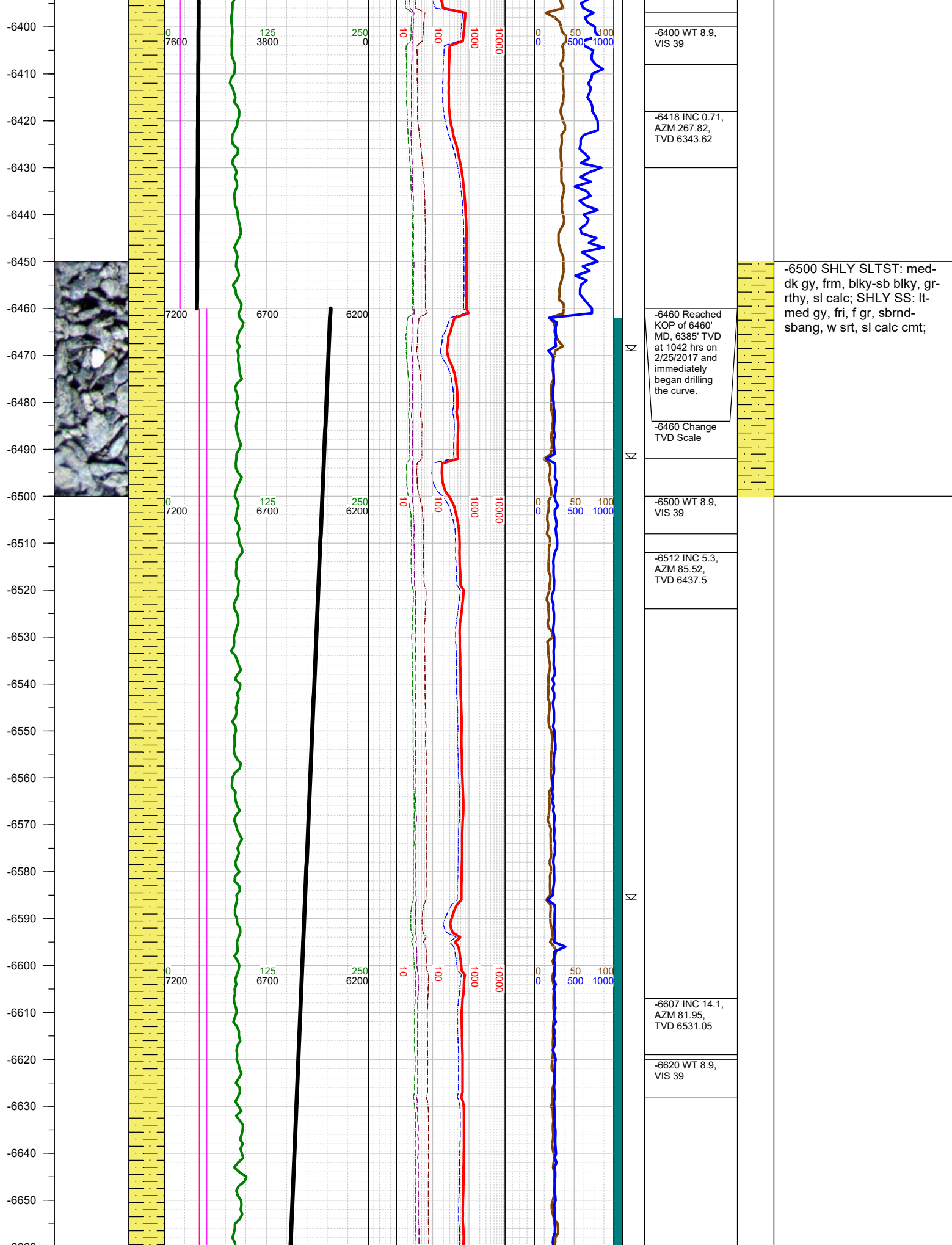
LEGEND



FORMATION \approx CONNECTION Δ MIDNIGHT NEW BIT GAS SHOW FAULT







-6400 WT 8.9,
VIS 39

-6418 INC 0.71,
AZM 267.82,
TVD 6343.62

-6460 Reached
KOP of 6460'
MD, 6385' TVD
at 1042 hrs on
2/25/2017 and
immediately
began drilling
the curve.

-6460 Change
TVD Scale

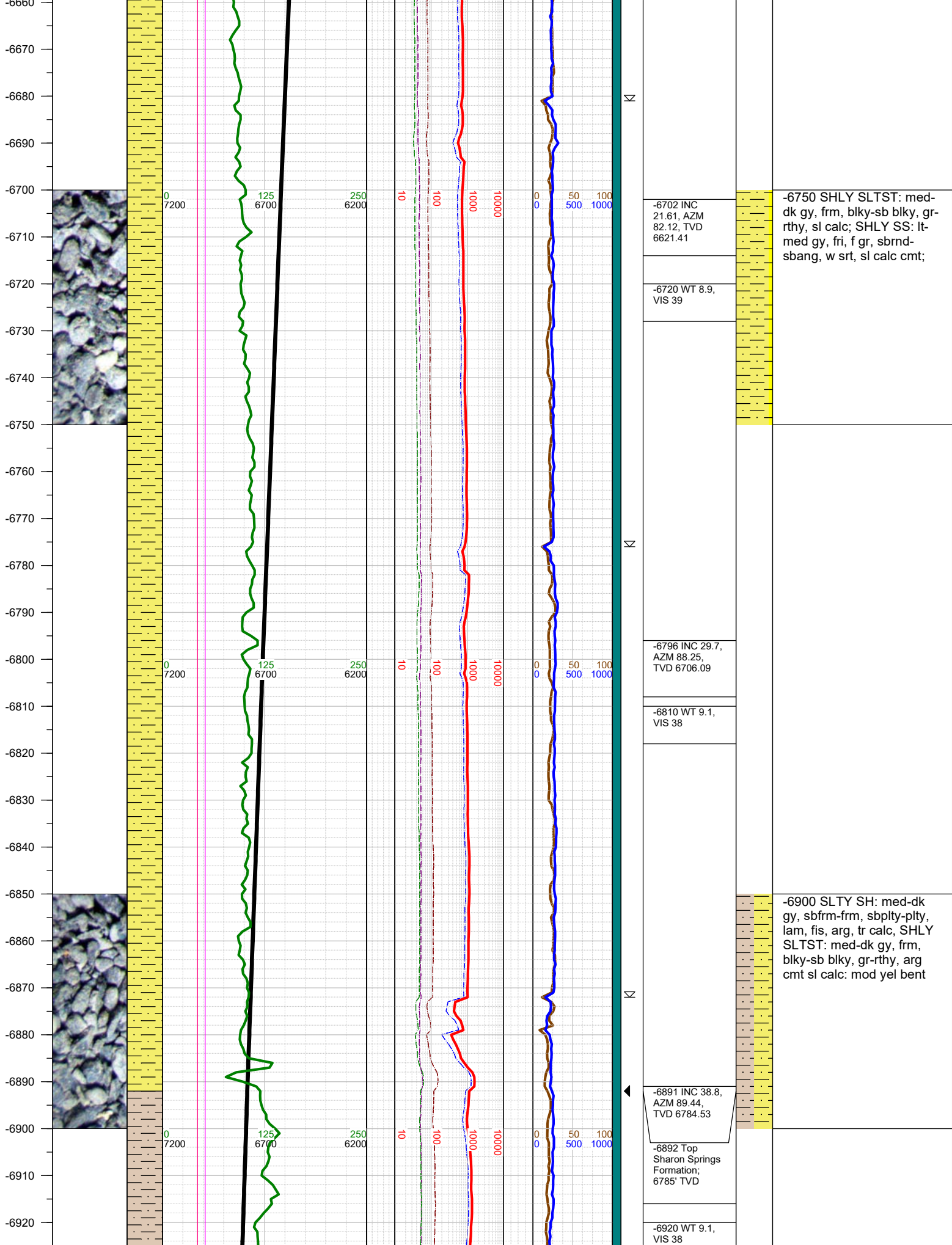
-6500 WT 8.9,
VIS 39

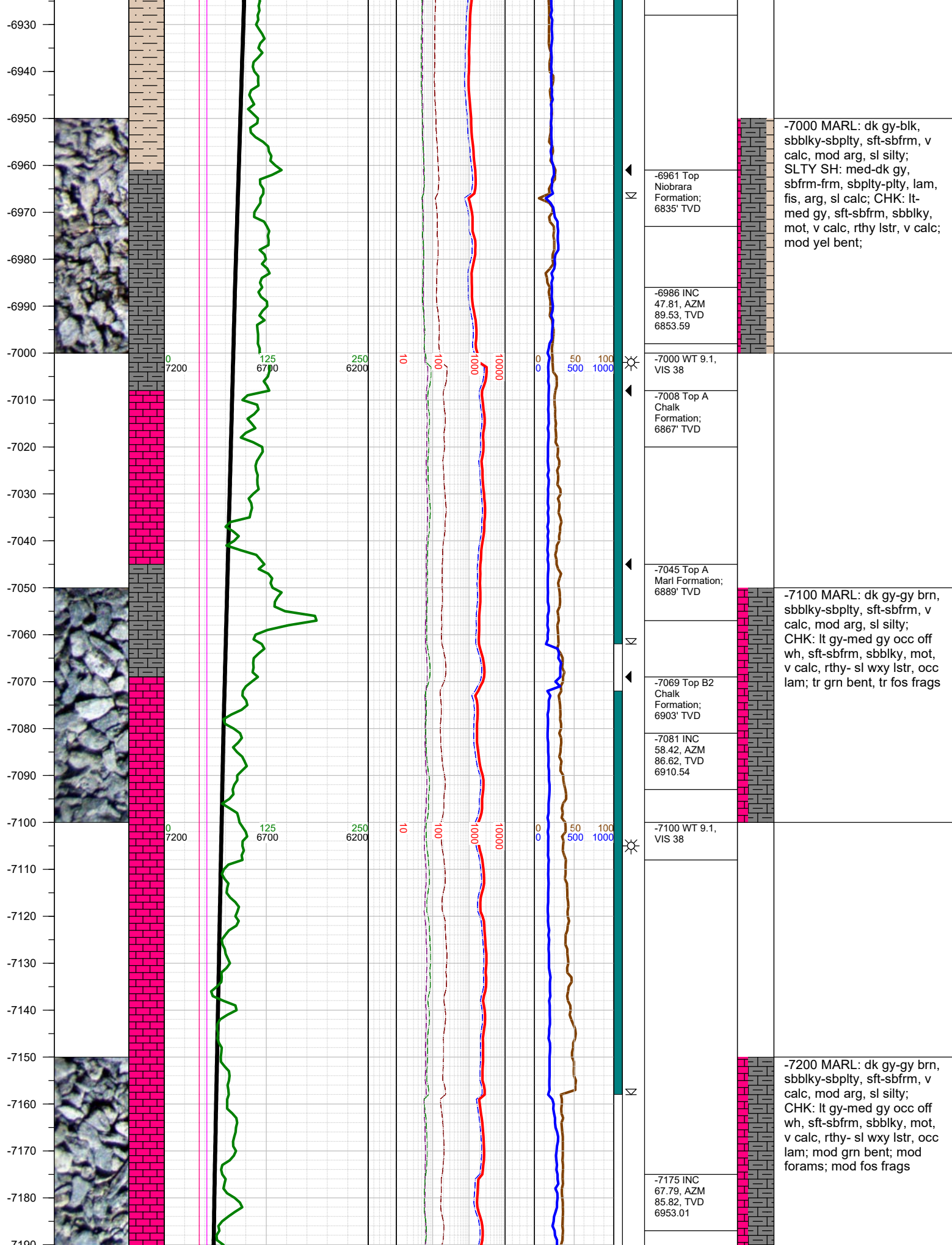
-6512 INC 5.3,
AZM 85.52,
TVD 6437.5

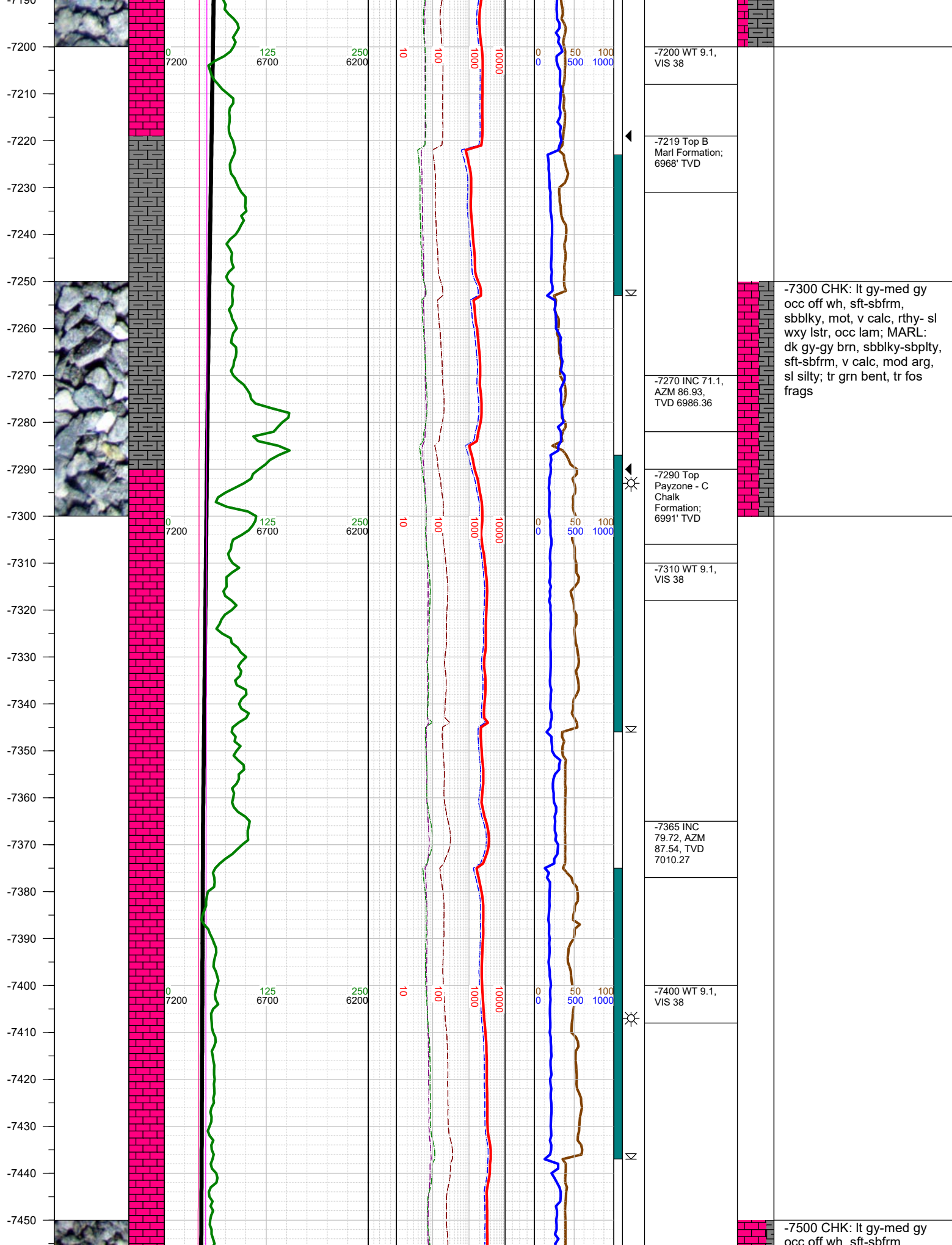
-6607 INC 14.1,
AZM 81.95,
TVD 6531.05

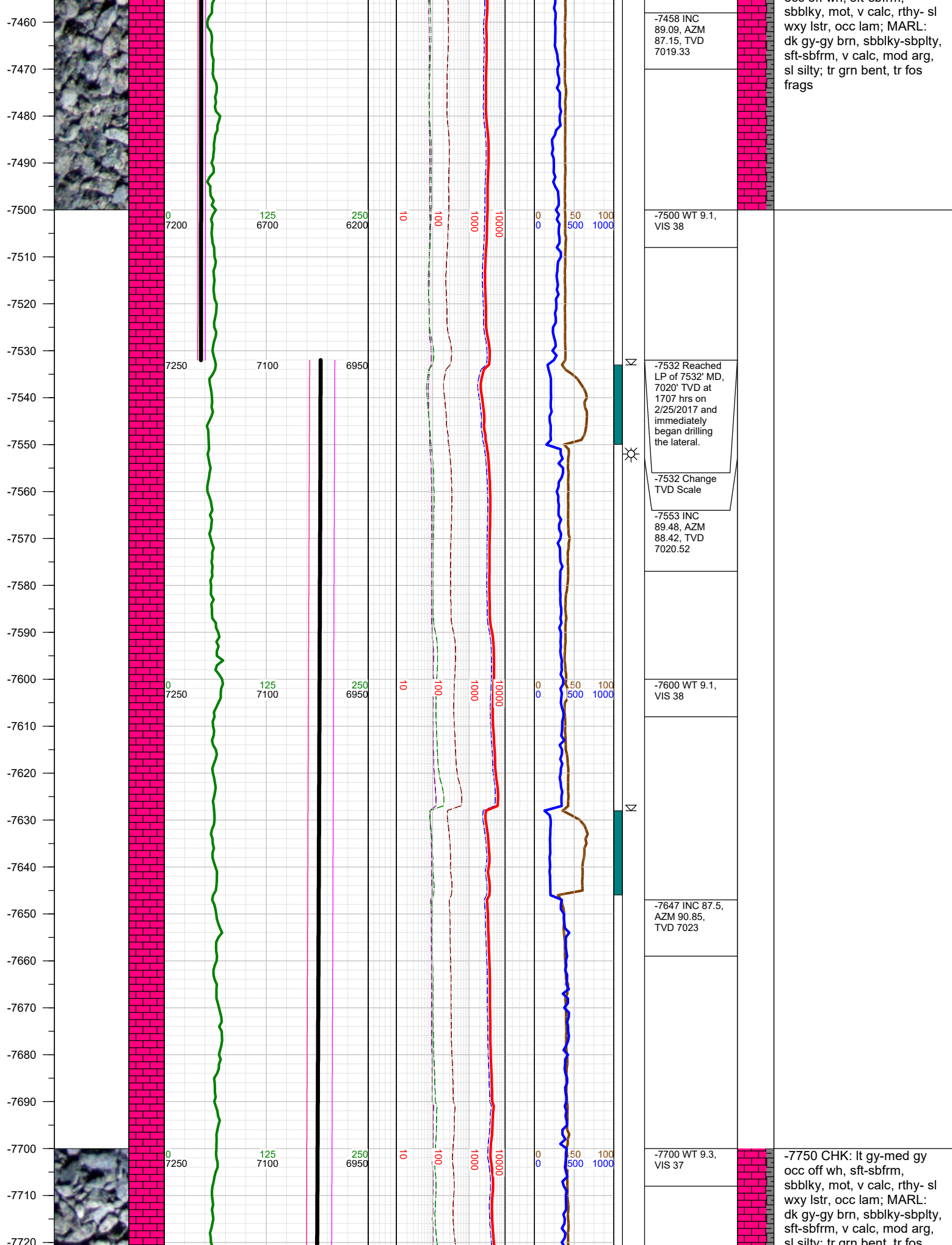
-6620 WT 8.9,
VIS 39

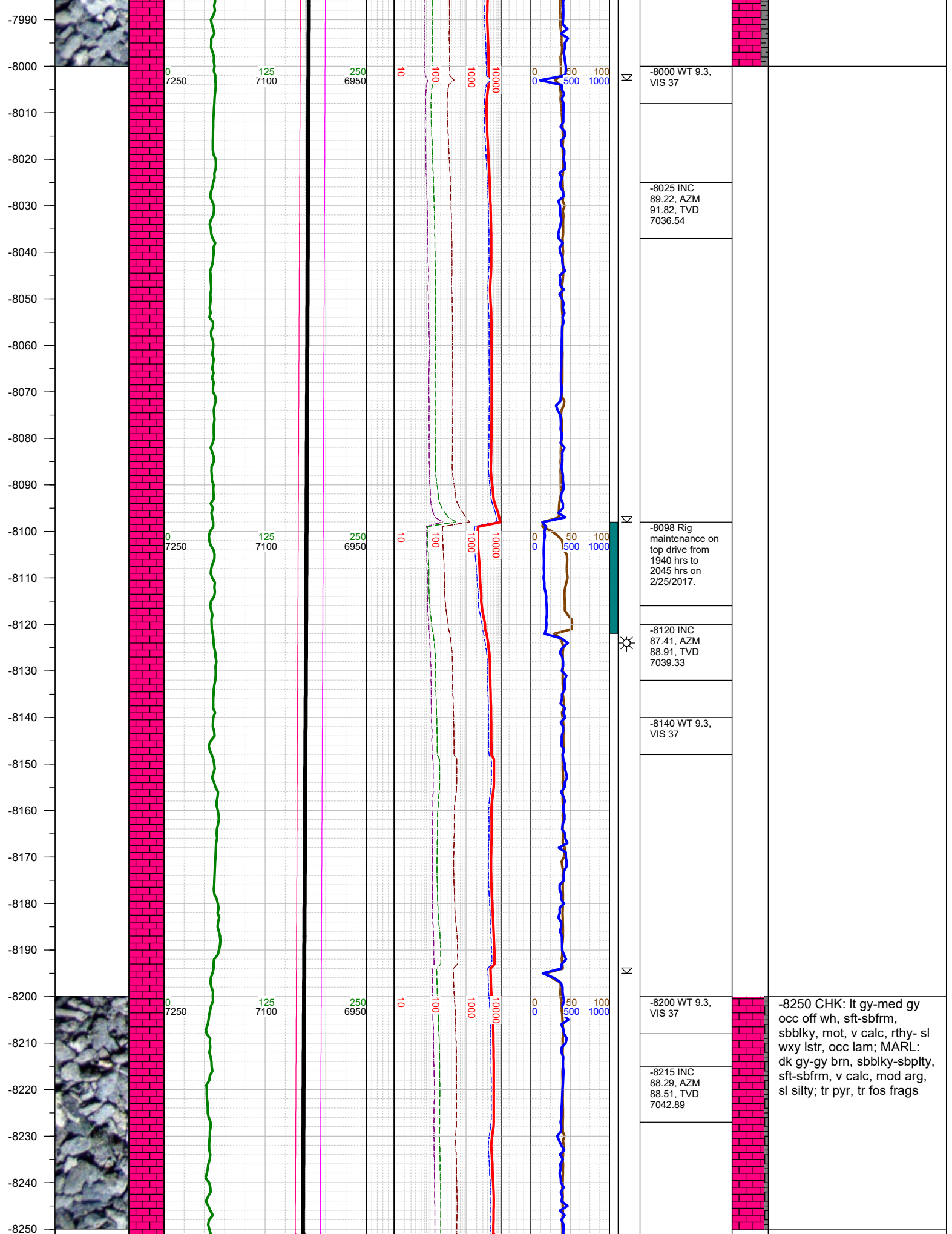
-6500 SHLY SLTST: med-
dk gy, frm, blk-y-sb blk-y, gr-
rthy, sl calc; SHLY SS: lt-
med gy, fri, f gr, sbrnd-
sbang, w srt, sl calc cmt;

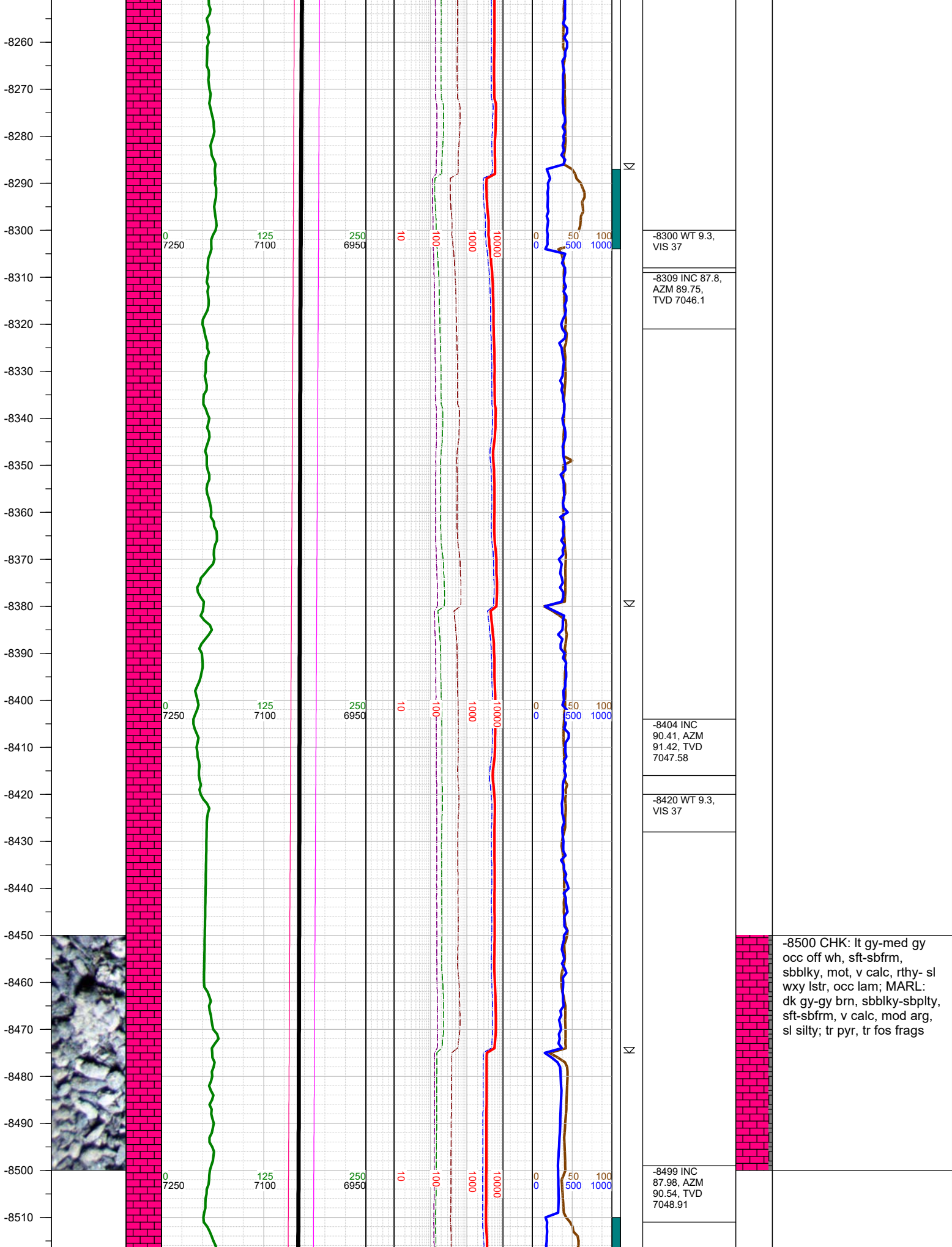


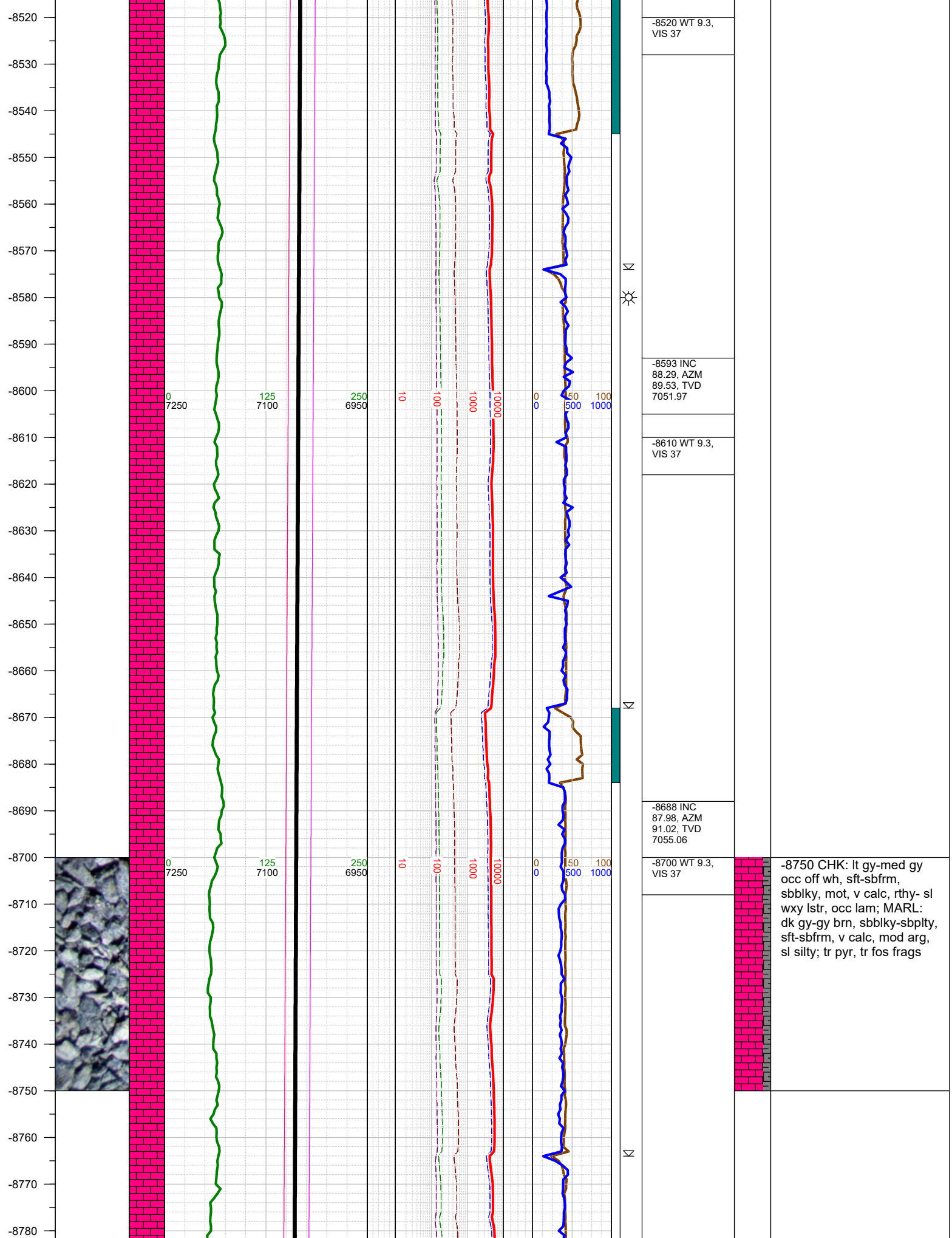


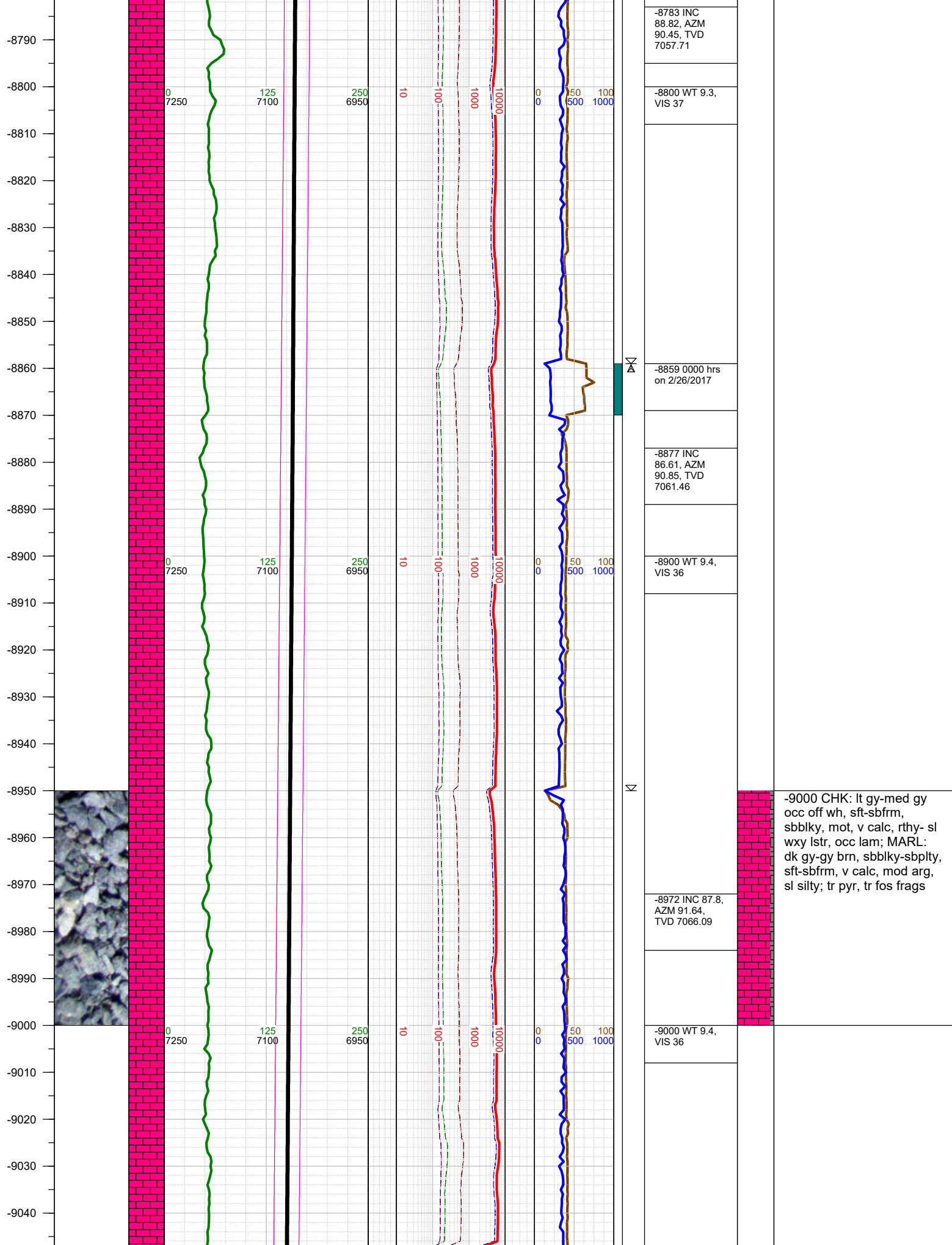


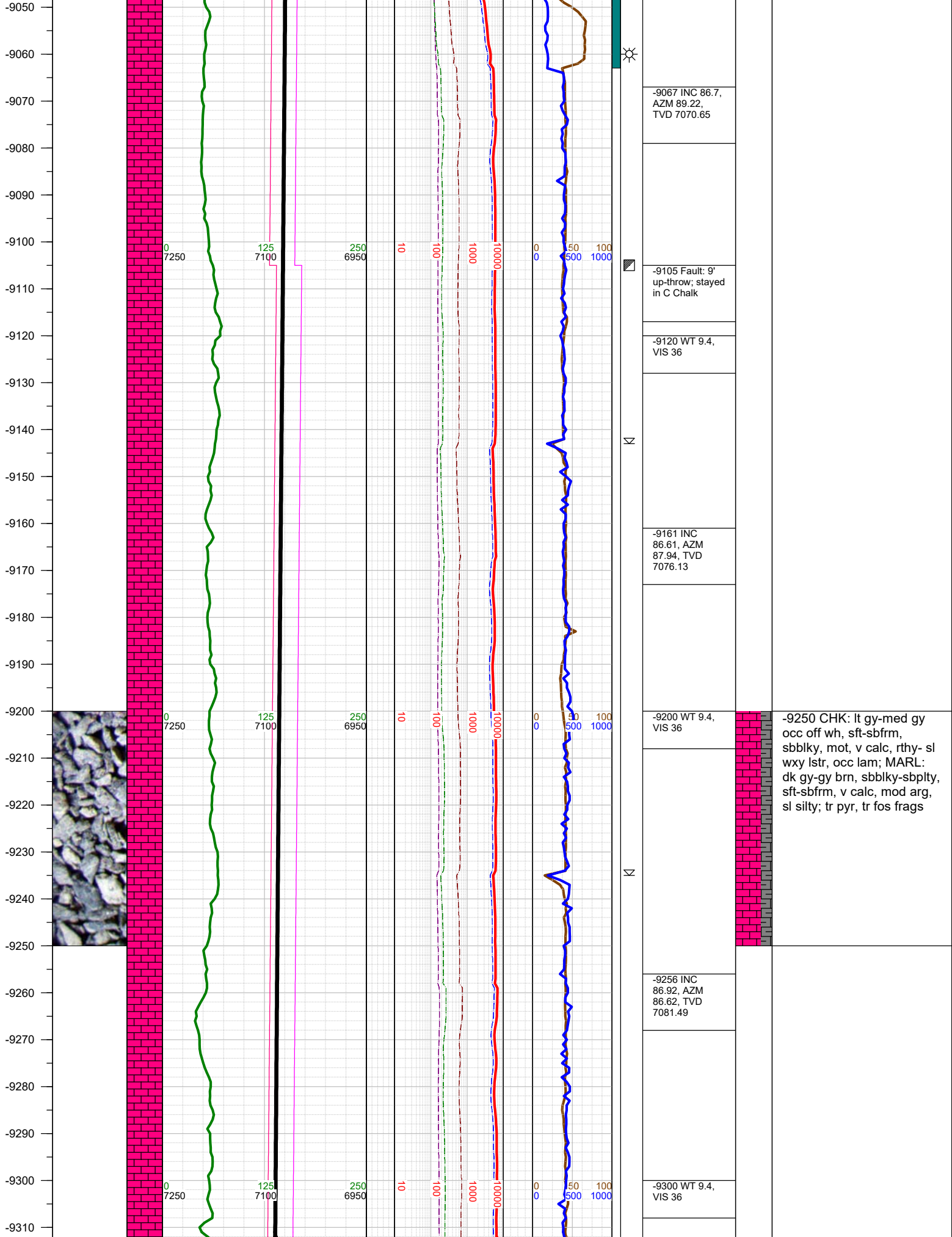


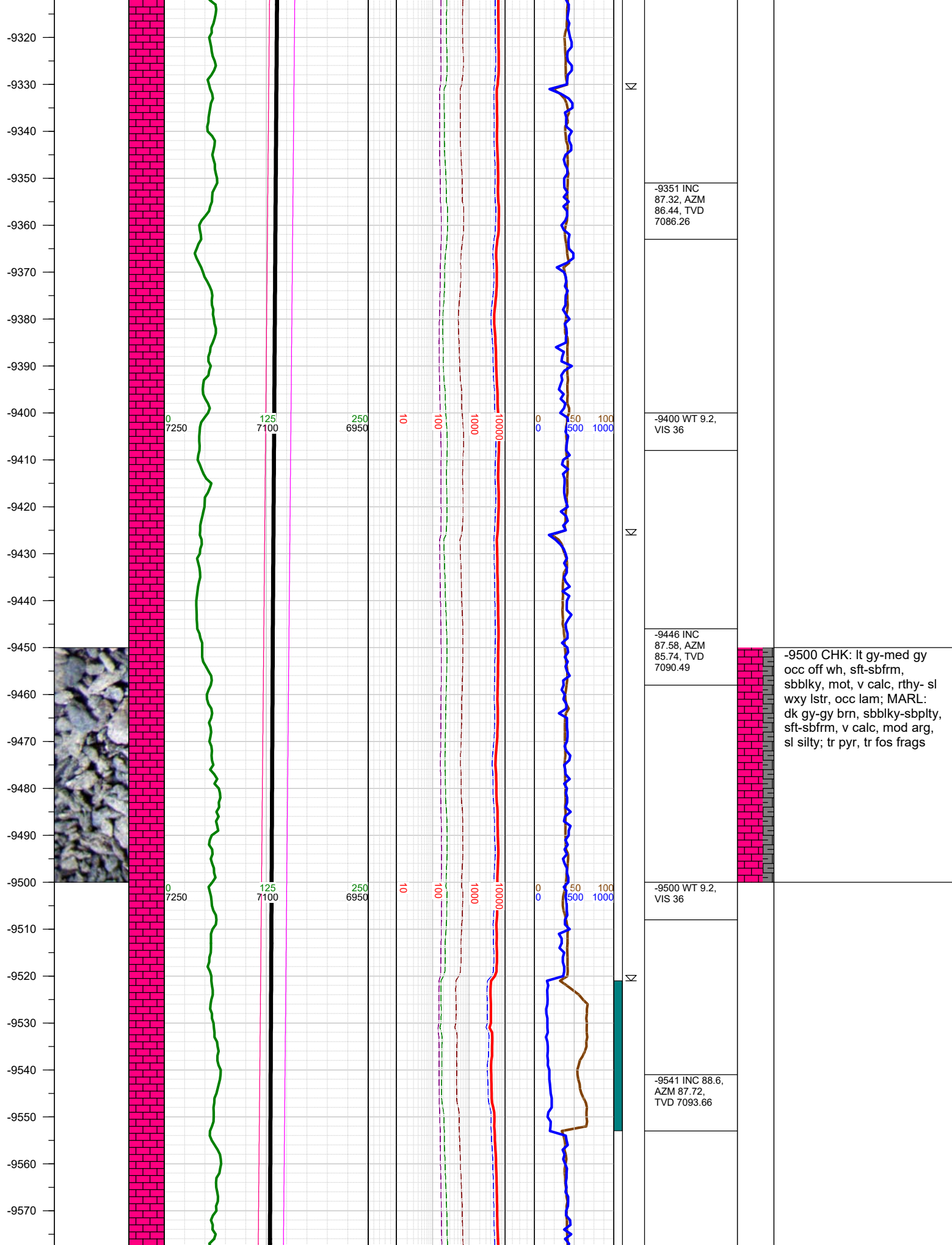


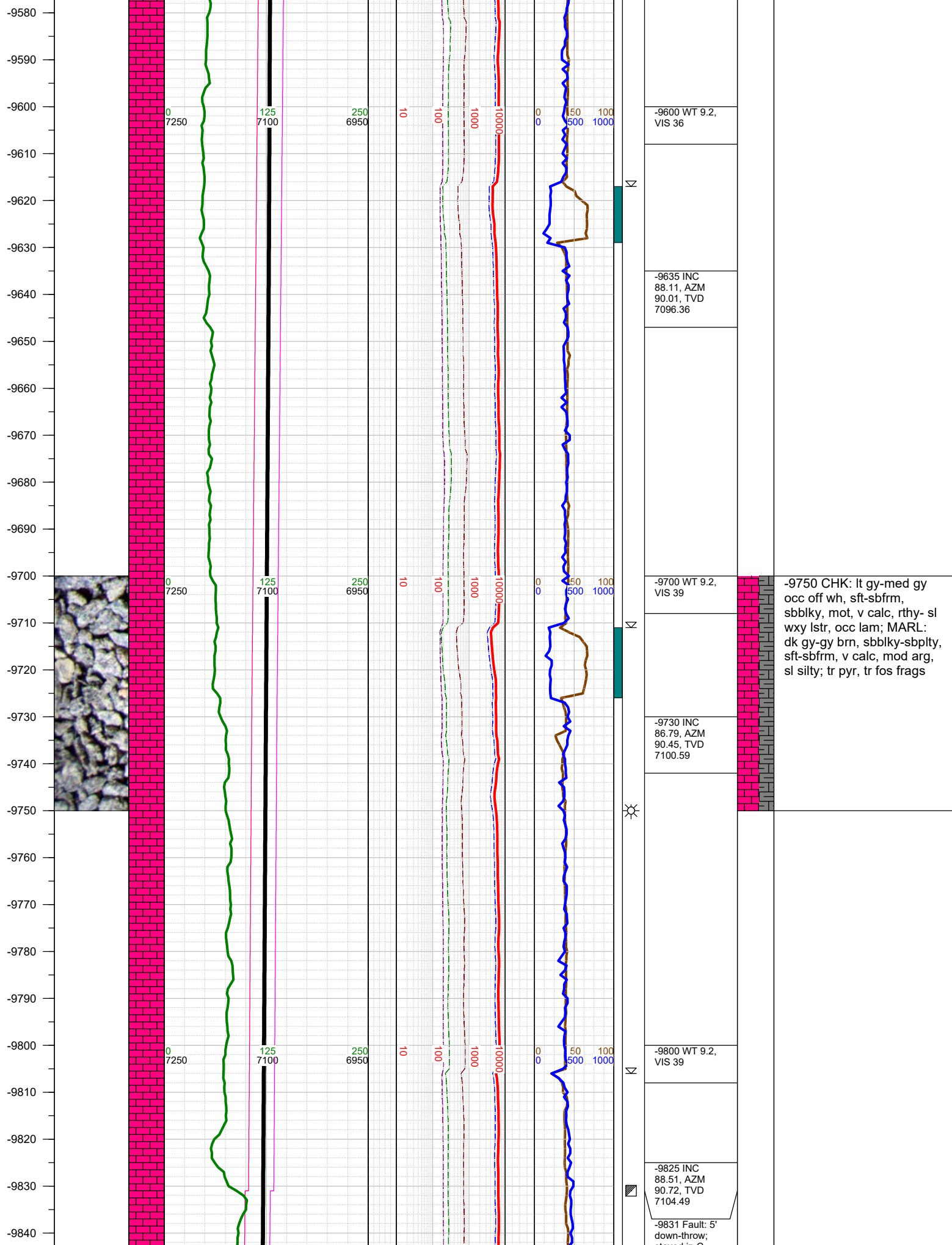


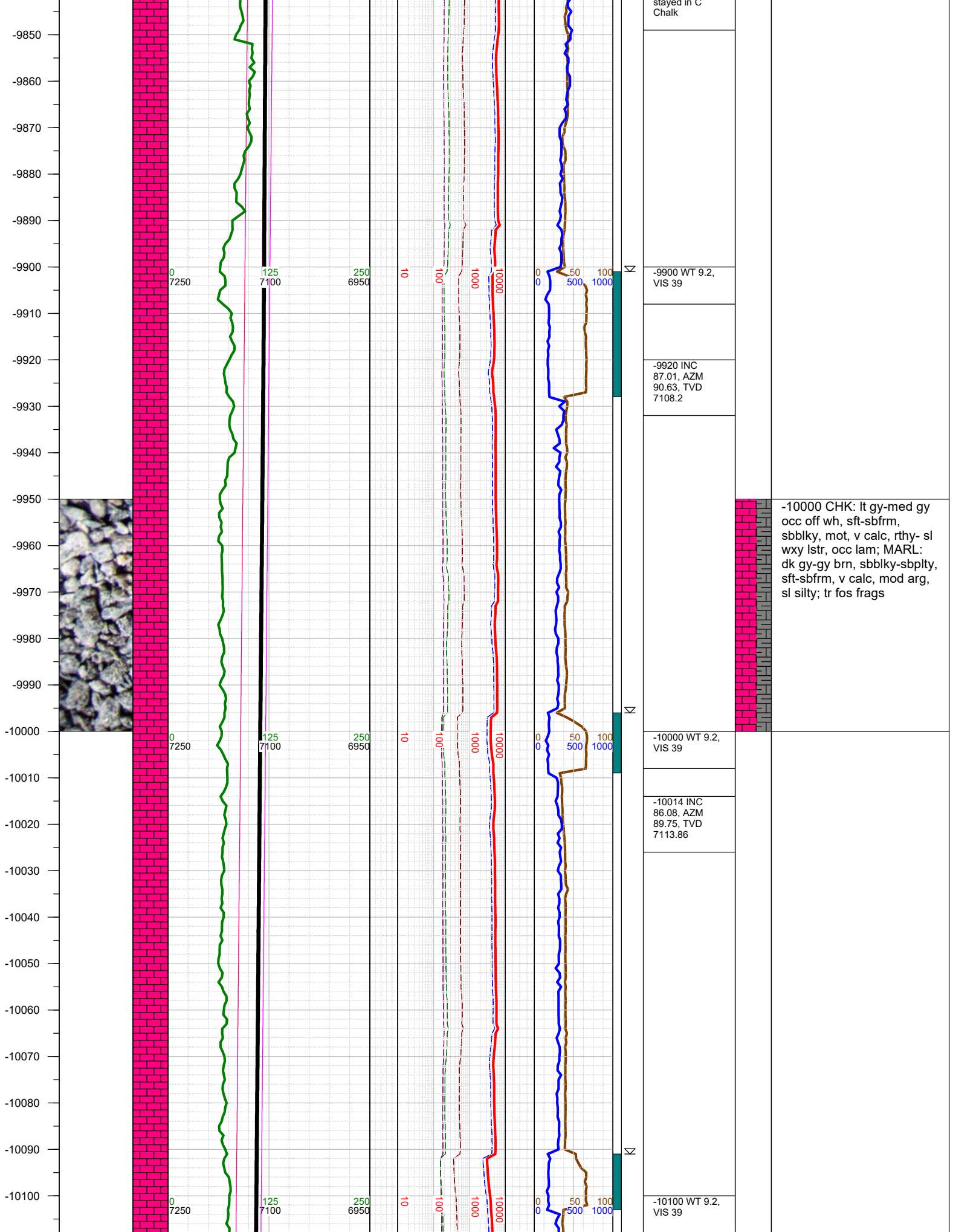




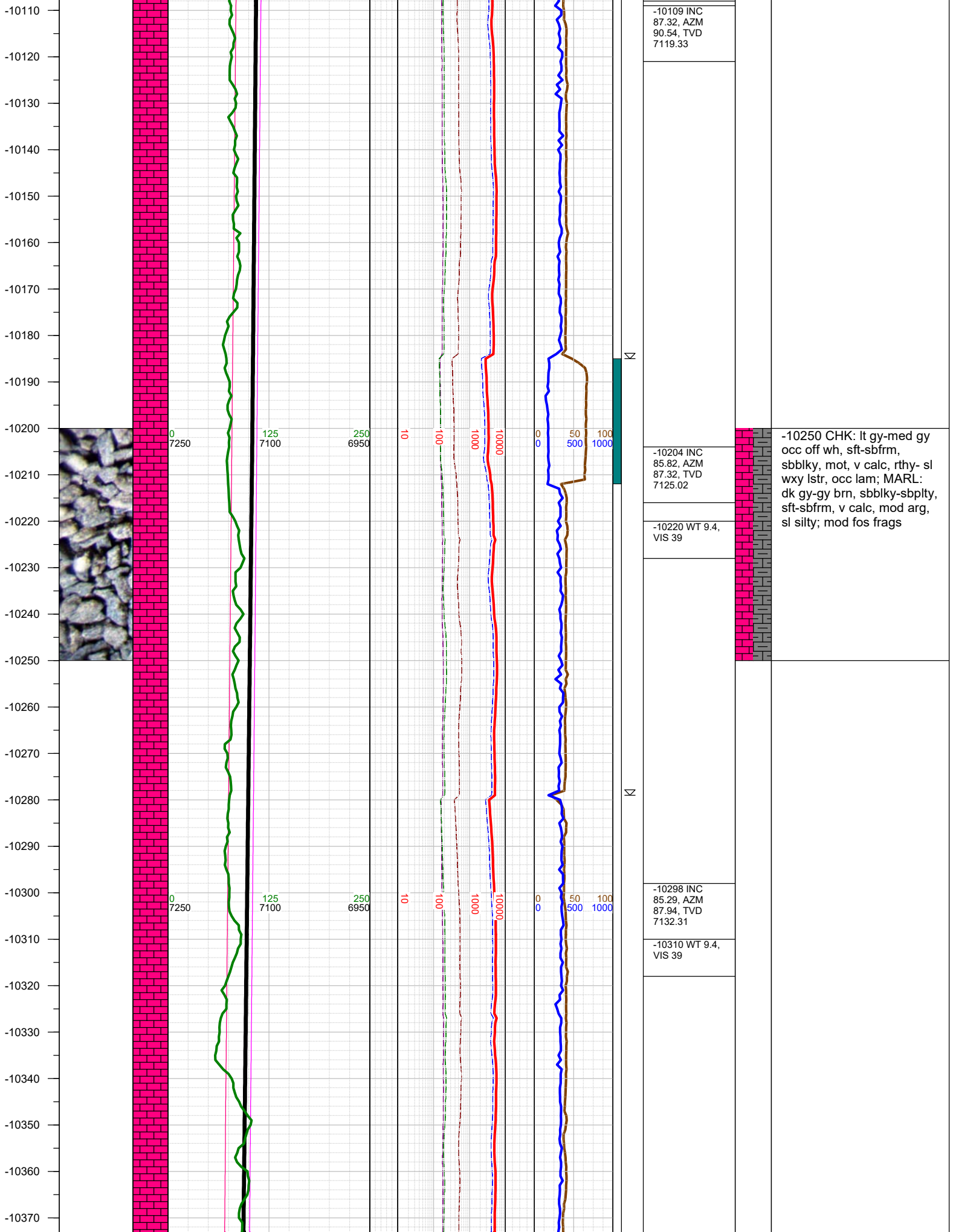








-10000 CHK: lt gy-med gy
occ off wh, sft-sbfrm,
sbblky, mot, v calc, rthy- sl
wxy lstr, occ lam; MARL:
dk gy-gy brn, sbblky-sbplty,
sft-sbfrm, v calc, mod arg,
sl silty; tr fos frags



-10109 INC
87.32, AZM
90.54, TVD
7119.33

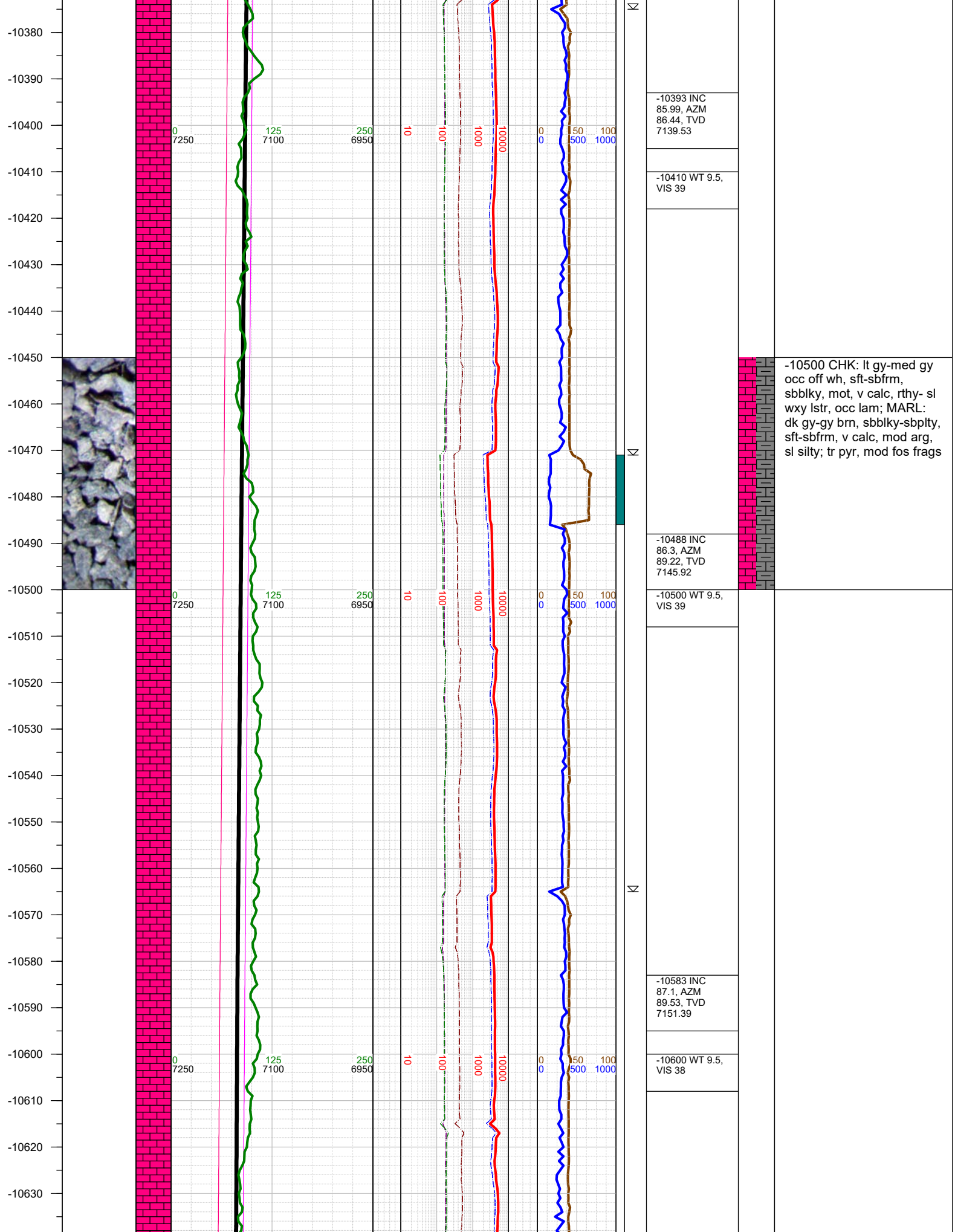
-10204 INC
85.82, AZM
87.32, TVD
7125.02

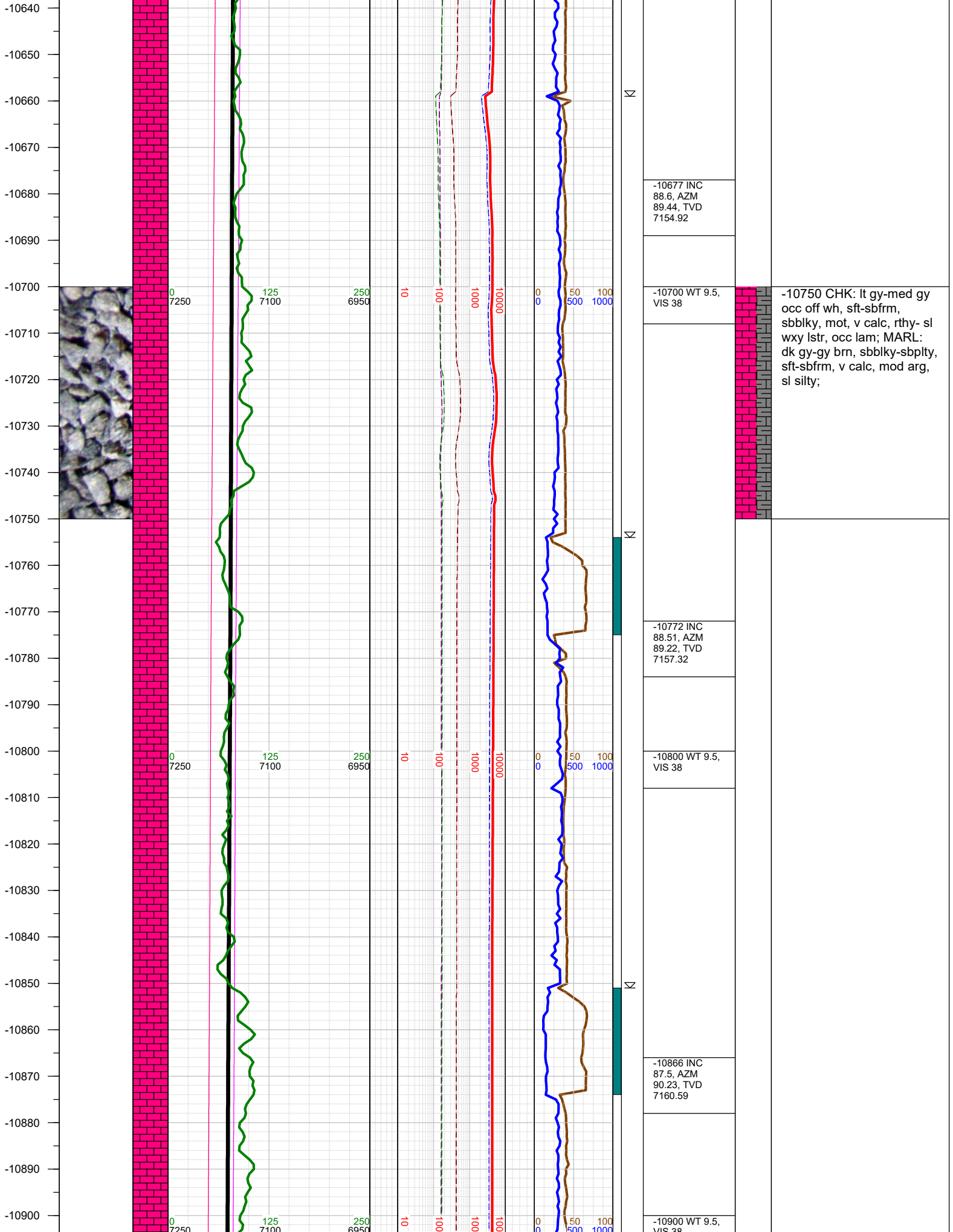
-10220 WT 9.4,
VIS 39

-10298 INC
85.29, AZM
87.94, TVD
7132.31

-10310 WT 9.4,
VIS 39

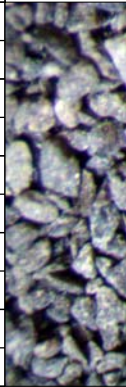
-10250 CHK: lt gy-med gy
occ off wh, sft-sbfrm,
sbblky, mot, v calc, rthy- sl
wxy lstr, occ lam; MARL:
dk gy-gy brn, sbblky-sbplty,
sft-sbfrm, v calc, mod arg,
sl silty; mod fos frags





-10750 CHK: lt gy-med gy
occ off wh, sft-sbfrm,
sbblky, mot, v calc, rthy- sl
wxy lstr, occ lam; MARL:
dk gy-gy brn, sbblky-sbplty,
sft-sbfrm, v calc, mod arg,
sl silty;

-10910
-10920
-10930
-10940
-10950
-10960
-10970
-10980
-10990
-11000
-11010
-11020
-11030
-11040
-11050
-11060
-11070
-11080
-11090
-11100
-11110
-11120
-11130
-11140
-11150
-11160



0
7250

125
7100

250
6950

10

100

1000

10000

0
0

50

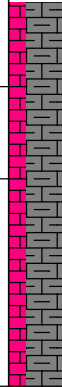
100

500

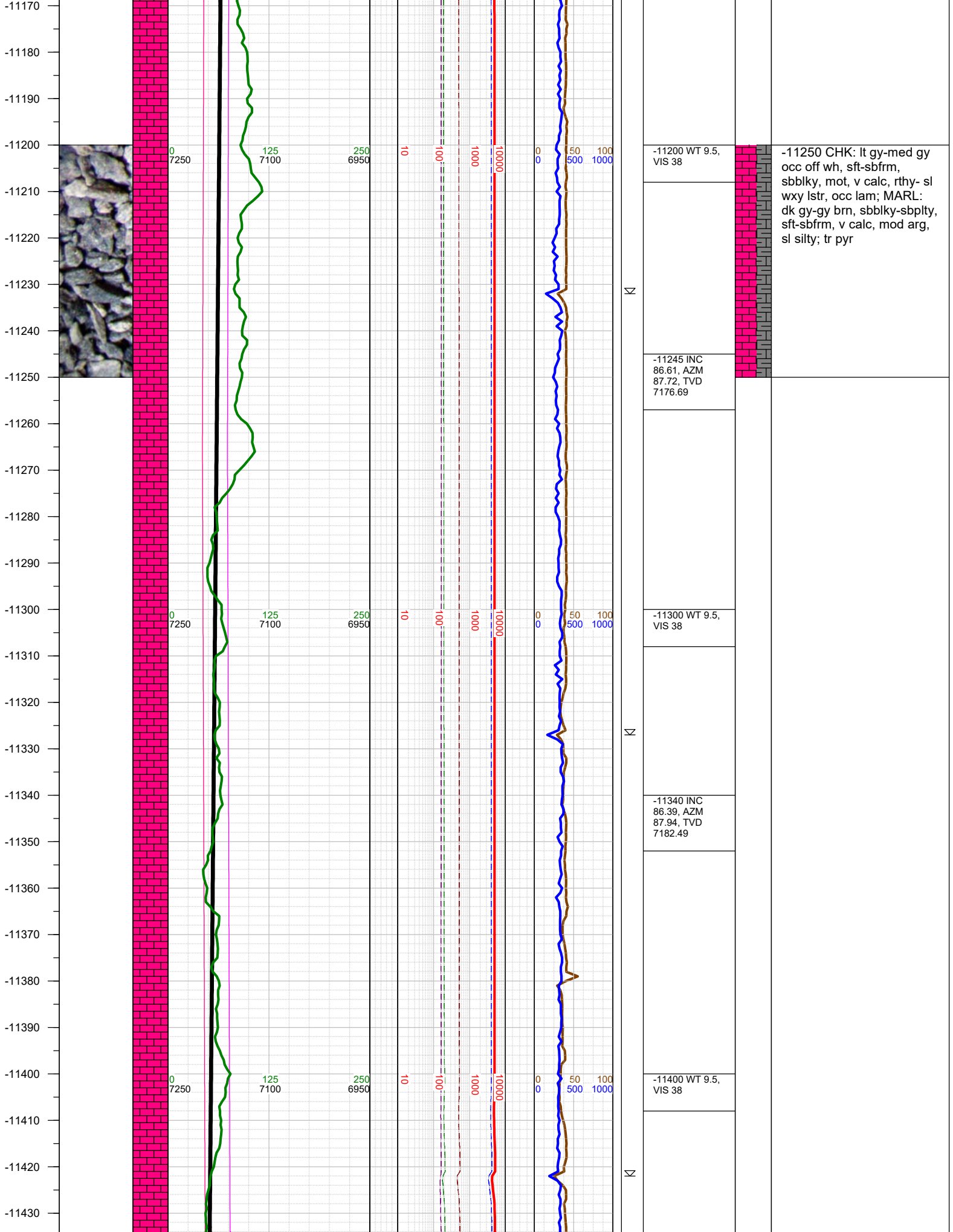
1000



VIS 38
-10961 INC 89.31, AZM 90.72, TVD 7163.23
-11000 WT 9.5, VIS 38
-11056 INC 87.41, AZM 90.23, TVD 7165.95
-11100 WT 9.5, VIS 38
-11150 INC 86.48, AZM 87.94, TVD 7170.96



-11000 MARL: dk gy-gy
brn, sbblky-sbplty, sft-
sbfrm, v calc, mod arg, sl
silty; CHK: lt gy-med gy
occ off wh, sft-sbfrm,
sbblky, mot, v calc, rthy- sl
wxy lstr, occ lam; tr pyr, tr
fos frags



-11200 WT 9.5,
VIS 38

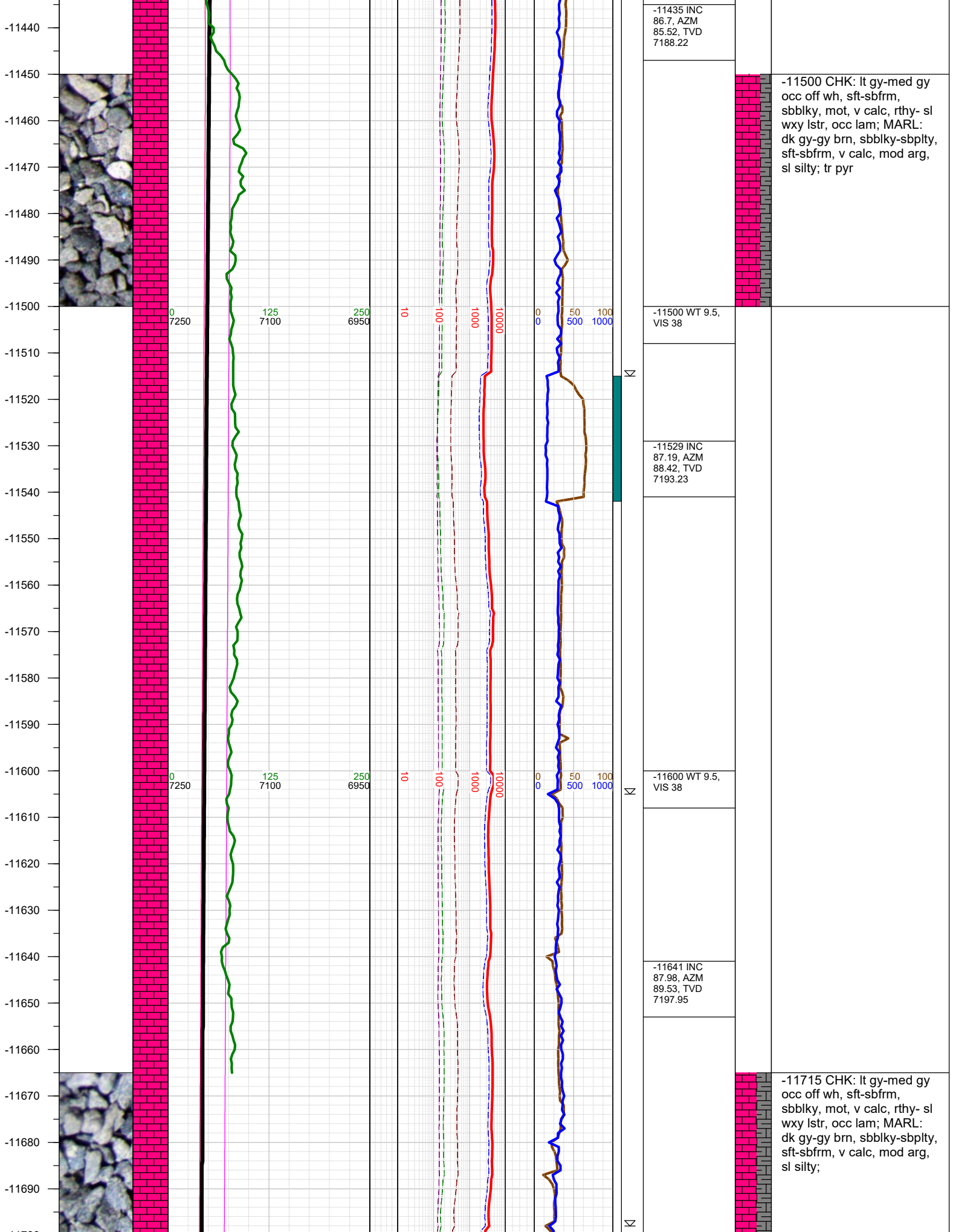
-11250 CHK: lt gy-med gy
occ off wh, sft-sbfrm,
sbbly, mot, v calc, rthy- sl
wxy lstr, occ lam; MARL:
dk gy-gy brn, sbbly-sbply,
sft-sbfrm, v calc, mod arg,
sl silty; tr pyr

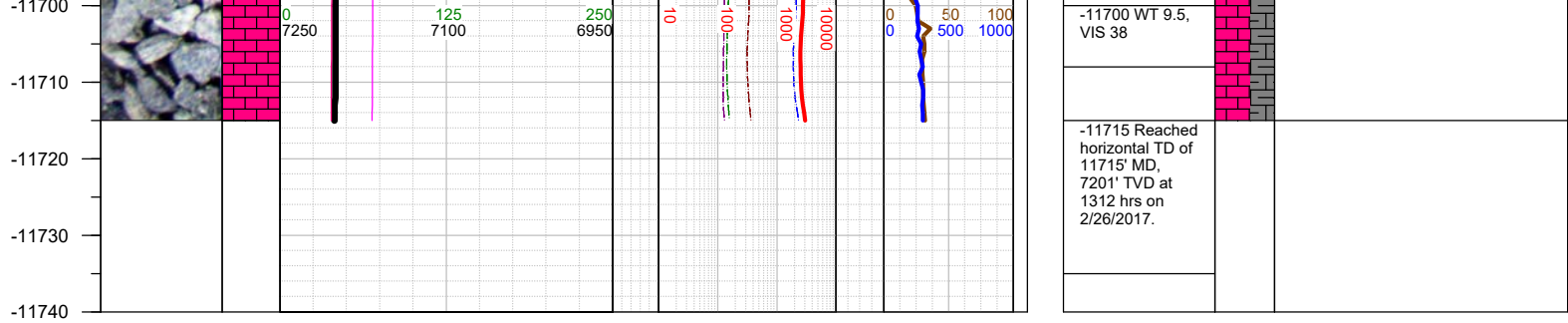
-11245 INC
86.61, AZM
87.72, TVD
7176.69

-11300 WT 9.5,
VIS 38

-11340 INC
86.39, AZM
87.94, TVD
7182.49

-11400 WT 9.5,
VIS 38





TOTAL DEPTH = 11715'

Thank you for using Earth Science Agency