



RADIAL BOND LOG
W/GAMMA RAY
CASING COLLARS

Company BP AMERICA		Company BP AMERICA					
Well SOUTHERN UTE TRIBAL BK 2		Well SOUTHERN UTE TRIBAL BK 2					
Field IGNACIO		Field IGNACIO					
County LA PLATA		County LA PLATA					
State CO		State CO					
Location: API # : 05-067-09969		Other Services					
SEC 29 TWP 33N RGE 7W		N/A					
Permanent Datum GROUND LEVEL Elevation 6397		Elevation					
Log Measured From KB 11		K.B. 6408					
Drilling Measured From KELLY BUSHING		D.F. 6407					
		G.L. 6397					
Date 2-15-17	Run Number 1						
Depth Driller 3755	Depth Logger 3666						
Bottom Logged Interval 3666	Top Log Interval SURFACE						
Open Hole Size N/A	Type Fluid WATER						
Density / Viscosity 8.4	Max. Recorded Temp. N/A						
Estimated Cement Top SEE LOG	Time Well Ready 7:00						
Time Logger on Bottom 8:00	Equipment Number 118						
Location FARMINGTON	Recorded By SWEAT						
Witnessed By WHITMEN							
Borehole Record		Tubing Record					
Run Number	Bit	From	To	Size	Weight	From	To
Casing Record	Size			Wgt/Ft		Top	Bottom
Surface String	8.625			24		SURFACE	388
Prot. String	5.5 J-65			15.5		SURFACE	3666
Production String							
Liner							

<<< Fold Here >>>

All interpretations are opinions based on inferences from electrical or other measurements and we cannot and do not guarantee the accuracy or correctness of any interpretation, and we shall not, except in the case of gross or willful negligence on our part, be liable or responsible for any loss, costs, damages, or expenses incurred or sustained by anyone resulting from any interpretation made by any of our officers, agents or employees. These interpretations are also subject to our general terms and conditions set out in our current Price Schedule.

Comments

THANK YOU FOR USING BASIN WELL LOGGING

Sensor	Offset (ft)	Schematic	Description	Length (ft)	O.D. (in)	Weight (lb)
			CENT-PTS275	2.83	2.75	

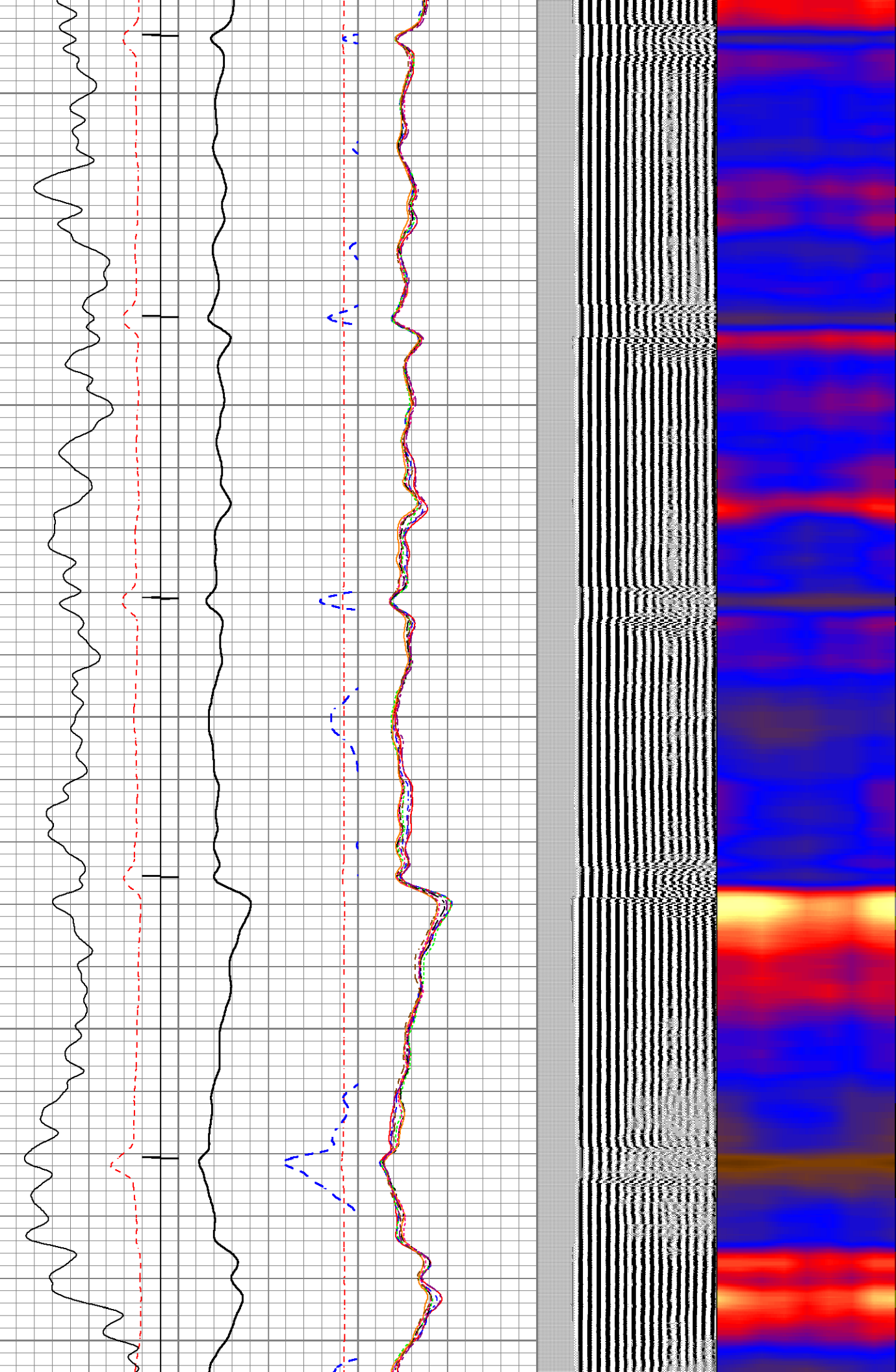


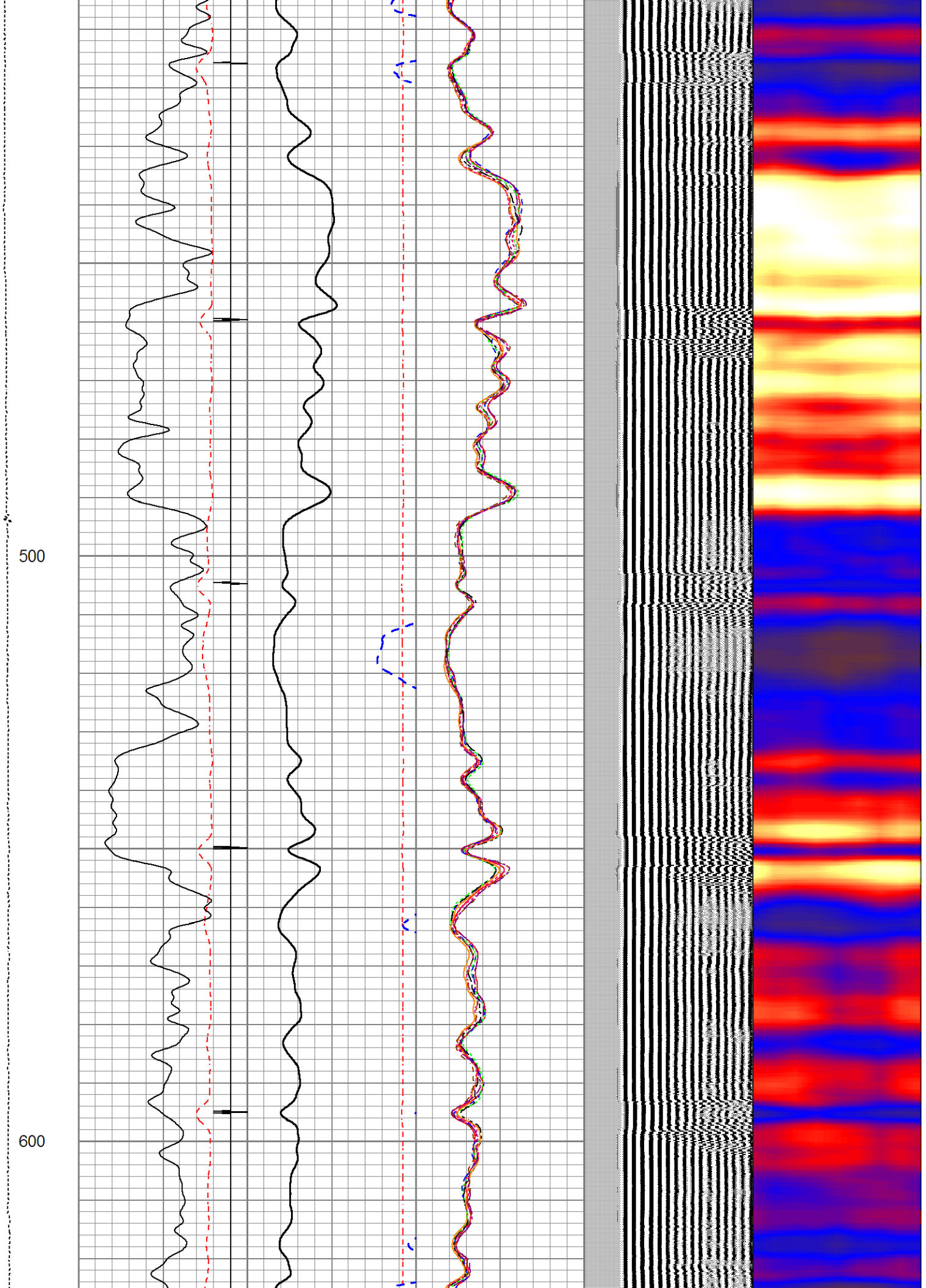
Database File	e:\tribal bk 2\southern ute tribal bk 2.db
Dataset Pathname	pass9.4
Presentation Format	rcblsect
Dataset Creation	Wed Feb 15 12:42:17 2017
Charted by	Depth in Feet scaled 1:240

200

300

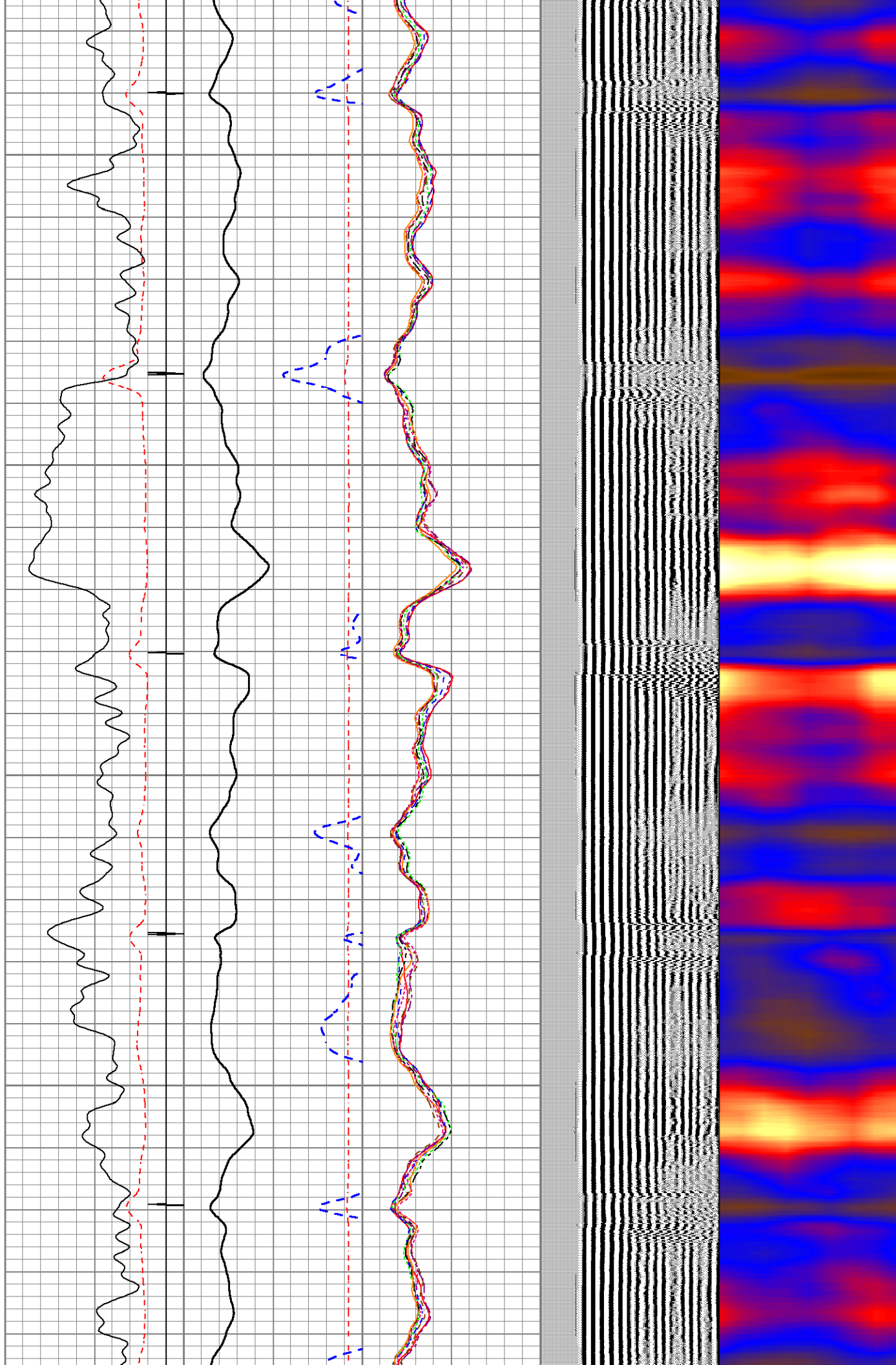
400





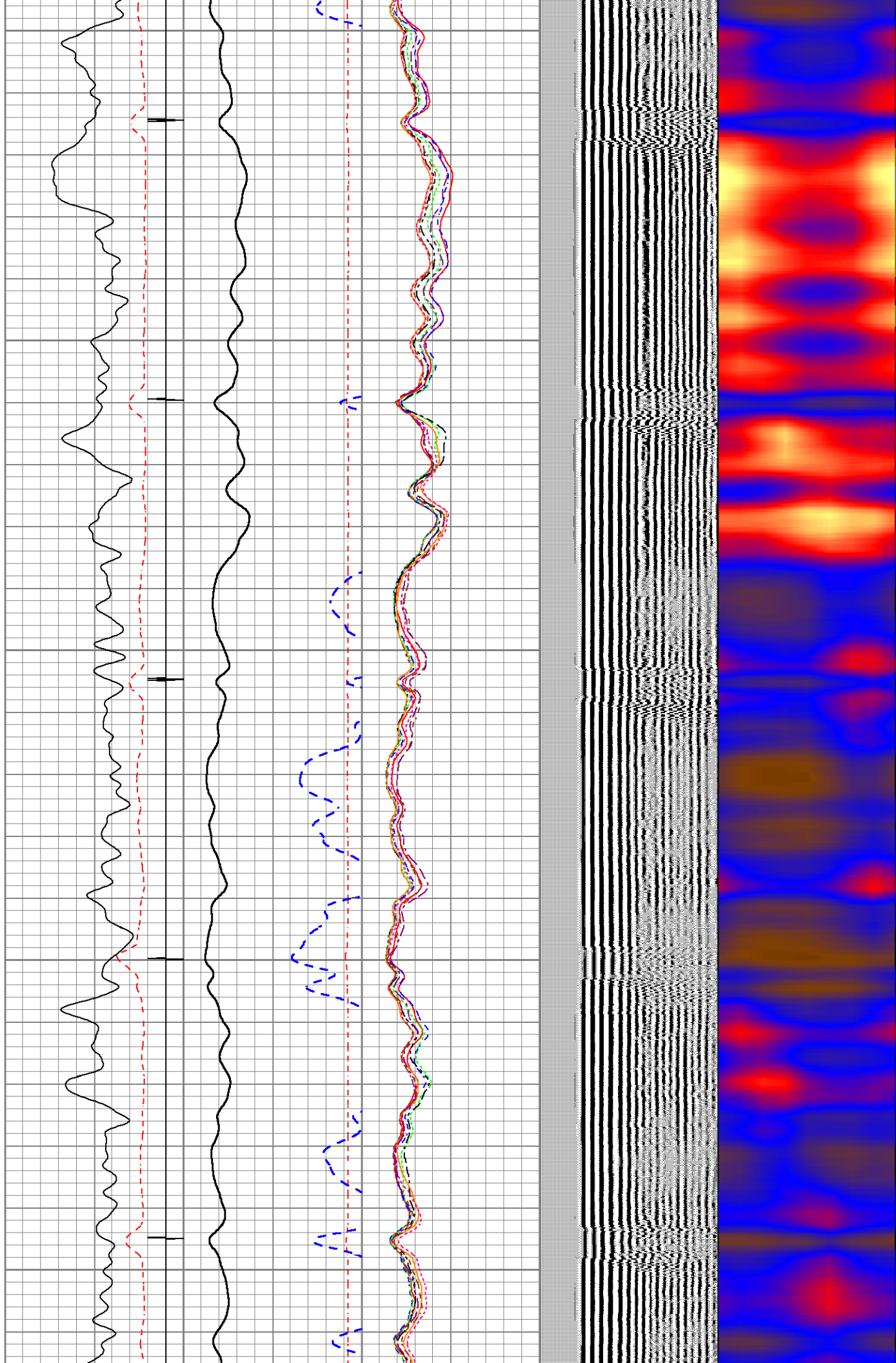
700

800



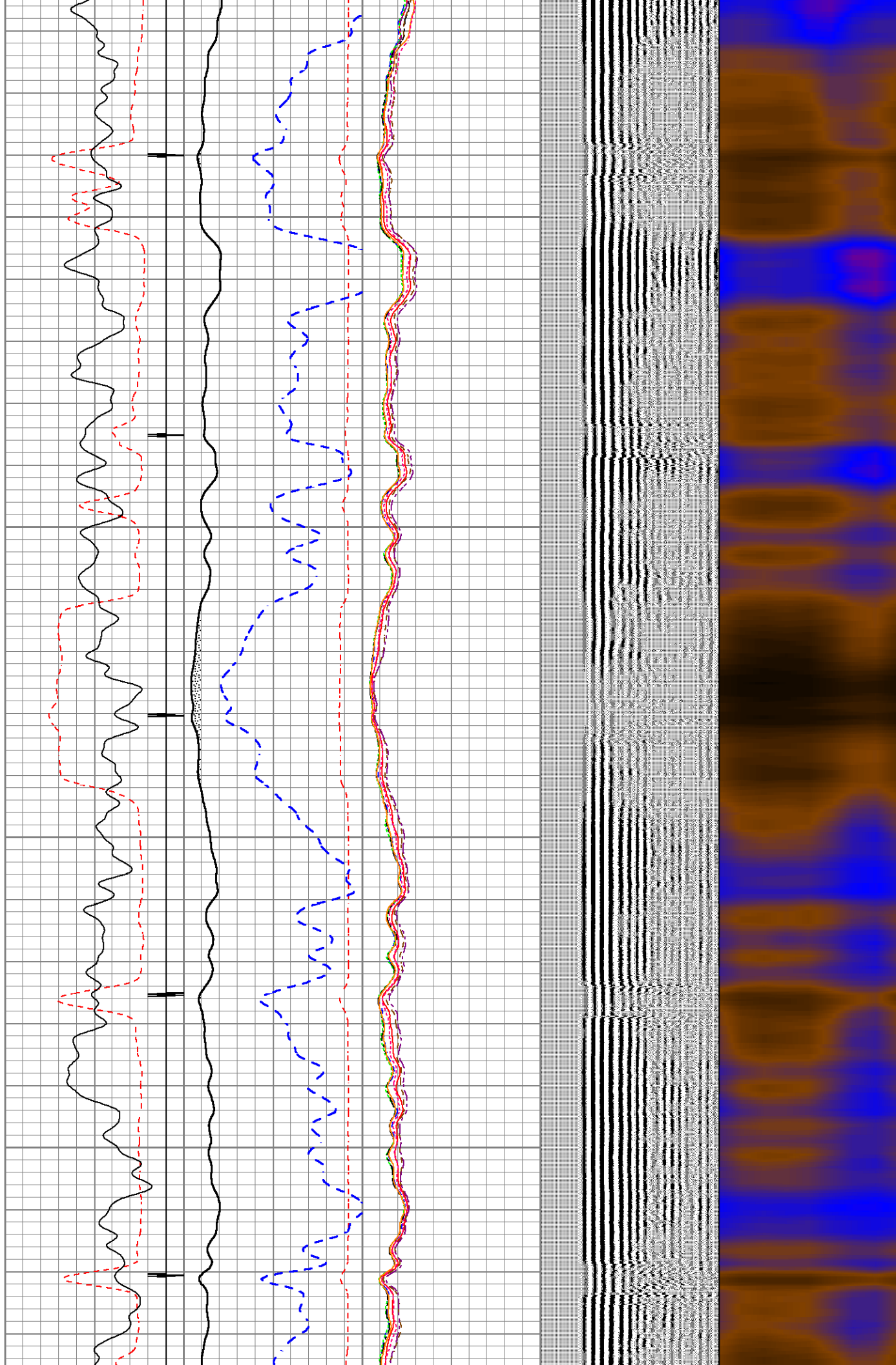
900

1000



1100

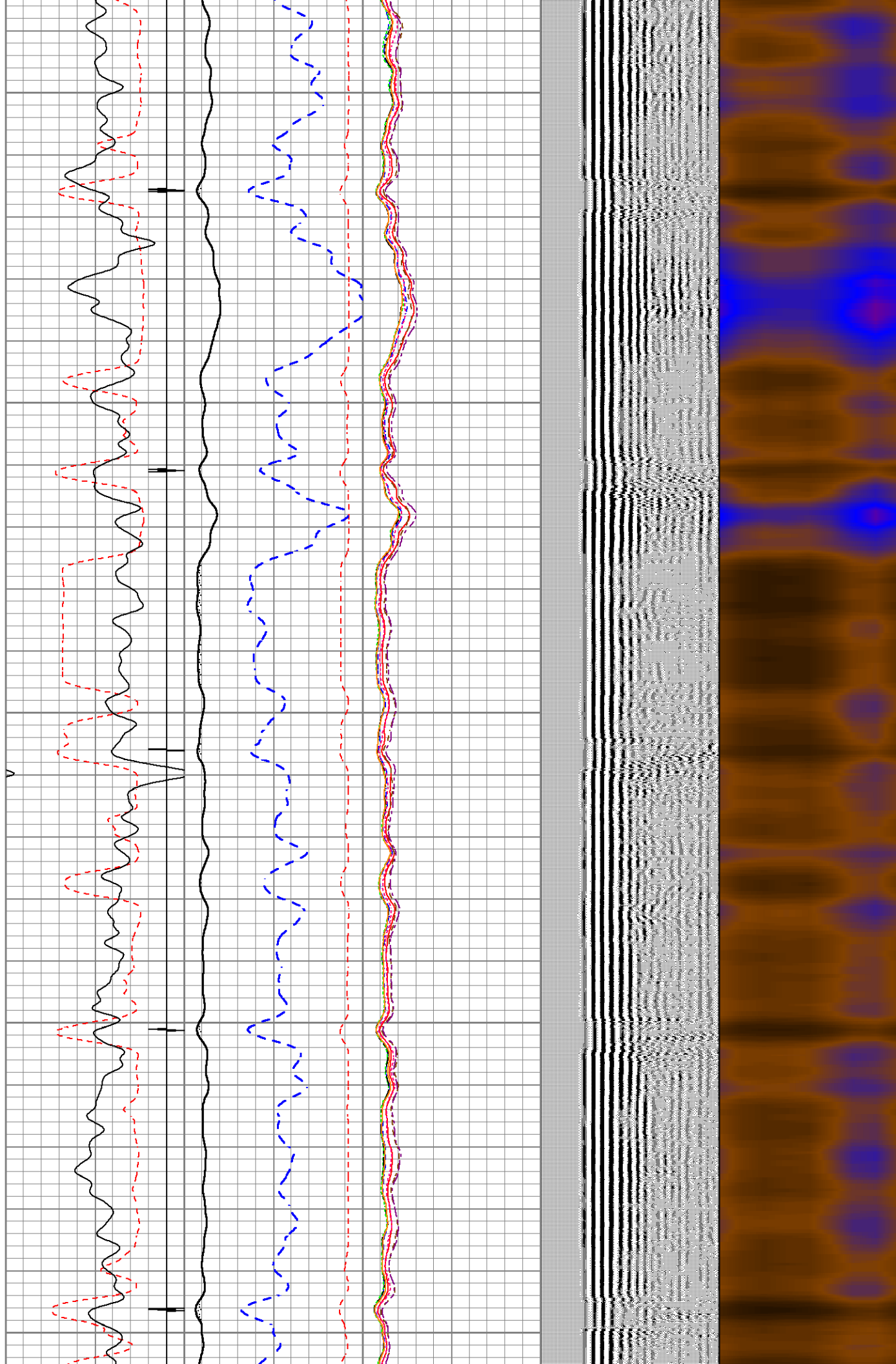
1200



1300

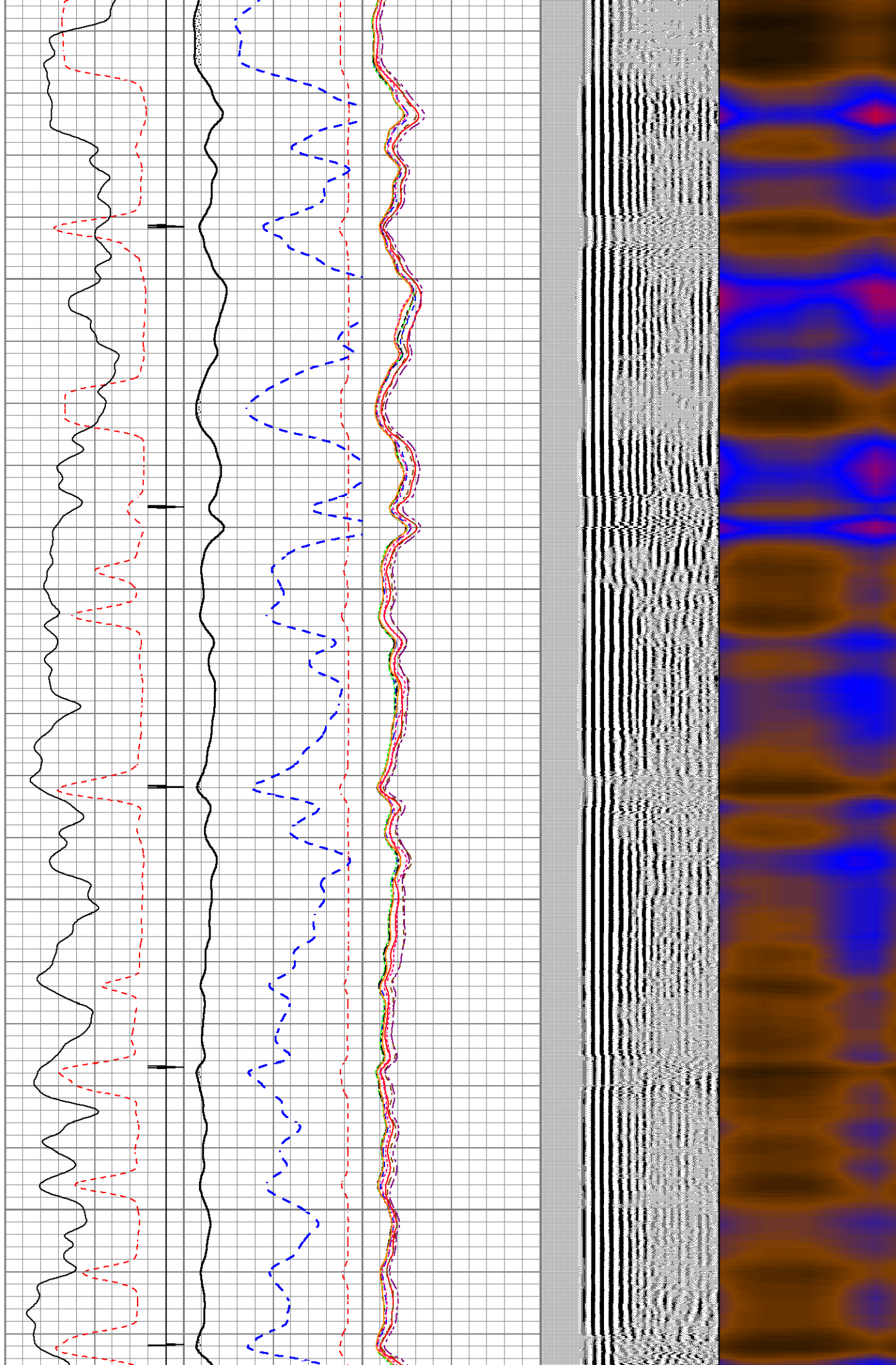
1400

1500



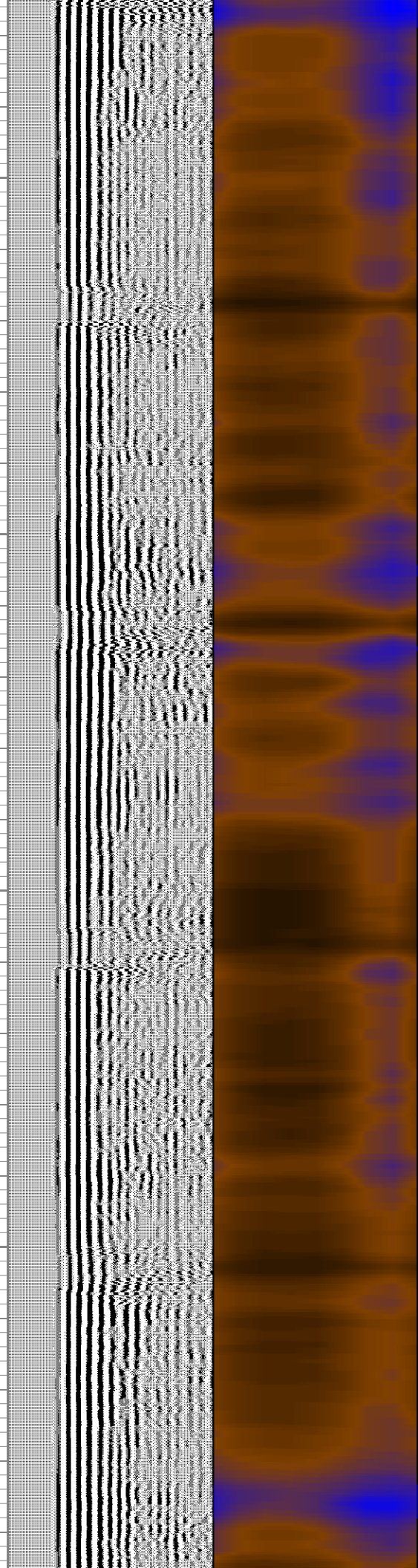
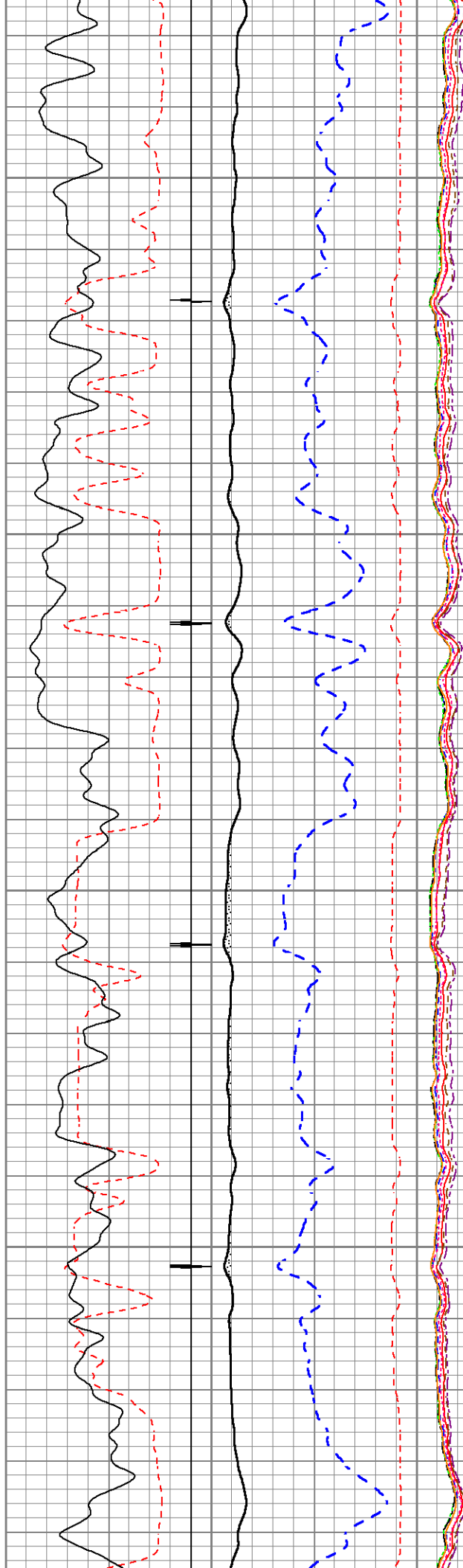
1600

1700



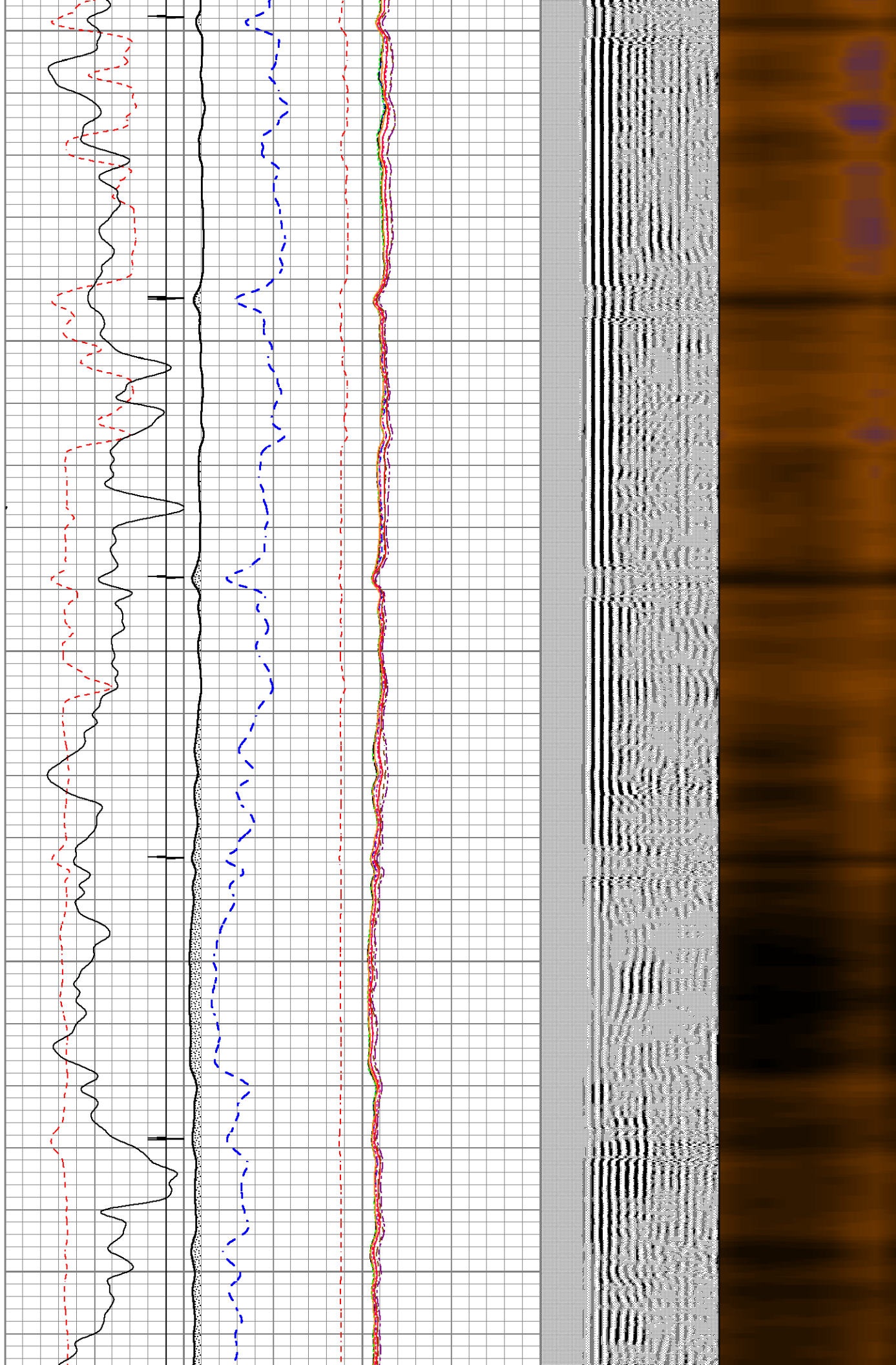
1800

1900



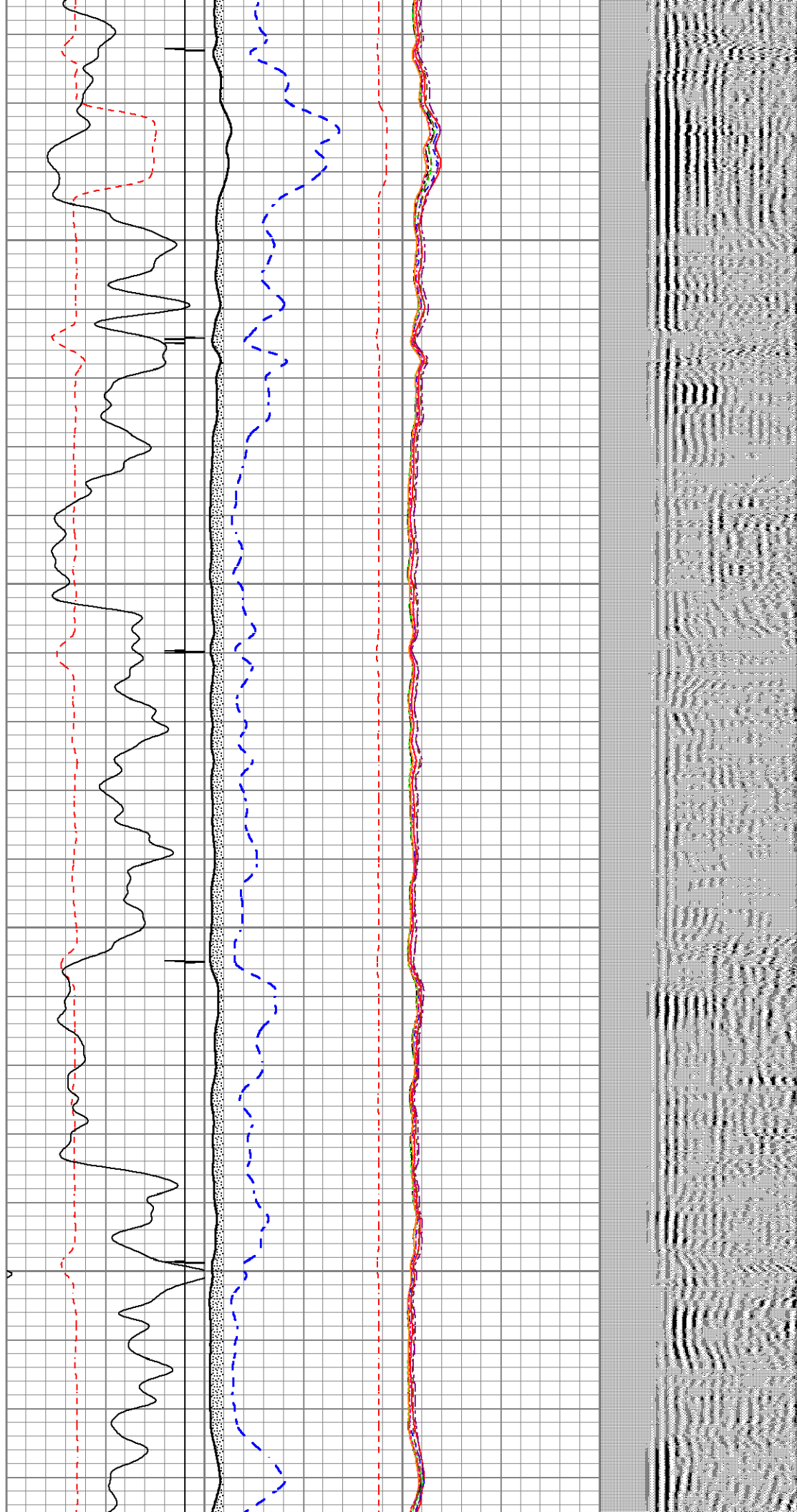
2000

2100



2200

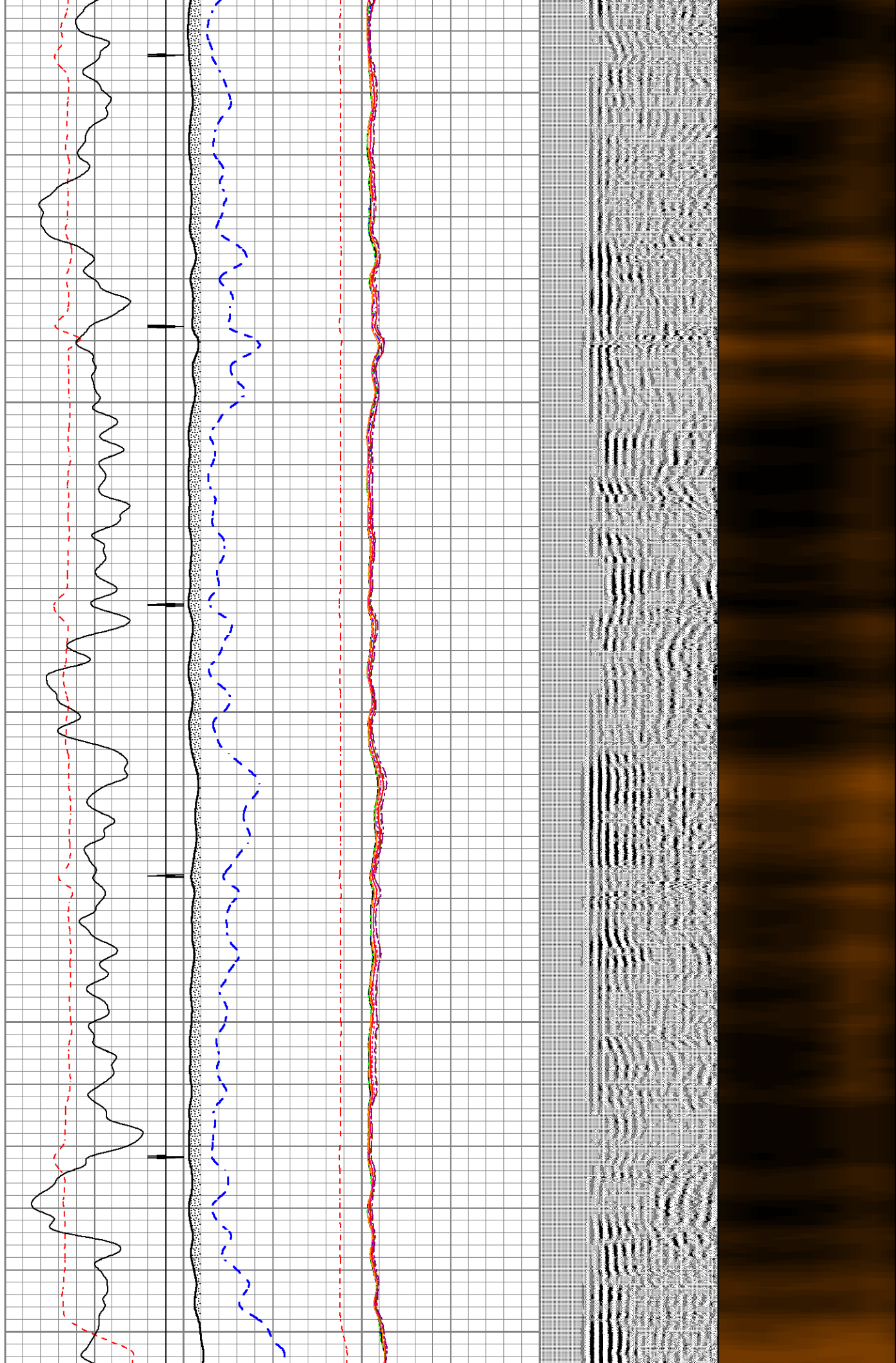
2300



2400

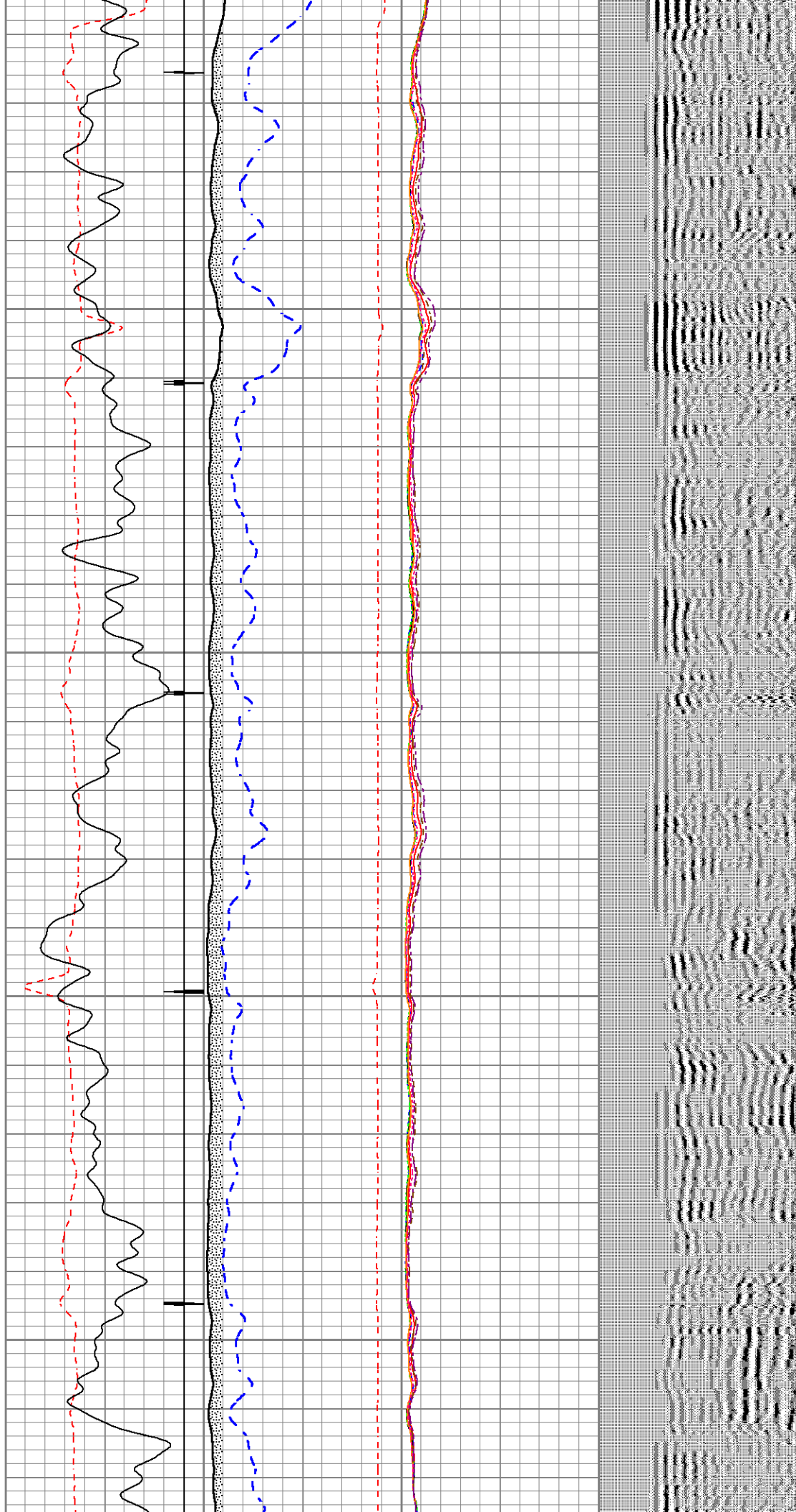
2500

2600



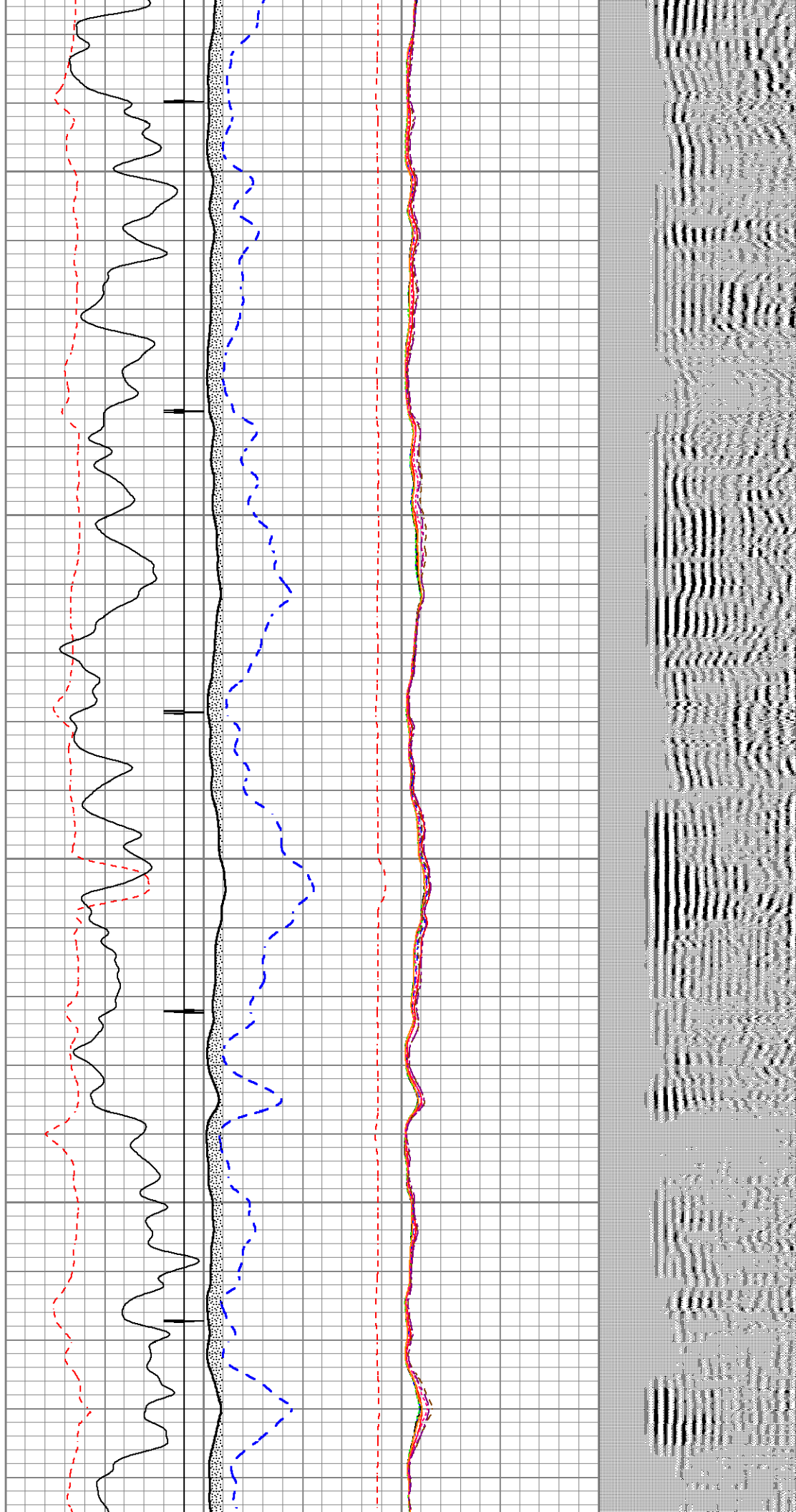
2700

2800



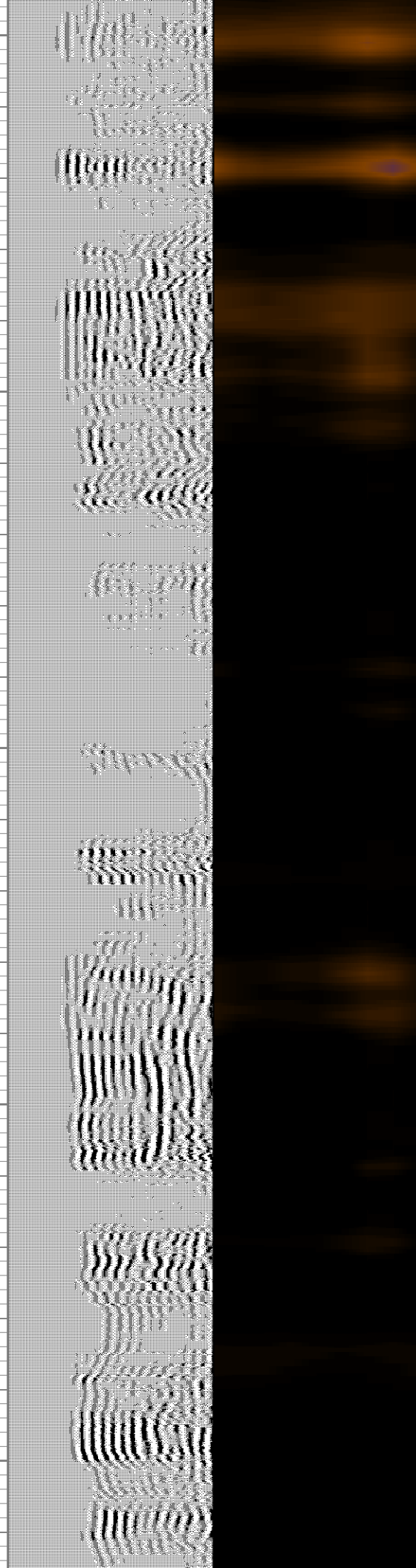
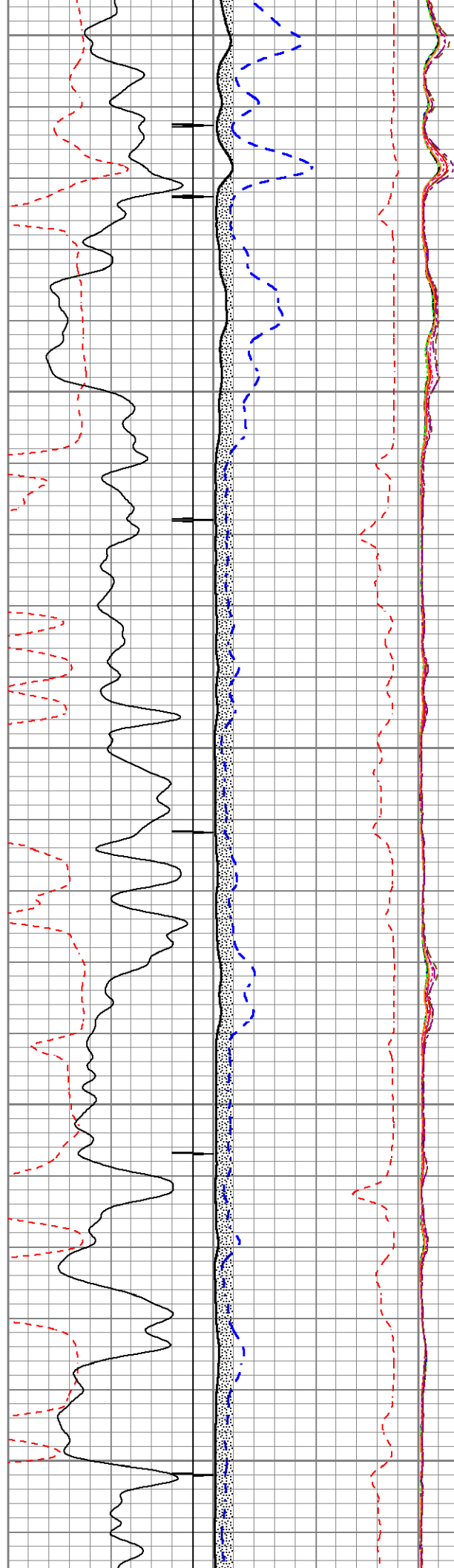
2900

3000



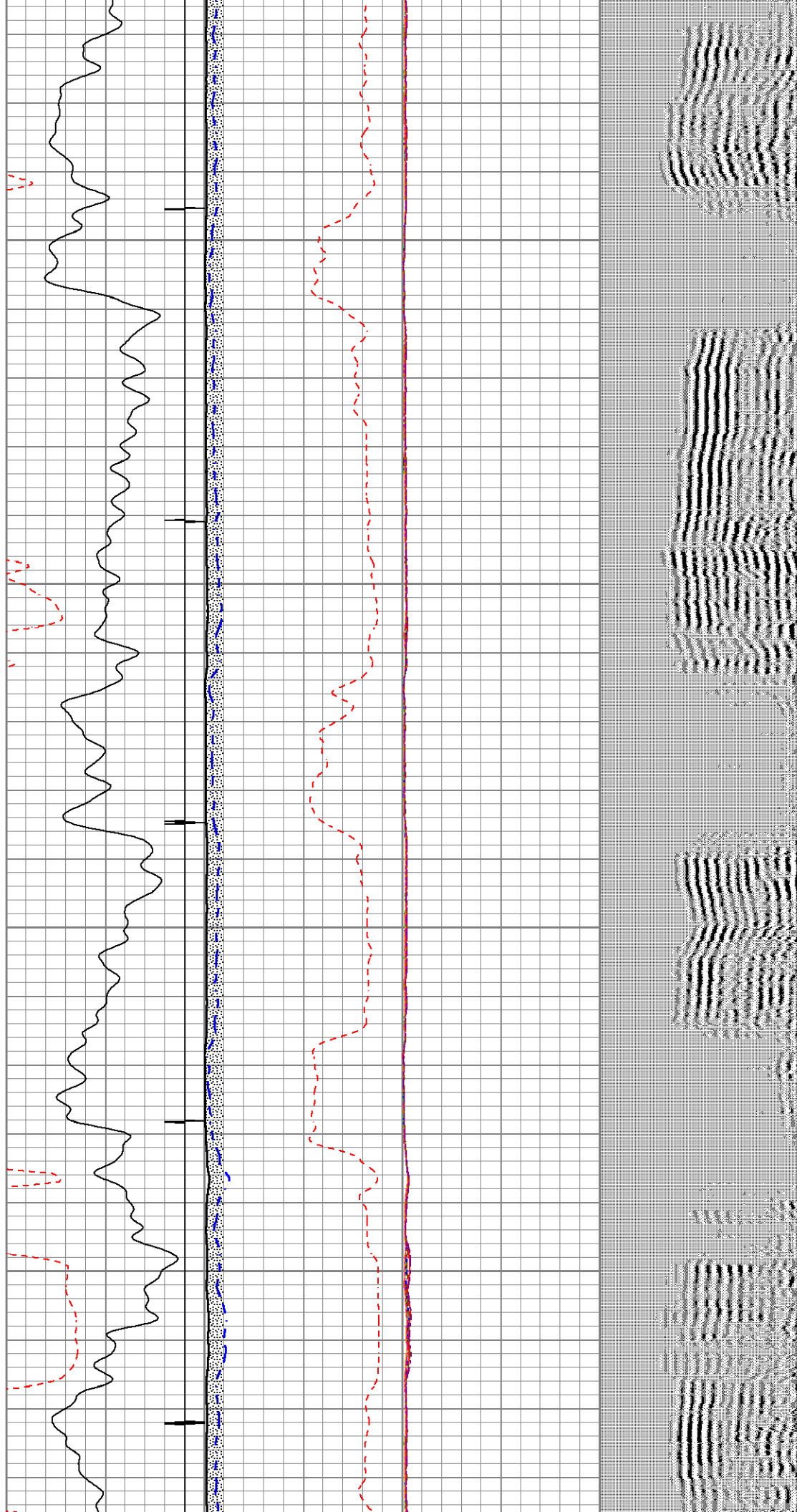
3100

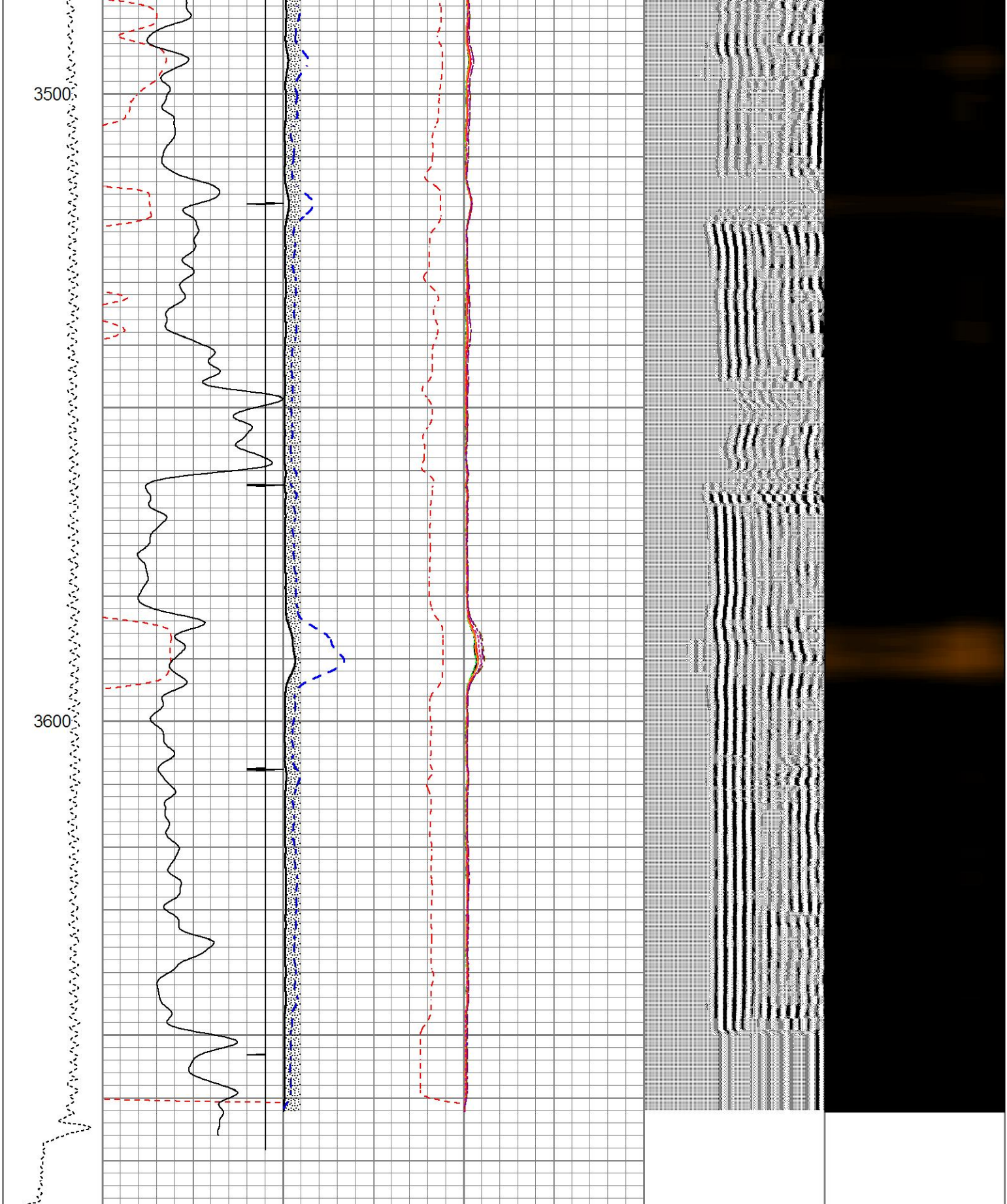
3200



3300

3400





LTEN	355	TT (usec)	255	0	AMP (mV)	100	0	AMPS1	120	200	VDL (usec)	1200	1	Cement Map	8
0 (lb 1450)	-9	CCL	1		TT3FT		0	AMPS2	120						
	0	GR (GAPI)	200	1200	(usec)	200	0	AMPS3	120						
				Amplifide Amplitude			0	AMPS4	120						
				0	(mV)	20	0	AMPS5	120						
							0	AMPS6	120						

0	AMPS7	120
0	AMPS8	120

Database File

e:\tribal bk 2\southern ute tribal bk 2.db

Dataset Pathname

pass8.2

Presentation Format

rcblsect

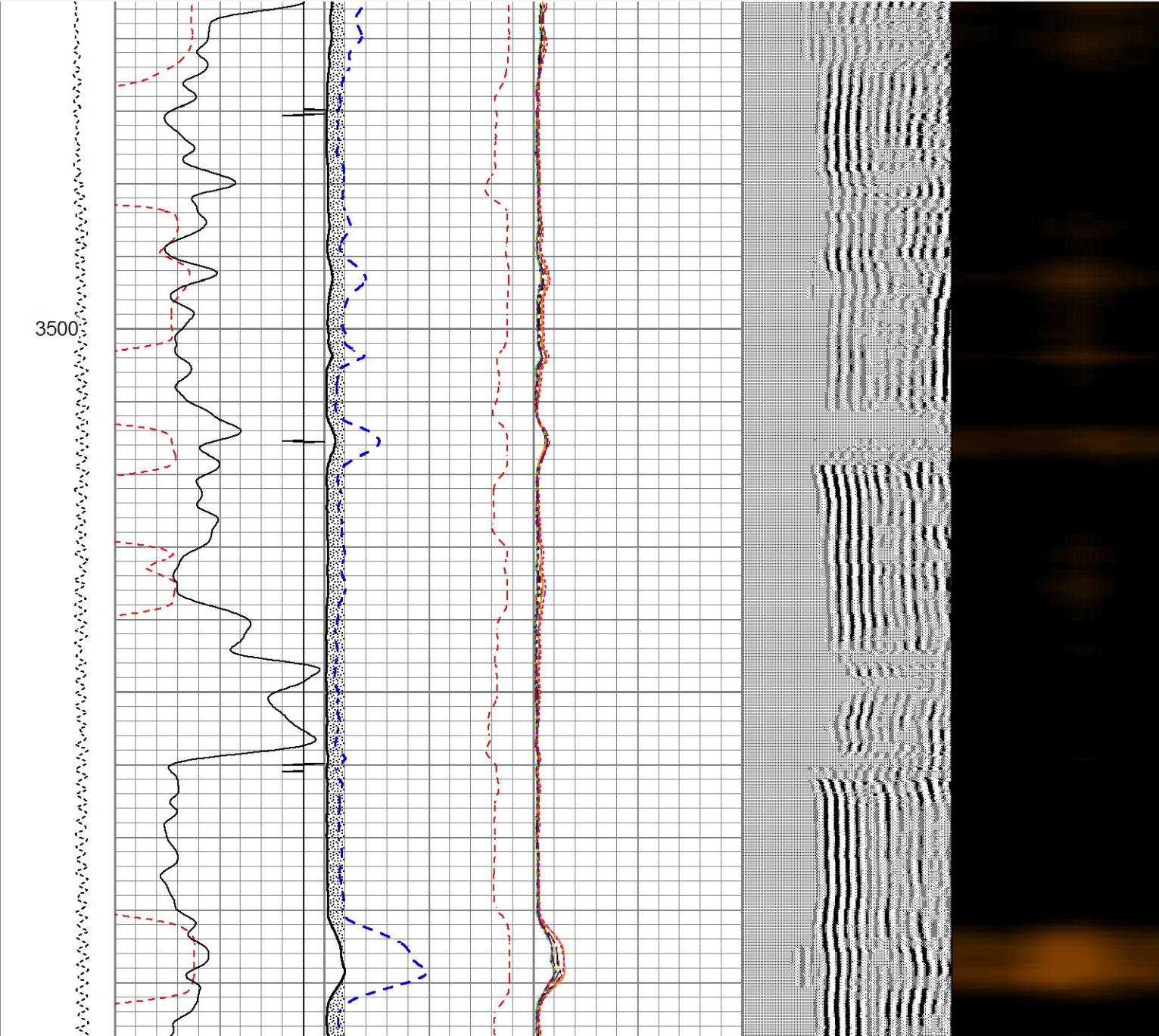
Dataset Creation

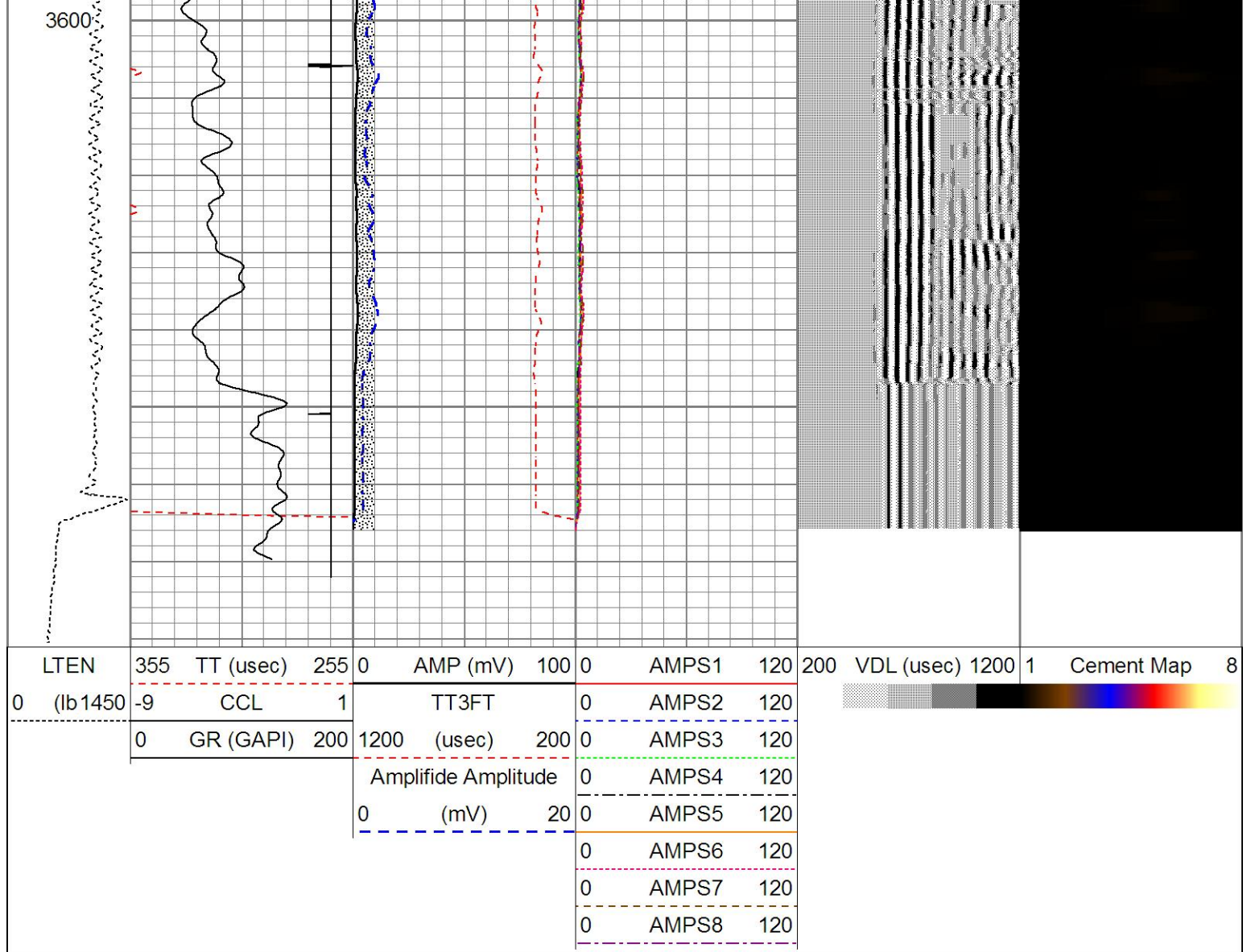
Wed Feb 15 12:46:53 2017

Charted by

Depth in Feet scaled 1:240

LTEN	355	TT (usec)	255	0	AMP (mV)	100	0	AMPS1	120	200	VDL (usec)	1200	1	Cement Map	8
0	(lb 1450	-9	CCL	1	TT3FT		0	AMPS2	120						
		0	GR (GAPI)	200	1200	(usec)	200	0	AMPS3	120					
					Amplifide Amplitude		0	AMPS4	120						
				0	(mV)	20	0	AMPS5	120						
							0	AMPS6	120						
							0	AMPS7	120						
							0	AMPS8	120						





Calibration Report						
Database File	e:\tribal bk 2\southern ute tribal bk 2.db					
Dataset Pathname	pass8.2					
Dataset Creation	Wed Feb 15 12:46:53 2017					
Compensated Neutron Calibration Report						
Serial Number:			090117			
Tool Model:			Probe_B			
CALIBRATION		Fri Jan 30 17:39:55 2009				
	Detector	Readings		Target		Normalization
	Short Space	4094.93	cps	0.00	cps	1.0000
	Long Space	775.82	cps	0.00	cps	1.0000
PRE-SURVEY VERIFICATION						
	Detector	Readings		Measured		Target
1)	Short Space	cps				
	Long Space	cps		pu	pu	
2)	Short Space	cps				
	Long Space	cps		pu		
3)	Short Space	cps				

	Long Space	cps	pu			
POST-SURVEY VERIFICATION						
	Detector	Readings	Measured	Target		
1)	Short Space	cps				
	Long Space	cps	pu	pu		
2)	Short Space	cps				
	Long Space	cps	pu	pu		
3)	Short Space	cps				
	Long Space	cps	pu	pu		
Gamma Ray Calibration Report						
Serial Number:		275				
Tool Model:		Probe				
Performed:		Mon Feb 13 13:19:17 2017				
Calibrator Value:		1.0	GAPI			
Background Reading:		0.0	cps			
Calibrator Reading:		1.0	cps			
Sensitivity:		1.0000	GAPI/cps			
Segmented Cement Bond Log Calibration Report						
Serial Number:		1308-02				
Tool Model:		Probe				
Calibration Casing Diameter:		5.500	in			
Calibration Depth:		456.019	ft			
Master Calibration, performed Wed Feb 15 09:10:46 2017:						
	Raw (v)		Calibrated (mv)		Results	
	Zero	Cal	Zero	Cal	Gain	Offset
3'	0.004	0.699	0.000	71.921	103.468	-0.408
CAL	0.003	1.038				
5'	0.004	0.523	0.000	71.921	138.803	-0.618
SUM						
S1	-0.002	0.687	0.000	100.000	145.156	0.223
S2	0.005	0.708	0.000	100.000	142.289	-0.670
S3	0.004	0.778	0.000	100.000	129.234	-0.558
S4	0.004	0.755	0.000	100.000	133.058	-0.523
S5	0.005	0.734	0.000	100.000	137.169	-0.623
S6	0.004	0.691	0.000	100.000	145.566	-0.593
S7	0.004	0.667	0.000	100.000	150.835	-0.580
S8	0.004	0.691	0.000	100.000	145.398	-0.541
Internal Reference Calibration, performed Wed Oct 05 11:57:18 2016:						
	Raw (v)		Calibrated (v)		Results	
	Zero	Cal	Zero	Cal	Gain	Offset
CAL	0.000	0.000	0.003	1.038	1.000	0.000
Air Zero Calibration, performed Wed Feb 15 08:56:14 2017:						
	Raw (v)		Calibrated (v)		Results	

	Raw (v)	Calibrated (v)	Results
	<u>Zero</u>	<u>Zero</u>	<u>Offset</u>
3'	0.000	0.000	0.000
5'	0.000	0.000	0.000
SUM			
S1	0.000	0.000	0.000
S2	0.000	0.000	0.000
S3	0.000	0.000	0.000
S4	0.000	0.000	0.000
S5	0.000	0.000	0.000
S6	0.000	0.000	0.000
S7	0.000	0.000	0.000
S8	0.000	0.000	0.000