



CASED HOLE
COMPENSATED NEUTRON
W/GAMMA RAY
CASING COLLARS

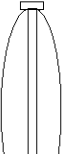
Company		BP AMERICA	
Well		SOUTHERN UTE TRIBAL BK 2	
Field		IGNACIO	
County		LA PLATA	
State		CO	
Location:		API # : 05-067-09969	
Permanent Datum		SEC 29 TWP 33N RGE 7W	
Log Measured From		GROUND LEVEL Elevation 6397	
Drilling Measured From		KB 11 KELLY BUSHING	
Other Services		N/A	
Date		2-15-17	
Run Number		1	
Depth Driller		3755	
Depth Logger		3666	
Bottom Logged Interval		3666	
Top Log Interval		SURFACE	
Open Hole Size		N/A	
Type Fluid		WATER	
Density / Viscosity		8.4	
Max. Recorded Temp.		N/A	
Estimated Cement Top		SEE LOG	
Time Well Ready		7:00	
Time Logger on Bottom		8:00	
Equipment Number		118	
Location		FARMINGTON	
Recorded By		SWEAT	
Witnessed By		WHITMEN	
Run Number		Borehole Record	
Bit		From	
To		Size	
Weight		From	
To		Tubing Record	
Casing Record		Size	
Surface String		8.625	
Prot. String		5.5 J-65	
Production String		Liner	

<<< Fold Here >>>

All interpretations are opinions based on inferences from electrical or other measurements and we cannot and do not guarantee the accuracy or correctness of any interpretation, and we shall not, except in the case of gross or willful negligence on our part, be liable or responsible for any loss, costs, damages, or expenses incurred or sustained by anyone resulting from any interpretation made by any of our officers, agents or employees. These interpretations are also subject to our general terms and conditions set out in our current Price Schedule.

Comments

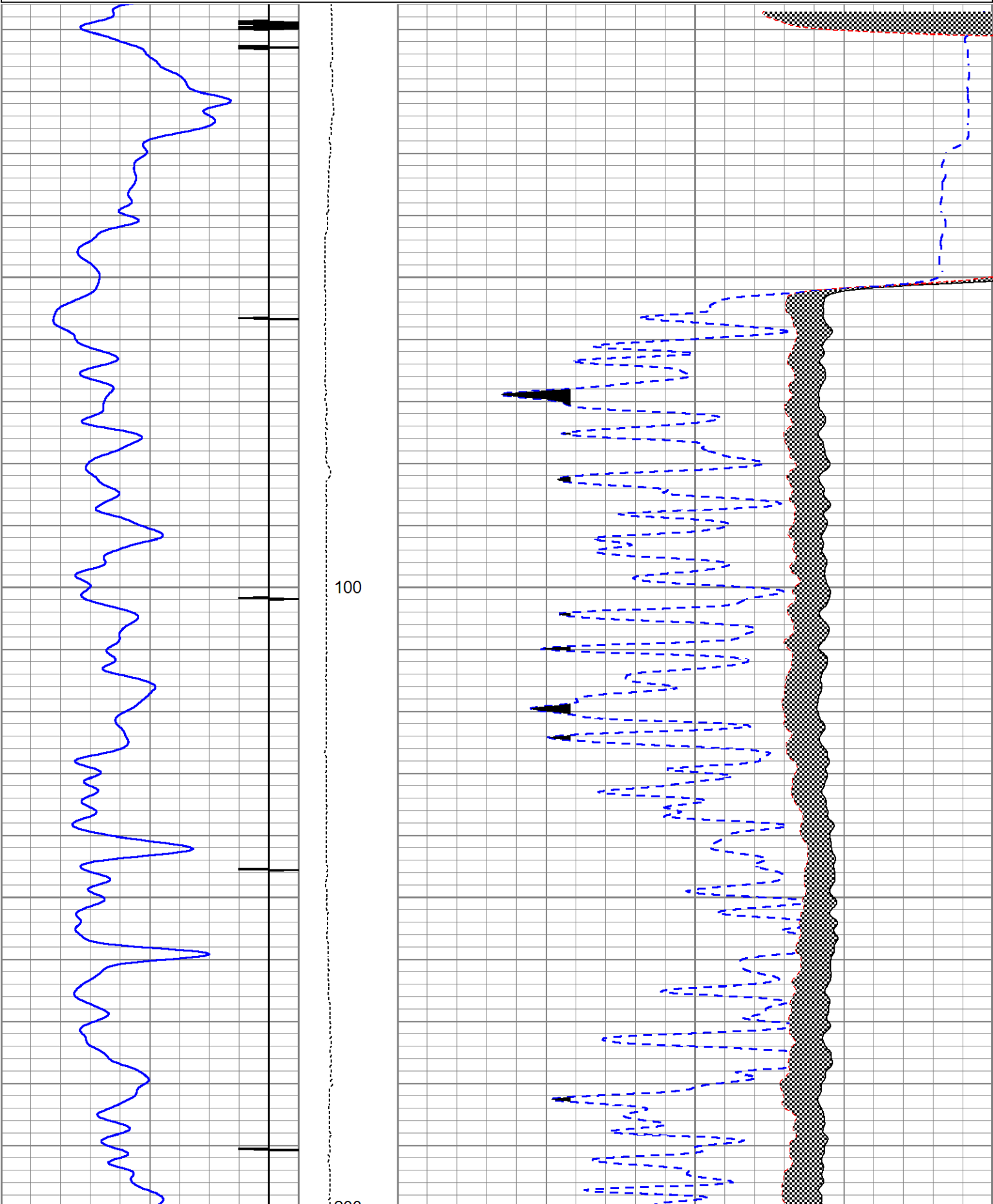
THANK YOU FOR USING BASIN WELL LOGGING

Sensor	Offset (ft)	Schematic	Description	Length (ft)	O.D. (in)	Weight (lb)
			CENT-PTS275	2.83	2.75	



Database File	e:\tribal bk 2\southern ute tribal bk 2.db
Dataset Pathname	pass9.4
Presentation Format	cntfruit
Dataset Creation	Wed Feb 15 12:42:17 2017
Charted by	Depth in Feet scaled 1:240

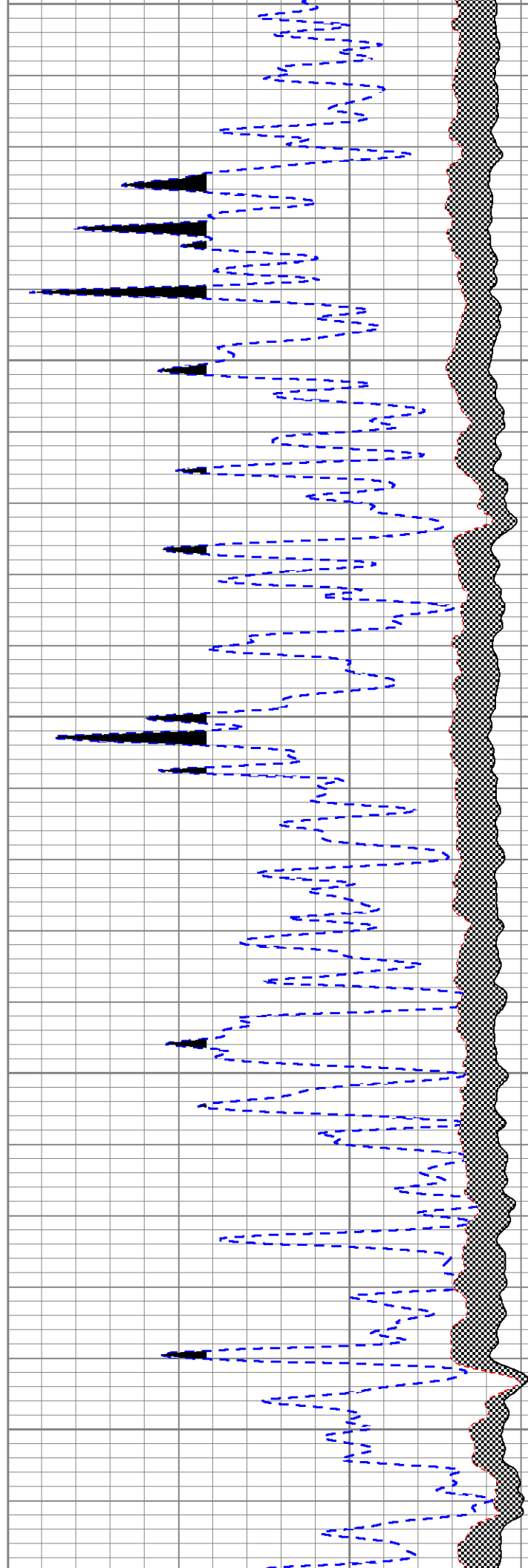
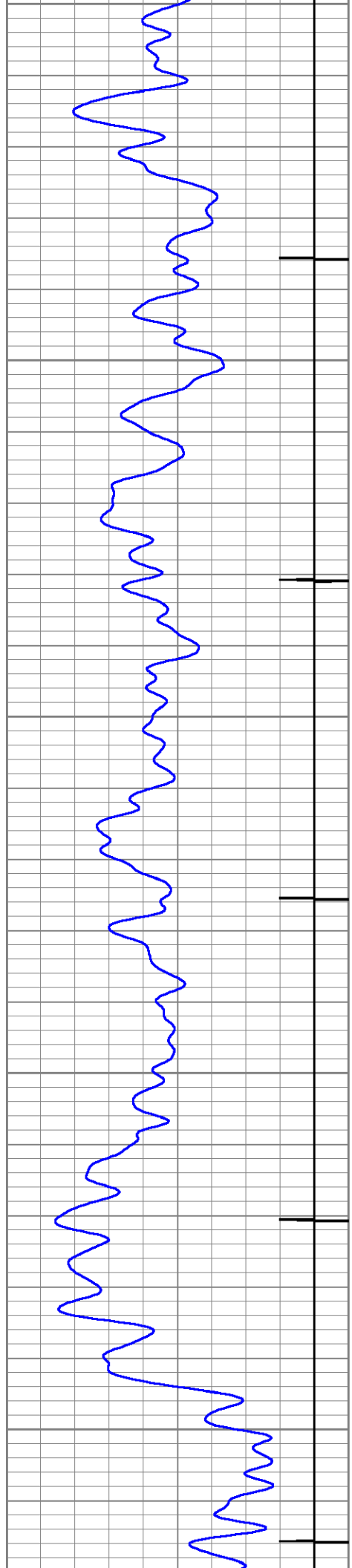
0	GR (GAPI)	200	LTEN	60	NEUTRON POROSITY (pu)		0
-9	CCL	1	0	(lb) 800	NEURTON LONG SPACE		
					-480	(cps)	900
					NEUTRON SHORT SPACE		
					-275	(cps)	3400

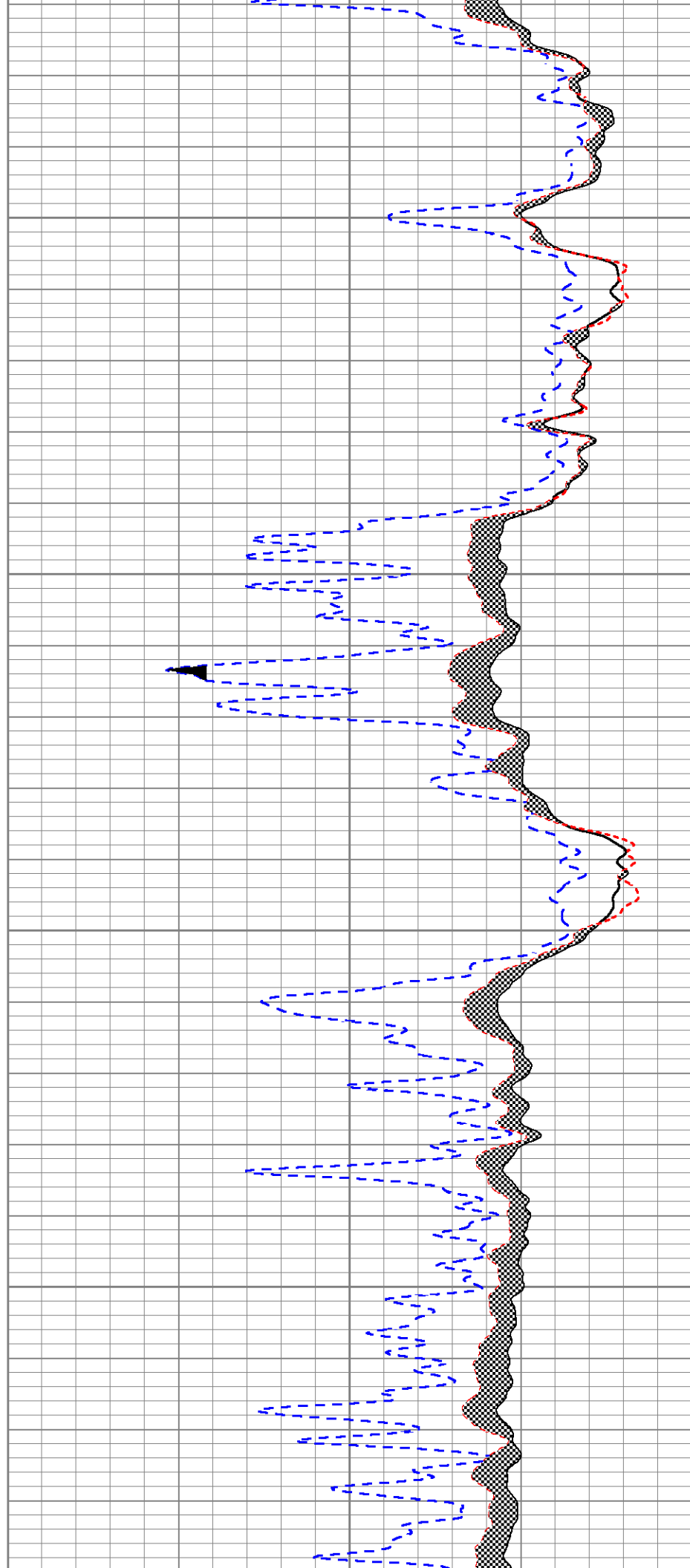
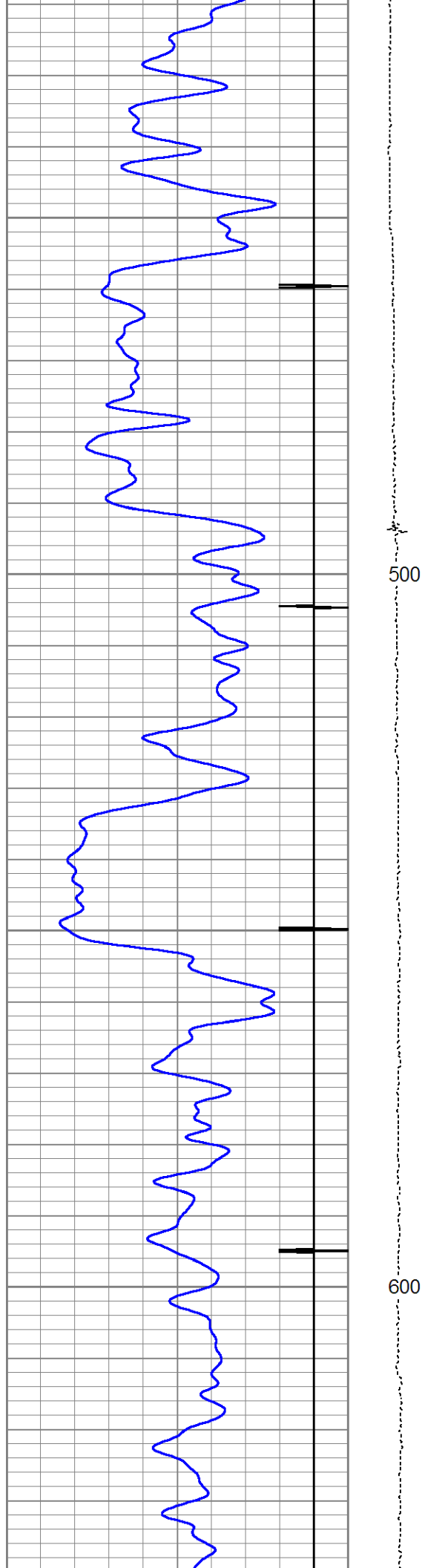


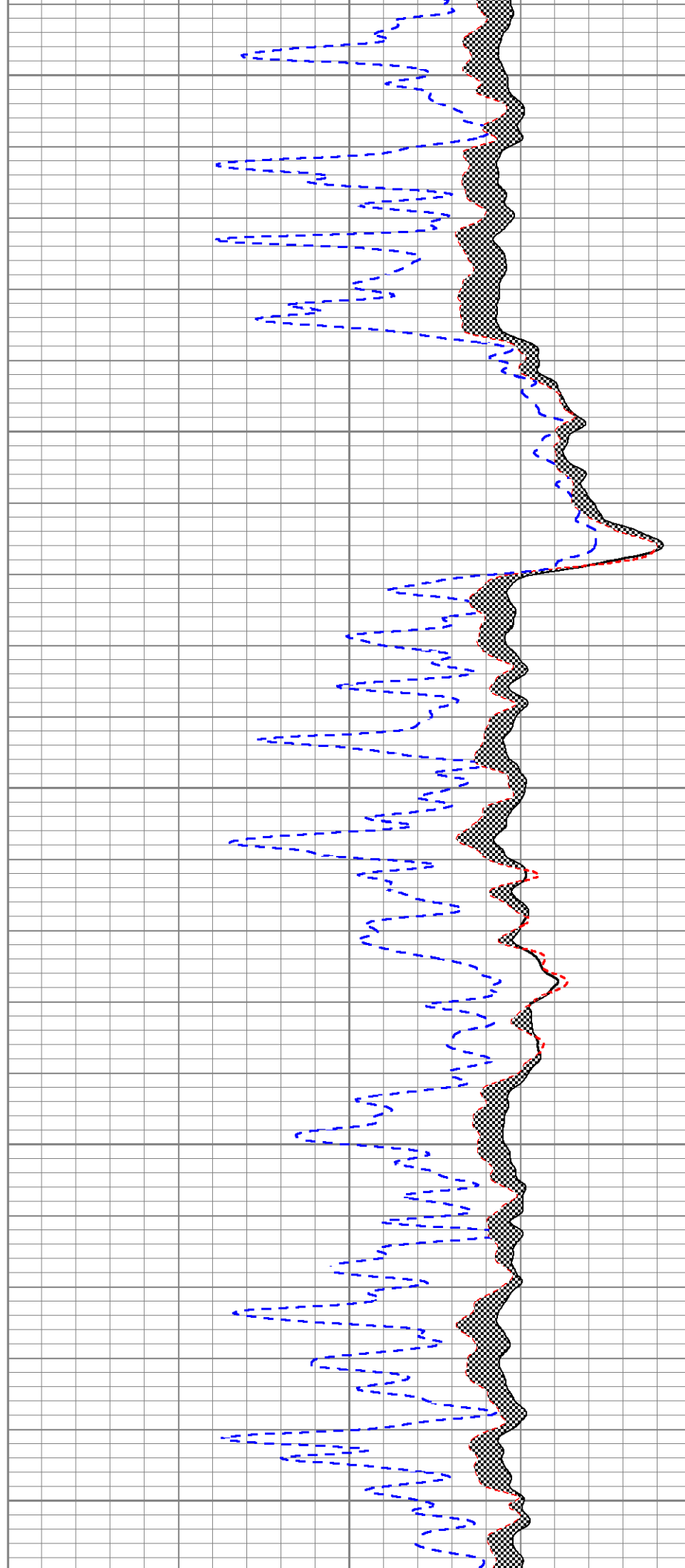
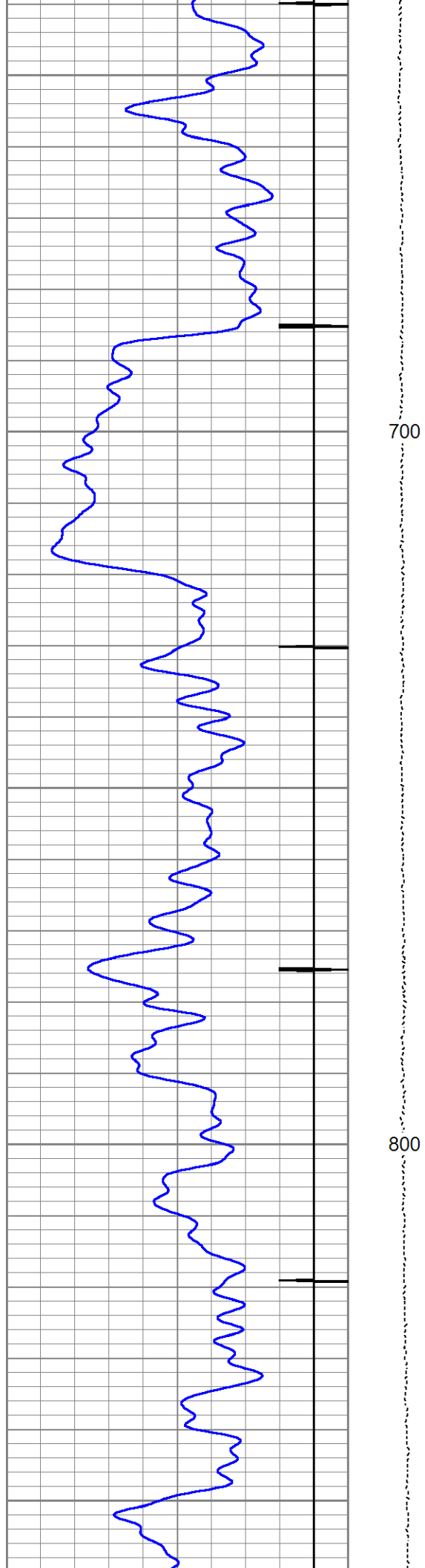
200

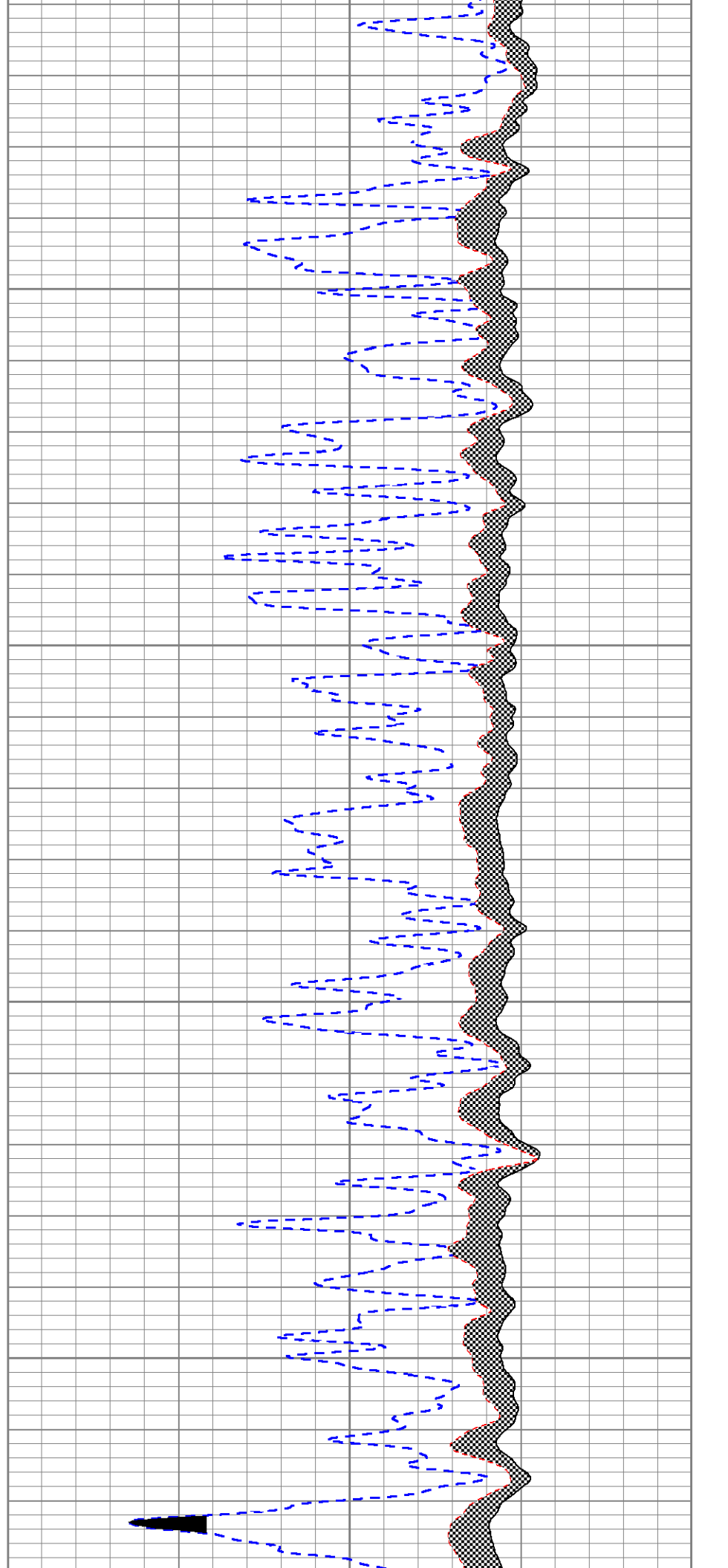
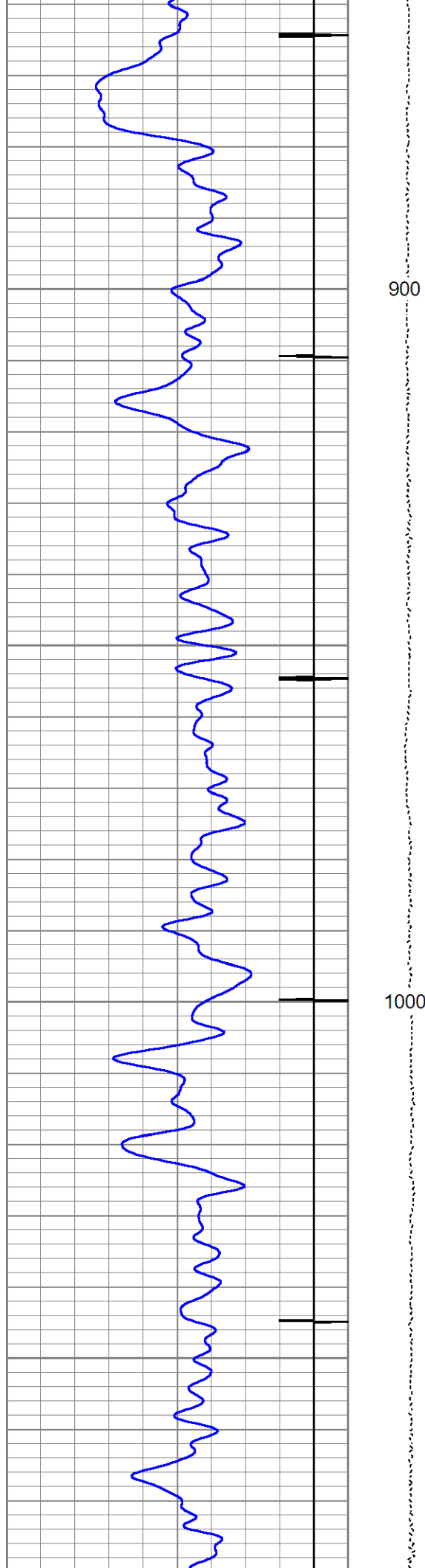
300

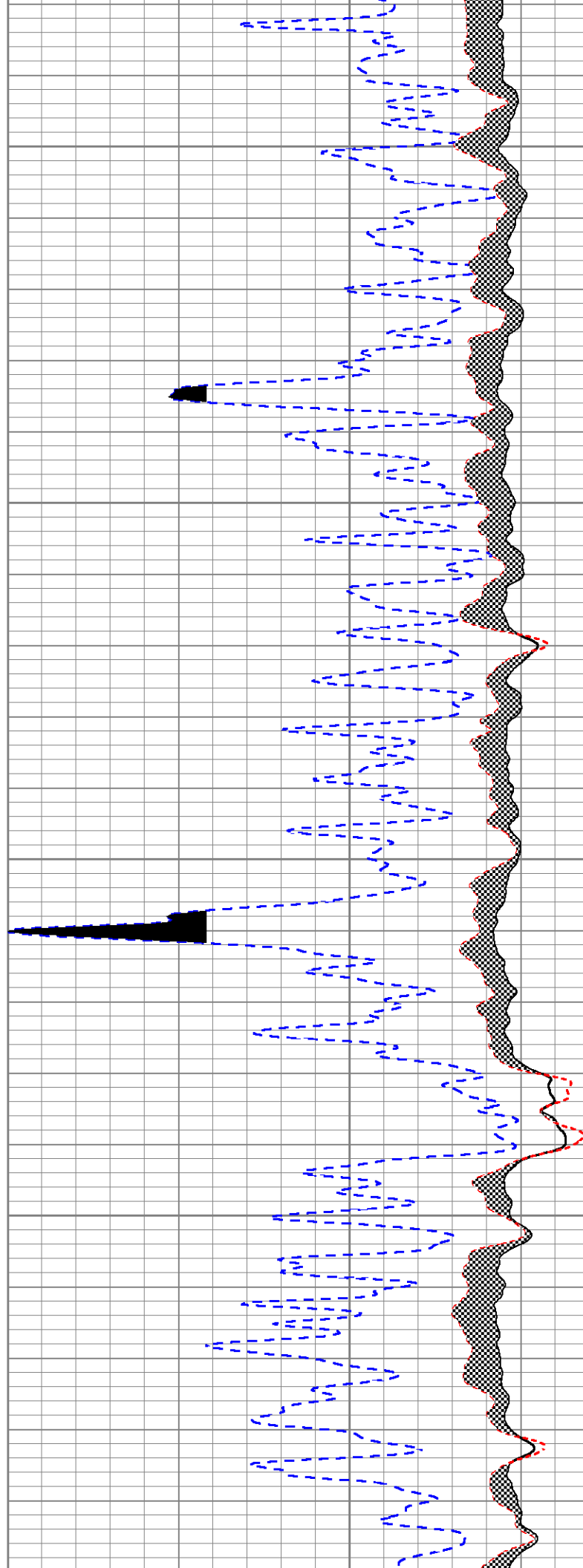
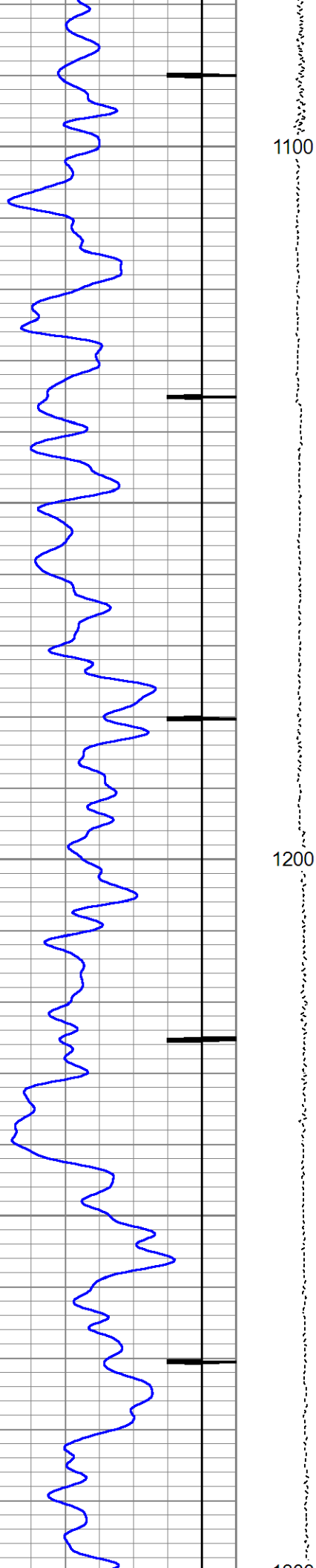
400

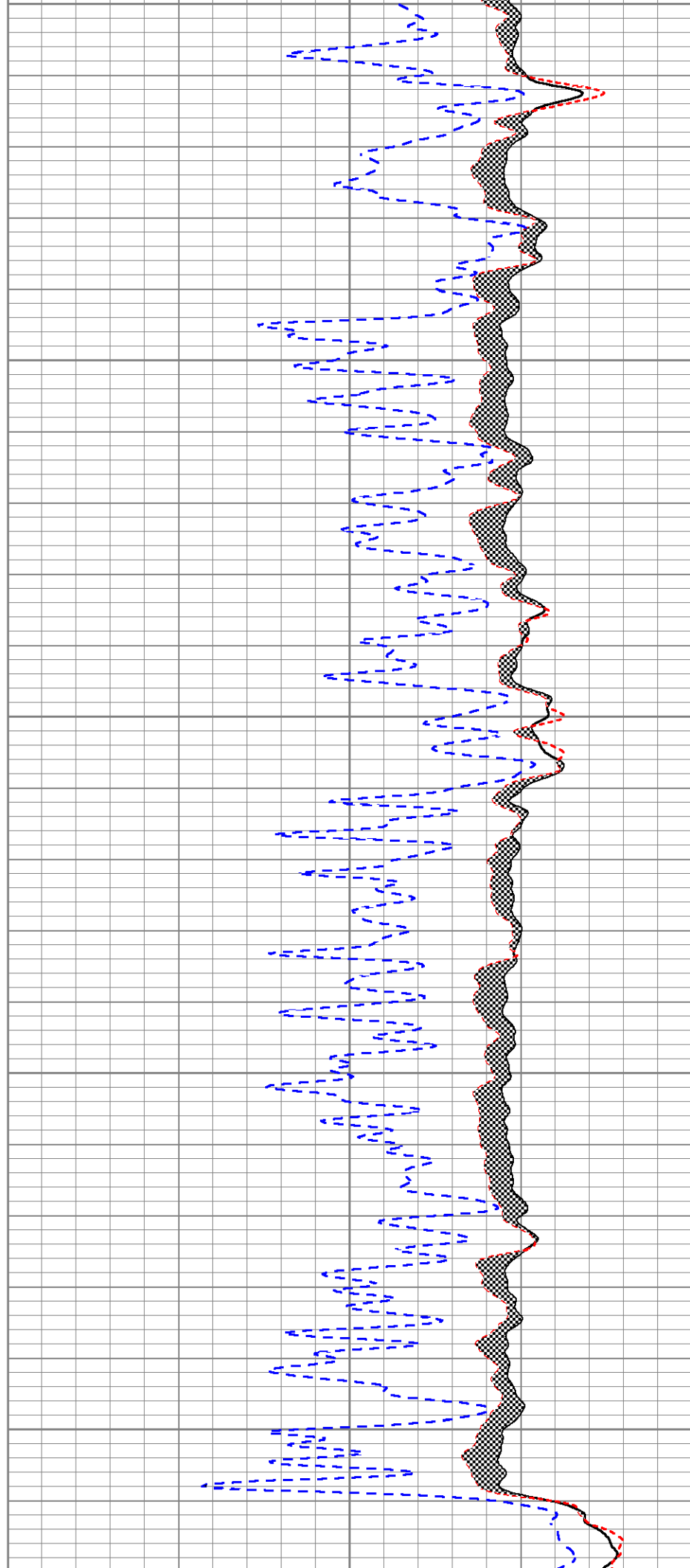
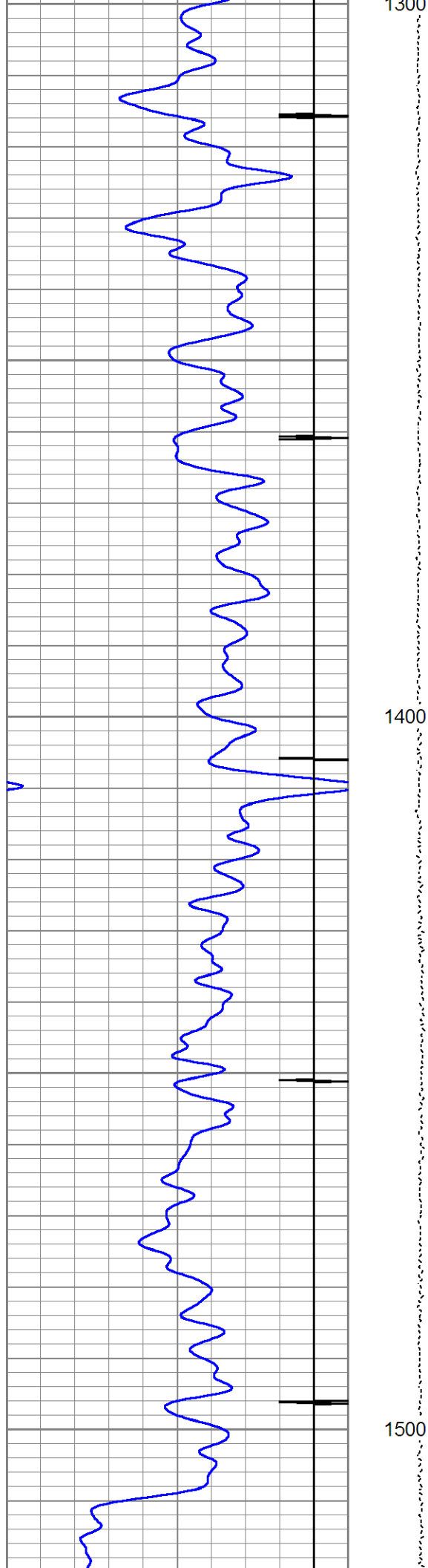


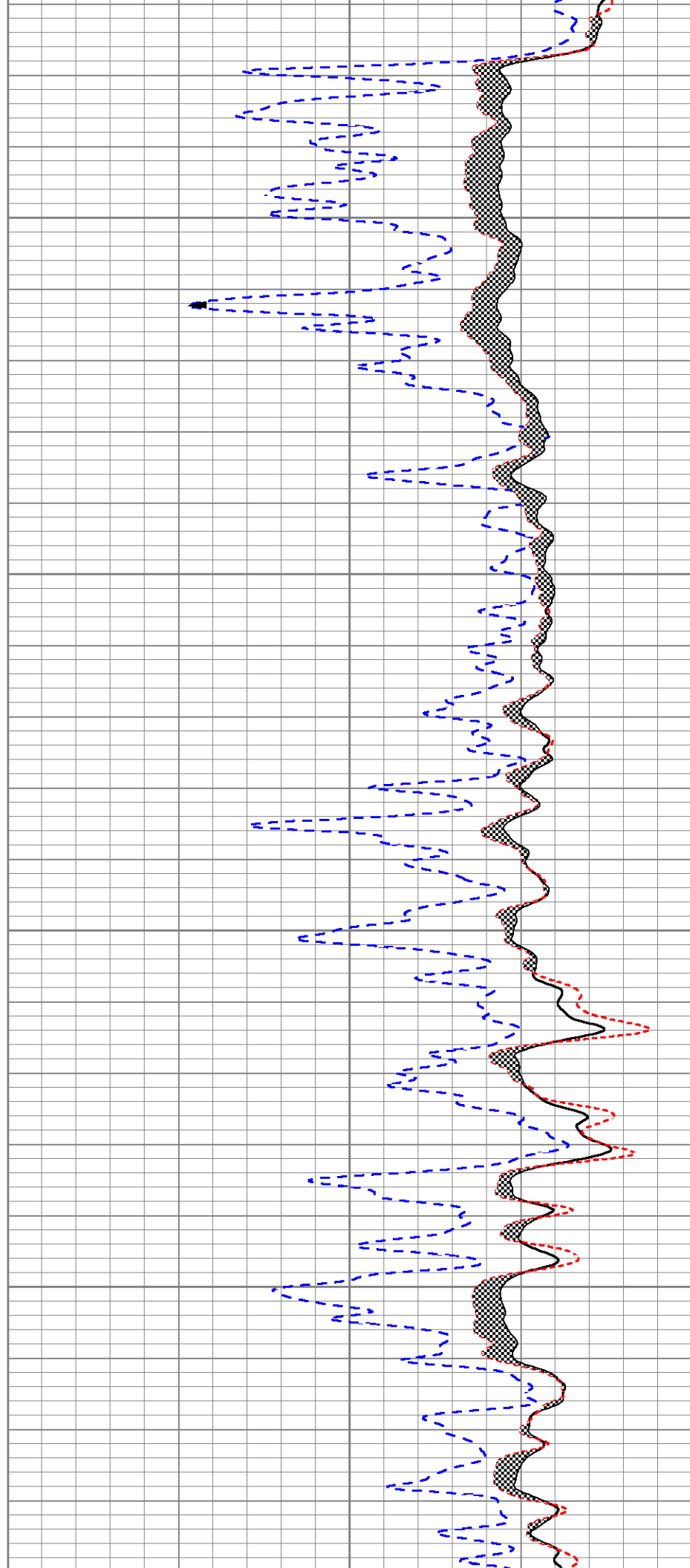
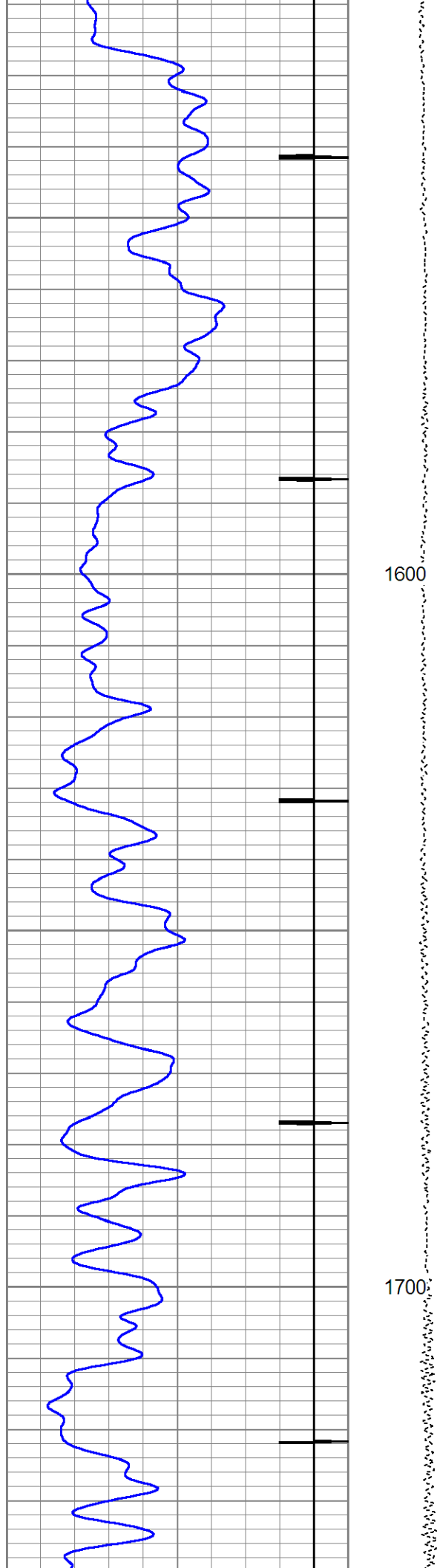


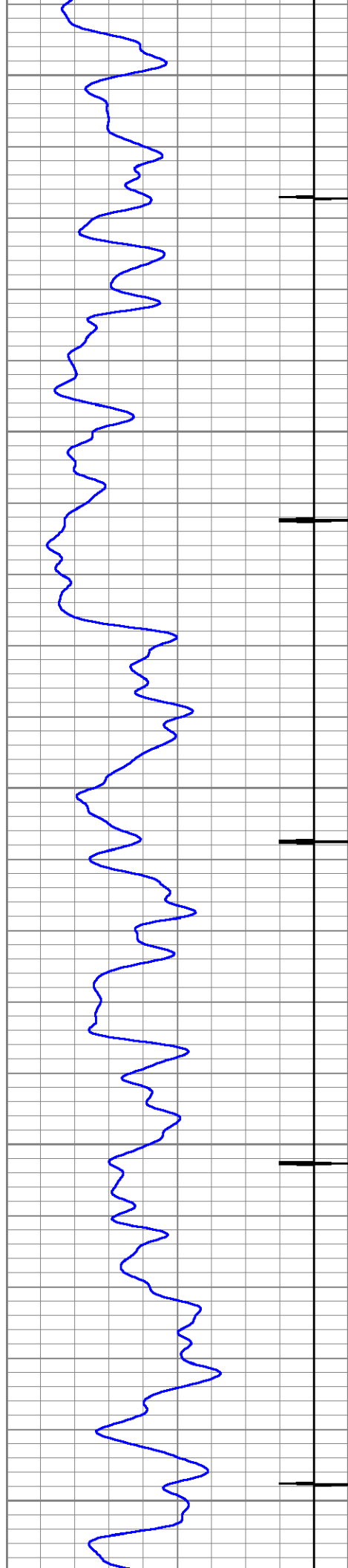






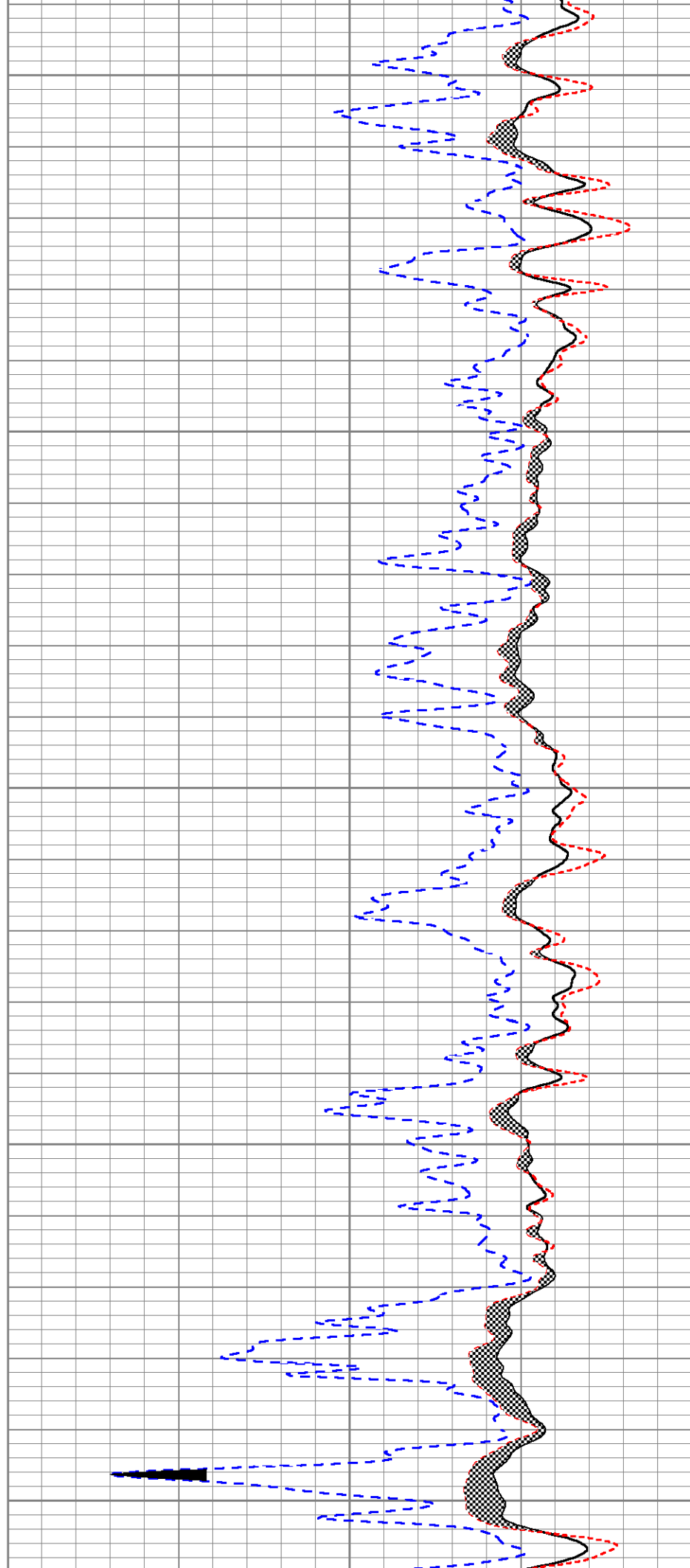


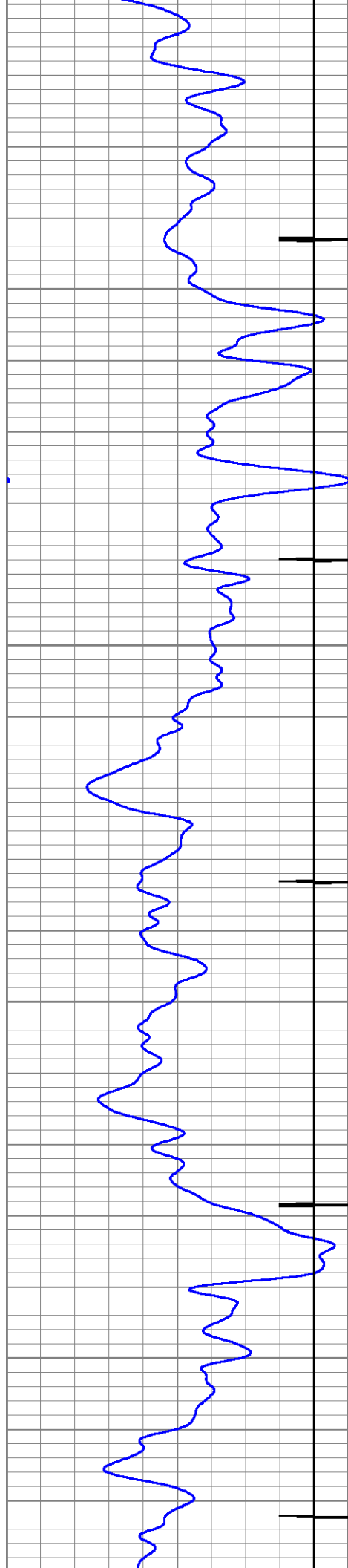




1800

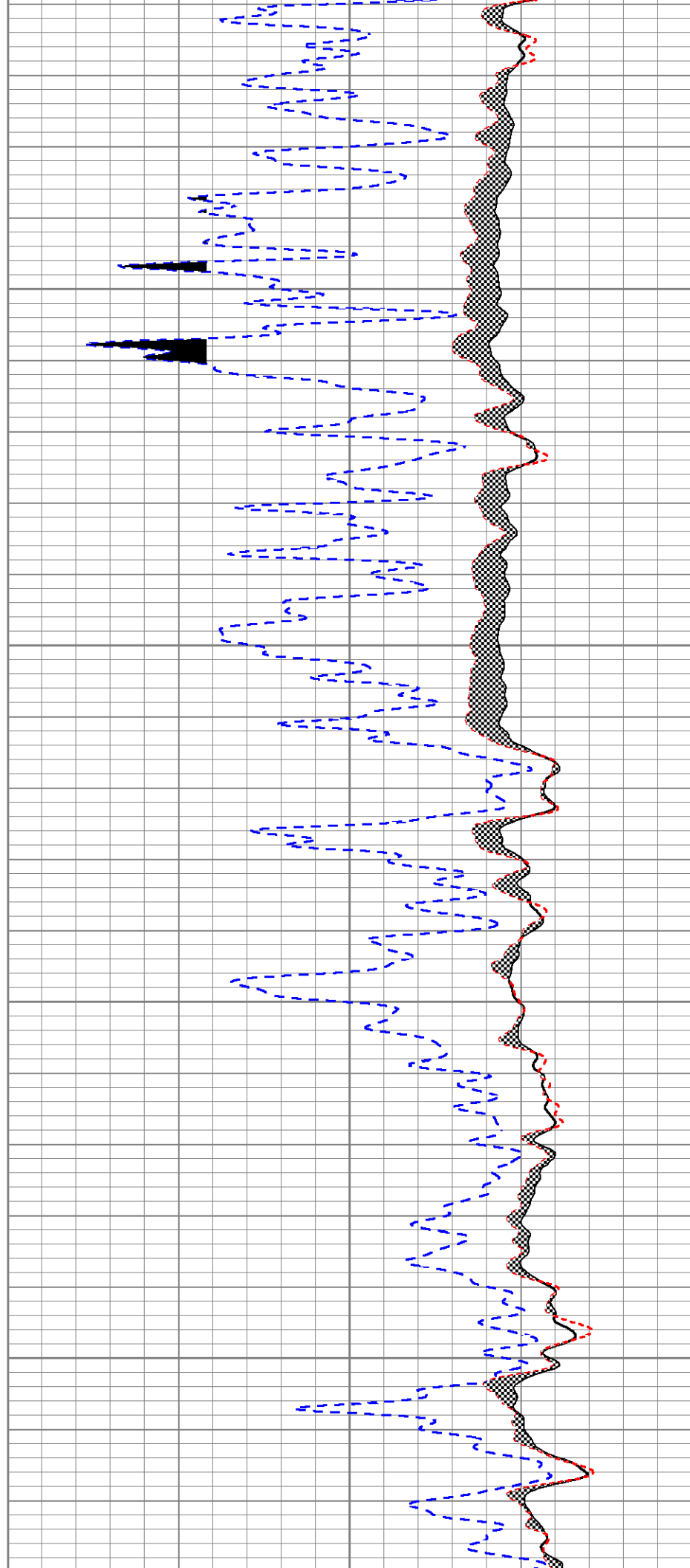
1900

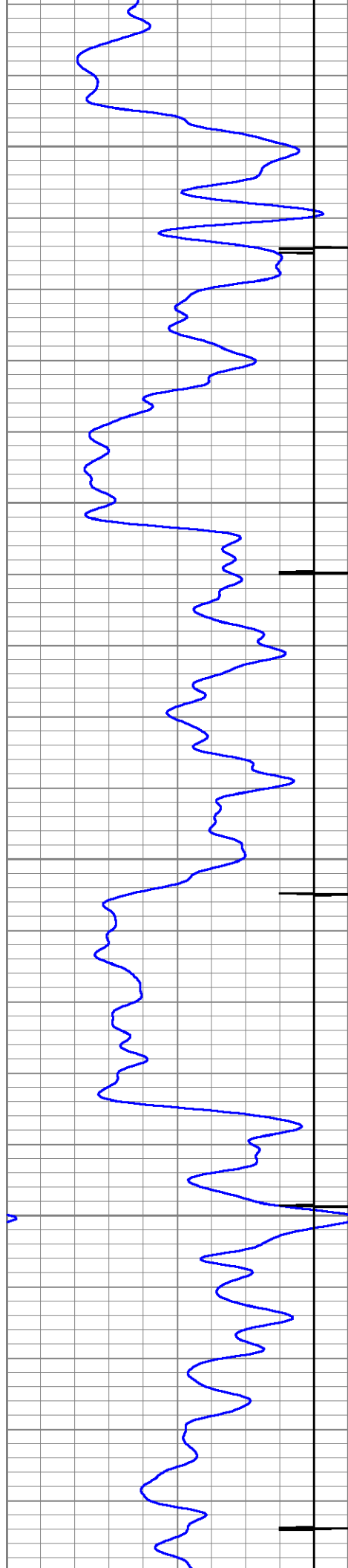




2000

2100

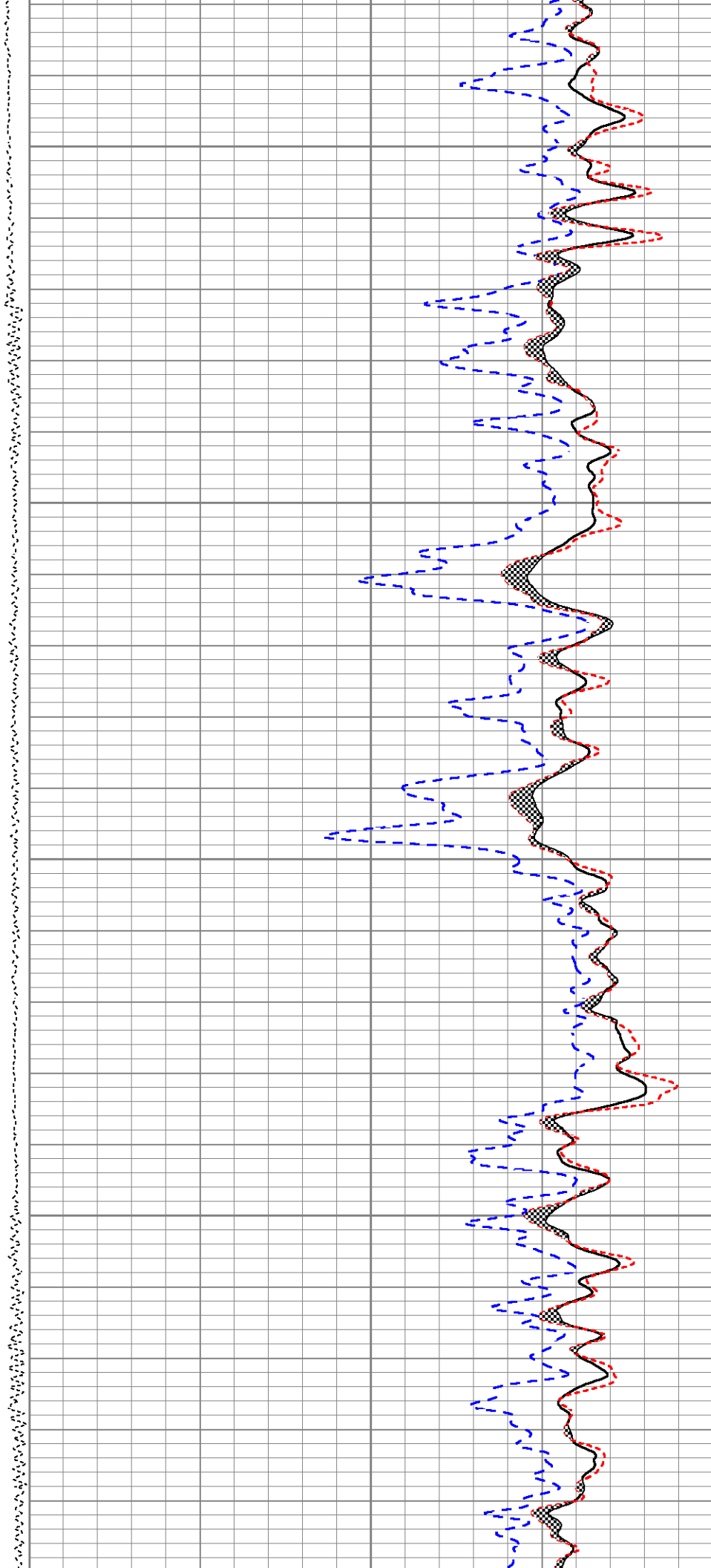




2200

2300

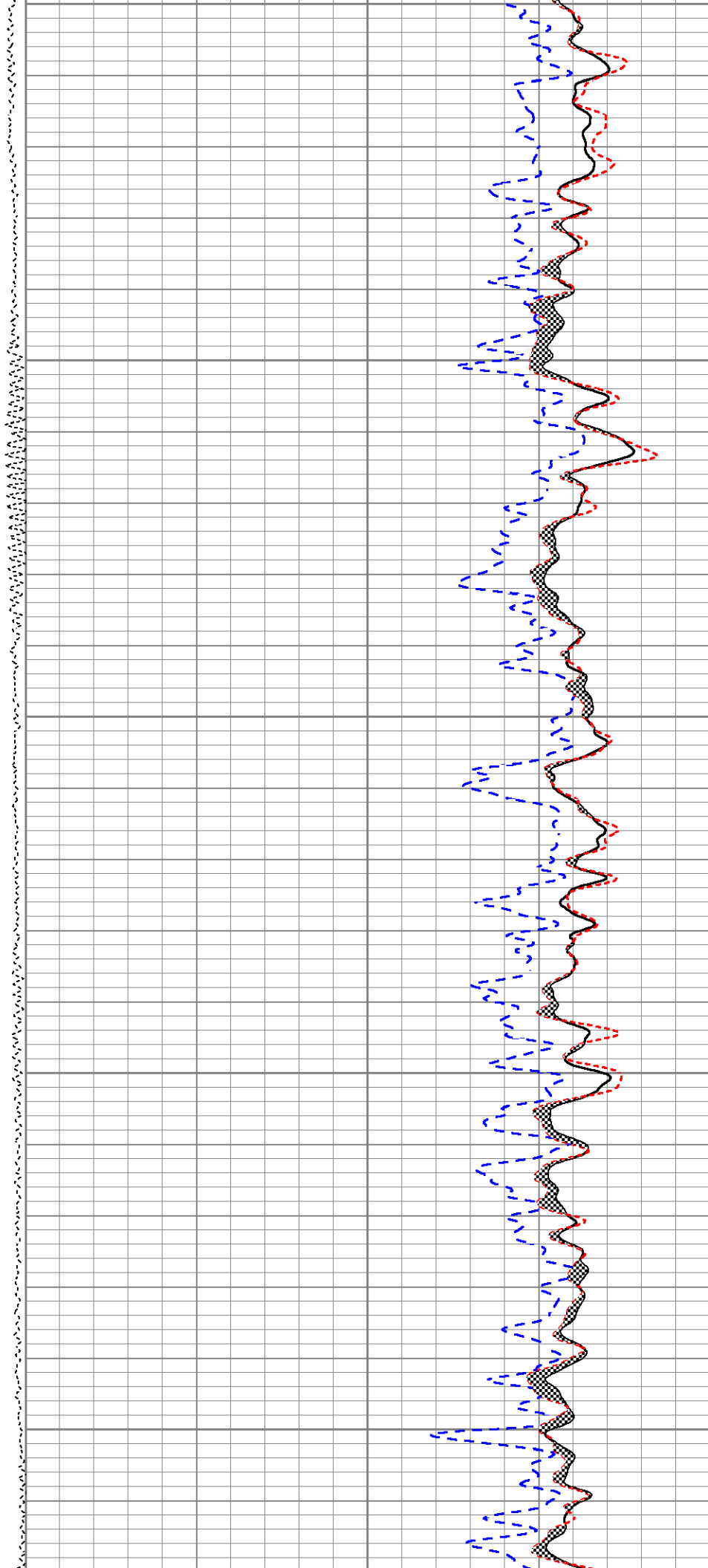
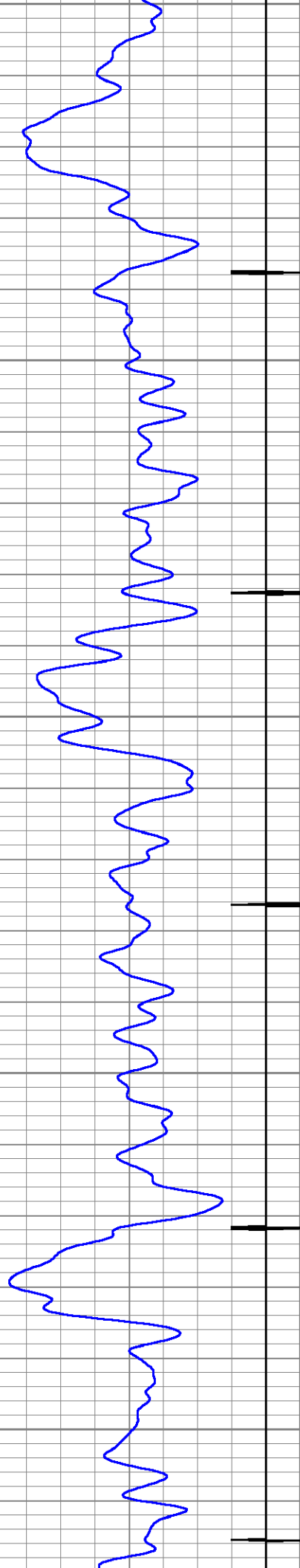
2400

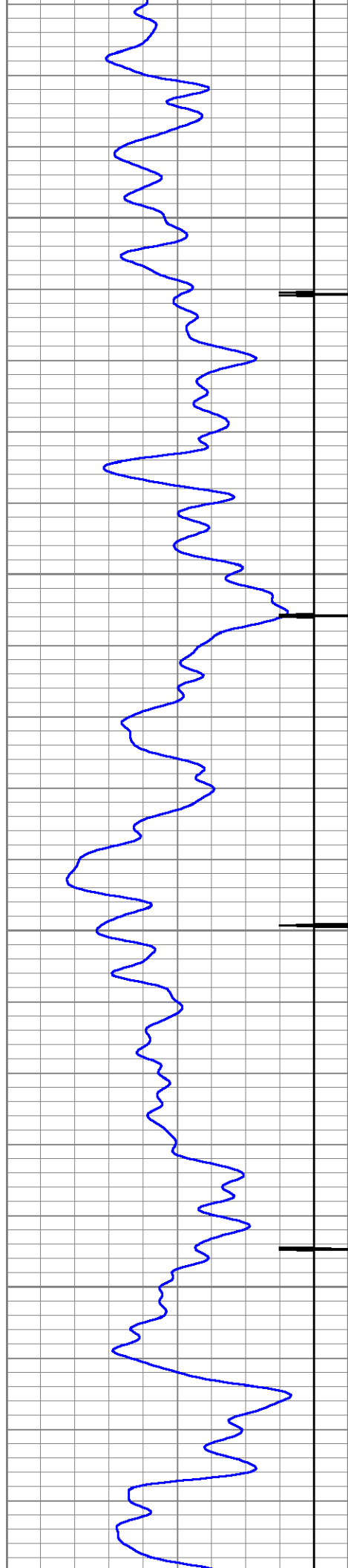


2400

2500

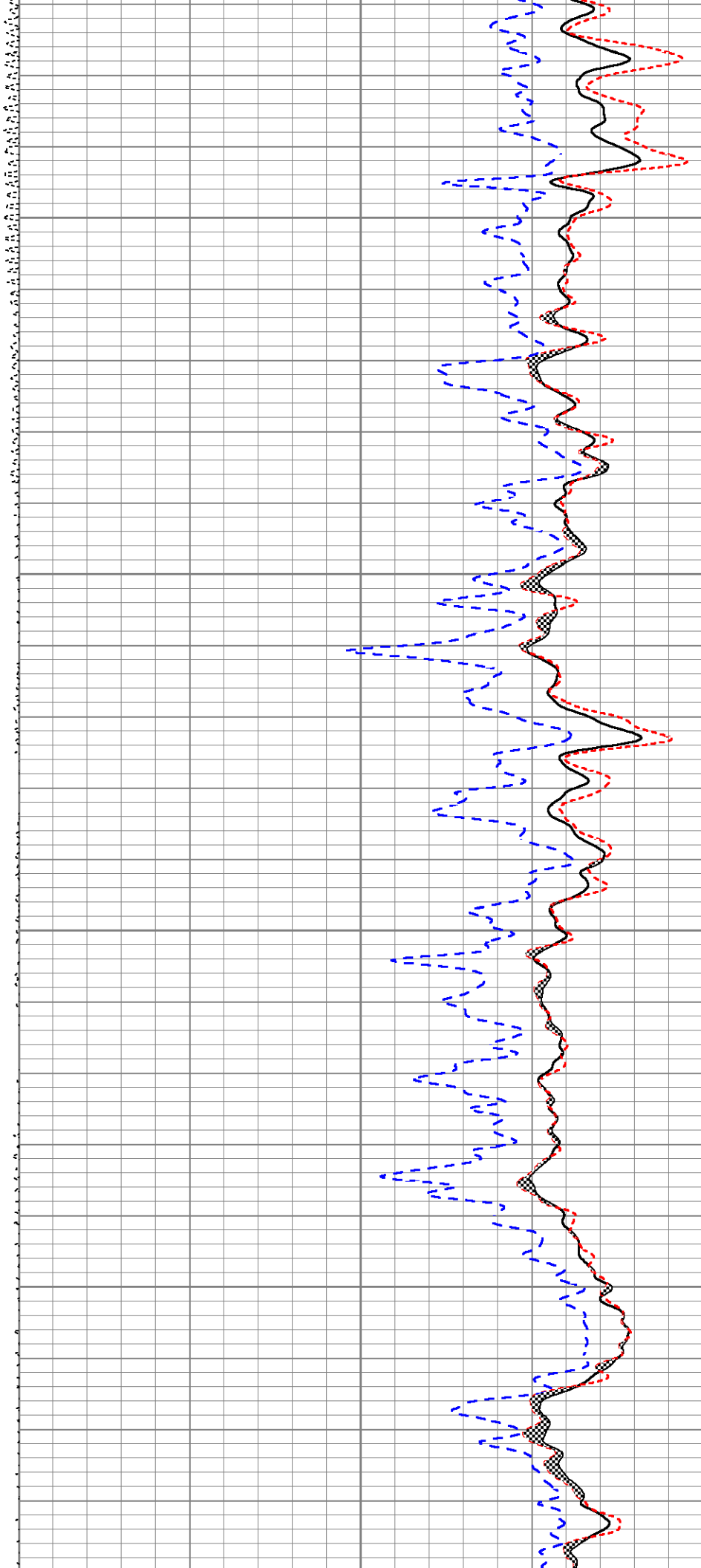
2600

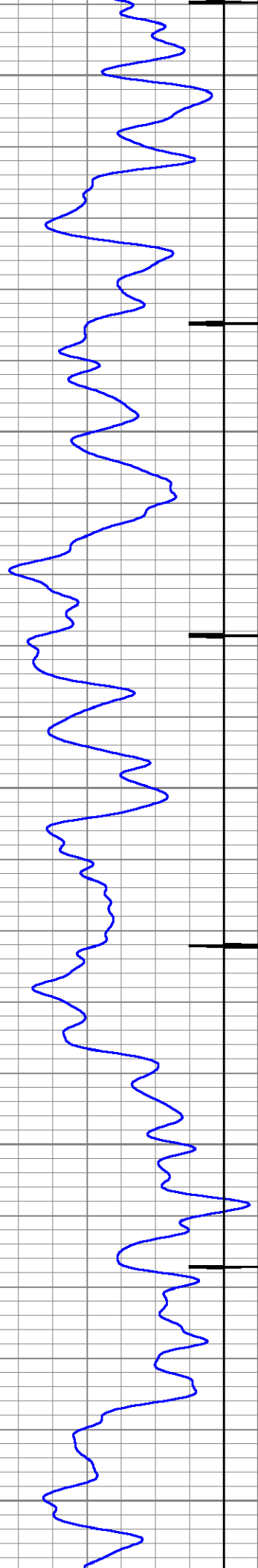




2700

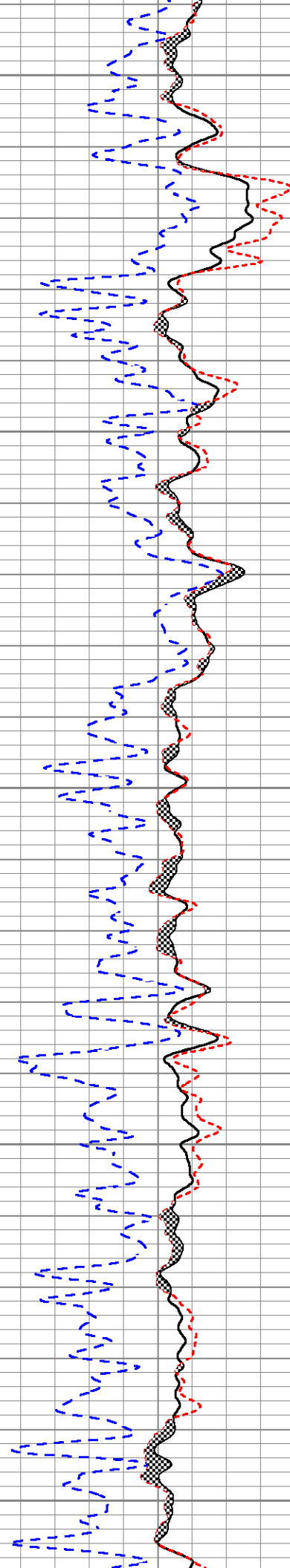
2800

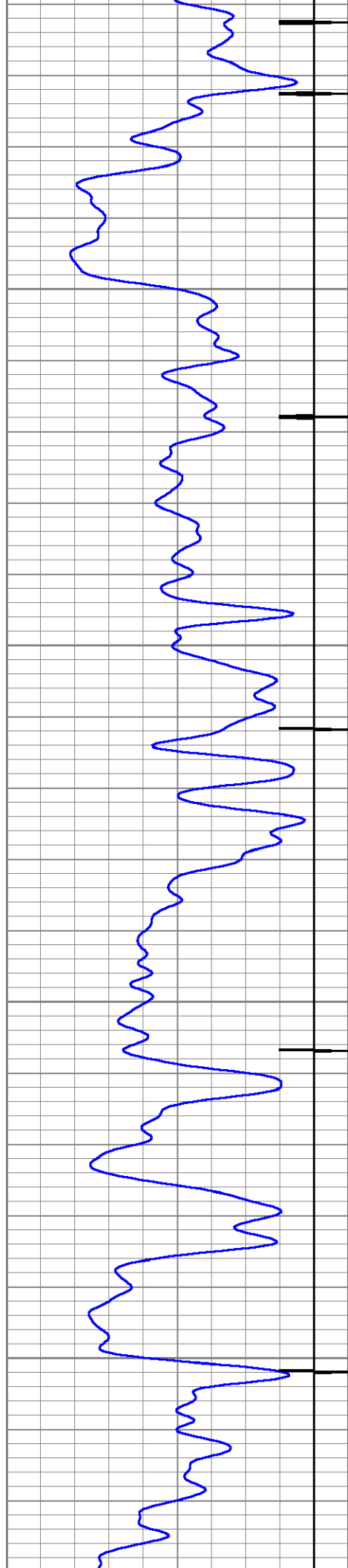




2900

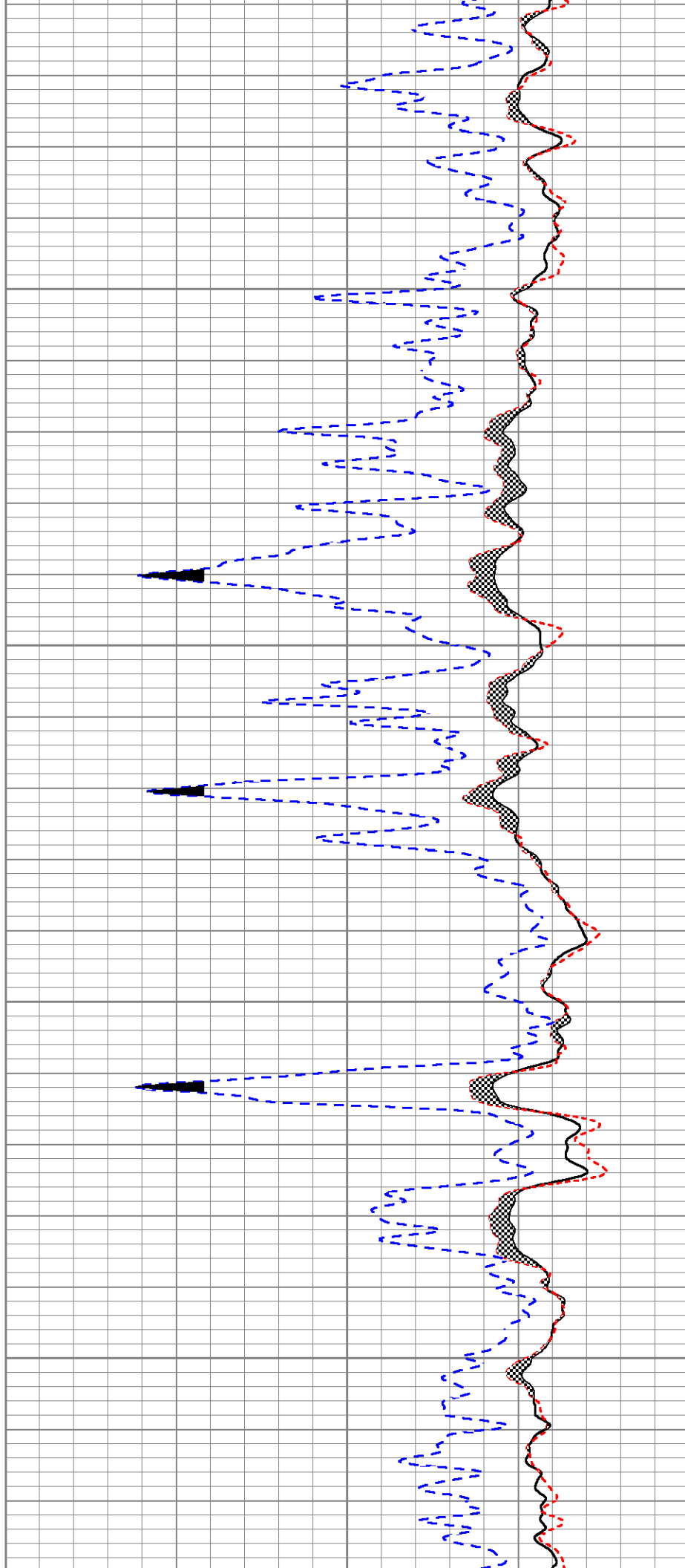
3000

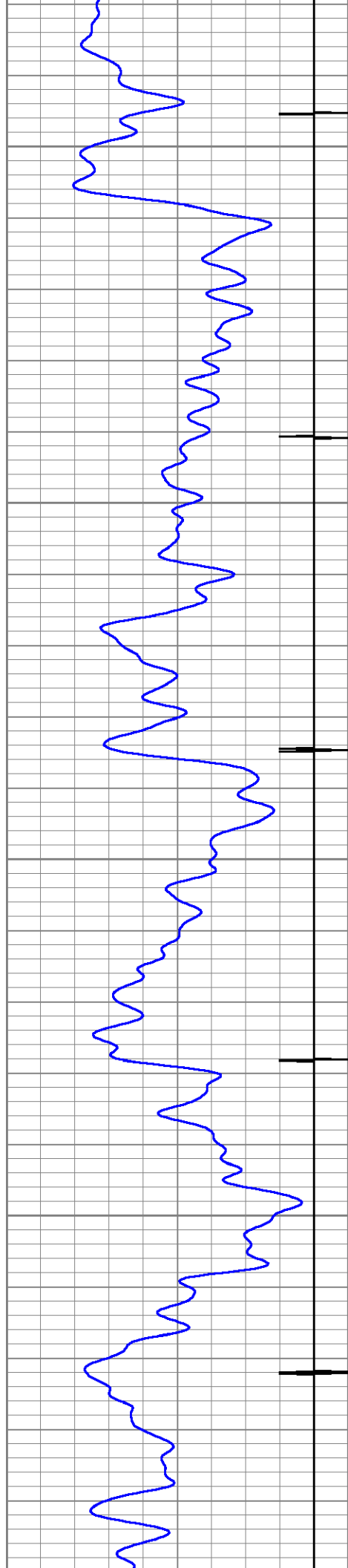




3100

3200

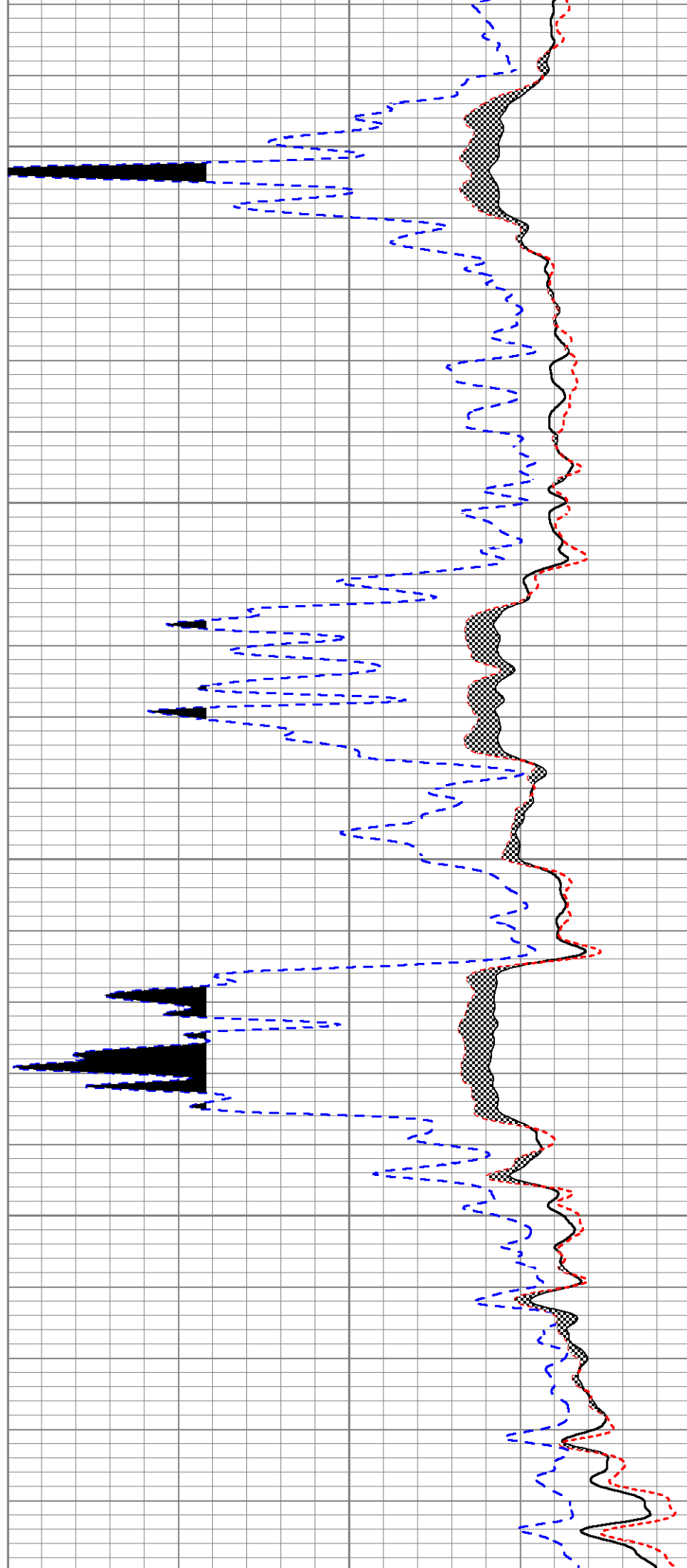


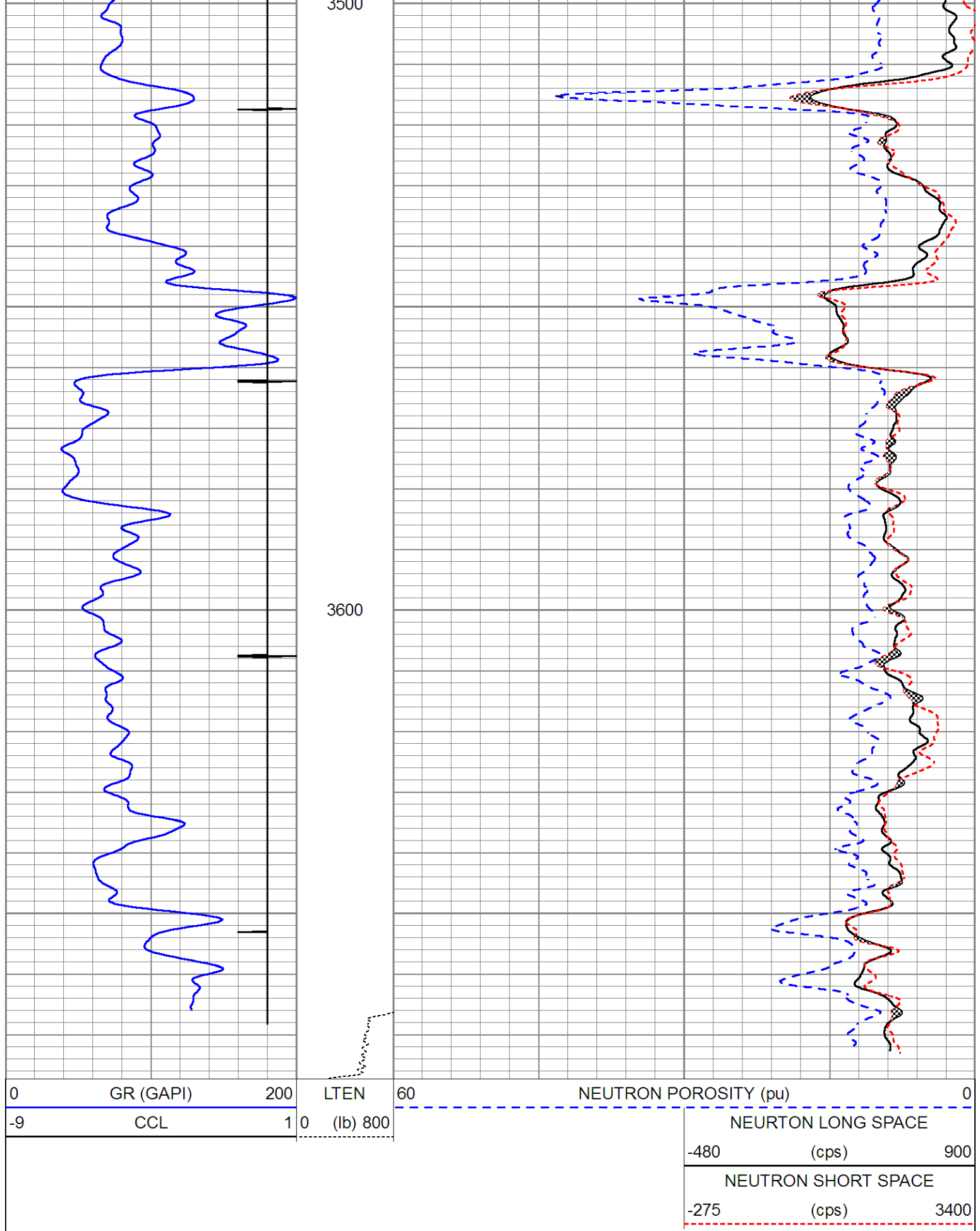


3300

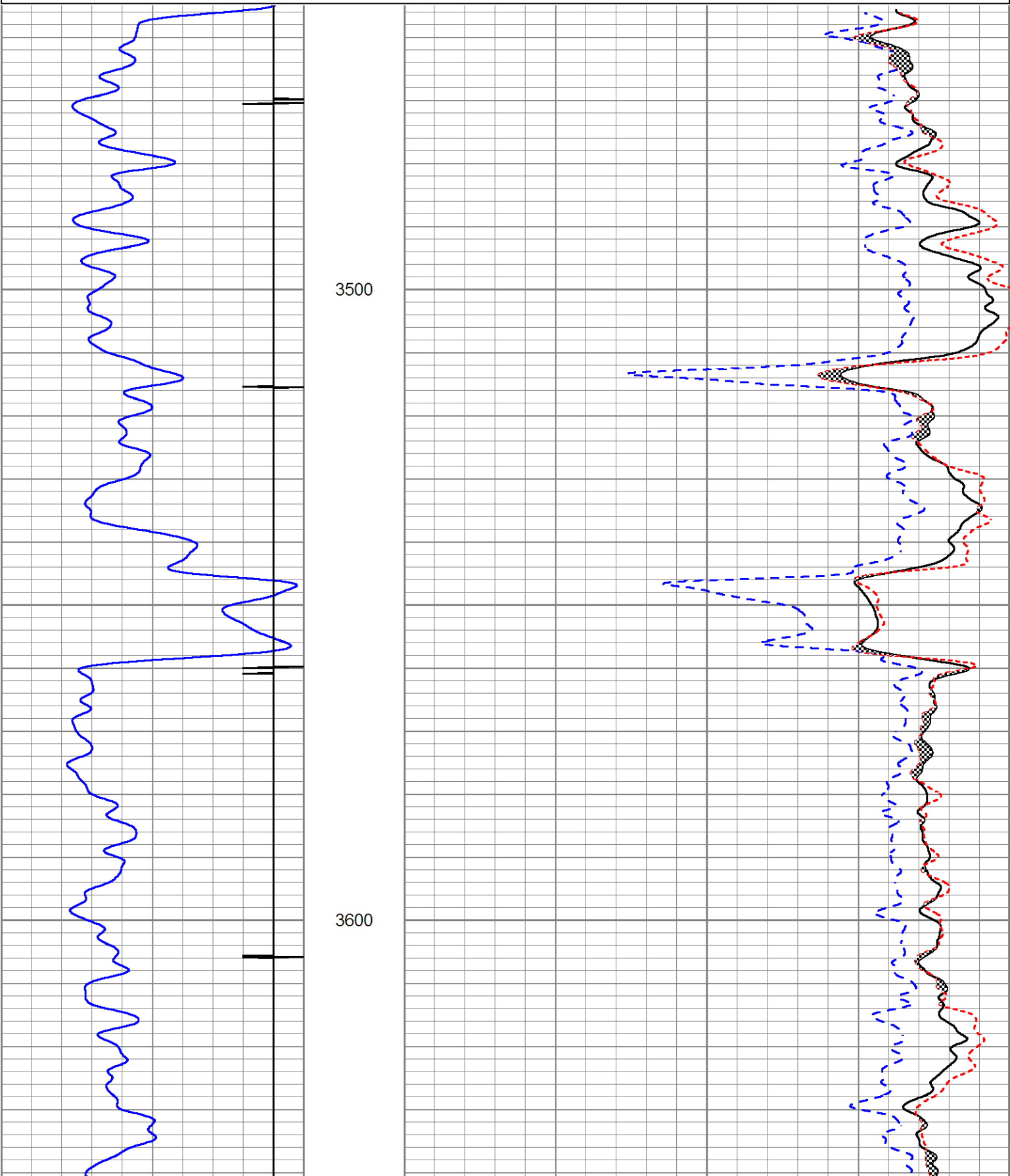
3400

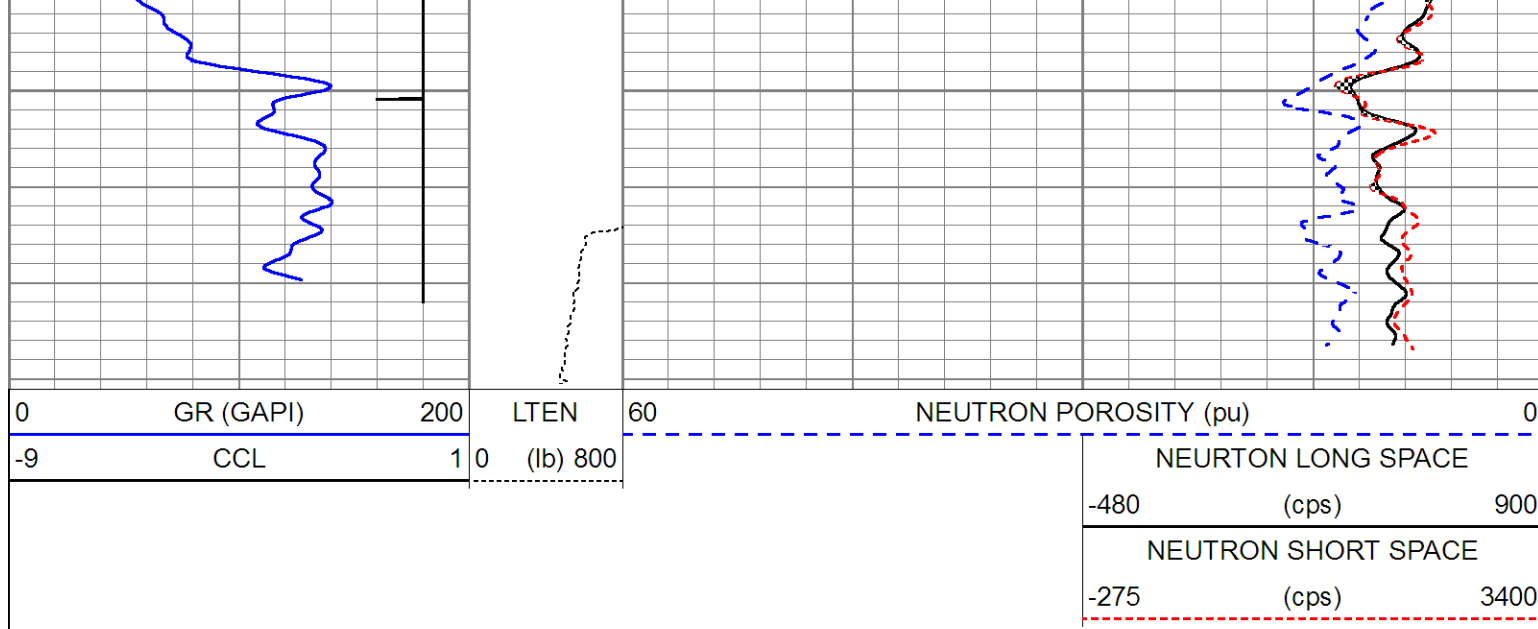
3500





0	GR (GAPI)	200	LTEN	60	NEUTRON POROSITY (pu)		0
-9	CCL	1 0	(lb) 800	NEURTON LONG SPACE			
				-480	(cps)	900	
				NEUTRON SHORT SPACE			
				-275	(cps)	3400	





Calibration Report						
Database File	e:\tribal bk 2\southern ute tribal bk 2.db					
Dataset Pathname	pass8.2					
Dataset Creation	Wed Feb 15 12:46:53 2017					
Compensated Neutron Calibration Report						
			Serial Number:		090117	
			Tool Model:		Probe_B	
CALIBRATION			Fri Jan 30 17:39:55 2009			
	Detector	Readings		Target		Normalization
	Short Space	4094.93	cps	0.00	cps	1.0000
	Long Space	775.82	cps	0.00	cps	1.0000
PRE-SURVEY VERIFICATION						
	Detector	Readings		Measured		Target
1)	Short Space	cps				
	Long Space	cps		pu	pu	
2)	Short Space	cps				
	Long Space	cps		pu		
3)	Short Space	cps				
	Long Space	cps		pu		
POST-SURVEY VERIFICATION						
	Detector	Readings		Measured		Target
1)	Short Space	cps				
	Long Space	cps		pu	pu	
2)	Short Space	cps				
	Long Space	cps		pu	pu	
3)	Short Space	cps				
	Long Space	cps		pu	pu	
Gamma Ray Calibration Report						
			Serial Number:			

Tool Model: Probe
 Performed: Mon Feb 13 13:19:17 2017
 Calibrator Value: 1.0 GAPI
 Background Reading: 0.0 cps
 Calibrator Reading: 1.0 cps
 Sensitivity: 1.0000 GAPI/cps

Segmented Cement Bond Log Calibration Report

Serial Number: 1308-02
 Tool Model: Probe
 Calibration Casing Diameter: 5.500 in
 Calibration Depth: 456.019 ft

Master Calibration, performed Wed Feb 15 09:10:46 2017:

	Raw (v)		Calibrated (mv)		Results	
	Zero	Cal	Zero	Cal	Gain	Offset
3'	0.004	0.699	0.000	71.921	103.468	-0.408
CAL	0.003	1.038				
5'	0.004	0.523	0.000	71.921	138.803	-0.618
SUM						
S1	-0.002	0.687	0.000	100.000	145.156	0.223
S2	0.005	0.708	0.000	100.000	142.289	-0.670
S3	0.004	0.778	0.000	100.000	129.234	-0.558
S4	0.004	0.755	0.000	100.000	133.058	-0.523
S5	0.005	0.734	0.000	100.000	137.169	-0.623
S6	0.004	0.691	0.000	100.000	145.566	-0.593
S7	0.004	0.667	0.000	100.000	150.835	-0.580
S8	0.004	0.691	0.000	100.000	145.398	-0.541

Internal Reference Calibration, performed Wed Oct 05 11:57:18 2016:

	Raw (v)		Calibrated (v)		Results	
	Zero	Cal	Zero	Cal	Gain	Offset
CAL	0.000	0.000	0.003	1.038	1.000	0.000

Air Zero Calibration, performed Wed Feb 15 08:56:14 2017:

	Raw (v)		Calibrated (v)		Results	
	Zero		Zero		Offset	
3'	0.000		0.000		0.000	
5'	0.000		0.000		0.000	
SUM						
S1	0.000		0.000		0.000	
S2	0.000		0.000		0.000	
S3	0.000		0.000		0.000	
S4	0.000		0.000		0.000	
S5	0.000		0.000		0.000	
S6	0.000		0.000		0.000	
S7	0.000		0.000		0.000	
S8	0.000		0.000		0.000	