

Construction and Stormwater Inspection

May 2, 2017

Operator: FIFTH CREEK ENERGY OPERATING COMPANY LLC- #10629

Location ID: 444164

Weld County, CO

SESE Section 15 T11N R63W

Chris Binschus
Reclamation Specialist, COGCC



COLORADO
Oil & Gas Conservation
Commission

Department of Natural Resources

Inspection Photos
Location Name: Critter Creek /15
Location ID: 444164



Photo 1. Photo taken from the northeastern location, facing South. Ditch and berm BMP has been installed around the entire perimeter of the location. Berm material does not appear to be sufficiently stabilized to prevent unconsolidated soil material from leaving location.



Photo 2. Photo taken from the northeastern location, facing West. Ditch and berm BMP has been installed around the entire perimeter of the location. Berm material does not appear to be sufficiently stabilized to prevent unconsolidated soil material from leaving location. Topsoil stockpile stored along the northern perimeter of the location.

Inspection Photos
Location Name: Critter Creek /15
Location ID: 444164



Photo 3. Photo taken from the northwestern location, facing West. Ditch and berm BMP has been installed around the entire perimeter of the location. Berm material does not appear to be sufficiently stabilized to prevent unconsolidated soil material from leaving location. Topsoil stockpile stored along the northern perimeter of the location.



Photo 4. Photo taken from the western location, facing South. Ditch and berm BMP has been installed around the entire perimeter of the location. Berm material does not appear to be sufficiently stabilized to prevent unconsolidated soil material from leaving location.

Inspection Photos
Location Name: Critter Creek /15
Location ID: 444164



Photo 5. Photo taken from the southwestern location, facing East. Ditch and berm BMP has been installed around the entire perimeter of the location. Berm material does not appear to be sufficiently stabilized to prevent unconsolidated soil material from leaving location. BMP maintenance may be required along portions of the ditch BMP as sediment appears to be accumulating in the ditch BMP.

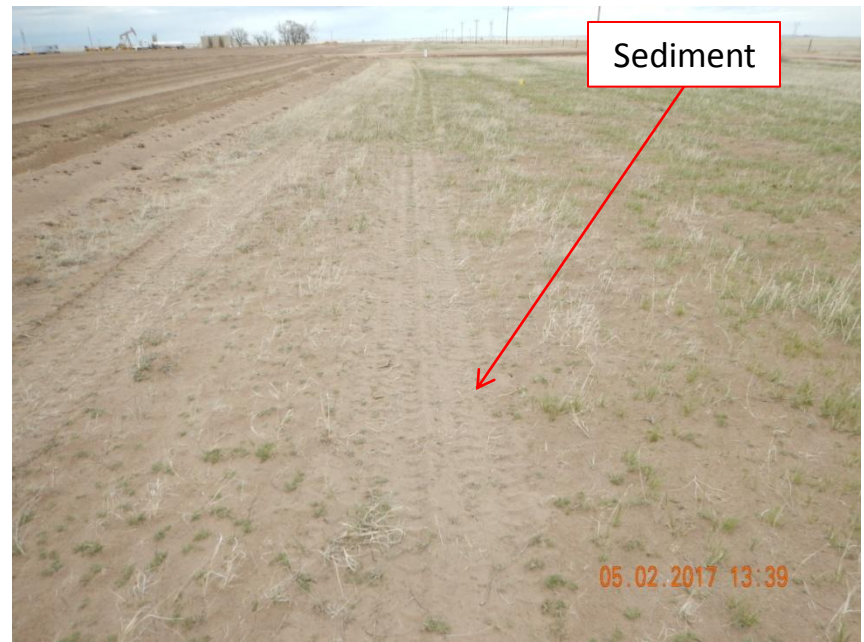


Photo 6. Photo taken approximately two meters from the southern perimeter of the location, facing East. Sediment material from the location appears to be accumulating along portions off location along the southern perimeter due to wind erosion.

Inspection Photos
Location Name: Critter Creek /15
Location ID: 444164



Photo 7. Photo taken from the southeastern location, facing East. Ditch and berm BMP has been installed around the entire perimeter of the location. Berm material does not appear to be sufficiently stabilized to prevent unconsolidated soil material from leaving location. BMP maintenance may be required along portions of the ditch BMP as sediment appears to be accumulating in the ditch BMP.



Photo 8. Photo taken from the southeast location, facing West. Ditch and berm BMP has been installed around the entire perimeter of the location. Berm material does not appear to be sufficiently stabilized to prevent unconsolidated soil material from leaving location. This photo illustrates how some of that material is starting to spread out.

Inspection Photos
Location Name: Critter Creek /15
Location ID: 444164



Photo 9. Photo taken from the southeast location, facing North. Ditch and berm BMP has been installed around the entire perimeter of the location. Berm material does not appear to be sufficiently stabilized to prevent unconsolidated soil material from leaving location.



Photo 10. Photo taken from the entrance of the location, facing South. Gravel has been installed at the entrance of location.