

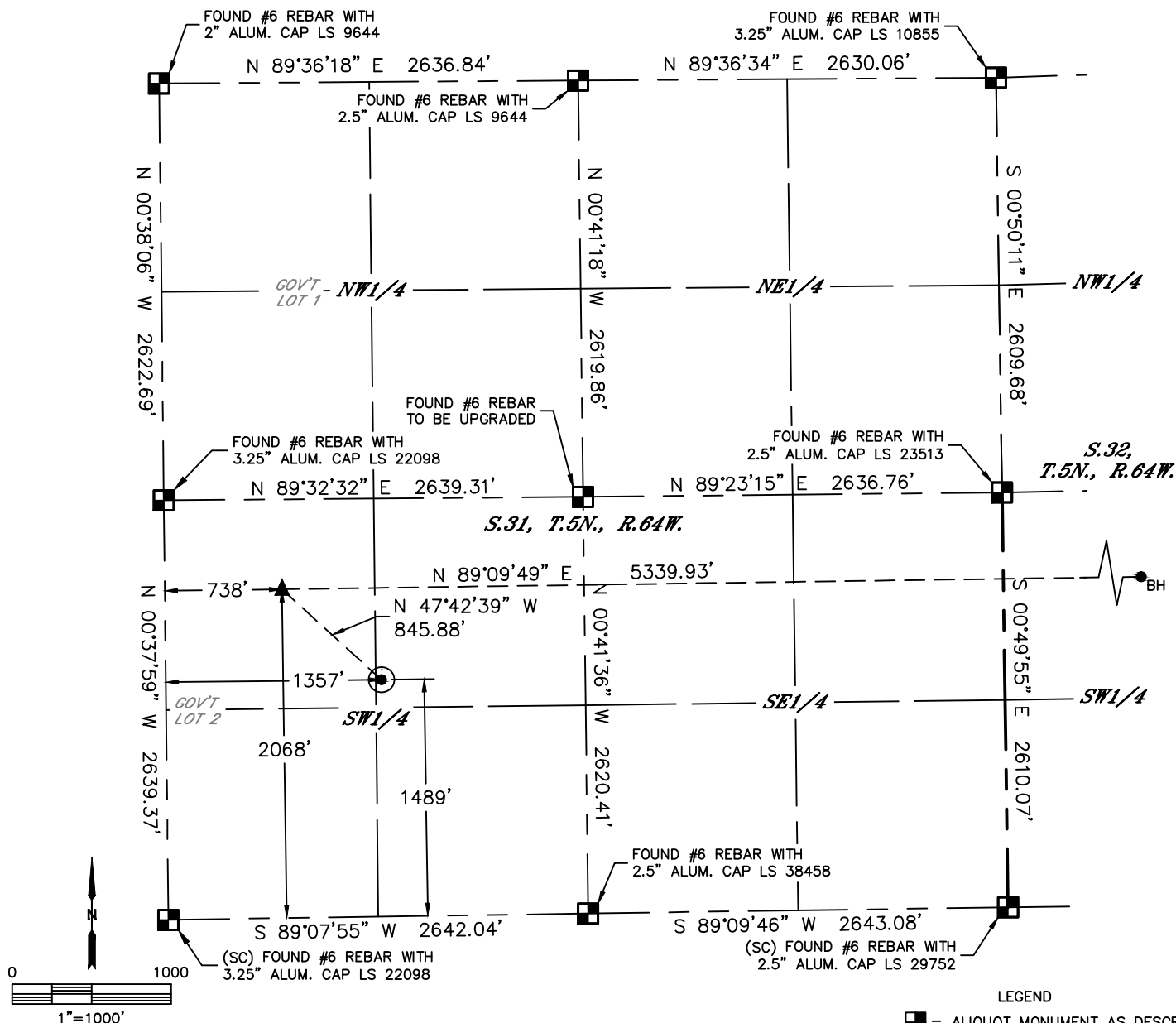


Lat40°, Inc. 6250 W. 10th Street, Unit 2, Greeley, CO 970-515-5294

WELL LOCATION CERTIFICATE

THISTLE DOWN 31G-232

SECTION: 31
TOWNSHIP: 5N
RANGE: 64W
6TH. P.M.
WELD COUNTY, CO



LEGEND

- = ALIQUOT MONUMENT AS DESCRIBED
- = CALCULATED POSITION
- = SURFACE HOLE LOCATION (SHL)
- ▲ = ENTRY POINT LOCATION (EP)
- BH = BOTTOM HOLE LOCATION (BHL)
- ⊙ = EXISTING WELL
- ⊙ = ABANDONED WELL

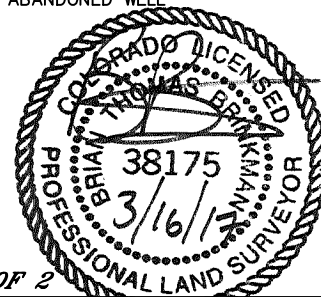
CLIENT: PDC ENERGY, INC.				LANDMAN: JEFF HINDMARSH			
INSTRUMENT OPERATOR: BRIAN ROTTINGHAUS				SURVEY DATE: 12/7/2016		SURFACE USE: RANGELAND	
SHL FOOTAGE	SHL LAT°	SHL LONG°	SHL PDOP	SHL ELEV (FT.)	SHL 1/4/1/4	SHL S-T-R	
1489	FSL	1357	FWL	40.35252	-104.59717	1.2	4805
							NESW
							31-5-64

BHL FOOTAGE	BHL LAT°	BHL LONG°	BHL S-T-R	EP LAT°	EP LONG°	EP S-T-R
2068	FSL	800	FWL	40.35416	-104.58024	32-5-64
				40.35410	-104.59939	31-5-64

NOTE:

- Bearings shown are Grid Bearings of the Colorado State Plane Coordinate System, North Zone, North American Datum 1983. The lineal dimensions as contained herein are based upon the "U.S. Survey Foot."
- Distances to section lines measured at 90 degrees from said section lines.
- Ground elevations are based on an observed GPS elevation (NAVD 1988 DATUM).
- Latitude and Longitude shown are (NAD 83 DATUM).
- IMPROVEMENTS: See LOCATION DRAWING for all visible improvements within 500' of oil and gas location.
- This map does not represent a boundary survey.

NEAREST CULTURAL ITEMS	
BUILDING	±1284' SW
BUILDING UNIT	±1284' SW
HIGH OCCUPANCY BUILDING UNIT	5280'+
DESIGNATED OUTSIDE ACTIVITY AREA	5280'+
PUBLIC ROAD (COUNTY ROAD 49)	±1338' W
ABOVE GROUND UTILITY	±1108' N
RAILROAD	5280'+
PROPERTY LINE	±484' N



SHEET 1 OF 2

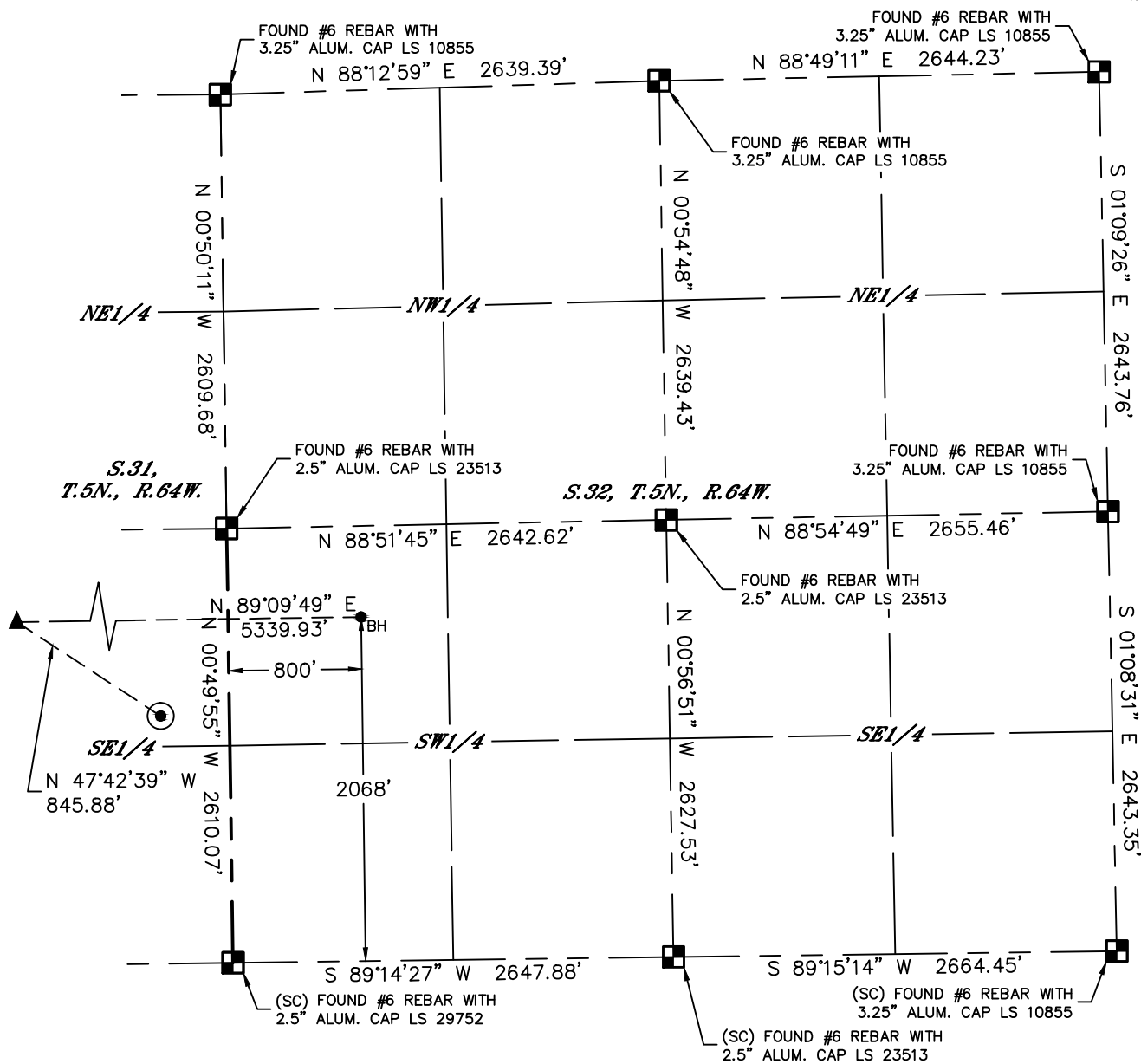
Brian T. Brinkman—On behalf of Lat40°, Inc.
Colorado Licensed Professional Land Surveyor No. 38175
DATE: 3/16/2017
PROJECT#: 2016074

Lat40°, Inc. 6250 W. 10th Street, Unit 2, Greeley, CO 970-515-5294








WELL LOCATION CERTIFICATE

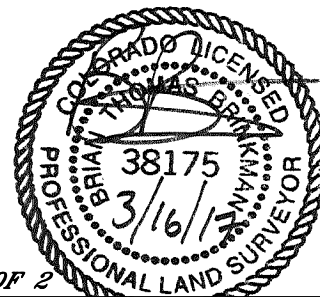
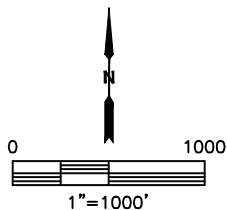
THISTLE DOWN 31G-232

SECTION: 31
TOWNSHIP: 5N
RANGE: 64W
6TH. P.M.
WELD COUNTY, CO



LEGEND

-  = ALIQUOT MONUMENT AS DESCRIBED
 = CALCULATED POSITION
 = SURFACE HOLE LOCATION (SHL)
 = ENTRY POINT LOCATION (EP)
 = BOTTOM HOLE LOCATION (BHL)
 = EXISTING WELL
 = ABANDONED WELL



SHEET 2 OF 2

Brian T. Brinkman—On behalf of BGS, Inc.
Colorado Licensed Professional Land Surveyor No. 38175
DATE: 3/16/2017
PROJECT#: 2016074