

BAKER HUGHES				LWD MEMORY LOG			
Gamma Ray							
Scale:		Company: Noble Energy					
1:240 MD		Well: Benelli Federal LC22-765					
Depth Reference:		Field: Weld County(Noble NAD 83 Grid)					
Driller's Depth		County: Weld		State: Colorado			
Status:		Surface Location:		Other Services:			
Final Print		Latitude:		Directional			
API No: 05-123-42975-00		Longitude:					
Job ID: 8300301		UTM: N/A		N/A			
		SEC: 22		TWN: 9N		RGE: 59W	
Permanent Datum (P.D.): Ground Level		Elevation:		4916.00 ft		KB: N/A	
Log Measured From: Rig Floor		Above P.D.		30.00 ft		DF: 4946.00 ft	
						GL: 4916.00 ft	
Dates		Interval Logged		Magnetic Field Reference			
Date From: 2017-02-25		Top: (ft) 1919.00		Azi Reference North: Grid		Dip Angle: (deg) 67.09	
Date To: 2017-02-27		Bottom: (ft) 10866.00		Total Magnetic Field Strength: (nT)		52670	
Spud Date: 2017-02-24				Mag to Reference North Correction: (deg)		6.70 E	
Borehole Record				Casing Record			
Hole Size (in)		From (ft)		To (ft)		Size (in)	
13.500		30.00		1919.00		9.625	
8.500		1919.00		10866.00			
		</					

Service and Tool Mnemonics

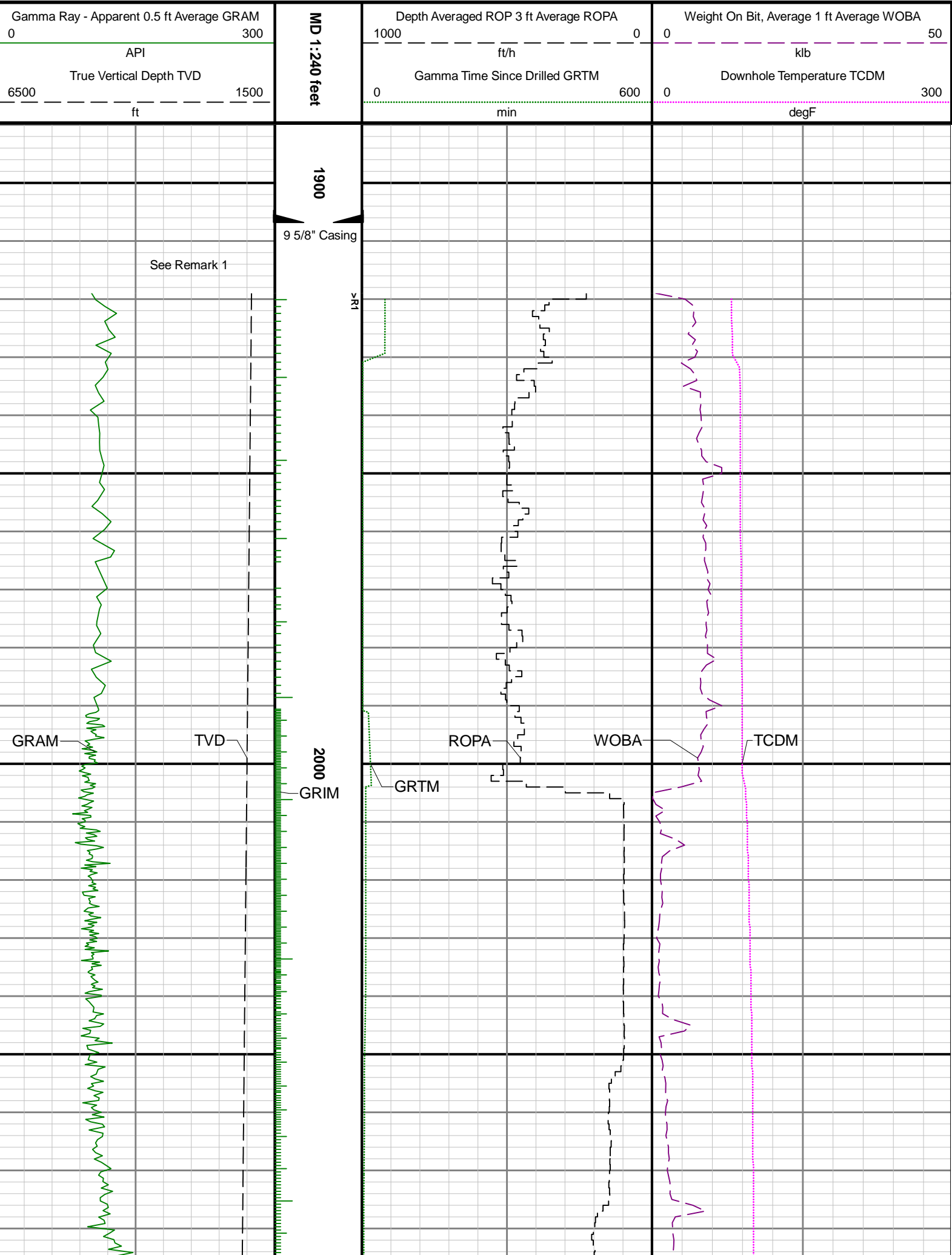
Mnemonic	Name	Description
ATC_SU	ATC_SU	Auto Trak Curve Steering Unit
ATC_MWD	ATC_MWD	Auto Trak Curve MWD
ATC_LCPM	ATC_LCPM	Auto Trak Curve LCPM

Comments

- 1
- Depth measurements were obtained from a depth control system not supplied or operated by Baker Hughes. Due to the lack of control by Baker Hughes, depth calibrations and measurements could not be independently verified.
- 2
- Baker Hughes LWD run 1 utilized a 6.75 inch NaviGamma (Directional and Gamma Ray) services behind a 8.5 inch bit and rotary steerable assembly from 1919 to 10866 feet MD (1919 to 6028 feet TVD).

Remarks

Number	Measured Depth (ft)	Hole Section (in)	Run No.	Remark
1	1919.00	8.500	1	Gamma Ray logging operations began at 1919 feet MD (1919 feet TVD).

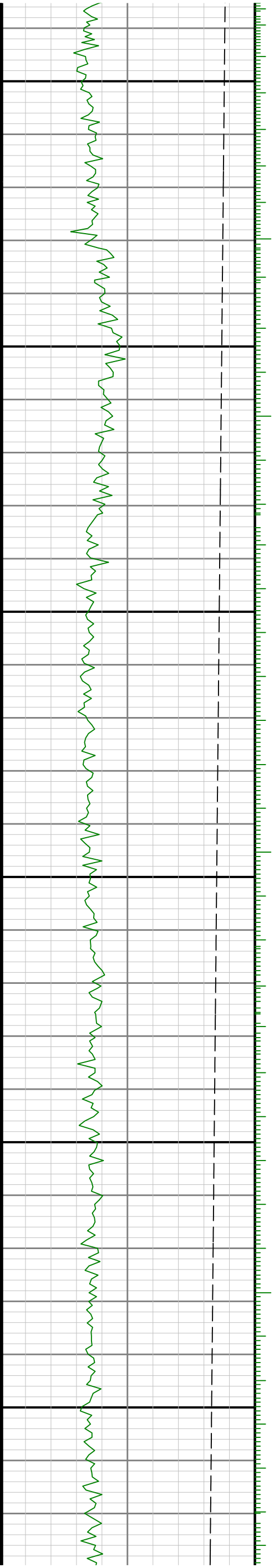


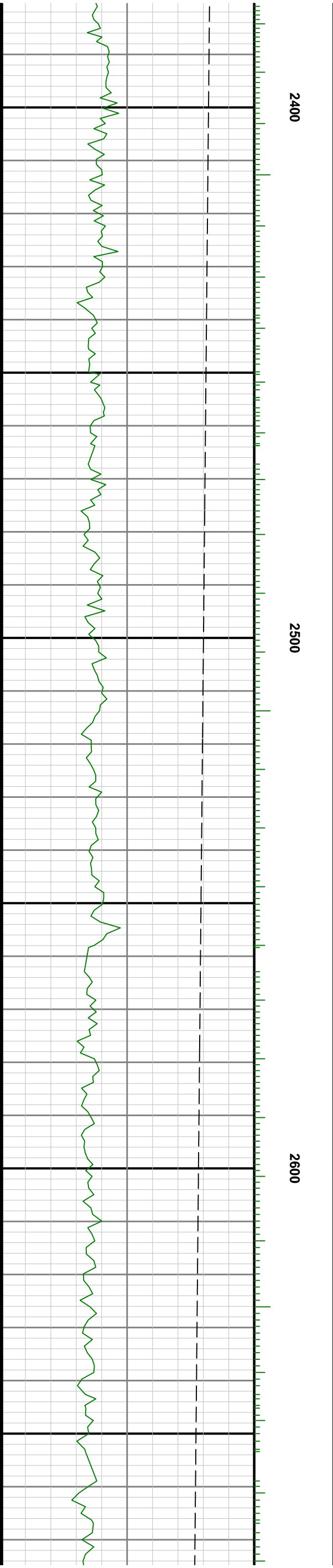


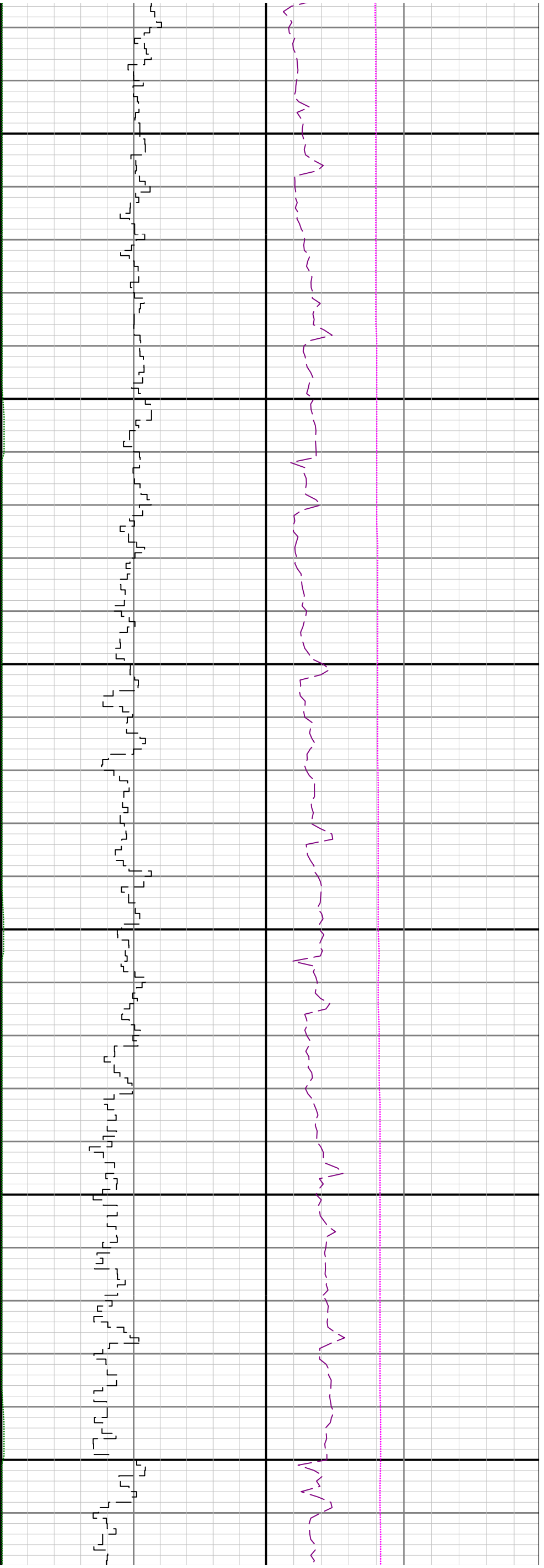
2100

2200

2300



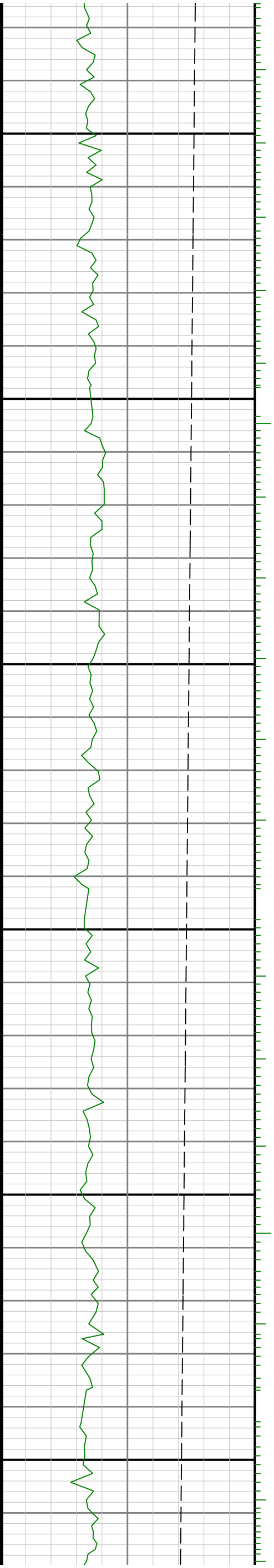


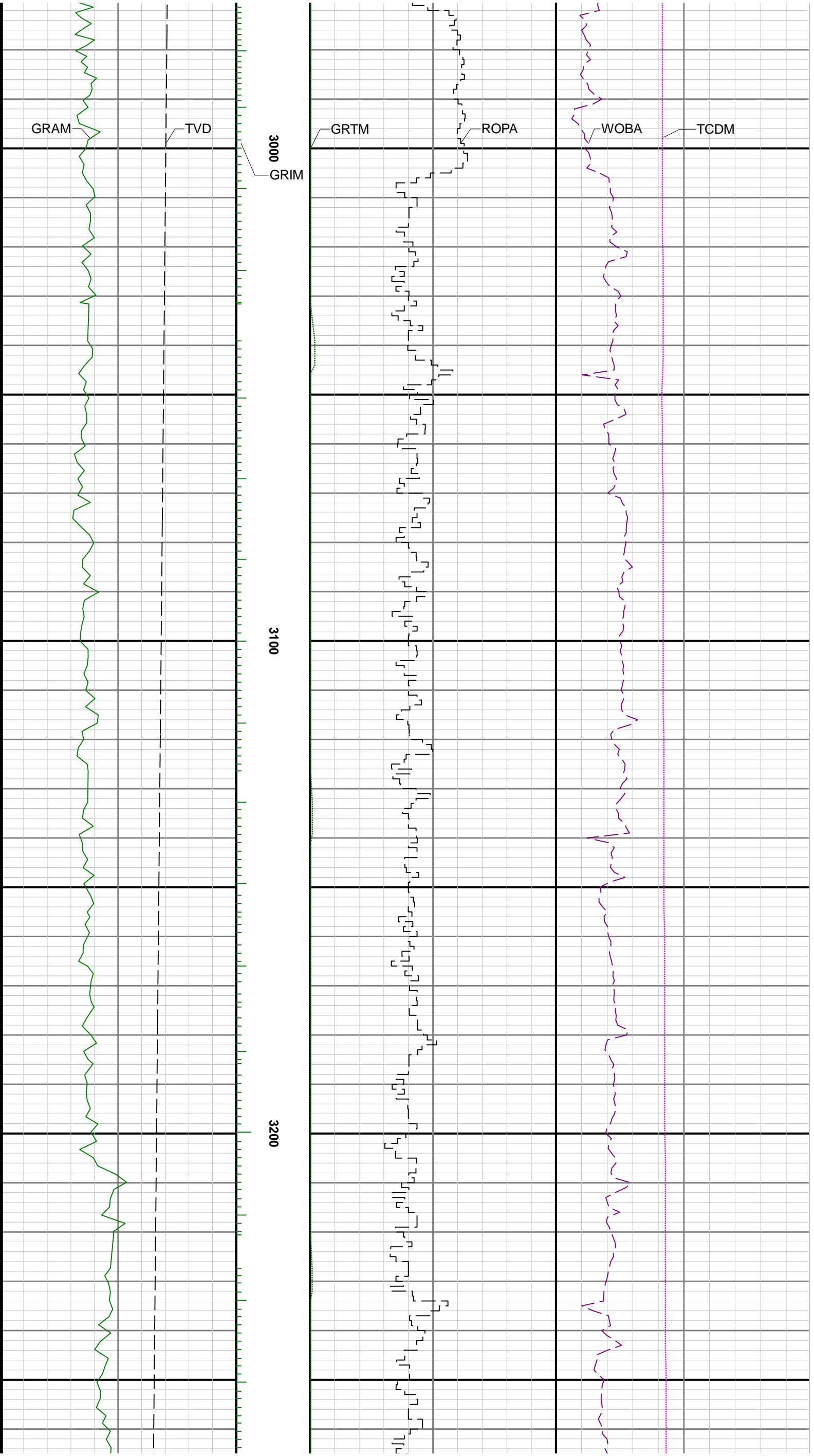


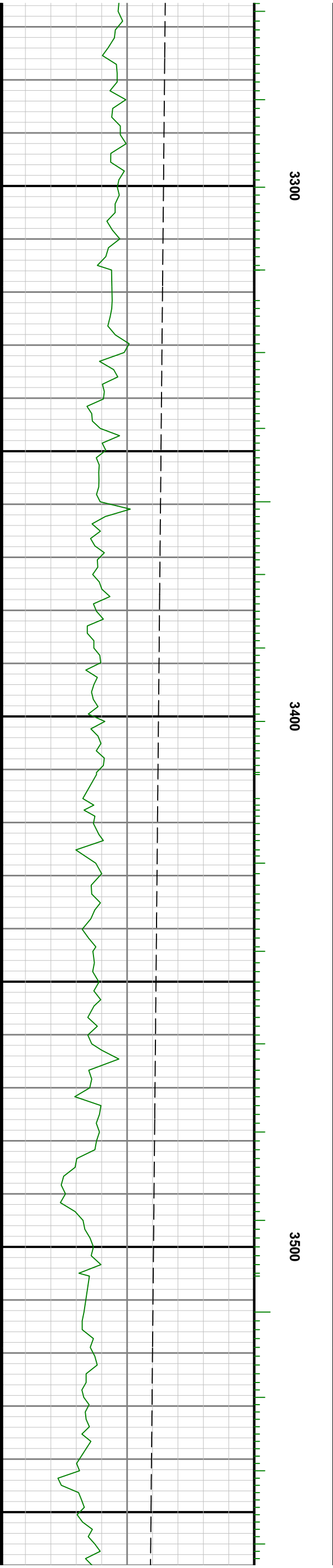
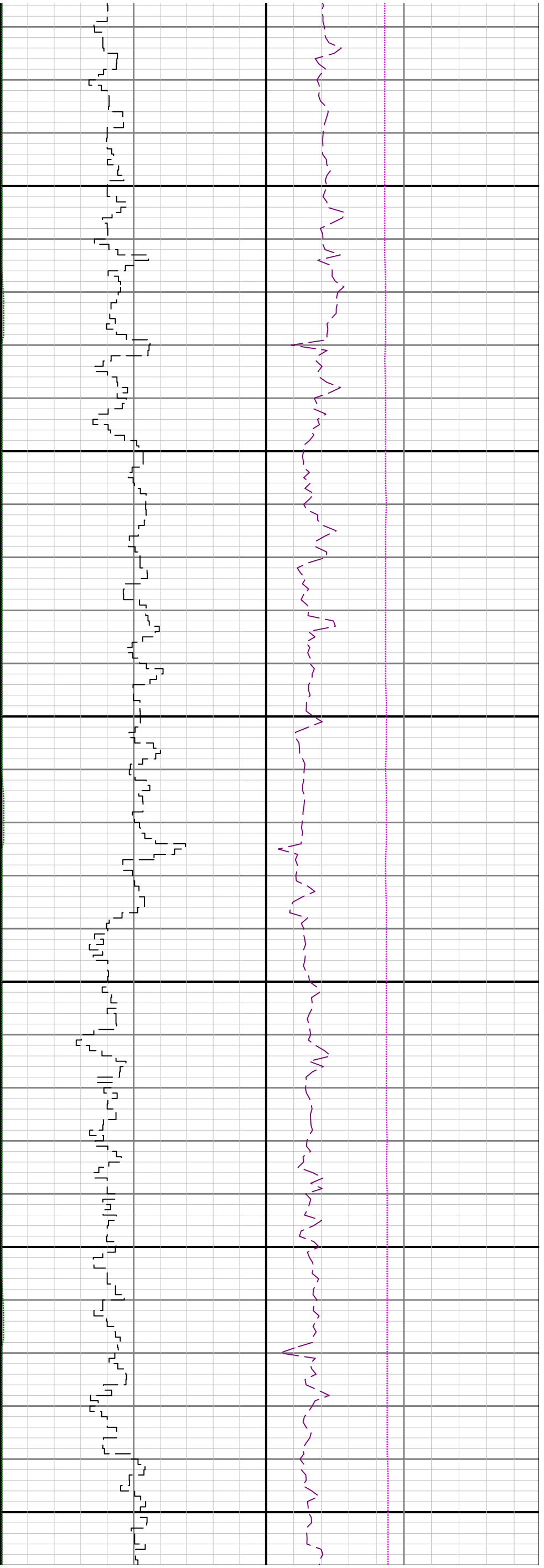
2700

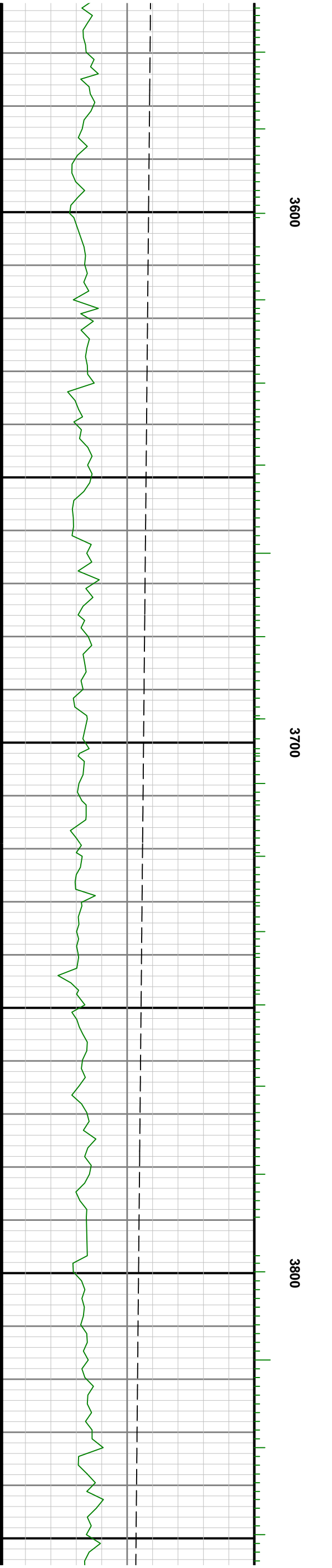
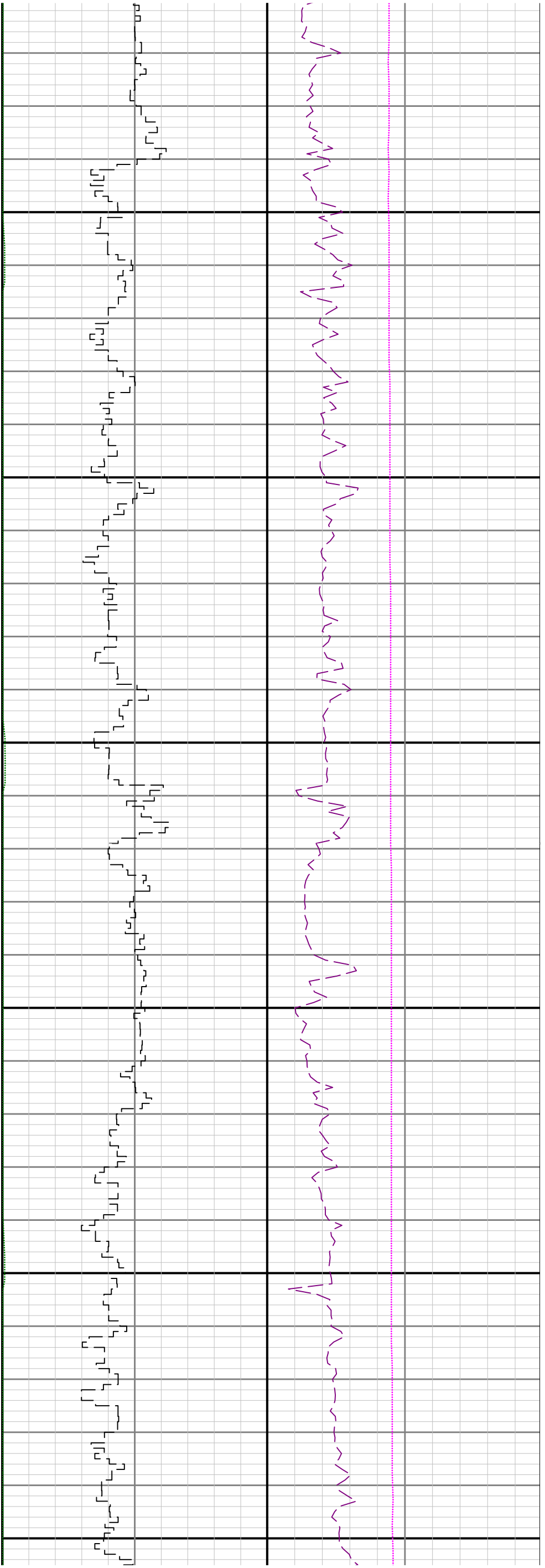
2800

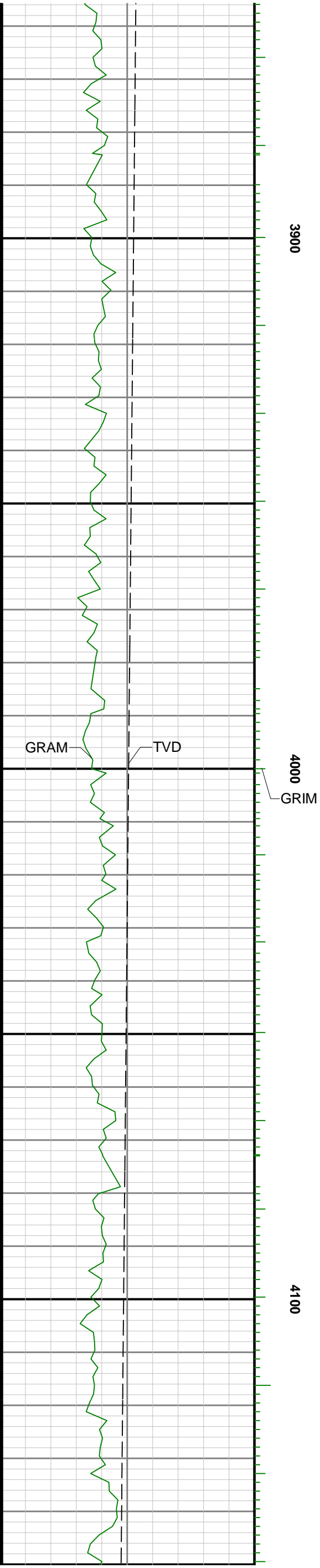
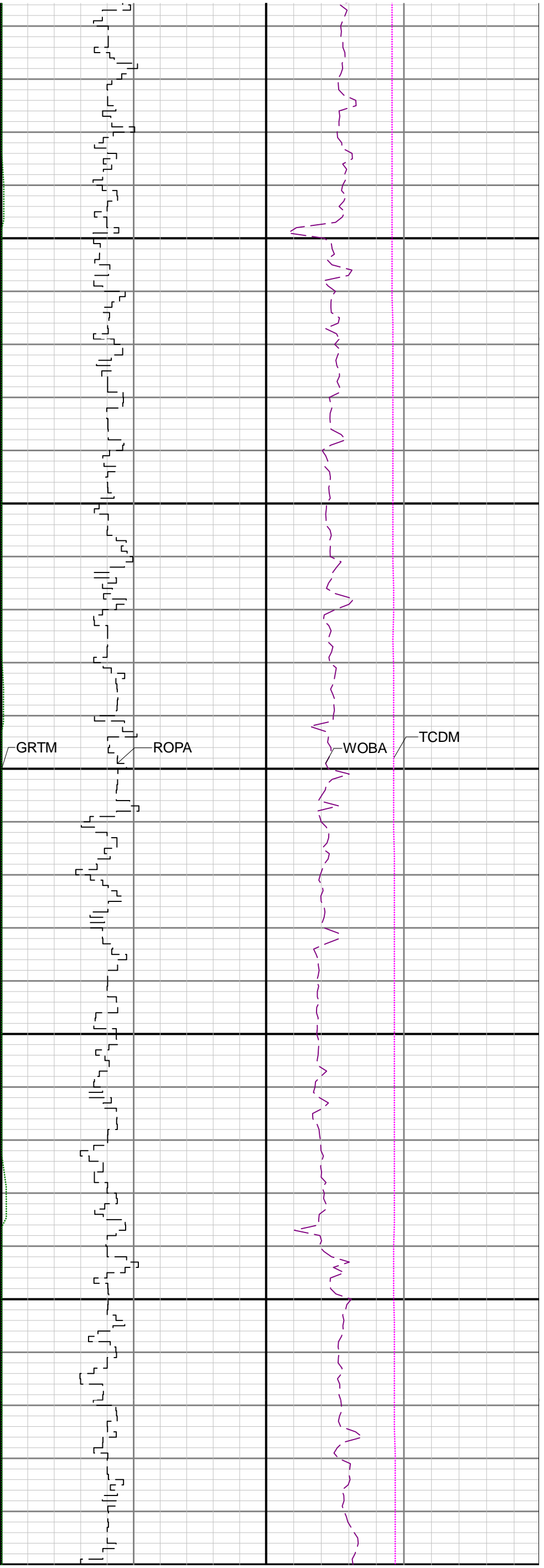
2900

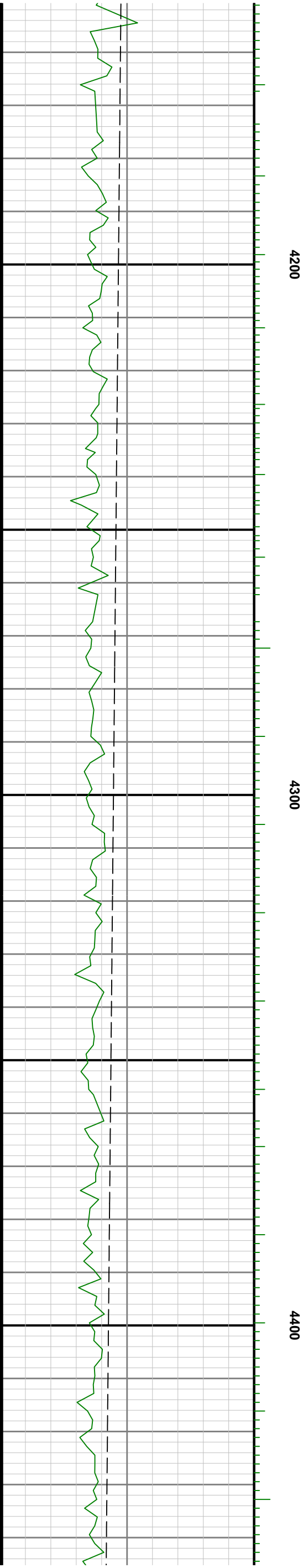
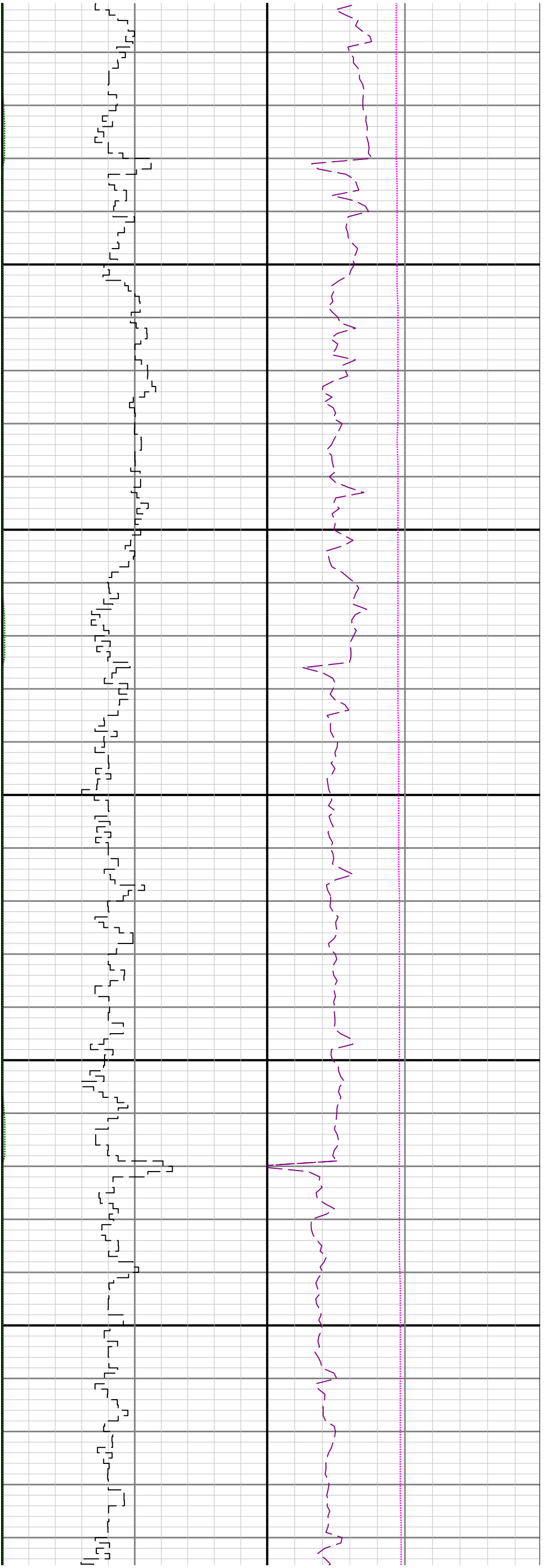


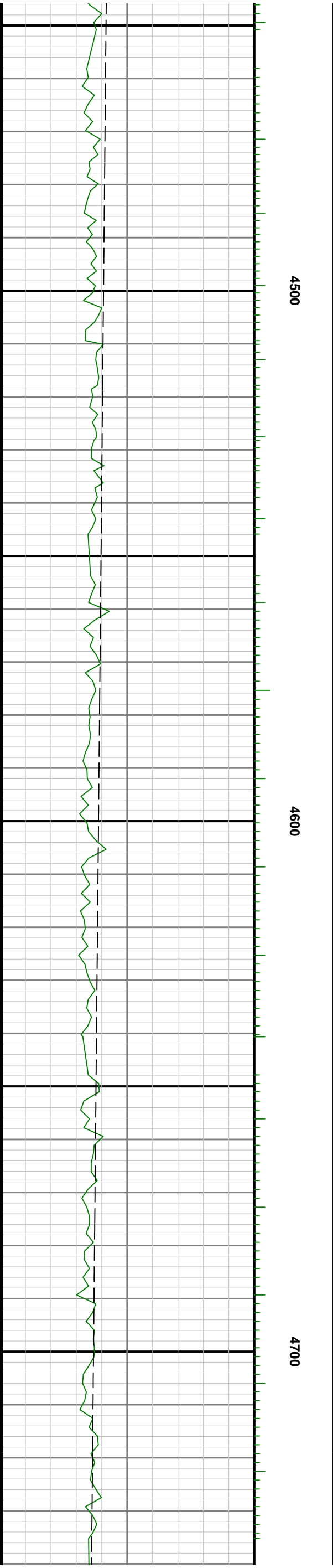
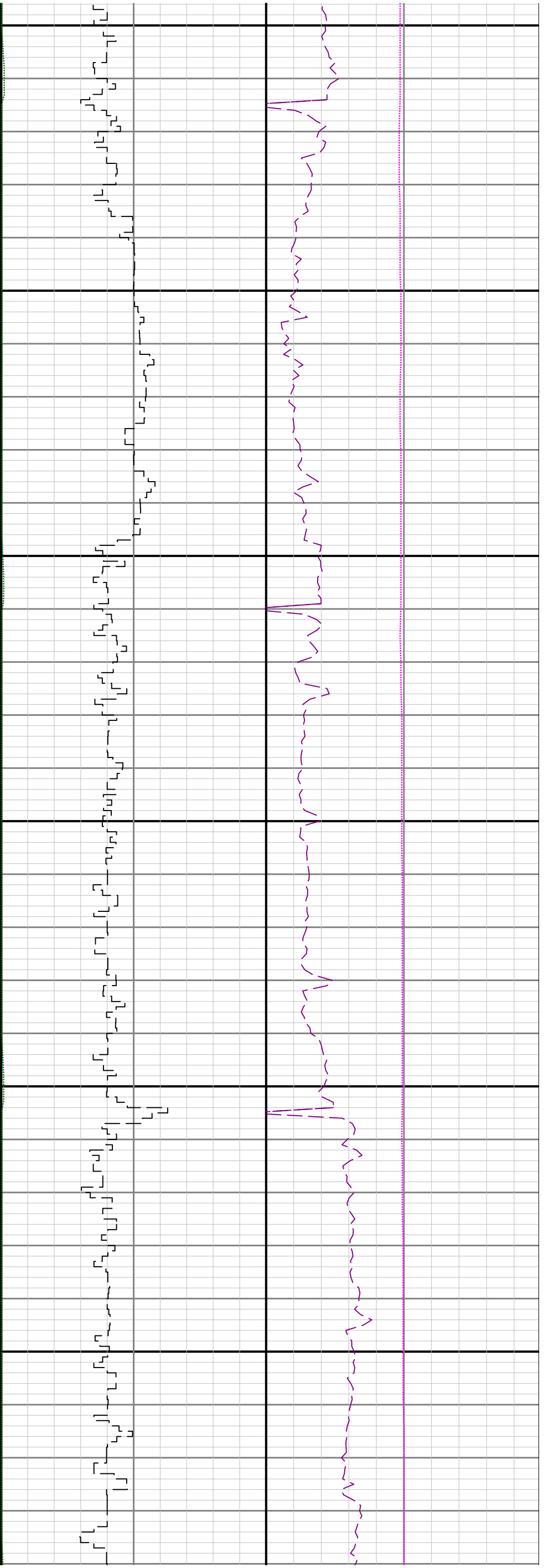


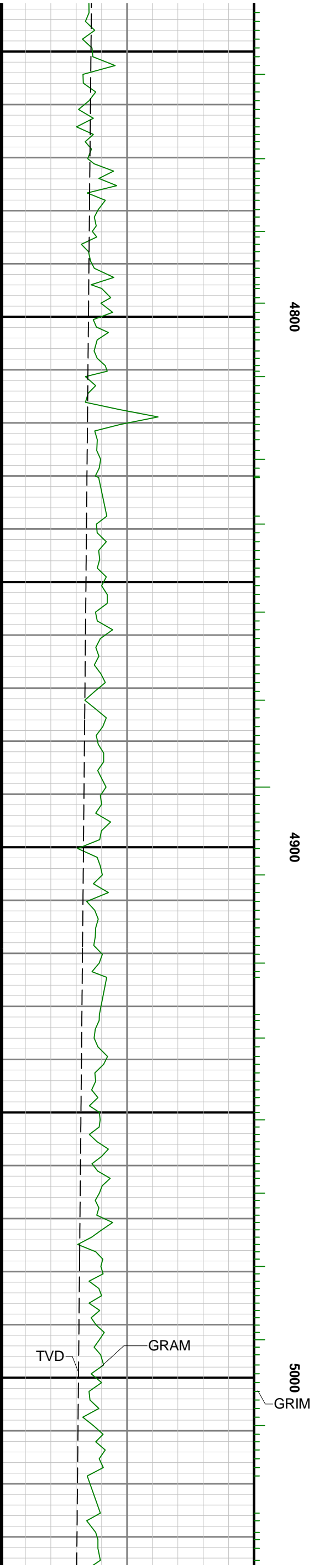
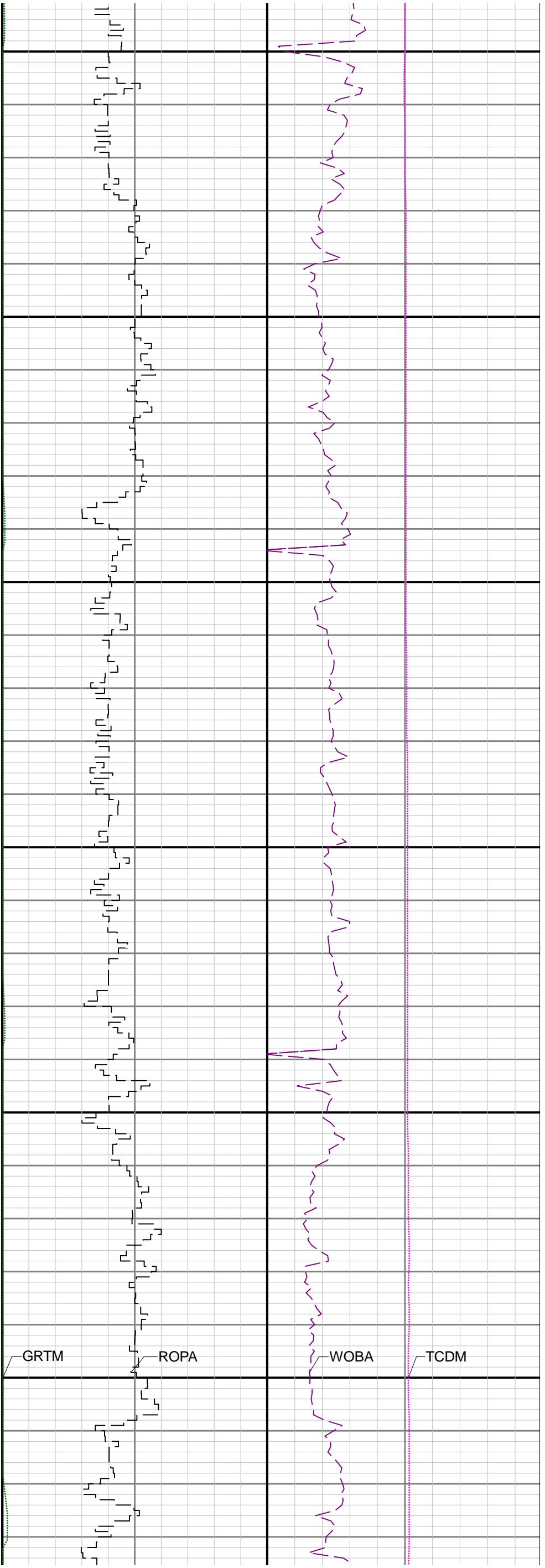


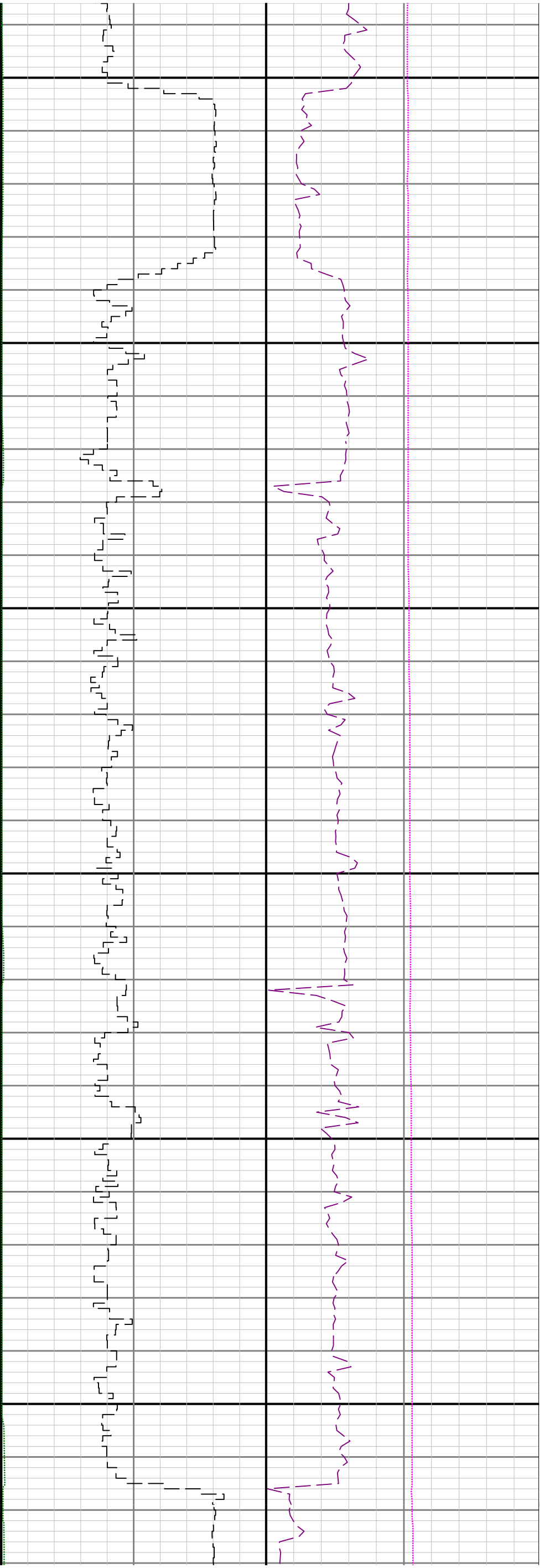








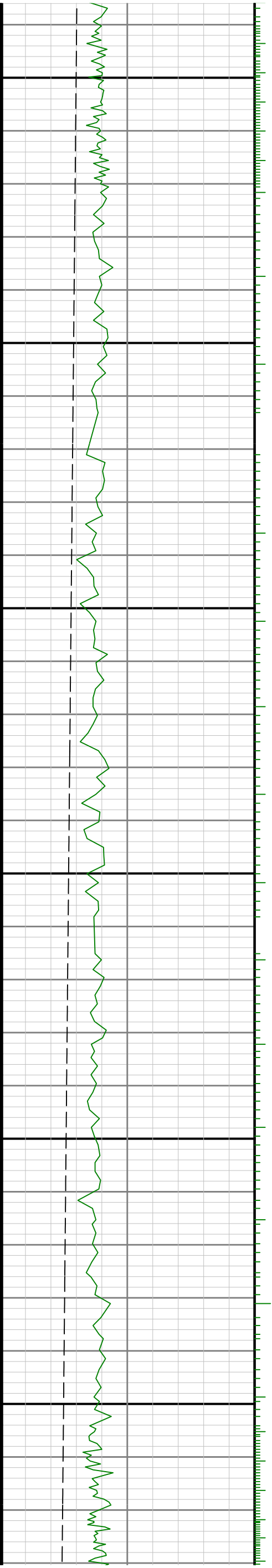


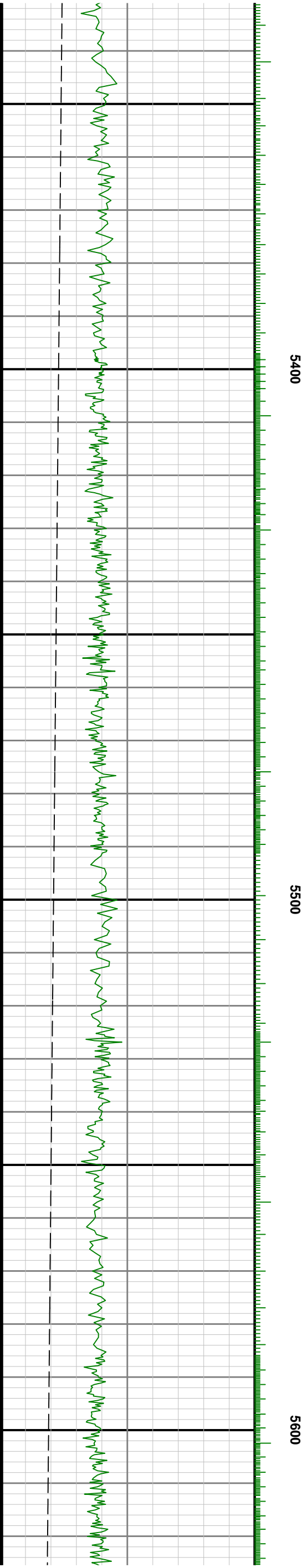


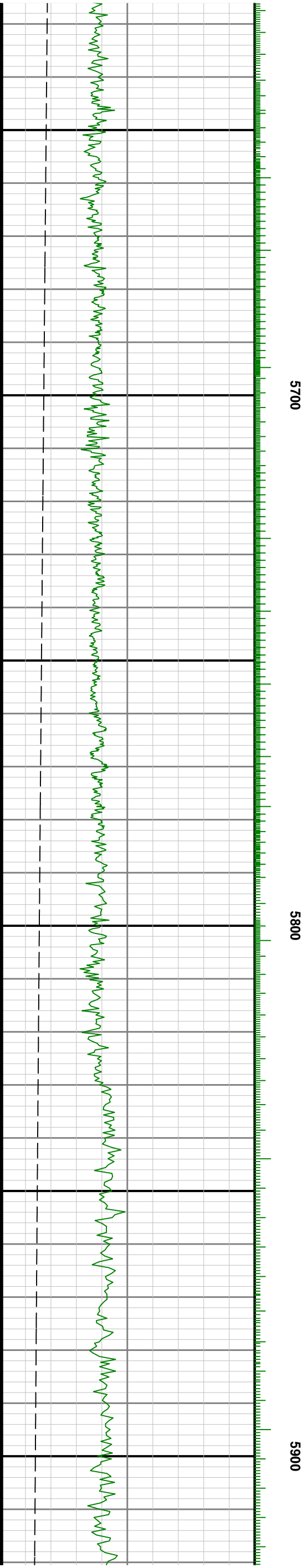
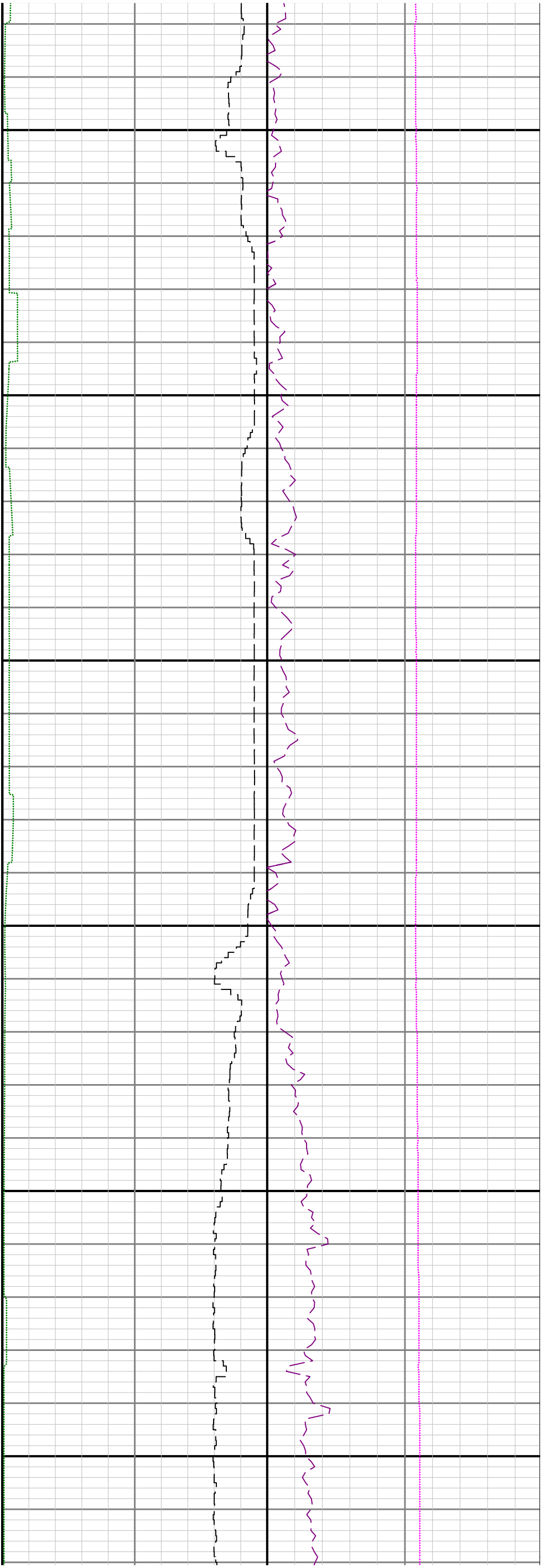
5100

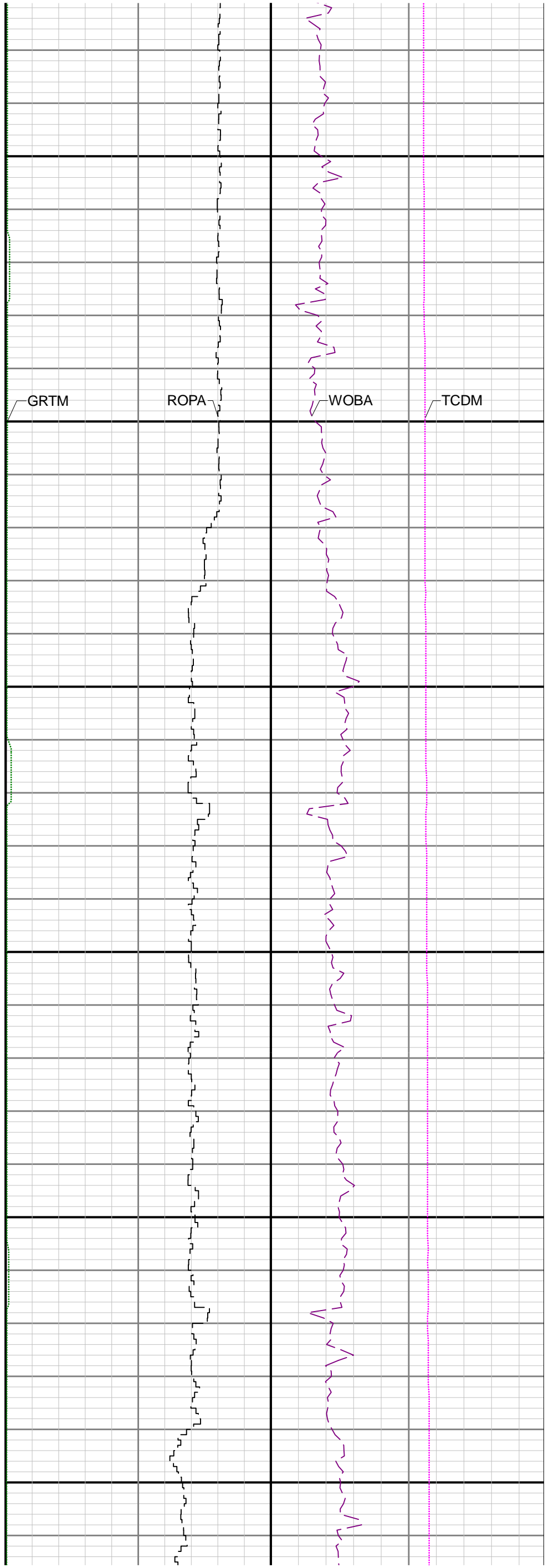
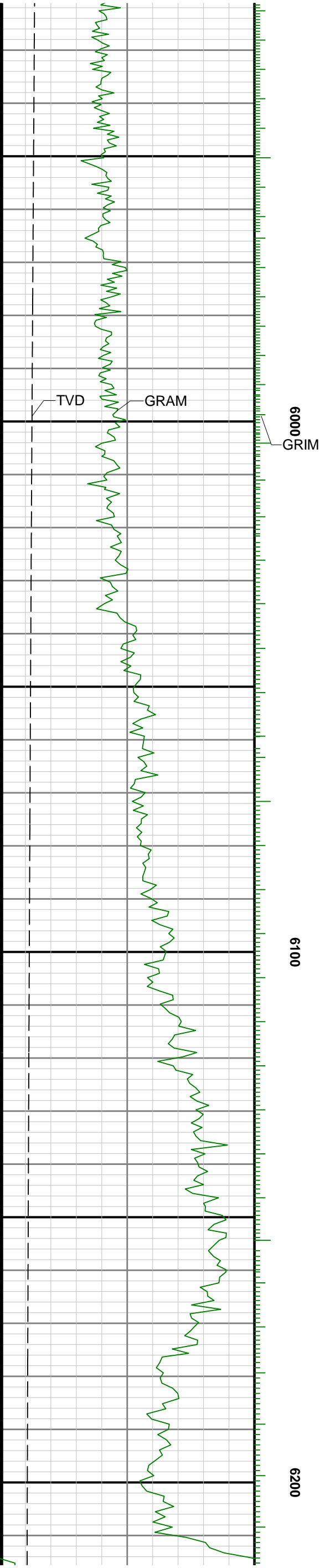
5200

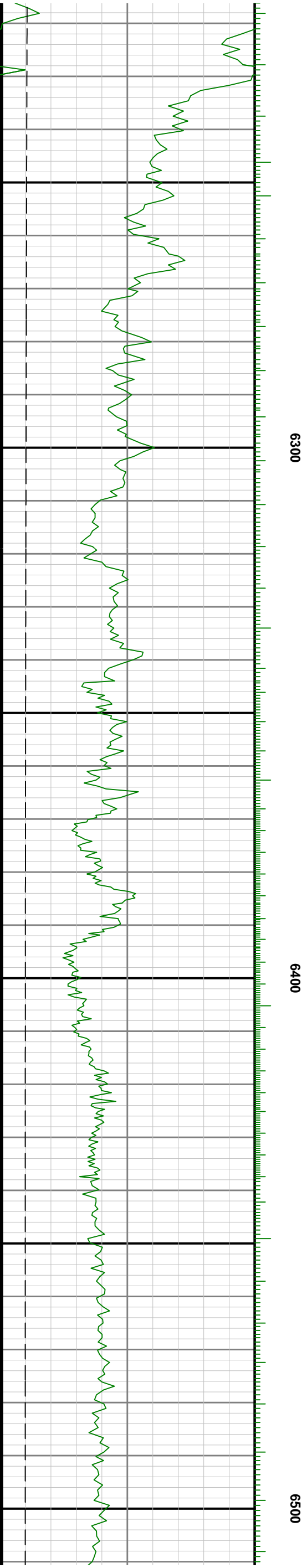
5300

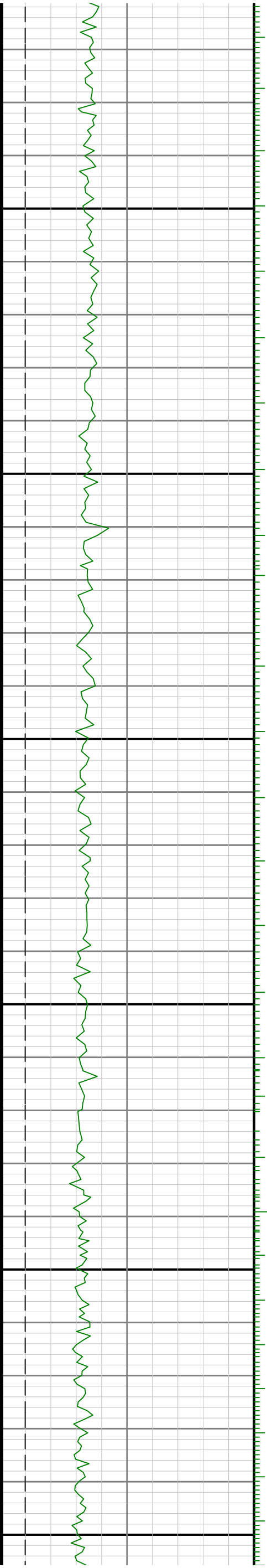








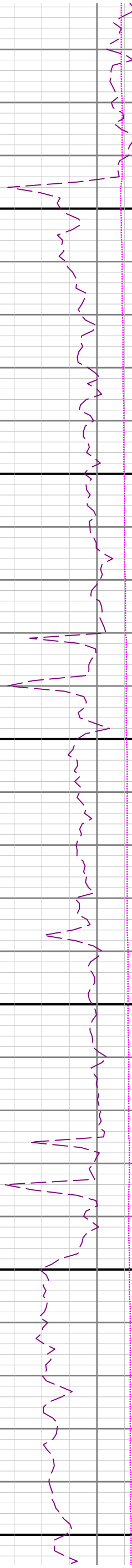
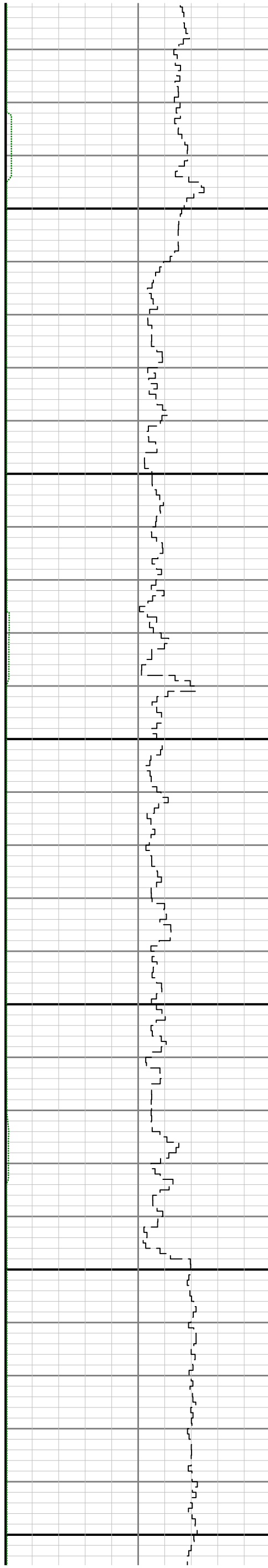


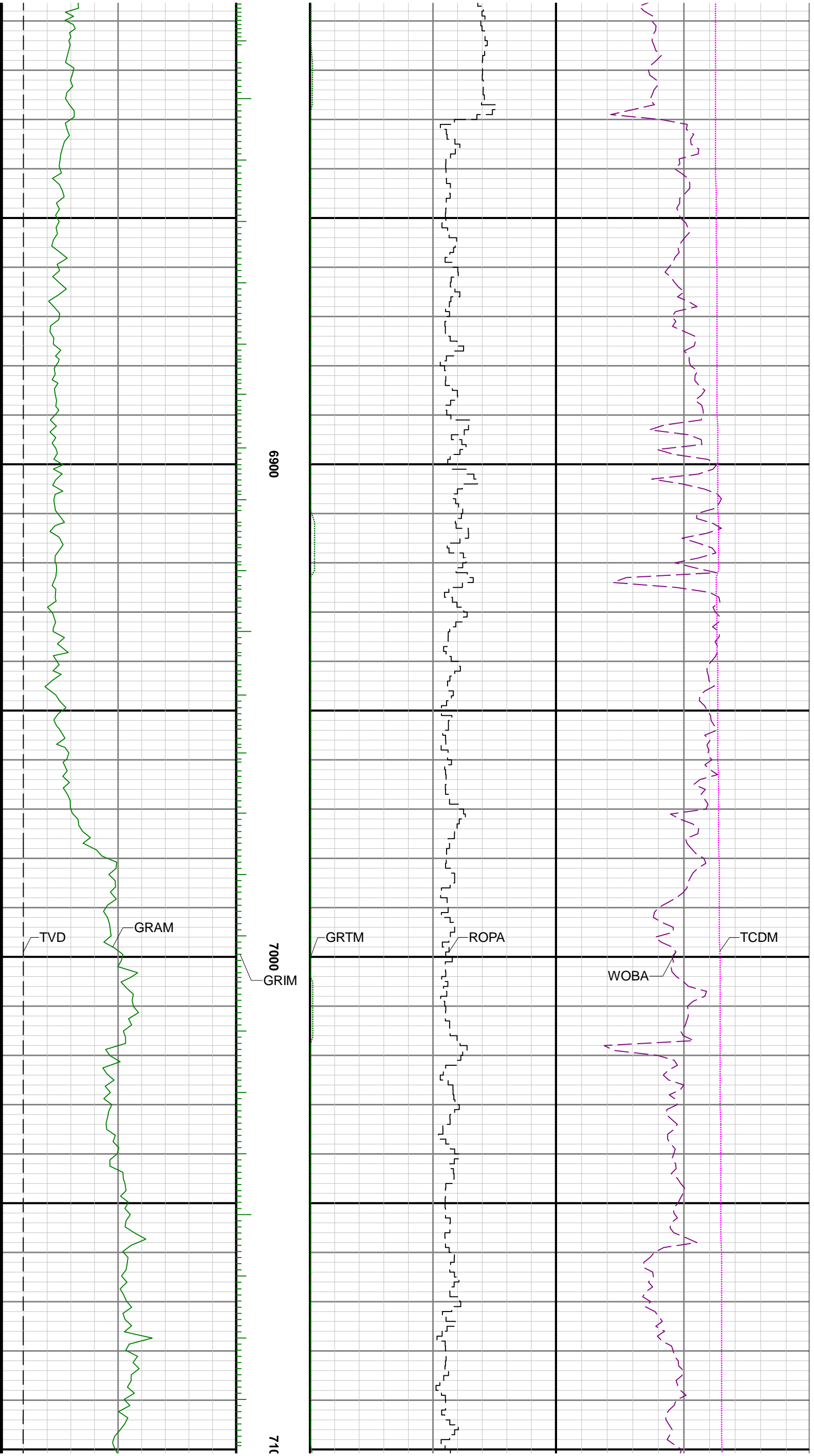


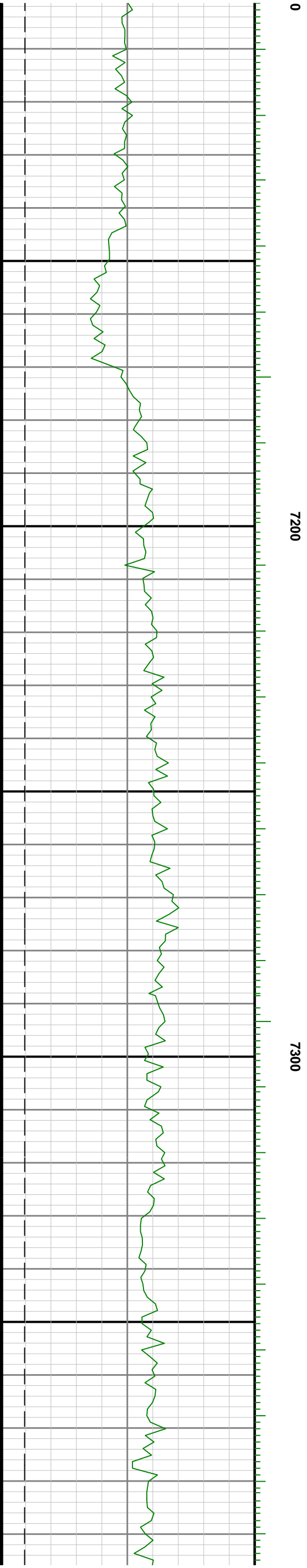
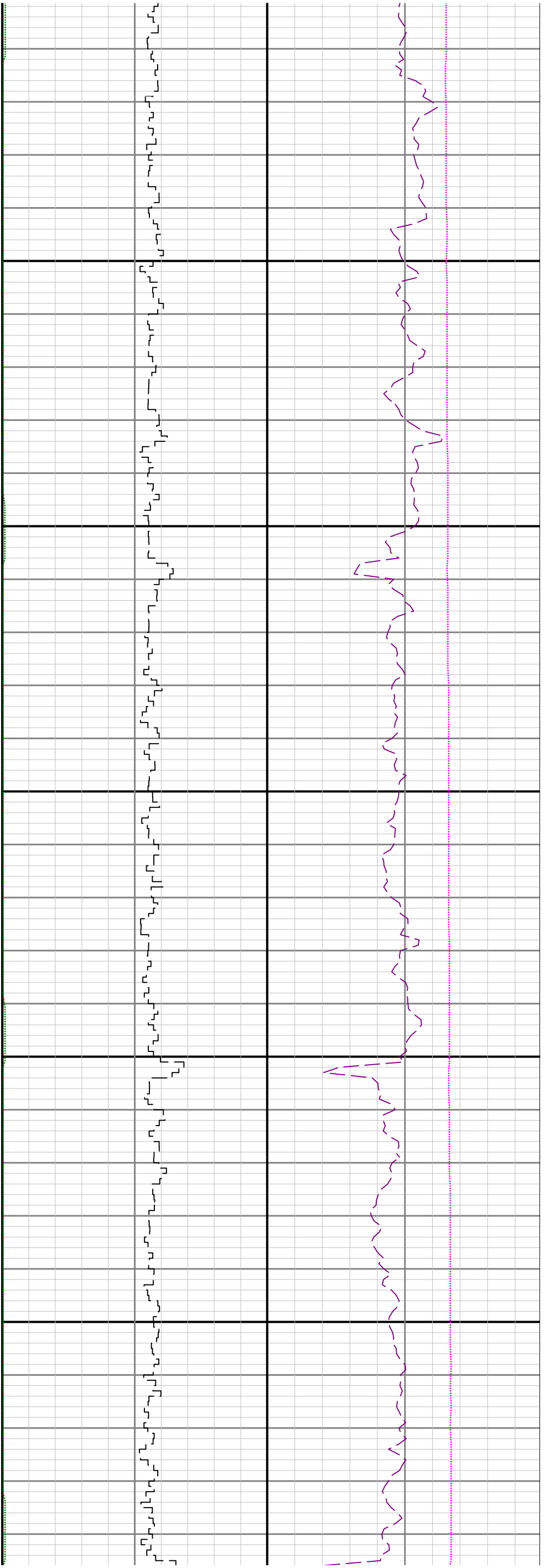
6800

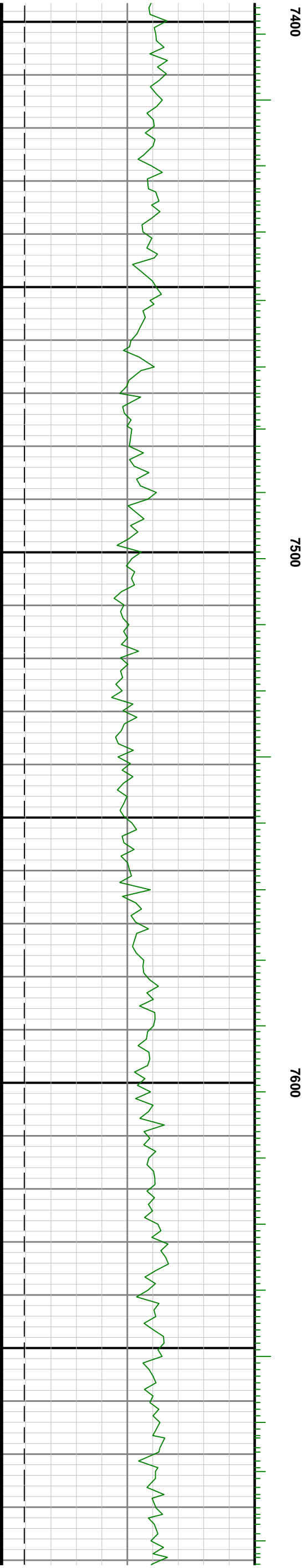
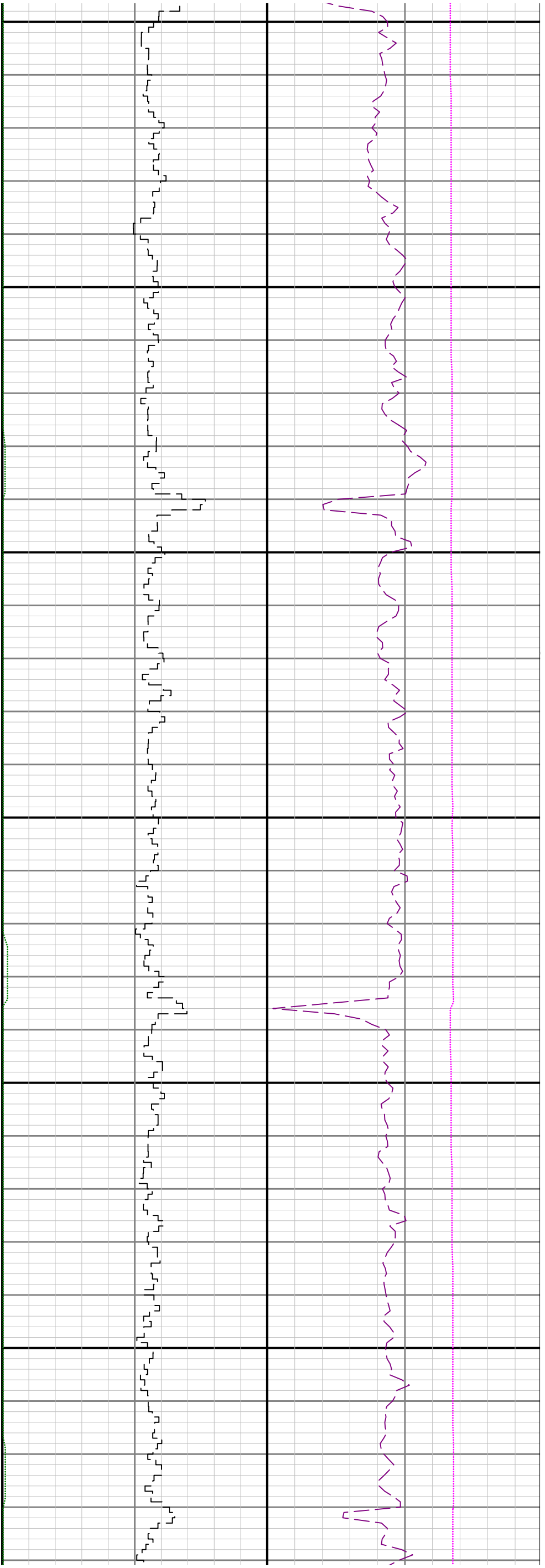
6700

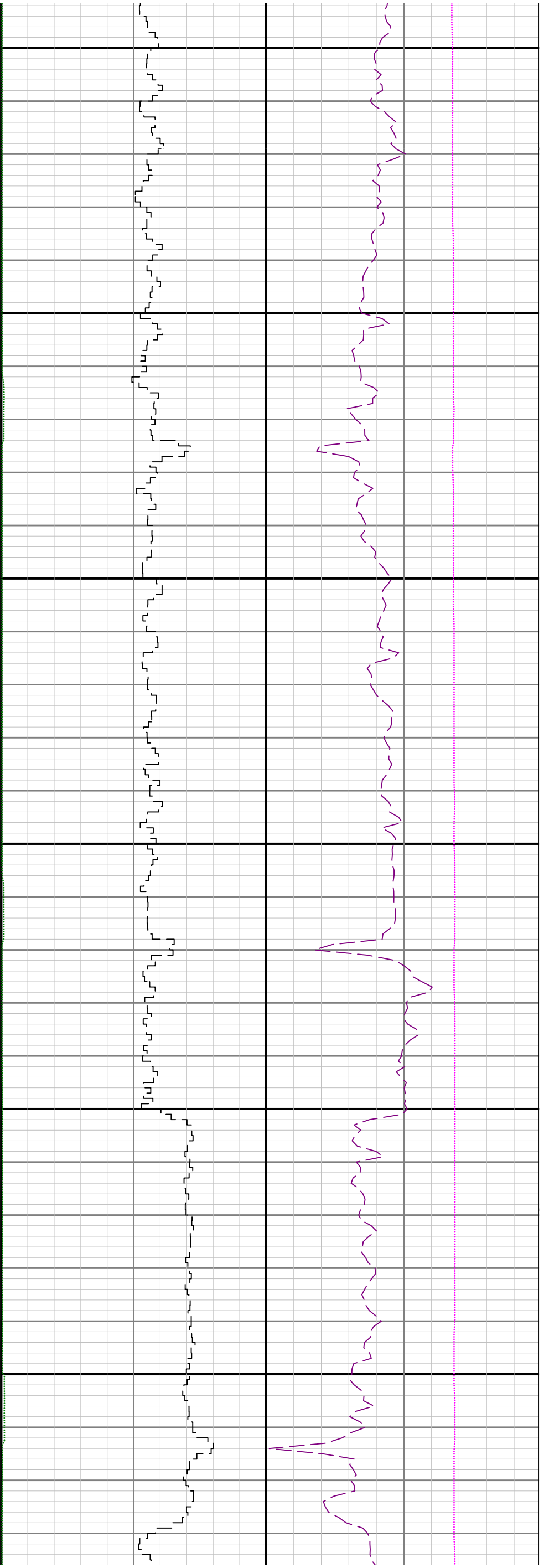
0099







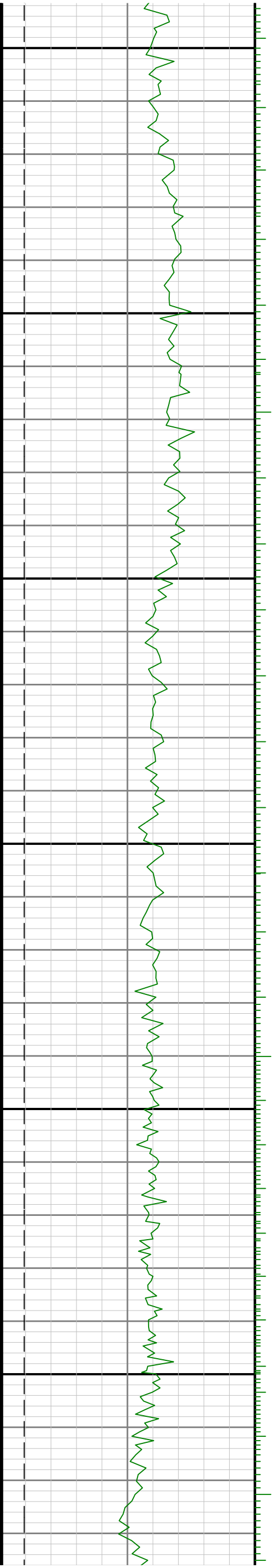


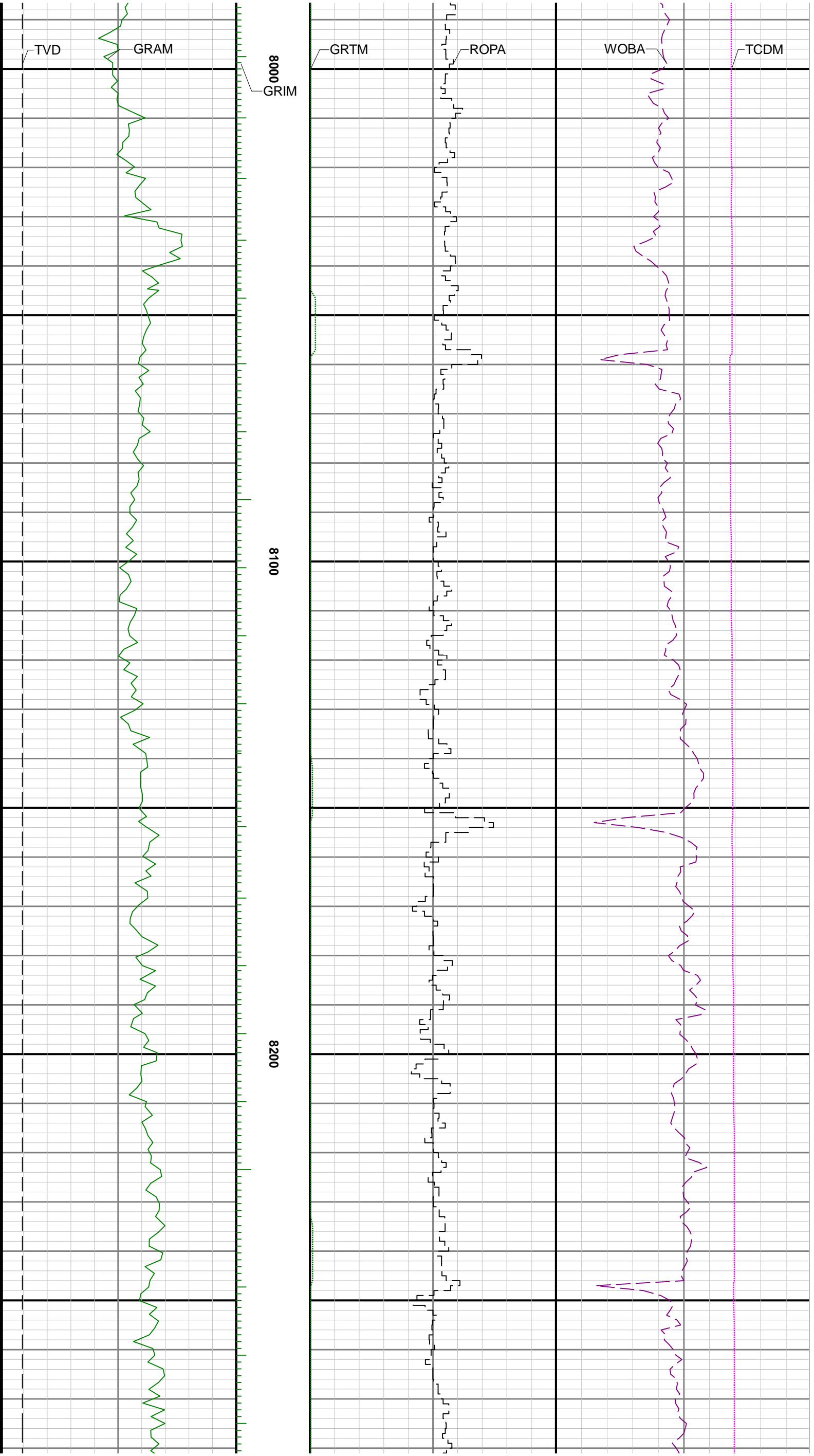


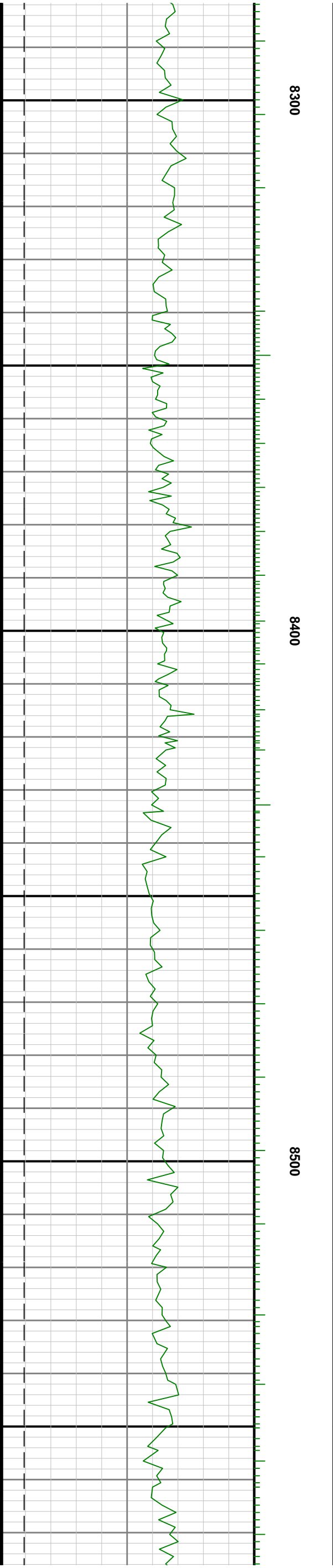
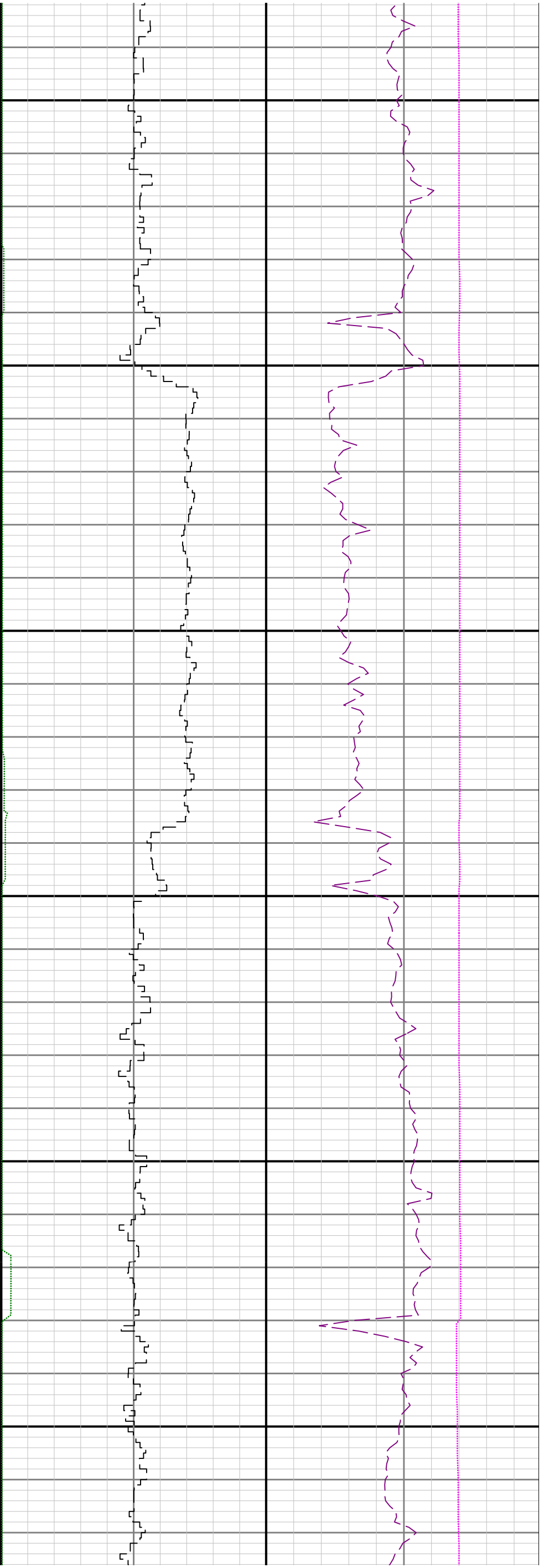
7700

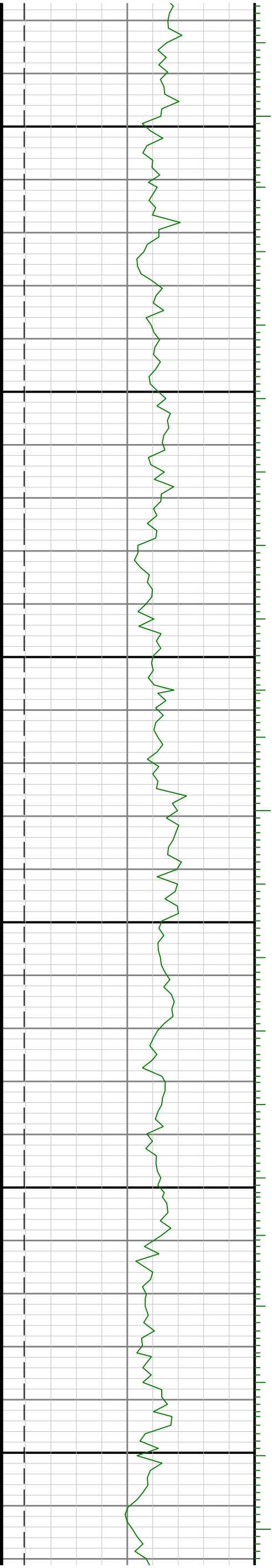
7800

7900









8800

8700

8600

