

SYNERGY RESOURCES CORPORATION

Location: COLORADO Slot: SLOT#18 GOETZEL 33C-30-M (2217'FSL & 2053'FWL, SEC.29)
Field: WELD COUNTY (NAD83,TRUE NORTH) Well: GOETZEL 33C-30-M
Facility: SEC.29-T06N-R66W Wellbore: GOETZEL 33C-30-M PWB

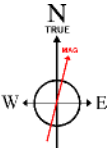
Plot reference wellpath is GOETZEL 33C-30-M REV-A.0 PWP	Grid System: NAD83 / Lambert Colorado SP, Northern Zone (501), US feet
True vertical depths are referenced to PERCISION 562 (25) (RKB)	* = Wellpath was transformed from a different geodetic datum
Measured depths are referenced to PERCISION 562 (25) (RKB)	North Reference: True north
PERCISION 562 (25) (RKB) to Mean Sea Level: 4757 feet	Scale: True distance
Mean Sea Level to Mud line (At Slot: SLOT#18 GOETZEL 33C-30-M (2217'FSL & 2053'FWL, SEC.29)): 0 feet	Depths are in feet
Coordinates are in feet referenced to Slot	Created by: wajugan on 2017-02-27
	Database: WA_DEN_Denver_Defn

Location Information

Facility Name	Grid East (US ft)	Grid North (US ft)	Latitude	Longitude
SEC.29-T06N-R66W	3194449.646	1411672.908	40°27'40.817"N	104°48'04.259"W
Slot	Local N (ft)	Local E (ft)	Grid East (US ft)	Grid North (US ft)
SLOT#18 GOETZEL 33C-30-M (2217'FSL & 2053'FWL, SEC.29)	-1282.38	822.02	3193637.790	1410383.241
PERCISION 562 (25) (RKB) to Mud line (At Slot: SLOT#18 GOETZEL 33C-30-M (2217'FSL & 2053'FWL, SEC.29))				4757ft
Mean Sea Level to Mud line (At Slot: SLOT#18 GOETZEL 33C-30-M (2217'FSL & 2053'FWL, SEC.29))				0ft
PERCISION 562 (25) (RKB) to Mean Sea Level				4757ft

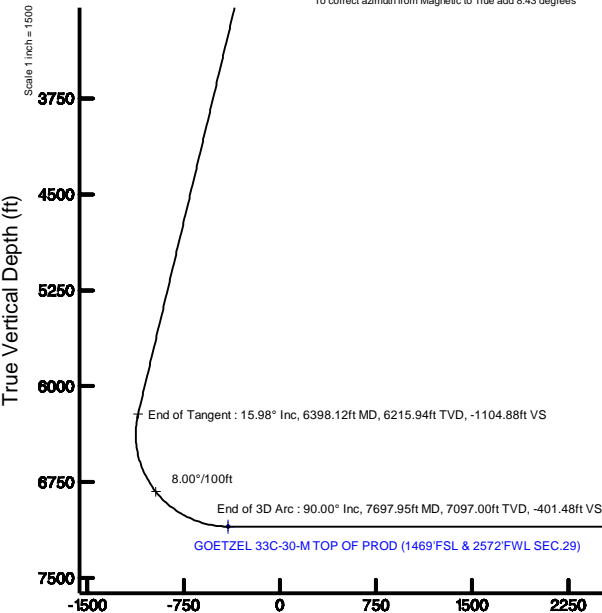
Tie-On Position

MD (ft)	Inc (°)	Az (°)	TVD (ft)	Local N (ft)	Local E (ft)	Grid East (US ft)	Grid North (US ft)	Latitude	Longitude
25.00	0.000	115.712	25.00	0.00	0.00	3193637.79	1410383.24	40°27'28.145"N	104°48'14.893"W



BGGM (1900.0 to 2018.0) Dip: 66.92° Field: 52499.6 nT
Magnetic North is 8.43 degrees East of True North (at 2/22/2017)

To correct azimuth from Magnetic to True add 8.43 degrees



Vertical Section (ft)
Azimuth 261.55° with reference 0.00 N, 0.00 E

Well Profile Data

Design Comment	MD (ft)	Inc (°)	Az (°)	TVD (ft)	Local N (ft)	Local E (ft)	DLS (°/100ft)	VS (ft)
Tie On	25.00	0.000	115.712	25.00	0.00	0.00	0.00	0.00
End of Tangent	1150.00	0.000	115.712	1150.00	0.00	0.00	0.00	0.00
End of Build	1948.86	15.977	115.712	1938.55	-48.01	99.71	2.00	-91.56
End of Tangent	6398.12	15.977	115.712	6215.94	-579.35	1203.12	0.00	-1104.88
End of 3D Arc	7697.95	90.000	267.120	7097.00	-734.84	515.10	8.00	-401.48
End of Tangent	15961.54	90.000	267.120	7097.00	-1150.04	-7738.05	0.00	7823.05

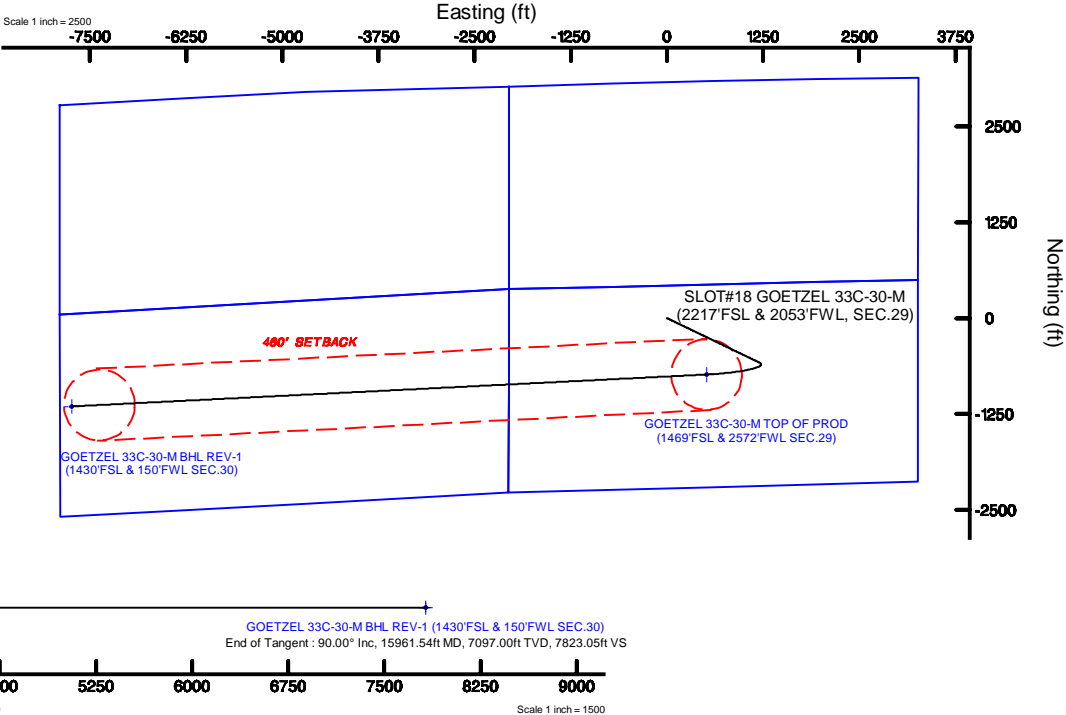
Survey Program

Start MD (ft)	End MD (ft)	Tool	Model	Log Name/Comment	Wellbore
25.00	1700.00	BHI NewTrak	Custom BHI NewTrak (Standard Rotating+Axial Cor) (Rockies 0.03Gt model)		GOETZEL 33C-30-M PWB
1700.00	15961.54	BHI AutoTrak Curve	Custom BHI AutoTrak Curve (IFR1, Short) (Rockies 0.03Gt model)		GOETZEL 33C-30-M PWB

Targets

Name	MD (ft)	TVD (ft)	Local N (ft)	Local E (ft)	Grid East (US ft)	Grid North (US ft)	Latitude	Longitude
SEC.29-T06N-R66W NORTHERN		9.00	1282.39	821.99	3194449.66	1411671.99	40°27'40.817"N	104°48'04.259"W
SEC.29-T06N-R66W SOUTHERN		9.00	1282.39	821.99	3194449.66	1411671.99	40°27'40.817"N	104°48'04.259"W
SEC.30-T06N-R66W NORTHERN		9.00	1282.39	821.99	3194449.66	1411671.99	40°27'40.817"N	104°48'04.259"W
SEC.30-T06N-R66W SOUTHERN		9.00	1282.39	821.99	3194449.66	1411671.99	40°27'40.817"N	104°48'04.259"W
GOETZEL 33C-30-M BHL ON PLAT (1430'FSL & 510'FWL SEC.30)		7097.00	-1130.48	-7377.93	3186269.24	1409194.94	40°27'16.963"N	104°49'50.333"W
GOETZEL 33C-30-M BHL REV 1 (1430'FSL & 150'FWL SEC.30)	15961.54	7097.00	-1150.04	-7738.05	3185909.30	1409172.56	40°27'16.769"N	104°49'54.991"W
GOETZEL 33C-30-M TOP OF PROD (1469'FSL & 2572'FWL SEC.29)	7697.95	7097.00	-734.84	515.10	3194158.62	1409652.49	40°27'20.884"N	104°48'08.230"W

Scale 1 inch = 2500



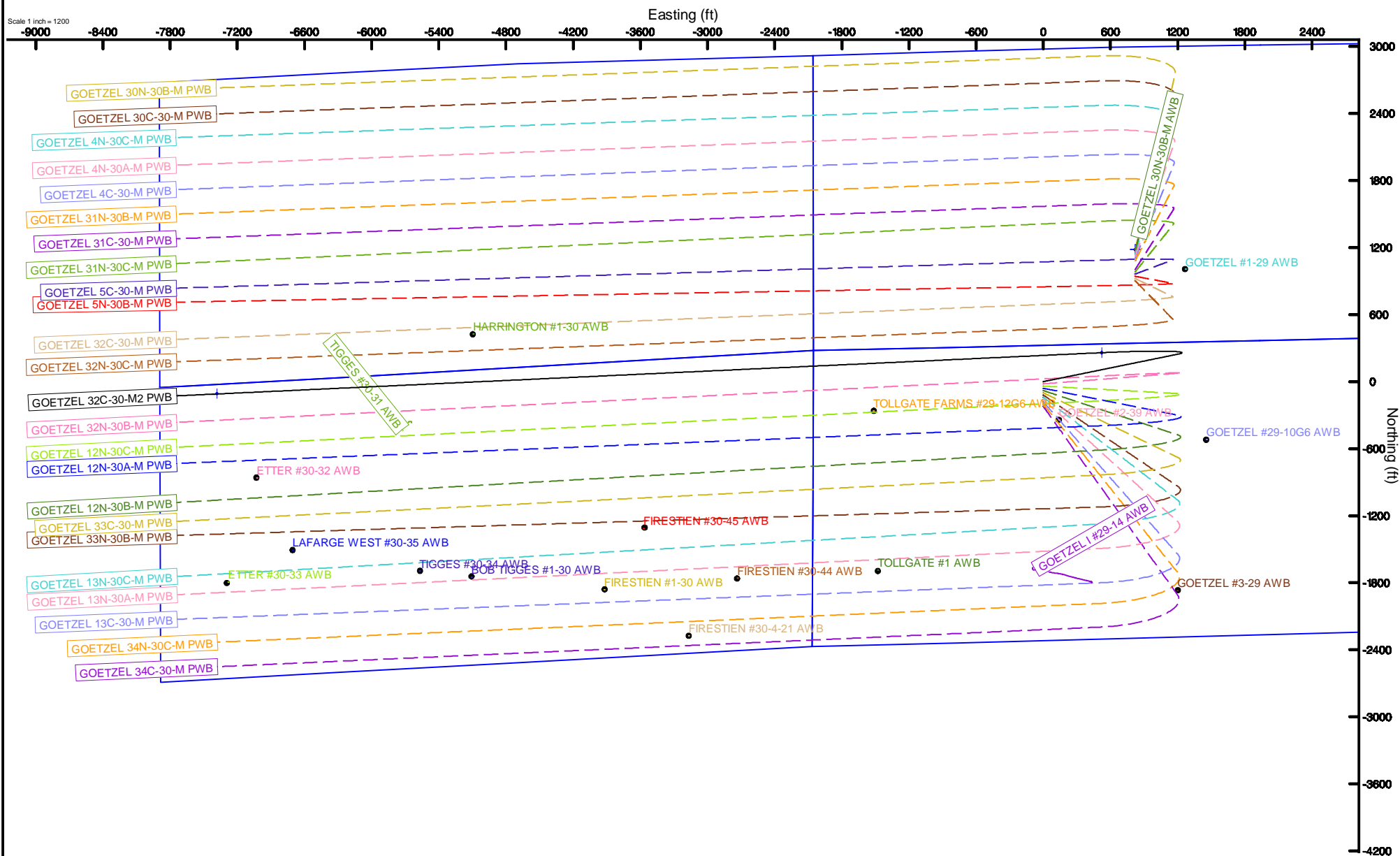
GOETZEL 33C-30-M BHL REV-1 (1430'FSL & 150'FWL SEC.30)
End of Tangent : 90.00° Inc, 15961.54ft MD, 7097.00ft TVD, 7823.05ft VS

Location:	COLORADO	Slot:	SLOT#13 GOETZEL 32C-30-M2 (2317'FSL & 2053'FWL SEC.29
Field:	WELD COUNTY (NAD83,TRUE NORTH)	Well:	GOETZEL 32C-30-M2
Facility:	SEC.29-T06N-R66W	Wellbore:	GOETZEL 32C-30-M2 PWB



BGGM (1900.0 to 2018.0) Dip: 66.92° Field: 52499.6 nT
Magnetic North is 8.43 degrees East of True North (at 2/22/2017)

To correct azimuth from Magnetic to True add 8.43 degrees



GOETZEL_33C-30-M_REV-A.0_PWP.las

~VERSION INFORMATION

VERS. 2.0 : CWLS LOG ASCII STANDARD-VERSION 2.0

WRAP. NO : ASCII DATA SECTION CONTAINS ONE ROW PER WELLPATH STATION

~WELL INFORMATION

#MNEM	.UNITS	DATA	:DESCRIPTION
#----	.-----	----	:-----
STRT	.ft	0.00	:START MD
STOP	.ft	15961.54	:STOP MD
STEP	.ft	0.0	:STEP (non-uniform increment)
NULL	.	-999.99	:NULL
COMP	.	SYNERGY RESOURCES CORPORATION	:OPERATOR
WELL	.	GOETZEL 33C-30-M	:WELL
FLD	.	WELD COUNTY (NAD83,TRUE NORTH)	:FIELD
LOC	.	COLORADO	:AREA (aka: Location)
CNTY	.	N/A	:COUNTY
STAT	.	N/A	:STATE
CTRY	.	N/A	:COUNTRY
SRVC	.	Baker Hughes	:CONTRACTOR
DATE	.	02/22/2017	:LOG REV DATE
API	.		:API NUMBER

~OTHER INFORMATION

#Software: WellArchitect(R) Version 5.0

#MNEM	.UNITS	DATA	:DESCRIPTION
#----	.-----	----	:-----
WPTYPE	.	PLANNED WELLPATH	:WELLPATH TYPE
FACILITY	.	SEC.29-T06N-R66W	:FACILITY
SLOT	.	SLOT#18 GOETZEL 33C-30-M (2217'FSL & 2053'FWL, SEC.29):SLOT	:SLOT
WELLBORE	.	GOETZEL 33C-30-M PWB	:WELLBORE
WELLPATH	.	GOETZEL 33C-30-M REV-A.0 PWP	:WELLPATH
MDREFPT	.	PERCISION 562 (25') (RKB)	:MD REFERENCE POINT
TVDREFPT	.	PERCISION 562 (25') (RKB)	:TVD REFERENCE POINT
LCLREFPT	.	Slot	:LOCAL COORDINATE REFERENCE PT
VSAZIMUTH.deg		261.55	:VERTICAL SECTION AZIMUTH
VSORIGN .ft		0.00	:VERTICAL SECTION ORIGIN NORTH
VSORIGE .ft		0.00	:VERTICAL SECTION ORIGIN EAST

~CURVE (WELLPATH) INFORMATION

#MNEM	.UNITS	:DESCRIPTION
#----	.-----	:-----
DEPT	.ft	:MEASURED DEPTH
INC	.deg	:INCLINATION
AZI	.deg	:AZIMUTH

GOETZEL_33C-30-M_REV-A.0_PWP.las

TVD .ft :TRUE VERTICAL DEPTH
 SECT .ft :CROSS SECTION (CURTAIN/VERTICAL)
 LOCALN .ft :LOCAL NORTH
 LOCALE .ft :LOCAL EAST
 LAT .deg :LATITUDE
 LONG .deg :LONGITUDE
 DLS .deg/100ft :DOGLEG SEVERITY

~ASCII DATA

0.00	0.00	115.71	0.00	0.00	0.00	0.00	40.4578181	-104.8041369	0.00
25.00	0.00	115.71	25.00	0.00	0.00	0.00	40.4578181	-104.8041369	0.00
125.00	0.00	115.71	125.00	0.00	0.00	0.00	40.4578181	-104.8041369	0.00
225.00	0.00	115.71	225.00	0.00	0.00	0.00	40.4578181	-104.8041369	0.00
325.00	0.00	115.71	325.00	0.00	0.00	0.00	40.4578181	-104.8041369	0.00
425.00	0.00	115.71	425.00	0.00	0.00	0.00	40.4578181	-104.8041369	0.00
525.00	0.00	115.71	525.00	0.00	0.00	0.00	40.4578181	-104.8041369	0.00
625.00	0.00	115.71	625.00	0.00	0.00	0.00	40.4578181	-104.8041369	0.00
725.00	0.00	115.71	725.00	0.00	0.00	0.00	40.4578181	-104.8041369	0.00
825.00	0.00	115.71	825.00	0.00	0.00	0.00	40.4578181	-104.8041369	0.00
925.00	0.00	115.71	925.00	0.00	0.00	0.00	40.4578181	-104.8041369	0.00
1025.00	0.00	115.71	1025.00	0.00	0.00	0.00	40.4578181	-104.8041369	0.00
1125.00	0.00	115.71	1125.00	0.00	0.00	0.00	40.4578181	-104.8041369	0.00
1150.00	0.00	115.71	1150.00	0.00	0.00	0.00	40.4578181	-104.8041369	0.00
1225.00	1.50	115.71	1224.99	-0.81	-0.43	0.88	40.4578169	-104.8041338	2.00
1325.00	3.50	115.71	1324.89	-4.42	-2.32	4.81	40.4578117	-104.8041196	2.00
1425.00	5.50	115.71	1424.58	-10.91	-5.72	11.88	40.4578023	-104.8040942	2.00
1525.00	7.50	115.71	1523.93	-20.28	-10.63	22.08	40.4577889	-104.8040576	2.00
1625.00	9.50	115.71	1622.83	-32.51	-17.05	35.40	40.4577713	-104.8040097	2.00
1725.00	11.50	115.71	1721.15	-47.59	-24.95	51.82	40.4577496	-104.8039507	2.00
1825.00	13.50	115.71	1818.77	-65.49	-34.34	71.32	40.4577238	-104.8038807	2.00
1925.00	15.50	115.71	1915.58	-86.21	-45.20	93.87	40.4576940	-104.8037996	2.00
1948.86	15.98	115.71	1938.55	-91.56	-48.01	99.71	40.4576863	-104.8037787	2.00
2025.00	15.98	115.71	2011.75	-108.91	-57.10	118.59	40.4576613	-104.8037108	0.00
2125.00	15.98	115.71	2107.88	-131.68	-69.05	143.39	40.4576285	-104.8036217	0.00
2225.00	15.98	115.71	2204.02	-154.46	-80.99	168.19	40.4575958	-104.8035326	0.00
2325.00	15.98	115.71	2300.16	-177.23	-92.93	192.99	40.4575630	-104.8034435	0.00
2425.00	15.98	115.71	2396.29	-200.01	-104.87	217.79	40.4575302	-104.8033543	0.00
2525.00	15.98	115.71	2492.43	-222.78	-116.81	242.59	40.4574974	-104.8032652	0.00
2625.00	15.98	115.71	2588.57	-245.56	-128.76	267.39	40.4574646	-104.8031761	0.00
2725.00	15.98	115.71	2684.71	-268.33	-140.70	292.19	40.4574318	-104.8030870	0.00
2825.00	15.98	115.71	2780.84	-291.11	-152.64	316.99	40.4573991	-104.8029979	0.00
2925.00	15.98	115.71	2876.98	-313.88	-164.58	341.79	40.4573663	-104.8029088	0.00
3025.00	15.98	115.71	2973.12	-336.66	-176.53	366.59	40.4573335	-104.8028196	0.00
3125.00	15.98	115.71	3069.25	-359.43	-188.47	391.39	40.4573007	-104.8027305	0.00

GOETZEL_33C-30-M_REV-A.0_PWP.las

3225.00	15.98	115.71	3165.39	-382.21	-200.41	416.19	40.4572679	-104.8026414	0.00
3325.00	15.98	115.71	3261.53	-404.98	-212.35	440.99	40.4572352	-104.8025523	0.00
3425.00	15.98	115.71	3357.67	-427.76	-224.29	465.79	40.4572024	-104.8024632	0.00
3525.00	15.98	115.71	3453.80	-450.53	-236.24	490.59	40.4571696	-104.8023741	0.00
3625.00	15.98	115.71	3549.94	-473.31	-248.18	515.39	40.4571368	-104.8022849	0.00
3725.00	15.98	115.71	3646.08	-496.08	-260.12	540.19	40.4571040	-104.8021958	0.00
3825.00	15.98	115.71	3742.21	-518.86	-272.06	564.99	40.4570713	-104.8021067	0.00
3925.00	15.98	115.71	3838.35	-541.63	-284.00	589.79	40.4570385	-104.8020176	0.00
4025.00	15.98	115.71	3934.49	-564.41	-295.95	614.59	40.4570057	-104.8019285	0.00
4125.00	15.98	115.71	4030.63	-587.18	-307.89	639.39	40.4569729	-104.8018394	0.00
4225.00	15.98	115.71	4126.76	-609.96	-319.83	664.19	40.4569401	-104.8017502	0.00
4325.00	15.98	115.71	4222.90	-632.73	-331.77	688.99	40.4569074	-104.8016611	0.00
4425.00	15.98	115.71	4319.04	-655.51	-343.71	713.79	40.4568746	-104.8015720	0.00
4525.00	15.98	115.71	4415.17	-678.28	-355.66	738.59	40.4568418	-104.8014829	0.00
4625.00	15.98	115.71	4511.31	-701.06	-367.60	763.39	40.4568090	-104.8013938	0.00
4725.00	15.98	115.71	4607.45	-723.83	-379.54	788.19	40.4567762	-104.8013047	0.00
4825.00	15.98	115.71	4703.58	-746.61	-391.48	812.99	40.4567434	-104.8012155	0.00
4925.00	15.98	115.71	4799.72	-769.38	-403.43	837.79	40.4567107	-104.8011264	0.00
5025.00	15.98	115.71	4895.86	-792.16	-415.37	862.59	40.4566779	-104.8010373	0.00
5125.00	15.98	115.71	4992.00	-814.93	-427.31	887.39	40.4566451	-104.8009482	0.00
5225.00	15.98	115.71	5088.13	-837.71	-439.25	912.19	40.4566123	-104.8008591	0.00
5325.00	15.98	115.71	5184.27	-860.48	-451.19	936.99	40.4565795	-104.8007700	0.00
5425.00	15.98	115.71	5280.41	-883.26	-463.14	961.79	40.4565468	-104.8006809	0.00
5525.00	15.98	115.71	5376.54	-906.03	-475.08	986.59	40.4565140	-104.8005917	0.00
5625.00	15.98	115.71	5472.68	-928.81	-487.02	1011.39	40.4564812	-104.8005026	0.00
5725.00	15.98	115.71	5568.82	-951.58	-498.96	1036.19	40.4564484	-104.8004135	0.00
5825.00	15.98	115.71	5664.96	-974.36	-510.90	1060.99	40.4564156	-104.8003244	0.00
5925.00	15.98	115.71	5761.09	-997.13	-522.85	1085.79	40.4563828	-104.8002353	0.00
6025.00	15.98	115.71	5857.23	-1019.91	-534.79	1110.59	40.4563501	-104.8001462	0.00
6125.00	15.98	115.71	5953.37	-1042.68	-546.73	1135.39	40.4563173	-104.8000571	0.00
6225.00	15.98	115.71	6049.50	-1065.46	-558.67	1160.19	40.4562845	-104.7999679	0.00
6325.00	15.98	115.71	6145.64	-1088.23	-570.61	1184.99	40.4562517	-104.7998788	0.00
6398.12	15.98	115.71	6215.94	-1104.88	-579.35	1203.12	40.4562277	-104.7998137	0.00
6425.00	14.15	120.06	6241.89	-1110.52	-582.60	1209.30	40.4562188	-104.7997915	8.00
6525.00	8.69	150.84	6339.96	-1122.77	-595.33	1223.58	40.4561839	-104.7997402	8.00
6625.00	8.84	205.32	6438.96	-1121.17	-608.90	1223.98	40.4561466	-104.7997387	8.00
6725.00	14.42	234.92	6536.95	-1105.74	-623.02	1210.48	40.4561079	-104.7997872	8.00
6825.00	21.56	246.83	6632.03	-1076.79	-637.43	1183.35	40.4560683	-104.7998847	8.00
6925.00	29.14	252.89	6722.35	-1034.88	-651.84	1143.13	40.4560288	-104.8000293	8.00
7025.00	36.88	256.60	6806.15	-980.82	-665.98	1090.58	40.4559899	-104.8002181	8.00
7125.00	44.71	259.16	6881.80	-915.68	-679.58	1026.73	40.4559527	-104.8004475	8.00
7225.00	52.58	261.10	6947.83	-840.71	-692.35	952.84	40.4559176	-104.8007131	8.00
7325.00	60.47	262.67	7002.95	-757.37	-704.07	870.33	40.4558854	-104.8010096	8.00
7425.00	68.38	264.01	7046.09	-667.29	-714.49	780.81	40.4558568	-104.8013312	8.00

GOETZEL_33C-30-M_REV-A.0_PWP.las

7525.00	76.30	265.21	7076.41	-572.22	-723.42	686.02	40.4558323	-104.8016718	8.00
7625.00	84.22	266.33	7093.32	-474.01	-730.68	587.81	40.4558124	-104.8020247	8.00
7697.95	90.00	267.12	7097.00	-401.48	-734.84	515.10	40.4558010	-104.8022860	8.00
7725.00	90.00	267.12	7097.00	-374.56	-736.20	488.09	40.4557973	-104.8023831	0.00
7825.00	90.00	267.12	7097.00	-275.03	-741.22	388.21	40.4557835	-104.8027420	0.00
7925.00	90.00	267.12	7097.00	-175.50	-746.25	288.34	40.4557697	-104.8031008	0.00
8025.00	90.00	267.12	7097.00	-75.98	-751.27	188.47	40.4557559	-104.8034597	0.00
8125.00	90.00	267.12	7097.00	23.55	-756.30	88.59	40.4557421	-104.8038186	0.00
8225.00	90.00	267.12	7097.00	123.08	-761.32	-11.28	40.4557283	-104.8041775	0.00
8325.00	90.00	267.12	7097.00	222.61	-766.35	-111.16	40.4557145	-104.8045364	0.00
8425.00	90.00	267.12	7097.00	322.13	-771.37	-211.03	40.4557007	-104.8048952	0.00
8525.00	90.00	267.12	7097.00	421.66	-776.39	-310.90	40.4556869	-104.8052541	0.00
8625.00	90.00	267.12	7097.00	521.19	-781.42	-410.78	40.4556731	-104.8056130	0.00
8725.00	90.00	267.12	7097.00	620.72	-786.44	-510.65	40.4556594	-104.8059719	0.00
8825.00	90.00	267.12	7097.00	720.24	-791.47	-610.52	40.4556456	-104.8063308	0.00
8925.00	90.00	267.12	7097.00	819.77	-796.49	-710.40	40.4556318	-104.8066896	0.00
9025.00	90.00	267.12	7097.00	919.30	-801.52	-810.27	40.4556180	-104.8070485	0.00
9125.00	90.00	267.12	7097.00	1018.82	-806.54	-910.15	40.4556042	-104.8074074	0.00
9225.00	90.00	267.12	7097.00	1118.35	-811.57	-1010.02	40.4555904	-104.8077663	0.00
9325.00	90.00	267.12	7097.00	1217.88	-816.59	-1109.89	40.4555765	-104.8081252	0.00
9425.00	90.00	267.12	7097.00	1317.41	-821.62	-1209.77	40.4555627	-104.8084840	0.00
9525.00	90.00	267.12	7097.00	1416.93	-826.64	-1309.64	40.4555489	-104.8088429	0.00
9625.00	90.00	267.12	7097.00	1516.46	-831.66	-1409.51	40.4555351	-104.8092018	0.00
9725.00	90.00	267.12	7097.00	1615.99	-836.69	-1509.39	40.4555213	-104.8095607	0.00
9825.00	90.00	267.12	7097.00	1715.52	-841.71	-1609.26	40.4555075	-104.8099196	0.00
9925.00	90.00	267.12	7097.00	1815.04	-846.74	-1709.13	40.4554937	-104.8102784	0.00
10025.00	90.00	267.12	7097.00	1914.57	-851.76	-1809.01	40.4554799	-104.8106373	0.00
10125.00	90.00	267.12	7097.00	2014.10	-856.79	-1908.88	40.4554661	-104.8109962	0.00
10225.00	90.00	267.12	7097.00	2113.62	-861.81	-2008.76	40.4554523	-104.8113551	0.00
10325.00	90.00	267.12	7097.00	2213.15	-866.84	-2108.63	40.4554385	-104.8117139	0.00
10425.00	90.00	267.12	7097.00	2312.68	-871.86	-2208.50	40.4554246	-104.8120728	0.00
10525.00	90.00	267.12	7097.00	2412.21	-876.88	-2308.38	40.4554108	-104.8124317	0.00
10625.00	90.00	267.12	7097.00	2511.73	-881.91	-2408.25	40.4553970	-104.8127906	0.00
10725.00	90.00	267.12	7097.00	2611.26	-886.93	-2508.12	40.4553832	-104.8131495	0.00
10825.00	90.00	267.12	7097.00	2710.79	-891.96	-2608.00	40.4553694	-104.8135083	0.00
10925.00	90.00	267.12	7097.00	2810.31	-896.98	-2707.87	40.4553555	-104.8138672	0.00
11025.00	90.00	267.12	7097.00	2909.84	-902.01	-2807.75	40.4553417	-104.8142261	0.00
11125.00	90.00	267.12	7097.00	3009.37	-907.03	-2907.62	40.4553279	-104.8145850	0.00
11225.00	90.00	267.12	7097.00	3108.90	-912.06	-3007.49	40.4553141	-104.8149438	0.00
11325.00	90.00	267.12	7097.00	3208.42	-917.08	-3107.37	40.4553002	-104.8153027	0.00
11425.00	90.00	267.12	7097.00	3307.95	-922.11	-3207.24	40.4552864	-104.8156616	0.00
11525.00	90.00	267.12	7097.00	3407.48	-927.13	-3307.11	40.4552726	-104.8160205	0.00
11625.00	90.00	267.12	7097.00	3507.01	-932.15	-3406.99	40.4552588	-104.8163793	0.00
11725.00	90.00	267.12	7097.00	3606.53	-937.18	-3506.86	40.4552449	-104.8167382	0.00

GOETZEL_33C-30-M_REV-A.0_PWP.las

11825.00	90.00	267.12	7097.00	3706.06	-942.20	-3606.73	40.4552311	-104.8170971	0.00
11925.00	90.00	267.12	7097.00	3805.59	-947.23	-3706.61	40.4552173	-104.8174560	0.00
12025.00	90.00	267.12	7097.00	3905.11	-952.25	-3806.48	40.4552034	-104.8178148	0.00
12125.00	90.00	267.12	7097.00	4004.64	-957.28	-3906.36	40.4551896	-104.8181737	0.00
12225.00	90.00	267.12	7097.00	4104.17	-962.30	-4006.23	40.4551758	-104.8185326	0.00
12325.00	90.00	267.12	7097.00	4203.70	-967.33	-4106.10	40.4551619	-104.8188915	0.00
12425.00	90.00	267.12	7097.00	4303.22	-972.35	-4205.98	40.4551481	-104.8192503	0.00
12525.00	90.00	267.12	7097.00	4402.75	-977.38	-4305.85	40.4551343	-104.8196092	0.00
12625.00	90.00	267.12	7097.00	4502.28	-982.40	-4405.72	40.4551204	-104.8199681	0.00
12725.00	90.00	267.12	7097.00	4601.81	-987.42	-4505.60	40.4551066	-104.8203270	0.00
12825.00	90.00	267.12	7097.00	4701.33	-992.45	-4605.47	40.4550927	-104.8206858	0.00
12925.00	90.00	267.12	7097.00	4800.86	-997.47	-4705.35	40.4550789	-104.8210447	0.00
13025.00	90.00	267.12	7097.00	4900.39	-1002.50	-4805.22	40.4550650	-104.8214036	0.00
13125.00	90.00	267.12	7097.00	4999.91	-1007.52	-4905.09	40.4550512	-104.8217625	0.00
13225.00	90.00	267.12	7097.00	5099.44	-1012.55	-5004.97	40.4550374	-104.8221213	0.00
13325.00	90.00	267.12	7097.00	5198.97	-1017.57	-5104.84	40.4550235	-104.8224802	0.00
13425.00	90.00	267.12	7097.00	5298.50	-1022.60	-5204.71	40.4550097	-104.8228391	0.00
13525.00	90.00	267.12	7097.00	5398.02	-1027.62	-5304.59	40.4549958	-104.8231980	0.00
13625.00	90.00	267.12	7097.00	5497.55	-1032.64	-5404.46	40.4549820	-104.8235568	0.00
13725.00	90.00	267.12	7097.00	5597.08	-1037.67	-5504.34	40.4549681	-104.8239157	0.00
13825.00	90.00	267.12	7097.00	5696.60	-1042.69	-5604.21	40.4549542	-104.8242746	0.00
13925.00	90.00	267.12	7097.00	5796.13	-1047.72	-5704.08	40.4549404	-104.8246334	0.00
14025.00	90.00	267.12	7097.00	5895.66	-1052.74	-5803.96	40.4549265	-104.8249923	0.00
14125.00	90.00	267.12	7097.00	5995.19	-1057.77	-5903.83	40.4549127	-104.8253512	0.00
14225.00	90.00	267.12	7097.00	6094.71	-1062.79	-6003.70	40.4548988	-104.8257101	0.00
14325.00	90.00	267.12	7097.00	6194.24	-1067.82	-6103.58	40.4548850	-104.8260689	0.00
14425.00	90.00	267.12	7097.00	6293.77	-1072.84	-6203.45	40.4548711	-104.8264278	0.00
14525.00	90.00	267.12	7097.00	6393.30	-1077.87	-6303.32	40.4548572	-104.8267867	0.00
14625.00	90.00	267.12	7097.00	6492.82	-1082.89	-6403.20	40.4548434	-104.8271456	0.00
14725.00	90.00	267.12	7097.00	6592.35	-1087.91	-6503.07	40.4548295	-104.8275044	0.00
14825.00	90.00	267.12	7097.00	6691.88	-1092.94	-6602.95	40.4548157	-104.8278633	0.00
14925.00	90.00	267.12	7097.00	6791.40	-1097.96	-6702.82	40.4548018	-104.8282222	0.00
15025.00	90.00	267.12	7097.00	6890.93	-1102.99	-6802.69	40.4547879	-104.8285810	0.00
15125.00	90.00	267.12	7097.00	6990.46	-1108.01	-6902.57	40.4547741	-104.8289399	0.00
15225.00	90.00	267.12	7097.00	7089.99	-1113.04	-7002.44	40.4547602	-104.8292988	0.00
15325.00	90.00	267.12	7097.00	7189.51	-1118.06	-7102.31	40.4547463	-104.8296576	0.00
15425.00	90.00	267.12	7097.00	7289.04	-1123.09	-7202.19	40.4547324	-104.8300165	0.00
15525.00	90.00	267.12	7097.00	7388.57	-1128.11	-7302.06	40.4547186	-104.8303754	0.00
15625.00	90.00	267.12	7097.00	7488.10	-1133.13	-7401.94	40.4547047	-104.8307343	0.00
15725.00	90.00	267.12	7097.00	7587.62	-1138.16	-7501.81	40.4546908	-104.8310931	0.00
15825.00	90.00	267.12	7097.00	7687.15	-1143.18	-7601.68	40.4546769	-104.8314520	0.00
15925.00	90.00	267.12	7097.00	7786.68	-1148.21	-7701.56	40.4546631	-104.8318109	0.00
15961.54	90.00	267.12	7097.00	7823.05	-1150.04	-7738.05	40.4546580	-104.8319420	0.00



Planned Wellpath Report

GOETZEL 33C-30-M REV-A.0 PWP

Page 1 of 8



REFERENCE WELLPATH IDENTIFICATION

Operator	SYNERGY RESOURCES CORPORATION	Slot	SLOT#18 GOETZEL 33C-30-M (2217'FSL & 2053'FWL, SEC.29)
Area	COLORADO	Well	GOETZEL 33C-30-M
Field	WELD COUNTY (NAD83,TRUE NORTH)	Wellbore	GOETZEL 33C-30-M PWB
Facility	SEC.29-T06N-R66W		

REPORT SETUP INFORMATION

Projection System	NAD83 / Lambert Colorado SP, Northern Zone (501), US feet	Software System	WellArchitect® 5.0
North Reference	True	User	Wagnjam
Scale	0.999963	Report Generated	2/27/2017 at 5:41:32 PM
Convergence at slot	0.45° East	Database/Source file	WA_DEN_Denver_Defn/GOETZEL_33C-30-M_REV-A.0_PWP.xml

WELLPATH LOCATION

	Local coordinates		Grid coordinates		Geographic coordinates	
	North[ft]	East[ft]	Easting[US ft]	Northing[US ft]	Latitude	Longitude
Slot Location	-1282.38	-822.02	3193637.79	1410383.24	40°27'28.145"N	104°48'14.893"W
Facility Reference Pt			3194449.65	1411672.01	40°27'40.817"N	104°48'04.259"W
Field Reference Pt			3171284.48	1426358.81	40°30'07.643"N	104°53'02.634"W

WELLPATH DATUM

Calculation method	Minimum curvature	PERCISION 562 (25') (RKB) to Facility Vertical Datum	4757.00ft
Horizontal Reference Pt	Slot	PERCISION 562 (25') (RKB) to Mean Sea Level	4757.00ft
Vertical Reference Pt	PERCISION 562 (25') (RKB)	PERCISION 562 (25') (RKB) to Mud Line at Slot (SLOT#18 GOETZEL 33C-30-M (2217'FSL & 2053'FWL, SEC.29))	4757.00ft
MD Reference Pt	PERCISION 562 (25') (RKB)	Section Origin	N 0.00, E 0.00 ft
Field Vertical Reference	Mean Sea Level	Section Azimuth	261.55°



Planned Wellpath Report

GOETZEL 33C-30-M REV-A.0 PWP

Page 2 of 8



REFERENCE WELLPATH IDENTIFICATION

Operator	SYNERGY RESOURCES CORPORATION	Slot	SLOT#18 GOETZEL 33C-30-M (2217'FSL & 2053'FWL, SEC.29)
Area	COLORADO	Well	GOETZEL 33C-30-M
Field	WELD COUNTY (NAD83,TRUE NORTH)	Wellbore	GOETZEL 33C-30-M PWB
Facility	SEC.29-T06N-R66W		

WELLPATH DATA (166 stations) † = interpolated/extrapolated station

MD [ft]	Inclination [°]	Azimuth [°]	TVD [ft]	Vert Sect [ft]	North [ft]	East [ft]	DLS [°/100ft]	Comments
0.00†	0.000	115.712	0.00	0.00	0.00	0.00	0.00	
25.00	0.000	115.712	25.00	0.00	0.00	0.00	0.00	Tie On
125.00†	0.000	115.712	125.00	0.00	0.00	0.00	0.00	
225.00†	0.000	115.712	225.00	0.00	0.00	0.00	0.00	
325.00†	0.000	115.712	325.00	0.00	0.00	0.00	0.00	
425.00†	0.000	115.712	425.00	0.00	0.00	0.00	0.00	
525.00†	0.000	115.712	525.00	0.00	0.00	0.00	0.00	
625.00†	0.000	115.712	625.00	0.00	0.00	0.00	0.00	
725.00†	0.000	115.712	725.00	0.00	0.00	0.00	0.00	
825.00†	0.000	115.712	825.00	0.00	0.00	0.00	0.00	
925.00†	0.000	115.712	925.00	0.00	0.00	0.00	0.00	
1025.00†	0.000	115.712	1025.00	0.00	0.00	0.00	0.00	
1125.00†	0.000	115.712	1125.00	0.00	0.00	0.00	0.00	
1150.00	0.000	115.712	1150.00	0.00	0.00	0.00	0.00	End of Tangent
1225.00†	1.500	115.712	1224.99	-0.81	-0.43	0.88	2.00	
1325.00†	3.500	115.712	1324.89	-4.42	-2.32	4.81	2.00	
1425.00†	5.500	115.712	1424.58	-10.91	-5.72	11.88	2.00	
1525.00†	7.500	115.712	1523.93	-20.28	-10.63	22.08	2.00	
1625.00†	9.500	115.712	1622.83	-32.51	-17.05	35.40	2.00	
1725.00†	11.500	115.712	1721.15	-47.59	-24.95	51.82	2.00	
1825.00†	13.500	115.712	1818.77	-65.49	-34.34	71.32	2.00	
1925.00†	15.500	115.712	1915.58	-86.21	-45.20	93.87	2.00	
1948.86	15.977	115.712	1938.55	-91.56	-48.01	99.71	2.00	End of Build
2025.00†	15.977	115.712	2011.75	-108.91	-57.10	118.59	0.00	
2125.00†	15.977	115.712	2107.88	-131.68	-69.05	143.39	0.00	
2225.00†	15.977	115.712	2204.02	-154.46	-80.99	168.19	0.00	
2325.00†	15.977	115.712	2300.16	-177.23	-92.93	192.99	0.00	
2425.00†	15.977	115.712	2396.29	-200.01	-104.87	217.79	0.00	
2525.00†	15.977	115.712	2492.43	-222.78	-116.81	242.59	0.00	
2625.00†	15.977	115.712	2588.57	-245.56	-128.76	267.39	0.00	



Planned Wellpath Report

GOETZEL 33C-30-M REV-A.0 PWP

Page 3 of 8



REFERENCE WELLPATH IDENTIFICATION

Operator	SYNERGY RESOURCES CORPORATION	Slot	SLOT#18 GOETZEL 33C-30-M (2217'FSL & 2053'FWL, SEC.29)
Area	COLORADO	Well	GOETZEL 33C-30-M
Field	WELD COUNTY (NAD83,TRUE NORTH)	Wellbore	GOETZEL 33C-30-M PWB
Facility	SEC.29-T06N-R66W		

WELLPATH DATA (166 stations) † = interpolated/extrapolated station

MD [ft]	Inclination [°]	Azimuth [°]	TVD [ft]	Vert Sect [ft]	North [ft]	East [ft]	DLS [°/100ft]	Comments
2725.00†	15.977	115.712	2684.71	-268.33	-140.70	292.19	0.00	
2825.00†	15.977	115.712	2780.84	-291.11	-152.64	316.99	0.00	
2925.00†	15.977	115.712	2876.98	-313.88	-164.58	341.79	0.00	
3025.00†	15.977	115.712	2973.12	-336.66	-176.53	366.59	0.00	
3125.00†	15.977	115.712	3069.25	-359.43	-188.47	391.39	0.00	
3225.00†	15.977	115.712	3165.39	-382.21	-200.41	416.19	0.00	
3325.00†	15.977	115.712	3261.53	-404.98	-212.35	440.99	0.00	
3425.00†	15.977	115.712	3357.67	-427.76	-224.29	465.79	0.00	
3525.00†	15.977	115.712	3453.80	-450.53	-236.24	490.59	0.00	
3625.00†	15.977	115.712	3549.94	-473.31	-248.18	515.39	0.00	
3725.00†	15.977	115.712	3646.08	-496.08	-260.12	540.19	0.00	
3825.00†	15.977	115.712	3742.21	-518.86	-272.06	564.99	0.00	
3925.00†	15.977	115.712	3838.35	-541.63	-284.00	589.79	0.00	
4025.00†	15.977	115.712	3934.49	-564.41	-295.95	614.59	0.00	
4125.00†	15.977	115.712	4030.63	-587.18	-307.89	639.39	0.00	
4225.00†	15.977	115.712	4126.76	-609.96	-319.83	664.19	0.00	
4325.00†	15.977	115.712	4222.90	-632.73	-331.77	688.99	0.00	
4425.00†	15.977	115.712	4319.04	-655.51	-343.71	713.79	0.00	
4525.00†	15.977	115.712	4415.17	-678.28	-355.66	738.59	0.00	
4625.00†	15.977	115.712	4511.31	-701.06	-367.60	763.39	0.00	
4725.00†	15.977	115.712	4607.45	-723.83	-379.54	788.19	0.00	
4825.00†	15.977	115.712	4703.58	-746.61	-391.48	812.99	0.00	
4925.00†	15.977	115.712	4799.72	-769.38	-403.43	837.79	0.00	
5025.00†	15.977	115.712	4895.86	-792.16	-415.37	862.59	0.00	
5125.00†	15.977	115.712	4992.00	-814.93	-427.31	887.39	0.00	
5225.00†	15.977	115.712	5088.13	-837.71	-439.25	912.19	0.00	
5325.00†	15.977	115.712	5184.27	-860.48	-451.19	936.99	0.00	
5425.00†	15.977	115.712	5280.41	-883.26	-463.14	961.79	0.00	
5525.00†	15.977	115.712	5376.54	-906.03	-475.08	986.59	0.00	
5625.00†	15.977	115.712	5472.68	-928.81	-487.02	1011.39	0.00	



Planned Wellpath Report

GOETZEL 33C-30-M REV-A.0 PWP

Page 4 of 8



REFERENCE WELLPATH IDENTIFICATION

Operator	SYNERGY RESOURCES CORPORATION	Slot	SLOT#18 GOETZEL 33C-30-M (2217'FSL & 2053'FWL, SEC.29)
Area	COLORADO	Well	GOETZEL 33C-30-M
Field	WELD COUNTY (NAD83,TRUE NORTH)	Wellbore	GOETZEL 33C-30-M PWB
Facility	SEC.29-T06N-R66W		

WELLPATH DATA (166 stations) † = interpolated/extrapolated station

MD [ft]	Inclination [°]	Azimuth [°]	TVD [ft]	Vert Sect [ft]	North [ft]	East [ft]	DLS [°/100ft]	Comments
5725.00†	15.977	115.712	5568.82	-951.58	-498.96	1036.19	0.00	
5825.00†	15.977	115.712	5664.96	-974.36	-510.90	1060.99	0.00	
5925.00†	15.977	115.712	5761.09	-997.13	-522.85	1085.79	0.00	
6025.00†	15.977	115.712	5857.23	-1019.91	-534.79	1110.59	0.00	
6125.00†	15.977	115.712	5953.37	-1042.68	-546.73	1135.39	0.00	
6225.00†	15.977	115.712	6049.50	-1065.46	-558.67	1160.19	0.00	
6325.00†	15.977	115.712	6145.64	-1088.23	-570.61	1184.99	0.00	
6398.12	15.977	115.712	6215.94	-1104.88	-579.35	1203.12	0.00	End of Tangent
6425.00†	14.146	120.055	6241.89	-1110.52	-582.60	1209.30	8.00	
6525.00†	8.689	150.835	6339.96	-1122.77	-595.33	1223.58	8.00	
6625.00†	8.838	205.324	6438.96	-1121.17	-608.90	1223.98	8.00	
6725.00†	14.419	234.917	6536.95	-1105.74	-623.02	1210.48	8.00	
6825.00†	21.562	246.831	6632.03	-1076.79	-637.43	1183.35	8.00	
6925.00†	29.139	252.892	6722.35	-1034.88	-651.84	1143.13	8.00	
7025.00†	36.884	256.598	6806.15	-980.82	-665.98	1090.58	8.00	
7125.00†	44.708	259.163	6881.80	-915.68	-679.58	1026.73	8.00	
7225.00†	52.575	261.101	6947.83	-840.71	-692.35	952.84	8.00	
7325.00†	60.468	262.668	7002.95	-757.37	-704.07	870.33	8.00	
7425.00†	68.376	264.006	7046.09	-667.29	-714.49	780.81	8.00	
7525.00†	76.295	265.205	7076.41	-572.22	-723.42	686.02	8.00	
7625.00†	84.218	266.325	7093.32	-474.01	-730.68	587.81	8.00	
7697.95	90.000	267.120	7097.00 [†]	-401.48	-734.84	515.10	8.00	End of 3D Arc
7725.00†	90.000	267.120	7097.00	-374.56	-736.20	488.09	0.00	
7825.00†	90.000	267.120	7097.00	-275.03	-741.22	388.21	0.00	
7925.00†	90.000	267.120	7097.00	-175.50	-746.25	288.34	0.00	
8025.00†	90.000	267.120	7097.00	-75.98	-751.27	188.47	0.00	
8125.00†	90.000	267.120	7097.00	23.55	-756.30	88.59	0.00	
8225.00†	90.000	267.120	7097.00	123.08	-761.32	-11.28	0.00	
8325.00†	90.000	267.120	7097.00	222.61	-766.35	-111.16	0.00	
8425.00†	90.000	267.120	7097.00	322.13	-771.37	-211.03	0.00	



Planned Wellpath Report

GOETZEL 33C-30-M REV-A.0 PWP

Page 5 of 8



REFERENCE WELLPATH IDENTIFICATION

Operator	SYNERGY RESOURCES CORPORATION	Slot	SLOT#18 GOETZEL 33C-30-M (2217'FSL & 2053'FWL, SEC.29)
Area	COLORADO	Well	GOETZEL 33C-30-M
Field	WELD COUNTY (NAD83,TRUE NORTH)	Wellbore	GOETZEL 33C-30-M PWB
Facility	SEC.29-T06N-R66W		

WELLPATH DATA (166 stations) † = interpolated/extrapolated station

MD [ft]	Inclination [°]	Azimuth [°]	TVD [ft]	Vert Sect [ft]	North [ft]	East [ft]	DLS [°/100ft]	Comments
8525.00†	90.000	267.120	7097.00	421.66	-776.39	-310.90	0.00	
8625.00†	90.000	267.120	7097.00	521.19	-781.42	-410.78	0.00	
8725.00†	90.000	267.120	7097.00	620.72	-786.44	-510.65	0.00	
8825.00†	90.000	267.120	7097.00	720.24	-791.47	-610.52	0.00	
8925.00†	90.000	267.120	7097.00	819.77	-796.49	-710.40	0.00	
9025.00†	90.000	267.120	7097.00	919.30	-801.52	-810.27	0.00	
9125.00†	90.000	267.120	7097.00	1018.82	-806.54	-910.15	0.00	
9225.00†	90.000	267.120	7097.00	1118.35	-811.57	-1010.02	0.00	
9325.00†	90.000	267.120	7097.00	1217.88	-816.59	-1109.89	0.00	
9425.00†	90.000	267.120	7097.00	1317.41	-821.62	-1209.77	0.00	
9525.00†	90.000	267.120	7097.00	1416.93	-826.64	-1309.64	0.00	
9625.00†	90.000	267.120	7097.00	1516.46	-831.66	-1409.51	0.00	
9725.00†	90.000	267.120	7097.00	1615.99	-836.69	-1509.39	0.00	
9825.00†	90.000	267.120	7097.00	1715.52	-841.71	-1609.26	0.00	
9925.00†	90.000	267.120	7097.00	1815.04	-846.74	-1709.13	0.00	
10025.00†	90.000	267.120	7097.00	1914.57	-851.76	-1809.01	0.00	
10125.00†	90.000	267.120	7097.00	2014.10	-856.79	-1908.88	0.00	
10225.00†	90.000	267.120	7097.00	2113.62	-861.81	-2008.76	0.00	
10325.00†	90.000	267.120	7097.00	2213.15	-866.84	-2108.63	0.00	
10425.00†	90.000	267.120	7097.00	2312.68	-871.86	-2208.50	0.00	
10525.00†	90.000	267.120	7097.00	2412.21	-876.88	-2308.38	0.00	
10625.00†	90.000	267.120	7097.00	2511.73	-881.91	-2408.25	0.00	
10725.00†	90.000	267.120	7097.00	2611.26	-886.93	-2508.12	0.00	
10825.00†	90.000	267.120	7097.00	2710.79	-891.96	-2608.00	0.00	
10925.00†	90.000	267.120	7097.00	2810.31	-896.98	-2707.87	0.00	
11025.00†	90.000	267.120	7097.00	2909.84	-902.01	-2807.75	0.00	
11125.00†	90.000	267.120	7097.00	3009.37	-907.03	-2907.62	0.00	
11225.00†	90.000	267.120	7097.00	3108.90	-912.06	-3007.49	0.00	
11325.00†	90.000	267.120	7097.00	3208.42	-917.08	-3107.37	0.00	
11425.00†	90.000	267.120	7097.00	3307.95	-922.11	-3207.24	0.00	



Planned Wellpath Report

GOETZEL 33C-30-M REV-A.0 PWP

Page 6 of 8



REFERENCE WELLPATH IDENTIFICATION

Operator	SYNERGY RESOURCES CORPORATION	Slot	SLOT#18 GOETZEL 33C-30-M (2217'FSL & 2053'FWL, SEC.29)
Area	COLORADO	Well	GOETZEL 33C-30-M
Field	WELD COUNTY (NAD83,TRUE NORTH)	Wellbore	GOETZEL 33C-30-M PWB
Facility	SEC.29-T06N-R66W		

WELLPATH DATA (166 stations) † = interpolated/extrapolated station

MD [ft]	Inclination [°]	Azimuth [°]	TVD [ft]	Vert Sect [ft]	North [ft]	East [ft]	DLS [°/100ft]	Comments
11525.00†	90.000	267.120	7097.00	3407.48	-927.13	-3307.11	0.00	
11625.00†	90.000	267.120	7097.00	3507.01	-932.15	-3406.99	0.00	
11725.00†	90.000	267.120	7097.00	3606.53	-937.18	-3506.86	0.00	
11825.00†	90.000	267.120	7097.00	3706.06	-942.20	-3606.73	0.00	
11925.00†	90.000	267.120	7097.00	3805.59	-947.23	-3706.61	0.00	
12025.00†	90.000	267.120	7097.00	3905.11	-952.25	-3806.48	0.00	
12125.00†	90.000	267.120	7097.00	4004.64	-957.28	-3906.36	0.00	
12225.00†	90.000	267.120	7097.00	4104.17	-962.30	-4006.23	0.00	
12325.00†	90.000	267.120	7097.00	4203.70	-967.33	-4106.10	0.00	
12425.00†	90.000	267.120	7097.00	4303.22	-972.35	-4205.98	0.00	
12525.00†	90.000	267.120	7097.00	4402.75	-977.38	-4305.85	0.00	
12625.00†	90.000	267.120	7097.00	4502.28	-982.40	-4405.72	0.00	
12725.00†	90.000	267.120	7097.00	4601.81	-987.42	-4505.60	0.00	
12825.00†	90.000	267.120	7097.00	4701.33	-992.45	-4605.47	0.00	
12925.00†	90.000	267.120	7097.00	4800.86	-997.47	-4705.35	0.00	
13025.00†	90.000	267.120	7097.00	4900.39	-1002.50	-4805.22	0.00	
13125.00†	90.000	267.120	7097.00	4999.91	-1007.52	-4905.09	0.00	
13225.00†	90.000	267.120	7097.00	5099.44	-1012.55	-5004.97	0.00	
13325.00†	90.000	267.120	7097.00	5198.97	-1017.57	-5104.84	0.00	
13425.00†	90.000	267.120	7097.00	5298.50	-1022.60	-5204.71	0.00	
13525.00†	90.000	267.120	7097.00	5398.02	-1027.62	-5304.59	0.00	
13625.00†	90.000	267.120	7097.00	5497.55	-1032.64	-5404.46	0.00	
13725.00†	90.000	267.120	7097.00	5597.08	-1037.67	-5504.34	0.00	
13825.00†	90.000	267.120	7097.00	5696.60	-1042.69	-5604.21	0.00	
13925.00†	90.000	267.120	7097.00	5796.13	-1047.72	-5704.08	0.00	
14025.00†	90.000	267.120	7097.00	5895.66	-1052.74	-5803.96	0.00	
14125.00†	90.000	267.120	7097.00	5995.19	-1057.77	-5903.83	0.00	
14225.00†	90.000	267.120	7097.00	6094.71	-1062.79	-6003.70	0.00	
14325.00†	90.000	267.120	7097.00	6194.24	-1067.82	-6103.58	0.00	
14425.00†	90.000	267.120	7097.00	6293.77	-1072.84	-6203.45	0.00	



Planned Wellpath Report

GOETZEL 33C-30-M REV-A.0 PWP

Page 7 of 8



REFERENCE WELLPATH IDENTIFICATION

Operator	SYNERGY RESOURCES CORPORATION	Slot	SLOT#18 GOETZEL 33C-30-M (2217'FSL & 2053'FWL, SEC.29)
Area	COLORADO	Well	GOETZEL 33C-30-M
Field	WELD COUNTY (NAD83,TRUE NORTH)	Wellbore	GOETZEL 33C-30-M PWB
Facility	SEC.29-T06N-R66W		

WELLPATH DATA (166 stations) † = interpolated/extrapolated station

MD [ft]	Inclination [°]	Azimuth [°]	TVD [ft]	Vert Sect [ft]	North [ft]	East [ft]	DLS [°/100ft]	Comments
14525.00†	90.000	267.120	7097.00	6393.30	-1077.87	-6303.32	0.00	
14625.00†	90.000	267.120	7097.00	6492.82	-1082.89	-6403.20	0.00	
14725.00†	90.000	267.120	7097.00	6592.35	-1087.91	-6503.07	0.00	
14825.00†	90.000	267.120	7097.00	6691.88	-1092.94	-6602.95	0.00	
14925.00†	90.000	267.120	7097.00	6791.40	-1097.96	-6702.82	0.00	
15025.00†	90.000	267.120	7097.00	6890.93	-1102.99	-6802.69	0.00	
15125.00†	90.000	267.120	7097.00	6990.46	-1108.01	-6902.57	0.00	
15225.00†	90.000	267.120	7097.00	7089.99	-1113.04	-7002.44	0.00	
15325.00†	90.000	267.120	7097.00	7189.51	-1118.06	-7102.31	0.00	
15425.00†	90.000	267.120	7097.00	7289.04	-1123.09	-7202.19	0.00	
15525.00†	90.000	267.120	7097.00	7388.57	-1128.11	-7302.06	0.00	
15625.00†	90.000	267.120	7097.00	7488.10	-1133.13	-7401.94	0.00	
15725.00†	90.000	267.120	7097.00	7587.62	-1138.16	-7501.81	0.00	
15825.00†	90.000	267.120	7097.00	7687.15	-1143.18	-7601.68	0.00	
15925.00†	90.000	267.120	7097.00	7786.68	-1148.21	-7701.56	0.00	
15961.54	90.000	267.120	7097.00 ²	7823.05	-1150.04	-7738.05	0.00	End of Tangent

HOLE & CASING SECTIONS - Ref Wellbore: GOETZEL 33C-30-M PWB Ref Wellpath: GOETZEL 33C-30-M REV-A.0 PWP

String/Diameter	Start MD [ft]	End MD [ft]	Interval [ft]	Start TVD [ft]	End TVD [ft]	Start N/S [ft]	Start E/W [ft]	End N/S [ft]	End E/W [ft]
13.5in Open Hole	25.00	1700.00	1675.00	25.00	1696.63	0.00	0.00	-22.84	47.42
8.5in Open Hole	1700.00	15961.00	14261.00	1696.63	7097.00	-22.84	47.42	-1150.02	-7737.51



Planned Wellpath Report

GOETZEL 33C-30-M REV-A.0 PWP

Page 8 of 8



REFERENCE WELLPATH IDENTIFICATION

Operator	SYNERGY RESOURCES CORPORATION	Slot	SLOT#18 GOETZEL 33C-30-M (2217'FSL & 2053'FWL, SEC.29)
Area	COLORADO	Well	GOETZEL 33C-30-M
Field	WELD COUNTY (NAD83,TRUE NORTH)	Wellbore	GOETZEL 33C-30-M PWB
Facility	SEC.29-T06N-R66W		

TARGETS

Name	MD [ft]	TVD [ft]	North [ft]	East [ft]	Grid East [US ft]	Grid North [US ft]	Latitude	Longitude	Shape
SEC.29-T06N-R66W NORTHERN		9.00	1282.39	821.99	3194449.66	1411671.99	40°27'40.817"N	104°48'04.259"W	polygon
SEC.29-T06N-R66W SOUTHERN		9.00	1282.39	821.99	3194449.66	1411671.99	40°27'40.817"N	104°48'04.259"W	polygon
SEC.30-T06N-R66W NORTHERN		9.00	1282.39	821.99	3194449.66	1411671.99	40°27'40.817"N	104°48'04.259"W	polygon
SEC.30-T06N-R66W SOUTHERN		9.00	1282.39	821.99	3194449.66	1411671.99	40°27'40.817"N	104°48'04.259"W	polygon
GOETZEL 33C-30-M BHL ON PLAT (1430'FSL & 510'FWL SEC.30)		7097.00	-1130.48	-7377.93	3186269.24	1409194.94	40°27'16.963"N	104°49'50.333"W	circle
2) GOETZEL 33C-30-M BHL REV-1 (1430'FSL & 150'FWL SEC.30)	15961.54	7097.00	-1150.04	-7738.05	3185909.30	1409172.56	40°27'16.769"N	104°49'54.991"W	point
1) GOETZEL 33C-30-M TOP OF PROD (1469'FSL & 2572'FWL SEC.29)	7697.95	7097.00	-734.84	515.10	3194158.62	1409652.49	40°27'20.884"N	104°48'08.230"W	circle

SURVEY PROGRAM - Ref Wellbore: GOETZEL 33C-30-M PWB Ref Wellpath: GOETZEL 33C-30-M REV-A.0 PWP

Start MD [ft]	End MD [ft]	Positional Uncertainty Model	Log Name/Comment	Wellbore
25.00	1700.00	Custom BHI NaviTrak (Standard Rotating+Axial Corr) (Rockies 0.03Gt model)		GOETZEL 33C-30-M PWB
1700.00	15961.54	Custom BHI AutoTrak Curve (IFR1, Short) (Rockies 0.03Gt model)		GOETZEL 33C-30-M PWB