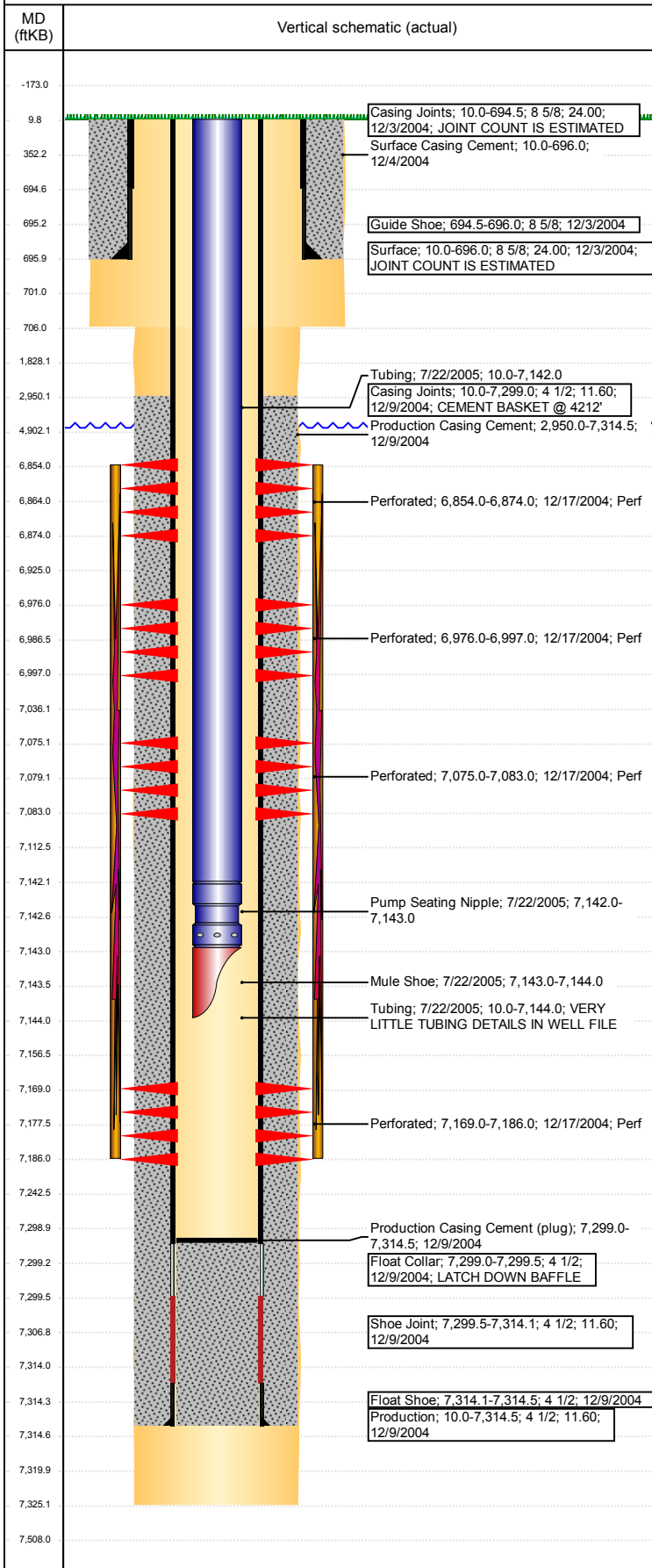


Well Name: KESSLER 19-21

VERTICAL - ORIGINAL HOLE, 5/1/2017 3:08:52 PM



Well Header

API 05-123-22379	Business Unit DJ BASIN	District 15	Well Config VERTICAL
Original KB Elevation (ft) 4,801	KB - GL / MSL (ftKB) 10.00	Spud Date 12/2/2004	P & A Date

Comment
CBL N/A IN GREELEY WELL FILE. VERY LITTLE TUBING DETAILS IN WELL FILE.

Directions To Well

Congressional Location

Quarter 3 NE	Quarter 4 NW	Section 19	Township 6	Twntshp N/S Dir N	Range 66	Range E/W Dir W
-----------------	-----------------	---------------	---------------	----------------------	-------------	--------------------

Bottom Hole Location

North-South Distance (ft)	From N or S Line	East-West Distance (ft)	From E or W Line
---------------------------	------------------	-------------------------	------------------

Plug Back Total Depths

Date	Depth (ftKB)	Method	Com
12/9/2004	7,299.0	CASING TALLY	TOP OF LATCH DOWN BAFFLE
12/16/2004	7,281.0	CASED HOLE LOG	DEPTH LOGGER ON CBL
7/22/2005	7,299.0	TAG	MOST RECENT CLEAN OUT

Wellbore Sections

Section Des	Size (in)	Act Top, MD (ftKB)	Act Btm, MD (ftKB)
SURFACE	12 1/4	10	706
PRODUCTION	7 7/8	706	7,325

Zone Statuses

Zone Name	Status Date	Status	Fluid Type	Job	Prod Method
NIOBRARA	2/16/2005	PR		DRILLING/CO...	
CODELL	2/16/2005	PR		DRILLING/CO...	

Casing Strings

Surface, 696.0ftKB

Casing Description	Run Date	OD (in)	Wt/Len (l...)	Grade	Top, MD (ft...)	MD (ftKB)
Surface	12/3/2004	8 5/8	24.00		10.0	696.0

Production, 7,314.5ftKB

Casing Description	Run Date	OD (in)	Wt/Len (l...)	Grade	Top, MD (ft...)	MD (ftKB)
Production	12/9/2004	4 1/2	11.60		10.0	7,314.5

Cement

Description	Top Depth (ftKB)	Bottom Depth (ftKB)
Surface Casing Cement	10.0	696.0
Production Casing Cement	2,950.0	7,314.5

Tubing Strings

Tubing Description	Run Date	String...	ID (in)	Wt (lb/ft)	Grade	Len (ft)	Set De...
Tubing	7/22/2005	2 3/8				7,134.00	

Tubing Components

Item Des	OD (in)	Wt (lb/ft)	Grade	Jts	Len (ft)	Btm (ftKB)	Btm (TVD) (ftKB)
Tubing	2 3/8			234	7,132.00	7,142.0	
Pump Seating Nipple	2 3/8	1.10			1.00	7,143.0	
Mule Shoe	2 3/8				1.00	7,144.0	

Other In Hole

Run Date	Des	OD (in)	Top (ftKB)	Btm (ftKB)

Logs

Date	Type	Top, MD (ftKB)	Btm, MD (ftKB)
12/8/2004	COMPENSATED DENSITY	3,450.0	7,295.0
12/8/2004	INDUCTION	696.0	7,315.0
12/16/2004	CBL/CCL/GR	2,700.0	7,279.0

Perforation Data

Linked Zone	Bnch/St g	Sum of Entered Shot Total	Top (ftKB)	Btm (ftKB)	Date
NIOBRARA, ORIGINAL HOLE	A	80	6,854.00	6,874.00	12/17/2004
NIOBRARA, ORIGINAL HOLE	B	21	6,976.00	6,997.00	12/17/2004
NIOBRARA, ORIGINAL HOLE	C	32	7,075.00	7,083.00	12/17/2004
CODELL, ORIGINAL HOLE		68	7,169.00	7,186.00	12/17/2004
Total (Sum)		201			

Well Name: KESSLER 19-21

VERTICAL - ORIGINAL HOLE, 5/1/2017 3:08:53 PM

Stimulation Intervals

Start Date 12/22/2004	Primary Job Type DRILLING/COMPLETION - ORIGINAL	
Technical Result	Tech Result Details	Tech Result Note
Comment LIMITED ENTRY FRAC BROKE CODELL W/1000 GAL 15% HCL		

