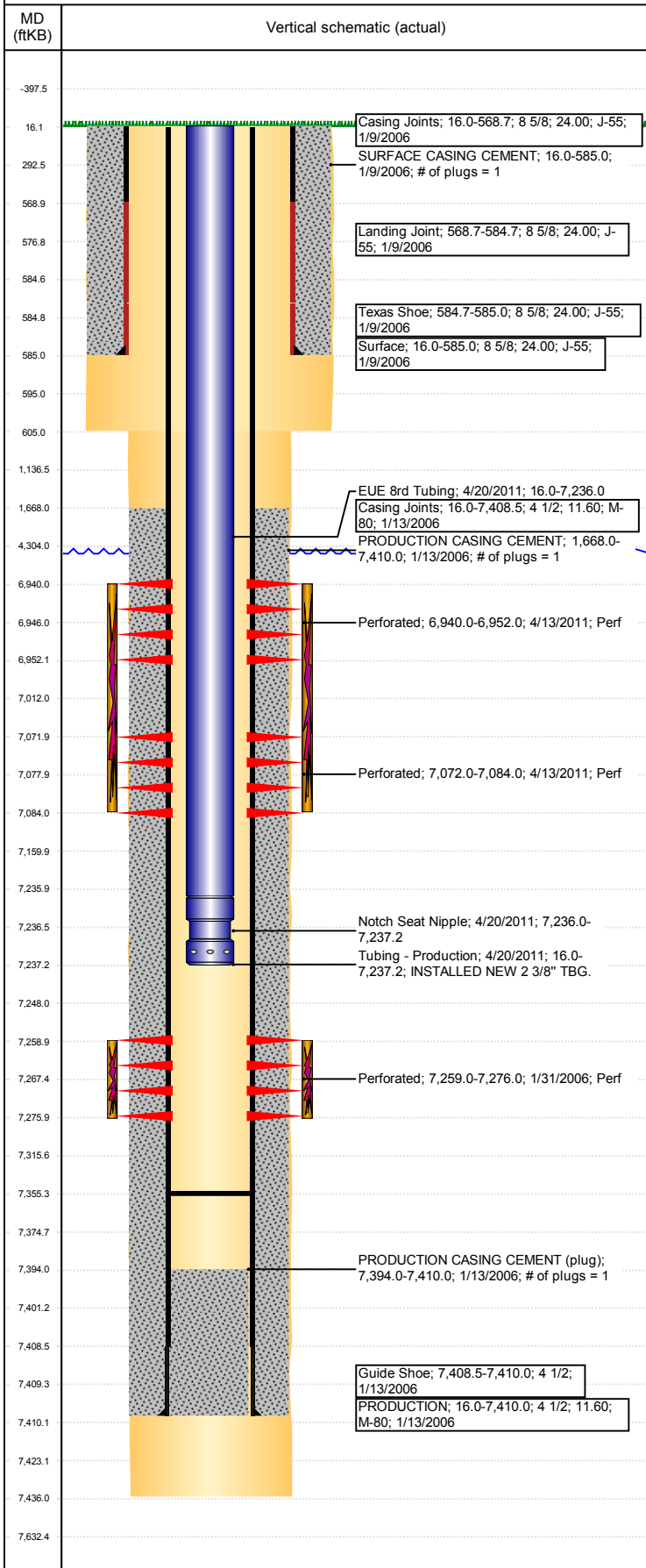


Operations Wellbore Schematic Report

Well Name: AUSTYN J09-19

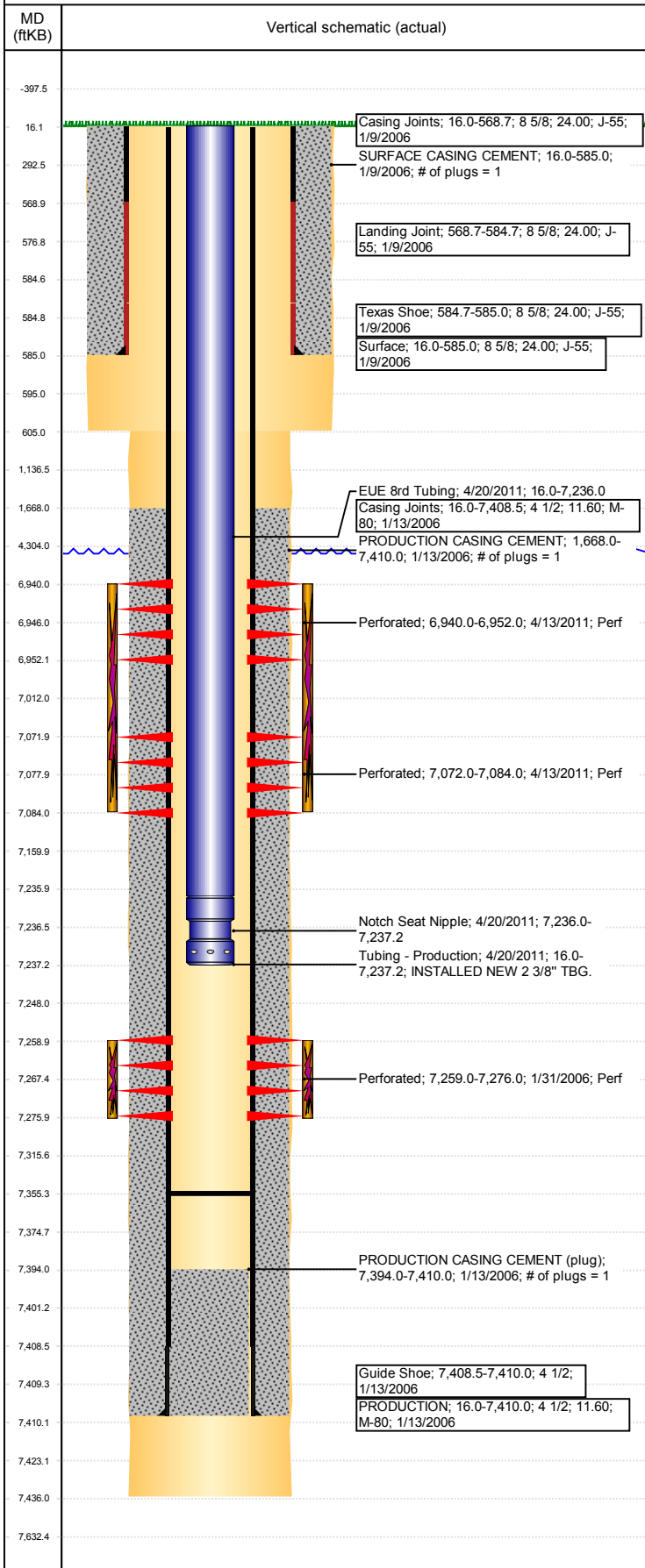
DEVIATED - ORIGINAL HOLE, 4/28/2017 9:33:33 AM



Well Header			
API 05-123-23259	Business Unit DJ BASIN	District 15	Well Config DEVIATED
Original KB Elevation (ft) 4,775	KB - GL / MSL (ftKB) 16.00	Spud Date 1/9/2006	P & A Date
Comment DIRECTIONAL WELLBORE			
Directions To Well 71ST AVE & 10TH ST. SOUTH .25, EAST .1 INTO.			
Current PBTD (mKB) ORIGINAL HOLE - 7,355.5			
Surface Location (Congressional)			
Quarter 3 NW	Quarter 4 NW	Section 9	Township 5 N
Twntshp N/S Dir N	Range 66	Range E/W Dir W	
Bottom Hole Location			
North-South Distance (ft) 1,320.0	From N or S Line N	East-West Distance (ft) 1,324.0	From E or W Line W
Plug Back Total Depths			
Date	Depth (ftKB)	Method	Com
1/13/2006	7,356.0	CASED HOLE LOG	DEPTH LOGGER ON CBL
1/13/2006	7,394.0	CASING TALLY	FLOAT SHOE
4/19/2011	7,355.5	TAG	C/O, TBG TALLY MEASUREMENT.
Wellbore Sections			
Section Des	Size (in)	Act Top, MD (ftKB)	Act Btm, MD (ftKB)
SURFACE	12 1/4	16	605
PRODUCTION	7 7/8	605	7,436
Zone Statuses			
Zone Name	Status Date	Status	Fluid Type
CODELL	2/12/2006	PR	DRILLING/COMPLETION - ORIGINAL, 11/6/2005...
CODELL	4/15/2011	PR	RE-FRAC & RECOMPLETE, 3/23/2011 13:00
NIOBRARA	4/15/2011	PR	RE-FRAC & RECOMPLETE, 3/23/2011 13:00
Casing Strings			
Csg Des	Run Date	OD (in)	Wt/Len (lb/ft)
Surface	1/9/2006	8 5/8	24.00
PRODUCTION	1/13/2006	4 1/2	11.60
Cement			
Des	Top (ftKB)	Btm (ftKB)	
SURFACE CASING CEMENT	16.0	585.0	
PRODUCTION CASING CEMENT	1,668.0	7,410.0	
Tubing Components			
Item Des	OD (in)	Wt (lb/ft)	Grade
EUE 8rd Tubing	2 3/8	4.70	J-55
Notch Seat Nipple	2 3/8	4.70	N-80
Perforation Data			
Linked Zone	Bnch/Stg	Sum of Entered Shot Total	Date
NIOBRARA, ORIGINAL HOLE	A	24	4/13/2011
NIOBRARA, ORIGINAL HOLE	B	24	4/13/2011
CODELL, ORIGINAL HOLE		68	1/31/2006
Total (Sum)		116	
Other In Hole			
Run Date	Des	OD (in)	Top (ftKB)
Logs			
Date	Type	Top, MD (ftKB)	Btm, MD (ftKB)
1/12/2006	COMPENSATED DENSITY	585.0	7,409.0
1/12/2006	INDUCTION	585.0	7,409.0
1/27/2006	CBL/CCL/GR	585.0	7,409.0
Stimulation Intervals			
Bnch/Stg	Start Date	Primary Job Type	
	2/10/2006	DRILLING/COMPLETION - ORIGINAL	
Comment			
Volume Slurry Total (gal) 127,596.00			
Treat Pressure Avg (psi)	Treat Pressure Max (psi)	Slurry Rate Avg (bbl/min)	Slurry Rate Max (bbl/min)
6,145.0	6,918.0	14.8	14.0

Well Name: AUSTYN J09-19

DEVIATED - ORIGINAL HOLE, 4/28/2017 9:33:33 AM



Stimulation Intervals

Bnch/Stg	Start Date	Primary Job Type	
	4/13/2011	RE-FRAC & RECOMPLETE	
Comment (CODELL RF): PRE-JOB ISDP 2124 AND PRE-JOB 5 MIN 886 PSI. INCREASED RATE TO 20 BPM. JOB TREATED WELL WITH A AVERAGE NOLTE OF +0.19.			
Volume Slurry Total (gal) 141,439.62			
Treat Pressure Avg (psi)	Treat Pressure Max (psi)	Slurry Rate Avg (bbl/min)	Slurry Rate Max (bbl/min)
3,579.0	3,715.0	20.5	20.9
Bnch/Stg	Start Date	Primary Job Type	
	4/13/2011	RE-FRAC & RECOMPLETE	
Comment (NIOBRARA): JOB WENT WELL WITH NO ISSUES TO REPORT.			
Volume Slurry Total (gal) 164,930.65			
Treat Pressure Avg (psi)	Treat Pressure Max (psi)	Slurry Rate Avg (bbl/min)	Slurry Rate Max (bbl/min)
4,181.0	4,591.0	45.1	49.8