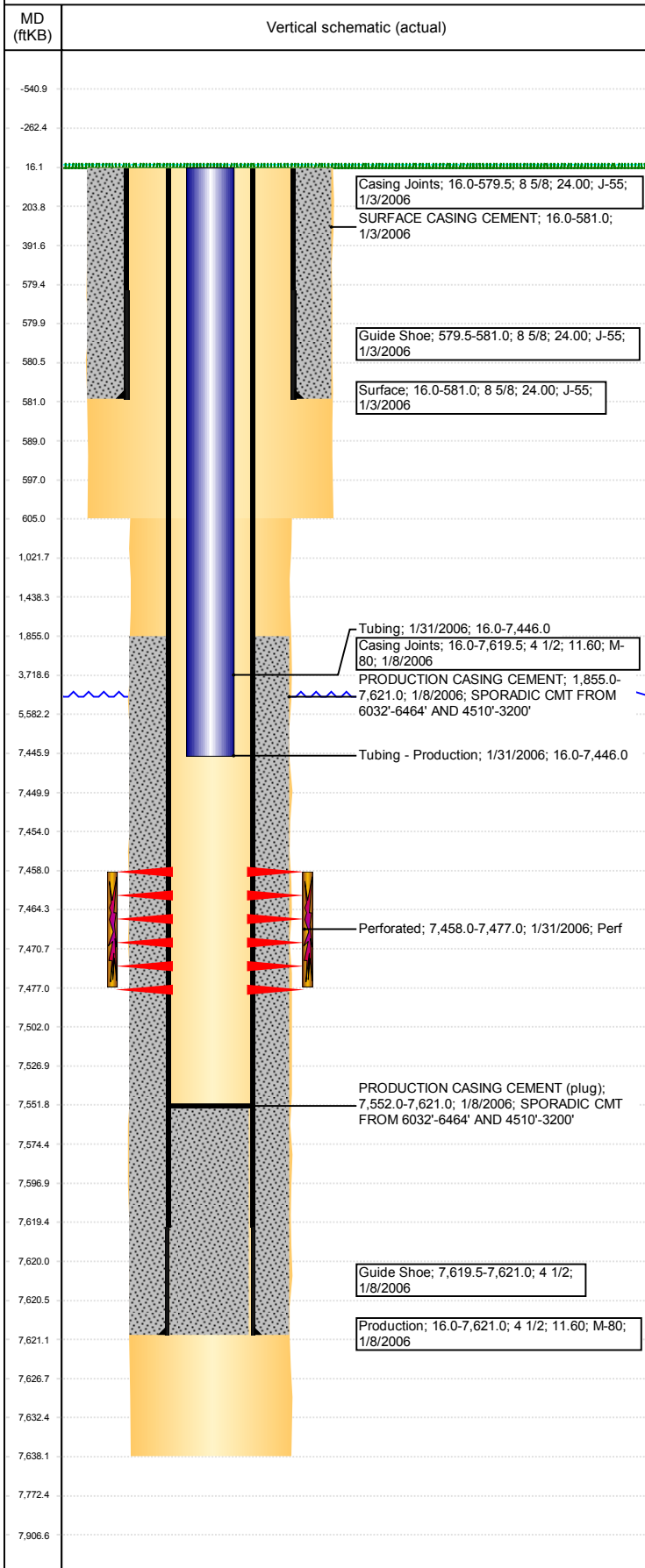


Operations Wellbore Schematic Report

Well Name: AUSTYN J09-06

DEVIATED - ORIGINAL HOLE, 4/28/2017 9:31:26 AM



Well Header			
API 05-123-23258	Business Unit DJ BASIN	District 15	Well Config DEVIATED
Original KB Elevation (ft) 4,775	KB - GL / MSL (ftKB) 16.00	Spud Date 1/3/2006	P & A Date
Comment SPUD DATE DISCREPANCY - REPORTS SAY 1/3/2006 STATE COMPLETION REPORT SAYS 1/4/2006			
Directions To Well 71ST AVE & 10TH ST, S 1/4 E 1/10 INTO			
Current PBTD (mKB) ORIGINAL HOLE - 7,552.0			
Surface Location (Congressional)			
Quarter 3 SE	Quarter 4 NW	Section 9	Township 5 N
Township N/S Dir N	Range 66	Range E/W Dir W	
Bottom Hole Location			
North-South Distance (ft) 1,017.0	From N or S Line FNL	East-West Distance (ft) 1,084.0	From E or W Line FWL
Plug Back Total Depths			
Date	Depth (ftKB)	Method	Com
1/8/2006	7,577.0	CASING TALLY	SHOE JOINT
1/27/2006	7,552.0	CASED HOLE LOG	DEPTH LOGGER ON CBL
Wellbore Sections			
Section Des	Size (in)	Act Top, MD (ftKB)	Act Btm, MD (ftKB)
SURFACE	12 1/4	16	605
PRODUCTION	7 7/8	605	7,638
Zone Statuses			
Zone Name	Status Date	Status	Fluid Type
CODELL	2/15/2006	PR	
Job DRILLING/COMPLETION - ORIGINAL, 1/3/2006...			
Prod Method			
Casing Strings			
Csg Des	Run Date	OD (in)	Wt/Len (lb/ft)
Surface	1/3/2006	8 5/8	24.00
Production	1/8/2006	4 1/2	11.60
Grade	Top, MD (ftKB)	MD (ftKB)	
J-55	16.0	581.0	
M-80	16.0	7,621.0	
Cement			
Des	Top (ftKB)	Btm (ftKB)	
SURFACE CASING CEMENT	16.0	581.0	
PRODUCTION CASING CEMENT	1,855.0	7,621.0	
Tubing Components			
Item Des	OD (in)	Wt (lb/ft)	Grade
Tubing	2 3/8	4.70	J-55
Jts	Len (ft)		
226	7,430.00		
Perforation Data			
Linked Zone	Bnch/Stg	Sum of Entered Shot Total	Top (ftKB)
CODELL, ORIGINAL HOLE		76	7,458.00
Btm (ftKB)	Date		
7,477.00	1/31/2006		
Total (Sum)			
		76	
Other In Hole			
Run Date	Des	OD (in)	Top (ftKB)
Btm (ftKB)			
Logs			
Date	Type	Top, MD (ftKB)	Btm, MD (ftKB)
1/7/2006	COMPENSATED DENSITY	581.0	7,604.0
1/8/2006	INDUCTION	581.0	7,624.0
1/27/2006	CEMENT BOND	5,200.0	7,551.0
Stimulation Intervals			
Bnch/Stg	Start Date	Primary Job Type	
	2/13/2006	DRILLING/COMPLETION - ORIGINAL	
Comment			
Volume Slurry Total (gal) 126,336.00			
Treat Pressure Avg (psi)	Treat Pressure Max (psi)	Slurry Rate Avg (bbl/min)	Slurry Rate Max (bbl/min)
6,568.0	6,854.0	14.1	14.4