

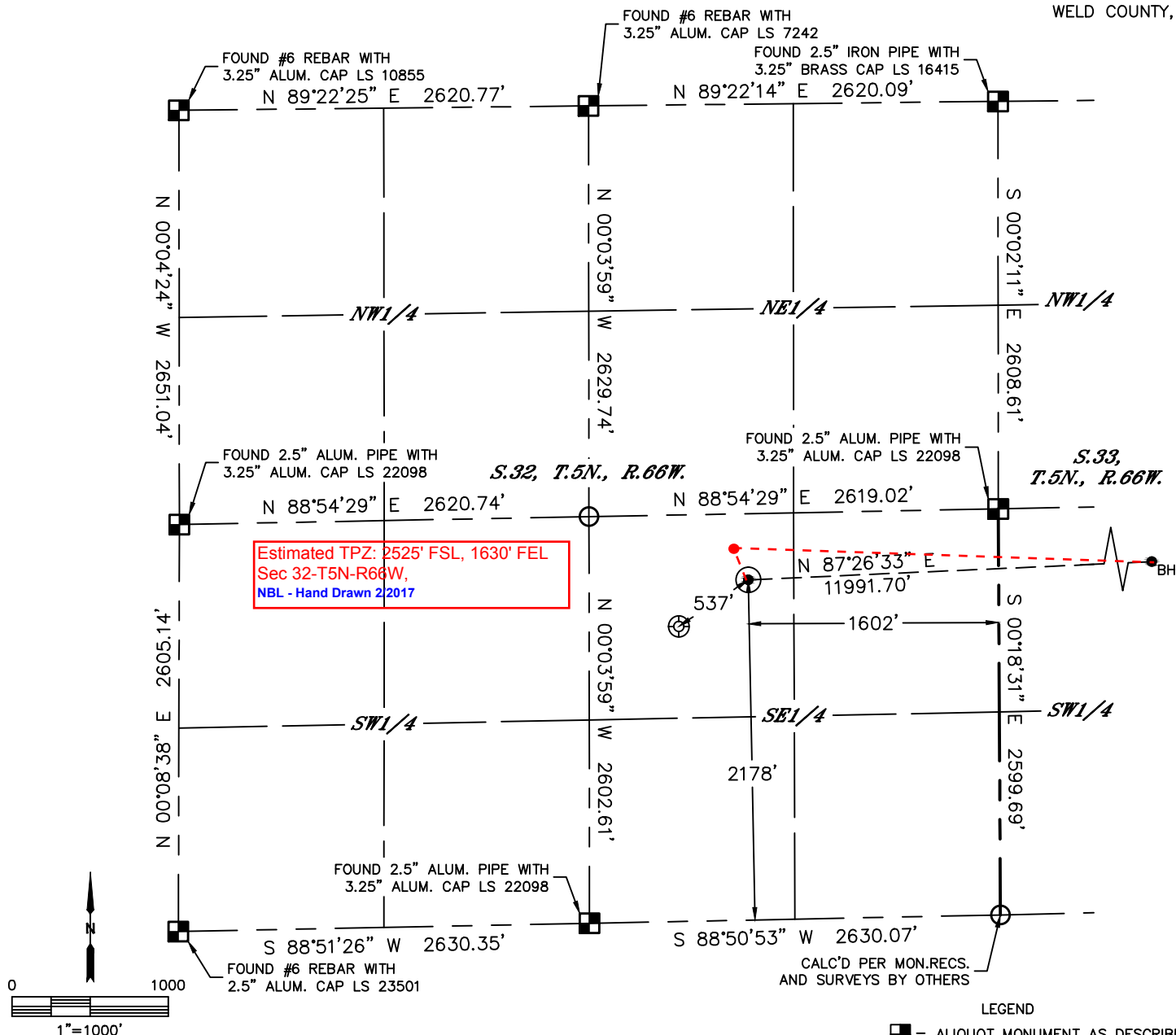


Lat40°, Inc. 6250 W. 10th Street, Unit 2, Greeley, CO 970-515-5294

# WELL LOCATION CERTIFICATE

FAIRWEATHER J32-650

SECTION: 32  
TOWNSHIP: 5N  
RANGE: 66W  
6TH. P.M.  
WELD COUNTY, CO



CLIENT: NOBLE ENERGY, INC.						LANDMAN: NICK HAFFNER			
INSTRUMENT OPERATOR: BRIAN ROTTINGHAUS						SURVEY DATE: 12/9/2016		SURFACE USE: CROP LAND	
SHL FOOTAGE			SHL LAT °		SHL LONG °	SHL PDOP	SHL ELEV (FT.)	SHL 1/4/1/4	SHL S-T-R
2178	FSL	1602	FEL	40.35487	-104.79993	1.8	4814	NWSE	32-5-66

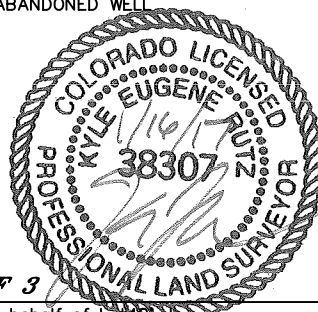
BHL FOOTAGE				BHL LAT °	BHL LONG °	BHL S-T-R
2640	FNL	460	FEL	40.35608	-104.75694	34-5-66

NEAREST EXISTING WELL IN SHL 1/4/1/4	
EXISTING SPOMER 10-32	±537' SW
NEAREST CULTURAL ITEMS	
BUILDING	±2628' SE
BUILDING UNIT	±2684' SE
HIGH OCCUPANCY BUILDING UNIT	5280'+
DESIGNATED OUTSIDE ACTIVITY AREA	5280'+
PUBLIC ROAD (TWO RIVERS PARKWAY)	±736' SW
ABOVE GROUND UTILITY	±1178' NW
RAILROAD	5280'+
PROPERTY LINE	±292' E

## NOTE:

- Bearings shown are Grid Bearings of the Colorado State Plane Coordinate System, North Zone, North American Datum 1983. The lineal dimensions as contained herein are based upon the "U.S. Survey Foot."
- Distances to section lines measured at 90 degrees from said section lines.
- Ground elevations are based on an observed GPS elevation (NAVD 1988 DATUM).
- Latitude and Longitude shown are (NAD 83 DATUM).
- IMPROVEMENTS: See LOCATION DRAWING for all visible improvements within 500' of oil and gas location.
- This map does not represent a boundary survey.

- LEGEND
- = ALIQUOT MONUMENT AS DESCRIBED
  - = CALCULATED POSITION
  - = SURFACE HOLE LOCATION (SHL)
  - ▲ = ENTRY POINT LOCATION (EP)
  - BH = BOTTOM HOLE LOCATION (BHL)
  - ⊕ = EXISTING WELL
  - ⊖ = ABANDONED WELL



SHEET 1 OF 3

Kyle E. Rutz—On behalf of Lat40°, Inc.  
Colorado Licensed Professional Land Surveyor No. 38307  
DATE: 1/16/2017  
PROJECT#: 2016030

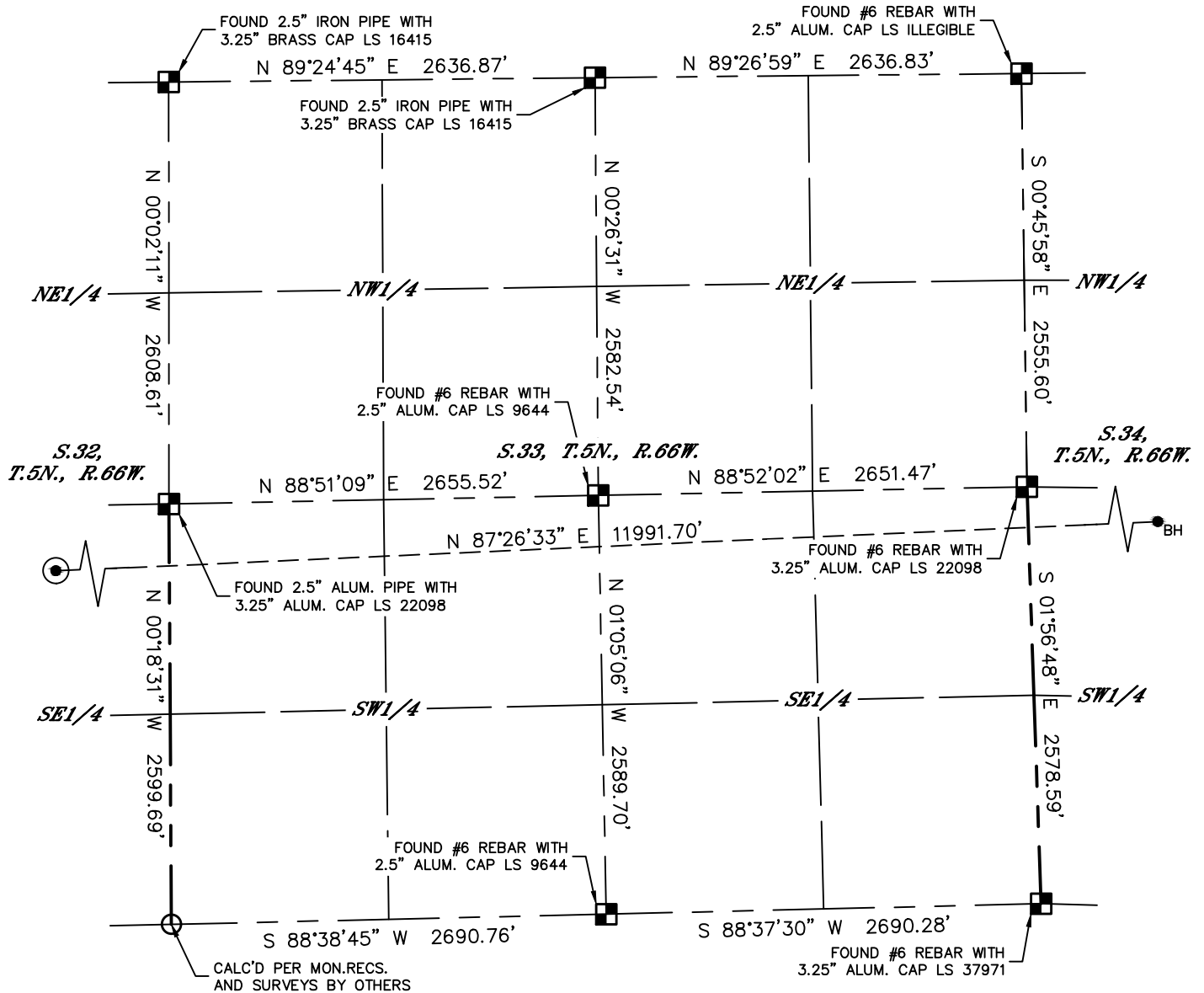


Lat40°, Inc. 6250 W. 10th Street, Unit 2, Greeley, CO 970-515-5294

# WELL LOCATION CERTIFICATE

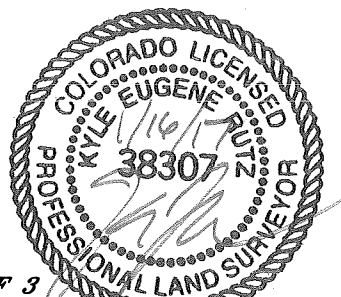
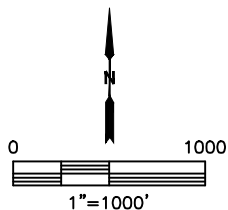
FAIRWEATHER J32-650

SECTION: 32  
TOWNSHIP: 5N  
RANGE: 66W  
6TH. P.M.  
WELD COUNTY, CO



## LEGEND

- = ALIQUOT MONUMENT AS DESCRIBED
- = CALCULATED POSITION
- ⊙ = SURFACE HOLE LOCATION (SHL)
- ▲ = ENTRY POINT LOCATION (EP)
- = BOTTOM HOLE LOCATION (BHL)
- ⊕ = EXISTING WELL
- ⊖ = ABANDONED WELL



**SHEET 2 OF 3**

Kyle E. Rutz—On behalf of Lat40°, Inc.  
Colorado Licensed Professional Land Surveyor No. 38307  
DATE: 1/16/2017  
PROJECT#: 2016030

Kyle E. Rutz—On behalf of Lat40, Inc.  
Colorado Licensed Professional Land Surveyor No. 38307  
DATE: 1/16/2017  
PROJECT#: 2016030