

Photo#1:

Overview of Location to SW



April 17, 2017



COLORADO
Oil & Gas Conservation
Commission
Department of Natural Resources

Inspection Photos: Caerus Mesa N23-697
Loc#448427

Photo#2:

Wattles have been installed around Perimeter of Location. One Wattle on South Perimeter needs to be resealed.

Photo#3:



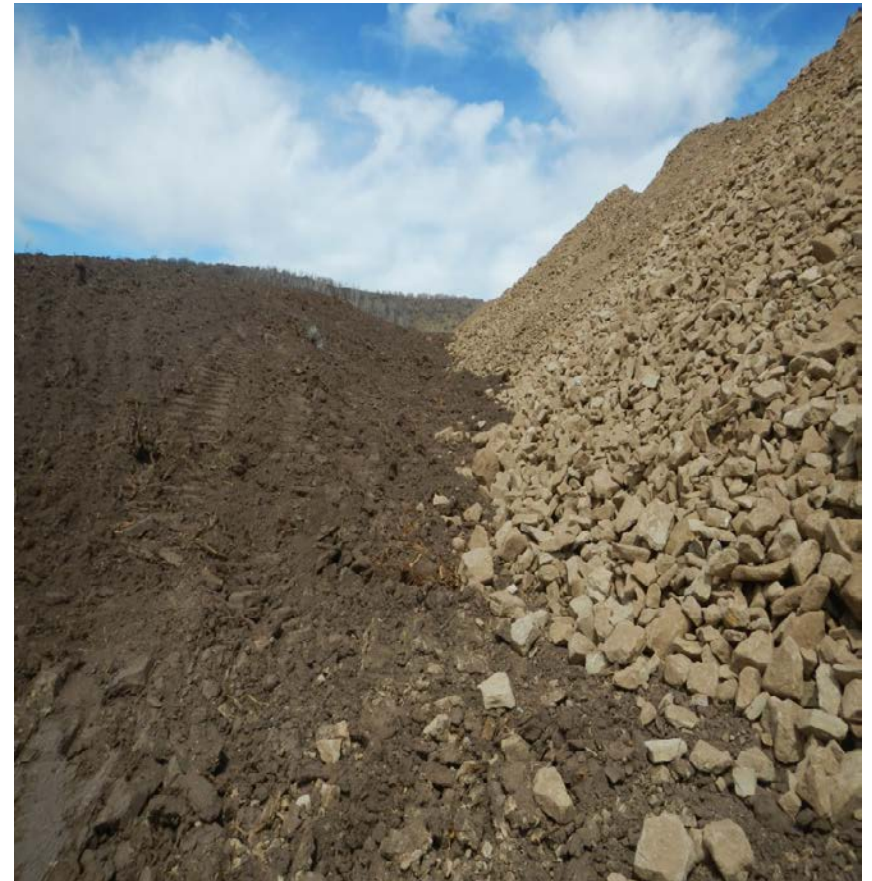
April 17,2017

Photo#4:

Topsoil has been Salvaged and piled at outside toe of Fill slope around Location Perimeter.



Photo#5:



April 17,2017

Photo#6:

Roughened in Retention & Detention Ponds are installed.

Photo#7:

Roughened in Retention & Detention Ponds are installed.



April 17,2017

Photo#8:

Ditches / Culverts installed along Access Rd. Recommended to install BMPs in ditch along bottom edge of Access Rd Cut Slope to control SW flow / Sediment migration.



April 17,2017