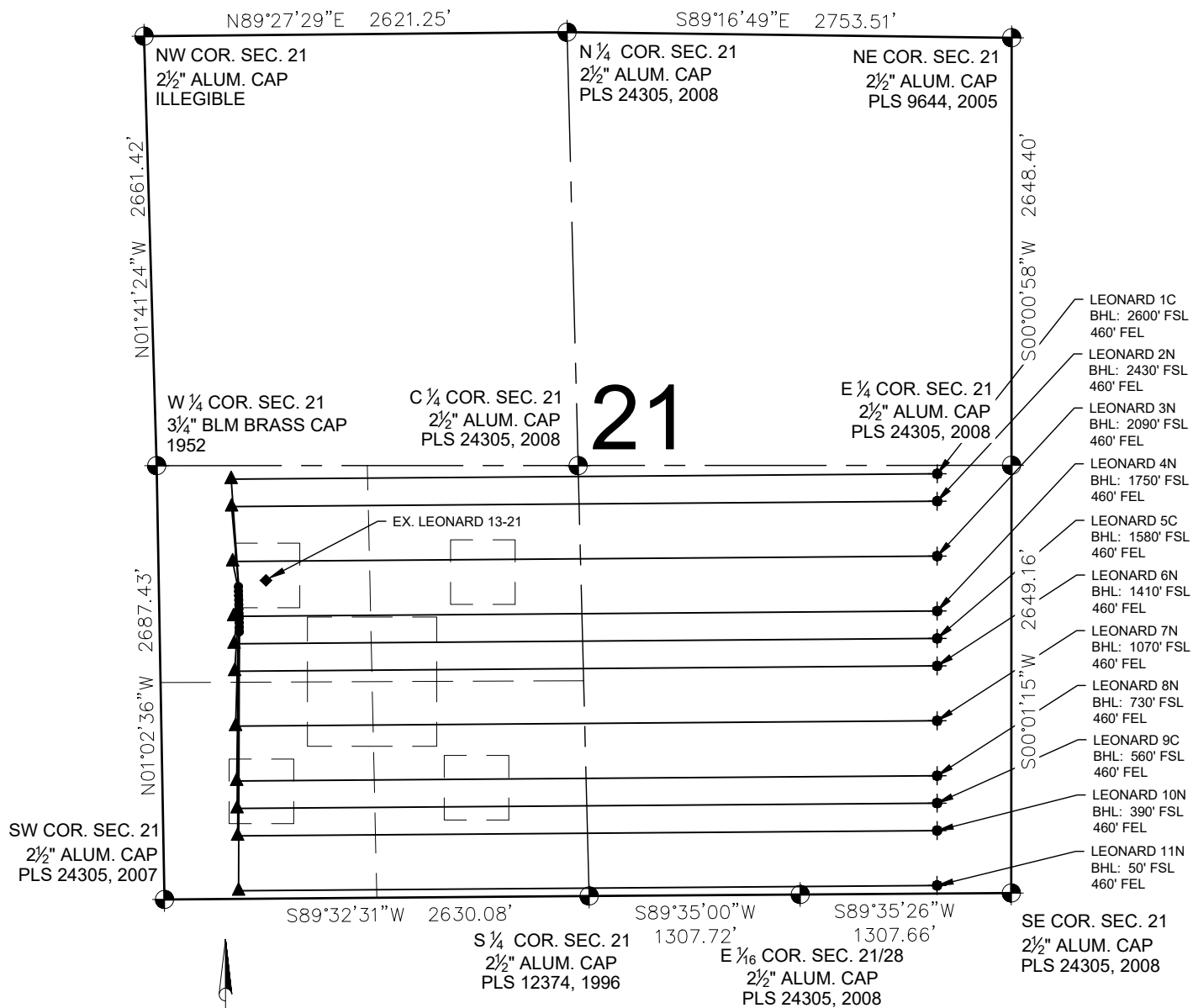


# LEONARD 21-I PAD MULTI-WELL PLAN



## LEGEND

- = EXISTING MONUMENT
- = CALCULATED POSITION
- = PROPOSED WELL
- ◆ = EXISTING WELL
- ◆ = BOTTOM HOLE
- ▲ = LANDING POINT
- LP = LANDING POINT
- BHL = BOTTOM HOLE LOCATION

## NOTES:

- THIS FIELD SURVEY CONFORMS TO THE MINIMUM STANDARDS SET BY THE C.O.G.C.C., RULE NO. 215
- BEARINGS AND DISTANCE SHOWN HEREON ARE GRID AND BASED ON THE COLORADO STATE PLANE COORDINATE SYSTEM, NAD 83/2011 BETWEEN MONUMENTS AS LABELED HEREON AND ELEVATIONS SHOWN ARE NAVD 88, AS DERIVED BY GPS OBSERVATIONS.
- GRID DISTANCES ARE SHOWN, AS MEASURED IN THE FIELD, WITH TIES TO WELLS MEASURED PERPENDICULAR TO SECTION LINES.

## NOTES:

- LEONARD 1C TO BE AT 1964' FSL & 494' FWL.  
BOTTOM HOLE AT 2600' FSL & 460' FEL.
- LEONARD 2N TO BE AT 1936' FSL & 494' FWL.  
BOTTOM HOLE AT 2430' FSL & 460' FEL.
- LEONARD 3N TO BE AT 1908' FSL & 494' FWL.  
BOTTOM HOLE AT 2090' FSL & 460' FEL.
- LEONARD 4N TO BE AT 1880' FSL & 494' FWL.  
BOTTOM HOLE AT 1750' FSL & 460' FEL.
- LEONARD 5C TO BE AT 1852' FSL & 494' FWL.  
BOTTOM HOLE AT 1580' FSL & 460' FEL.
- LEONARD 6N TO BE AT 1824' FSL & 494' FWL.  
BOTTOM HOLE AT 1410' FSL & 460' FEL.
- LEONARD 7N TO BE AT 1796' FSL & 494' FWL.  
BOTTOM HOLE AT 1070' FSL & 460' FEL.
- LEONARD 8N TO BE AT 1768' FSL & 494' FWL.  
BOTTOM HOLE AT 730' FSL & 460' FEL.
- LEONARD 9C TO BE AT 1740' FSL & 494' FWL.  
BOTTOM HOLE AT 560' FSL & 460' FEL.
- LEONARD 10N TO BE AT 1712' FSL & 494' FWL.  
BOTTOM HOLE AT 390' FSL & 460' FEL.
- LEONARD 11N TO BE AT 1684' FSL & 494' FWL.  
BOTTOM HOLE AT 50' FSL & 460' FEL.

EX. WELL LEONARD 13-21 IS AT 2000' FSL & 665' FWL.

PREPARED BY:



FIELD DATE:

11-08-16

DRAWING DATE:

03-22-17

BY:

CSG

CHECKED BY:

JLG

SITE NAME:

LEONARD 21-I PAD

SURFACE LOCATION:

NW 1/4 SW 1/4 SEC. 21 T2N, R67W, 6TH P.M.

WELD COUNTY, COLORADO

PREPARED FOR:

