

T4S, R65W, 6th P.M.

ConocoPhillips Company

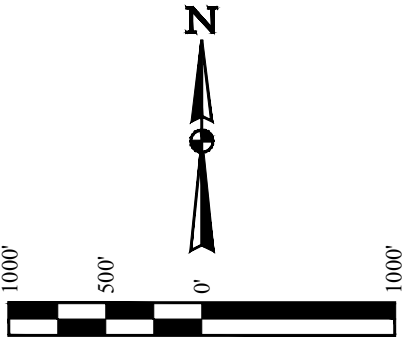
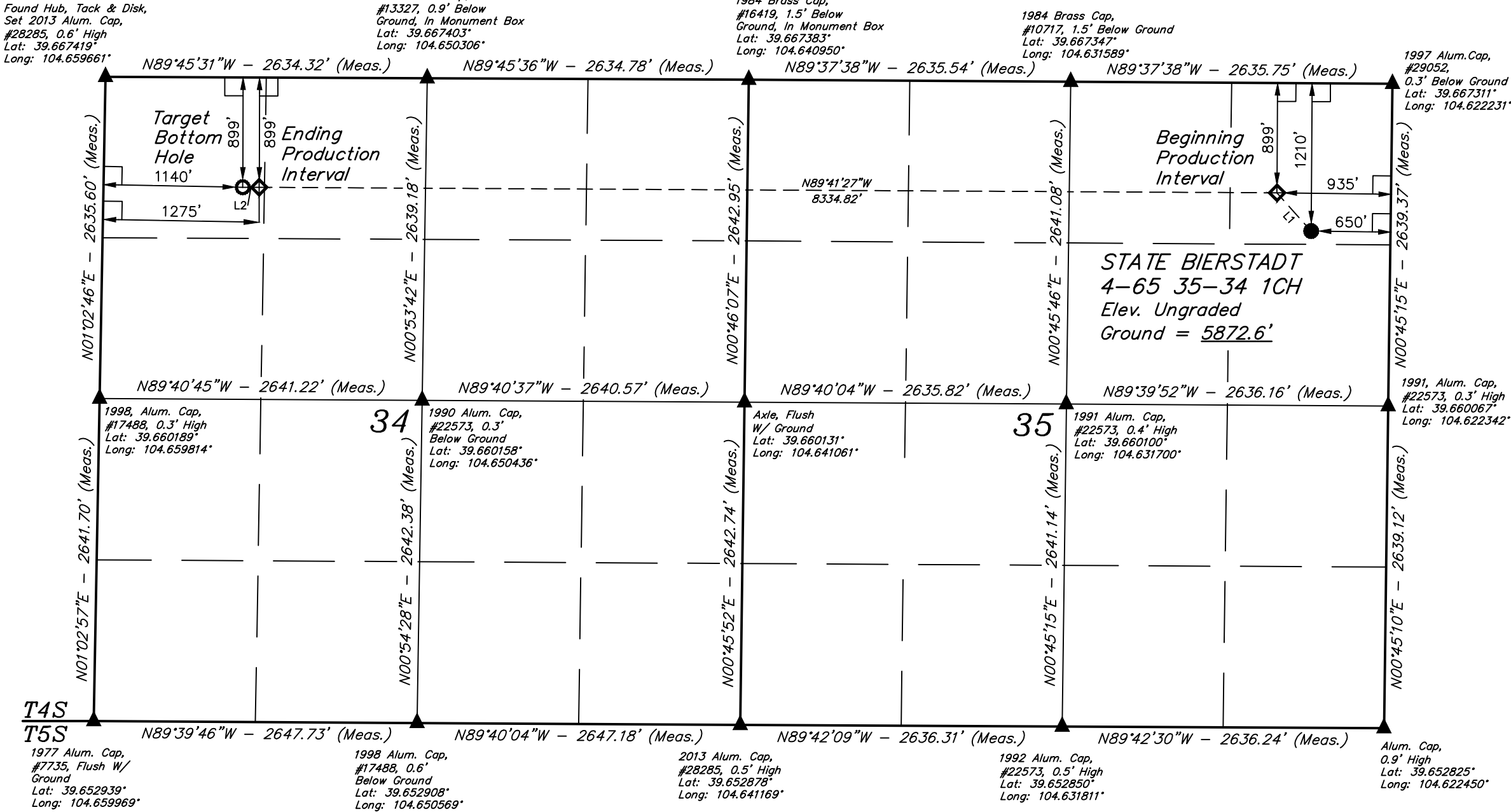
STATE BIERSTADT 4-65 35-34 1CH  
NE 1/4 NE 1/4, SECTION 35, T4S, R65W, 6th P.M.  
ARAPAHOE COUNTY, COLORADO

BASIS OF BEARINGS

BASIS OF BEARINGS IS A G.P.S. OBSERVATION

BASIS OF ELEVATION

BENCHMARK 374 LOCATED ON THE SECTION LINE BETWEEN  
SECTIONS 12 & 13, T5S, R64W, 6th. P.M., TAKEN FROM 1988  
PUBLISHED DATUM BY THE UNITED STATES DEPARTMENT OF  
THE INTERIOR, GEOLOGICAL SURVEY AS BEING 6054.61 FEET.



**T4S**  
1977 Alum. Cap, #7735, Flush W/ Ground, Lat: 39.652939°, Long: 104.659969°  
1998 Alum. Cap, #17488, 0.6' Below Ground, Lat: 39.652908°, Long: 104.650569°  
2013 Alum. Cap, #28285, 0.5' High, Lat: 39.652878°, Long: 104.641169°  
1992 Alum. Cap, #22573, 0.5' High, Lat: 39.652850°, Long: 104.631811°  
Alum. Cap, 0.9' High, Lat: 39.652825°, Long: 104.622450°

**T5S**  
1998 Alum. Cap, #17488, 0.3' High, Lat: 39.660189°, Long: 104.659814°  
1990 Alum. Cap, #22573, 0.3' Below Ground, Lat: 39.660158°, Long: 104.650436°  
Axle, Flush W/ Ground, Lat: 39.660131°, Long: 104.641061°  
1991 Alum. Cap, #22573, 0.4' High, Lat: 39.660100°, Long: 104.631700°

LINE TABLE		
LINE	DIRECTION	LENGTH
L1	N41°52'29"W	420.72'
L2	N89°45'31"W	135.01'

**LEGEND:**  
= 90° SYMBOL  
● = PROPOSED WELLHEAD.  
◇ = PRODUCTION INTERVAL.  
○ = TARGET BOTTOM HOLE.  
▲ = SECTION CORNERS LOCATED. (NAD 83)

NAD 83 (SURFACE LOCATION)	NAD 83 (BEG. PROD. INTERVAL)	NAD 83 (ENDING PROD. INTERVAL)	NAD 83 (TARGET BOTTOM HOLE)
LATITUDE = 39°39'50.39" (39.663997) LONGITUDE = 104°37'28.52" (104.624589)	LATITUDE = 39°39'53.48" (39.664856) LONGITUDE = 104°37'32.12" (104.625589)	LATITUDE = 39°39'53.80" (39.664944) LONGITUDE = 104°39'18.66" (104.655183)	LATITUDE = 39°39'53.80" (39.664944) LONGITUDE = 104°39'20.39" (104.655664)
NAD 27 (SURFACE LOCATION)	NAD 27 (BEG. PROD. INTERVAL)	NAD 27 (ENDING PROD. INTERVAL)	NAD 27 (TARGET BOTTOM HOLE)
LATITUDE = 39°39'50.44" (39.664011) LONGITUDE = 104°37'26.63" (104.624064)	LATITUDE = 39°39'53.53" (39.664869) LONGITUDE = 104°37'30.23" (104.625064)	LATITUDE = 39°39'53.84" (39.664956) LONGITUDE = 104°39'16.78" (104.654661)	LATITUDE = 39°39'53.85" (39.664958) LONGITUDE = 104°39'18.50" (104.655139)
STATE PLANE NAD 83 (CO. CENTRAL)	STATE PLANE NAD 83 (CO. CENTRAL)	STATE PLANE NAD 83 (CO. CENTRAL)	STATE PLANE NAD 83 (CO. CENTRAL)
N: 1667927.08 E: 3246447.96	N: 1668237.15 E: 3246163.78	N: 1668190.44 E: 3237831.59	N: 1668189.53 E: 3237696.62
STATE PLANE NAD 27 (CO. CENTRAL)	STATE PLANE NAD 27 (CO. CENTRAL)	STATE PLANE NAD 27 (CO. CENTRAL)	STATE PLANE NAD 27 (CO. CENTRAL)
N: 667919.81 E: 2246601.80	N: 668229.87 E: 2246317.63	N: 668183.02 E: 2237985.50	N: 668182.10 E: 2237850.53

PDOP = 1.3

CERTIFICATE  
THIS IS TO CERTIFY THAT THE ABOVE PLAT WAS PREPARED FROM FIELD  
NOTES OF ACTUAL SURVEYS MADE BY ME OR UNDER MY SUPERVISION  
AND THAT THE SAME ARE TRUE AND CORRECT TO THE BEST OF MY  
KNOWLEDGE AND BELIEF.

CHAD MEIERS  
REGISTERED LAND SURVEYOR  
REGISTRATION NO. 28285  
STATE OF COLORADO  
2017

REV: 01 02-23-2017 B.L.B. (BPI MOVED)



**UELS, LLC**  
Corporate Office \* 85 South 200 East  
Vernal, UT 84078 \* (435) 789-1017

SURVEYED BY	CHAD MEIERS	02-06-17	SCALE
DRAWN BY	D.COX	02-15-17	1" = 1000'

WELL LOCATION PLAT