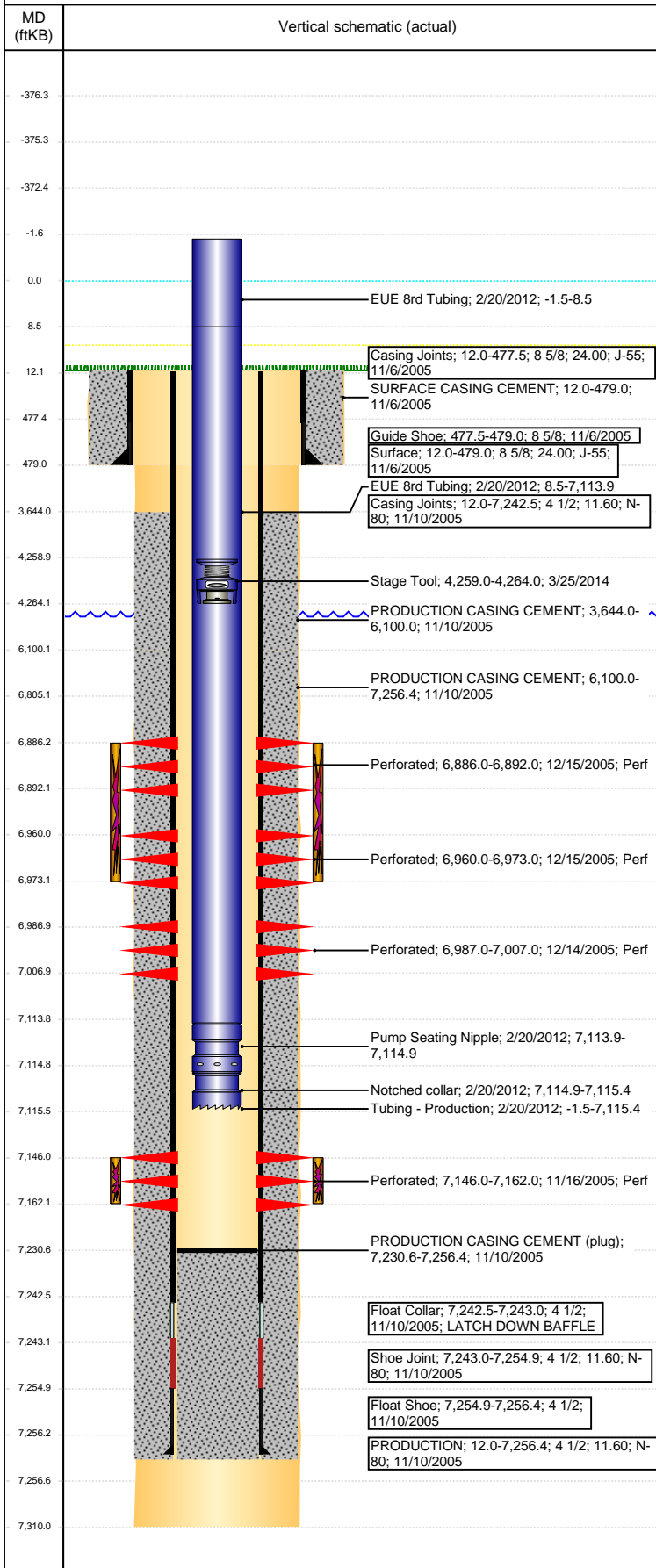


Well Name: LEFFLER I21-06

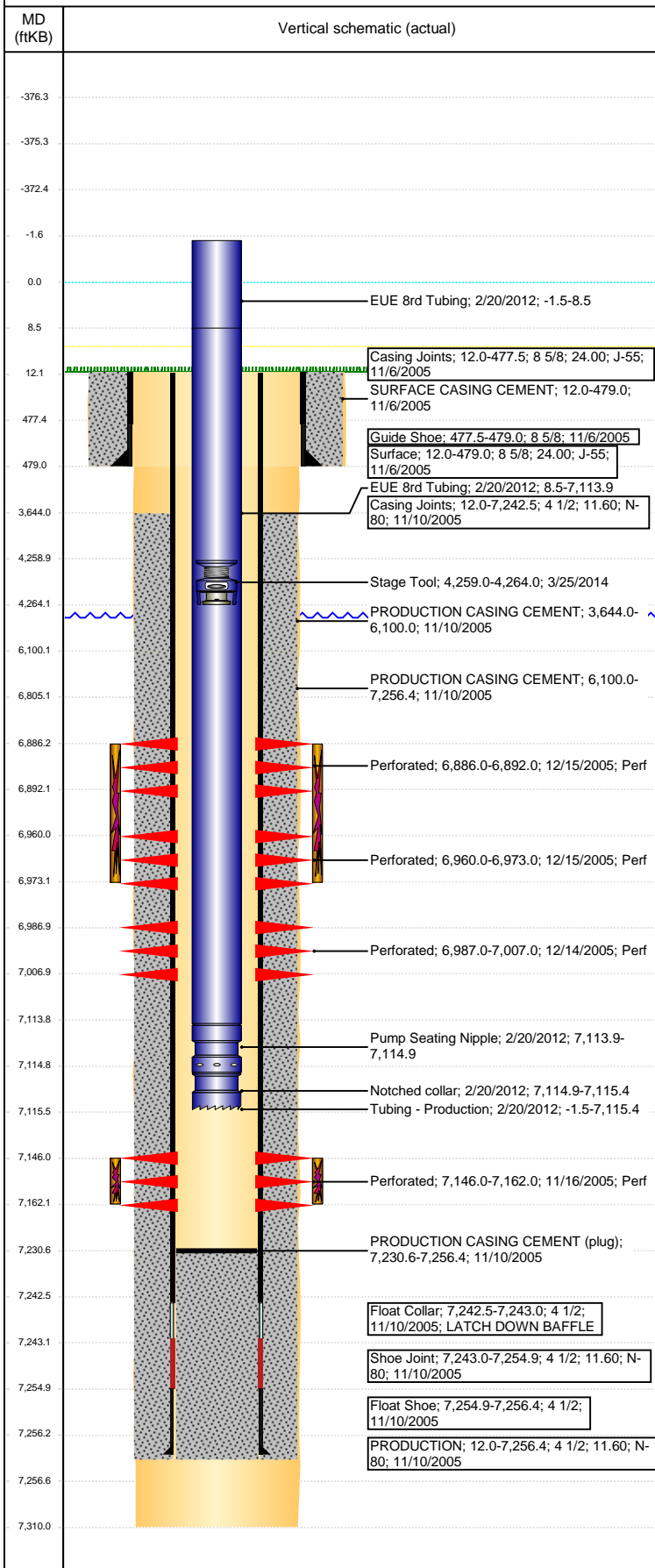
VERTICAL - ORIGINAL HOLE, 4/18/2017 10:17:37 AM



Well Header			
API 05-123-23329	Business Unit DJ BASIN	District 15	Well Config VERTICAL
Original KB Elevation (ft) 4,760	KB - GL / MSL (ftKB) 12.00	Spud Date 11/5/2005	P & A Date
Comment frac'd into Harold 1-21			
Directions To Well HWY 392 AND WCR 29, S 0.5 MILES, E 0.3 MILES, N 0.1 MILE INTO LOCATION			
Congressional Location			
Quarter 3 SE	Quarter 4 NW	Section 21	Township 6
Twntshp N/S Dir N	Range 66	Range E/W Dir W	
Bottom Hole Location			
North-South Distance (ft)	From N or S Line	East-West Distance (ft)	From E or W Line
Plug Back Total Depths			
Date	Depth (ftKB)	Method	Com
11/10/2005	7,230.6	CASING TALLY	GUIDE SHOE. PBTD IS 11.35' HIGHER THAN PRE...
11/16/2005	7,184.0	CASED HOLE LOG	DEPTH LOGGER
1/31/2012	7,230.6	TBG TALLY	222JTS TBG
Wellbore Sections			
Section Des	Size (in)	Act Top, MD (ftKB)	Act Btm, MD (ftKB)
SURFACE	12 1/4	12	479
PRODUCTION	7 7/8	479	7,310
Zone Statuses			
Zone Name	Status Date	Status	Fluid Type
CODELL	12/23/2005	PR	DRILLING/CO...
CODELL	3/26/2012	PR	RE-FRAC, 1/26...
NIOBRARA	12/23/2005	PR	DRILLING/CO...
Casing Strings			
Surface, 479.0ftKB			
Casing Description	Run Date	OD (in)	Wt/Len (l...)
Surface	11/6/2005	8 5/8	24.00
PRODUCTION, 7,256.4ftKB			
Casing Description	Run Date	OD (in)	Wt/Len (l...)
PRODUCTION	11/10/2005	4 1/2	11.60
Cement			
Description	Top Depth (ftKB)	Bottom Depth (ftKB)	
SURFACE CASING CEMENT	12.0	479.0	
PRODUCTION CASING CEMENT	3,644.0	6,100.0	
PRODUCTION CASING CEMENT	6,100.0	7,256.4	
Tubing Strings			
Tubing Description	Run Date	String...	ID (in)
Tubing	1/10/2006	2 3/8	2.00
Tubing Components			
Item Des	OD (in)	Wt (lb/ft)	Grade
EUE 8rd Tubing	2 3/8	4.70	J-55
EUE 8rd Tubing	2 3/8	4.70	J-55
Pump Seating Nipple	2 3/8	4.70	J-55
Notched collar	2 3/8	4.70	J-55
Other In Hole			
Run Date	Des	OD (in)	Top (ftKB)
3/25/2014	Stage Tool	2	4,259.0
Logs			
Date	Type	Top, MD (ftKB)	Btm, MD (ftKB)
11/10/2005	COMPENSATED DENSITY	3,000.0	7,254.0
11/10/2005	INDUCTION	476.0	7,274.0
11/16/2005	CBL/CCL/GR	3,500.0	7,181.0

Well Name: LEFFLER I21-06

VERTICAL - ORIGINAL HOLE, 4/18/2017 10:17:40 AM



Perforation Data					
Linked Zone	Bnch/St g	Sum of Entered Shot Total	Top (ftKB)	Btm (ftKB)	Date
NIOBRARA, ORIGINAL HOLE		36	6,886.00	6,892.00	12/15/2005
NIOBRARA, ORIGINAL HOLE		78	6,960.00	6,973.00	12/15/2005
NIOBRARA, ORIGINAL HOLE		120	6,987.00	7,007.00	12/14/2005
CODELL, ORIGINAL HOLE		64	7,146.00	7,162.00	11/16/2005
Total (Sum)		298			
Stimulation Intervals					
Start Date 12/12/2005		Primary Job Type DRILLING/COMPLETION - ORIGINAL			
Technical Result		Tech Result Details		Tech Result Note	
Comment					
Start Date 2/11/2012		Primary Job Type DRILLING/COMPLETION - ORIGINAL			
Technical Result Success		Tech Result Details According to Plan		Tech Result Note	
Comment (COD RF):5 MIN SIP 2903 : JOB WENT AS PLANNED					
Start Date 12/21/2005		Primary Job Type DRILLING/COMPLETION - ORIGINAL			
Technical Result		Tech Result Details		Tech Result Note	
Comment					
Start Date 2/11/2012		Primary Job Type DRILLING/COMPLETION - ORIGINAL			
Technical Result		Tech Result Details		Tech Result Note	
Comment (COD RF):5 MIN SIP 2903 : JOB WENT AS PLANNED					