






In accordance with a request from Barney Hammond of PDC Energy, Inc., Washburn Land Surveying, LLC has determined the location of the **HIGH PLAINS 25N-301** well site to be SHL: 1114' FNL and 747' FWL, (BHL: 0' FNL and 2614' FWL), as measured at ninety (90) degrees from the section lines of Sections 24 and 25, Township 5 North, Range 65 West of the 6th Principal Meridian, Weld County Colorado.

### LEGEND

-  - Found Survey Monument  
 - Calculated Location  
 - Surface Hole Location (SHL)  
 - Entry Point Location (EPL)  
 - Bottom Hole Location (BHL)

I hereby certify that this Well Location Certificate was prepared by me or under my direct supervision on 2/16/2017 for and on behalf of PDC Energy, Inc. That it is not a Land Survey Plat or an Improvement Survey Plat and that it is not to be relied upon for establishment of fences, buildings, or other future improvement lines.

John Robert McGehee LS#38219  
Well: HIGH PLAINS 25N-301

SHEET 1 OF 2

Notes:

- 1) Bearings and distances based on NAD 83 Colorado North State Plane Coordinate.
- 2) using RTK GPS observations taken 10/3/16 by operator Jason Dahلمان.
- 3) Conversion factor to ground (1.0002577355).
- 4) Elevations based on NAVD 88 GPS heights and Geoid 2009 corrections.
- 5) See Location Drawing for visible improvements within 500 feet of Pad Site.
- 6) The surface use is an uncultivated field.

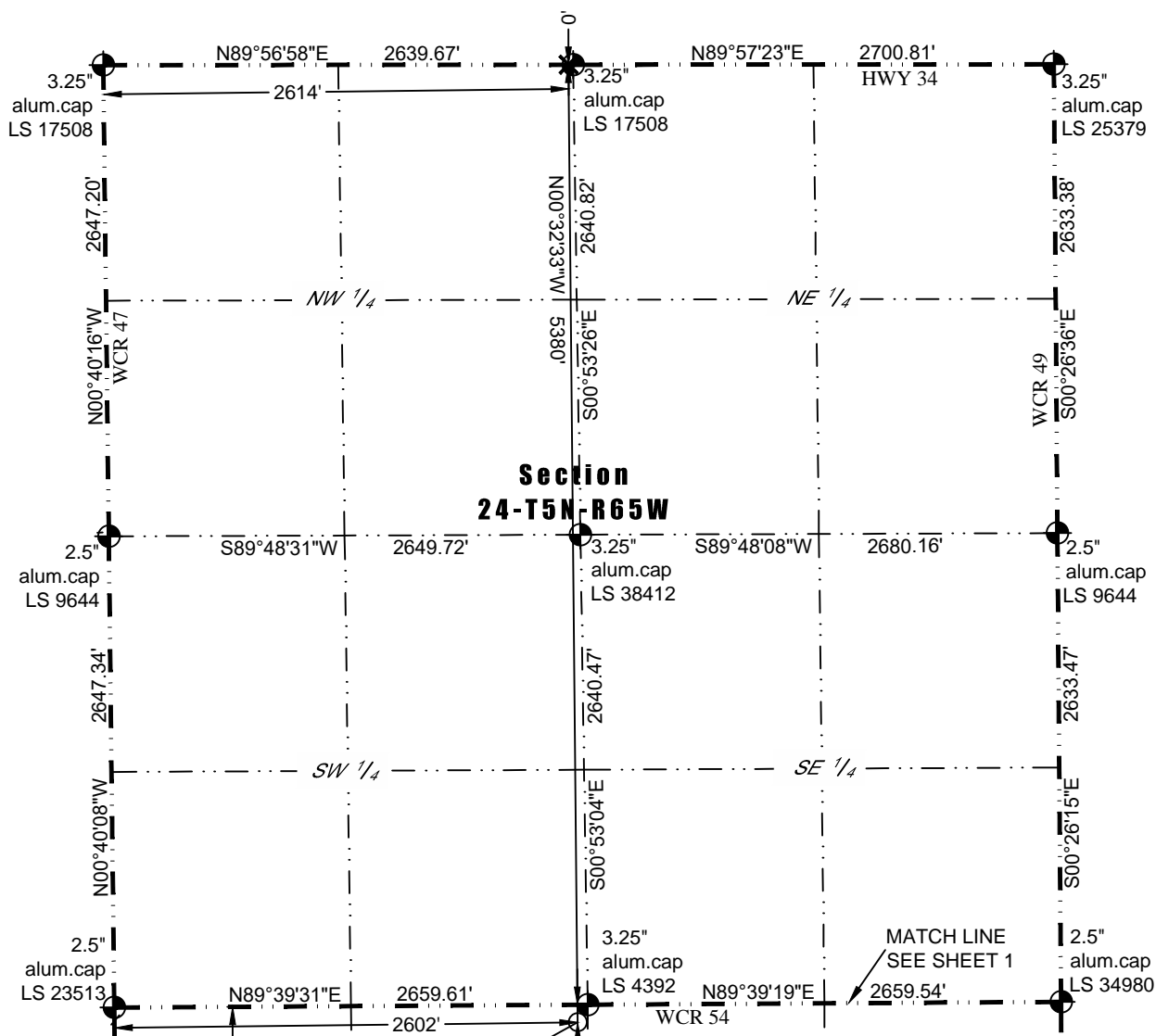
**NOTICE:** According to Colorado law you must commence any legal action based upon any defect in this W.L.C. within three years after you first discover such defect. In no event may any action based upon any defect in this W.L.C. be commenced more than ten years from this said date of the certification shown hereon.



# WELL LOCATION CERTIFICATE

THIS MAP DOES NOT REPRESENT A BOUNDARY SURVEY

Washburn Land Surveying  
www.WashburnSurveying.com  
970-232-9645



- LEGEND**
- Found Survey Monument
  - Calculated Location
  - Surface Hole Location (SHL)
  - Entry Point Location (EPL)
  - Bottom Hole Location (BHL)

