

HALLIBURTON

iCem[®] Service

EXTRACTION OIL & GAS

Date: Monday, December 12, 2016

Mickey #6 Surface

Job Date: Thursday, December 01, 2016

Sincerely,

Julia Nichols

Legal Notice

Disclaimer:

All information in this report is provided subject to the terms and conditions which govern the services provided by Halliburton. Halliburton personnel use their best efforts in gathering information and their best judgment in interpreting it, but any interpretation, research, analysis or recommendation furnished by Halliburton are opinions based upon inferences from measurements and empirical relationships and assumptions, which inferences and empirical relationships and assumptions are not infallible, and with respect to which professionals in the industry may differ. Accordingly, HALLIBURTON IS UNABLE TO GUARANTEE THE ACCURACY OF ANY CHART INTERPRETATION, RESEARCH ANALYSIS, OR JOB RECOMMENDATION and any interpretation or recommendation is not for use of or reliance upon by any third party. The customer has full responsibility for any of its decisions which are based on the information provided in this report.

Table of Contents

1.0 Cementing Job Summary 4

 1.1 Executive Summary4

2.0 Real-Time Job Summary 7

 2.1 Job Event Log7

3.0 Attachments..... 8

 3.1 Custom Results – Job Chart with Events8

 3.2 Custom Results – Job Chart without Events.....9

1.0 Cementing Job Summary

1.1 Executive Summary

Halliburton appreciates the opportunity to perform the cementing services on the **Mickey #6** cement **Surface** casing job. A pre-job safety meeting was held before the job where details of the job were discussed, potential safety hazards were reviewed, and environmental compliance procedures were outlined.

No cement was returned to surface.

Halliburton maintains a continuous quality improvement process and appreciates any comments or suggestions that you may have. Halliburton again thanks you for the opportunity to perform service work on this well. We hope to be your solutions provider for future projects.

Respectfully,

Halliburton [Ft. Lupton]

HALLIBURTON

Cementing Job Summary

The Road to Excellence Starts with Safety

Sold To #: 369404	Ship To #: 3766596	Quote #:	Sales Order #: 0903690308
Customer: EXTRACTION OIL & GAS -		Customer Rep: Sean McIntyre	
Well Name: MICKEY	Well #: 6	API/UWI #: 05-123-43849-00	
Field: WATTENBERG	City (SAP): WINDSOR	County/Parish: WELD	State: COLORADO
Legal Description: SW NE-5-6N-67W-2420FNL-1843FEL			
Contractor:		Rig/Platform Name/Num: Spud Rig	
Job BOM: 7521			
Well Type: HORIZONTAL OIL			
Sales Person: HALAMERICA\HX38199		Srvc Supervisor: Jacob Ayers	
Job			
Formation Name			
Formation Depth (MD)	Top	Bottom	
Form Type		BHST	
Job depth MD	987ft	Job Depth TVD	
Water Depth		Wk Ht Above Floor	
Perforation Depth (MD)	From	To	
Well Data			
Description	New / Used	Size in	ID in
Casing		9.625	8.921
Open Hole Section			13.5
Tools and Accessories			
Type	Size in	Qty	Make
Guide Shoe	9.625		987
Float Shoe	9.625		
Float Collar	9.625		
Insert Float	9.625		
Stage Tool	9.625		
Fluid Data			
Stage/Plug #: 1			
Fluid #	Stage Type	Fluid Name	Qty
1	Red Dye Spacer	Red Dye Spacer	20
Fluid #			
2	SwiftCem	SWIFTCCEM (TM) SYSTEM	750
9.17 Gal		FRESH WATER	

last updated on 12/12/2016 2:37:06 PM

Page 1 of 2

HALLIBURTON

Cementing Job Summary

Fluid #	Stage Type	Fluid Name	Qty	Qty UoM	Mixing Density lbm/gal	Yield ft3/sack	Mix Fluid Gal	Rate bbl/min	Total Mix Fluid Gal	
3	Fresh Water	Fresh Water	76	bbl	8.33					
Cement Left In Pipe		Amount	42 ft		Reason			Shoe Joint		
Mix Water:		pH 6.5	Mix Water Chloride:			<54ppm		Mix Water Temperature:		65°F °C
		Sulfates:	<200	Cement Returns:			0 bbl			
Comment										

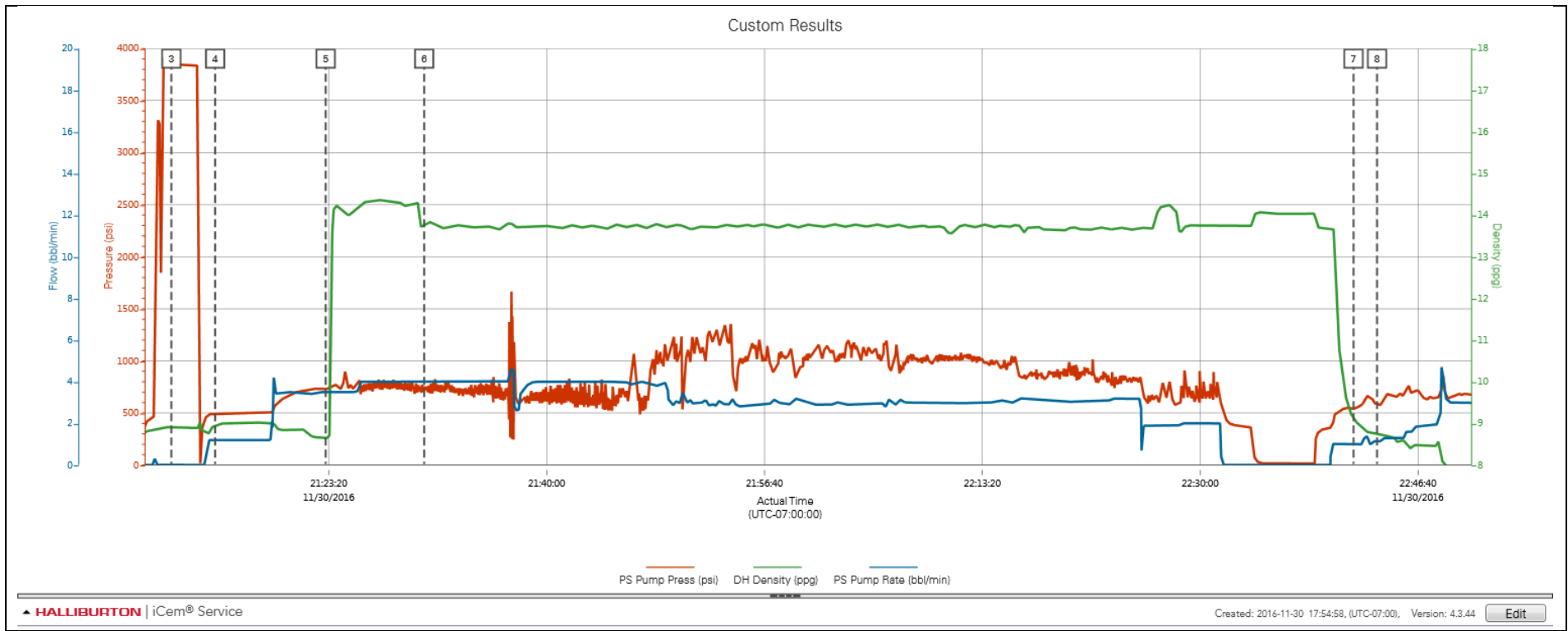
2.0 Real-Time Job Summary

2.1 Job Event Log

Type	Seq. No.	Activity	Graph Label	Date	Time	Source	PS Pump Press (psi)	DH Density (ppg)	PS Pump Rate (bbl/min)	Comments
Event	1	Arrive at Location from Service Center	Arrive at Location from Service Center	11/29/2016	13:00:00	USER				arrived on location @ 1300 11/29/16
Event	2	Other	Other	11/30/2016	17:00:00	USER				oh-13.5" casing 9 5/8 36# perfs @987 bridge plug @990
Event	3	Other	Other	11/30/2016	17:30:00	USER				
Event	4	Start Job	Start Job	12/1/2016	20:39:02	COM5				
Event	5	Pressure Test	Pressure Test	12/1/2016	21:11:17	USER	3849.00	8.91	0.00	test pumps and lines to 4000psi
Event	6	Pump Spacer	Pump Spacer	12/1/2016	21:14:38	USER	496.00	8.93	1.20	20 bbl dyed water
Event	7	Pump Cement	Pump Cement	12/1/2016	21:23:06	USER	718.00	8.65	3.50	750 sks @13.5# 1.74yield 9.2 232.42bbl cmt
Event	8	Check Weight	Check Weight	12/1/2016	21:30:38	USER	775.00	13.77	4.00	
Event	9	Drop Plug	Drop Plug	12/1/2016	22:41:44	USER	534.00	9.12	1.00	shut down drop plug
Event	10	Pump Displacement	Pump Displacement	12/1/2016	22:43:32	USER	598.00	8.74	1.10	calculated displacement to perfs 77.3bbl
Event	11	Cement Returns to Surface	Cement Returns to Surface	12/1/2016	23:25:08	USER				calculated cmt back to surface at 146.6 bbl away no cmt returned lost returns @ 84bbl gone on cmt

3.0 Attachments

3.1 Custom Results – Job Chart with Events



3.2 Custom Results – Job Chart without Events

