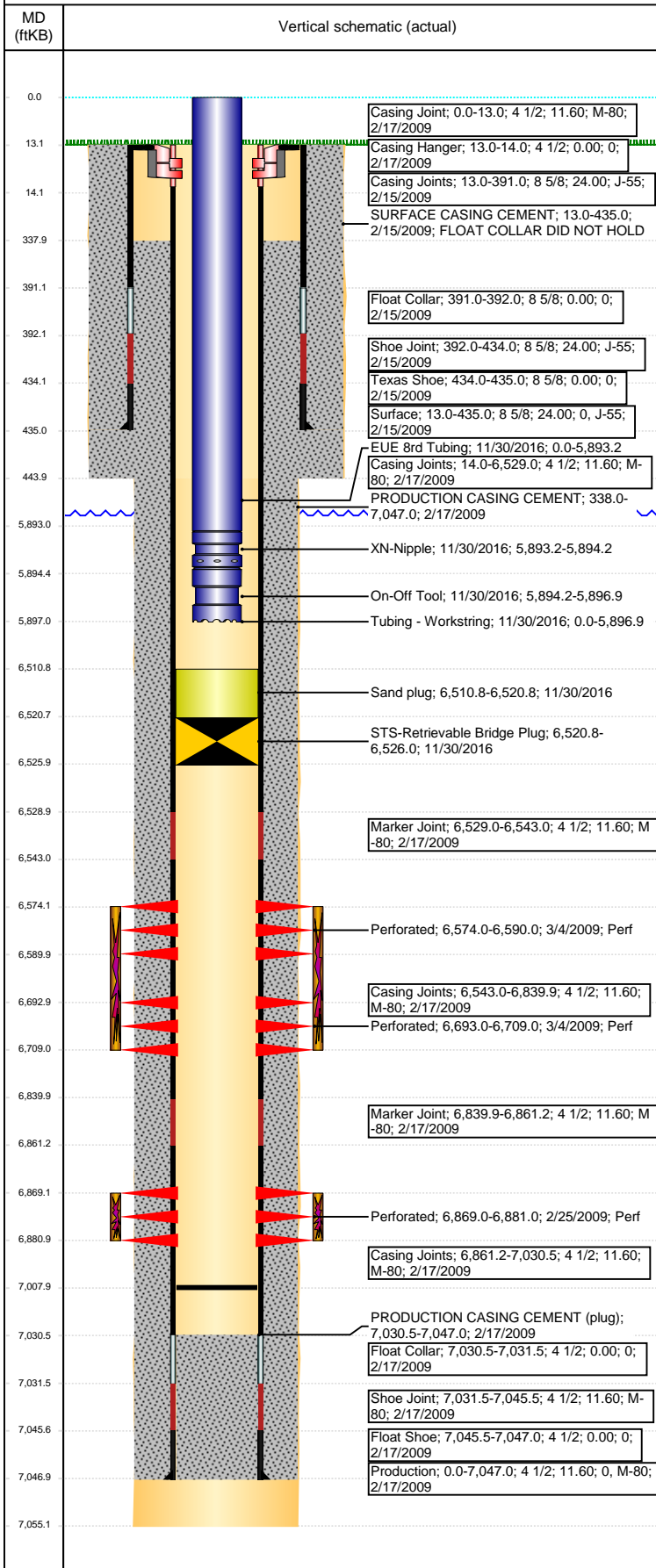


Well Name: PUYPE B18-17

VERTICAL - ORIGINAL HOLE, 4/12/2017 2:25:29 PM



Well Header

API 05-123-29600	Business Unit DJ BASIN	District 15	Well Config VERTICAL
Original KB Elevation (ft) 4,634	KB - GL / MSL (ftKB) 13.00	Spud Date 2/14/2009	P & A Date

Comment

Directions To Well

WCR 58 & WCR 51, WEST 1/4 MILE, SOUTH 1/4 MILE TO LOCATION.

Congressional Location

Quarter 3	Quarter 4 NE	Section 18	Township 5	Twnshp N/S Dir N	Range 64	Range E/W Dir W
-----------	-----------------	---------------	---------------	---------------------	-------------	--------------------

Bottom Hole Location

North-South Distance (ft)	From N or S Line	East-West Distance (ft)	From E or W Line
---------------------------	------------------	-------------------------	------------------

Plug Back Total Depths

Date	Depth (ftKB)	Method	Com
2/17/2009	7,031.5	CASING TALLY	
12/1/2009	7,025.8	TAG	
11/30/2016	7,008.0	TBG TAG	

Wellbore Sections

Section Des	Size (in)	Act Top, MD (ftKB)	Act Btm, MD (ftKB)
SURFACE	12 1/4	13	444
PRODUCTION	7 7/8	444	7,055

Zone Statuses

Zone Name	Status Date	Status	Fluid Type	Job	Prod Method
NIOBRARA	3/16/2009	PR	Water	DRILLING/CO...	Flowing
NIOBRARA	2/2/2010	PR		HORIZONTAL...	
NIOBRARA	11/29/2016	TA		DRILLING/CO...	
CODELL	3/16/2009	PR	Water	HORIZONTAL...	Flowing
CODELL	2/2/2010	PR			
CODELL	11/29/2016	TA			

Casing Strings

Surface, 435.0ftKB

Casing Description	Run Date	OD (in)	Wt/Len (l...)	Grade	Top, MD (ft...)	MD (ftKB)
Surface	2/15/2009	8 5/8	24.00	J-55	13.0	435.0

Production, 7,047.0ftKB

Casing Description	Run Date	OD (in)	Wt/Len (l...)	Grade	Top, MD (ft...)	MD (ftKB)
Production	2/17/2009	4 1/2	11.60	M-80	0.0	7,047.0

Cement

Description	Top Depth (ftKB)	Bottom Depth (ftKB)
SURFACE CASING CEMENT	13.0	435.0
PRODUCTION CASING CEMENT	338.0	7,047.0

Tubing Strings

Tubing Description	Run Date	String...	ID (in)	Wt (lb/ft)	Grade	Len (ft)	Set De...
Tubing - Production	12/2/2009	2 3/8	2.00	4.70	J-55	6,829.80	6,842.0
Tubing - Workstring	11/30/2016	2 3/8	2.00	4.70	J-55	5,896.92	5,896.3

Tubing Components

Item Des	OD (in)	Wt (lb/ft)	Grade	Jts	Len (ft)	Btm (ftKB)	Btm (TVD) (ftKB)
EUE 8rd Tubing	2 3/8	4.70	J-55	189	5,893.17	5,893.2	
XN-Nipple	2 3/8	4.70	N-80	1	1.05	5,894.2	5,893.6
On-Off Tool	2 3/8	4.70	N-80	1	2.70	5,896.9	5,896.3

Other In Hole

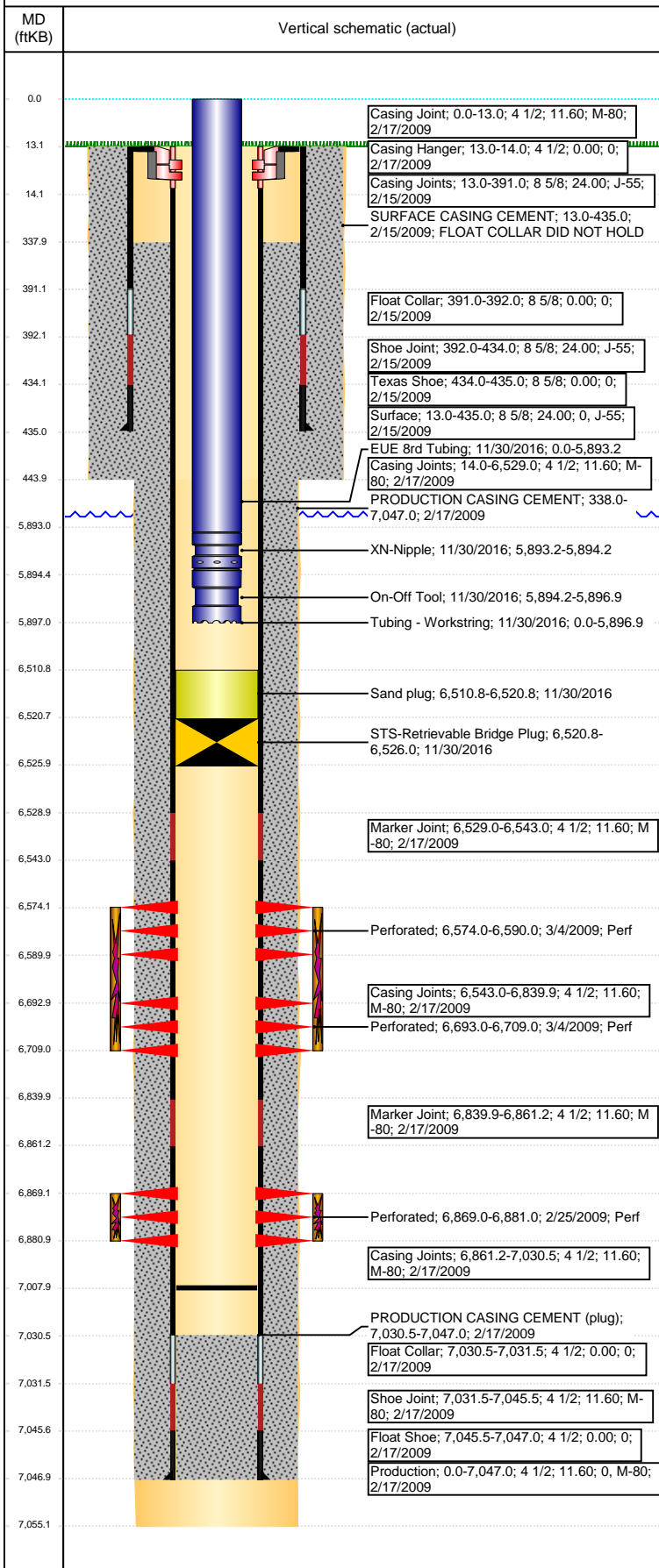
Run Date	Des	OD (in)	Top (ftKB)	Btm (ftKB)
11/30/2016	STS-Retrieveable Bridge Plug	4	6,520.8	6,526.0
11/30/2016	Sand plug	4	6,510.8	6,520.8

Logs

Date	Type	Top, MD (ftKB)	Btm, MD (ftKB)
2/17/2009	Caliper/Comp. Density/Neutron/GR/SP/ML	2,440.0	7,059.0
2/17/2009	DIL/GR/SP/Caliper	434.0	7,059.0
2/24/2009	CBL/CCL/GR	28.0	6,992.0
12/4/2015	GYRO	0.0	6,750.0

Well Name: PUYPE B18-17

VERTICAL - ORIGINAL HOLE, 4/12/2017 2:25:31 PM



Perforation Data

Linked Zone	Bnch/St g	Sum of Entered Shot Total	Top (ftKB)	Btm (ftKB)	Date
NIOBRARA, ORIGINAL HOLE	A	32	6,574.00	6,590.00	3/4/2009
NIOBRARA, ORIGINAL HOLE	B	32	6,693.00	6,709.00	3/4/2009
CODELL, ORIGINAL HOLE	01	48	6,869.00	6,881.00	2/25/2009
Total (Sum)		112			

Stimulation Intervals

Start Date 3/4/2009	Primary Job Type DRILLING/COMPLETION - ORIGINAL	
Technical Result Success	Tech Result Details According to Plan	Tech Result Note
Comment (CODELL): REVERSE STEP RATE RESULTS PO 12 NWB 391 PSI WB 266 PSI PPF 234 PSI FOR A TOTAL OF 891 PSI OF FRICTION TREATMENT WENT WELL AVG VISC 28.5 CPS AVG TEMP 70.3F AVG PH 10.16 POST JOB 5 MINUTE OF 3359 PSI		
Start Date 3/4/2009	Primary Job Type DRILLING/COMPLETION - ORIGINAL	
Technical Result Success	Tech Result Details According to Plan	Tech Result Note
Comment (NIOBRARA): RAN HYBRID JOB WITH SWEEPS TREATMENT WENT WELL AVG VISC 24.9 CPS AVG TEMP 72.8 AVG PH 10.14 POST JOB 5 MINUTE OF 2618 PSI		