

# NOBLE ENERGY INC.

Puype B18-17  
NENE 18-5N-64W  
1300 FNL & 1300 FEL  
WELD COUNTY, CO

Wattenberg  
CURRENT WELLBORE SCHEMATIC  
with PROPOSED P&A  
3/27/2017

LEGEND	
Existing Cement	
New Cement	
CICR	
CIBP	
Existing BP	
Sand Plug	

API: 05-123-29600  
COGCC #

GL Elev: 4621  
KB Elev: 4634

Spud Date: 2/14/2009

Surface Casing :  
8-5/8" 24# J-55 @ 435'  
Cement: 285 sx  
TOC: Surface

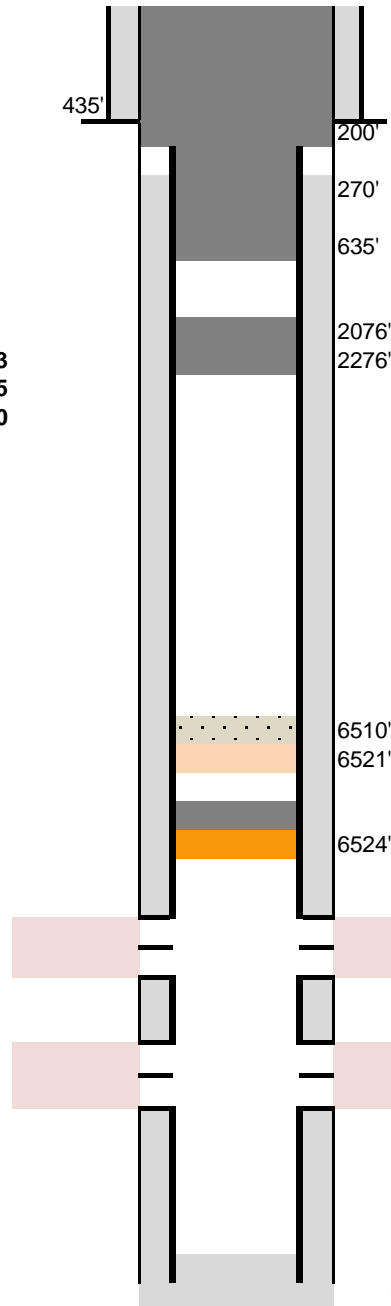
WW 103 303  
SC 435 635  
FH 260 460

No Sussex within 1 mile

TOC @ 270'

Nio Log Top: 6573'

Production Casing :  
4-1/2" 11.6# M-80 @ 7,047'  
Cement: 930 sx  
TD: 2/17/2009



Cut surface casing off 6'-8' below surface.

Cement to surface with 100 sx @ 635'  
Cut casing @ 200'

Pump 15 sx as a balanced plug  
TOC: 2076' in pipe

Wash sand off existing RBP  
Release existing RBP and POOH

TOC: 6554' in pipe  
Set CIBP @ 6,524" w/ 2 sx on top

Niobrara Perforations: 6,574'-6,709'

Codell Perforations: 6,869'-6,881'

TD: 7055