

HALLIBURTON

iCem[®] Service

EXTRACTION OIL & GAS

United States of America, COLORADO

Mickey 8

9.625 SURFACE CASING

Job Date: Friday, December 02, 2016

Sincerely,

Derek Trier

Legal Notice

Disclaimer:

All information in this report is provided subject to the terms and conditions which govern the services provided by Halliburton. Halliburton personnel use their best efforts in gathering information and their best judgment in interpreting it, but any interpretation, research, analysis or recommendation furnished by Halliburton are opinions based upon inferences from measurements and empirical relationships and assumptions, which inferences and empirical relationships and assumptions are not infallible, and with respect to which professionals in the industry may differ. Accordingly, HALLIBURTON IS UNABLE TO GUARANTEE THE ACCURACY OF ANY CHART INTERPRETATION, RESEARCH ANALYSIS, OR JOB RECOMMENDATION and any interpretation or recommendation is not for use of or reliance upon by any third party. The customer has full responsibility for any of its decisions which are based on the information provided in this report.

Table of Contents

1.0 Cementing Job Summary 4

 1.1 Executive Summary4

2.0 Real-Time Job Summary 7

 2.1 Job Event Log7

3.0 Attachments..... 9

 3.1 9.625 SURFACE CASING-Custom Results.png.....9

4.0 Custom Graphs..... 10

 4.1 Custom Graph.....10

1.0 Cementing Job Summary

1.1 Executive Summary

Halliburton appreciates the opportunity to perform the cementing services on the **Mickey 8** cement **Surface** casing job. A pre-job safety meeting was held before the job where details of the job were discussed, potential safety hazards were reviewed, and environmental compliance procedures were outlined.

Approximately, 35bbl of Cement returned to surface

Halliburton maintains a continuous quality improvement process and appreciates any comments or suggestions that you may have. Halliburton again thanks you for the opportunity to perform service work on this well. We hope to be your solutions provider for future projects.

Respectfully,

Halliburton [Ft. Lupton]

Sold To #: 369404		Ship To #: 3766597		Quote #:		Sales Order #: 0903690309					
Customer: EXTRACTION OIL & GAS -				Customer Rep:							
Well Name: MICKEY			Well #: 8		API/UWI #: 05-123-43856-00						
Field: WATTENBERG		City (SAP): WINDSOR		County/Parish: WELD		State: COLORADO					
Legal Description: SW NE-5-6N-67W-2421FNL-1873FEL											
Contractor:				Rig/Platform Name/Num: Spud Rig							
Job BOM: 7521											
Well Type: HORIZONTAL OIL											
Sales Person: HALAMERICA\HX38199				Srv Supervisor: John Keane							
Job											
Formation Name											
Formation Depth (MD)		Top		Bottom							
Form Type				BHST							
Job depth MD		1555ft		Job Depth TVD		1555 FT					
Water Depth				Wk Ht Above Floor		5 FT					
Perforation Depth (MD)		From		To							
Well Data											
Description	New / Used	Size in	ID in	Weight lbm/ft	Thread	Grade	Top MD ft	Bottom MD ft	Top TVD ft	Bottom TVD ft	
Casing	3	9.625	8.921	36	8 RD	J-55	0	1555	0	1555	
Open Hole Section			13.5				0	1588	0	1588	
Tools and Accessories											
Type	Size in	Qty	Make	Depth ft		Type	Size in	Qty	Make		
Guide Shoe	9.625					Top Plug	9.625	1	HES		
Float Shoe	9.625	1		1555 FT		Bottom Plug					
Float Collar	9.625	1		1512 FT		SSR plug set					
Insert Float	9.625					Plug Container	9.625	1	HES		
Stage Tool	9.625					Centralizers					
Fluid Data											
Stage/Plug #: 1											
Fluid #	Stage Type	Fluid Name			Qty	Qty UoM	Mixing Density lbm/gal	Yield ft3/sack	Mix Fluid Gal	Rate bbl/min	Total Mix Fluid Gal
1	Red Dye Spacer	Red Dye Spacer			20	bbl	8.33				

Fluid #	Stage Type	Fluid Name	Qty	Qty UoM	Mixing Density lbm/gal	Yield ft ³ /sack	Mix Fluid Gal	Rate bbl/min	Total Mix Fluid Gal
2	SwiftCem	SWIFTCEM (TM) SYSTEM	550	sack	13.5	1.74		5	9.2
9.20 Gal		FRESH WATER							
Fluid #	Stage Type	Fluid Name	Qty	Qty UoM	Mixing Density lbm/gal	Yield ft ³ /sack	Mix Fluid Gal	Rate bbl/min	Total Mix Fluid Gal
3	Fresh Water	Fresh Water	1169	bbl	8.33				
Cement Left In Pipe		Amount	43 ft		Reason			Shoe Joint	
Mix Water:		pH 7.5	Mix Water Chloride:		0 ppm		Mix Water Temperature:		42°F °C
Cement Temperature:			Plug Displaced by:		8.33 lb/gal		Disp. Temperature:		
Plug Bumped?		Yes	Bump Pressure:		516 psi		Floats Held?		Yes
Cement Returns:		35 bbl	Returns Density:				Returns Temperature:		
Comment 35bbl returned to surface.									

2.0 Real-Time Job Summary

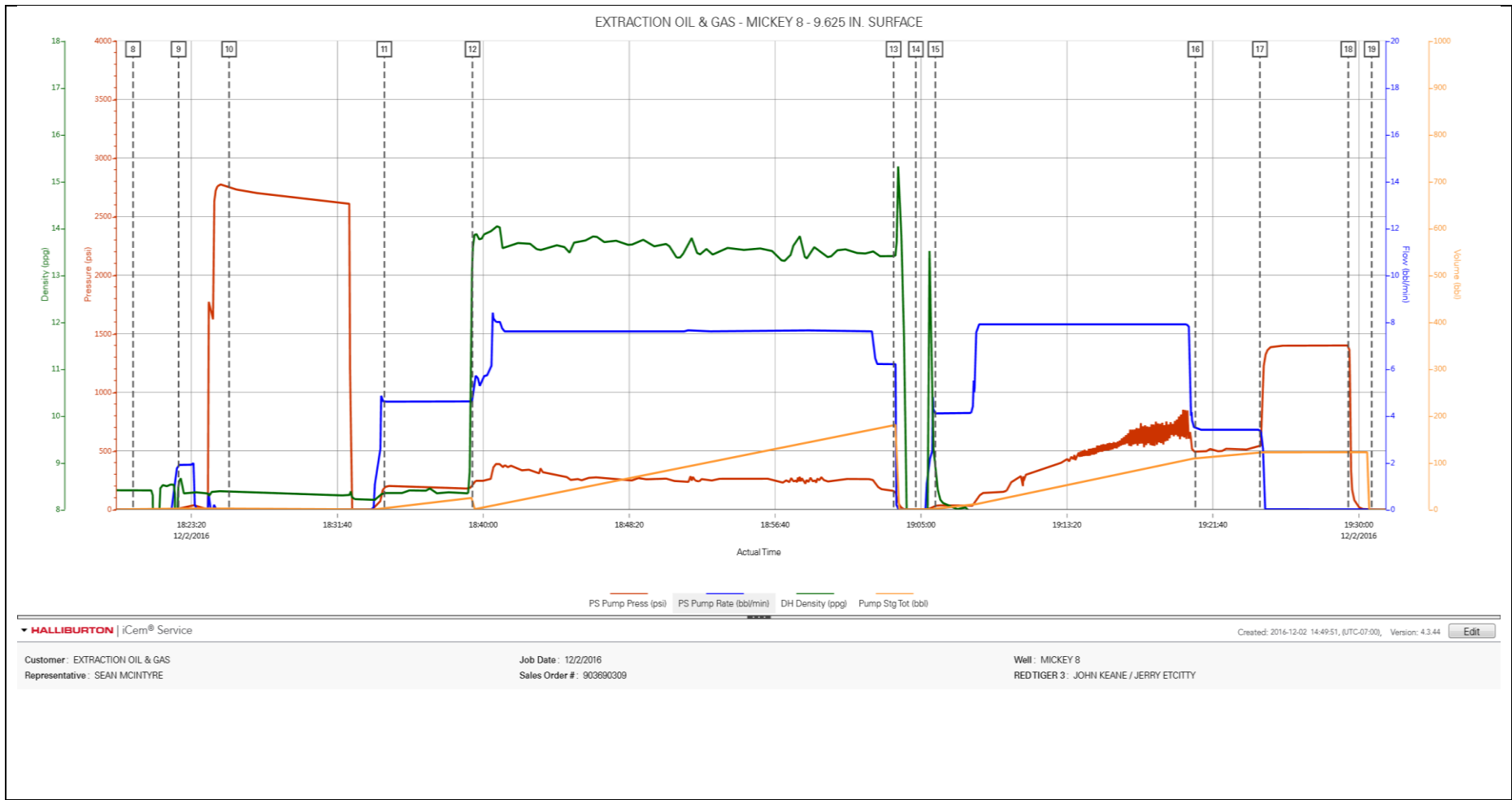
2.1 Job Event Log

Type	Seq. No.	Activity	Graph Label	Date	Time	Source	PS Pump Press (psi)	PS Pump Rate (bbl/min)	DH Density (ppg)	Pump Stg Tot (bbl)	Comments
Event	1	Call Out	Call Out	12/2/2016	09:30:00	USER					REQUESTED ON LOCATION TIME 14:00
Event	2	Depart Yard Safety Meeting	Depart Yard Safety Meeting	12/2/2016	11:30:00	USER					WITH HES, 1 F-450, 1 RED TIGER CEMENTING UNIT, 2 660 BULK TRUCKS
Event	3	Arrive At Loc	Arrive At Loc	12/2/2016	12:50:00	USER					RIG RUNNING CASING UPON HES, ARRIVAL
Event	4	Assessment Of Location Safety Meeting	Assessment Of Location Safety Meeting	12/2/2016	14:00:00	USER					WITH HES, DISCUSSED JOB PROCEDURE WITH COMPANY REP, TESTED WATER (CHLOR 0, PH 7.5, TEMP 42 F), SDS OFFERED FOR ALL HES MATERIALS
Event	5	Pre-Rig Up Safety Meeting	Pre-Rig Up Safety Meeting	12/2/2016	15:10:00	USER					WITH HES
Event	6	Rig-Up Equipment	Rig-Up Equipment	12/2/2016	15:20:00	USER					1 LINE RAN TO THE FLOOR, 1 9.625 IN QUICK-LATCH PLUG CONTAINER
Event	7	Pre-Job Safety Meeting	Pre-Job Safety Meeting	12/3/2016	18:15:00	USER					WITH HES, EXTRACTION, AND RIG CREW
Event	8	Start Job	Start Job	12/3/2016	18:20:00	USER					TD 1588 FT, TP 1555 FT, CSG 9.625 IN 36 LB/FT J-55, HOLE 13.5 IN, SHOE 43 FT, MWT 8.7 LB/GAL WBM
Event	9	Prime Pumps	Fill Lines	12/3/2016	18:22:36	USER	35.00	2.00	8.33	2.00	RETURNS AT 2 BBL AWAY
Event	10	Test Lines	Test Lines	12/3/2016	18:25:29	USER	2747.00	0.00	8.38	2.20	LOW TEST AT 1400 PSI, HIGH TEST AT 2747 PSI, PRESSURE HOLDING
Event	11	Pump Spacer	Pump Fresh Water Spacer	12/3/2016	18:34:21	USER	190.00	4.60	8.33	20.00	RED DYE ADDED, RETURNS AT 1 BBL AWAY
Event	12	Pump Cement	Pump Cement	12/3/2016	18:39:23	USER	243.00	8.00	13.50	170.4	MIXED AT 13.5 LB/GAL, 550 SKS, 1.74 FT3/SK, 9.2 GAL/SK, DENSITY VERIFIED USING PRESSURIZED MUD SCALES
Event	13	Shutdown	Shutdown	12/3/2016	19:03:26	USER	164.00	6.20	13.50	170.4	

Event	14	Drop Top Plug	Drop Top Plug	12/3/2016	19:04:42	USER	-12.00	0.00	-2.43	0.00	PLUG LAUNCHED
Event	15	Pump Displacement	Pump Displacement	12/3/2016	19:05:49	USER	850.00	8.00	8.33	107.00	FRESH WATER, 116.9 BBL DISPLACEMENT
Event	16	Slow Rate	Slow Rate	12/3/2016	19:20:40	USER	498.00	3.50	8.33	10.00	SLOWED AT 107 BBL AWAY
Event	17	Bump Plug	Bump Plug	12/3/2016	19:24:21	USER	516.00	3.40	8.33	116.70	PLUG BUMPED AT CALCULATED DISPLACEMENT, 516 PSI
Event	18	Check Floats	Check Floats	12/3/2016	19:29:24	USER	1401.00	0.00	7.82	122.10	FLOATS HOLDING, 1 BBL RETURNED TO THE TRUCK
Event	20	End Job	End Job	12/3/2016	19:35:00	USER	-12.00	0.00	-0.57	0.00	GOOD CIRCULATION, PIPE WAS STATIC, 35 BBL CEMENT CIRCULATED TO SURFACE, NO ADD HOURS, RIG DID NOT USE SUGAR, 1 9.625 IN QUICK-LATCH PLUG CONTAINER LEFT ON LOCATION
Event	21	Pre-Rig Down Safety Meeting	Pre-Rig Down Safety Meeting	12/3/2016	19:45:00	USER	-13.00	12.10	-0.50	40.80	WITH HES
Event	22	Rig Down Lines	Rig Down Lines	12/3/2016	19:55:00	USER					
Event	23	Pre-Convoy Safety Meeting	Pre-Convoy Safety Meeting	12/3/2016	20:40:00	USER					WITH HES
Event	24	Crew Leave Location	Crew Leave Location	12/3/2016	20:50:00	USER					THANKS FOR USING HALLIBURTON, JOHN KEANE AND CREW

3.0 Attachments

3.1 9.625 SURFACE CASING-Custom Results.png



4.0 Custom Graphs

4.1 Custom Graph

