

- LEGEND:
- = 90° SYMBOL
 - = PROPOSED WELLHEAD.
 - = HEEL.
 - = TARGET BOTTOM HOLE.
 - = SECTION CORNERS LOCATED. (NAD 83)

T11N, R63W, 6th P.M.

1920 Brass Cap,
0.8' High, E-W
Fence
Lat: 40.944097°
Long: 104.485356°

1920 Brass Cap,
0.3' High, E-W
Fence, Steel Post
Lat: 40.944089°
Long: 104.475758°

1921 Brass Cap,
0.5' High
Lat: 40.944078°
Long: 104.466339°

1920 Brass Cap,
0.3' High, E-W
Fence, Steel Post
Lat: 40.936828°
Long: 104.485350°

1921 Brass Cap,
1.0' High
Lat: 40.936822°
Long: 104.466356°

1921 Brass Cap,
1.0' High, E-W
Fenceline, 4' Post
Lat: 40.929558°
Long: 104.485347°

2010 Alum. Cap,
0.3' Below Ground
Lat: 40.929567°
Long: 104.475831°

1921 Brass Cap,
0.2' Below Ground,
SW/NE Fenceline
Lat: 40.929586°
Long: 104.466372°

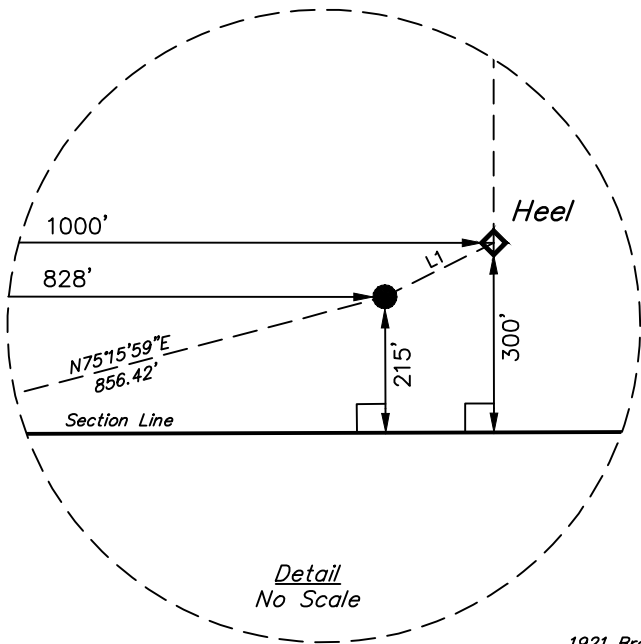
1921 Brass Cap,
0.7' High, T-Post
Lat: 40.922319°
Long: 104.466386°

2009 Alum. Cap,
#17492
Lat: 40.915069°
Long: 104.466408°

1921 Brass Cap,
0.7' Below Ground
Lat: 40.915006°
Long: 104.485339°

CRITTER CREEK #202-1807H
Elev. Ungraded Ground = 5335.9'

LINE TABLE		
LINE	DIRECTION	LENGTH
L1	N63°34'47"E	192.03'



PDOP = 1.4



NAD 83 (SURFACE LOCATION)	NAD 83 (HEEL)	NAD 83 (TARGET BOTTOM HOLE)
LATITUDE = 40°54'56.18" (40.915606)	LATITUDE = 40°54'57.03" (40.915842)	LATITUDE = 40°56'35.78" (40.943272)
LONGITUDE = 104°28'56.43" (104.482342)	LONGITUDE = 104°28'54.20" (104.481722)	LONGITUDE = 104°28'54.25" (104.481736)
NAD 27 (SURFACE LOCATION)	NAD 27 (HEEL)	NAD 27 (TARGET BOTTOM HOLE)
LATITUDE = 40°54'56.24" (40.915622)	LATITUDE = 40°54'57.09" (40.915858)	LATITUDE = 40°56'35.84" (40.943289)
LONGITUDE = 104°28'54.58" (104.481828)	LONGITUDE = 104°28'52.35" (104.481208)	LONGITUDE = 104°28'52.40" (104.481222)
STATE PLANE NAD 83 (CO. NORTH)	STATE PLANE NAD 83 (CO. NORTH)	STATE PLANE NAD 83 (CO. NORTH)
N: 1578021.08 E: 3281266.10	N: 1578108.68 E: 3281436.93	N: 1588102.27 E: 3281317.76
STATE PLANE NAD 27 (CO. NORTH)	STATE PLANE NAD 27 (CO. NORTH)	STATE PLANE NAD 27 (CO. NORTH)
N: 578019.15 E: 2281415.60	N: 578106.76 E: 2281586.43	N: 588100.14 E: 2281467.30

CERTIFICATE
THIS IS TO CERTIFY THAT THE ABOVE PLAT WAS PREPARED FROM FIELD NOTES OF ACTUAL SURVEYS MADE BY ME OR UNDER MY SUPERVISION, AND THAT THE SAME ARE TRUE AND CORRECT TO THE BEST OF MY KNOWLEDGE AND BELIEF.

REGISTERED LAND SURVEYOR
REGISTRATION NO. 28285
STATE OF COLORADO

REV: 1 03-22-17 T.B. (SHL CHANGE)

BASIS OF BEARINGS
BASIS OF BEARINGS IS A G.P.S. OBSERVATION

BASIS OF ELEVATION

SPOT ELEVATION AT THE NORTHEAST CORNER OF SECTION 1, T11N, R63W, 6th P.M., TAKEN FROM THE HEREFORD, QUADRANGLE, COLORADO, WELD COUNTY, 7.5 MINUTE QUAD. (TOPOGRAPHIC MAP) PUBLISHED BY THE UNITED STATES DEPARTMENT OF THE INTERIOR, GEOLOGICAL SURVEY. SAID ELEVATION IS MARKED AS BEING 5352 FEET.



UELS, LLC
Corporate Office * 85 South 200 East
Vernal, UT 84078 * (435) 789-1017



FIFTH CREEK ENERGY COMPANY, LLC

CRITTER CREEK #202-1807H
LOT 4, SECTION 18, T11N, R63W, 6th P.M.
WELD COUNTY, COLORADO

SURVEYED BY	GREG WEIMER, N.P.	01-20-17	SCALE
DRAWN BY	T.B.	02-01-17	1" = 1000'

WELL LOCATION PLAT