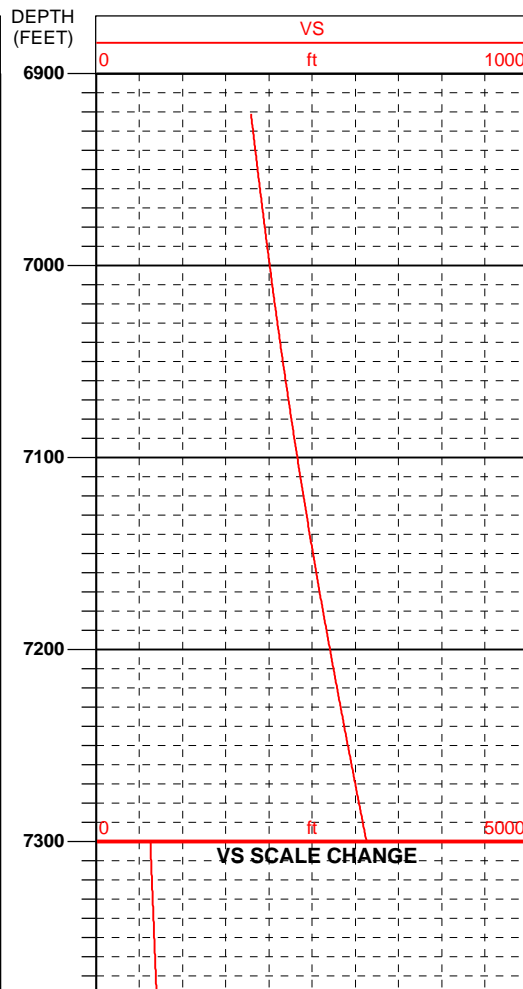
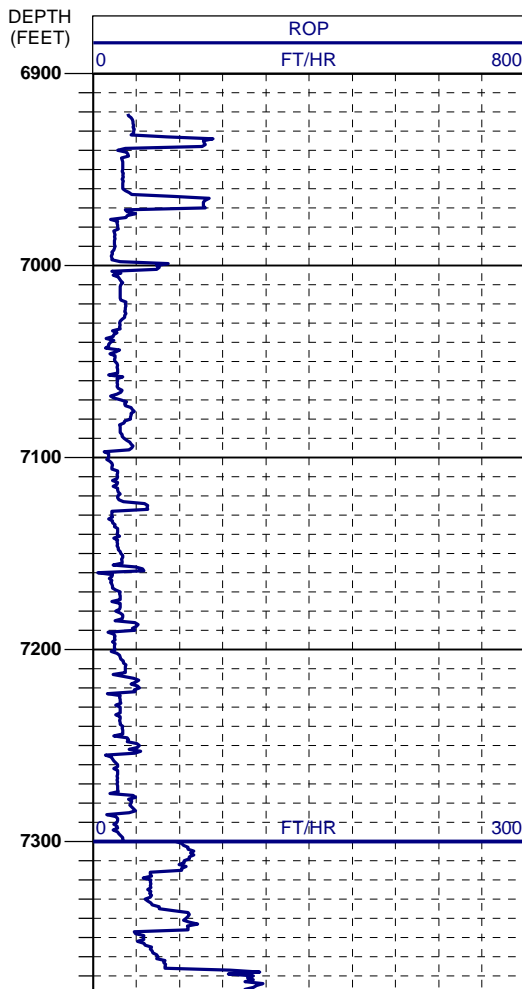
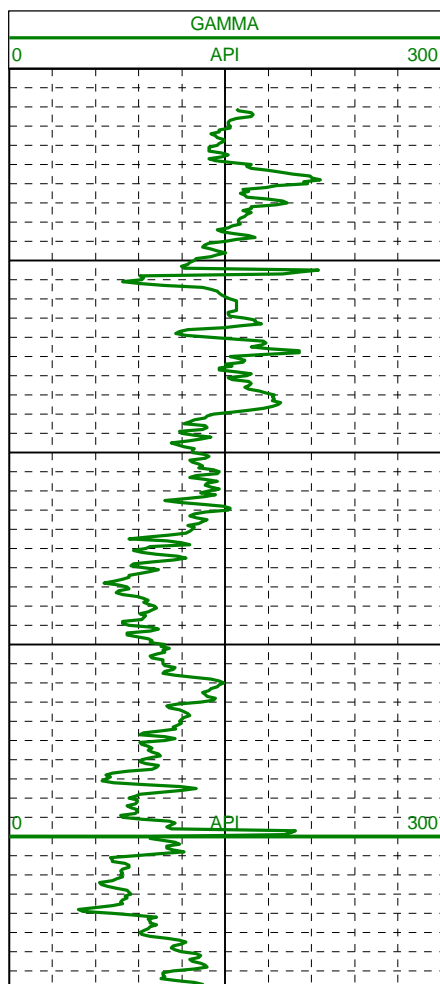
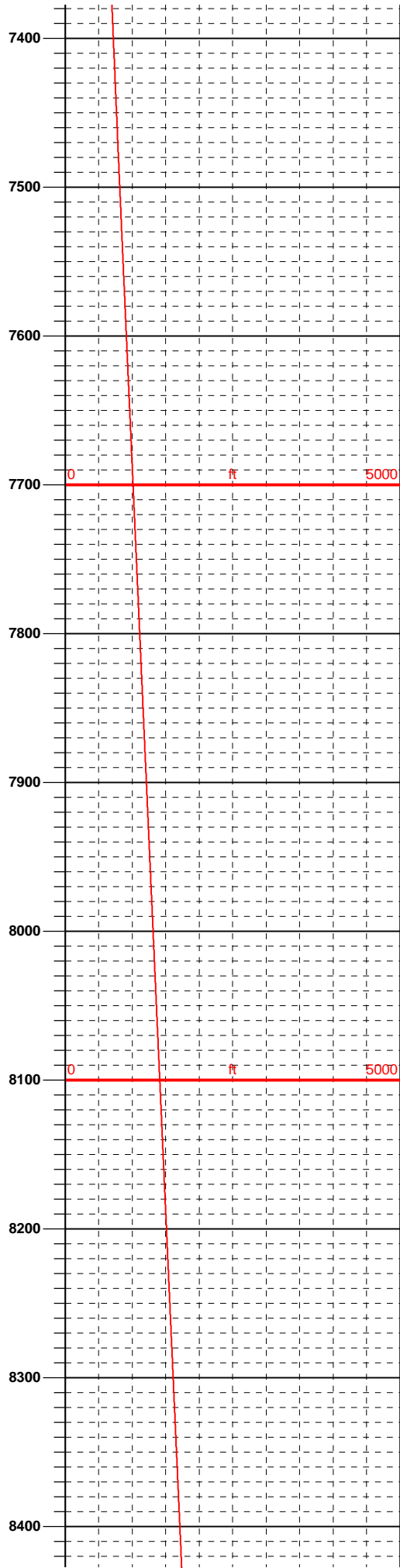
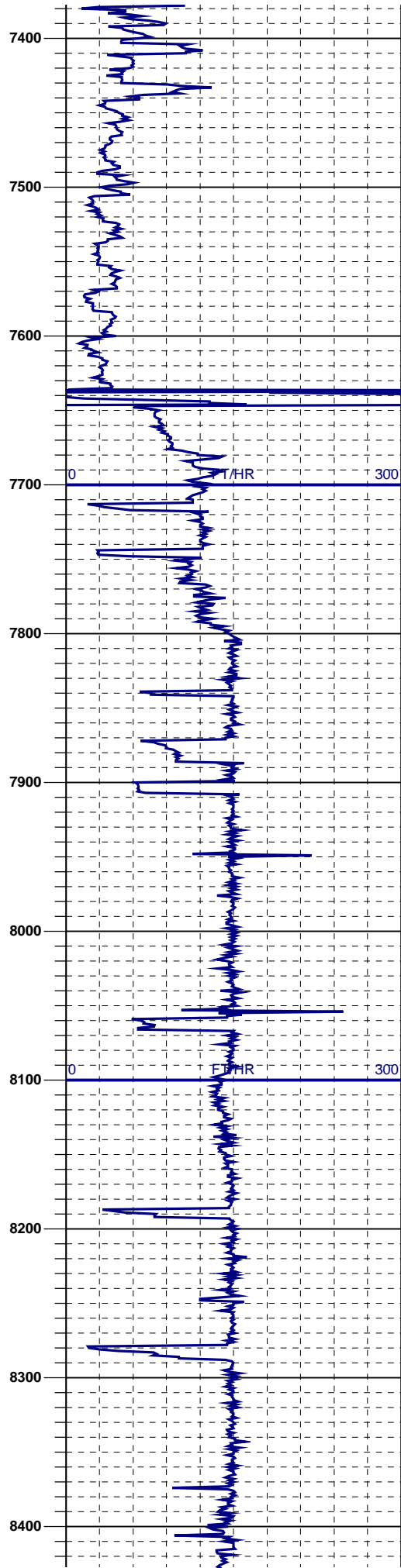
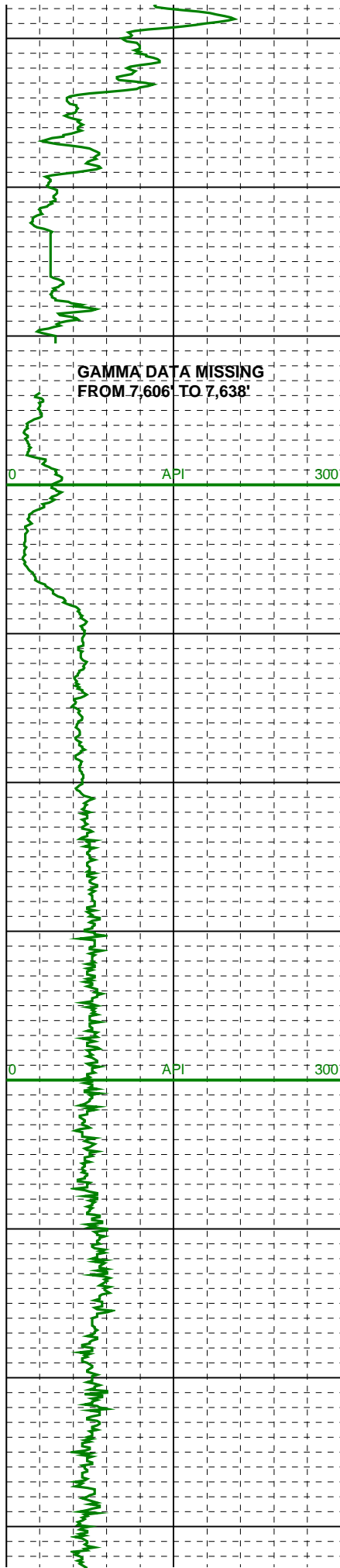
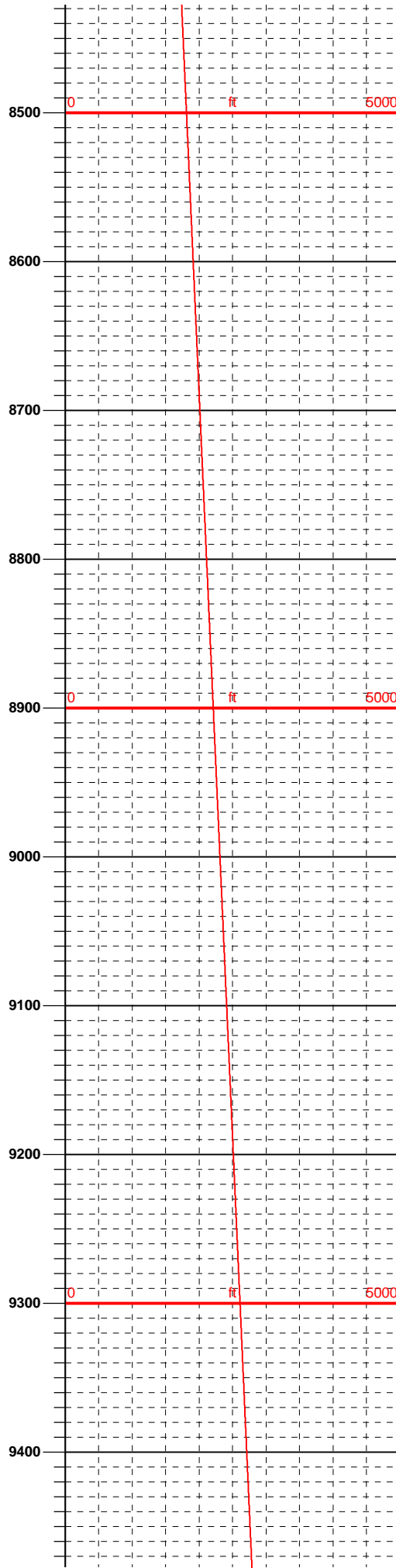
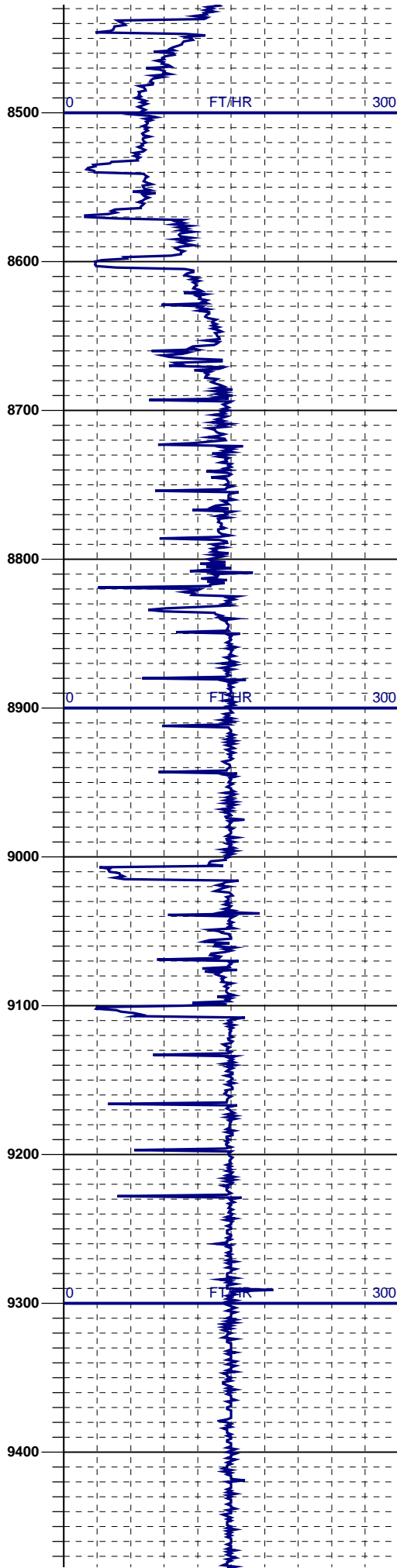
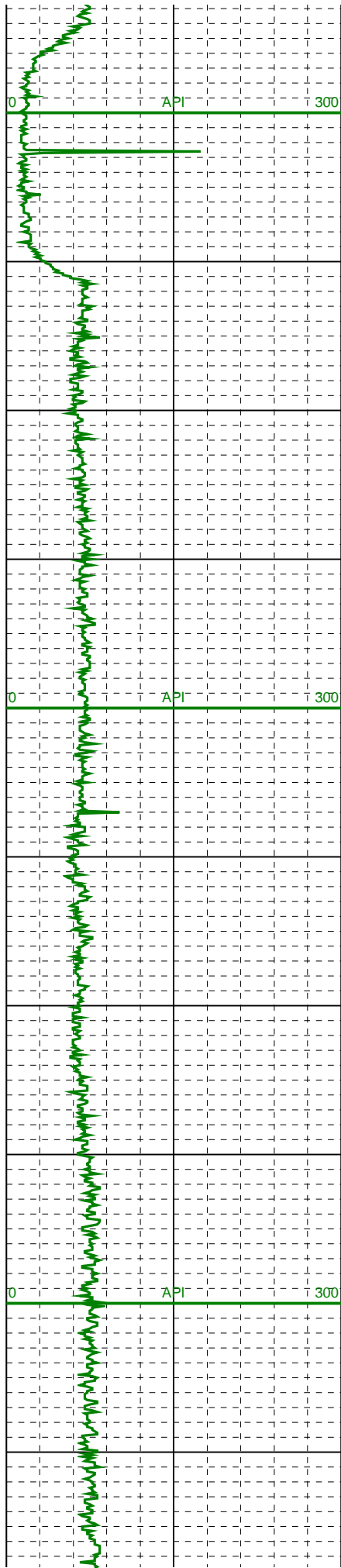


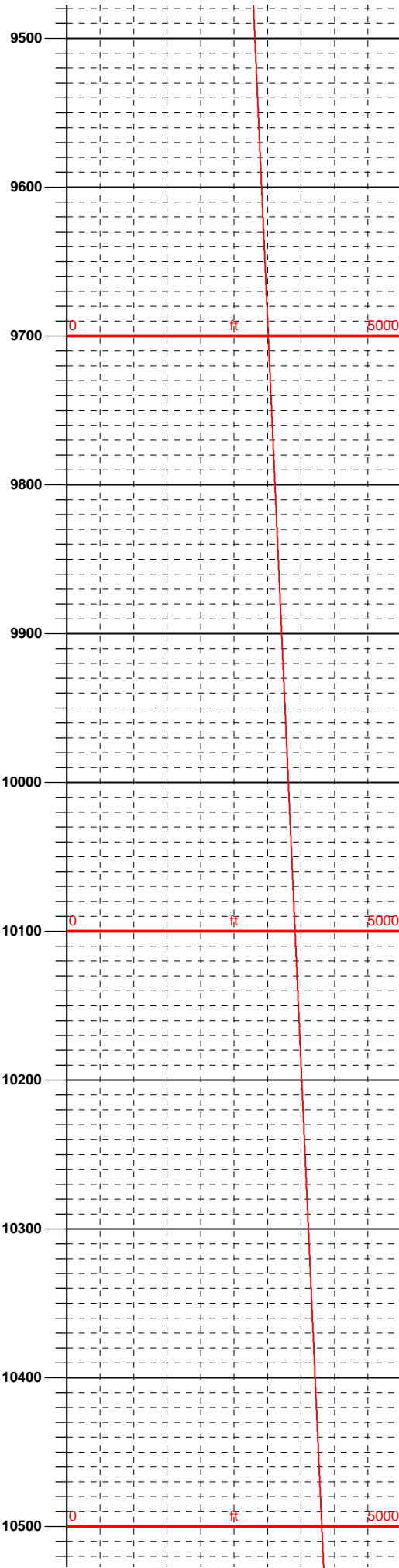
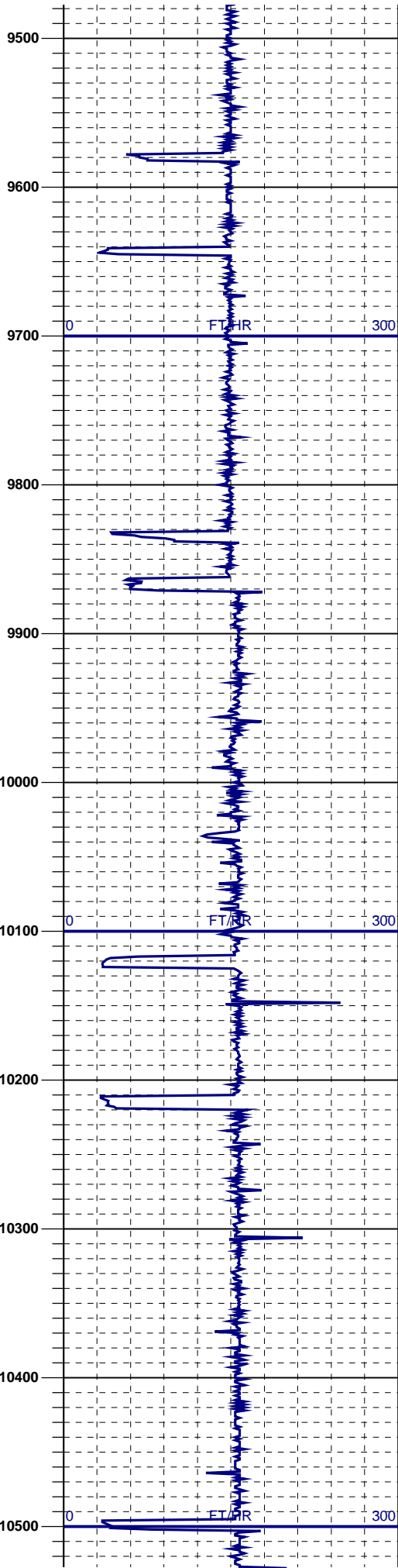
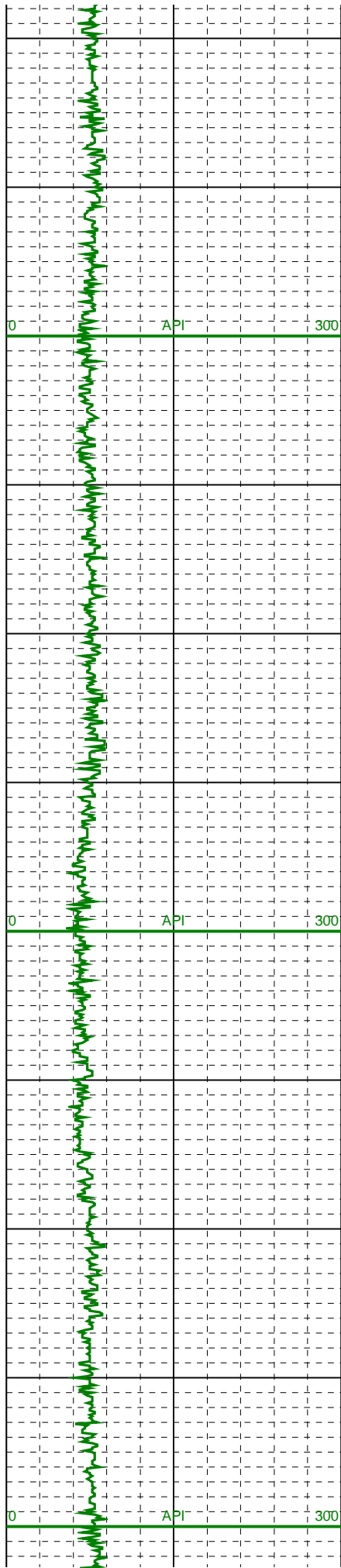
LOG created using LPLOT VH Version 3.0, April 13, 2013, Copyright (C) 1999-2009 Pason Systems Corp.

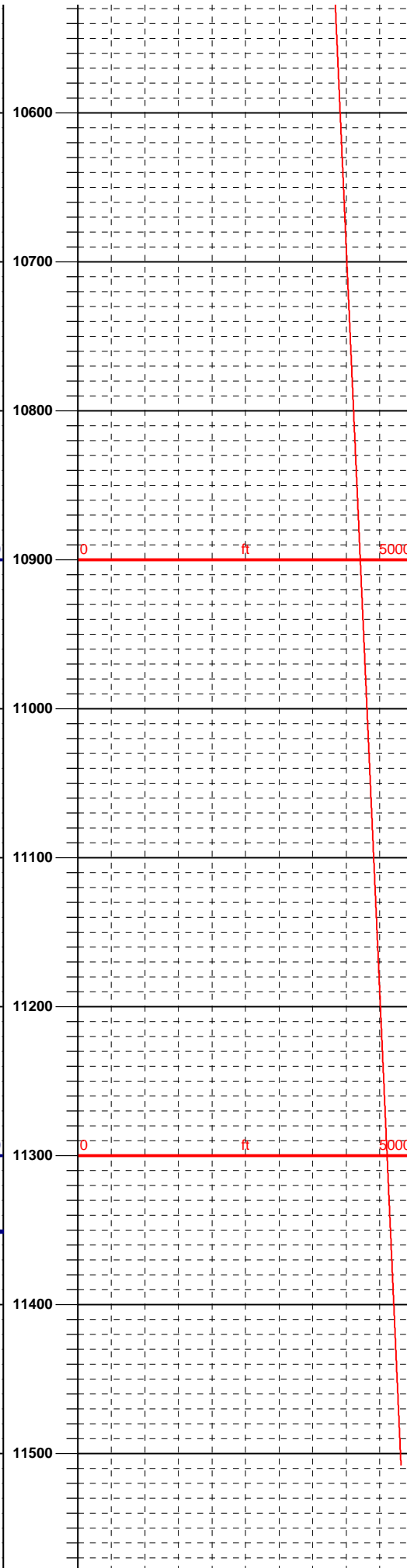
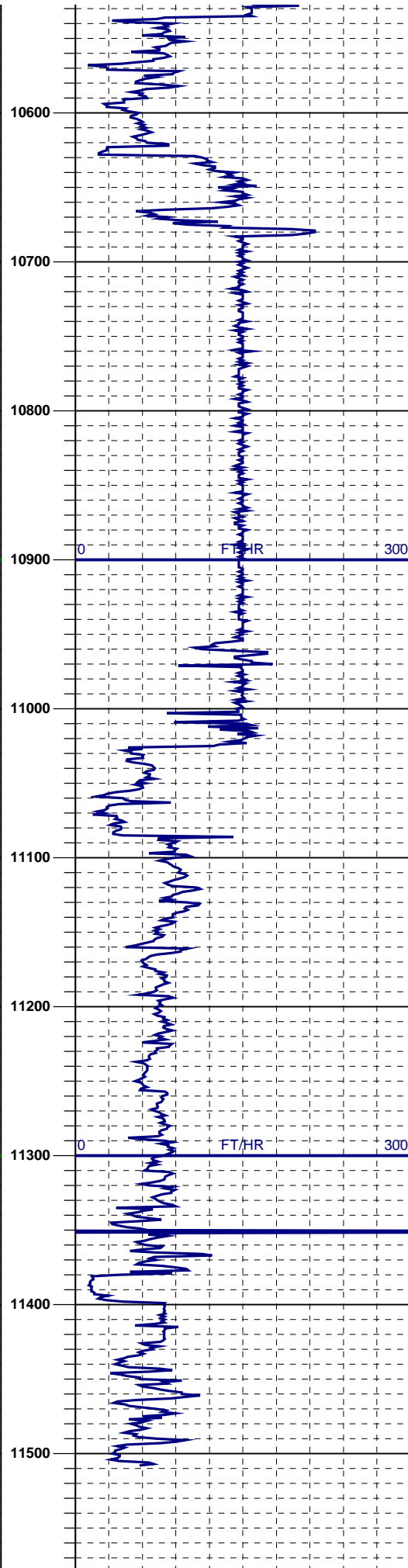
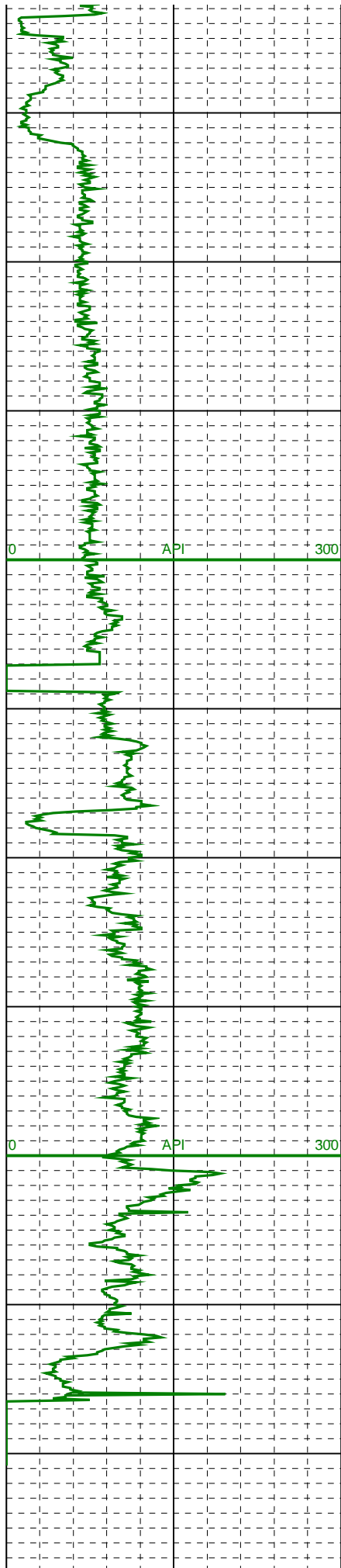
OPERATOR: PETROLEUM DEVELOPMENT CORPORATION
WELL: LEFFLER 34-1CH
LOCATION: SWSW SEC. 1, T6N, R66W
COUNTY: WELD
STATE: COLORADO
SPOT: (SHL) 234' FSL & 385' FWL)
ELEVATION: GL: 4,815'; KB: 4,830'
FIELD: WATTENBERG
SYSTEM: PASON
WELL TYPE: HORIZONTAL
DATES LOGGED: APRIL 8, 2013 TO APRIL 14, 2013
DEPTHS LOGGED: 6,921' TO 11,508'
LOGGERS: PASON COMMAND CENTER
DRILLING FLUID:
DRILLING RIG: ENSIGN 32
API: 05-123-36440-0000
LOG TYPE: MD
SCALE: 1:1200 (1 inch per 100 feet)
REMARKS:











11600.

11600

A diagram of a 10x10 grid with dashed lines. The grid is divided into four 5x5 quadrants by a solid vertical line and a solid horizontal line. The top-left and bottom-right quadrants are shaded gray. The top-right and bottom-left quadrants are white. The grid is labeled with numbers 1 through 10 along the top and left edges.