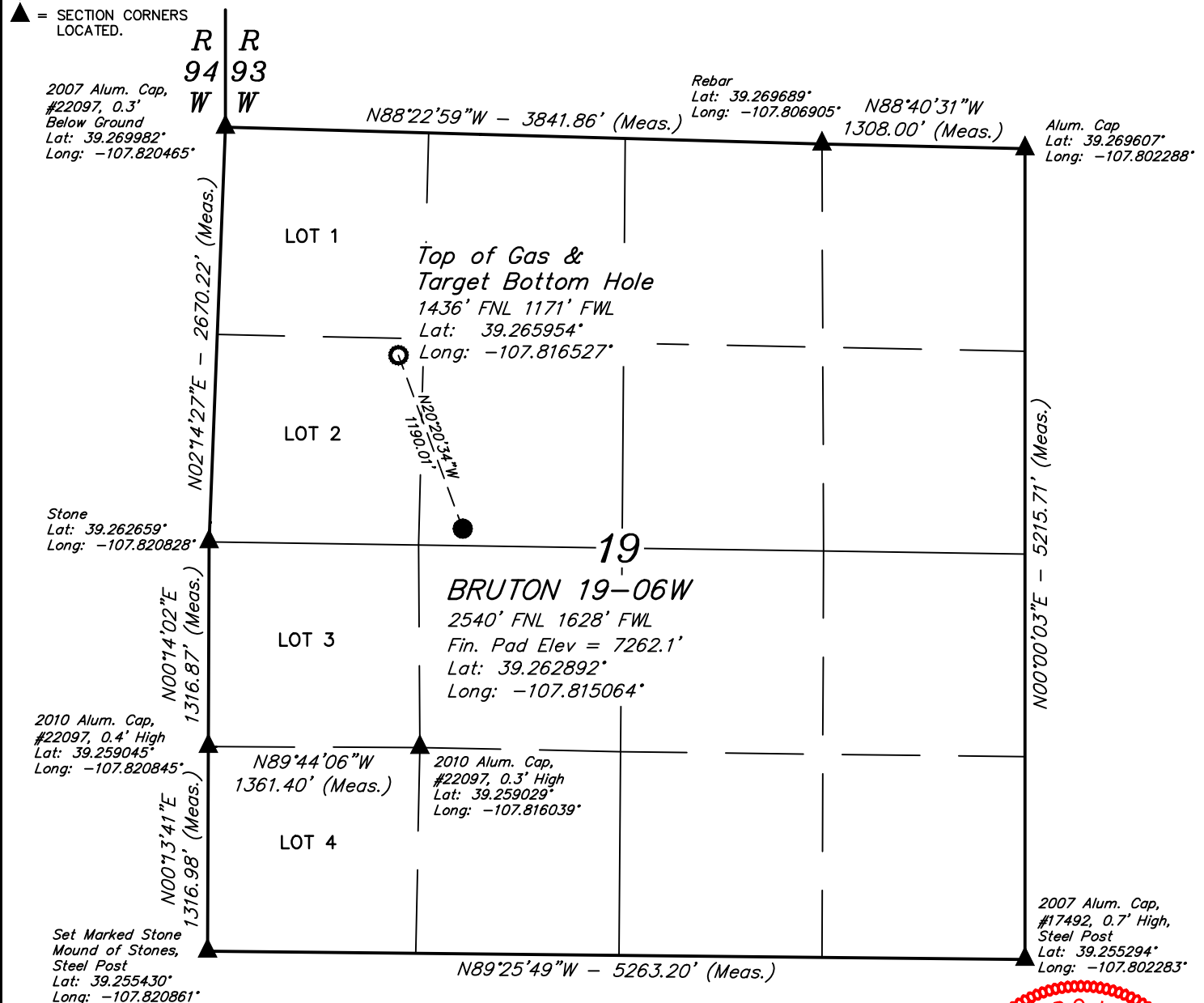


**LEGEND:**

- = PROPOSED WELLHEAD.  
 ○ = TOP OF GAS & TARGET BOTTOM HOLE.  
 ▲ = SECTION CORNERS LOCATED.

**T9S, R93W, 6th P.M.**

**NOTE DISTANCE TO NEAREST:**

BUILDING: N33°E 831'  
 BUILDING UNIT: N25°E 880'  
 HOB: OVER A MILE  
 DOAA: OVER A MILE  
 PUBLIC ROAD: N33°W 2050'  
 ABOVE GROUND UTILITY: S08°W 362'  
 RAILROAD: OVER A MILE  
 PROPERTY LINE: WEST 279'

**NOTE:**

- 1.) All latitudes and longitudes are given in NAD 83 coordinates.
- 2.) Distances to nearest section lines are measured perpendicularly.

**CERTIFICATE**

THIS IS TO CERTIFY THAT THE ABOVE PLAT WAS PREPARED FROM FIELD NOTES OF ACTUAL SURVEYS MADE BY ME OR UNDER MY SUPERVISION AND THAT THE LOCATION HAS BEEN STAKED ON THE GROUND AS SHOWN ON THE PLAT AND THAT THE SAME ARE TRUE AND CORRECT TO THE BEST OF MY KNOWLEDGE AND BELIEF.

REGISTERED LAND SURVEYOR  
 REGISTRATION NO. 18180  
 STATE OF COLORADO 05-06-17

REV: 1 02-23-17 S.S. (SHL & BHL MOVE)

**BASIS OF BEARINGS**

BASIS OF BEARINGS IS A G.P.S. OBSERVATION

**BASIS OF ELEVATION**

BENCH MARK (19 RDS) LOCATED IN THE SE 1/4 OF SECTION 16, T9S, R93W, 6th P.M., TAKEN FROM THE SOUTH MAMM PEAK, QUADRANGLE, COLORADO, 7.5 MINUTE QUAD. (TOPOGRAPHIC MAP) PUBLISHED BY THE UNITED STATES DEPARTMENT OF THE INTERIOR, GEOLOGICAL SURVEY. SAID ELEVATION IS MARKED AS BEING 7252 FEET.

**LARAMIE ENERGY, LLC**

**BRUTON 19-06W**  
**SE 1/4 NW 1/4, SECTION 19, T9S, R93W, 6th P.M.**  
**MESA COUNTY, COLORADO**

SURVEYED BY: CODY RICH	DATE: 11-14-16
DRAWN BY: S.S.	DATE DRAWN: 11-18-16
SCALE: 1" = 1000'	

**WELL LOCATION PLAT**

**UELS, LLC**  
 Corporate Office \* 85 South 200 East  
 Vernal, UT 84078 \* (435) 789-1017