

T6N, R81W, 6th P.M.

SandRidge Exploration & Production, LLC

Well location, REU 0681 3-23H35 located as shown in the SW1/4NE1/4 of Section 23, T6N, R81W, 6th P.M., Jackson County, Colorado.

BASIS OF BEARINGS:

US STATE PLANE 1983
CO NORTH 0501 GRID

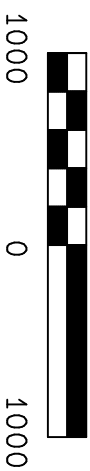
BASIS OF ELEVATION

SPOT ELEVATION AT THE NW CORNER OF SECTION 23, T6N, R81W, 6TH PM, TAKEN FROM THE SPICER PEAK QUADRANGLE, USGS 7.5 MIN QUAD (TOPOGRAPHIC MAP) WITH SAID ELEVATION MARKED AS BEING 8313 FEET.

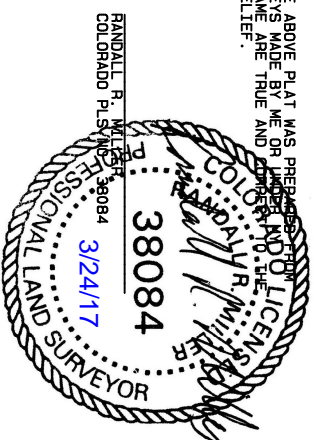
LEGEND

90° SYMBOL
FOUND CORNER
PROPOSED WELL
PROPOSED BHL/LPL

GRAPHIC SCALE 1"=1000'



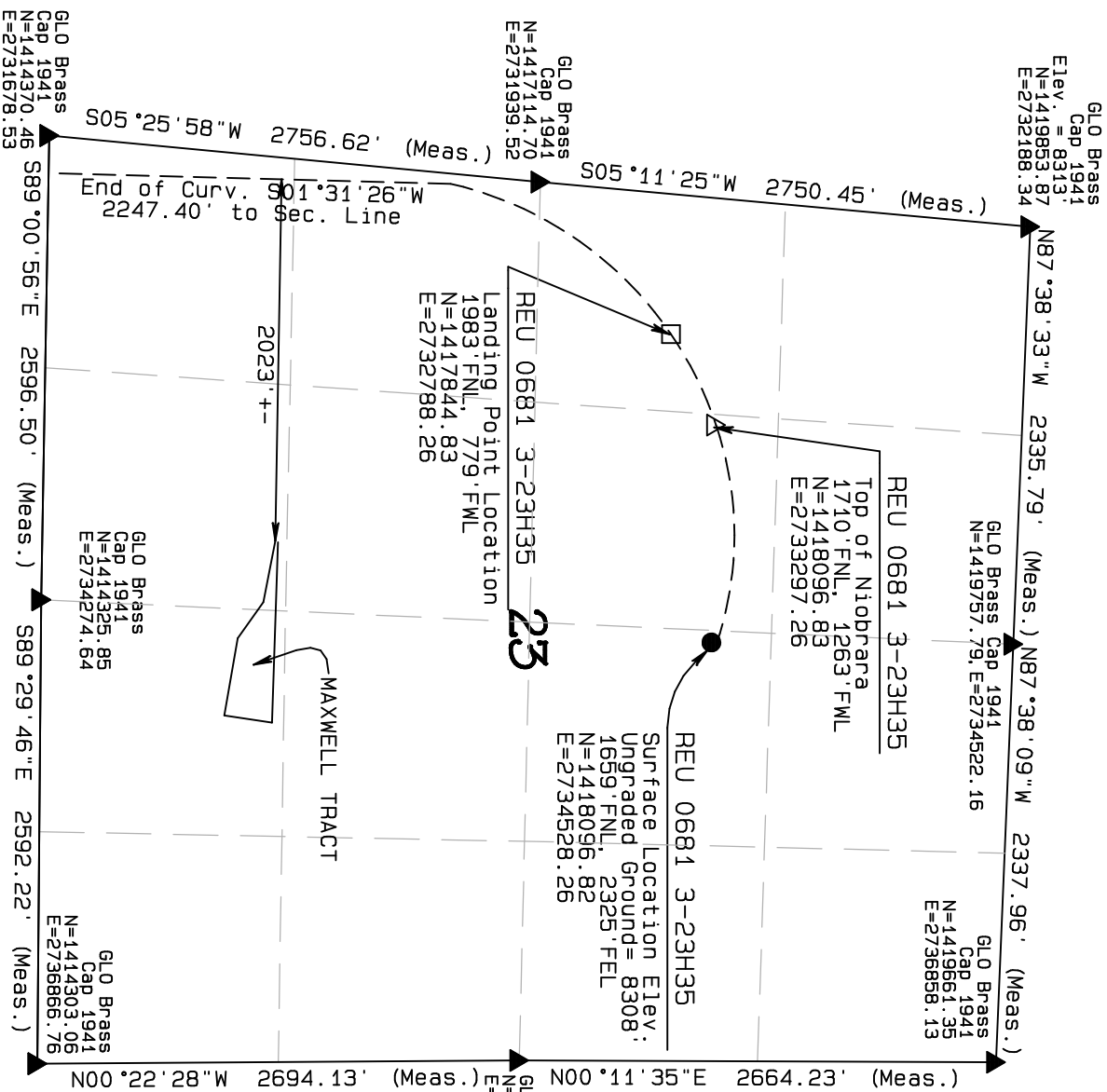
THIS IS TO CERTIFY THAT THE ABOVE PLAT WAS PREPARED BY ME OR UNDER MY CLOSE PERSONAL SUPERVISION AND THAT THE SAME IS TRUE AND CORRECT TO THE BEST OF MY KNOWLEDGE AND BELIEF.



NORTH PARK ENGINEERING & CONSULTING, INC.

P.O. BOX 395
WALDEN, CO 80480
(970) 723-3725

DATE OF FIELD WORK: MAR 20, 2016 DRAWING COMPLETION: MAR 8, 2017
SURVEYED BY: ADL DRAWN BY: TKH CHECKED BY: RHM



NAD 83 (TOP OF NIOBRARA)

LATITUDE=40.47712°N
LONGITUDE=106.458714°W
PDOP = 1.425

NAD 83 (TARGET BOTTOM HOLE)

LATITUDE=40.437524°N
LONGITUDE=106.463408°W

NAD 83 (LEASE ENTRY)
LATITUDE=40.455772°N
LONGITUDE=106.463733°W

T6N, R81W, 6th P.M.

SandRidge Exploration & Production, LLC

Intermediate Section, REU 0681 3-23H35 located as shown in the W1/2 of Section 26, T6N, R81W, 6th P.M., Jackson County, Colorado.

BASIS OF BEARINGS:

US STATE PLANE 1983
CO NORTH 0501 GRID

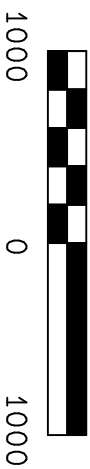
BASIS OF ELEVATION

SPOT ELEVATION AT THE NW CORNER OF SECTION 23, T6N, R81W, 6TH PM, TAKEN FROM THE SPICER PEAK QUADRANGLE, USGS 7.5 MIN QUAD (TOPOGRAPHIC MAP) WITH SAID ELEVATION MARKED AS BEING 8313 FEET.

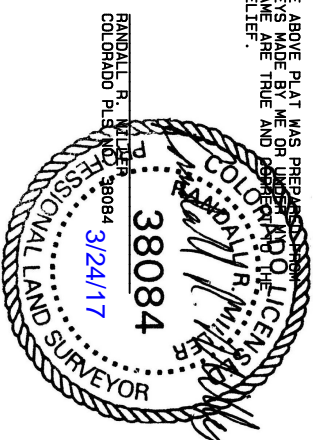
LEGEND

- 90° SYMBOL
- FOUND CORNER
- PROPOSED WELL
- PROPOSED BHL/LPL

GRAPHIC SCALE 1"=1000'



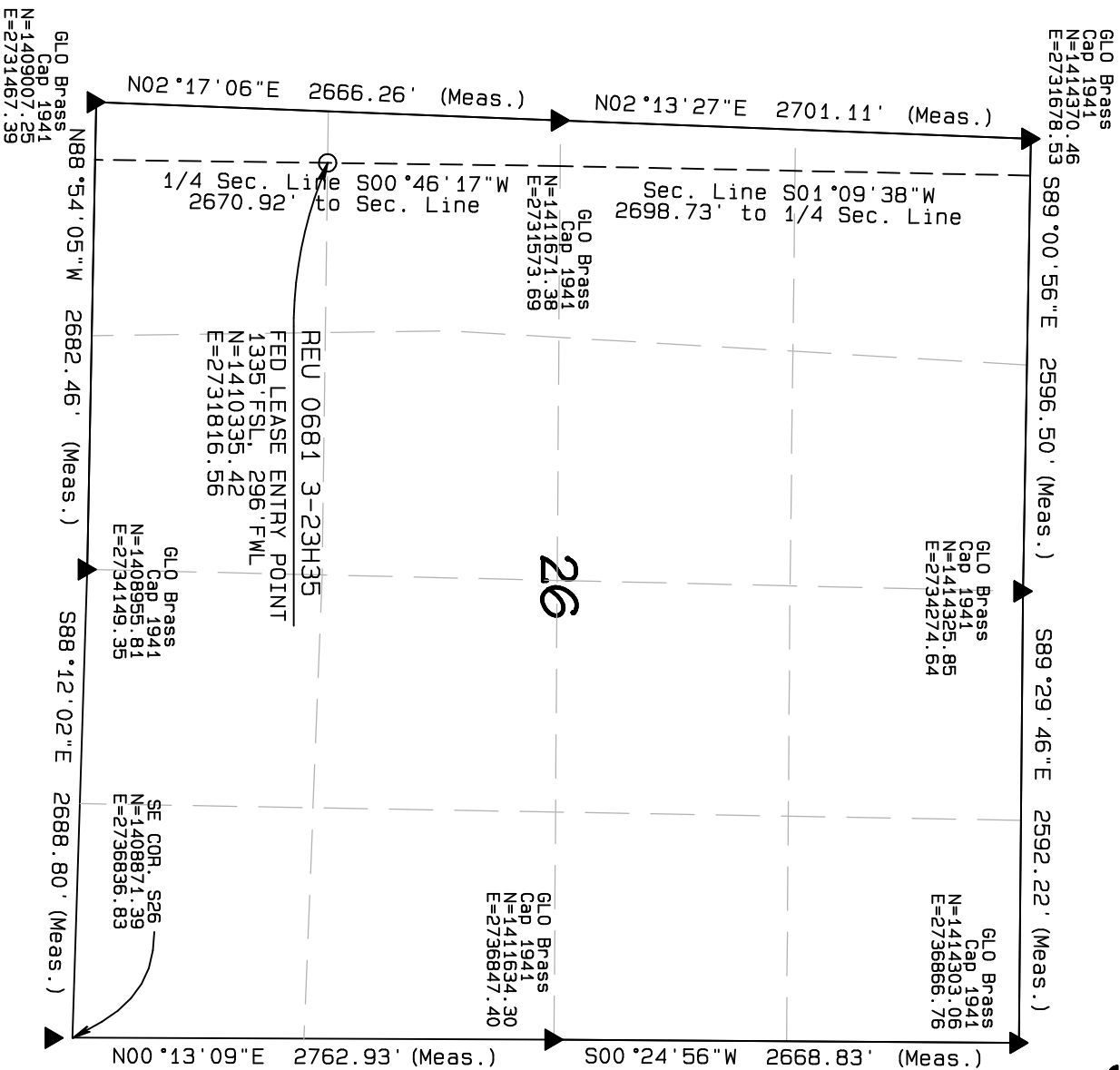
THIS IS TO CERTIFY THAT THE ABOVE PLAT WAS PREPARED BY ME IN ACCORDANCE WITH THE PROVISIONS OF ACTUAL SURVEY MADE BY ME OR UNDER MY CLOSE PERSONAL SUPERVISION AND THAT THE SAME IS TRUE AND CORRECT TO THE BEST OF MY KNOWLEDGE AND BELIEF.



NORTH PARK ENGINEERING & CONSULTING, INC.

P.O. BOX 395
WALDEN, CO 80480
(970) 723-3725

DATE OF FIELD WORK: MAR 20, 2016 DRAWING COMPLETION: MAR 8, 2017
SURVEYED BY: ADL DRAWN BY: TKH CHECKED BY: RHM



NAD 83 (TOP OF NIOBRARA)

LATITUDE=40.47712°N
LONGITUDE=106.458714°W

NAD 83 (TARGET BOTTOM HOLE)

LATITUDE=40.437524°N
LONGITUDE=106.463408°W

NAD 83 (LEASE ENTRY)

LATITUDE=40.455772°N
LONGITUDE=106.463733°W

