



SRC ENERGY

Operator: SRC Energy
Well Name: Bowen #25-10
Legal: NWSE, Section 25, Township 4N, Range 67W
Location: Weld County, CO
API: 05-123-14268

Deepest Water Well Within 1
Mile = 70'




Wellbore History

Spud Date: 04/20/1989
Surf Csg: 8.625", 24# @ 265' – 230 sx
Prod Csg: 4.5", 15.1# @ 7434' - 250 sx
TOC: 6210' (CBL)
Perfs: NIOBRARA A: 6976'-6980'
NIOBRARA B: 7044'-7048'
NIOBRARA C: 7070'-7084'
CODELL: 7267' – 7287'

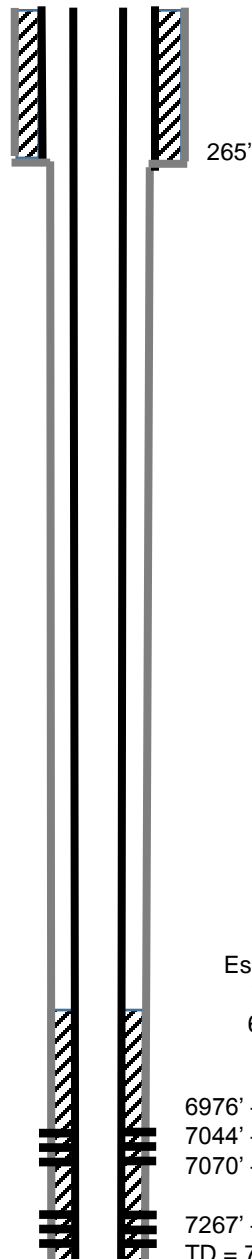
P&A Procedure

Set retainer@ 6901' and squeeze perfs
Set 5 sx on top of retainer (50' plug)
Cut Casing @ 275'
Pmp 135 sx @ 325' to surface

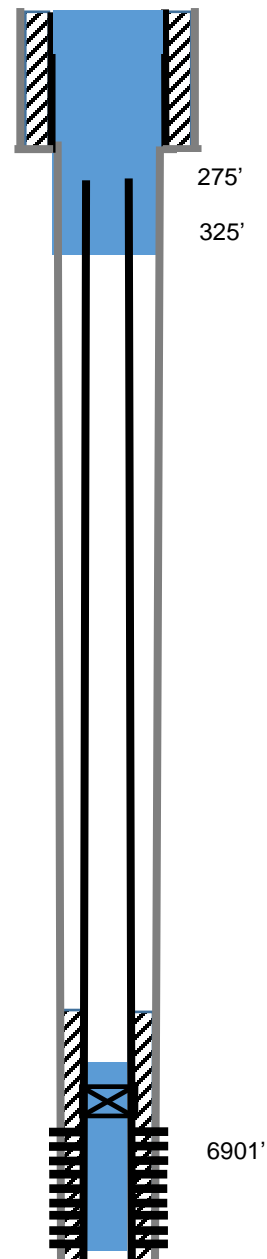
Key

-  Existing Cement Coverage
-  Retainer
-  Cement Pumped

Current



Proposed



Estimated
TOC
6210'

6976' – 6980'
7044' – 7048'
7070' – 7084'

7267' – 7287'
TD = 7454'

6901'