

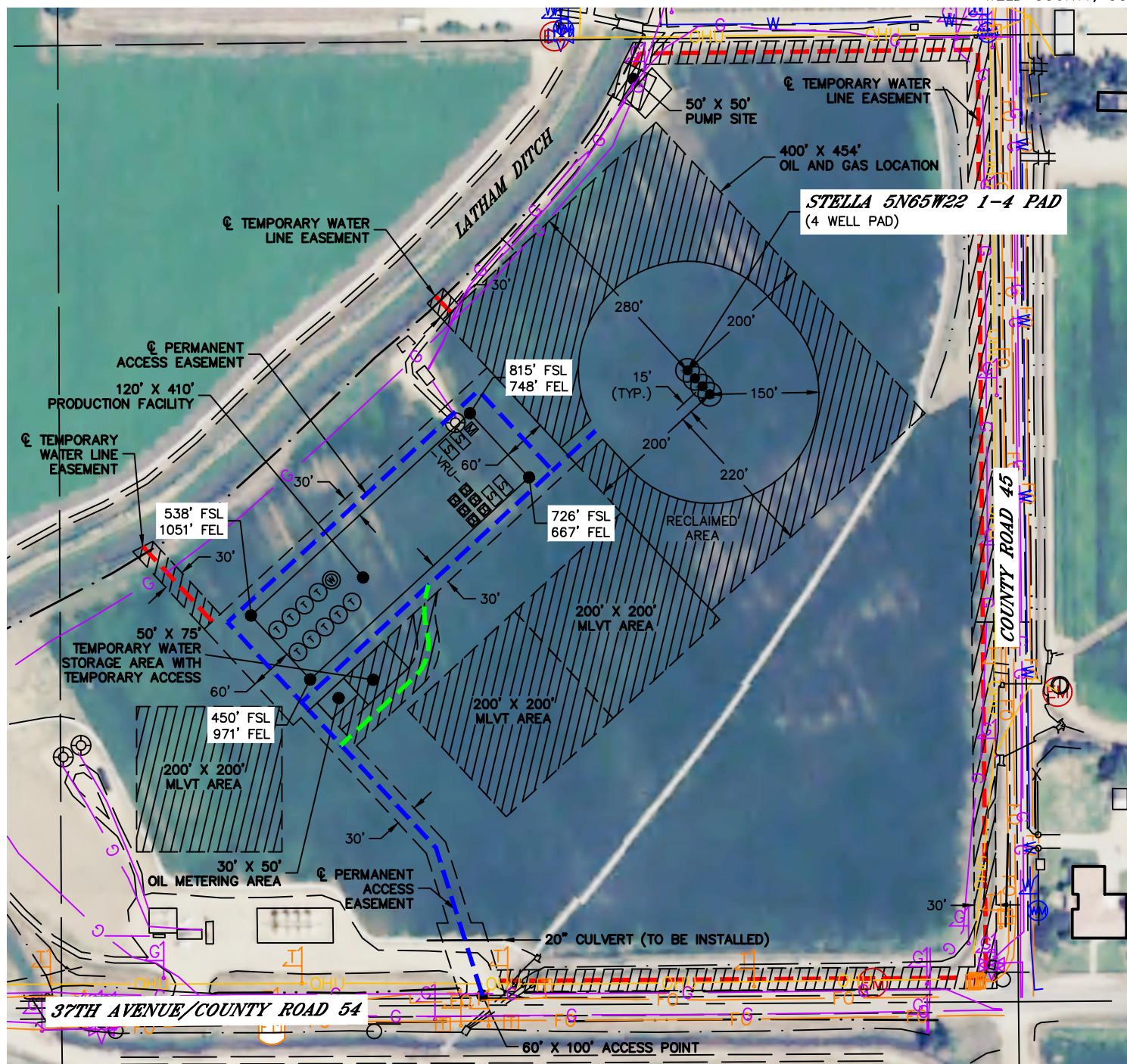


Lat40°, Inc. 6250 W. 10th Street, Unit 2, Greeley, CO 970-515-5294

# PROPOSED SCALED FACILITY DRAWING

STELLA 5N65W22 1-4 PAD

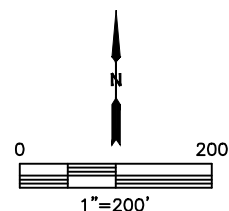
SECTION: 22  
TOWNSHIP: 5N  
RANGE: 65W  
6TH. P.M.  
WELD COUNTY, CO



## LEGEND

- PROPOSED WELL HEAD
- T TANK BATTERY
- W WATER TANK
- W WATER VAULT
- S SEPARATOR
- ECD
- M METER
- VRU- VAPOR RECOVERY UNIT

TOTAL DISTURBED AREA OF LOCATION: ±12.5 ACRES  
TOTAL SIZE OF LOCATION AFTER RECLAMATION: ±4.6 ACRES



DATE: 3/21/2017  
PROJECT#: 2016091