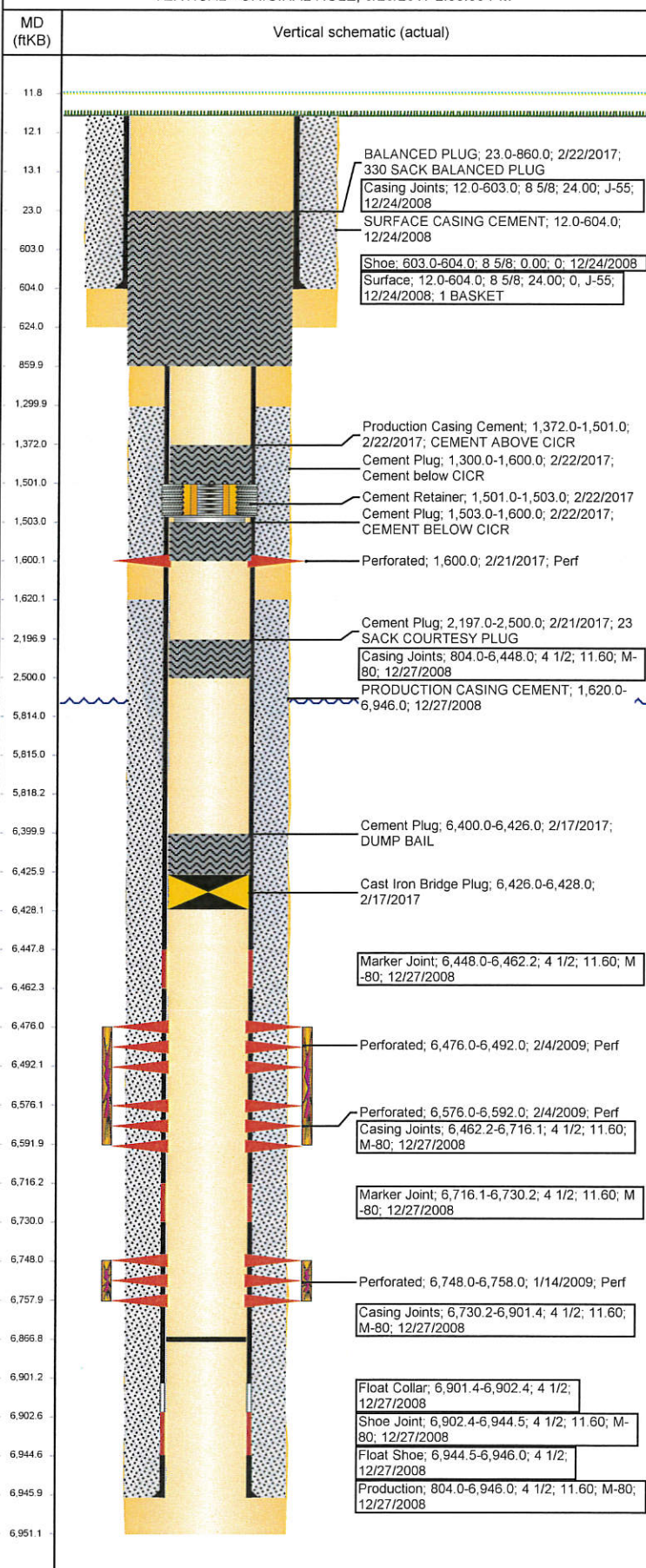


# Wellbore Schematic Input Report

Well Name: BASHOR STATE AA16-10

VERTICAL - ORIGINAL HOLE, 3/23/2017 2:36:00 PM



## Well Header

API 05-123-29263	Business Unit DJ BASIN	District 15	Well Config VERTICAL
Original KB Elevation (ft) 4,695	KB - GL / MSL (ftKB) 12.00	Spud Date 12/23/2008	P & A Date 2/22/2017
Comment			

## Directions To Well

BASHOR STATE AA16-10; WCR 67 & 68, .75 WEST, NORTH .5, EAST .5, SOUTH INTO LOCATION.

## Congressional Location

Quarter 3 NW	Quarter 4 SE	Section 16	Township 6	Twnshp N/S Dir N	Range 63	Range E/W Dir W
-----------------	-----------------	---------------	---------------	---------------------	-------------	--------------------

## Bottom Hole Location

North-South Distance (ft)	From N or S Line	East-West Distance (ft)	From E or W Line
---------------------------	------------------	-------------------------	------------------

## Plug Back Total Depths

Date	Depth (ftKB)	Method	Com
12/27/2008	6,901.0	CASING TALLY	
3/18/2009	6,892.0	TAG	
3/8/2013	6,877.0	TAG	
6/5/2013	6,866.8	TBG TAG	

## Wellbore Sections

Section Des	Size (in)	Act Top, MD (ftKB)	Act Btm, MD (ftKB)
SURFACE	12 1/4	12	624
PRODUCTION	7 7/8	624	6,951

## Zone Statuses

Zone Name	Status Date	Status	Fluid Type	Job	Prod Method
CODELL	2/6/2009	PR		DRILLING - OR...	
CODELL	2/17/2017	P&A		ABANDON WE...	
NIOBRARA	2/6/2009	PR		DRILLING - OR...	
NIOBRARA	2/17/2017	P&A		ABANDON WE...	

## Casing Strings

### Surface, 604.0ftKB

Casing Description	Run Date	OD (in)	Wt/Len (lb/ft)	Grade	Top, MD (ft)	MD (ftKB)
Surface	12/24/2008	8 5/8	24.00	J-55	12.0	604.0

### Production, 6,946.0ftKB

Casing Description	Run Date	OD (in)	Wt/Len (lb/ft)	Grade	Top, MD (ft)	MD (ftKB)
Production	12/27/2008	4 1/2	11.60	M-80	12.0	6,946.0

## Cement

Description	Top Depth (ftKB)	Bottom Depth (ftKB)
SURFACE CASING CEMENT	12.0	604.0
PRODUCTION CASING CEMENT	1,620.0	6,946.0
Cement Plug	6,400.0	6,426.0
Cement Plug	2,197.0	2,500.0
Cement Plug	1,300.0	1,600.0
Production Casing Cement	1,372.0	1,501.0
Cement Plug	1,503.0	1,600.0
BALANCED PLUG	23.0	860.0

## Tubing Strings

Tubing Description	Run Date	String	ID (in)	Wt (lb/ft)	Grade	Len (ft)	Set De...
Tubing - Production		2 3/8	2.00	4.70	J-55	5,806.8	5,816.8
Tubing - Production	3/18/2009	2 3/8	2.00	4.70	J-55	6,718.67	6,726.8
Tubing - Production	6/5/2013	2 3/8	2.00	4.70	J-55	6,730.50	6,729.0

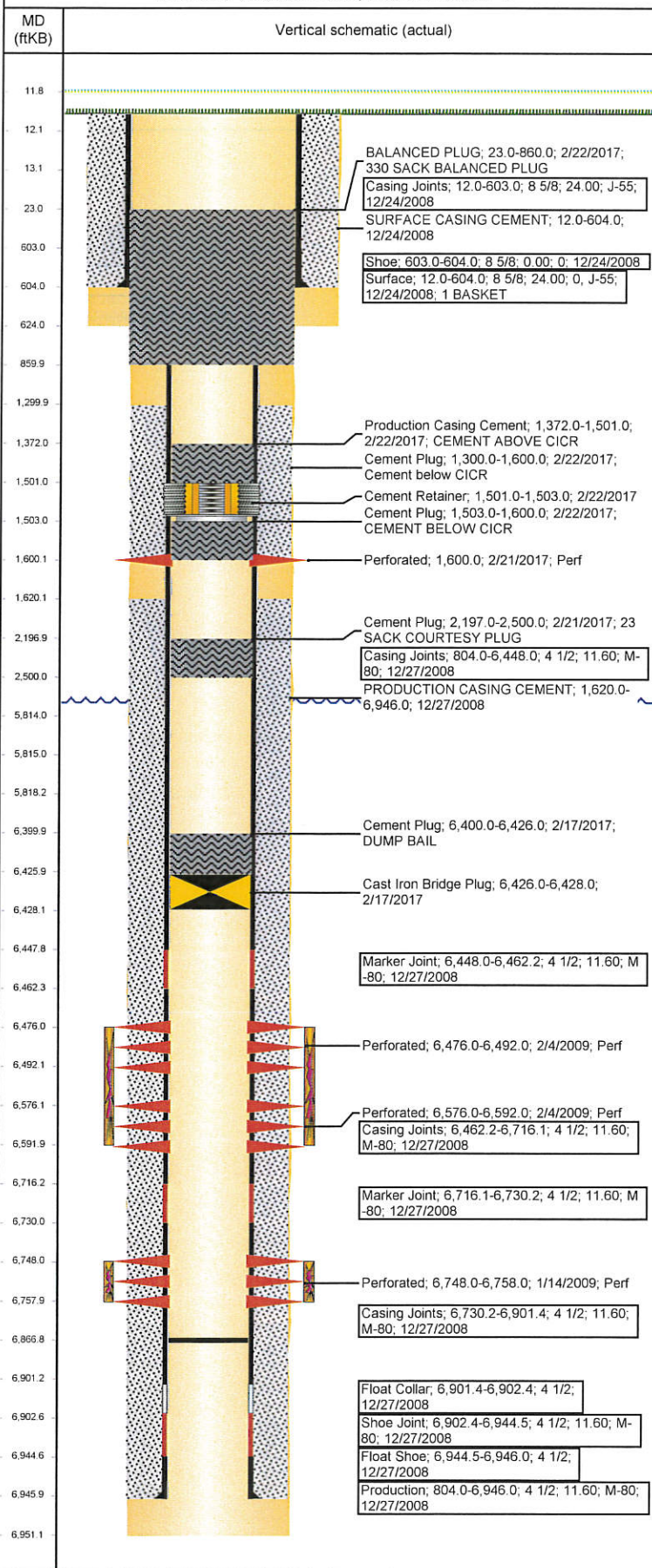
## Other In Hole

Run Date	Des	OD (in)	Top (ftKB)	Btm (ftKB)
2/17/2017	Cast Iron Bridge Plug	3.99	6,426.0	6,428.0
2/22/2017	Cement Retainer	3.99	1,501.0	1,503.0



Well Name: BASHOR STATE AA16-10

VERTICAL - ORIGINAL HOLE, 3/23/2017 2:36:00 PM



## Logs

Date	Type	Top, MD (ftKB)	Btm, MD (ftKB)
12/27/2008	Caliper/comp. Density/Neutron/GR/SP/ML	604.0	6,960.0
12/27/2008	CBL/CCL/GR	604.0	6,960.0
1/14/2009	CBL/CCL/GR	1,620.0	6,946.0
10/24/2012	GYRO	12.0	6,700.0

## Perforation Data

Linked Zone	Bnch/St g	Sum of Entered Shot Total	Top (ftKB)	Btm (ftKB)	Date
<zonenumber>, ORIGINAL HOLE		4	1,600.00	1,600.00	2/21/2017
NIOBRARA, ORIGINAL HOLE	A	32	6,476.00	6,492.00	2/4/2009
NIOBRARA, ORIGINAL HOLE	B	32	6,576.00	6,592.00	2/4/2009
<zonenumber>, ORIGINAL HOLE		40	6,748.00	6,758.00	1/14/2009
<b>Total (Sum)</b>		<b>108</b>			

## Stimulation Intervals

Start Date	Primary Job Type	
2/4/2009	DRILLING - ORIGINAL	
Technical Result	Tech Result Details	Tech Result Note
Success	According to Plan	
Comment		
(CODELL): REVERSE STEP RATE RESULTS: PO - 15. NWB FRIC - 265 PSI. PERF FRIC - 163 PSI. ISIP - 2812 PSI. INC RATE T/ 22 BPM DUE TO HIGH LO. TREATMENT WENT WELL. NOLTE FLAT. POST ISIP - 3247 PSI.		
Start Date	Primary Job Type	
2/4/2009	DRILLING - ORIGINAL	
Technical Result	Tech Result Details	Tech Result Note
Success	According to Plan	
Comment		
(NIOBRARA): ISIP - 3120 PSI. TREATMENT WENT WELL. NOLTE FLAT. POST ISIP - 3255 PSI.		