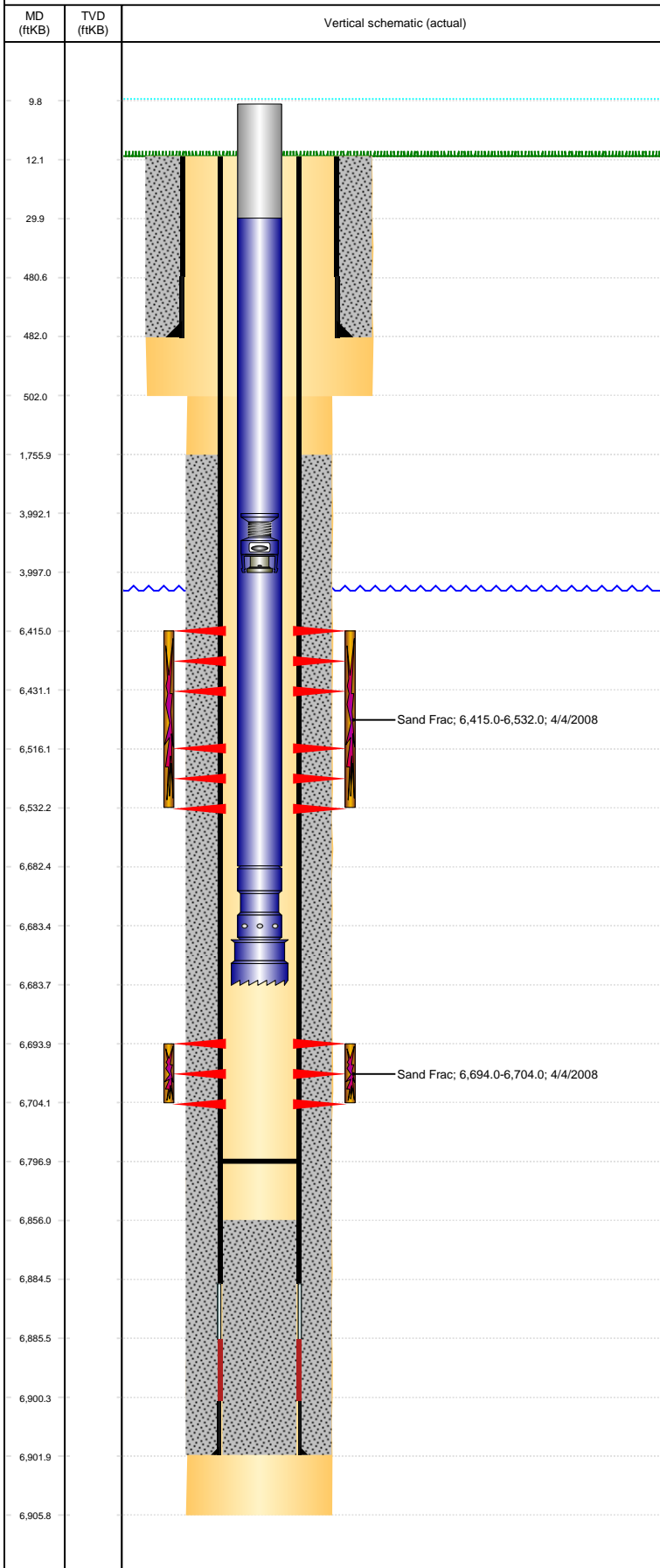


Well Name: WELLS RANCH USX BB03-14

VERTICAL - ORIGINAL HOLE, 3/23/2017 2:29:42 PM



Well Header

API 05-123-26320	Business Unit DJ BASIN	District 15	Well Config VERTICAL
Original KB Elevation (ft) 4,722	KB - GL / MSL (ftKB) 12.00	Spud Date 9/17/2007	P & A Date
Comment			

Directions To Well

WCR 67 & 68, E. 2/10, S. 2 1/2, SW. 1/2, S. 3/4, E. 1/10, SE. 1/10 INTO.

Congressional Location

Quarter 3 SE	Quarter 4 SW	Section 3	Township 5	Twship N/S Dir N	Range 63	Range E/W Dir W
-----------------	-----------------	--------------	---------------	---------------------	-------------	--------------------

Bottom Hole Location

North-South Distance (ft)	From N or S Line	East-West Distance (ft)	From E or W Line
---------------------------	------------------	-------------------------	------------------

Plug Back Total Depths

Date	Depth (ftKB)	Method	Com
9/20/2007	6,884.6	CASING TALLY	TOP OF FLOAT COLLAR
10/18/2007	6,856.0	CASED HOLE LOG	DEPTH LOGGER ON CBL
6/23/2008	6,797.0	TUBING TALLY	DRILLED CIFT W/ SHOE AND PUSHED TO 6797'

Wellbore Sections

Section Des	Size (in)	Act Top, MD (ftKB)	Act Btm, MD (ftKB)
SURFACE	12 1/4	12	502
PRODUCTION	7 7/8	502	6,906

Zone Statuses

Zone Name	Status Date	Status	Fluid Type	Job	Prod Method
CODELL	4/7/2008	PR		DRILLING/CO...	
NIOBRARA	4/7/2008	PR		DRILLING/CO...	

Casing Strings

Surface, 482.0ftKB

Casing Description	Run Date	OD (in)	Wt/Len (l...)	Grade	Top, MD (ft...)	MD (ftKB)
Surface	9/17/2007	8 5/8	24.00	J-55	12.0	482.0

Production, 6,901.9ftKB

Casing Description	Run Date	OD (in)	Wt/Len (l...)	Grade	Top, MD (ft...)	MD (ftKB)
Production	9/20/2007	4 1/2	11.60	M-80	12.0	6,901.9

Cement

Description	Top Depth (ftKB)	Bottom Depth (ftKB)
Surface Casing Cement	12.0	482.0
Production Casing Cement	1,756.0	6,901.9

Tubing Strings

Tubing Description	Run Date	String...	ID (in)	Wt (lb/ft)	Grade	Len (ft)	Set De...
Tubing - Production	6/23/2008	2 3/8	2.00	4.70	J-55	6,673.77	

Tubing Components

Item Des	OD (in)	Wt (lb/ft)	Grade	Jts	Len (ft)	Btm (ftKB)	Btm (TVD) (ftKB)
Tubing Pup Joint	2 3/8	4.70	J-55	2	20.00	30.0	
Tubing	2 3/8	4.70	J-55	215	6,652.37	6,682.4	
Pump Seating Nipple	2 3/8			1	1.10	6,683.5	
Notched collar	3 1/16			1	0.30	6,683.8	

Other In Hole

Run Date	Des	OD (in)	Top (ftKB)	Btm (ftKB)
6/26/2013	Stage Tool	2	3,992.0	3,997.0

Logs

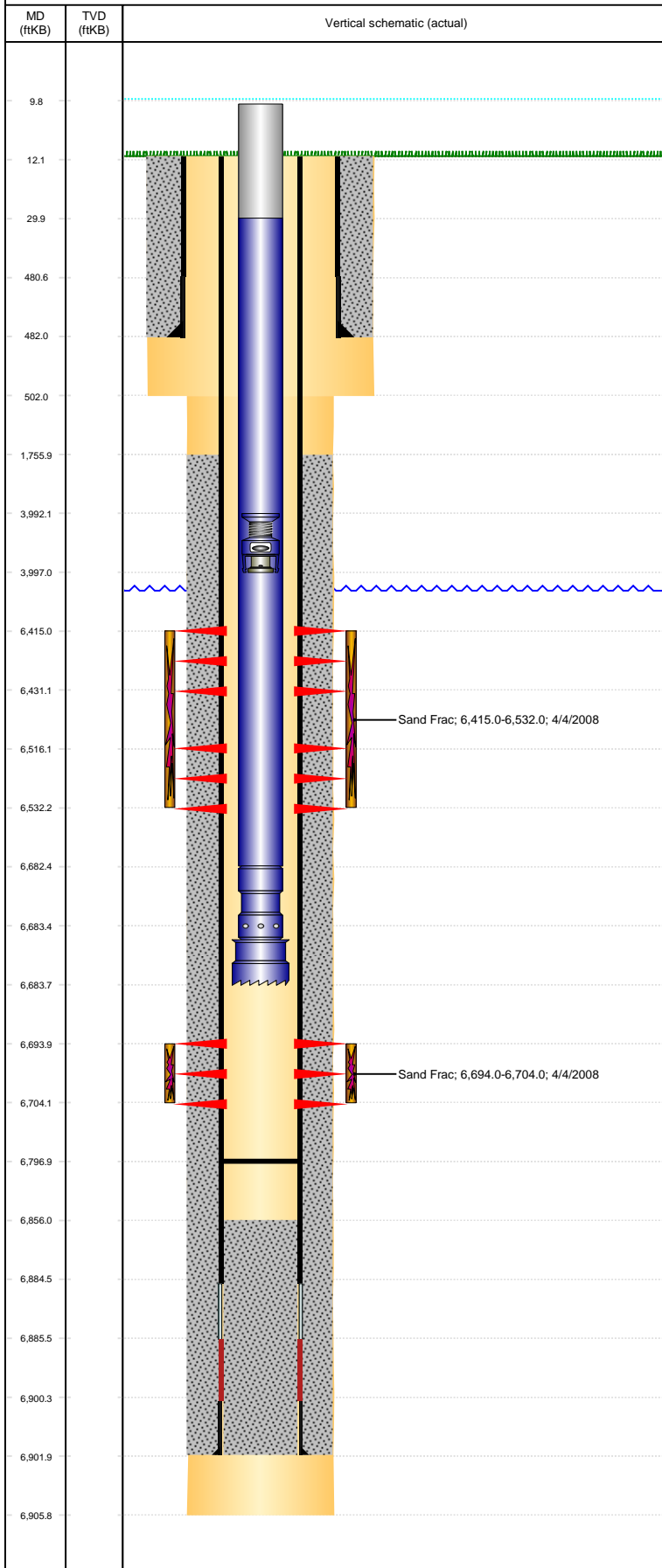
Date	Type	Top, MD (ftKB)	Btm, MD (ftKB)
9/20/2007	COMPENSATED DENSITY	2,490.0	6,884.0
9/20/2007	INDUCTION	482.0	6,904.0
10/18/2007	CBL/CCL/GR	1,640.0	6,854.0
8/5/2016	GYRO	0.0	6,600.0

Perforation Data

Linked Zone	Bnch/St g	Sum of Entered Shot Total	Top (ftKB)	Btm (ftKB)	Date
NIOBRARA, ORIGINAL HOLE	A	64	6,415.00	6,431.00	4/4/2008
NIOBRARA, ORIGINAL HOLE	B	64	6,516.00	6,532.00	4/4/2008
CODELL, ORIGINAL HOLE		40	6,694.00	6,704.00	2/15/2008

Well Name: WELLS RANCH USX BB03-14

VERTICAL - ORIGINAL HOLE, 3/23/2017 2:29:43 PM



Perforation Data					
Linked Zone	Bnch/St g	Sum of Entered Shot Total	Top (ftKB)	Btm (ftKB)	Date
Total (Sum)		168			
Stimulation Intervals					
Interval... 1	Start Date 4/4/2008	Primary Job Type DRILLING/COMPLETION - ORIGINAL		Zone CODELL, ORIGINAL HOLE	
Technical Result Success		Tech Result Details According to Plan		Tech Result Note	
Comment					
Interval... 2	Start Date 4/4/2008	Primary Job Type DRILLING/COMPLETION - ORIGINAL		Zone NIOBRARA, ORIGINAL HOLE	
Technical Result Success		Tech Result Details According to Plan		Tech Result Note	
Comment					