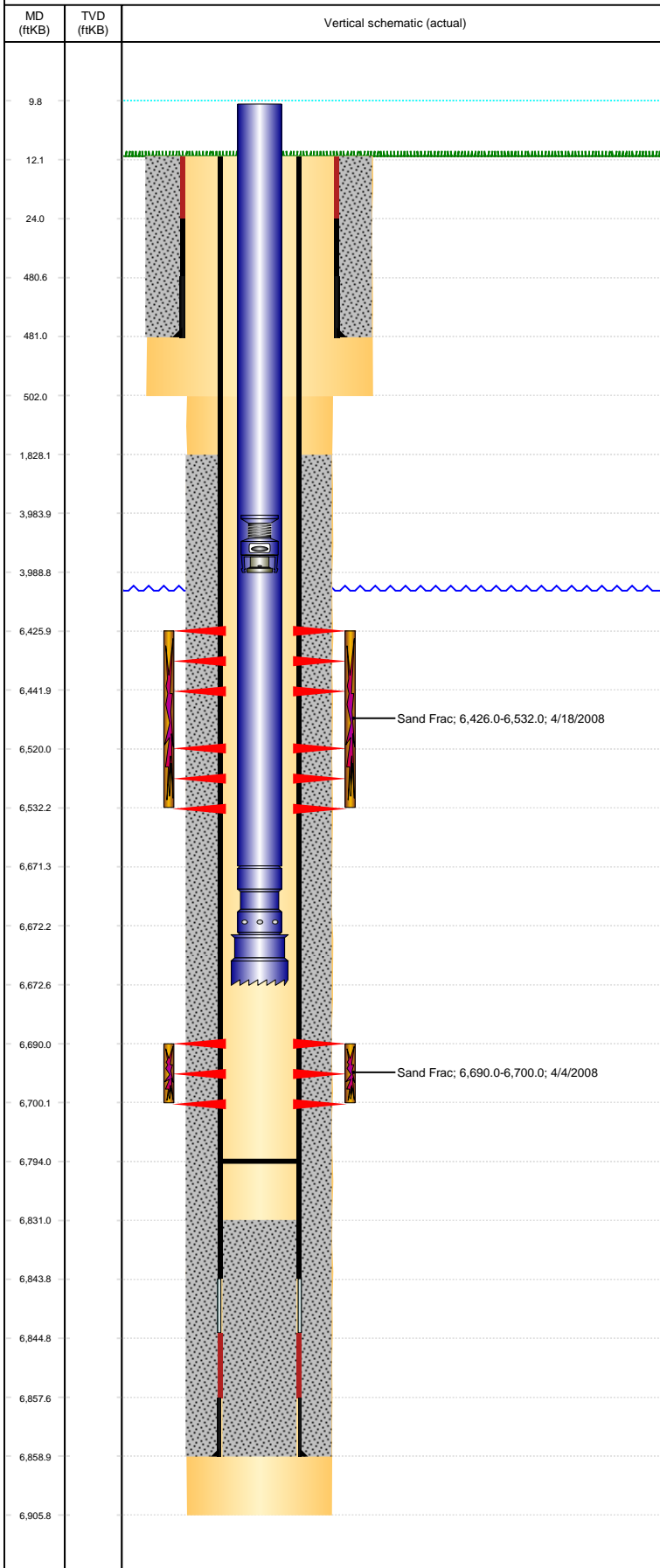


**Well Name: WELLS RANCH USX BB03-11**

VERTICAL - ORIGINAL HOLE, 3/23/2017 2:28:38 PM



## Well Header

API 05-123-26275	Business Unit DJ BASIN	District 15	Well Config VERTICAL
Original KB Elevation (ft) 4,722	KB - GL / MSL (ftKB) 12.00	Spud Date 9/17/2007	P & A Date

Comment  
REPORTING DISCREPANCIES: WELL HAS 2 SETS OF DRILL REPORTS;  
SPUD DATES REPORTED 9/17/07 & 9/25/07, TD REPORTED 6785' & 6906',  
PROD CSG SET DEPTHS REPORTED 6859' & 6767'  
UNABLE TO FIND REASON IN STATE RECORDS OR WELL FILE REPORTS

Directions To Well  
WCR 67 & WCR 68, E 0.1, S TO COW CAMP, SW 0.5, S 0.7, E 0.1, NE 0.2 INTO  
LOCATION.

## Congressional Location

Quarter 3 NE	Quarter 4 SW	Section 3	Township 5	Twntshp N/S Dir N	Range 63	Range E/W Dir W
-----------------	-----------------	--------------	---------------	----------------------	-------------	--------------------

## Bottom Hole Location

North-South Distance (ft)	From N or S Line	East-West Distance (ft)	From E or W Line
---------------------------	------------------	-------------------------	------------------

## Plug Back Total Depths

Date	Depth (ftKB)	Method	Com
9/29/2007	6,843.7	CASING TALLY	TOP OF FLOAT COLLAR
10/8/2007	6,831.0	CASED HOLE LOG	DEPTH LOGGER ON CBL
4/15/2008	6,794.0	TAG	DRILL CIFTF PLUGS AND CHASE TO 6794'

## Wellbore Sections

Section Des	Size (in)	Act Top, MD (ftKB)	Act Btm, MD (ftKB)
SURFACE	12 1/4	12	502
PRODUCTION	7 7/8	502	6,906

## Zone Statuses

Zone Name	Status Date	Status	Fluid Type	Job	Prod Method
CODELL	4/16/2008	SI		DRILLING/CO...	
CODELL	6/18/2008	PR		DRILLING/CO...	
NIORARA	4/19/2008	PR		DRILLING/CO...	

## Casing Strings

### Surface, 481.0ftKB

Casing Description	Run Date	OD (in)	Wt/Len (l...)	Grade	Top, MD (ft...)	MD (ftKB)
Surface	9/19/2007	8 5/8	24.00	J55	12.0	481.0

### Production, 6,859.1ftKB

Casing Description	Run Date	OD (in)	Wt/Len (l...)	Grade	Top, MD (ft...)	MD (ftKB)
Production	9/29/2007	4 1/2	11.60	M-80	12.0	6,859.1

## Cement

Description	Top Depth (ftKB)	Bottom Depth (ftKB)
SURFACE CASING CEMENT	12.0	481.0

Description	Top Depth (ftKB)	Bottom Depth (ftKB)
PRODUCTION CASING CEMENT	1,828.0	6,859.1

## Tubing Strings

Tubing Description	Run Date	String...	ID (in)	Wt (lb/ft)	Grade	Len (ft)	Set De...
Tubing - Production	6/18/2008	2 3/8	2.00	4.70	J-55	6,662.59	

## Tubing Components

Item Des	OD (in)	Wt (lb/ft)	Grade	Jts	Len (ft)	Btm (ftKB)	Btm (TVD) (ftKB)
Tubing	2 3/8	4.70	J-55	215	6,661.19	6,671.2	
Pump Seating Nipple	2 3/8			1	1.10	6,672.3	
Notched collar	3 1/16			1	0.30	6,672.6	

## Other In Hole

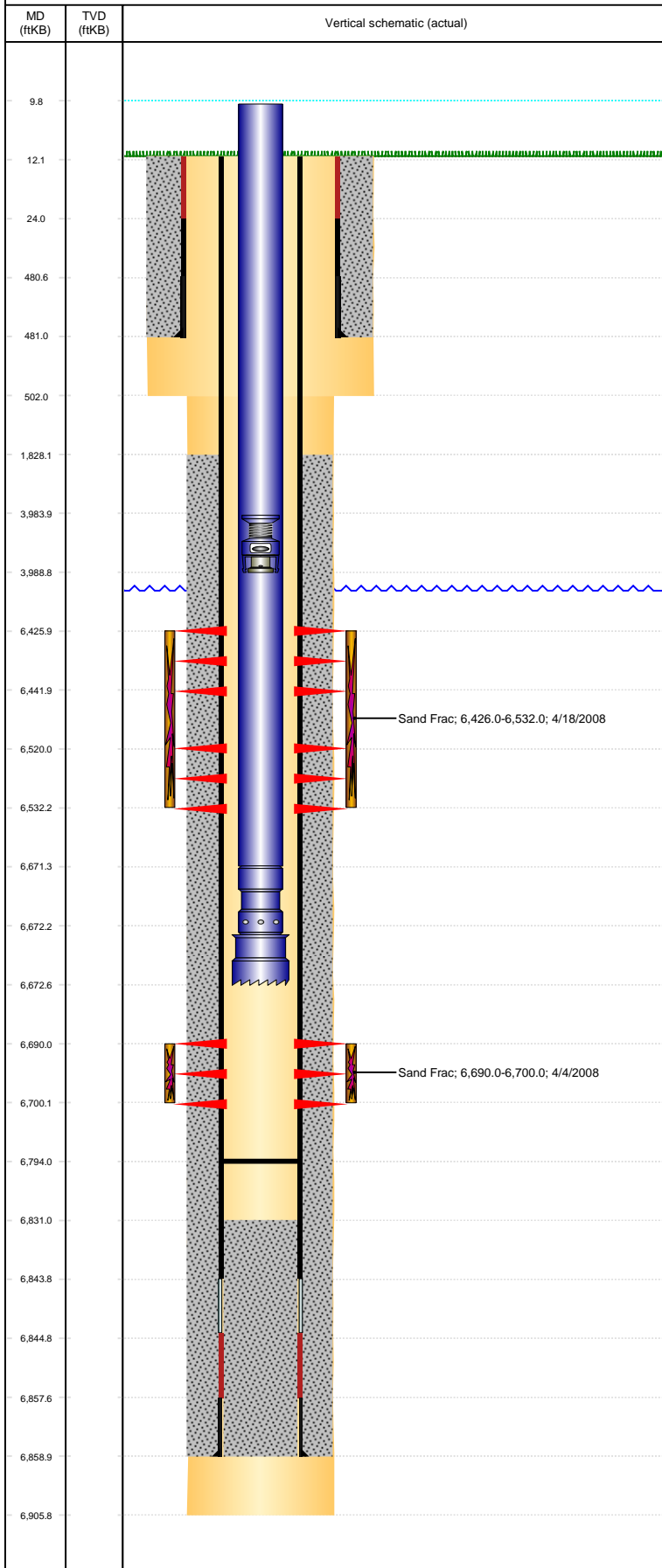
Run Date	Des	OD (in)	Top (ftKB)	Btm (ftKB)
6/13/2013	Stage Tool	2	3,984.0	3,989.0

## Logs

Date	Type	Top, MD (ftKB)	Btm, MD (ftKB)
9/30/2007	COMPENSATED DENSITY	481.0	6,832.0
9/30/2007	INDUCTION	481.0	6,852.0
10/8/2007	CBL/CCL/GR	1,700.0	6,824.0
8/5/2016	GYRO	0.0	6,600.0

**Well Name: WELLS RANCH USX BB03-11**

VERTICAL - ORIGINAL HOLE, 3/23/2017 2:28:40 PM



Perforation Data					
Linked Zone	Bnch/St g	Sum of Entered Shot Total	Top (ftKB)	Btm (ftKB)	Date
NIOBRARA, ORIGINAL HOLE	A	64	6,426.00	6,442.00	4/17/2008
NIOBRARA, ORIGINAL HOLE	B	48	6,520.00	6,532.00	4/17/2008
CODELL, ORIGINAL HOLE		40	6,690.00	6,700.00	10/15/2007
Total (Sum)		152			
Stimulation Intervals					
Interval... 1	Start Date 4/4/2008	Primary Job Type DRILLING/COMPLETION - ORIGINAL		Zone CODELL, ORIGINAL HOLE	
Technical Result Success		Tech Result Details According to Plan		Tech Result Note	
Comment FRAC THE CODELL - NO PROBLEMS TO REPORT					
Interval... 2	Start Date 4/18/2008	Primary Job Type DRILLING/COMPLETION - ORIGINAL		Zone NIOBRARA, ORIGINAL HOLE	
Technical Result Success		Tech Result Details According to Plan		Tech Result Note	
Comment NIOBRARA RE-COMPLETE. PRE- ISIP (125 BBL) = 3109 PSI, 5-MIN = 2882 PSI. EARLY WET SAND ISSUES. PRESSURE RESPONSE WAS FLAT THROUGHOUT. POST- ISIP = 3293 PSI, 5-MIN = 3179 PSI. TURN ON IN 19 MINUTES ON A 20/64 CHOKE WITH 3000 PSI					