

EXTRACTION OIL & GAS

WELD COUNTY, COLORADO (NAD 83)

NE SE SEC. 26 T5N R68W 6th P.M.

MCGIRR 6C

ORIGINAL WELLBORE

23 March, 2017

Plan: PROPOSAL #2

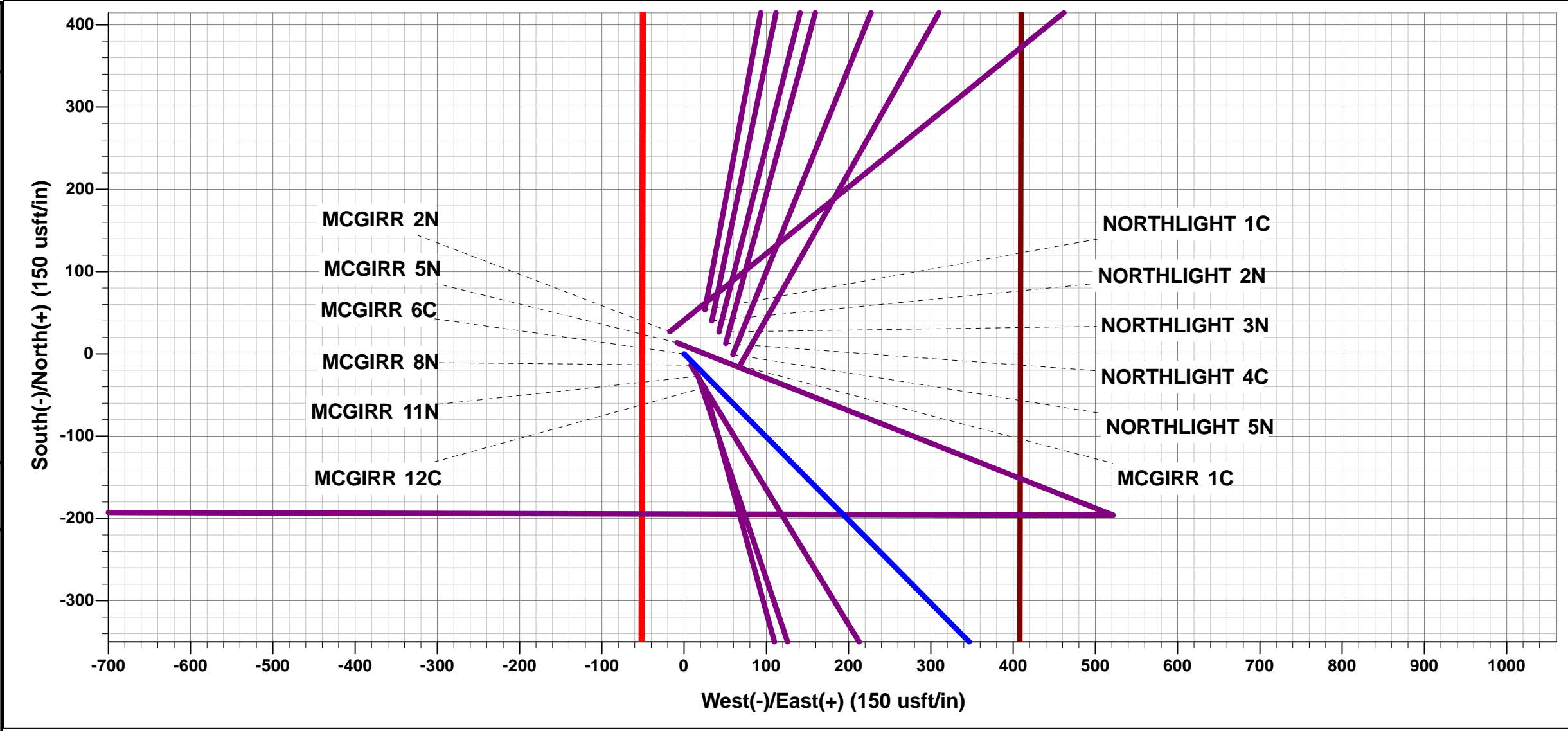




Project: WELD COUNTY, COLORADO (NAD 83)
Site: NE SE SEC. 26 T5N R68W 6th P.M.
Well: MCGIRR 6C
Wellbore: ORIGINAL WELLBORE
Design: PROPOSAL #2

ANNOTATIONS								
TVD	MD	Inc	Azi	+N/-S	+E/-W	VSec	Dep	Annotation
0.0	0.0	0.00	0.00	0.0	0.0	0.0	0.0	SHL: 1998ft FSL & 409ft FEL of Sec 26
400.0	400.0	0.00	0.00	0.0	0.0	0.0	0.0	START NUDGE (2°/100ft BUR)
995.6	1000.0	12.00	135.28	-44.5	44.0	-41.7	62.6	EOB TO 12° INC
3889.4	3958.4	12.00	135.28	-481.6	476.9	-451.4	677.7	END OF TANGENT
4485.0	4558.4	0.00	135.28	-526.1	520.9	-493.1	740.3	EOD TO VERTICAL
6567.0	6640.4	0.00	0.00	-526.1	520.9	-493.1	740.3	KOP (10°/100ft BUR)
7140.0	7540.5	90.00	270.15	-524.6	-52.1	79.1	1313.4	HZ LP: 1474ft FSL & 460ft FEL of Sec 26
7140.0	17151.9	90.00	270.16	-498.6	-9663.4	9676.3	10924.7	BHL: 1484ft FSL & 460ft FWL of Sec 27

WELLBORE TARGET DETAILS (LAT/LONG)					
Name	TVD	+N/-S	+E/-W	Latitude	Longitude
KOP - MCGIRR 6C (P2)	6567.0	-526.1	520.9	40.367700	-104.964292
HZ LP - MCGIRR 6C (P2)	7140.0	-524.6	-52.1	40.367704	-104.966348
BHL - MCGIRR 6C (P2)	7140.0	-498.6	-9663.4	40.367770	-105.000840



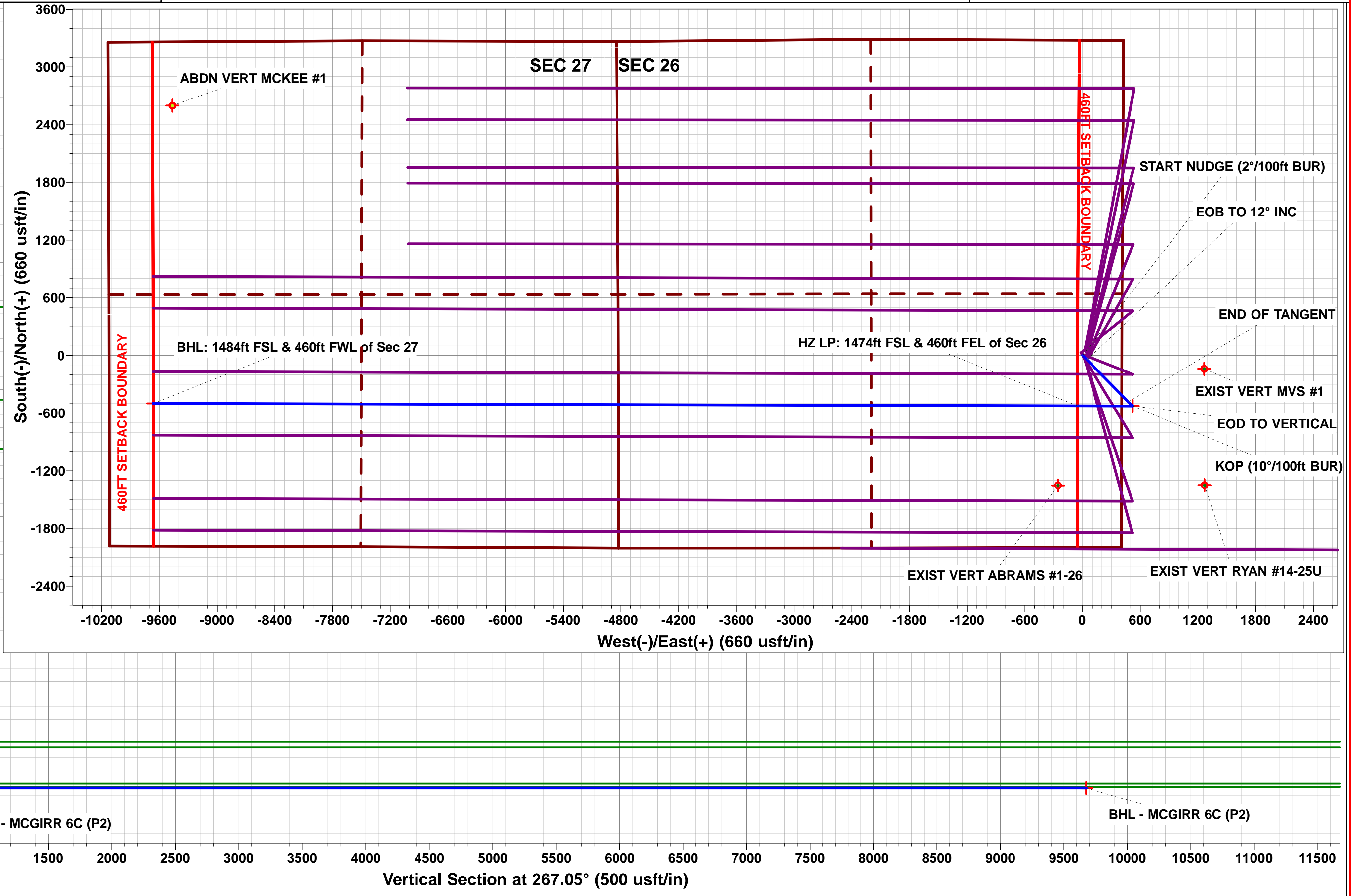
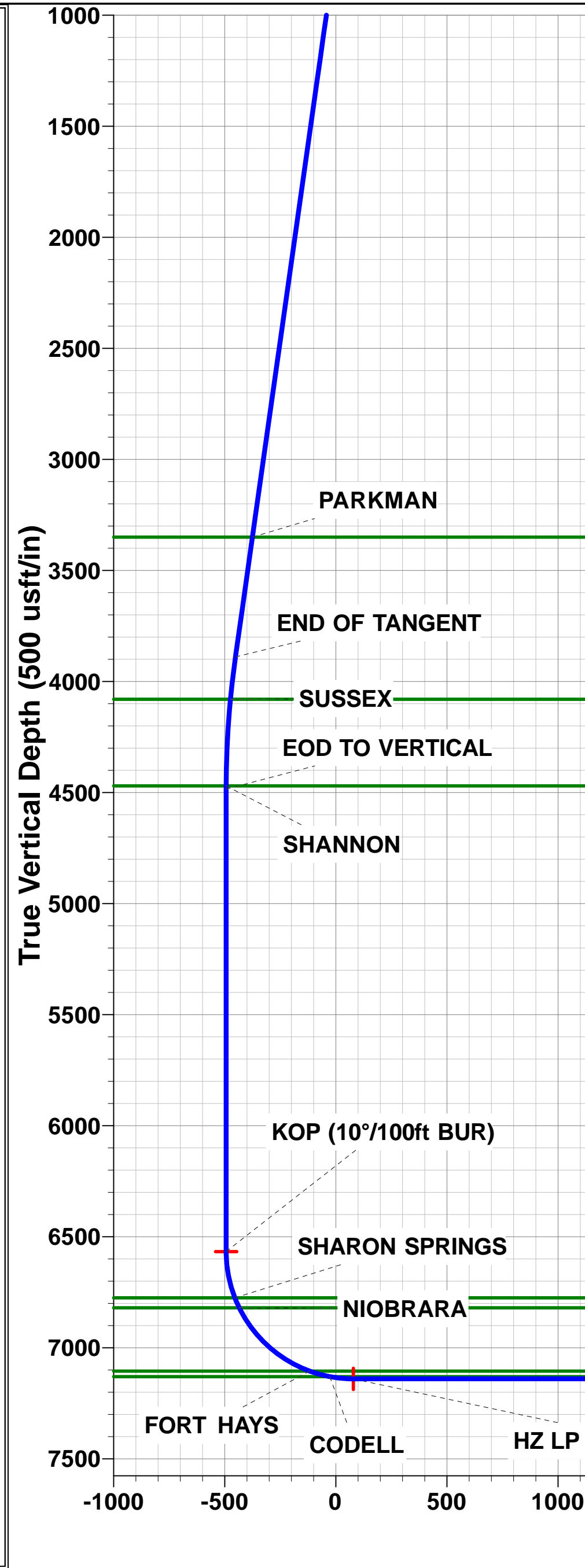
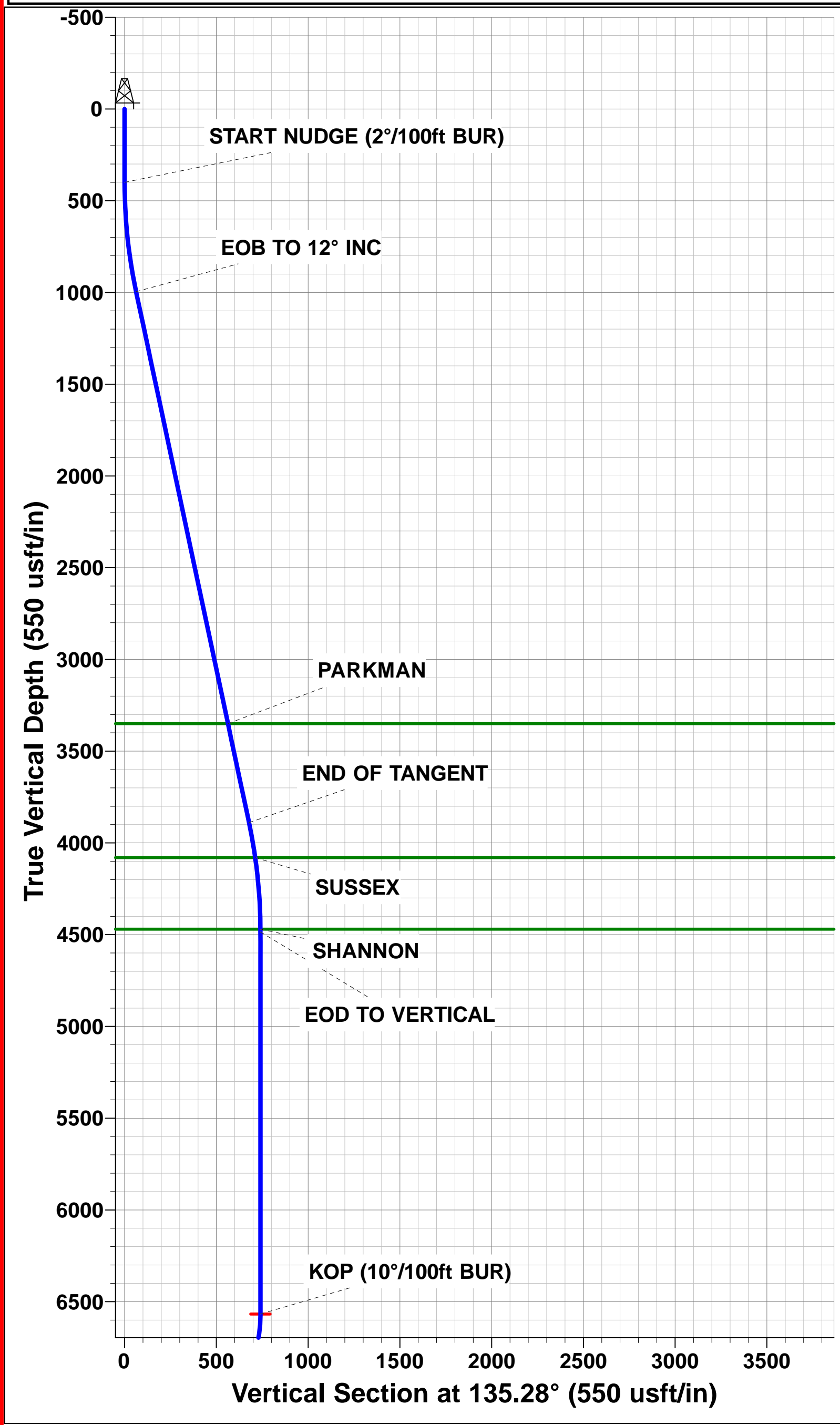
FORMATION TOP DETAILS		
TVDPath	MDPath	Formation
3350.0	3407.0	PARKMAN
4080.0	4152.1	SUSSEX
4470.0	4543.4	SHANNON
6775.0	6853.3	SHARON SPRINGS
6820.0	6902.5	NIOBRARA
7105.0	7339.2	FORT HAYS
7130.0	7433.3	CODELL

PROPOSED LOCAL COORDINATES		
SHL: 1998ft FSL & 409ft FEL of Sec 26		
LP: 1474ft FSL & 460ft FEL of Sec 26		
BHL: 1484ft FSL & 460ft FWL of Sec 27		

T
M

Azimuths to True North
Magnetic North: 8.34°

Magnetic Field
Strength: 52380.9snT
Dip Angle: 66.80°
Date: 23/03/2017
Model: IGRF2015



Planning Report



Database:	EDM 5000.1 Single User Db	Local Co-ordinate Reference:	Well MCGIRR 6C
Company:	EXTRACTION OIL & GAS	TVD Reference:	KB-EST @ 4961.0usft
Project:	WELD COUNTY, COLORADO (NAD 83)	MD Reference:	KB-EST @ 4961.0usft
Site:	NE SE SEC. 26 T5N R68W 6th P.M.	North Reference:	True
Well:	MCGIRR 6C	Survey Calculation Method:	Minimum Curvature
Wellbore:	ORIGINAL WELLBORE		
Design:	PROPOSAL #2		

Project	WELD COUNTY, COLORADO (NAD 83)		
Map System:	US State Plane 1983	System Datum:	Mean Sea Level
Geo Datum:	North American Datum 1983		
Map Zone:	Colorado Northern Zone		Using geodetic scale factor

Site	NE SE SEC. 26 T5N R68W 6th P.M.		
Site Position:		Northing:	1,377,688.13 usft
From:	Lat/Long	Easting:	3,148,767.00 usft
Position Uncertainty:	0.0 usft	Slot Radius:	1.10000ft
		Latitude:	40.368926
		Longitude:	-104.966089
		Grid Convergence:	0.34 °

Well	MCGIRR 6C		
Well Position	+N/-S	79.4 usft	Northing:
	+E/-W	-20.1 usft	Easting:
Position Uncertainty	0.0 usft		Wellhead Elevation:
			Latitude:
			Longitude:
			Ground Level:

Wellbore	ORIGINAL WELLBORE				
Magnetics	Model Name	Sample Date	Declination (°)	Dip Angle (°)	Field Strength (nT)
	IGRF2015	23/03/2017	8.34	66.80	52,381

Design	PROPOSAL #2			
Audit Notes:				
Version:	Phase:	PROTOTYPE	Tie On Depth:	0.0
Vertical Section:	Depth From (TVD) (usft)	+N/-S (usft)	+E/-W (usft)	Direction (°)
	7,140.0	0.0	0.0	267.05

Plan Sections											
MD (usft)	Inc (°)	Azi (°)	Vertical Depth	SS (usft)	+N/-S (usft)	+E/-W (usft)	Dogleg Rate (°/100usft)	Build Rate (°/100usft)	Turn Rate (°/100usft)	TFO (°)	Target
0.0	0.00	0.00	0.0	-4,961.0	0.0	0.0	0.00	0.00	0.00	0.00	
400.0	0.00	0.00	400.0	-4,561.0	0.0	0.0	0.00	0.00	0.00	0.00	
1,000.0	12.00	135.28	995.7	-3,965.3	-44.5	44.1	2.00	2.00	0.00	135.28	
3,958.4	12.00	135.28	3,889.3	-1,071.7	-481.6	476.9	0.00	0.00	0.00	0.00	
4,558.4	0.00	0.00	4,485.0	-476.0	-526.1	520.9	2.00	-2.00	0.00	180.00	
6,640.4	0.00	0.00	6,567.0	1,606.0	-526.1	520.9	0.00	0.00	0.00	0.00	KOP - MCGIRR 6C
7,540.5	90.00	270.15	7,140.0	2,179.0	-524.6	-52.1	10.00	10.00	-9.98	270.15	HZ LP - MCGIRR 6
17,151.9	90.00	270.16	7,140.0	2,179.0	-498.6	-9,663.4	0.00	0.00	0.00	111.96	BHL - MCGIRR 6C

Database:	EDM 5000.1 Single User Db	Local Co-ordinate Reference:	Well MCGIRR 6C
Company:	EXTRACTION OIL & GAS	TVD Reference:	KB-EST @ 4961.0usft
Project:	WELD COUNTY, COLORADO (NAD 83)	MD Reference:	KB-EST @ 4961.0usft
Site:	NE SE SEC. 26 T5N R68W 6th P.M.	North Reference:	True
Well:	MCGIRR 6C	Survey Calculation Method:	Minimum Curvature
Wellbore:	ORIGINAL WELLBORE		
Design:	PROPOSAL #2		

Planned Survey

MD (usft)	Inc (°)	Azi (°)	TVD (usft)	SS (usft)	+N/-S (usft)	+E/-W (usft)	Vertical Section (usft)	Dogleg Rate (°/100usft)	Build Rate (°/100usft)	Turn Rate (°/100usft)
SHL: 1998ft FSL & 409ft FEL of Sec 26										
0.0	0.00	0.00	0.0	4,961.00	0.0	0.0	0.0	0.00	0.00	0.00
100.0	0.00	0.00	100.0	4,861.00	0.0	0.0	0.0	0.00	0.00	0.00
200.0	0.00	0.00	200.0	4,761.00	0.0	0.0	0.0	0.00	0.00	0.00
300.0	0.00	0.00	300.0	4,661.00	0.0	0.0	0.0	0.00	0.00	0.00
START NUDGE (2°/100ft BUR)										
400.0	0.00	0.00	400.0	4,561.00	0.0	0.0	0.0	0.00	0.00	0.00
500.0	2.00	135.28	500.0	4,461.02	-1.2	1.2	-1.2	2.00	2.00	0.00
600.0	4.00	135.28	599.8	4,361.16	-5.0	4.9	-4.6	2.00	2.00	0.00
700.0	6.00	135.28	699.5	4,261.55	-11.2	11.0	-10.5	2.00	2.00	0.00
800.0	8.00	135.28	798.7	4,162.30	-19.8	19.6	-18.6	2.00	2.00	0.00
900.0	10.00	135.28	897.5	4,063.53	-30.9	30.6	-29.0	2.00	2.00	0.00
EOB TO 12° INC										
1,000.0	12.00	135.28	995.6	3,965.38	-44.5	44.0	-41.7	2.00	2.00	0.00
1,100.0	12.00	135.28	1,093.4	3,867.56	-59.3	58.7	-55.5	0.00	0.00	0.00
1,200.0	12.00	135.28	1,191.3	3,769.75	-74.0	73.3	-69.4	0.00	0.00	0.00
1,300.0	12.00	135.28	1,289.1	3,671.93	-88.8	87.9	-83.2	0.00	0.00	0.00
1,400.0	12.00	135.28	1,386.9	3,574.12	-103.6	102.6	-97.1	0.00	0.00	0.00
1,500.0	12.00	135.28	1,484.7	3,476.30	-118.4	117.2	-110.9	0.00	0.00	0.00
1,600.0	12.00	135.28	1,582.5	3,378.49	-133.1	131.8	-124.8	0.00	0.00	0.00
1,700.0	12.00	135.28	1,680.3	3,280.68	-147.9	146.5	-138.6	0.00	0.00	0.00
1,800.0	12.00	135.28	1,778.1	3,182.86	-162.7	161.1	-152.5	0.00	0.00	0.00
1,900.0	12.00	135.28	1,876.0	3,085.05	-177.5	175.7	-166.3	0.00	0.00	0.00
2,000.0	12.00	135.28	1,973.8	2,987.23	-192.2	190.3	-180.2	0.00	0.00	0.00
2,100.0	12.00	135.28	2,071.6	2,889.42	-207.0	205.0	-194.0	0.00	0.00	0.00
2,200.0	12.00	135.28	2,169.4	2,791.60	-221.8	219.6	-207.9	0.00	0.00	0.00
2,300.0	12.00	135.28	2,267.2	2,693.79	-236.6	234.2	-221.7	0.00	0.00	0.00
2,400.0	12.00	135.28	2,365.0	2,595.98	-251.3	248.9	-235.6	0.00	0.00	0.00
2,500.0	12.00	135.28	2,462.8	2,498.16	-266.1	263.5	-249.4	0.00	0.00	0.00
2,600.0	12.00	135.28	2,560.7	2,400.35	-280.9	278.1	-263.3	0.00	0.00	0.00
2,700.0	12.00	135.28	2,658.5	2,302.53	-295.7	292.8	-277.1	0.00	0.00	0.00
2,800.0	12.00	135.28	2,756.3	2,204.72	-310.4	307.4	-291.0	0.00	0.00	0.00
2,900.0	12.00	135.28	2,854.1	2,106.90	-325.2	322.0	-304.8	0.00	0.00	0.00
3,000.0	12.00	135.28	2,951.9	2,009.09	-340.0	336.6	-318.7	0.00	0.00	0.00
3,100.0	12.00	135.28	3,049.7	1,911.27	-354.8	351.3	-332.5	0.00	0.00	0.00
3,200.0	12.00	135.28	3,147.5	1,813.46	-369.5	365.9	-346.4	0.00	0.00	0.00
3,300.0	12.00	135.28	3,245.4	1,715.65	-384.3	380.5	-360.2	0.00	0.00	0.00
3,400.0	12.00	135.28	3,343.2	1,617.83	-399.1	395.2	-374.1	0.00	0.00	0.00
PARKMAN										
3,407.0	12.00	135.28	3,350.0	1,611.00	-400.1	396.2	-375.0	0.00	0.00	0.00
3,500.0	12.00	135.28	3,441.0	1,520.02	-413.9	409.8	-387.9	0.00	0.00	0.00
3,600.0	12.00	135.28	3,538.8	1,422.20	-428.6	424.4	-401.8	0.00	0.00	0.00
3,700.0	12.00	135.28	3,636.6	1,324.39	-443.4	439.1	-415.6	0.00	0.00	0.00
3,800.0	12.00	135.28	3,734.4	1,226.57	-458.2	453.7	-429.5	0.00	0.00	0.00
3,900.0	12.00	135.28	3,832.2	1,128.76	-473.0	468.3	-443.3	0.00	0.00	0.00
END OF TANGENT										
3,958.4	12.00	135.28	3,889.4	1,071.64	-481.6	476.9	-451.4	0.00	0.00	0.00
4,000.0	11.17	135.28	3,930.1	1,030.88	-487.5	482.7	-457.0	2.00	-2.00	0.00
4,100.0	9.17	135.28	4,028.5	932.46	-500.1	495.2	-468.7	2.00	-2.00	0.00
SUSSEX										
4,152.1	8.13	135.28	4,080.0	881.00	-505.6	500.7	-473.9	2.00	-2.00	0.00
4,200.0	7.17	135.28	4,127.5	833.48	-510.2	505.2	-478.2	2.00	-2.00	0.00
4,300.0	5.17	135.28	4,226.9	734.06	-517.8	512.7	-485.3	2.00	-2.00	0.00

Database:	EDM 5000.1 Single User Db	Local Co-ordinate Reference:	Well MCGIRR 6C
Company:	EXTRACTION OIL & GAS	TVD Reference:	KB-EST @ 4961.0usft
Project:	WELD COUNTY, COLORADO (NAD 83)	MD Reference:	KB-EST @ 4961.0usft
Site:	NE SE SEC. 26 T5N R68W 6th P.M.	North Reference:	True
Well:	MCGIRR 6C	Survey Calculation Method:	Minimum Curvature
Wellbore:	ORIGINAL WELLBORE		
Design:	PROPOSAL #2		

Planned Survey

MD (usft)	Inc (°)	Azi (°)	TVD (usft)	SS (usft)	+N/-S (usft)	+E/-W (usft)	Vertical Section (usft)	Dogleg Rate (°/100usft)	Build Rate (°/100usft)	Turn Rate (°/100usft)
4,400.0	3.17	135.28	4,326.7	634.33	-523.0	517.8	-490.2	2.00	-2.00	0.00
4,500.0	1.17	135.28	4,426.6	534.41	-525.7	520.5	-492.7	2.00	-2.00	0.00
SHANNON										
4,543.4	0.30	135.28	4,470.0	491.00	-526.1	520.9	-493.1	2.00	-2.00	0.00
EOD TO VERTICAL										
4,558.4	0.00	135.28	4,485.0	476.01	-526.1	520.9	-493.1	2.00	-2.00	0.00
4,600.0	0.00	0.00	4,526.6	434.41	-526.1	520.9	-493.1	0.00	0.00	0.00
4,700.0	0.00	0.00	4,626.6	334.41	-526.1	520.9	-493.1	0.00	0.00	0.00
4,800.0	0.00	0.00	4,726.6	234.41	-526.1	520.9	-493.1	0.00	0.00	0.00
4,900.0	0.00	0.00	4,826.6	134.41	-526.1	520.9	-493.1	0.00	0.00	0.00
5,000.0	0.00	0.00	4,926.6	34.41	-526.1	520.9	-493.1	0.00	0.00	0.00
5,100.0	0.00	0.00	5,026.6	-65.59	-526.1	520.9	-493.1	0.00	0.00	0.00
5,200.0	0.00	0.00	5,126.6	-165.59	-526.1	520.9	-493.1	0.00	0.00	0.00
5,300.0	0.00	0.00	5,226.6	-265.59	-526.1	520.9	-493.1	0.00	0.00	0.00
5,400.0	0.00	0.00	5,326.6	-365.59	-526.1	520.9	-493.1	0.00	0.00	0.00
5,500.0	0.00	0.00	5,426.6	-465.59	-526.1	520.9	-493.1	0.00	0.00	0.00
5,600.0	0.00	0.00	5,526.6	-565.59	-526.1	520.9	-493.1	0.00	0.00	0.00
5,700.0	0.00	0.00	5,626.6	-665.59	-526.1	520.9	-493.1	0.00	0.00	0.00
5,800.0	0.00	0.00	5,726.6	-765.59	-526.1	520.9	-493.1	0.00	0.00	0.00
5,900.0	0.00	0.00	5,826.6	-865.59	-526.1	520.9	-493.1	0.00	0.00	0.00
6,000.0	0.00	0.00	5,926.6	-965.59	-526.1	520.9	-493.1	0.00	0.00	0.00
6,100.0	0.00	0.00	6,026.6	-1,065.59	-526.1	520.9	-493.1	0.00	0.00	0.00
6,200.0	0.00	0.00	6,126.6	-1,165.59	-526.1	520.9	-493.1	0.00	0.00	0.00
6,300.0	0.00	0.00	6,226.6	-1,265.59	-526.1	520.9	-493.1	0.00	0.00	0.00
6,400.0	0.00	0.00	6,326.6	-1,365.59	-526.1	520.9	-493.1	0.00	0.00	0.00
6,500.0	0.00	0.00	6,426.6	-1,465.59	-526.1	520.9	-493.1	0.00	0.00	0.00
6,600.0	0.00	0.00	6,526.6	-1,565.59	-526.1	520.9	-493.1	0.00	0.00	0.00
KOP (10°/100ft BUR)										
6,640.4	0.00	0.00	6,567.0	-1,605.99	-526.1	520.9	-493.1	0.00	0.00	0.00
6,700.0	5.96	270.15	6,626.5	-1,665.48	-526.1	517.8	-490.0	10.00	10.00	0.00
6,800.0	15.96	270.15	6,724.5	-1,763.53	-526.0	498.8	-471.1	10.00	10.00	0.00
SHARON SPRINGS										
6,853.3	21.28	270.15	6,775.0	-1,814.00	-526.0	481.8	-454.1	10.00	10.00	0.00
6,900.0	25.96	270.15	6,817.8	-1,856.80	-525.9	463.1	-435.4	10.00	10.00	0.00
NIOBRARA										
6,902.5	26.20	270.15	6,820.0	-1,859.00	-525.9	462.0	-434.3	10.00	10.00	0.00
7,000.0	35.96	270.15	6,903.4	-1,942.45	-525.8	411.7	-384.1	10.00	10.00	0.00
7,100.0	45.96	270.15	6,978.9	-2,017.87	-525.6	346.3	-318.7	10.00	10.00	0.00
7,200.0	55.95	270.15	7,041.8	-2,080.78	-525.4	268.7	-241.3	10.00	10.00	0.00
7,300.0	65.95	270.15	7,090.3	-2,129.27	-525.2	181.4	-154.1	10.00	10.00	0.00
FORT HAYS										
7,339.2	69.87	270.15	7,105.0	-2,144.00	-525.1	145.1	-117.8	10.00	10.00	0.00
7,400.0	75.95	270.15	7,122.9	-2,161.87	-524.9	87.0	-59.8	10.00	10.00	0.00
CODELL										
7,433.3	79.28	270.15	7,130.0	-2,169.00	-524.9	54.5	-27.4	10.00	10.00	0.00
7,500.0	85.95	270.15	7,138.6	-2,177.57	-524.7	-11.6	38.7	10.00	10.00	0.00
HZ LP: 1474ft FSL & 460ft FEL of Sec 26										
7,540.5	90.00	270.15	7,140.0	-2,179.00	-524.6	-52.1	79.1	10.00	10.00	0.00
7,600.0	90.00	270.15	7,140.0	-2,179.00	-524.4	-111.6	138.5	0.00	0.00	0.00
7,700.0	90.00	270.15	7,140.0	-2,178.99	-524.2	-211.6	238.3	0.00	0.00	0.00
7,800.0	90.00	270.15	7,140.0	-2,178.99	-523.9	-311.6	338.2	0.00	0.00	0.00
7,900.0	90.00	270.15	7,140.0	-2,178.99	-523.6	-411.6	438.0	0.00	0.00	0.00
8,000.0	90.00	270.15	7,140.0	-2,178.99	-523.4	-511.6	537.9	0.00	0.00	0.00

Planning Report



Database:	EDM 5000.1 Single User Db	Local Co-ordinate Reference:	Well MCGIRR 6C
Company:	EXTRACTION OIL & GAS	TVD Reference:	KB-EST @ 4961.0usft
Project:	WELD COUNTY, COLORADO (NAD 83)	MD Reference:	KB-EST @ 4961.0usft
Site:	NE SE SEC. 26 T5N R68W 6th P.M.	North Reference:	True
Well:	MCGIRR 6C	Survey Calculation Method:	Minimum Curvature
Wellbore:	ORIGINAL WELLBORE		
Design:	PROPOSAL #2		

Planned Survey										
MD (usft)	Inc (°)	Azi (°)	TVD (usft)	SS (usft)	+N/-S (usft)	+E/-W (usft)	Vertical Section (usft)	Dogleg Rate (°/100usft)	Build Rate (°/100usft)	Turn Rate (°/100usft)
8,100.0	90.00	270.15	7,140.0	-2,178.98	-523.1	-611.6	637.8	0.00	0.00	0.00
8,200.0	90.00	270.15	7,140.0	-2,178.98	-522.9	-711.6	737.6	0.00	0.00	0.00
8,300.0	90.00	270.15	7,140.0	-2,178.98	-522.6	-811.6	837.5	0.00	0.00	0.00
8,400.0	90.00	270.15	7,140.0	-2,178.97	-522.3	-911.6	937.3	0.00	0.00	0.00
8,500.0	90.00	270.15	7,140.0	-2,178.97	-522.1	-1,011.6	1,037.2	0.00	0.00	0.00
8,600.0	90.00	270.15	7,140.0	-2,178.97	-521.8	-1,111.6	1,137.0	0.00	0.00	0.00
8,700.0	90.00	270.15	7,140.0	-2,178.97	-521.5	-1,211.6	1,236.9	0.00	0.00	0.00
8,800.0	90.00	270.15	7,140.0	-2,178.96	-521.3	-1,311.6	1,336.7	0.00	0.00	0.00
8,900.0	90.00	270.15	7,140.0	-2,178.96	-521.0	-1,411.6	1,436.6	0.00	0.00	0.00
9,000.0	90.00	270.15	7,140.0	-2,178.96	-520.7	-1,511.6	1,536.4	0.00	0.00	0.00
9,100.0	90.00	270.15	7,140.0	-2,178.96	-520.5	-1,611.6	1,636.3	0.00	0.00	0.00
9,200.0	90.00	270.15	7,140.0	-2,178.96	-520.2	-1,711.6	1,736.1	0.00	0.00	0.00
9,300.0	90.00	270.15	7,140.0	-2,178.95	-519.9	-1,811.6	1,836.0	0.00	0.00	0.00
9,400.0	90.00	270.15	7,140.0	-2,178.95	-519.7	-1,911.6	1,935.8	0.00	0.00	0.00
9,500.0	90.00	270.15	7,139.9	-2,178.95	-519.4	-2,011.6	2,035.7	0.00	0.00	0.00
9,600.0	90.00	270.15	7,139.9	-2,178.95	-519.2	-2,111.6	2,135.6	0.00	0.00	0.00
9,700.0	90.00	270.15	7,139.9	-2,178.95	-518.9	-2,211.6	2,235.4	0.00	0.00	0.00
9,800.0	90.00	270.15	7,139.9	-2,178.94	-518.6	-2,311.6	2,335.3	0.00	0.00	0.00
9,900.0	90.00	270.15	7,139.9	-2,178.94	-518.4	-2,411.6	2,435.1	0.00	0.00	0.00
10,000.0	90.00	270.15	7,139.9	-2,178.94	-518.1	-2,511.6	2,535.0	0.00	0.00	0.00
10,100.0	90.00	270.15	7,139.9	-2,178.94	-517.8	-2,611.6	2,634.8	0.00	0.00	0.00
10,200.0	90.00	270.15	7,139.9	-2,178.94	-517.6	-2,711.6	2,734.7	0.00	0.00	0.00
10,300.0	90.00	270.15	7,139.9	-2,178.94	-517.3	-2,811.6	2,834.5	0.00	0.00	0.00
10,400.0	90.00	270.15	7,139.9	-2,178.93	-517.0	-2,911.6	2,934.4	0.00	0.00	0.00
10,500.0	90.00	270.15	7,139.9	-2,178.93	-516.8	-3,011.6	3,034.2	0.00	0.00	0.00
10,600.0	90.00	270.15	7,139.9	-2,178.93	-516.5	-3,111.6	3,134.1	0.00	0.00	0.00
10,700.0	90.00	270.15	7,139.9	-2,178.93	-516.2	-3,211.6	3,233.9	0.00	0.00	0.00
10,800.0	90.00	270.15	7,139.9	-2,178.93	-516.0	-3,311.6	3,333.8	0.00	0.00	0.00
10,900.0	90.00	270.15	7,139.9	-2,178.93	-515.7	-3,411.6	3,433.6	0.00	0.00	0.00
11,000.0	90.00	270.15	7,139.9	-2,178.93	-515.4	-3,511.6	3,533.5	0.00	0.00	0.00
11,100.0	90.00	270.15	7,139.9	-2,178.93	-515.2	-3,611.6	3,633.3	0.00	0.00	0.00
11,200.0	90.00	270.15	7,139.9	-2,178.93	-514.9	-3,711.6	3,733.2	0.00	0.00	0.00
11,300.0	90.00	270.15	7,139.9	-2,178.93	-514.6	-3,811.6	3,833.1	0.00	0.00	0.00
11,400.0	90.00	270.15	7,139.9	-2,178.93	-514.4	-3,911.6	3,932.9	0.00	0.00	0.00
11,500.0	90.00	270.15	7,139.9	-2,178.92	-514.1	-4,011.6	4,032.8	0.00	0.00	0.00
11,600.0	90.00	270.15	7,139.9	-2,178.92	-513.8	-4,111.6	4,132.6	0.00	0.00	0.00
11,700.0	90.00	270.15	7,139.9	-2,178.92	-513.5	-4,211.6	4,232.5	0.00	0.00	0.00
11,800.0	90.00	270.15	7,139.9	-2,178.92	-513.3	-4,311.6	4,332.3	0.00	0.00	0.00
11,900.0	90.00	270.15	7,139.9	-2,178.92	-513.0	-4,411.6	4,432.2	0.00	0.00	0.00
12,000.0	90.00	270.15	7,139.9	-2,178.92	-512.7	-4,511.6	4,532.0	0.00	0.00	0.00
12,100.0	90.00	270.15	7,139.9	-2,178.92	-512.5	-4,611.6	4,631.9	0.00	0.00	0.00
12,200.0	90.00	270.15	7,139.9	-2,178.92	-512.2	-4,711.6	4,731.7	0.00	0.00	0.00
12,300.0	90.00	270.15	7,139.9	-2,178.92	-511.9	-4,811.6	4,831.6	0.00	0.00	0.00
12,400.0	90.00	270.15	7,139.9	-2,178.92	-511.7	-4,911.6	4,931.4	0.00	0.00	0.00
12,500.0	90.00	270.15	7,139.9	-2,178.92	-511.4	-5,011.6	5,031.3	0.00	0.00	0.00
12,600.0	90.00	270.15	7,139.9	-2,178.92	-511.1	-5,111.6	5,131.1	0.00	0.00	0.00
12,700.0	90.00	270.15	7,139.9	-2,178.92	-510.9	-5,211.6	5,231.0	0.00	0.00	0.00
12,800.0	90.00	270.16	7,139.9	-2,178.92	-510.6	-5,311.6	5,330.8	0.00	0.00	0.00
12,900.0	90.00	270.16	7,139.9	-2,178.92	-510.3	-5,411.6	5,430.7	0.00	0.00	0.00
13,000.0	90.00	270.16	7,139.9	-2,178.92	-510.0	-5,511.6	5,530.6	0.00	0.00	0.00
13,100.0	90.00	270.16	7,139.9	-2,178.92	-509.8	-5,611.6	5,630.4	0.00	0.00	0.00
13,200.0	90.00	270.16	7,139.9	-2,178.92	-509.5	-5,711.6	5,730.3	0.00	0.00	0.00
13,300.0	90.00	270.16	7,139.9	-2,178.93	-509.2	-5,811.6	5,830.1	0.00	0.00	0.00
13,400.0	90.00	270.16	7,139.9	-2,178.93	-509.0	-5,911.6	5,930.0	0.00	0.00	0.00

Planning Report



Database:	EDM 5000.1 Single User Db	Local Co-ordinate Reference:	Well MCGIRR 6C
Company:	EXTRACTION OIL & GAS	TVD Reference:	KB-EST @ 4961.0usft
Project:	WELD COUNTY, COLORADO (NAD 83)	MD Reference:	KB-EST @ 4961.0usft
Site:	NE SE SEC. 26 T5N R68W 6th P.M.	North Reference:	True
Well:	MCGIRR 6C	Survey Calculation Method:	Minimum Curvature
Wellbore:	ORIGINAL WELLBORE		
Design:	PROPOSAL #2		

Planned Survey										
MD (usft)	Inc (°)	Azi (°)	TVD (usft)	SS (usft)	+N/-S (usft)	+E/-W (usft)	Vertical Section (usft)	Dogleg Rate (°/100usft)	Build Rate (°/100usft)	Turn Rate (°/100usft)
13,500.0	90.00	270.16	7,139.9	-2,178.93	-508.7	-6,011.6	6,029.8	0.00	0.00	0.00
13,600.0	90.00	270.16	7,139.9	-2,178.93	-508.4	-6,111.6	6,129.7	0.00	0.00	0.00
13,700.0	90.00	270.16	7,139.9	-2,178.93	-508.1	-6,211.6	6,229.5	0.00	0.00	0.00
13,800.0	90.00	270.16	7,139.9	-2,178.93	-507.9	-6,311.6	6,329.4	0.00	0.00	0.00
13,900.0	90.00	270.16	7,139.9	-2,178.93	-507.6	-6,411.6	6,429.2	0.00	0.00	0.00
14,000.0	90.00	270.16	7,139.9	-2,178.93	-507.3	-6,511.6	6,529.1	0.00	0.00	0.00
14,100.0	90.00	270.16	7,139.9	-2,178.93	-507.0	-6,611.6	6,628.9	0.00	0.00	0.00
14,200.0	90.00	270.16	7,139.9	-2,178.93	-506.8	-6,711.6	6,728.8	0.00	0.00	0.00
14,300.0	90.00	270.16	7,139.9	-2,178.93	-506.5	-6,811.6	6,828.6	0.00	0.00	0.00
14,400.0	90.00	270.16	7,139.9	-2,178.94	-506.2	-6,911.6	6,928.5	0.00	0.00	0.00
14,500.0	90.00	270.16	7,139.9	-2,178.94	-506.0	-7,011.6	7,028.3	0.00	0.00	0.00
14,600.0	90.00	270.16	7,139.9	-2,178.94	-505.7	-7,111.6	7,128.2	0.00	0.00	0.00
14,700.0	90.00	270.16	7,139.9	-2,178.94	-505.4	-7,211.6	7,228.0	0.00	0.00	0.00
14,800.0	90.00	270.16	7,139.9	-2,178.94	-505.1	-7,311.6	7,327.9	0.00	0.00	0.00
14,900.0	90.00	270.16	7,139.9	-2,178.94	-504.9	-7,411.6	7,427.8	0.00	0.00	0.00
15,000.0	90.00	270.16	7,139.9	-2,178.95	-504.6	-7,511.6	7,527.6	0.00	0.00	0.00
15,100.0	90.00	270.16	7,139.9	-2,178.95	-504.3	-7,611.6	7,627.5	0.00	0.00	0.00
15,200.0	90.00	270.16	7,139.9	-2,178.95	-504.0	-7,711.6	7,727.3	0.00	0.00	0.00
15,300.0	90.00	270.16	7,140.0	-2,178.95	-503.8	-7,811.6	7,827.2	0.00	0.00	0.00
15,400.0	90.00	270.16	7,140.0	-2,178.95	-503.5	-7,911.6	7,927.0	0.00	0.00	0.00
15,500.0	90.00	270.16	7,140.0	-2,178.96	-503.2	-8,011.6	8,026.9	0.00	0.00	0.00
15,600.0	90.00	270.16	7,140.0	-2,178.96	-502.9	-8,111.6	8,126.7	0.00	0.00	0.00
15,700.0	90.00	270.16	7,140.0	-2,178.96	-502.7	-8,211.6	8,226.6	0.00	0.00	0.00
15,800.0	90.00	270.16	7,140.0	-2,178.96	-502.4	-8,311.6	8,326.4	0.00	0.00	0.00
15,900.0	90.00	270.16	7,140.0	-2,178.96	-502.1	-8,411.6	8,426.3	0.00	0.00	0.00
16,000.0	90.00	270.16	7,140.0	-2,178.97	-501.8	-8,511.6	8,526.1	0.00	0.00	0.00
16,100.0	90.00	270.16	7,140.0	-2,178.97	-501.6	-8,611.6	8,626.0	0.00	0.00	0.00
16,200.0	90.00	270.16	7,140.0	-2,178.97	-501.3	-8,711.6	8,725.8	0.00	0.00	0.00
16,300.0	90.00	270.16	7,140.0	-2,178.97	-501.0	-8,811.6	8,825.7	0.00	0.00	0.00
16,400.0	90.00	270.16	7,140.0	-2,178.98	-500.7	-8,911.6	8,925.5	0.00	0.00	0.00
16,500.0	90.00	270.16	7,140.0	-2,178.98	-500.5	-9,011.6	9,025.4	0.00	0.00	0.00
16,600.0	90.00	270.16	7,140.0	-2,178.98	-500.2	-9,111.6	9,125.2	0.00	0.00	0.00
16,700.0	90.00	270.16	7,140.0	-2,178.99	-499.9	-9,211.6	9,225.1	0.00	0.00	0.00
16,800.0	90.00	270.16	7,140.0	-2,178.99	-499.6	-9,311.6	9,325.0	0.00	0.00	0.00
16,900.0	90.00	270.16	7,140.0	-2,178.99	-499.3	-9,411.6	9,424.8	0.00	0.00	0.00
17,000.0	90.00	270.16	7,140.0	-2,179.00	-499.1	-9,511.6	9,524.7	0.00	0.00	0.00
17,100.0	90.00	270.16	7,140.0	-2,179.00	-498.8	-9,611.6	9,624.5	0.00	0.00	0.00
BHL: 1484ft FSL & 460ft FWL of Sec 27										
17,151.9	90.00	270.16	7,140.0	-2,179.00	-498.6	-9,663.4	9,676.3	0.00	0.00	0.00

Database:	EDM 5000.1 Single User Db	Local Co-ordinate Reference:	Well MCGIRR 6C
Company:	EXTRACTION OIL & GAS	TVD Reference:	KB-EST @ 4961.0usft
Project:	WELD COUNTY, COLORADO (NAD 83)	MD Reference:	KB-EST @ 4961.0usft
Site:	NE SE SEC. 26 T5N R68W 6th P.M.	North Reference:	True
Well:	MCGIRR 6C	Survey Calculation Method:	Minimum Curvature
Wellbore:	ORIGINAL WELLBORE		
Design:	PROPOSAL #2		

Formations					
MD (usft)	TVD (usft)	Name	Lithology	Dip (°)	Dip Direction (°)
3,407.0	3,350.0	PARKMAN		0.00	
4,152.1	4,080.0	SUSSEX		0.00	
4,543.4	4,470.0	SHANNON		0.00	
6,853.3	6,775.0	SHARON SPRINGS		0.00	
6,902.5	6,820.0	NIOBRARA		0.00	
7,339.2	7,105.0	FORT HAYS		0.00	
7,433.3	7,130.0	CODELL		0.00	

Plan Annotations				
MD (usft)	TVD (usft)	Local Coordinates		Comment
		+N/-S (usft)	+E/-W (usft)	
0.0	0.0	0.0	0.0	SHL: 1998ft FSL & 409ft FEL of Sec 26
400.0	400.0	0.0	0.0	START NUDGE (2°/100ft BUR)
1,000.0	995.6	-44.5	44.0	EOB TO 12° INC
3,958.4	3,889.4	-481.6	476.9	END OF TANGENT
4,558.4	4,485.0	-526.1	520.9	EOD TO VERTICAL
6,640.4	6,567.0	-526.1	520.9	KOP (10°/100ft BUR)
7,540.5	7,140.0	-524.6	-52.1	HZ LP: 1474ft FSL & 460ft FEL of Sec 26
17,151.9	7,140.0	-498.6	-9,663.4	BHL: 1484ft FSL & 460ft FWL of Sec 27