

COMPENSATED DENSITY COMPENSATED NEUTRON GAMMA RAY

Company Well Field County State/Pv	Company	Patina Oil & Gas Corporation		
	Well	Marshall G32-13Ji		
	Field	Wattenberg		
	County	Weld	State	Colorado
	Location	660' FSL & 466' FWL SW SW Sec - 32, Twp - 4N, Rge - 65W		Other Services Density Neutron
	Permanent Datum	GL	Elevation	4951
	Log Measure From	KB		K.B. 4963
	Drilling Measure From	KB		D.F. 4962
				G.L. 4951
Date	March 30, 2001			
Run Number	1			
Depth Driller	7960			
Depth Logger	7947			
Bottom Logged Interval	7927			
Top Log Interval	4500			
Casing Driller	680			
Casing Logger	Not Logged			
Bit Size	7-7/8"			
Type Fluid in Hole	Chem Gel			
Density / Viscosity	9.4 / 60			
pH / Fluid Loss	8.0 / 8.0			
Source of Sample	Flowline			
Rm @ Meas. Temp	3.28 @ 74° F			
Rmf @ Meas. Temp	2.46 @ 74° F			
Rmc @ Meas. Temp	4.10 @ 74° F			
Source of Rmf / Rmc	Meas / Calc			
Rm @ BHT	1.09 @ 221° F			
Time Circulation Stopped	0000			
Time Logger on Bottom	0700			
Maximum Recorded Temperature	221° F			
Equipment Number	4057			
Location	Brighton CO			
Recorded By	Patrick Grissom			
Witnessed By	Mike Griffin			

Nio A
Perfs
7062'-
7080'



211

7100

Nio B
Perfs
7130'-
7148'



198

7150

Proposed
Nio C
Perfs

186

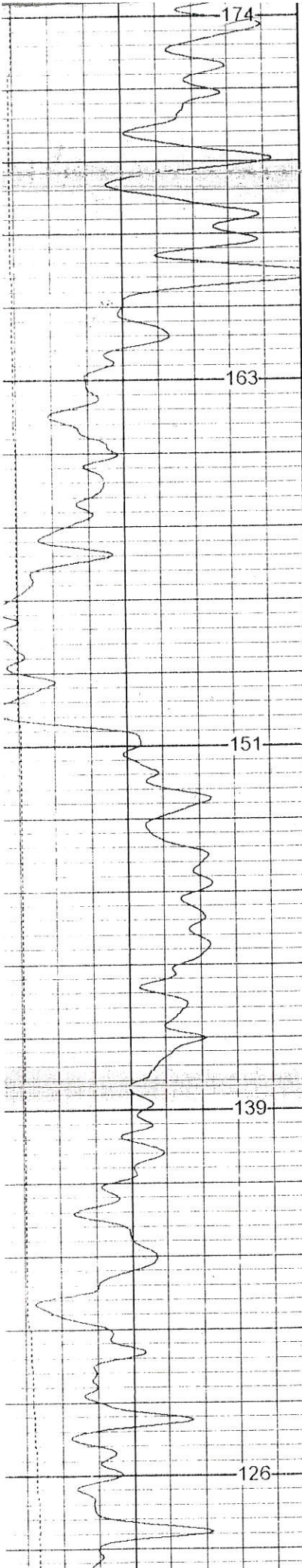
7200

7230'-
7442'



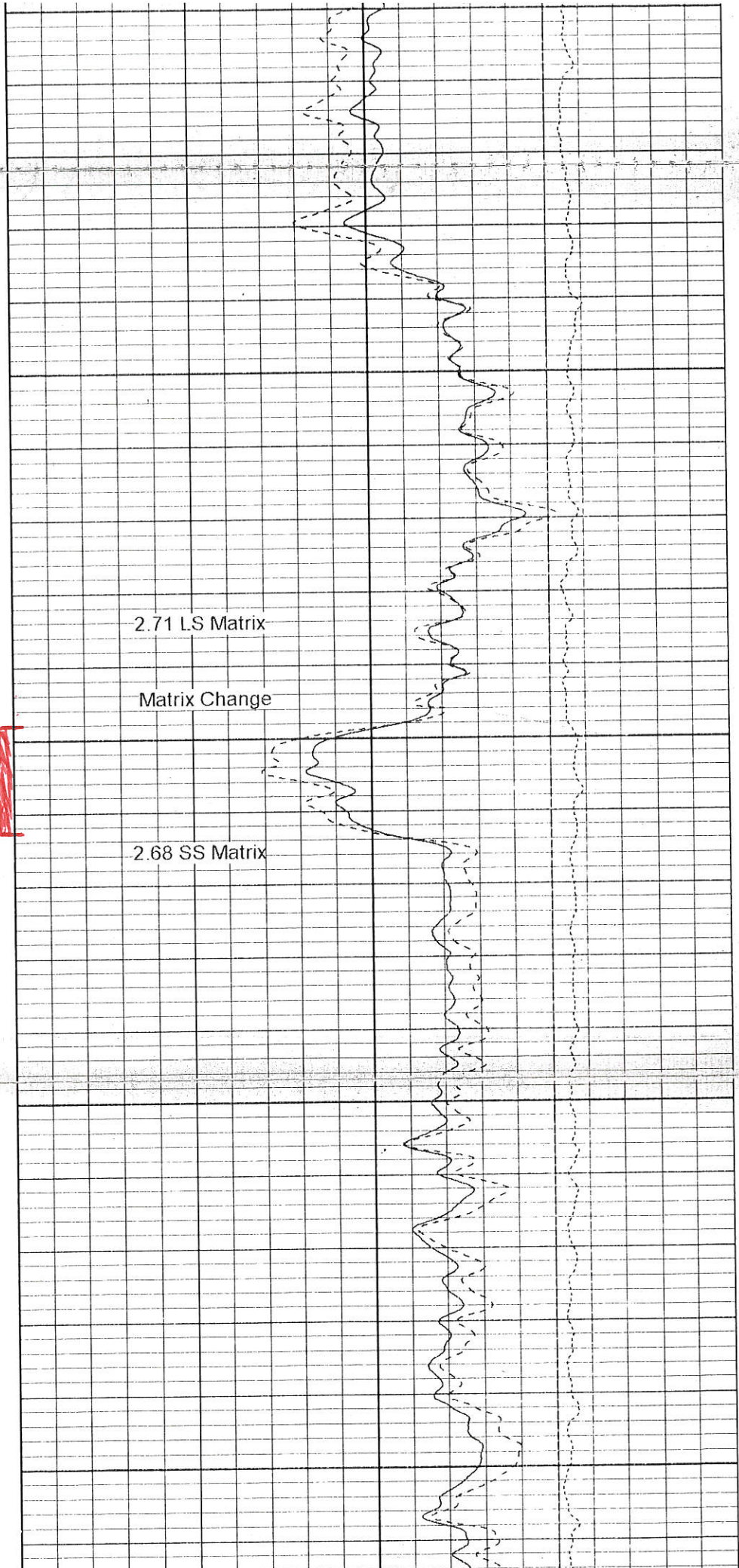
174

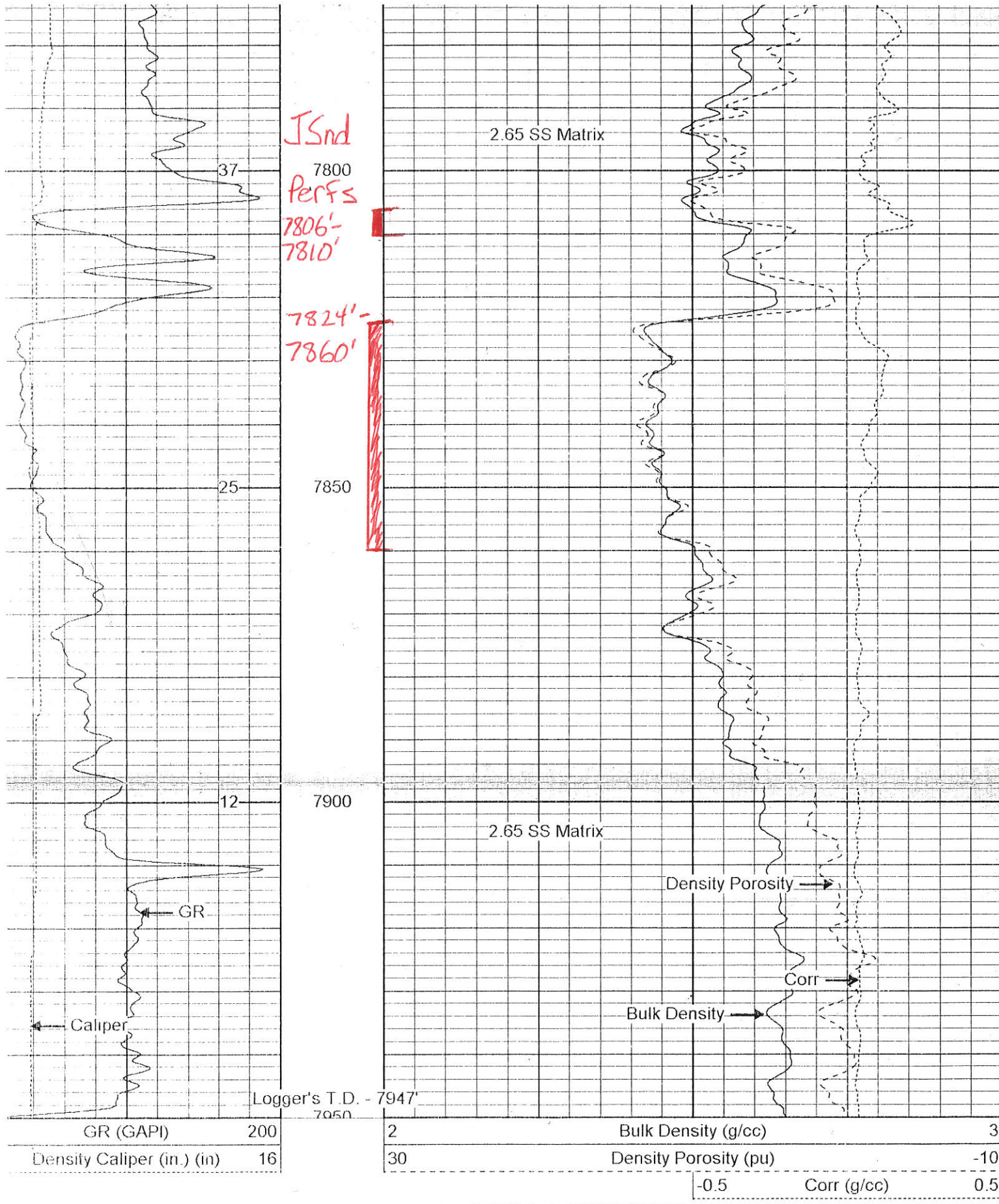
7250



7250
7300
7350
7400
7450

CDL
Perfs
7348'
7363'





Dual Induction Calibration Report

Serial-Model:
Surface Cal Performed:

188-PSI
Fri Mar 23 05:41:07 2001