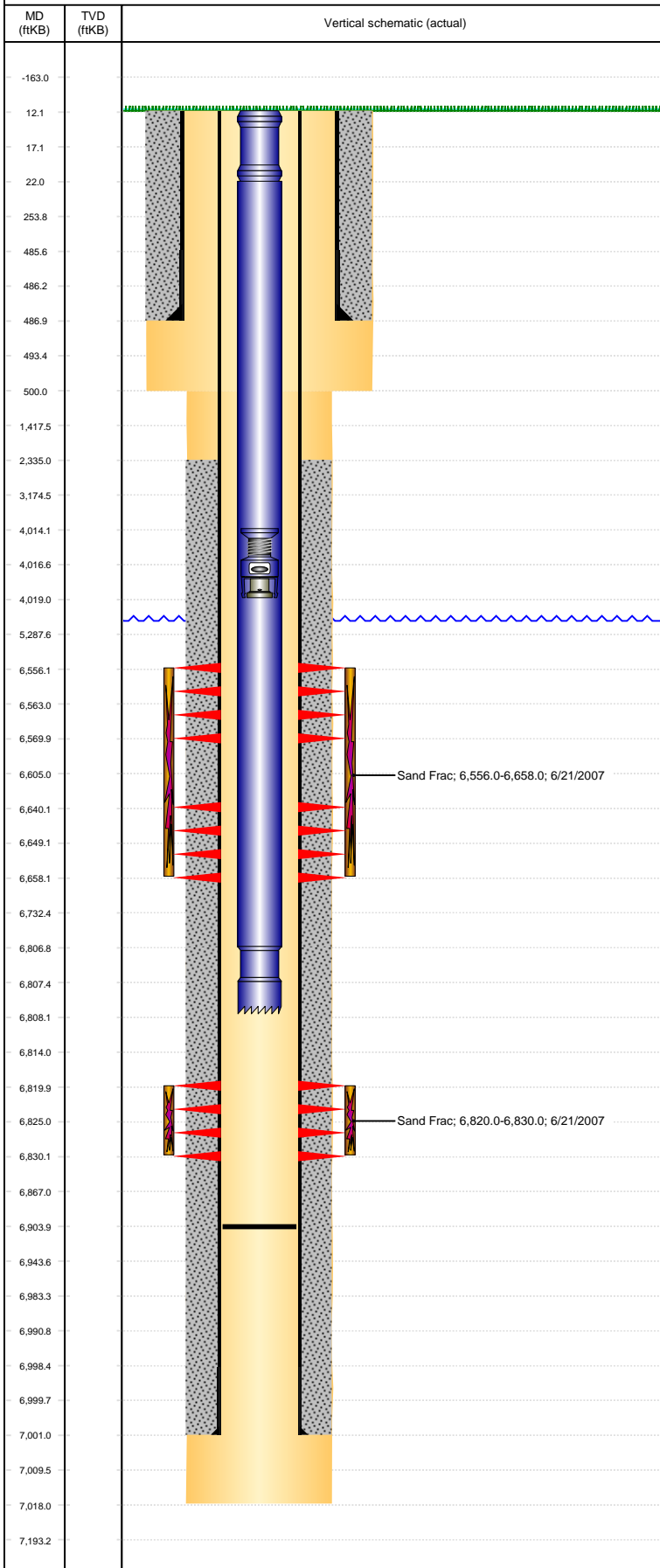


Well Name: WELLS RANCH USX AA33-23

VERTICAL - ORIGINAL HOLE, 3/23/2017 2:25:29 PM



Well Header						
API 05-123-25114	Business Unit DJ BASIN		District 15	Well Config VERTICAL		
Original KB Elevation (ft) 4,811	KB - GL / MSL (ftKB) 12.00		Spud Date 5/21/2007		P & A Date	
Comment DISCREPANCY IN TD: 7018' DAILY DRLG RPT & TD LOGGER/ 7017' RPT TO COGCC						
Directions To Well						
Congressional Location						
Quarter 3 SW	Quarter 4 SE	Section 33	Township 6	Twntshp N/S Dir N	Range 63	Range E/W Dir W
Bottom Hole Location						
North-South Distance (ft)		From N or S Line		East-West Distance (ft)		From E or W Line
Plug Back Total Depths						
Date	Depth (ftKB)	Method		Com		
5/25/2007	6,984.0	CASING TALLY		FLOAT SHOE W/COLLAR		
6/4/2007	6,966.0	CASED HOLE LOG		DEPTH LOGGER ON CBL		
12/5/2007	6,904.0	TAG		C/O TO 6904'		
Wellbore Sections						
Section Des		Size (in)		Act Top, MD (ftKB)		Act Btm, MD (ftKB)
SURFACE		12 1/4		12		500
PRODUCTION		7 7/8		500		7,018
Zone Statuses						
Zone Name	Status Date	Status	Fluid Type	Job	Prod Method	
CODELL	7/9/2007	PR		DRILLING/CO...		
NIOBRARA	7/9/2007	PR		DRILLING/CO...		
Casing Strings						
Surface, 487.0ftKB						
Casing Description Surface	Run Date 5/22/2007	OD (in) 8 5/8	Wt/Len (l... 24.00	Grade J-55	Top, MD (ft... 12.0	MD (ftKB) 487.0
Production, 7,001.0ftKB						
Casing Description Production	Run Date 5/25/2007	OD (in) 4 1/2	Wt/Len (l... 11.60	Grade M-80	Top, MD (ft... 12.0	MD (ftKB) 7,001.0
Cement						
Description SURFACE CASING CEMENT				Top Depth (ftKB) 12.0		Bottom Depth (ftKB) 487.0
Description PRODUCTION CASING CEMENT				Top Depth (ftKB) 2,335.0		Bottom Depth (ftKB) 7,001.0
Tubing Strings						
Tubing Description Tubing - Production	Run Date 12/5/2007	String... 2 3/8	ID (in)	Wt (lb/ft) 4.70	Grade J-55	Len (ft) 6,796.00
Set De...						
Tubing Components						
Item Des	OD (in)	Wt (lb/ft)	Grade	Jts	Len (ft)	Btm (ftKB)
Pup Joint	2 3/8		J-55	1	10.00	22.0
EUE 8rd Tubing	2 3/8	4.70	J-55	220	6,784.60	6,806.6
Notched collar	2 3/8				1.40	6,808.0
Other In Hole						
Run Date	Des			OD (in)	Top (ftKB)	Btm (ftKB)
7/11/2013	Stage Tool			2	4,014.0	4,019.0
Logs						
Date	Type				Top, MD (ftKB)	Btm, MD (ftKB)
5/25/2007	COMPENSATED DENSITY				2,800.0	6,998.0
5/25/2007	INDUCTION				12.0	7,018.0
6/4/2007	CBL/CCL/GR				2,230.0	6,959.0
5/4/2015	GYRO				12.0	6,700.0
Perforation Data						
Linked Zone	Bnch/St g	Sum of Entered Shot Total	Top (ftKB)	Btm (ftKB)	Date	
NIOBRARA, ORIGINAL HOLE	A	56	6,556.00	6,570.00	6/21/2007	
NIOBRARA, ORIGINAL HOLE	B	72	6,640.00	6,658.00	6/21/2007	
CODELL, ORIGINAL HOLE		40	6,820.00	6,830.00	6/7/2007	
Total (Sum)		168				

Well Name: WELLS RANCH USX AA33-23

VERTICAL - ORIGINAL HOLE, 3/23/2017 2:25:30 PM

Stimulation Intervals

Interval...	Start Date	Primary Job Type	Zone
1	6/21/2007	DRILLING/COMPLETION - ORIGINAL	NIOBRARA, ORIGINAL HOLE

Technical Result	Tech Result Details	Tech Result Note
------------------	---------------------	------------------

Comment

Interval...	Start Date	Primary Job Type	Zone
2	6/21/2007	DRILLING/COMPLETION - ORIGINAL	CODELL, ORIGINAL HOLE

Technical Result	Tech Result Details	Tech Result Note
------------------	---------------------	------------------

Comment

