

**NOBLE ENERGY INC.**  
 Stromberger 13-35  
 SWSW 13-6N-67W  
 1024 FSL & 1083 FWL  
 WELD COUNTY, CO  
 Wattenberg  
**CURRENT WELLBORE SCHEMATIC**  
 with PROPOSED P&A

API: 05-123-26235  
 COGCC #

GL Elev: 4809'  
 KB Elev: 4825'

**Spud Date:** 12/22/2007

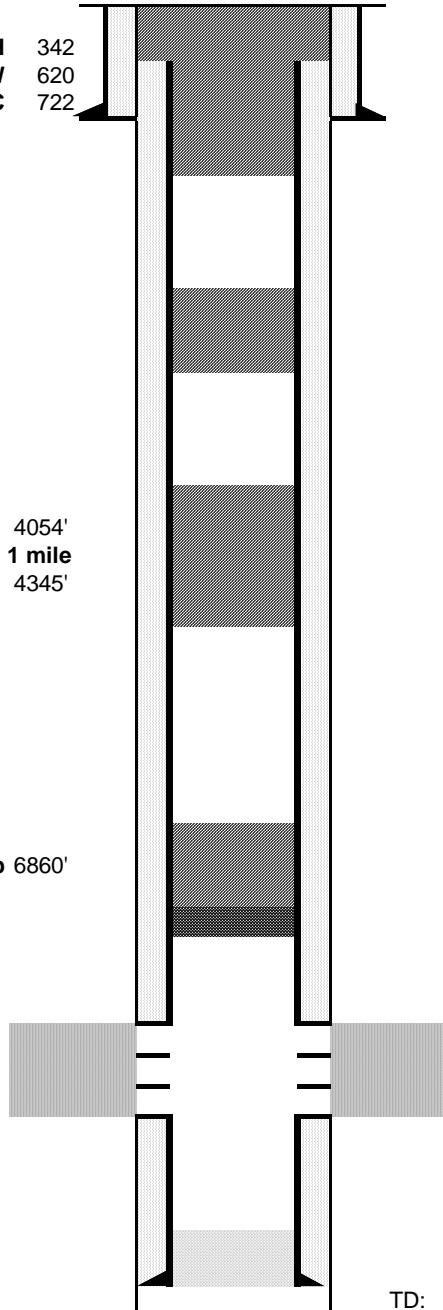
**Surface Casing :**  
 8-5/8" 24# @ 722'  
 Cement: 260 sx  
**TOC:** Surface

**Sussex top** 4054'  
**Sussex completions within 1 mile**  
**Sussex base** 4345'

**Production Casing :**  
 4-1/2" 11.60# M-80 @ 7436'  
 Cement: 1145 sx  
 TD Date: 12/28/2007  
**TOC:** 424'

**Nio Top** 6860'

**FH** 342  
**WW** 620  
**SC** 722



Cut surface casing off 6'-8' below surface.

Cut production casing at 370'  
 Cmt to surface with 150 sx at 922'

**New TOC: 2000'**

**Pump 40 sx courtesy plug at 2500'**

**New TOC: 3950'**

**Pump 40 sx balanced plug at 4450'**

**New TOC: 6660'**

**Set CIBP at 7122' with 40 sx cement**

**Codell Perforations 7172'-7188'**

**TD: 7358'**