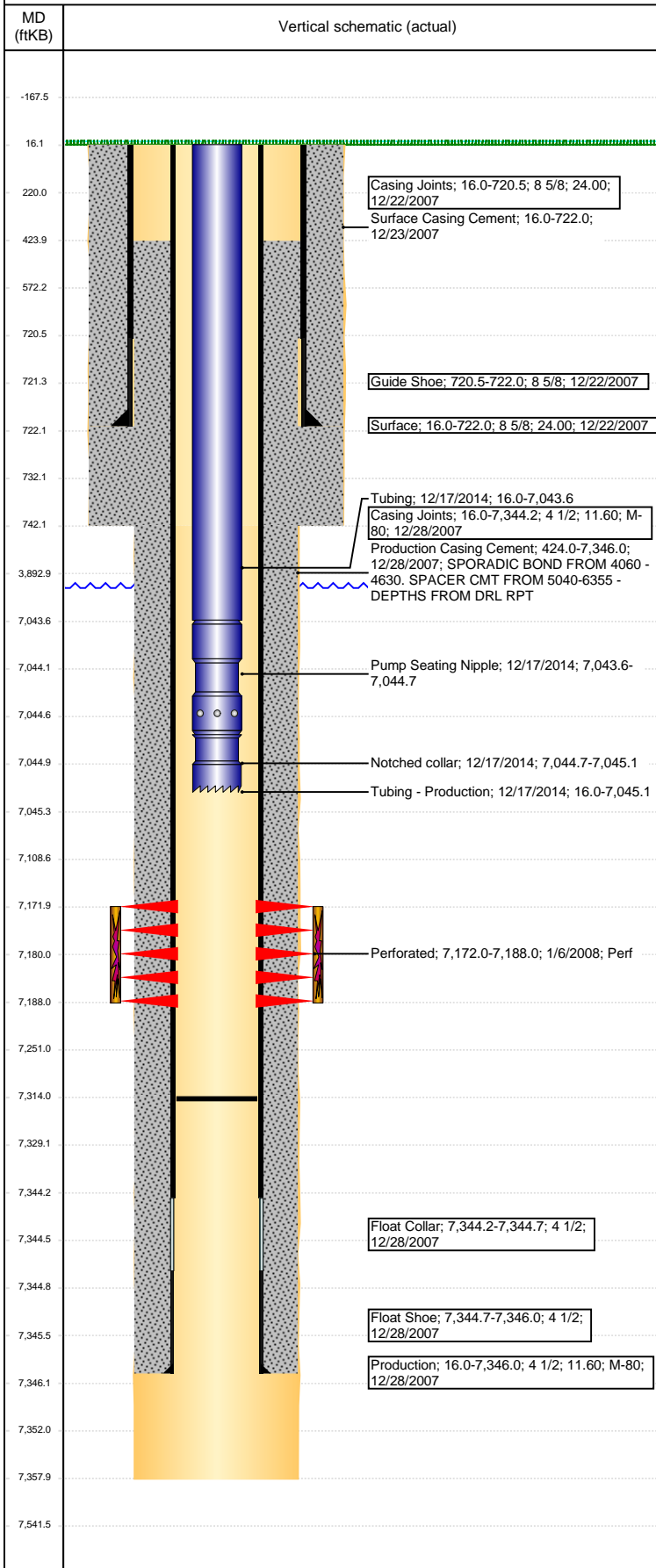


Well Name: STROMBERGER 13-35

VERTICAL - ORIGINAL HOLE, 3/28/2017 3:17:45 PM



Well Header

API 05-123-26235	Business Unit DJ BASIN	District 15	Well Config VERTICAL
Original KB Elevation (ft) 4,825	KB - GL / MSL (ftKB) 16.00	Spud Date 12/22/2007	P & A Date
Comment			

Directions To Well

HWY 392 AND CR 25, W 5/10, N INTO BATT, W 1/10, N INTO

Congressional Location

Quarter 3 SW	Quarter 4 SW	Section 13	Township 6	Twnshp N/S Dir N	Range 67	Range E/W Dir W
-----------------	-----------------	---------------	---------------	---------------------	-------------	--------------------

Bottom Hole Location

North-South Distance (ft)	From N or S Line	East-West Distance (ft)	From E or W Line
---------------------------	------------------	-------------------------	------------------

Plug Back Total Depths

Date	Depth (ftKB)	Method	Com
12/28/2007	7,331.0	TAG	FLOAT SHOE
1/7/2008	7,320.0	CASED HOLE LOG	DEPTH LOGGER FROM CBL
2/14/2008	7,331.0	TAG	C/O AND LAND TBG
5/15/2014	7,314.0	TAG	RIH W/ 5 TAG JTS TBG AND DID NOT TAG

Wellbore Sections

Section Des	Size (in)	Act Top, MD (ftKB)	Act Btm, MD (ftKB)
SURFACE	12 1/4	16	742
PRODUCTION	7 7/8	742	7,358

Zone Statuses

Zone Name	Status Date	Status	Fluid Type	Job	Prod Method
CODELL	1/29/2008	PR		DRILLING/CO...	

Casing Strings

Surface, 722.0ftKB

Casing Description	Run Date	OD (in)	Wt/Len (l...)	Grade	Top, MD (ft...)	MD (ftKB)
Surface	12/22/2007	8 5/8	24.00		16.0	722.0

Production, 7,346.0ftKB

Casing Description	Run Date	OD (in)	Wt/Len (l...)	Grade	Top, MD (ft...)	MD (ftKB)
Production	12/28/2007	4 1/2	11.60	M-80	16.0	7,346.0

Cement

Description	Top Depth (ftKB)	Bottom Depth (ftKB)
Surface Casing Cement	16.0	722.0
Production Casing Cement	424.0	7,346.0

Tubing Strings

Tubing Description	Run Date	String...	ID (in)	Wt (lb/ft)	Grade	Len (ft)	Set De...
Tubing - Production	2/14/2008	2 3/8				7,148.00	
Tubing Description	Run Date	String...	ID (in)	Wt (lb/ft)	Grade	Len (ft)	Set De...
Tubing - Production	5/16/2014	2 3/8	2.00	4.70	J-55	6,529.88	
Tubing Description	Run Date	String...	ID (in)	Wt (lb/ft)	Grade	Len (ft)	Set De...
Tubing - Production	12/17/2014	2 3/8	2.00	4.70	J-55	7,029.13	

Tubing Components

Item Des	OD (in)	Wt (lb/ft)	Grade	Jts	Len (ft)	Btm (ftKB)	Btm (TVD) (ftKB)
Tubing	2 3/8	4.70	J-55	226	7,027.63	7,043.6	
Pump Seating Nipple	2 3/8	1.10	X	1	1.10	7,044.7	
Notched collar	2 3/8	0.00	X	1	0.40	7,045.1	

Other In Hole

Run Date	Des	OD (in)	Top (ftKB)	Btm (ftKB)
----------	-----	---------	------------	------------

Logs

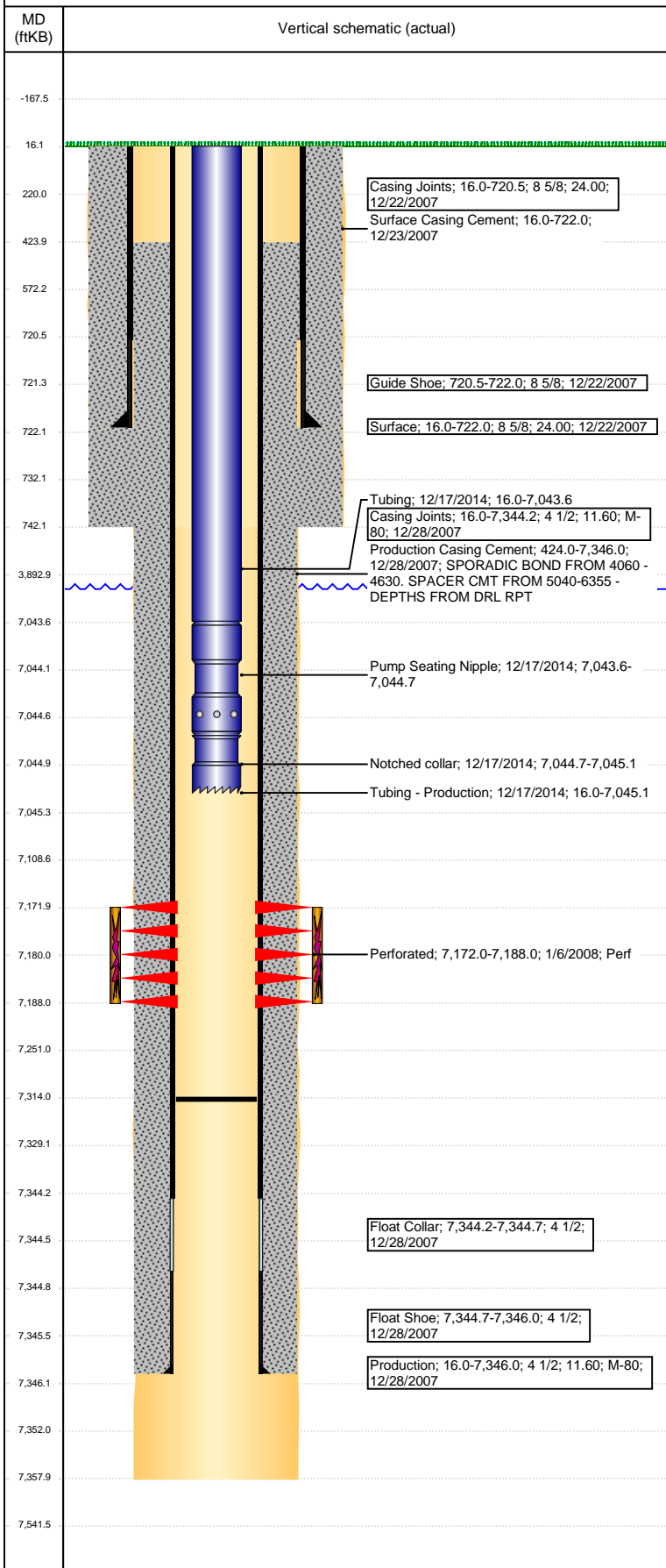
Date	Type	Top, MD (ftKB)	Btm, MD (ftKB)
12/27/2007	COMPENSATED DENSITY	3,500.0	7,333.0
12/27/2007	INDUCTION	713.0	7,353.0
1/7/2008	CBL/CCL/GR	300.0	7,318.0

Perforation Data

Linked Zone	Bnch/St g	Sum of Entered Shot Total	Top (ftKB)	Btm (ftKB)	Date
CODELL, ORIGINAL HOLE		64	7,172.00	7,188.00	1/6/2008

Well Name: STROMBERGER 13-35

VERTICAL - ORIGINAL HOLE, 3/28/2017 3:17:47 PM



Perforation Data					
Linked Zone	Bnch/St g	Sum of Entered Shot Total	Top (ftKB)	Btm (ftKB)	Date
Total (Sum)		64			
Stimulation Intervals					
Start Date 1/11/2008		Primary Job Type DRILLING/COMPLETION - ORIGINAL			
Technical Result		Tech Result Details		Tech Result Note	
Comment					