

LEGEND:

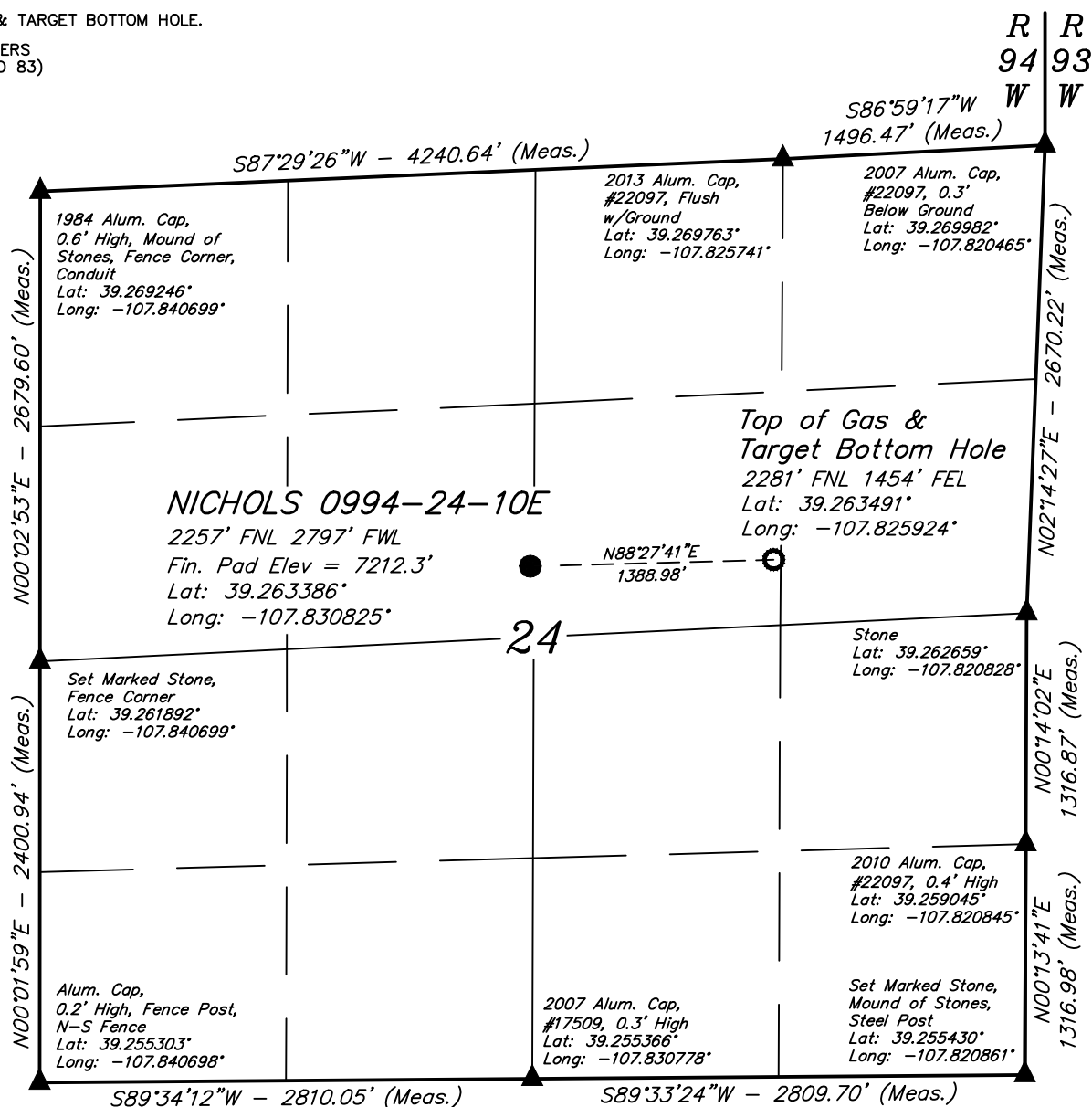
— = 90° SYMBOL

● = PROPOSED WELLHEAD.

○ = TOP OF GAS & TARGET BOTTOM HOLE.

▲ = SECTION CORNERS
LOCATED. (NAD 83)

T9S, R94W, 6th P.M.

**NOTE DISTANCE TO NEAREST:**

BUILDING: N39°E 2546'

BUILDING UNIT: OVER A MILE

HOB: OVER A MILE

DOAA: OVER A MILE

PUBLIC ROAD: N39°W 775'

ABOVE GROUND UTILITY: N05°W 835'

RAILROAD: OVER A MILE

PROPERTY LINE: N03°W 926'

NOTE:

- 1.) All latitudes and longitudes are given in NAD 83 coordinates.
- 2.) Distances to nearest section lines are measured perpendicularly.

CERTIFICATE
THIS IS TO CERTIFY THAT THE ABOVE PLAT WAS PREPARED FROM FIELD NOTES OF ACTUAL SURVEYS MADE BY ME OR UNDER MY SUPERVISION AND THAT THE SAME ARE TRUE AND CORRECT TO THE BEST OF MY KNOWLEDGE AND BELIEF.

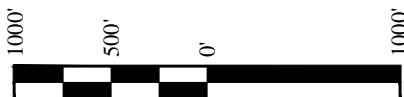
REGISTERED LAND SURVEYOR

REGISTRATION # 38130

STATE OF COLORADO

03-06-17

PDOP = 1.9

**BASIS OF BEARINGS**

BASIS OF BEARINGS IS A G.P.S. OBSERVATION

BASIS OF ELEVATION

BENCH MARK (19 RDS) LOCATED IN THE SE 1/4 OF SECTION 16, T9S, R93W, 6th P.M., TAKEN FROM THE SOUTH MAMM PEAK, QUADRANGLE, COLORADO, 7.5 MINUTE QUAD. (TOPOGRAPHIC MAP) PUBLISHED BY THE UNITED STATES DEPARTMENT OF THE INTERIOR, GEOLOGICAL SURVEY. SAID ELEVATION IS MARKED AS BEING 7252 FEET.

UELS, LLC

Corporate Office * 85 South 200 East
Vernal, UT 84078 * (435) 789-1017

**LARAMIE ENERGY, LLC**

NICHOLS 0994-24-10E
SECTION 24, T9S, R94W, 6th P.M.
MESA COUNTY, COLORADO

SURVEYED BY	CODY RICH, B.H.	08-30-16	SCALE
DRAWN BY	S.S.	02-21-17	1" = 1000'

WELL LOCATION PLAT