



SRC ENERGY

**Operator:** SRC Energy  
**Well Name:** Dupper #3  
**Legal:** SENE, Section 27, Township 4N, Range 65W  
**Location:** Weld County, CO  
**API:** 05-123-12338

Deepest Water Well Within 1  
Mile = 450'




### Wellbore History

Spud Date: 03/24/1985  
Surf Csg: 8.625", 24# @ 311' – 100sx  
Prod Csg: 4.5", 11.6# @ 7183' -  
220sx  
TOC: 6072 (CALC)  
Perfs: NIOBRARA: 6781'-6983'  
CODELL: 7070'-7077'

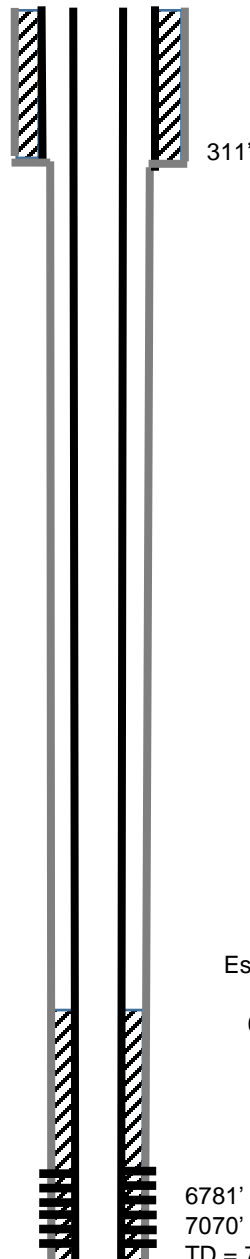
### P&A Procedure

Set retainer@ 6706' and squeeze perfs  
Set 5 sx on top of retainer (50' plug)  
Perf & circ 30 sx on backside  
Pump 10 sx @ 4175' – 4275' (100' plug)  
Cut Casing @ 321'  
Pmp 150 sx @ 371' to surface

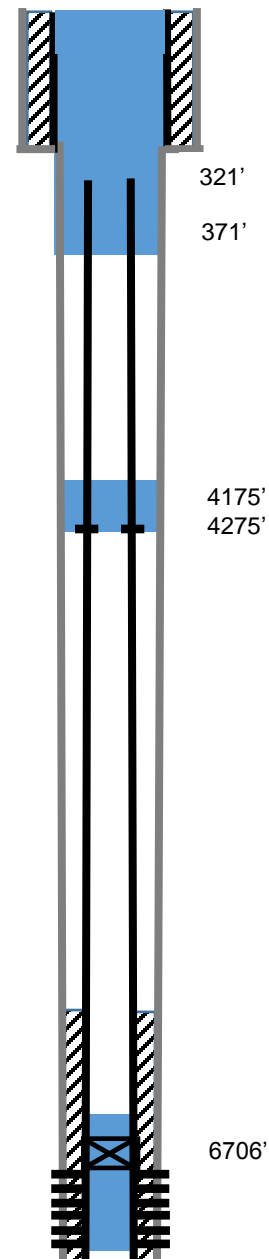
### Key

-  Existing Cement Coverage
-  Retainer
-  Cement Pumped

### Current



### Proposed



Estimated  
TOC  
6072'