

T7S, R96W, 6th P.M.

32

T6S  
T7S

S 1/4 Cor. Sec. 31  
W.C. 1912 Brass  
Cap, 0.7' High  
Lat: 39.473161°  
Long: 108.150919°

W 1/4 Cor. Sec. 32  
Alum Cap, #17485,  
1.5' High, Pile of Stones  
Lat: 39.480372°  
Long: 108.141708°

Section Corner  
Re-Established by  
Single Proportion  
Method (Not Set)  
Lat: 39.473161°  
Long: 108.141914°

1912 Brass Cap  
0.9' High  
Lat: 39.473206°  
Long: 108.132189°

1912 Brass Cap  
1.4' High, Pile of  
Stones, Steel Rod  
Lat: 39.473253°  
Long: 108.122347°

True Position  
Lat: 39.473161°  
Long: 108.149983°

S89°41'08"W - 2745.94' (Meas.)

S89°39'31"W - 2779.74' (Meas.)

N89°58'52"W  
2278.57' (Meas.)

# LEGEND:

- 90° SYMBOL
- PROPOSED WELLHEAD.
- TARGET BOTTOM HOLE.
- SECTION CORNERS LOCATED.
- SECTION CORNERS RE-ESTABLISHED. (Not Set on Ground.)

1920 Brass Cap  
1.0' High  
Lat: 39.466308°  
Long: 108.140608°

LOT 4  
NOTE:  
SEE CURRENT FOOTAGE PLAT #6 FOR  
EXISTING IMPROVEMENT WITHIN 500'  
OF THE PROPOSED WELL HEAD.

LOT 3

LOT 2

LOT 1

N00°01'E - 2488.86' (G.L.O.)

N00°24'47"W - 2650.27' (Meas.)

S00°21'19"W - 2650.20' (Meas.)

W 1/4 Cor. Sec. 8

N 1/4 Cor. Sec. 7  
1920 Brass Cap,  
1.1' High  
Lat: 39.459036°  
Long: 108.149894°

N89°57'17"W  
2642.78' (Meas.)

Section Corner  
Re-Established by Double  
Proportion Method  
Lat: 39.459033°  
Long: 108.140536°

1920 Brass Cap  
1.5' High  
Lat: 39.459042°  
Long: 108.131169°

LINE TABLE		
LINE	DIRECTION	LENGTH
L1	N89°58'52"W	264.66'
L2	N00°02'55"E	129.07'

NOTE:  
THE PROPOSED TARGET BOTTOM HOLE FOR  
THIS WELL IS LOCATED IN THE NW 1/4 SW 1/4  
OF SECTION 4, T7S, R96W, 6th P.M. AT 2426'  
FSL 797' FWL. IT BEARS N47°33'03"E 2290.23'  
FROM THE PROPOSED WELLHEAD.

GM 313-4

Elev. Graded Ground = 5976.7'

LOT 5  
1920 Brass Cap  
1.5' High, Pile of  
Stones  
Lat: 39.466536°  
Long: 108.122344°

N00°05'33"E  
214.18' (Meas.)  
2012 Alum. Cap,  
1.0' High  
Lat: 39.465949°  
Long: 108.122346°

LOT 6

LOT 7

Target  
Bottom  
Hole

C.C.  
1920 Brass Cap,  
0.6' High, Pile of  
Stones  
Lat: 39.459024°  
Long: 108.122346°

1920 Brass Cap,  
0.8' High, Pile  
of Stones  
Lat: 39.458669°  
Long: 108.122347°

PDOP = 1.3

## NAD 83 (SURFACE LOCATION)

LATITUDE = 39°27'39.96" (39.461100)  
LONGITUDE = 108°07'31.82" (108.125506)  
STATE PLANE NAD 83 COLO. CENT.  
N: 1603545.57 E: 2258816.87



CERTIFICATE  
THIS IS TO CERTIFY THAT THE ABOVE PLAT WAS PREPARED AND  
LOCATION AS SHOWN WAS STAKED ON THE GROUND FROM FIELD NOTES  
OF ACTUAL SURVEYS MADE BY ME OR UNDER MY SUPERVISION AND THAT  
THE SAME ARE TRUE AND CORRECT TO THE BEST OF MY KNOWLEDGE AND  
BELIEF.

REGISTERED LAND SURVEYOR  
REGISTRATION NO. 19880  
STATE OF COLORADO  
03-02-17

PLAT #1

REV: 1 03-02-17 M.D. (SHL & BHL CHANGE)

## BASIS OF BEARINGS

BASIS OF BEARINGS IS A G.P.S. OBSERVATION

## BASIS OF ELEVATION

SPOT ELEVATION AT THE NORTHWEST CORNER OF SECTION 30, T5S, R95W, 6th P.M.,  
TAKEN FROM THE FORKED GULCH, QUADRANGLE, COLORADO, GARFIELD COUNTY, 7.5  
MINUTE QUAD. (TOPOGRAPHIC MAP) PUBLISHED BY THE UNITED STATES DEPARTMENT  
OF THE INTERIOR, GEOLOGICAL SURVEY. SAID ELEVATION IS MARKED AS BEING 5966  
FEET.



UELS, LLC  
Corporate Office \* 85 South 200 East  
Vernal, UT 84078 \* (435) 789-1017



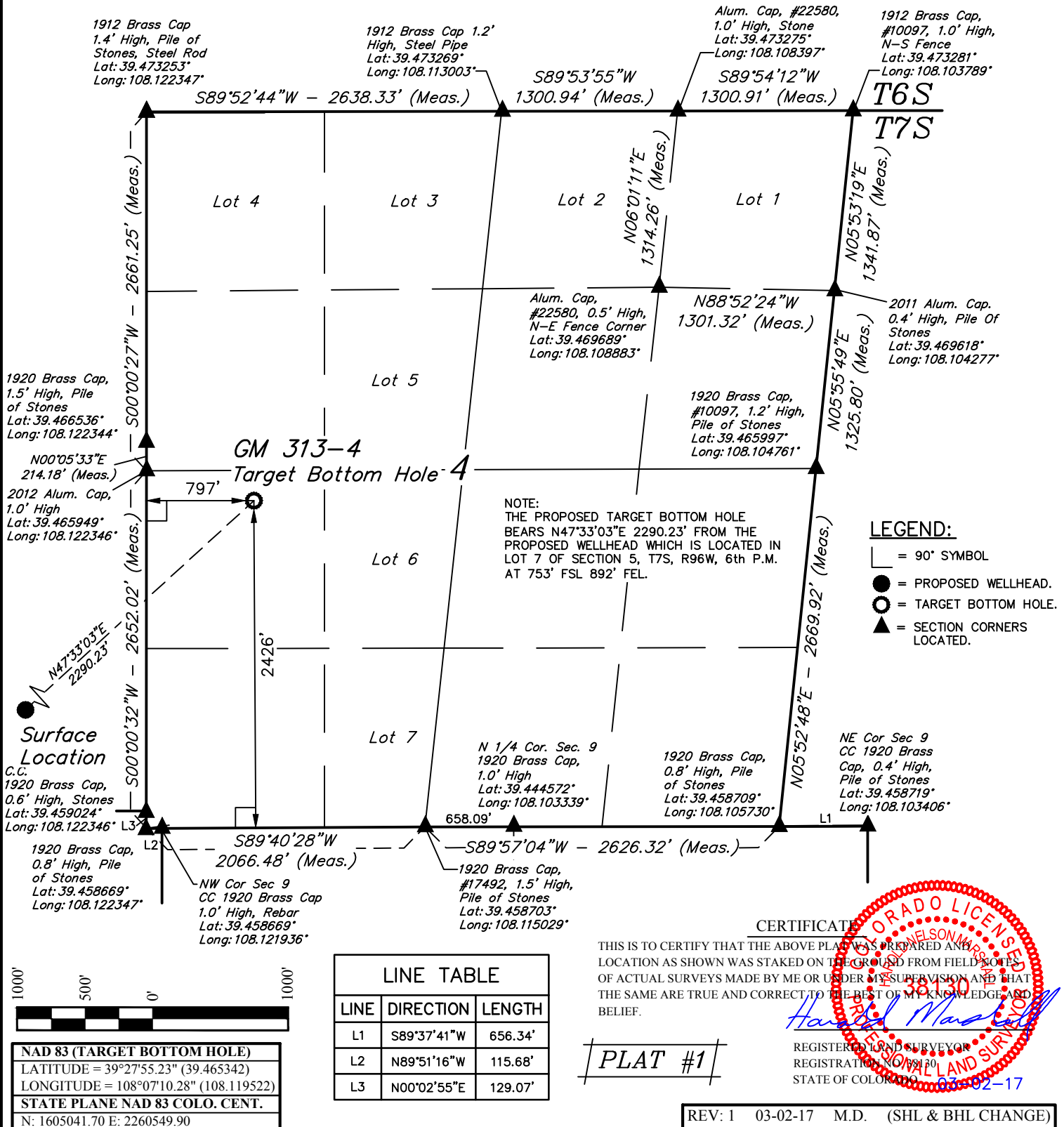
## TEP Rocky Mountain LLC

(SURFACE HOLE LOCATION) GM 313-4  
LOT 7, SECTION 5, T7S, R96W, 6th P.M.  
GARFIELD COUNTY, COLORADO

SURVEYED BY	BRIAN BAKER, J.B.	05-08-13	SCALE
DRAWN BY	M.D.	01-16-17	1" = 1000'

## WELL LOCATION PLAT

# T7S, R96W, 6th P.M.



1000' 500' 0' 1000'

**NAD 83 (TARGET BOTTOM HOLE)**  
LATITUDE = 39°27'55.23" (39.465342)  
LONGITUDE = 108°07'10.28" (108.119522)  
STATE PLANE NAD 83 COLO. CENT.  
N: 1605041.70 E: 2260549.90

LINE TABLE		
LINE	DIRECTION	LENGTH
L1	S89°37'41"W	656.34'
L2	N89°51'16"W	115.68'
L3	N00°02'55"E	129.07'

**BASIS OF BEARINGS**  
BASIS OF BEARINGS IS A G.P.S. OBSERVATION

**BASIS OF ELEVATION**

SPOT ELEVATION AT THE NORTHWEST CORNER OF SECTION 30, T5S, R95W, 6th P.M., TAKEN FROM THE FORKED GULCH, QUADRANGLE, COLORADO, GARFIELD COUNTY, 7.5 MINUTE QUAD. (TOPOGRAPHIC MAP) PUBLISHED BY THE UNITED STATES DEPARTMENT OF THE INTERIOR, GEOLOGICAL SURVEY. SAID ELEVATION IS MARKED AS BEING 5966 FEET.



**UELS, LLC**  
Corporate Office \* 85 South 200 East  
Vernal, UT 84078 \* (435) 789-1017



**TEP Rocky Mountain LLC**

**(TARGET BOTTOM HOLE) GM 313-4**  
NW 1/4 SW 1/4, SECTION 4, T7S, R96W, 6th P.M.  
GARFIELD COUNTY, COLORADO

<b>SURVEYED BY</b>	BRIAN BAKER, J.B.	05-08-13	<b>SCALE</b>
<b>DRAWN BY</b>	M.D.	01-16-17	1" = 1000'

**WELL LOCATION PLAT**