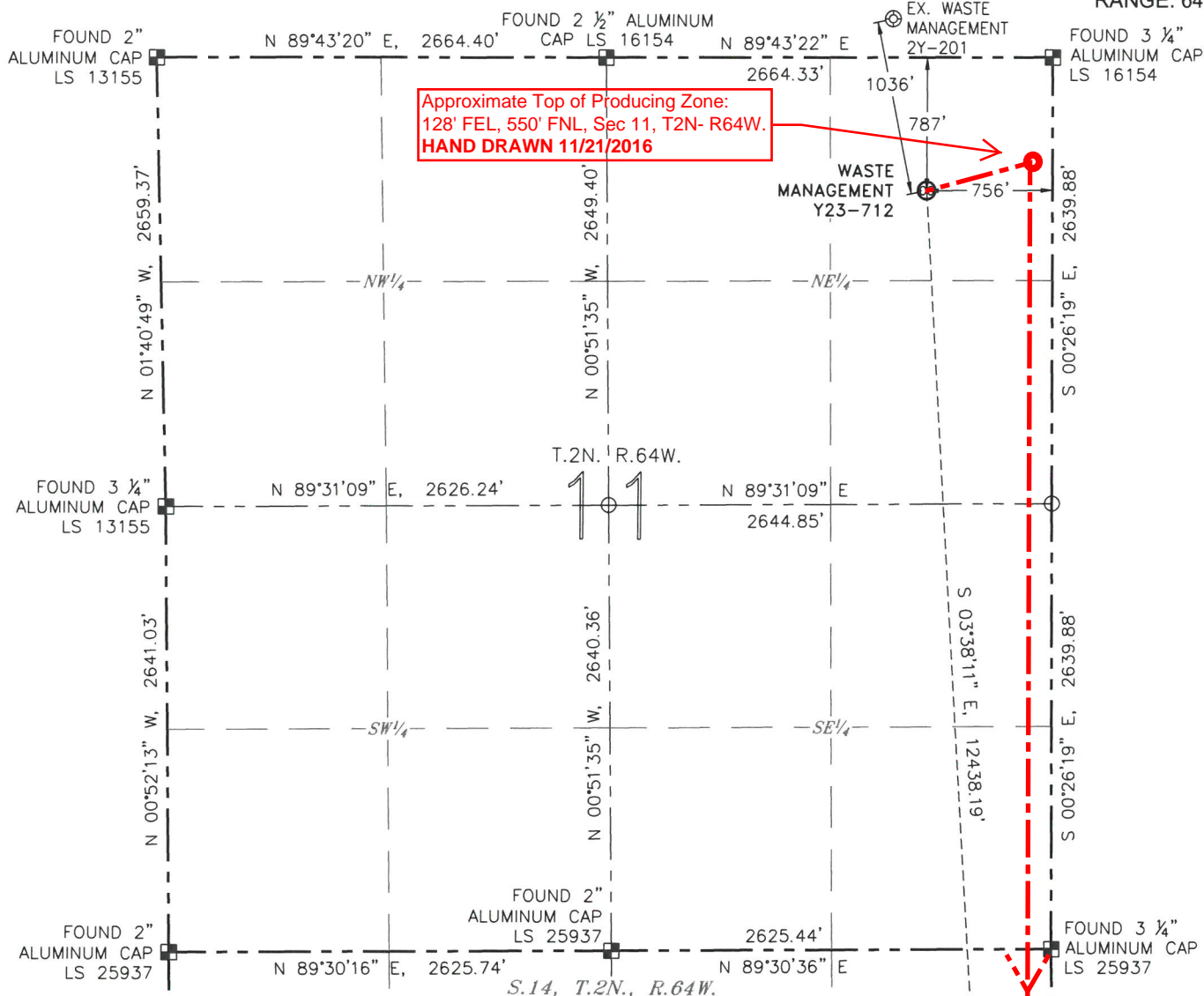


WELL LOCATION CERTIFICATE

WASTE MANAGEMENT Y23-712
(SHEET 1 OF 3)SECTION: 11
TOWNSHIP: 2N
RANGE: 64W

NOTES:

1. BEARINGS ARE GRID BEARINGS OF THE COLORADO STATE PLANE COORDINATE SYSTEM, NORTH ZONE, NAD 83. THE LINEAL DIMENSIONS SHOWN HEREON ARE BASED UPON THE "U.S. SURVEY FOOT".
2. GROUND ELEVATIONS ARE BASED UPON NGS OPUS SOLUTION NAVD 88 DATUM COMPUTED USING GEOID09.
3. IMPROVEMENTS: SEE LOCATION DRAWING FOR ALL VISIBLE IMPROVEMENTS WITHIN 500' OF THE DISTURBED AREA.
4. SURFACE USE: RANGELAND.
5. INSTRUMENT OPERATOR: ANDY MAGGIORE.
6. THE NEAREST EXISTING WELL: WASTE MANAGEMENT 2Y-201, 1036' NW.

IN ACCORDANCE WITH A REQUEST FROM TYLER BEAVERS WITH NOBLE ENERGY INC., R&R ENGINEERS-SURVEYORS, INC. HAS DETERMINED THE SURFACE HOLE LOCATION OF THE WASTE MANAGEMENT Y23-712 WELL TO BE 787' FROM THE NORTH LINE AND 756' FROM THE EAST LINE AS MEASURED AT RIGHT ANGLES FROM THE SECTION LINES OF SECTION 11, TOWNSHIP 2 NORTH, RANGE 64 WEST, AND THE BOTTOM HOLE LOCATION TO BE 2640' FROM THE SOUTH LINE AND 128' FROM THE EAST LINE AS MEASURED AT RIGHT ANGLES FROM THE SECTION LINES OF SECTION 23, TOWNSHIP 2 NORTH, RANGE 64 WEST OF THE 6TH PRINCIPAL MERIDIAN, WELD COUNTY, COLORADO.

I HEREBY CERTIFY THAT THIS WELL LOCATION CERTIFICATE WAS PREPARED BY ME, OR UNDER MY DIRECT SUPERVISION, THAT THE FIELD WORK WAS COMPLETED ON 10/27/2016, FOR AND ON BEHALF OF NOBLE ENERGY INC., THAT IT IS NOT A LAND SURVEY PLAT OR AN IMPROVEMENT SURVEY PLAT, AND THAT IT IS NOT TO BE RELIED UPON FOR ESTABLISHMENT OF FENCES, BUILDINGS, OR OTHER FUTURE IMPROVEMENT LINES.

SURFACE HOLE LOCATION

LATITUDE: N 40.15799°
LONGITUDE: W 104.51194°
PDOP: 2.6
ELEVATION: 4895'
¼-¼: NE¼NE¼

BOTTOM HOLE LOCATION

LATITUDE: N 40.12390°
LONGITUDE: W 104.50960°

LEGEND

- ⊙ PROPOSED WELL
- ⊙ EXISTING WELL
- ⊙ BOTTOM HOLE
- ⊙ FOUND MONUMENT
- CALCULATED POSITION



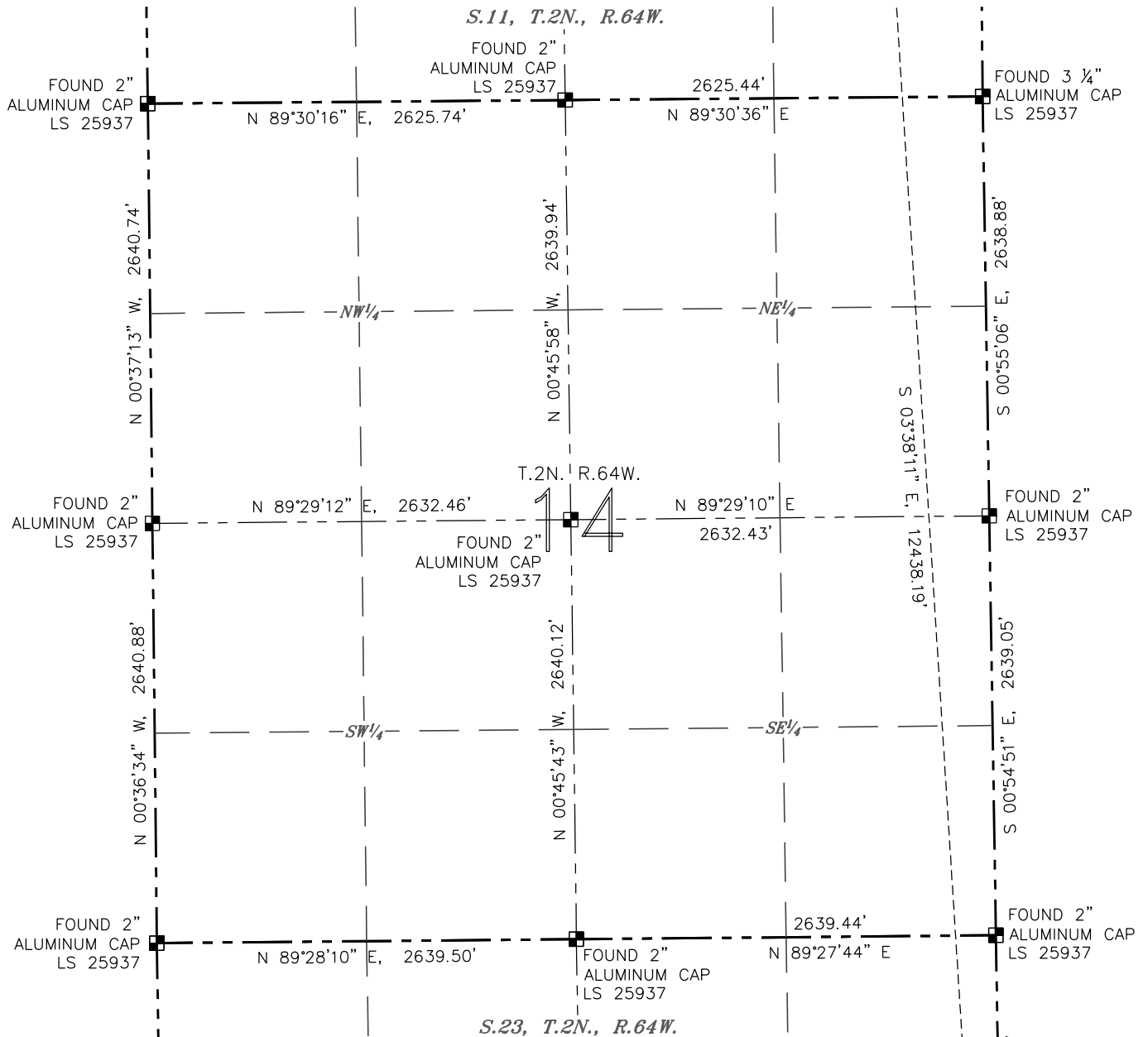
0 1000'
SCALE: 1" = 1000'



MEASURED FROM THE	BUILDING	BUILDING UNIT	HIGH OCCUPANCY BUILDING UNIT	DESIGNATED OUTSIDE ACTIVITY AREA	PUBLIC ROAD	ABOVEGROUND UTILITY	RAILROAD	PROPERTY LINE
PROPOSED WELLHEAD	5280'+	5280'+	5280'+	5280'+	715' E (CR 59)	501' N	5280'+	756' E

ANTONIO W. SMITH, PLS 38320
FOR AND ON BEHALF OF R&R
ENGINEERS-SURVEYORS, INC.

DATE: 10/29/2016
JOB #: NE16304

WELL LOCATION CERTIFICATEWASTE MANAGEMENT Y23-712
(SHEET 2 OF 3)SECTION: 11
TOWNSHIP: 2N
RANGE: 64W**LEGEND**

- ⊗ PROPOSED WELL
- ⊙ EXISTING WELL
- ⊕ BOTTOM HOLE
- FOUND MONUMENT
- CALCULATED POSITION



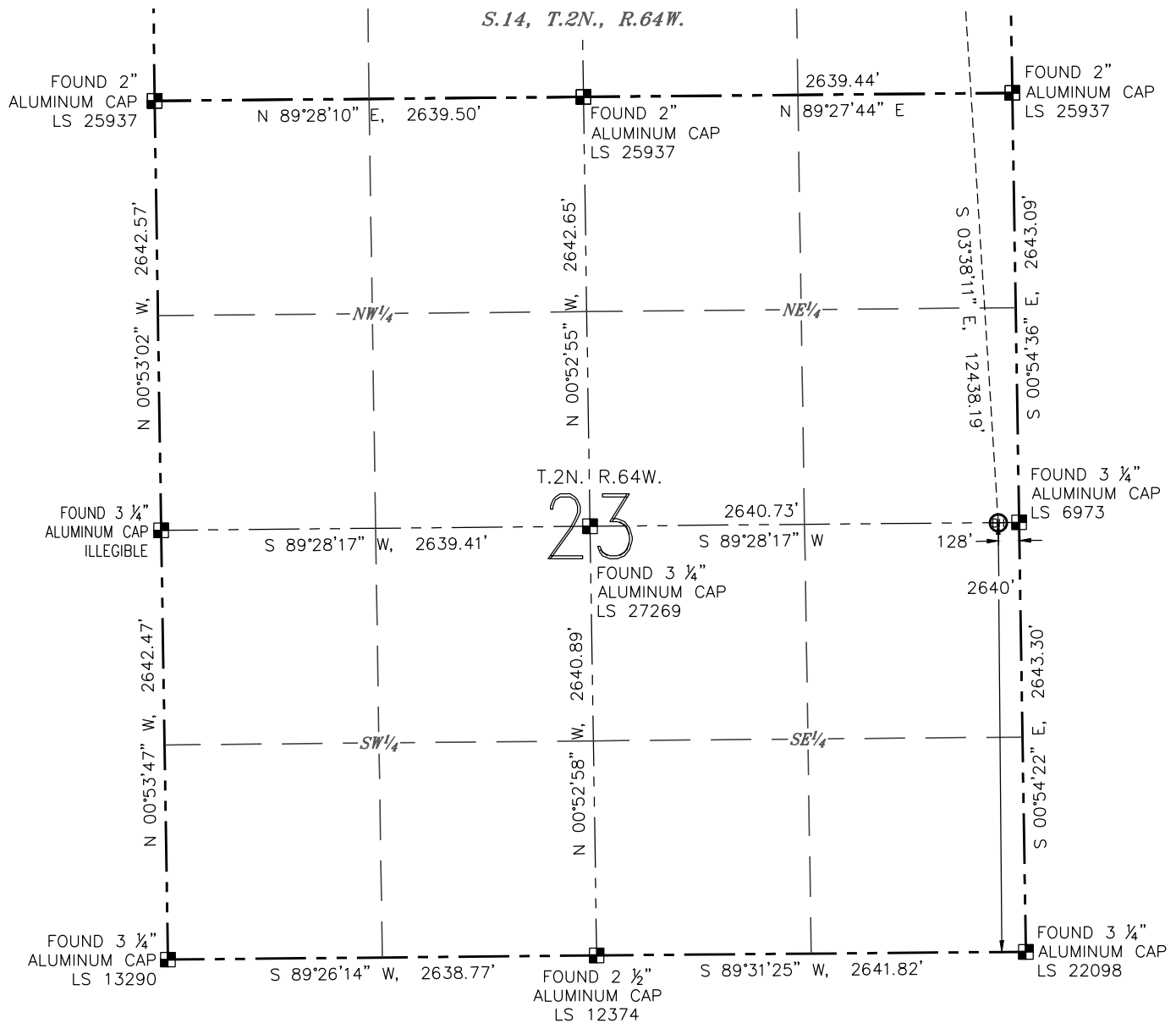
0 1000'

SCALE: 1" = 1000'

WELL LOCATION CERTIFICATE

WASTE MANAGEMENT Y23-712

(SHEET 3 OF 3)

SECTION: 11
TOWNSHIP: 2N
RANGE: 64W

LEGEND

- ⊗ PROPOSED WELL
- ⊙ EXISTING WELL
- ⊕ BOTTOM HOLE
- FOUND MONUMENT
- CALCULATED POSITION



0 1000'

SCALE: 1" = 1000'