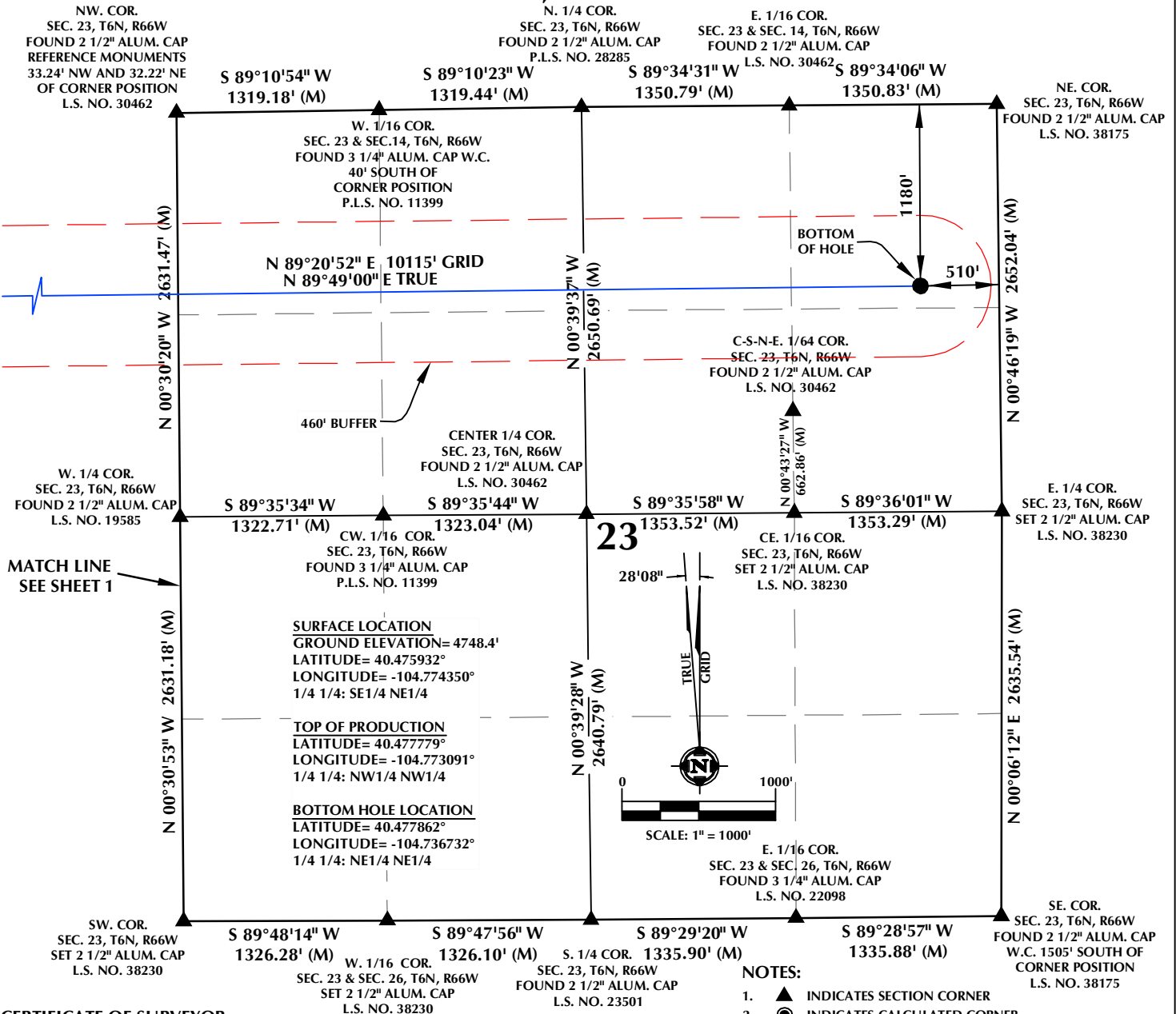


## K:\SYNERGY RESOURCES\2016\_120\_LEFFLER T6N R66W 21\PLATS\LEFFLER PLAT.dwg, 1/10/2017 4:16:36 PM, lisa



# T6N, R66W



## CERTIFICATE OF SURVEYOR:

THIS IS TO CERTIFY THAT THE ABOVE PLAT WAS PREPARED FROM FIELD NOTES OF ACTUAL SURVEY MADE BY ME OR UNDER MY SUPERVISION AND THAT THE SAME ARE TRUE AND CORRECT TO THE BEST OF MY KNOWLEDGE AND BELIEF. THIS CERTIFICATE DOES NOT REPRESENT A LAND SURVEY PLAT OR IMPROVEMENT SURVEY PLAT AS DEFINED BY C.S. 38-51-302 AND CANNOT BE RELIED UPON TO DETERMINE OWNERSHIP.

*John R. Slaugh*  
**JOHN R. SLAUGH**  
 PROFESSIONAL LAND SURVEYOR  
 COLORADO REGISTRATION NUMBER 38230

**NOTICE:**  
 ACCORDING TO COLORADO STATE LAW YOU MUST COMMENCE ANY LEGAL ACTION BASED UPON ANY DEFECT IN THIS SURVEY WITHIN THREE YEARS AFTER YOU FIRST DISCOVER SUCH DEFECT. IN NO EVENT MAY ANY ACTION BASED UPON ANY DEFECT IN THIS SURVEY BE COMMENCED MORE THAN TEN YEARS FROM THE DATE ON THE CERTIFICATION SHOWN HEREON.

## WELL DISTANCES:

**BUILDING:** ±871' NW  
**BUILDING UNIT:** ±871' NW  
**HIGH OCCUPANCY BUILDING UNIT:** ±3472' NW  
**DESIGNATED OUTSIDE ACTIVITY AREA:** 5280'+  
**PUBLIC ROAD:** ±261' E  
**PROPERTY LINE:** ±275' E  
**ABOVE GROUND UTILITY:** ±297' E  
**RAILROAD:** 5280'+

## NOTES:

- ▲ INDICATES SECTION CORNER
- INDICATES CALCULATED CORNER
- DRAWING LATITUDE AND LONGITUDE COORDINATES ARE NAD 83 (2011)(EPOCH:2010)
- ELEVATION BASED ON NAVD88 (GEOID12B)
- BASIS OF BEARING DERIVED FROM COLORADO COORDINATE SYSTEM OF 1983 NORTH ZONE.
- ALL MEASURED DISTANCES ARE GRID.  
COMBINED SCALE FACTOR: .99974122 CALCULATED FROM THE SW. CORNER OF SECTION 21, T6N, R66W
- OPERATOR: ROB WILSON / PDOP = 1.4
- SEE ADDENDUM TO WELL LOCATION CERTIFICATE FOR EXISTING IMPROVEMENTS WITHIN 500' OF THE WELL PAD.
- WELL FOOTAGES ARE MEASURED AT RIGHT ANGLES TO THE SECTION LINES.
- THE BOTTOM OF HOLE BEARS N89°20'52"E, 10115' FROM THE TOP OF PRODUCTION ZONE.

## WELL PAD - LEFFLER 8-21

**LEFFLER 41N-23C-1**  
**WELL LOCATION CERTIFICATE**  
 1901' FNL & 275' FEL SENE (SURFACE)  
 LOCATED IN SECTION 21  
 1234' FNL & 75' FWL NWNW (TOP OF PRODUCTION)  
 LOCATED IN SECTION 22  
 1180' FNL & 510' FEL NENE (BOTTOM)  
 LOCATED IN SECTION 23  
 T6N, R66W, 6TH P.M.  
 WELD COUNTY, COLORADO



1625 Broadway, Suite 300  
 Denver, Colorado 80202



## CONSULTING, LLC

**SHERIDAN OFFICE**  
 1095 Saberton Avenue  
 Sheridan, Wyoming 82801  
 Phone 307-674-0609

**LOVELAND OFFICE**  
 1635 Foxtrail Drive, Suite 204  
 Loveland, Colorado 80538  
 Phone 970-776-4331

DRAFTED BY:	LMO	CHECKED BY:	JRS	SHEET NO:
DATE DRAFTED:	1/10/17	DATE SURVEYED:	11/29/16	2
REVISED:		FILE NAME:	16-120	2 OF 2